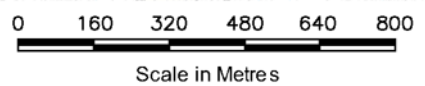


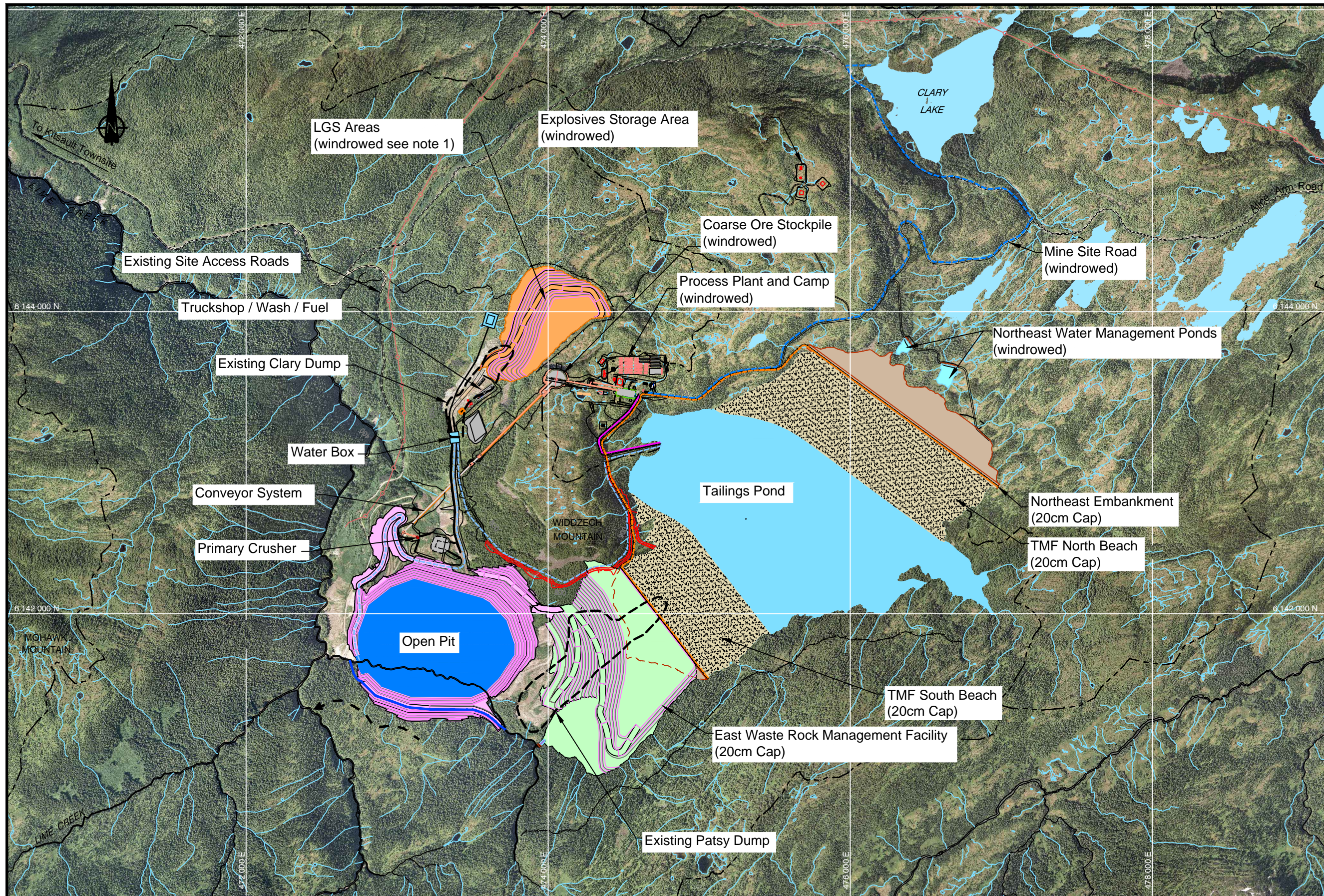
- LEGEND:**
- TAILINGS EMBANKMENT
  - EMBANKMENT CONSTRUCTION BORROW AREAS
  - STOCKPILES
  - RECLAIM BARGE
  - EXISTING ROAD
  - CONSTRUCTION ROAD
  - SERVICE ROAD
  - DIVERSION

- NOTES:**
1. COORDINATE GRID IS UTM NAD83 ZONE 10.
  2. CONTOUR INTERVAL IS 5 METRES.
  3. ALL DIMENSIONS ARE IN METRES, UNLESS NOTED OTHERWISE.
  4. PIT PHASES RECEIVED FROM WARDROP NOV. 24, 2009.

- REFERENCES:**
1. BASE MAP PROVIDED BY KNIGHT PIESOLD, FIGURE 3.1 GEOTECHNICAL AND HYDROGEOLOGICAL DRILLHOLE LOCATION PLAN, REV. 0, DATED JANUARY 13, 2011.



	Avanti Kitsault Mine Ltd. a Subsidiary of 	Reclamation and Closure		
	SRK JOB NO.: 1CA020.002 FILE NAME: SRK Potential Stockpile Locations.dwg	Kitsault Mine Project	Potential Stockpile Locations	
		DATE:	APPROVED:	FIGURE:
		August 2011	PMH	FIGURE 7



**LEGEND**

- Pipeline - Freshwater (Clary Lake)
- Pipeline - Surplus Water
- Pipeline - Bulk Tailings
- Pipeline - Reclaim
- Pipeline - Cyclon Overflow
- Pipeline - Pyrite
- Road (Design)
- - - - Road (Existing)
- Transmission Line
- - - - Watershed Boundary
- Tailings Beach
- Tailings Pond
- East Waste Rock Management Facility
- Pit Backfill Dumps
- Northeast Embankment
- Open Pit Design
- Low Grade Ore Stockpile -Emergency Waste Rock Management Facility

**NOTE**

1. Soil stripped during construction would be placed in windrows adjacent to facilities and replaced at closure.

**NOTES**

1. Coordinate system shown is UTM, NAD 83, Zone 9.

**REFERENCES**

1. Base map provided by AMEC and Knight Piesold.

**srk consulting**

SRK JOB NO.: 1CA020.002  
 FILE NAME: SRK Soil Capping Requirements.dwg

Avanti Kitsault Mine Ltd.  
 a Subsidiary of  
**AVANTI MINING INC.**

Kitsault Mine Project

Reclamation and Closure

Soil Capping Requirements

DATE: August 2011 APPROVED: PMH FIGURE: 8