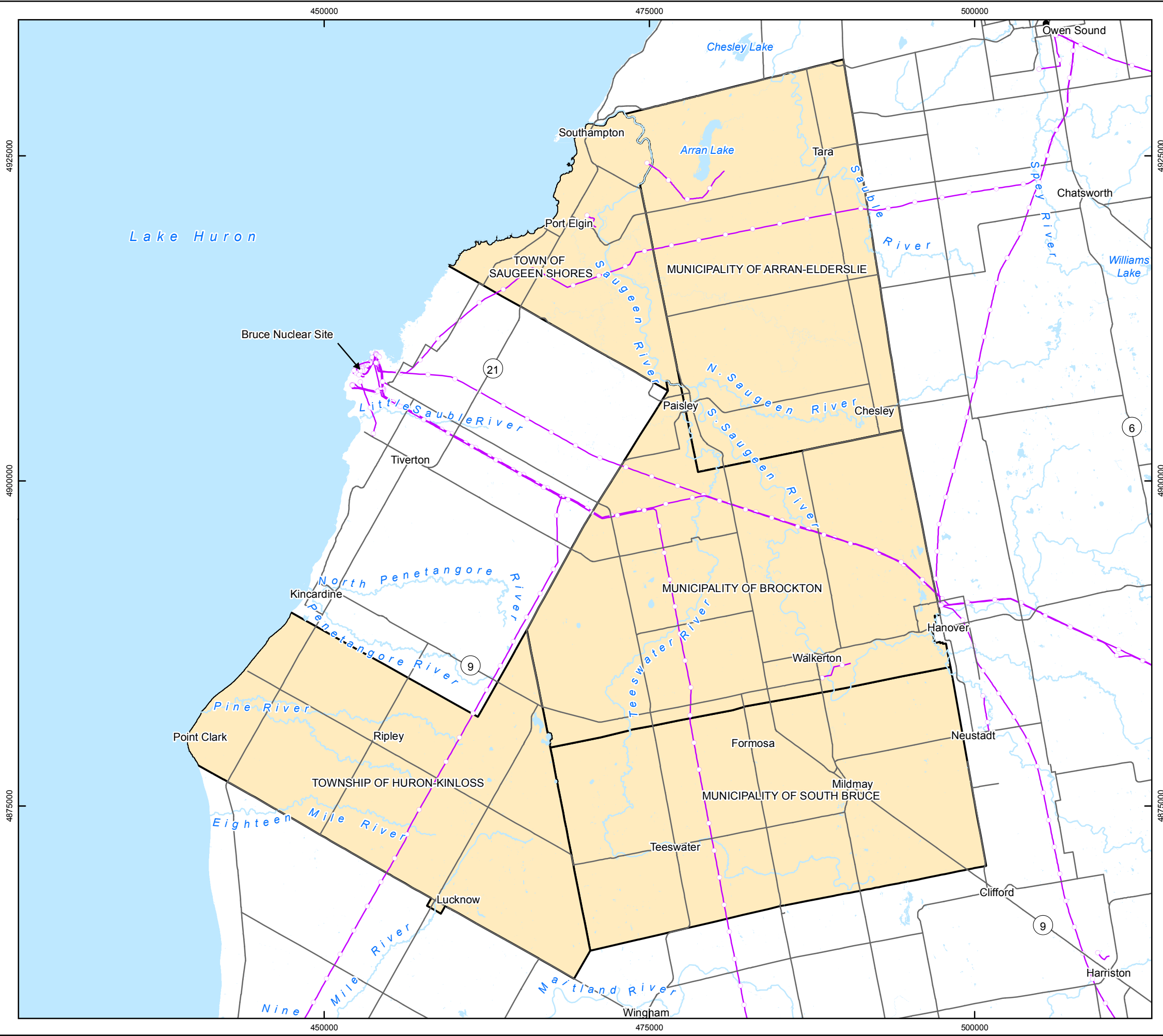


G:\Data\Project\Sedimentary\_Site\_NWMO\10-214-7\_FS\_SedimentarySites\SedimentarySites\_Suitability\_Report\_Maps\10-214-7-110\_SedSites\_Fig1\_1\_StudyAreas.mxd



**LEGEND**

- The Communities
- Highway/Major Road
- Utility Line
- Waterbody
- Watercourse

**INDEX MAP**

SCALE 1:300,000

0 2.5 5 10 15 20  
Kilometres

COORDINATE SYSTEM: UTM NAD83 Zone 17N  
SOURCE: Basemap Layers: LIO, MNR, ESRI  
Produced by Geofirma Engineering Ltd under license from Ontario Ministry of Natural Resources, ©Queens Printer 2011

PROJECT No. 10-214-7  
**NWMO Phase 1 Geoscientific Desktop Preliminary Assessment Study - Sedimentary Sites**

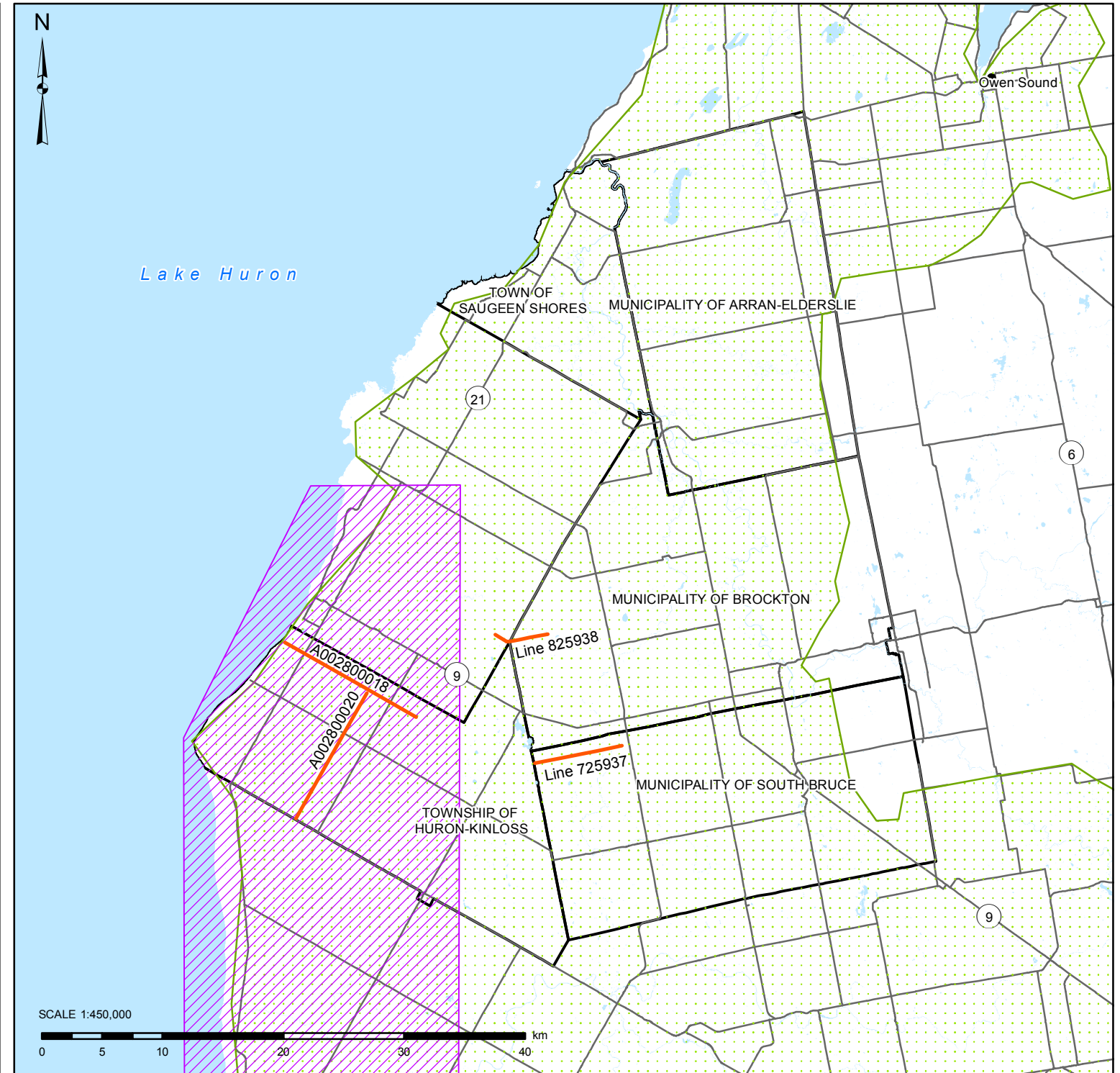
TITLE **The Area of the Five Communities**

<b>FIGURE 1.1</b>	DESIGN: NMP CAD/GIS: NMP CHECK: KGR/SNS REV: 0	
	DATE: 7/3/2014	

### Geology Mapping Coverage



### Geophysics Mapping Coverage



#### LEGEND

- The Communities
- Highway
- Water Area, Permanent

#### Detailed Geology Extent

- Sanford, (1976)

#### Full Geology Coverage

- Armstrong and Carter (2010)
- Brunton and Dodge (2008)
- Gao et al. (2006)
- Johnson et al. (1992)
- OGS (2007)
- OGS (2011)
- OGS (2010)
- OGS (1997)

#### Full Geophysics Coverage

- Boyce & Morris (2002)
- GSC (2013)
- GSC (2013)
- GSC (2013)

#### Detailed Geophysical Extent

- Acquired 2D Seismic Data
- GSC (2013) and PGW (2014)
- GSC (2013) and PGW (2014)

PROJECT No. 10-214-7

NWMO Phase 1 Geoscientific Desktop Preliminary Assessment Study - Sedimentary Sites

TITLE

**Geoscience Mapping and Geophysical Coverage of the Area of the Five Communities**

**FIGURE 1.2**

DESIGN: NMP  
CAD/GIS: NMP  
CHECK: KGR/DJH  
REV: 0

DATE: 6/26/2014



COORDINATE SYSTEM: UTM NAD83 Zone 17N  
SOURCE: Basemap Layers: LIO MNR, obtained 2010-2013  
Ontario Geological Survey, MNDM, PGW, 2013  
Produced by Geofirma Engineering Ltd under license from Ontario Ministry of Natural Resources, ©Queens Printer 2011

G:\Data\Project\Sedimentary\_Site\_NWMO\10-214-7\_FS\_SedimentarySites\SedimentarySites\_Suitability\_Report\_Maps\10-214-7-110\_SedSites\_Fig2\_1\_SatelliteImagery.mxd



**LEGEND**

- The Communities
- Highway/Major Road
- Waterbody

**INDEX MAP**

SCALE 1:300,000

0 2.5 5 10 15 20  
Kilometres

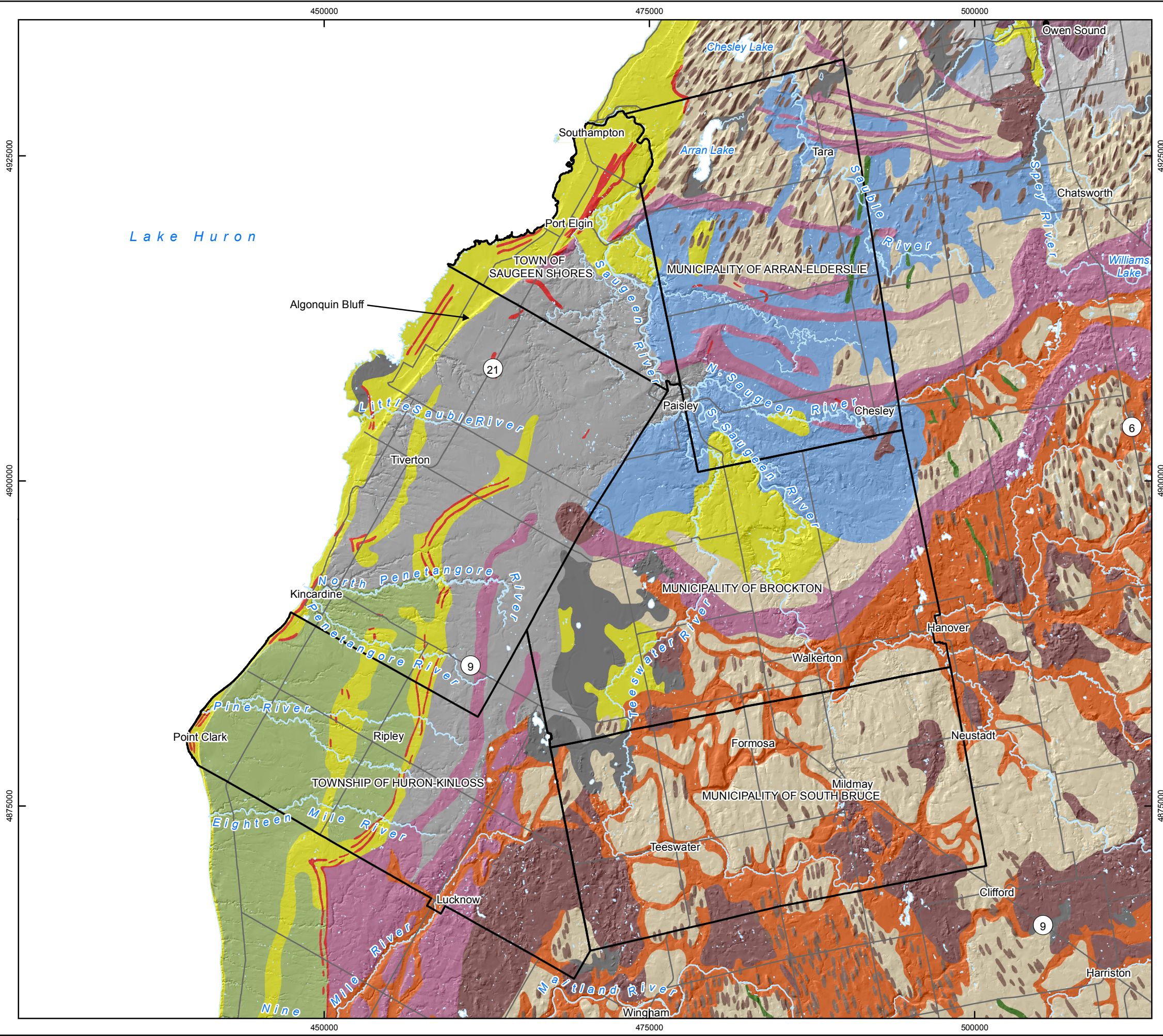
COORDINATE SYSTEM: UTM NAD83 Zone 17N  
SOURCE:  
Basemap Layers: LIO, MNR, ESRI  
Satellite Imagery: SPOT 4 and 5, Geobase, 2010  
Produced by Geofirma Engineering Ltd under license from Ontario Ministry of Natural Resources, ©Queens Printer 2011

PROJECT No. 10-214-7  
**NWMO Phase 1 Geoscientific Desktop Preliminary Assessment Study - Sedimentary Sites**

TITLE  
**Satellite Imagery of the Area of the Five Communities**

<b>FIGURE 2.1</b>	DESIGN: NMP CAD/GIS: NMP CHECK: KGR/SNS REV: 0	
	DATE: 7/4/2014	

G:\Data\Project\Sedimentary\_Site\_NWMO\10-214-7\_FS\_SedimentarySites\SedimentarySites\_Suitability\_Report\_Maps\10-214-7-110\_SedSites\_Fig2\_2\_TerrainFeatures\_PhysiographicRegions.mxd



**LEGEND**

- The Communities
- Highway/Major Road
- Waterbody
- Watercourse

**Physiography**

- Peat And Muck
- Beaches
- Eskers
- Clay Plains
- Sand Plains
- Shale Plains
- Limestone Plains
- Bevelled Till Plains
- Drumlins
- Till Plains (Drumlinized)
- Till Plains (Undrumlinized)
- Kame Moraines
- Spillways
- Till Moraines

**Physiographic Regions**

- Bighead Valley
- Cape Rich Steps
- Horseshoe Moraines
- Dundalk Till Plain
- Teeswater Drumlin Field
- Arran Drumlin Field
- Saugeen Clay Plain
- Huron Slope
- Huron Fringe
- Bruce Peninsula

0 10 20 40 Km

SCALE 1:300,000

0 2.5 5 10 15 20 Kilometres

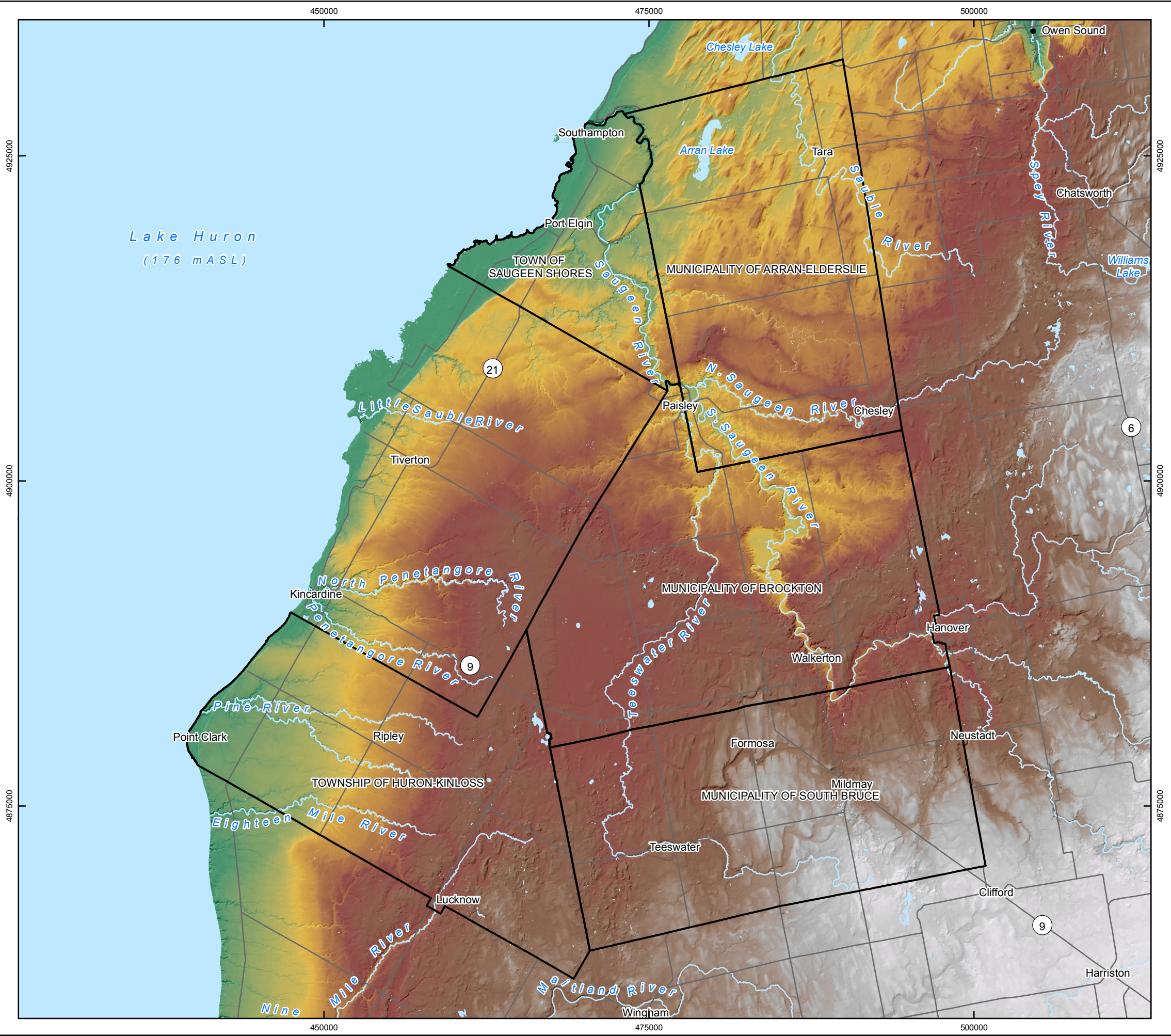
COORDINATE SYSTEM: UTM NAD83 Zone 17N  
 SOURCE: Basemap Layers: LIO, MNR, ESRI  
 Physiography: OGS MRD228  
 Settlement: OGS MRD126-REV1 Physiography of Southern Ontario 1:50,000, 2007  
 Produced by Geofirma Engineering Ltd under license from Ontario Ministry of Natural Resources, ©Queens Printer 2011

PROJECT No. 10-214-7  
 NWMO Phase 1 Geoscientific Desktop Preliminary Assessment Study - Sedimentary Sites

TITLE  
**Terrain (Physiographic) Features and Physiographic Regions of the Area of the Five Communities**

<b>FIGURE 2.2</b>	DESIGN: NMP CAD/GIS: NMP CHECK: KGR/SNS REV: 0	
	DATE: 04/06/2014	

G:\Data\Project\Sedimentary\_Site\_NWMO\10-214-7\_FS\_SedimentarySites\SedimentarySites\_Suitability\_Report\_Maps\10-214-7-110\_SedSites\_Fig2\_3\_Elevation\_MajorTopographic\_Features.mxd



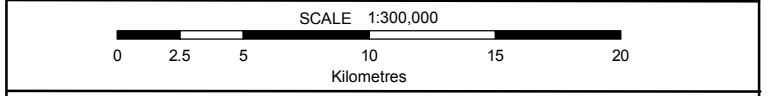
**LEGEND**

- The Communities
- Highway/Major Road
- Waterbody
- Watercourse

**Digital Elevation Model (mASL)**

High : 401

Low : 176



COORDINATE SYSTEM: UTM NAD83 Zone 17N  
 SOURCE:  
 Basemap Layers: LIO, MNR, ESRI  
 Topography: DEM, LIO, MNR, 2012  
 Produced by Geofirma Engineering Ltd under license from  
 Ontario Ministry of Natural Resources, ©Queens Printer 2011

PROJECT No. 10-214-7  
 NWMO Phase 1 Geoscientific Desktop Preliminary  
 Assessment Study - Sedimentary Sites

TITLE **Ground Surface Elevation  
 of the Area of the Five Communities**

<b>FIGURE 2.3</b>	DESIGN: NMP CAD/GIS: NMP CHECK: KGR/SNS REV: 0	
	DATE: 6/26/2014	