

Figure 3.22 - 2D Seismic Interpretation of Line A002800018 in the Township of Huron-Kinloss

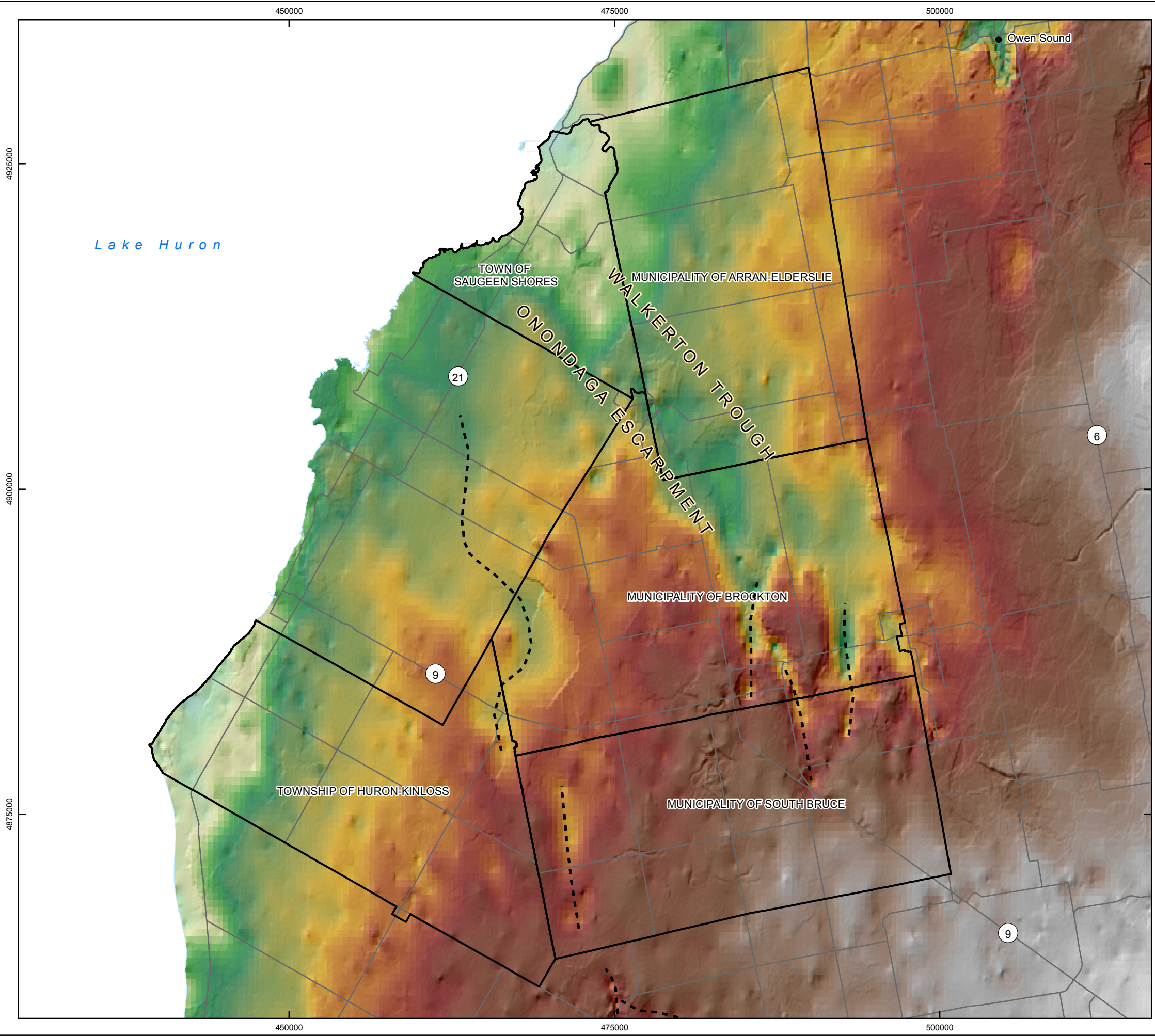
PROJECT No: 10-214-7
NWMO Phase 1 Geoscientific Desktop Preliminary Assessment Study - Sedimentary Sites

Prepared by: NMP/ADG
 Reviewed by: SNS
 Date: 29/05/2014



"P:\Projects\2010\10-214 NWMO APM Site Screening\10-214-7 Sedimentary Sites FS\110 Reporting\110.10 Suitability Report\Figures\WorkingFiles\10-214-7-110_SedSites_Fig3_22_CrossSection_SeismicLinesA002800018.cdr"

G:\Data\Project\Sedimentary_Site_NWMO\10-214-7_FS_SedimentarySites\SedimentarySites_Suitability_Report_Maps\10-214-7-110_SedSites_Fig3_23_BedrockSurfaceTopography.mxd



LEGEND

- The Communities
- Highway/Major Road
- Buried Bedrock Valley
- Waterbody

Bedrock Surface (mASL)
High : 397
Low : 95

INDEX MAP

SCALE 1:300,000
0 2.5 5 10 15 20
Kilometres

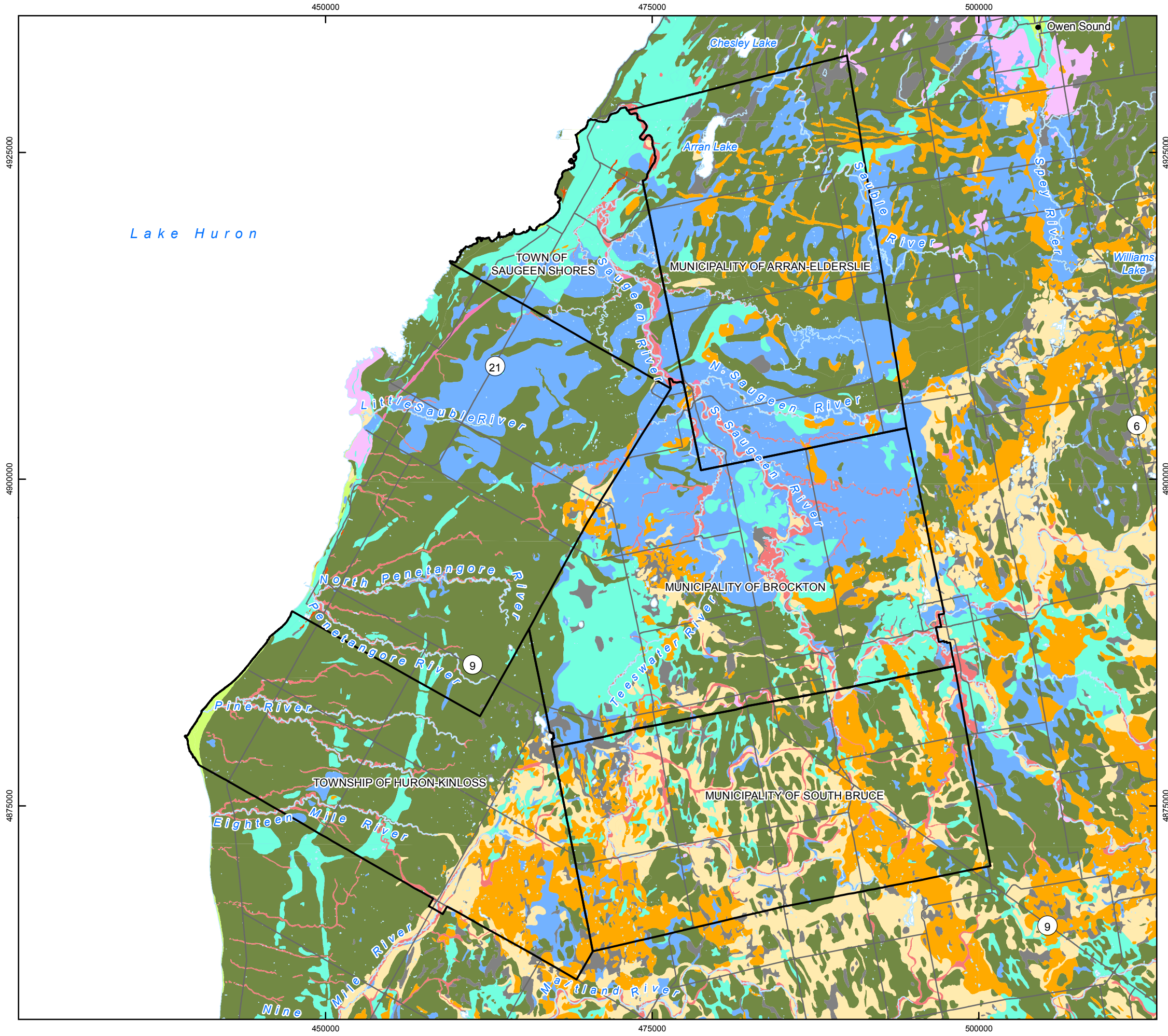
COORDINATE SYSTEM: UTM NAD83 Zone 17N
SOURCE:
Basemap Layers: LIO, MNR, ESRI
Buried Bedrock Valley: Gao, 2011a
Geology: MRD207 Bedrock Topography and Overburden Thickness Mapping, Southern Ontario, OGS, 2006
Produced by Geofirma Engineering Ltd under license from Ontario Ministry of Natural Resources, ©Queens Printer 2011

PROJECT No. 10-214-7
NWMO Phase 1 Geoscientific Desktop Preliminary Assessment Study - Sedimentary Sites

TITLE
Bedrock Surface Topography in the Area of the Five Communities

FIGURE 3.23	DESIGN: NMP CAD/GIS: NMP CHECK: KGR/SNS REV: 0	
	DATE: 7/2/2014	

G:\Data\Project\Sedimentary_Site_NWMO\10-214-7_FS_SedimentarySites\SedimentarySites_Suitability_Report_Maps\10-214-7-110_SedSites_Fig3_24_SurficialGeology_Community.mxd



LEGEND

- The Communities
- Highway/Major Road
- Waterbody
- Watercourse

Surficial Geology

- Wetland
- Colluvial
- Lacustrine
- Fluvial
- Aeolian
- Glaciolacustrine (coarse)
- Glaciolacustrine (fine)
- Glaciofluvial (ice-contact)
- Glaciofluvial (outwash)
- Glacial (morainal)
- Bedrock-drift Complex

INDEX MAP

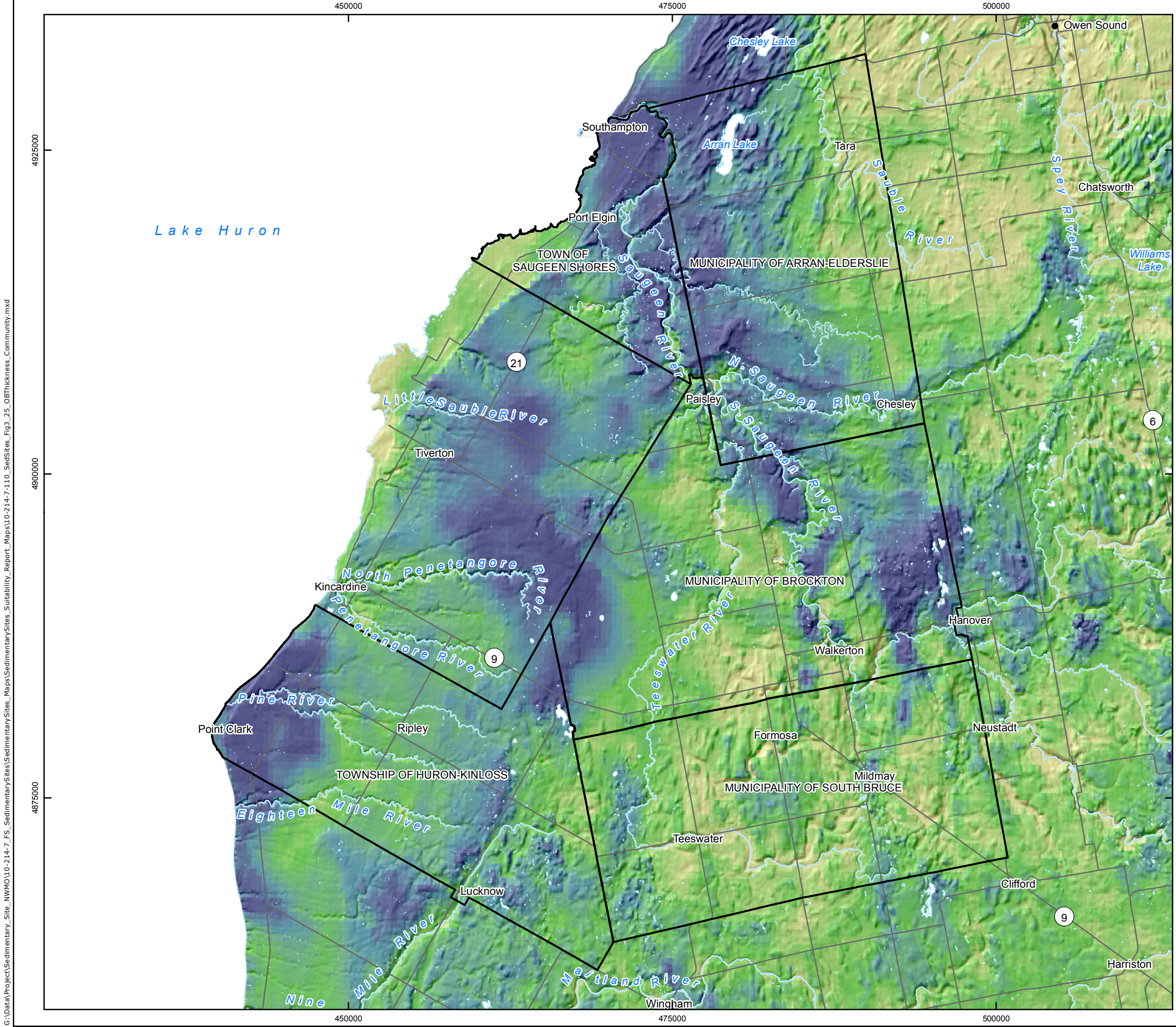
SCALE 1:300,000

COORDINATE SYSTEM: UTM NAD83 Zone 17N
 SOURCE: Basemap Layers: LIO, MNR, ESRI
 Geology: OGS MRD128-REV Surficial Geology of Southern Ontario, 1:50,000, 2010
 Produced by Geofirma Engineering Ltd under license from Ontario Ministry of Natural Resources, ©Queens Printer 2011

PROJECT No. 10-214-7
NWMO Phase 1 Geoscientific Desktop Preliminary Assessment Study - Sedimentary Sites

TITLE
Surficial Geology of the Area of the Five Communities

FIGURE 3.24	DESIGN: NMP CAD/GIS: NMP CHECK: KGR/SNS REV: 0	
	DATE: 30/05/2014	



LEGEND

- The Communities
- Highway/Major Road
- Waterbody
- Watercourse

Overburden Thickness (m)
High : 104
Low : 0

INDEX MAP

SCALE 1:300,000
0 2.5 5 10 15 20
Kilometres

COORDINATE SYSTEM: UTM NAD83 Zone 17N
SOURCE:
Basemap Layers: LIO, MNR, ESRI
Geology: OGS MRD207 Bedrock topography and overburden thickness mapping, southern Ontario, 2006
Produced by Geofirma Engineering Ltd under license from Ontario Ministry of Natural Resources, ©Queens Printer 2011

PROJECT No. 10-214-7
NWMO Phase 1 Geoscientific Desktop Preliminary Assessment Study - Sedimentary Sites

TITLE
Overburden Thickness in the Area of the Five Communities

FIGURE 3.25	DESIGN: NMP CAD/GIS: NMP CHECK: KGR/SNS REV: 0	
	DATE: 04/06/2014	

G:\Data\Project\Sedimentary_Site_NWMO\10-214-7_FS_SedimentarySites\SedimentarySites_Suitability_Report_Maps\10-214-7-110_SedSites_Fig3_25_Overburden_Thickness_Community.mxd