



ECOFOR

natural and cultural resource consultants

**SITE C CLEAN ENERGY PROJECT
SYSTEMATIC DATA RECOVERY
Annual Summary Report (2021)
APPENDIX A
PHOTODOCUMENTATION & MAPPING (2021)
HERITAGE INVESTIGATION PERMIT
2016-0235**

Appendix A. Photodocumentation & Mapping

HbRg-5 Photodocumentation
HbRg-5 Mapping

A1
A3



Permit: 2016-0235

Development Area: BC Hydro Site C – HbRg-5

Client: BC Hydro

Date: September 29 & October 1, 2021



Photo 20, View N of Excavation, HbRg-5



Photo 23, View W of Excavation, HbRg-5



Permit: 2016-0235

Development Area: BC Hydro Site C – HbRg-5

Client: BC Hydro

Date: September 29 & October 1, 2021

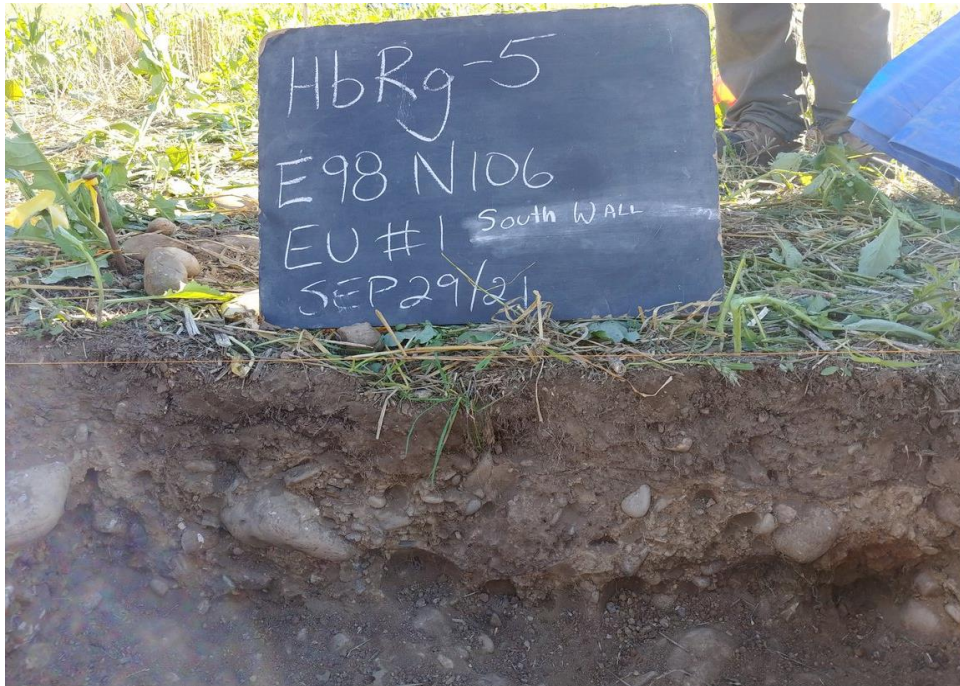
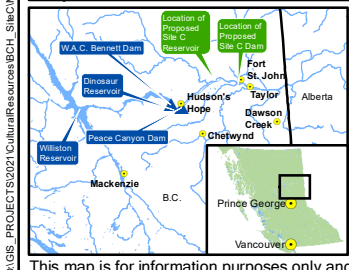
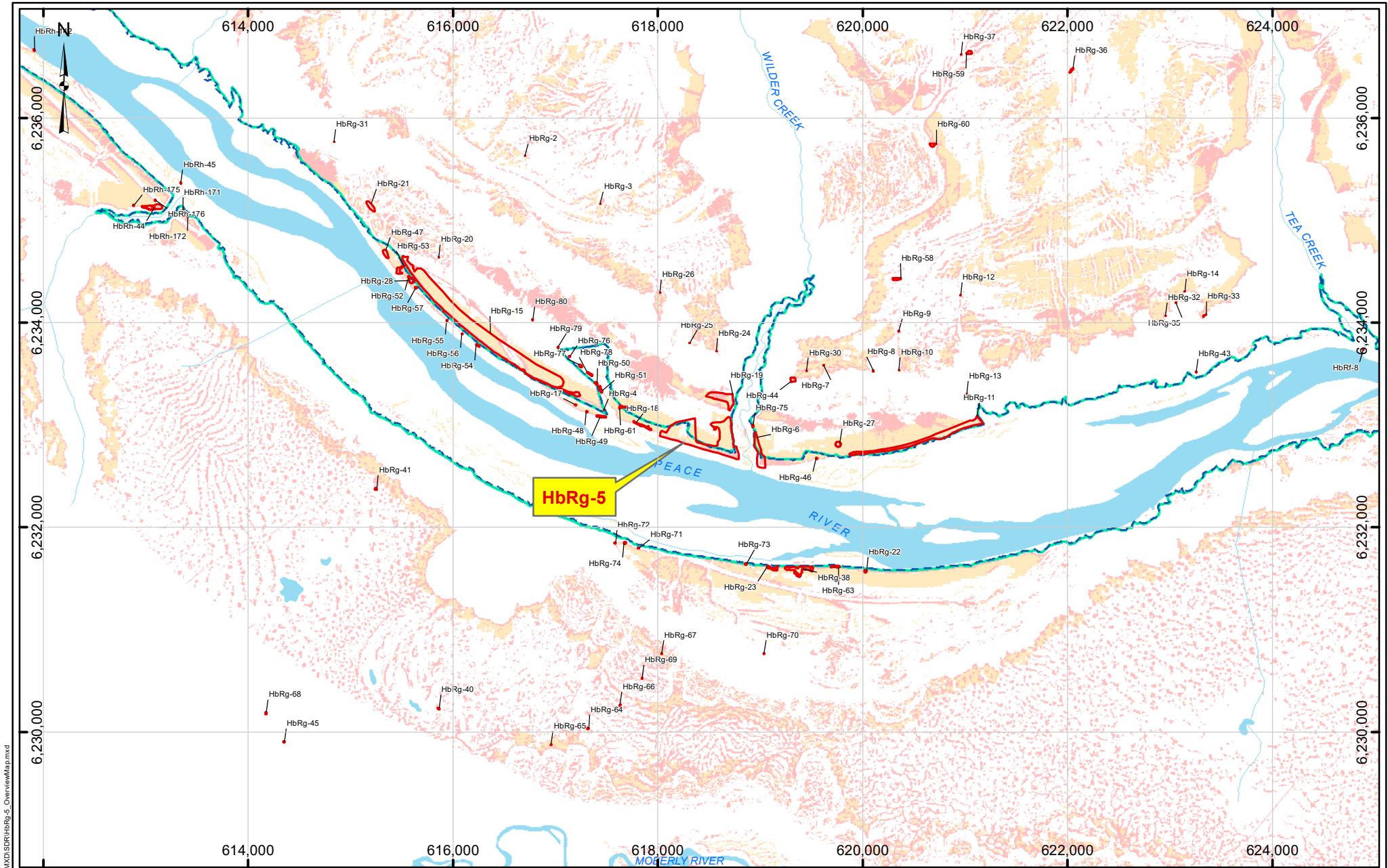


Photo 6, South Wall Stratigraphic Profile, EU1 E98 N106, HbRg-5



Map Notes:

1. Datum: NAD83
2. Projection: UTM Zone 10N
3. Base Data: Province of B.C.
4. Archaeological data provided by BC Hydro (2021, Sept 14)
5. Proposed reservoir area generated from LIDAR data obtained from BC Hydro (October, 2016)
6. 5-Year Beach Line obtained from BC Hydro (September, 2017)
7. Proposed reservoir area generated from LIDAR data obtained from BC Hydro (October, 2016)
8. Transportation realignment data provided by BC Hydro (July 20, 2019)

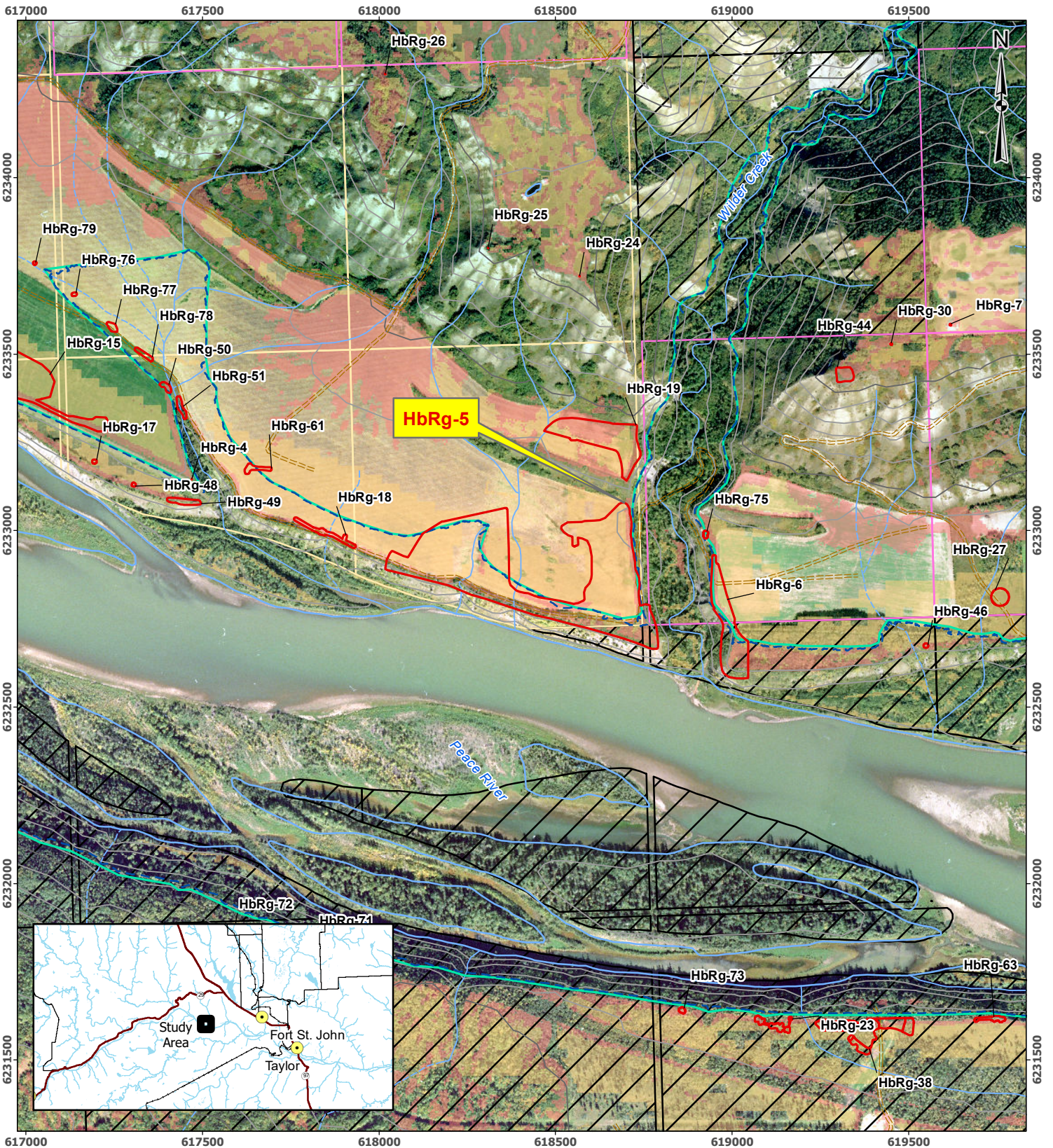
Legend

- City/District Municipality
- Road
- Highway
- Highway Realignment
- Railway
- Archaeology Site
- Proposed Reservoir (FSL 461.8m)
- 5yr Beach Line
- Right of Way
- Archaeological Potential Model
 - Moderate
 - High

1:50,000 0 2 km

**Figure 1 - Overview Map
HbRg-5 Site C Systematic Data Recovery**

DATE	2021-10-27	3
------	------------	---



- Map Notes:
1. Datum: NAD83
 2. Projection: UTM Zone 10N
 3. Base Data: Province of B.C.
 4. Archaeological data provided by BC Hydro (2021, Sept 14)
 5. Orthophotos and Proposed Reservoir derived from LIDAR obtained from BC Hydro (October 2016)
 6. Archaeological Potential obtained from BC Hydro (October, 2016)
 7. 5-Year Beach Line obtained from BC Hydro (September, 2017)
 8. Transportation realignment data provided by BC Hydro (July 20, 2019)

LEGEND

- Contour - Index
- Contour - Intermediate
- Stream - Definite
- Stream - Indefinite
- Lake
- Previously Recorded Archaeological Site Boundary
- Proposed Reservoir (FSL 461.8)
- 5yr Beach Line
- BC Hydro Owned Land - Leased
- Crown Land
- Private Land
- Archaeological Potential Model**
 - Moderate
 - High

1:15,000
0 500 Meters

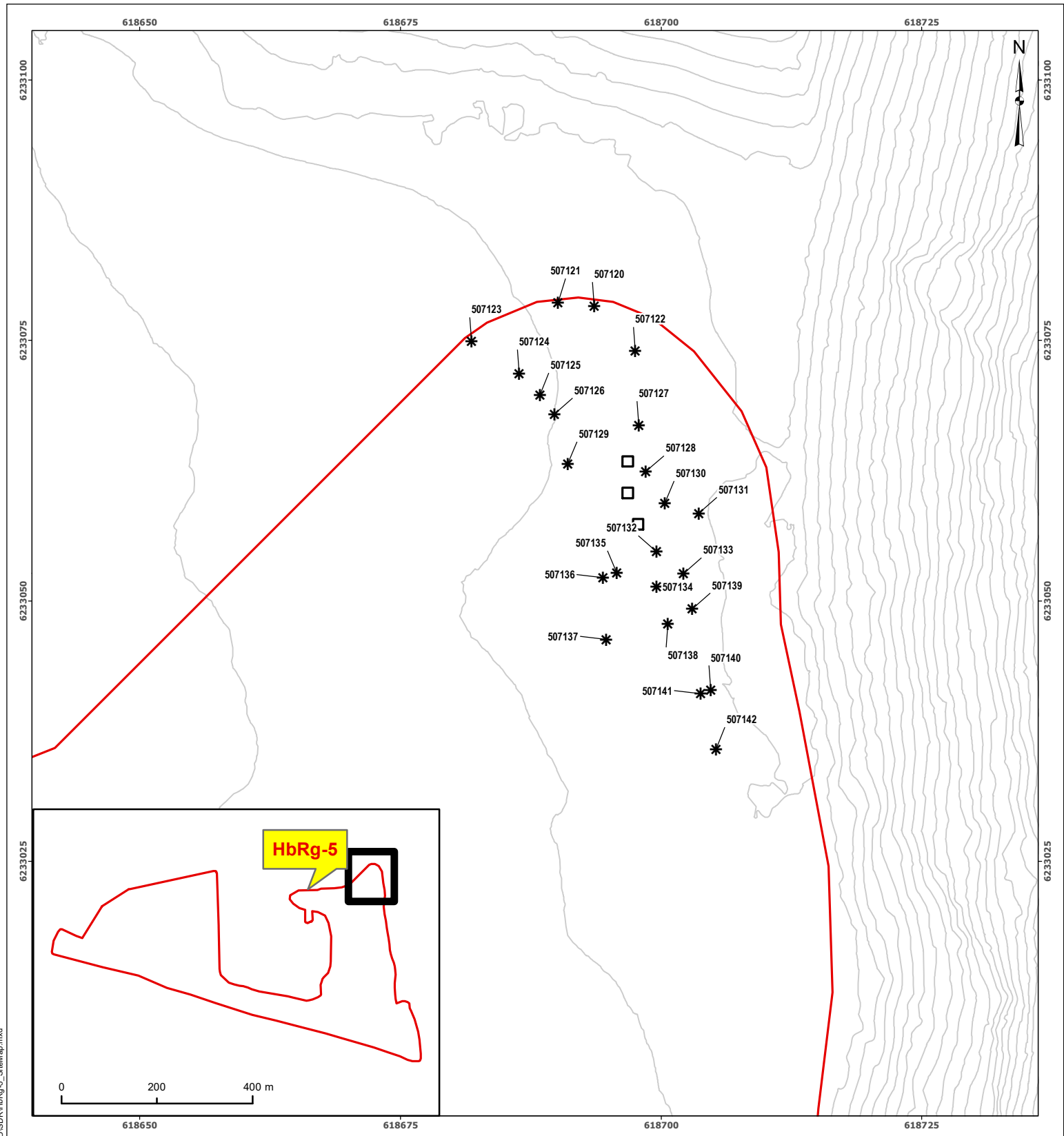
BCGS MAPSHEET: 94A.025
NTS MAPSHEET: 94A/03
EPN: 21-1186-211

Figure 2 - Midrange Location Map HbRg-5

DATE	2021-10-27	R 0
------	------------	-----

This map is for information purposes only and accuracy is not guaranteed.

Path: O:\GIS_PROJECTS\2021\CulturalResources\BCH_Site\CIMXD\SDR\HbRg-5_MidrangeMap.mxd



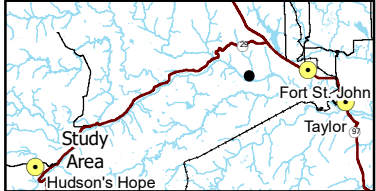
618650 618675 618700 618725

6233100 6233075 6233050 6233025

Map Notes:

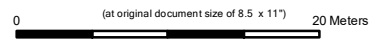
1. Datum: NAD83
2. Projection: UTM Zone 10N
3. Base Data: Province of B.C.
4. Archaeological data provided by BC Hydro (2021, Sept 14)
5. Topography from DEM generated LIDAR data obtained from BC Hydro (October 2016)

BCGS MAPSHEET: 94A.025
 NTS MAPSHEET: 94A/03
 EPN: 21-1186-211



- Legend**
- * Surface Find
 - Contour (1m)
 - Evaluative Unit (EU)
 - ▭ Previously Recorded
 - ▭ Archaeological Site Boundary
 - Waterbody

1:500

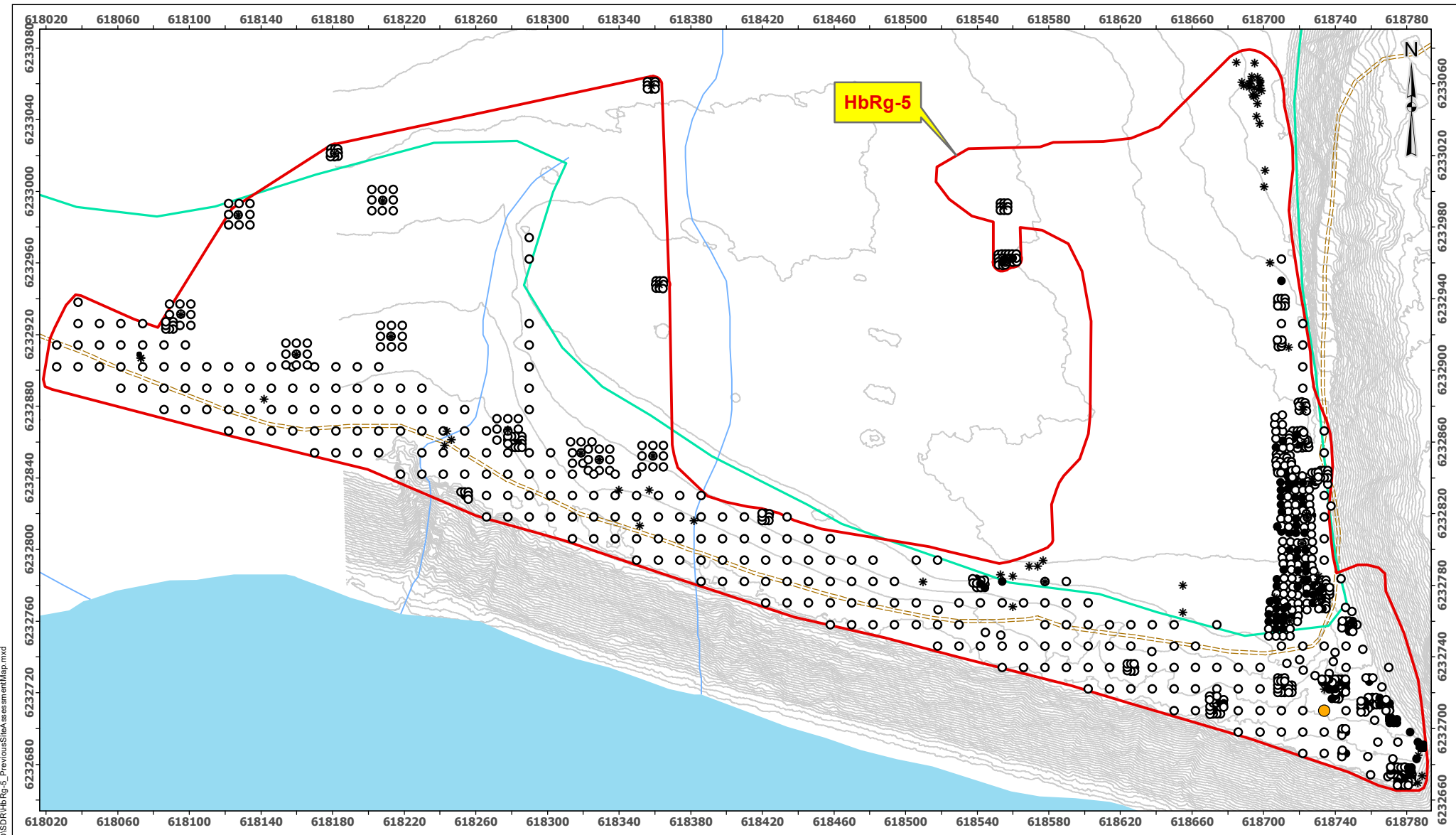


**Figure 3 - Plan of Excavation at HbRg-5
 Conducted Under Permit 2016-0235**

DATE	2021-10-27	
------	------------	--

This map is for information purposes only and accuracy is not guaranteed.

Path: O:\GIS_PROJECTS\2021\CulturalResources\BCH_Site\CMXD\SDR\HbRg-5_SiteMap.mxd



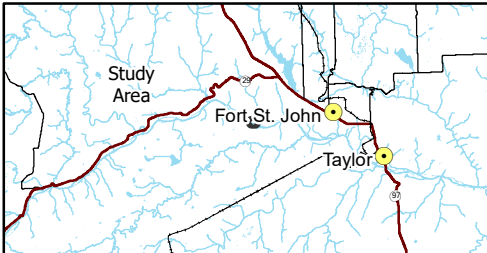
HbRg-5

Legend


- Auger Test
- Previous Negative Shovel Test Location
- Previous Positive Shovel Test Location
- * Previous Surface Find
- Previous Evaluative Unit
- Previous EU Location
- Trail
- Contour (1m)
- Archaeological Site
- 5yr Beach Line

1:3,000
0 200 Meters

BCGS MAPSHEET: 94A.025
NTS MAPSHEET: 94A/03
EPN: 21-1186-211



Map Notes:
1. Datum: NAD83
2. Projection: UTM Zone 10N
3. Base Data: Province of B.C.
4. Archaeological data provided by BC Hydro (2021, Aug 14)
5. Topography from DEM generated LiDAR data obtained from BC Hydro (July 2018)
6. Previous site assessment data obtained by Golder Associates; provided by BC Hydro (2020, May 15)



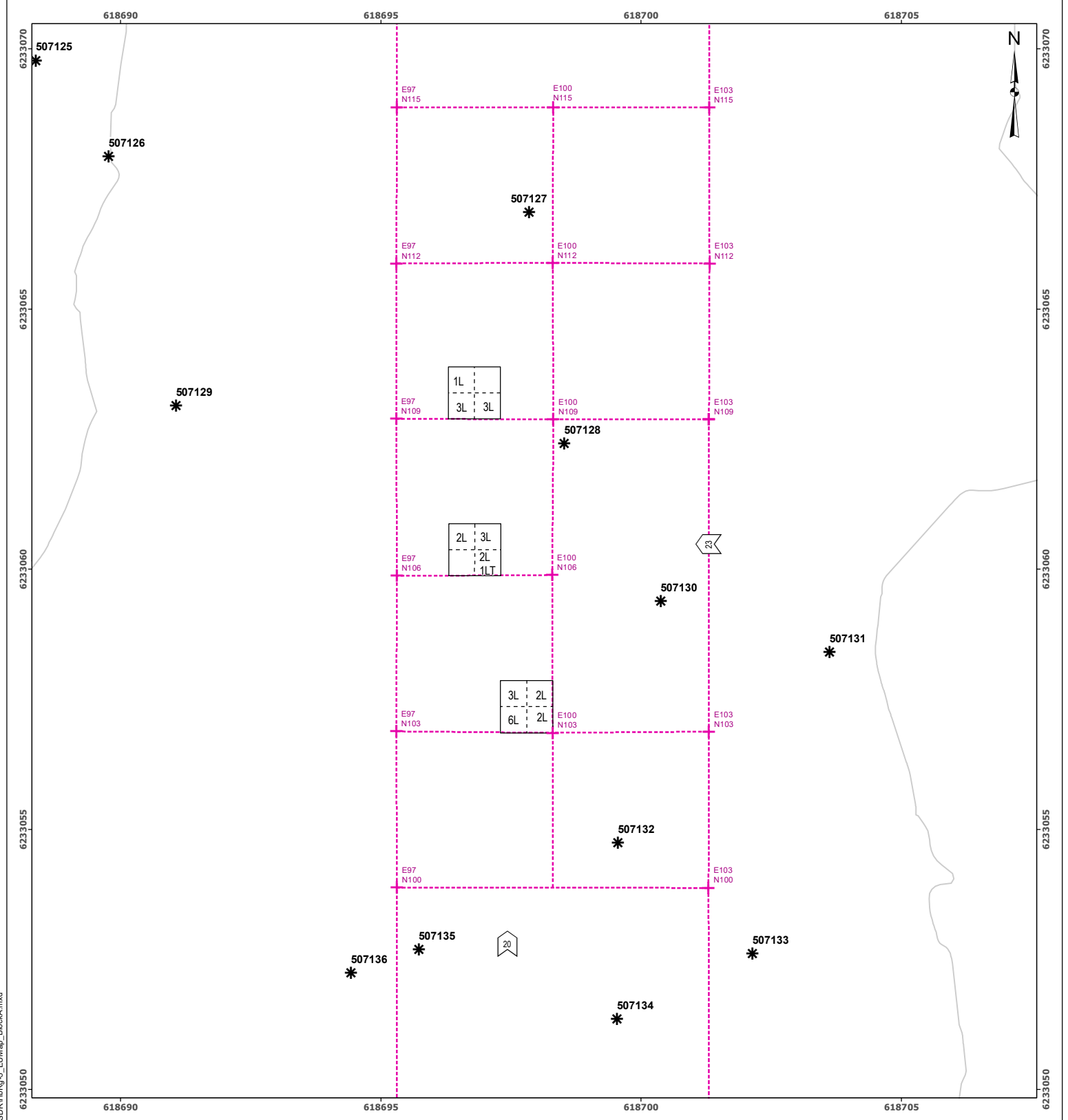
ECOFOR
natural and cultural resource consultants

Figure 4 - Previous Assessment Map
Locations of 2016, 2018, & 2021 Tests at HbRg-5
Conducted Under Permit 2014-0274, 2016-0235 & 2019-0218

DATE	2022-03-22	
------	------------	--

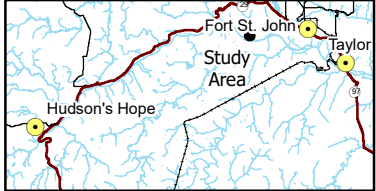
This map is for information purposes only and accuracy is not guaranteed.

Path: O:\GIS_PROJECTS\2021\CulturalResources\BCH_Site\CMXD\SDR\HbRg-5_PreviewSiteAssessmentMap.mxd



Map Notes:
 1. Datum: NAD83
 2. Projection: UTM Zone 10N
 3. Base Data: Province of B.C.
 4. Archaeological data provided by BC Hydro (2021, Sept 14)
 5. Topography from DEM generated LiDAR data obtained from BC Hydro (October 2016)

BCGS MAPSHEET: 94A.025
 NTS MAPSHEET: 94A/03
 EPN: 21-1186-211



- Legend**
- * Surface Find
 - P1 Photo Number/Direction
 - + Survey Grid Markers
 - - - Survey Grid Lines
 - - - EU Quadrant Boundary
 - - - Contour (1m)
 - Evaluative Unit (EU)
 - L = Lithic LT = Lithic Tool

1:100
 0 (at original document size of 8.5 x 11") 4 Meters

**Figure 5 - Site Assessment Map of Block A
 Plan of Excavation at HbRg-5
 Conducted Under Permit 2016-0235**

DATE	2021-11-17	
------	------------	--

This map is for information purposes only and accuracy is not guaranteed.

Path: O:\GIS_PROJECTS\2021\CulturalResources\BCH_Site\CMXD\SDR\HbRg-5_EUMap_BlockA.mxd