

Date:	July 12, 2022	Owner/Client:	New Gold Inc.
Day:	Tuesday	Okane Project #:	1003-223
Prepared by:	Brady Hay	Project Location:	Ontario

Number of Pages in Report 4

Environmental Conditions:

<u>Morning Conditions</u>	Weather	Fair	Precipitation	0 mm
Temperature (High/Low)	22	13	Humidity	80 to 100%
			Wind	Low
<u>Afternoon Conditions</u>	Weather	Rain	Precipitation	0 - 5 mm
Temperature (High/Low)	23	22	Humidity	80 to 100%
			Wind	Moderate

General Comments

General:

- Spoke with Mitchell Hearn to discuss material from the southern borrow area while it was being stockpiled for P31 NCL use. The material appeared to have a lower amount of stone content and CQA informed New Gold of the material conditions. A stockpile sample was taken from the material in the event the material is utilized in P32 CCL.
- Hydraulic conductivity testing locations marked by CQA in preparation for installation once P30 is dry enough for equipment to safely excavate down to CCL.

P31, L3:

- L3 track packed by dozer to aid in the drying process of the lift.
- The excavator was utilized to drain standing water off of L3 to the north and south.

P31, L4:

- L4 track packed by dozer to aid in the drying process of the lift.

CQA Representative:

<original signed by>

Issue #	Description	Location	Resolution	Monitor	Status
1	South side of P30, L2 reaching concerning levels of surface desiccation prior to coverage	South half of P30, L2 toe	South half P30, L2 covered with as much dark brown, moist, and pliable NCL material as possible prior to end of day by dozer	No	Open
2	Desiccated material on P30, L2 & L3 following pause of cover construction	Exposed areas of P30, L2 & L3	L2 trimmed and material was mixed/ track packed before re-compaction, retesting, and survey. L3 material mixed prior to placement.	No	Open
3	Elevation of topsoil berm greater then L4 in areas (Berm height increases progressing south)	0+793 - 0+562	Panels in the area to be monitored to evaluate if adequate runoff is achieved or if pooling occurs at the toe	Yes	Open
				Choose:	Choose:
				Choose:	Choose:

PHOTOGRAPHS



Photo #: 1

P31, L4 morning conditions



Photo #: 2

P31, L3 morning conditions



Photo #: 3

Excavator loading haul truck with remaining material from southern borrow area



Photo #:

Stockpile S558

PHOTOGRAPHS



Photo #: 5

S558 material



Photo #: 6

Excavator draining standing water from P31, L3 toe



Photo #: 7

P31, L4 end of day conditions



Photo #: 8

P31, L3 end of day conditions

Date:	July 13, 2022	Owner/Client:	New Gold Inc.
Day:	Wednesday	Okane Project #:	1003-223
Prepared by:	Brady Hay	Project Location:	Ontario

Number of Pages in Report 4

Environmental Conditions:

<u>Morning Conditions</u>	Weather	Fair	Precipitation	0 mm
Temperature (High/Low)	20	14	Humidity	80 to 100%
			Wind	Low
<u>Afternoon Conditions</u>	Weather	Fair	Precipitation	0 mm
Temperature (High/Low)	24	20	Humidity	40 to 60%
			Wind	Low

General Comments

General:

- P32 initiated while P31 NCL material was given further time to dry.
- Excavator utilized at the borrow area to load trucks and at P32 to key trench and remove over size stone from P32, L1.

P31, L3:

- L3 material given time to dry sufficiently in the morning before coverage with L4. With areas of standing water still present at the toe CQA requested the area be track packed/mixed prior to coverage if L4 reached the toe prior to the end of day.

P31, L4:

- L4 placement resumed in the afternoon following the placement of P32, L1 after being given time to dry further.

P32 Key Trench:

- Key trench dug to bedrock at varying depths with the exception of an approximately 6m stretch where suitable tie in material was reached.
- Dozers utilized to push back the topsoil berm past the key trench following placement of L1 to aid in adequate runoff once P32 is completed.

P32, L1:

- L1 initiated with material from the same borrow area as P31 and material from the southern borrow area.
- Material appeared brownish grey, moist, and pliable with a moderate amount of over size stone.
- Dozers utilized to create sufficient overlap with P31 for adequate tie in.
- Extra loads of material needed to bring the bench up to the proper depth. Compaction of the slope was completed while the bench placement was in progress. Compaction of the bench was then completed at the end of day.
- Several pieces of over size stone marked by CQA and removed by the excavator prior to compaction being completed with four passes of the roller. Some marked pieces still remained at the end of day and are to be removed during the testing process.

CQA Representative:

<original signed by>

Issue #	Description	Location	Resolution	Monitor	Status
1	South side of P30, L2 reaching concerning levels of surface desiccation prior to coverage	South half of P30, L2 toe	South half P30, L2 covered with as much dark brown, moist, and pliable NCL material as possible prior to end of day by dozer	No	Open
2	Desiccated material on P30, L2 & L3 following pause of cover construction	Exposed areas of P30, L2 & L3	L2 trimmed and material was mixed/track packed before re-compaction, retesting, and survey. L3 material mixed prior to	No	Open
3	Elevation of topsoil berm greater then L4 in areas (Berm height increases progressing south)	0+793 - 0+562	Panels in the area to be monitored to evaluate if adequate runoff is achieved or if pooling occurs at the toe	Yes	Open
				Choose:	Choose:
				Choose:	Choose:

PHOTOGRAPHS



Photo #: 1

P32, L1 initiated



Photo #: 2

P32, L1 tied into P31



Photo #: 3

P32 key trench



Photo #: 4

Topsoil berm pushed back with dozers

PHOTOGRAPHS



Photo #: 5

P31, L4 placement



Photo #: 6

P32, L1 compaction



Photo #: 7

P32 at end of day



Photo #: 8

P32 borrow area

Date:	July 14, 2022	Owner/Client:	New Gold Inc.
Day:	Thursday	Okane Project #:	1003-223
Prepared by:	Blake Weinrauch	Project Location:	Ontario

Number of Pages in Report 4

Environmental Conditions:

<u>Morning Conditions</u>		Weather	Clear	Precipitation	0 mm
Temperature (High/Low)	21 13	Humidity	80 to 100%	Wind	Low
<u>Afternoon Conditions</u>		Weather	Fair	Precipitation	0 mm
Temperature (High/Low)	24 21	Humidity	40 to 60%	Wind	Moderate

General Comments

General:

- P32 compaction testing began in the morning.
- Excavator utilized at the borrow area to load trucks and second excavator brought to EMRS. reclamation area for oversize rock removal, borehole permeameter excavation, and compaction testing.
- Borehole permeameter EMRS22_BP_P30_L2_B27_220714 casing installed and wet-up in Panel 30.
- Borehole permeameter EMRS22_BP_P30_L2_B28_220714 casing installed and wet-up in Panel 30.

P31, L4:

- L4 placement and grading continued throughout the morning. Toe grading was completed to assist in achieving positive drainage off the cover system.

P32, L1:

- Material testing was completed in the morning. Material appeared brownish grey, very moist, and pliable with some over size stone marked for removal.
- With several proctors available from the borrow area, the proctor believed to be most representative of the material utilized for P32, L1 was selected for compaction testing.
- Compaction testing produced satisfactory results and any additional oversized rock was removed following compaction testing.
- Lift fully covered by EOD.

P32, L2:

- Material continued to be hauled from the borrow source for use in L2. Material appeared dark grey, very moist, and was able to be rolled into a thin thread. There was a low amount of oversize rock noted.

CQA Representative:

<original signed by>

Issue #	Description	Location	Resolution	Monitor	Status
1	South side of P30, L2 reaching concerning levels of surface desiccation prior to coverage	South half of P30, L2 toe	South half P30, L2 covered with as much dark brown, moist, and pliable NCL material as possible prior to end of day by dozer	No	Open
2	Desiccated material on P30, L2 & L3 following pause of cover construction	Exposed areas of P30, L2 & L3	L2 trimmed and material was mixed/track packed before re-compaction, retesting, and survey. L3 material mixed prior to	No	Open
3	Elevation of topsoil berm greater then L4 in areas (Berm height increases progressing south)	0+793 - 0+562	Panels in the area to be monitored to evaluate if adequate runoff is achieved or if pooling occurs at the toe	Yes	Open
				Choose:	Choose:
				Choose:	Choose:

PHOTOGRAPHS



Photo #: 1

P32, L1 density testing



Photo #: 2

Repair following oversize rock removal from P32,
L1



Photo #: 3

EMRS22_BP_P30_L2_B27_220714 casing
installed



Photo #: 4

P31, L4 toe grading

PHOTOGRAPHS



Photo #: 5

P31, L4 nearing completion



Photo #: 6

Material used in P32, L2 very pliable

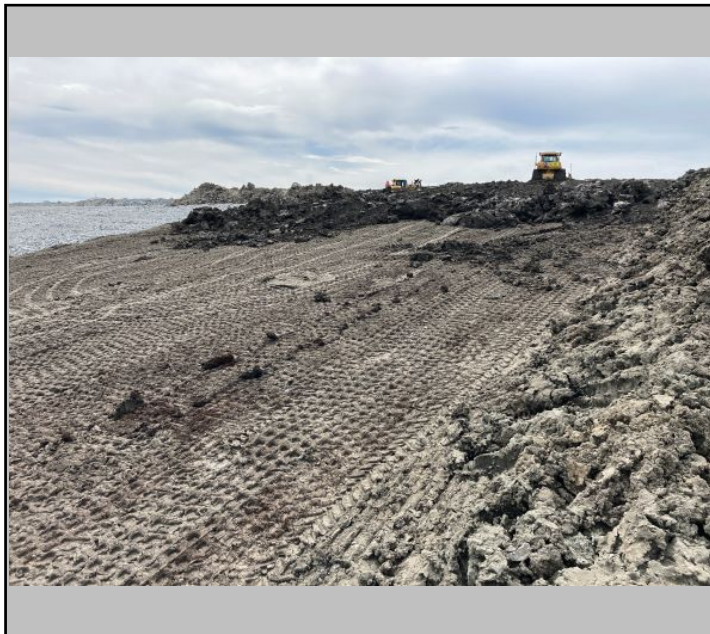


Photo #: 7

P32, L2 placement



Photo #: 8

P32, L2 fully covering L32, L1 by EOD

Date:	July 15, 2022	Owner/Client:	New Gold Inc.
Day:	Friday	Okane Project #:	1003-223
Prepared by:	Blake Weinrauch	Project Location:	Ontario

Number of Pages in Report 3

Environmental Conditions:

<u>Morning Conditions</u>		Weather	Clear	Precipitation	0 mm	
Temperature (High/Low)	226	15	Humidity	80 to 100%	Wind	Low
<u>Afternoon Conditions</u>		Weather	Clear	Precipitation	0 mm	
Temperature (High/Low)	33	26	Humidity	40 to 60%	Wind	Low

General Comments

General:

- P32 L2 compaction testing began in the late morning.
- Borehole permeameter EMRS22_BP_P30_L2_B27_220714 currently running.
- Borehole permeameter EMRS22_BP_P30_L2_B28_220714 currently running.

P31, L4:

- Final toe grading of L4 still required

P32, L2:

- Material continued to be hauled from the borrow source as L1. Material appeared dark grey, very moist, and was able to be rolled into a thin thread. There was a low amount of oversize rock noted.
- Compaction of the lift completed in the late morning. Material appeared very moist, but the compactor was establishing sufficient depth with the sheepsfoot.
- Compaction testing yielded similar results to P32, L1, indicating high moisture contents.
- Approximately half of the lift was covered by EOD.

P32, L3:

- Material appeared to be dark grey, very moist, and was actively hauled from the same Northern borrow source used in L1 and L2.

CQA Representative:

<original signed by>

Issue #	Description	Location	Resolution	Monitor	Status
1	South side of P30, L2 reaching concerning levels of surface desiccation prior to coverage	South half of P30, L2 toe	South half P30, L2 covered with as much dark brown, moist, and pliable NCL material as possible prior to end of day by dozer	No	Open
2	Desiccated material on P30, L2 & L3 following pause of cover construction	Exposed areas of P30, L2 & L3	L2 trimmed and material was mixed/track packed before re-compaction, retesting, and survey. L3 material mixed prior to	No	Open
3	Elevation of topsoil berm greater then L4 in areas (Berm height increases progressing south)	0+793 - 0+562	Panels in the area to be monitored to evaluate if adequate runoff is achieved or if pooling occurs at the toe	Yes	Open
				Choose:	Choose:
				Choose:	Choose:

PHOTOGRAPHS



Photo #: 1

P32, L2 compaction



Photo #: 2

P32, L2, post-compaction



Photo #: 3

Sheepsfoot roller depth throughout P32, L2

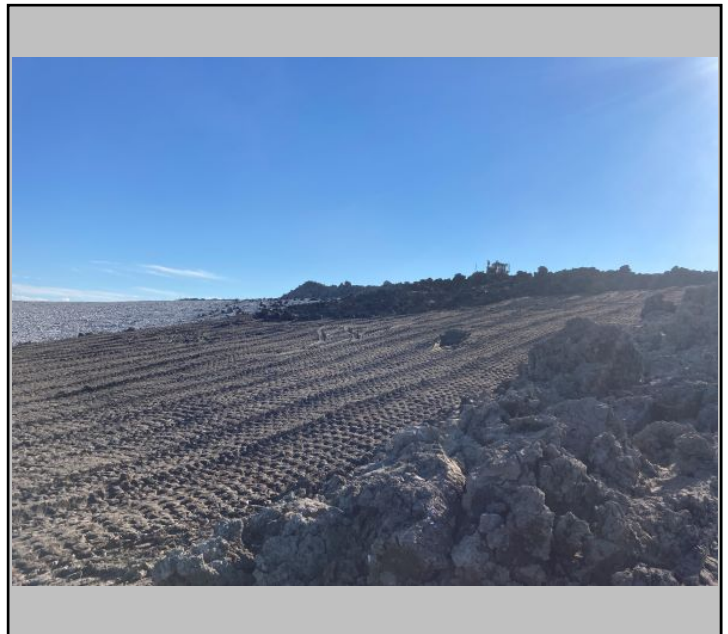


Photo #: 4

P32, L3 covering approximately half of P32, L2
by EOD

Date:	July 16, 2022	Owner/Client:	New Gold Inc.
Day:	Saturday	Okane Project #:	1003-223
Prepared by:	Blake Weinrauch	Project Location:	Ontario

Number of Pages in Report 3

Environmental Conditions:

<u>Morning Conditions</u>		Weather	Cloudy	Precipitation	0 mm	
Temperature (High/Low)	28	22	Humidity	60 to 80%	Wind	Low
<u>Afternoon Conditions</u>		Weather	Rain	Precipitation	5 - 10 mm	
Temperature (High/Low)	28	27	Humidity	60 to 80%	Wind	Moderate

General Comments

General:

- Borehole permeameter EMRS22_BP_P30_L2_B27_220714 currently running.
- Borehole permeameter EMRS22_BP_P30_L2_B28_220714 currently running.
- Intense rainfall and lightning stand-down occurred from approximately 2:45pm to 3:30pm
- Operations ceased following rainfall due to material being very wet and unworkable.

P31, L4:

- Final toe grading of L4 still required.

P32, L3:

- Material placement occurred for the morning with very wet material hauled from North Stockpile.
- Material was too moist for the dozers to traffic and the decision was made to switch to the Central Stockpile, which was drier.
- P32, L2 fully covered by the afternoon.

P33, L1:

- Material actively hauled from Central Stockpile.
- Discussed which material testing had been completed in this area with CQC. It was determined that most of the material in P30, and P31 CCL was from this location.
- An additional test pit was dug further into the stockpile to take an additional Proctor sample and view material quality.
- Material was dark grey with streaks of lighter brown material and moist.

CQA Representative:

<original signed by>

Issue #	Description	Location	Resolution	Monitor	Status
1	South side of P30, L2 reaching concerning levels of surface desiccation prior to coverage	South half of P30, L2 toe	South half P30, L2 covered with as much dark brown, moist, and pliable NCL material as possible prior to end of day by dozer	No	Open
2	Desiccated material on P30, L2 & L3 following pause of cover construction	Exposed areas of P30, L2 & L3	L2 trimmed and material was mixed/track packed before re-compaction, retesting, and survey. L3 material mixed prior to	No	Open
3	Elevation of topsoil berm greater then L4 in areas (Berm height increases progressing south)	0+793 - 0+562	Panels in the area to be monitored to evaluate if adequate runoff is achieved or if pooling occurs at the toe	Yes	Open
				Choose:	Choose:
				Choose:	Choose:

PHOTOGRAPHS



Photo #: 1

P32, L3 placement



Photo #: 2

Central Stockpile material used for part of P32,
L3 and all of P33, L1



Photo #: 3

P33, L1 material following rainfall



Photo #: 4

P32, L3 material following rainfall

Date:	July 17, 2022	Owner/Client:	New Gold Inc.
Day:	Sunday	Okane Project #:	1003-223
Prepared by:	Blake Weinrauch	Project Location:	Ontario

Number of Pages in Report 4

Environmental Conditions:

<u>Morning Conditions</u>		Weather	Fair	Precipitation	0 mm
Temperature (High/Low)	29 24	Humidity	40 to 60%	Wind	Low
<u>Afternoon Conditions</u>		Weather	Clear	Precipitation	0 mm
Temperature (High/Low)	33 30	Humidity	40 to 60%	Wind	Low

General Comments

General:

- Borehole permeameter EMRS22_BP_P30_L2_B27_220714 currently running.
- Borehole permeameter EMRS22_BP_P30_L2_B28_220714 currently running.
- Operations did not begin until mid-afternoon due to previous rainfall

P31, L4:

- Final toe grading of L4 still required.

P32, L3:

- Final grade needs to be achieved once material has dried sufficiently.

P33, L1:

- Material actively hauled from Central Stockpile.
- Material was dark grey with streaks of lighter brown material and moist.

P33 Key Trench

- Key trench reached bedrock consistently throughout the panel.

CQA Representative:

<original signed by>

Issue #	Description	Location	Resolution	Monitor	Status
1	South side of P30, L2 reaching concerning levels of surface desiccation prior to coverage	South half of P30, L2 toe	South half P30, L2 covered with as much dark brown, moist, and pliable NCL material as possible prior to end of day by dozer	No	Open
2	Desiccated material on P30, L2 & L3 following pause of cover construction	Exposed areas of P30, L2 & L3	L2 trimmed and material was mixed/track packed before re-compaction, retesting, and survey. L3 material mixed prior to	No	Open
3	Elevation of topsoil berm greater then L4 in areas (Berm height increases progressing south)	0+793 - 0+562	Panels in the area to be monitored to evaluate if adequate runoff is achieved or if pooling occurs at the toe	Yes	Open
				Choose:	Choose:
				Choose:	Choose:

PHOTOGRAPHS



Photo #: 1

Standing water at toe of P30



Photo #: 2

Standing water at toe of P32, L3



Photo #: 3

P33 key trench

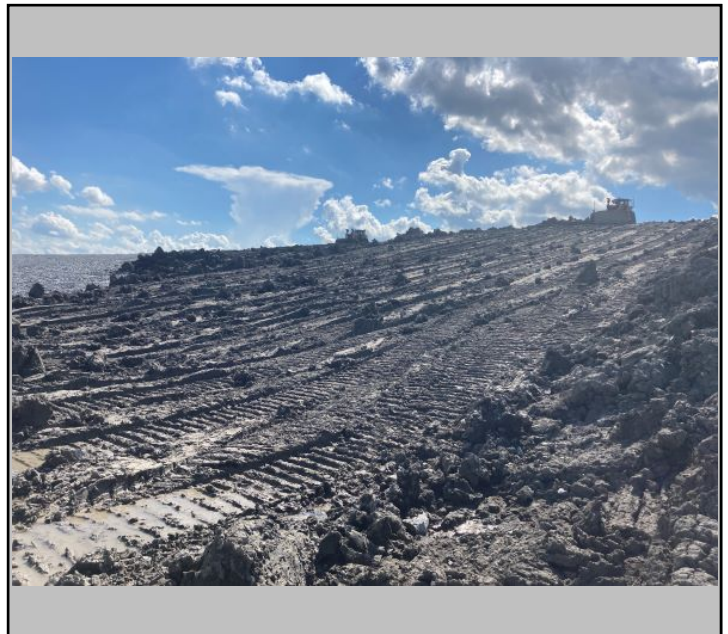


Photo #: 4

P32, L3

PHOTOGRAPHS



Photo #: 5

P33, L1 placement



Photo #: 6

P33, L1 placement



Photo #:



Photo #:

Date:	July 18, 2022	Owner/Client:	New Gold Inc.
Day:	Monday	Okane Project #:	1003-223
Prepared by:	Blake Weinrauch	Project Location:	Ontario

Number of Pages in Report 3

Environmental Conditions:

<u>Morning Conditions</u>		Weather	Rain	Precipitation	5 - 10 mm
Temperature (High/Low)	25 20	Humidity	80 to 100%	Wind	Low
<u>Afternoon Conditions</u>		Weather	Fair	Precipitation	0 - 5 mm
Temperature (High/Low)	31 25	Humidity	60 to 80%	Wind	Low

General Comments

General:

- Borehole permeameter EMRS22_BP_P30_L2_B27_220714 blown over during storm. Will resume test when construction restarts.
- Borehole permeameter EMRS22_BP_P30_L2_B28_220714 currently running.
- No operations in EMRS due to overnight and morning rainfall.
- Standing water present on slope; with pooling at toe of slope.

P33 Key Trench

- Key trench filled with water.

CQA Representative:

<original signed by>

Issue #	Description	Location	Resolution	Monitor	Status
1	South side of P30, L2 reaching concerning levels of surface desiccation prior to coverage	South half of P30, L2 toe	South half P30, L2 covered with as much dark brown, moist, and pliable NCL material as possible prior to end of day by dozer	No	Open
2	Desiccated material on P30, L2 & L3 following pause of cover construction	Exposed areas of P30, L2 & L3	L2 trimmed and material was mixed/track packed before re-compaction, retesting, and survey. L3 material mixed prior to	No	Open
3	Elevation of topsoil berm greater then L4 in areas (Berm height increases progressing south)	0+793 - 0+562	Panels in the area to be monitored to evaluate if adequate runoff is achieved or if pooling occurs at the toe	Yes	Open
				Choose:	Choose:
				Choose:	Choose:

PHOTOGRAPHS



Photo #: 1

Very wet P33, L1 material, with standing water at toe of P32, L3

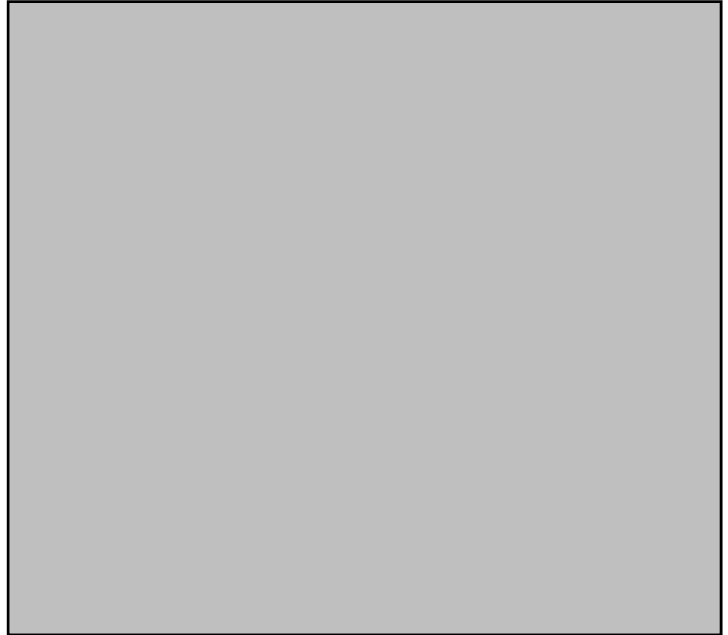


Photo #:



Photo #:



Photo #:

Date:	July 19, 2022	Owner/Client:	New Gold Inc.
Day:	Tuesday	Okane Project #:	1003-223
Prepared by:	Blake Weinrauch	Project Location:	Ontario

Number of Pages in Report 3

Environmental Conditions:

<u>Morning Conditions</u>		Weather	Cloudy	Precipitation	0 mm
Temperature (High/Low)	29 22	Humidity	60 to 80%	Wind	Low
<u>Afternoon Conditions</u>		Weather	Rain	Precipitation	5 - 10 mm
Temperature (High/Low)	29 21	Humidity	60 to 80%	Wind	Low

General Comments

General:

- Borehole permeameter EMRS22_BP_P30_L2_B28_220714 currently running.
- No operations in EMRS due to overnight and daily rainfall.
- Standing water present on slope; with pooling at toe of slope.

P33 Key Trench

- Key trench filled with water.

CQA Representative:

<original signed by>

Issue #	Description	Location	Resolution	Monitor	Status
1	South side of P30, L2 reaching concerning levels of surface desiccation prior to coverage	South half of P30, L2 toe	South half P30, L2 covered with as much dark brown, moist, and pliable NCL material as possible prior to end of day by dozer	No	Open
2	Desiccated material on P30, L2 & L3 following pause of cover construction	Exposed areas of P30, L2 & L3	L2 trimmed and material was mixed/track packed before re-compaction, retesting, and survey. L3 material mixed prior to	No	Open
3	Elevation of topsoil berm greater then L4 in areas (Berm height increases progressing south)	0+793 - 0+562	Panels in the area to be monitored to evaluate if adequate runoff is achieved or if pooling occurs at the toe	Yes	Open
				Choose:	Choose:
				Choose:	Choose:

PHOTOGRAPHS



Photo #: 1

Standing water at toe of P32, L3



Photo #: 2

P32, L3 material very wet



Photo #: 3

P33 key trench



Photo #: 4

P33, L1 material

Date:	July 20, 2022	Owner/Client:	New Gold Inc.
Day:	Wednesday	Okane Project #:	1003-223
Prepared by:	Blake Weinrauch	Project Location:	Ontario

Number of Pages in Report 4

Environmental Conditions:

<u>Morning Conditions</u>		Weather	Cloudy	Precipitation	0 mm
Temperature (High/Low)	25 21	Humidity	60 to 80%	Wind	Moderate
<u>Afternoon Conditions</u>		Weather	Clear	Precipitation	0 mm
Temperature (High/Low)	28 26	Humidity	40 to 60%	Wind	Moderate

General Comments

General:

- Borehole permeameter EMRS22_BP_P30_L2_B28_220714 currently running.
- No operations in EMRS due to previous days rainfall.
- Excavator operator present in the afternoon to create some drainage channels for standing water off of the toe of the cover system
- Excavator also created two new test pits adjacent to where EMRS22_BP_P30_L2_B27_220714 and EMRS22_BP_P30_L2_B28_220714 were installed for new tests to be set up. Previous test pits had become completely filled with water, potentially impacting hydraulic conductivity testing. New test pits were created with positive drainage to prevent any future rainfall from accumulating in pits.

CQA Representative:

<original signed by>

Issue #	Description	Location	Resolution	Monitor	Status
1	South side of P30, L2 reaching concerning levels of surface desiccation prior to coverage	South half of P30, L2 toe	South half P30, L2 covered with as much dark brown, moist, and pliable NCL material as possible prior to end of day by dozer	No	Open
2	Desiccated material on P30, L2 & L3 following pause of cover construction	Exposed areas of P30, L2 & L3	L2 trimmed and material was mixed/track packed before re-compaction, retesting, and survey. L3 material mixed prior to	No	Open
3	Elevation of topsoil berm greater than L4 in areas (Berm height increases progressing south)	0+793 - 0+562	Panels in the area to be monitored to evaluate if adequate runoff is achieved or if pooling occurs at the toe	Yes	Open
				Choose:	Choose:
				Choose:	Choose:

PHOTOGRAPHS



Photo #: 1

P32, L3 material



Photo #: 2

P33, L1 material.



Photo #: 3

Draining water from toe of P33, L1



Photo #: 4

New test pit dug beside
EMRS22_BP_P30_L2_B28_220714

PHOTOGRAPHS



Photo #: 5

New test pit dug beside
EMRS22_BP_P30_L2_B27_220714



Photo #: 6

P32, L3 drainage



Photo #:



Photo #:



Date:	July 21, 2022	Owner/Client:	New Gold Inc.
Day:	Thursday	Okane Project #:	1003-223
Prepared by:	Blake Weinrauch	Project Location:	Ontario

Number of Pages in Report 3

Environmental Conditions:

<u>Morning Conditions</u>	Weather	Clear	Precipitation	0 mm
Temperature (High/Low)	26	18	Humidity	40 to 60%
			Wind	Moderate
<u>Afternoon Conditions</u>	Weather	Fair	Precipitation	0 mm
Temperature (High/Low)	27	26	Humidity	40 to 60%
			Wind	High

General Comments

General:

- Discussed drainage of standing water at the toe of P30, P31, and P32. Marked out the end of the key trench for operators to establish positive drainage.
- Material actively hauled from the center stockpile for use in P33, L1; P32, L3; and stockpiled for use in P32, L4.

P31, L4:

- Final toe grading completed. Tulloch completed survey to confirm lift thickness.

P32, L3:

- Continued placement of L3. Material was very moist and there was significant standing water still present at the toe, Material was pushed onto the toe to bring the lift to grade, remove excess water, and improve trafficability.

P33, L1:

- NG operator performed track packing to speed up the drying process of the material. Material was very moist, with some surface drying, and was dark grey in colour with streaks of light brown material present. Minimal rock present.

CQA Representative:

<original signed by>

Issue #	Description	Location	Resolution	Monitor	Status
1	South side of P30, L2 reaching concerning levels of surface desiccation prior to coverage	South half of P30, L2 toe	South half P30, L2 covered with as much dark brown, moist, and pliable NCL material as possible prior to end of day by dozer	No	Open
2	Desiccated material on P30, L2 & L3 following pause of cover construction	Exposed areas of P30, L2 & L3	L2 trimmed and material was mixed/track packed before re-compaction, retesting, and survey. L3 material mixed prior to	No	Open
3	Elevation of topsoil berm greater then L4 in areas (Berm height increases progressing south)	0+793 - 0+562	Panels in the area to be monitored to evaluate if adequate runoff is achieved or if pooling occurs at the toe	Yes	Open
				Choose:	Choose:
				Choose:	Choose:

PHOTOGRAPHS



Photo #: 1

P31, L4 toe grading



Photo #: 2

P32, L3 placement

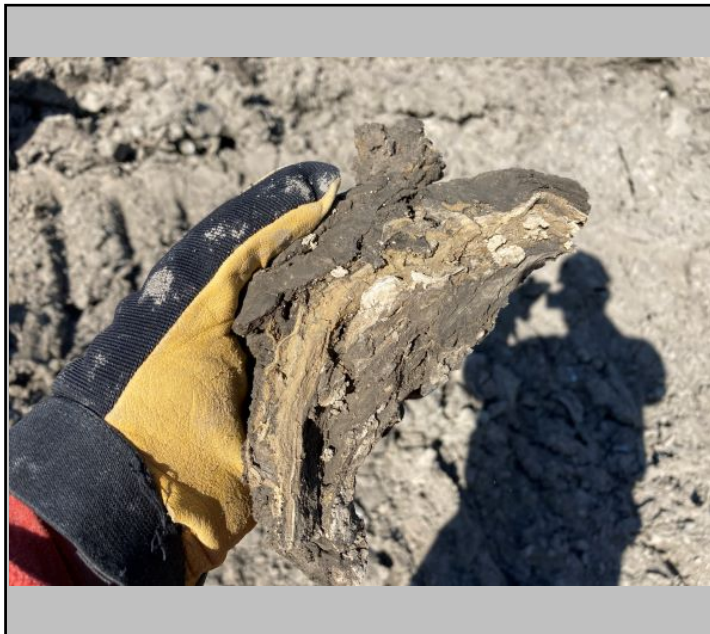


Photo #: 3

Material used in P33, L1. Dark grey with streaks of lighter brown material present



Photo #: 4

P33, L1 placement

Date:	July 22, 2022	Owner/Client:	New Gold Inc.
Day:	Friday	Okane Project #:	1003-223
Prepared by:	Blake Weinrauch	Project Location:	Ontario

Number of Pages in Report 3

Environmental Conditions:

<u>Morning Conditions</u>	Weather	Clear	Precipitation	0 mm
Temperature (High/Low)	27	18	Humidity	40 to 60%
			Wind	High
<u>Afternoon Conditions</u>	Weather	Clear	Precipitation	0 mm
Temperature (High/Low)	28	27	Humidity	40 to 60%
			Wind	High

General Comments

General:
 - Began hydraulic conductivity re-testing on P30. Test EMRS22_BP_P30_L2_B29_220721 began recording and test EMRS22_BP_P30_L2_B30_220722 casing was installed and wet up.

P33, L1:
 - Final grading of lift was completed and any oversize rocks were marked for removal. Upon removal of oversize rocks and replacement of competent material, P33, L1 was compacted and tested. Material testing on P33, L1 showed sufficient compaction had been reached, and moisture contents were wet of optimum.

P33, L2:
 - Material continued to be hauled from central stockpile. The better quality material was stockpiled for use in P33, L2, and lower quality material was stockpiled for use in P32, L3 and L4.
 - Material appeared dark grey with streaks of lighter brown material, and moist. L2 was placed at a reduced thickness across all of P33, L1 to reduce surface drying.

CQA Representative:

<original signed by>

Issue #	Description	Location	Resolution	Monitor	Status
1	South side of P30, L2 reaching concerning levels of surface desiccation prior to coverage	South half of P30, L2 toe	South half P30, L2 covered with as much dark brown, moist, and pliable NCL material as possible prior to end of day by dozer	No	Open
2	Desiccated material on P30, L2 & L3 following pause of cover construction	Exposed areas of P30, L2 & L3	L2 trimmed and material was mixed/track packed before re-compaction, retesting, and survey. L3 material mixed prior to	No	Open
3	Elevation of topsoil berm greater then L4 in areas (Berm height increases progressing south)	0+793 - 0+562	Panels in the area to be monitored to evaluate if adequate runoff is achieved or if pooling occurs at the toe	Yes	Open
				Choose:	Choose:
				Choose:	Choose:

PHOTOGRAPHS



Photo #: 1

P33, L1 placement



Photo #: 2

P33, L3 compacted



Photo #: 3

P33, L2 placement at reduced thickness



Photo #:

Date:	July 23, 2022	Owner/Client:	New Gold Inc.
Day:	Saturday	Okane Project #:	1003-223
Prepared by:	Blake Weinrauch	Project Location:	Ontario

Number of Pages in Report 3

Environmental Conditions:

<u>Morning Conditions</u>		Weather	Rain	Precipitation	5 - 10 mm
Temperature (High/Low)	18 17	Humidity	80 to 100%	Wind	Low
<u>Afternoon Conditions</u>		Weather	Showers	Precipitation	5 - 10 mm
Temperature (High/Low)	24 18	Humidity	60 to 80%	Wind	Low

General Comments

General:

- EMRS22_BP_P30_L2_B29_220721 currently recording.
- EMRS22_BP_P30_L2_B30_220722 installed and is currently recording

P33, L2:

- Material switched to being hauled from Northern stockpile. Material was visibly wet, and difficult to traffic. Minimal placement completed, some material stockpiled at crest of slope and ready for placement after drying.

P32, L3:

- Minimal placement of existing stockpiled material on the crest before rain began.

CQA Representative:

<original signed by>

Issue #	Description	Location	Resolution	Monitor	Status
1	South side of P30, L2 reaching concerning levels of surface desiccation prior to coverage	South half of P30, L2 toe	South half P30, L2 covered with as much dark brown, moist, and pliable NCL material as possible prior to end of day by dozer	No	Open
2	Desiccated material on P30, L2 & L3 following pause of cover construction	Exposed areas of P30, L2 & L3	L2 trimmed and material was mixed/track packed before re-compaction, retesting, and survey. L3 material mixed prior to	No	Open
3	Elevation of topsoil berm greater then L4 in areas (Berm height increases progressing south)	0+793 - 0+562	Panels in the area to be monitored to evaluate if adequate runoff is achieved or if pooling occurs at the toe	Yes	Open
				Choose:	Choose:
				Choose:	Choose:

PHOTOGRAPHS

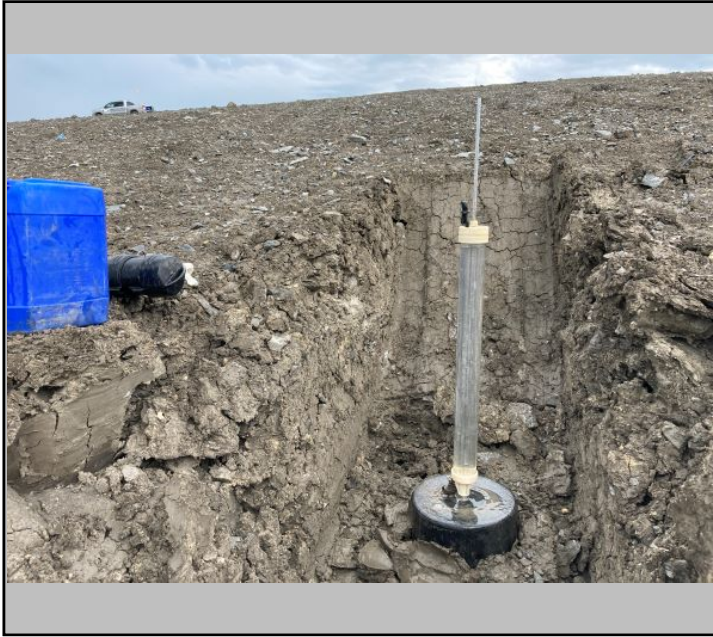


Photo #: 1

Photo #:

EMRS22_BP_P30_L2_B30_220722 installed and recording



Photo #:

Photo #:

Date:	July 24, 2022	Owner/Client:	New Gold Inc.
Day:	Sunday	Okane Project #:	1003-223
Prepared by:	Blake Weinrauch	Project Location:	Ontario

Number of Pages in Report 3

Environmental Conditions:

<u>Morning Conditions</u>		Weather	Cloudy	Precipitation	0 mm
Temperature (High/Low)	18 15	Humidity	60 to 80%	Wind	Low
<u>Afternoon Conditions</u>		Weather	Fair	Precipitation	0 mm
Temperature (High/Low)	21 19	Humidity	40 to 60%	Wind	Moderate

General Comments

General:

- EMRS22_BP_P30_L2_B29_220721 currently recording.
- EMRS22_BP_P30_L2_B30_220722 currently recording.
- Excavator present on site to create drainage pathways on toe of P32 and P33.
- No other active operations at EMRS due to wet material.

CQA Representative:

<original signed by>

Issue #	Description	Location	Resolution	Monitor	Status
1	South side of P30, L2 reaching concerning levels of surface desiccation prior to coverage	South half of P30, L2 toe	South half P30, L2 covered with as much dark brown, moist, and pliable NCL material as possible prior to end of day by dozer	No	Open
2	Desiccated material on P30, L2 & L3 following pause of cover construction	Exposed areas of P30, L2 & L3	L2 trimmed and material was mixed/track packed before re-compaction, retesting, and survey. L3 material mixed prior to	No	Open
3	Elevation of topsoil berm greater than L4 in areas (Berm height increases progressing south)	0+793 - 0+562	Panels in the area to be monitored to evaluate if adequate runoff is achieved or if pooling occurs at the toe	Yes	Open
				Choose:	Choose:
				Choose:	Choose:

PHOTOGRAPHS



Photo #: 1

P32, L3 slope



Photo #: 2

P32, L3 toe



Photo #: 3

P33, L2 slope



Photo #: 4

P33, L2 toe

Date:	July 25, 2022	Owner/Client:	New Gold Inc.
Day:	Monday	Okane Project #:	1003-223
Prepared by:	Blake Weinrauch	Project Location:	Ontario

Number of Pages in Report 3

Environmental Conditions:

<u>Morning Conditions</u>	Weather	Clear	Precipitation	0 mm
Temperature (High/Low)	22	12	Humidity	60 to 80%
			Wind	Low
<u>Afternoon Conditions</u>	Weather	Fair	Precipitation	0 mm
Temperature (High/Low)	24	22	Humidity	40 to 60%
			Wind	Low

General Comments

General:

- EMRS22_BP_P30_L2_B29_220721 currently recording.
- EMRS22_BP_P30_L2_B30_220722 currently recording.
- Operations ceased in early afternoon due to wet material.
- Frost found within Northern stockpile
- Additional material was stockpiled where P34 will be located to promote drying/use all available material

P32, L3:

- Final grading completed. Tulloch surveyed and confirmed appropriate lift thickness

P32, L4:

- Material actively hauled from North stockpile for use in P32, L4. Sandier/siltier loads of material used for L4.

P33, L2:

- Material actively hauled from North stockpile. Less sandy/silty loads were used for L2.
- Material appeared very moist, and dark brown with some streaks of light brown. Minimal rocks present.

CQA Representative:

<original signed by>

Issue #	Description	Location	Resolution	Monitor	Status
1	South side of P30, L2 reaching concerning levels of surface desiccation prior to coverage	South half of P30, L2 toe	South half P30, L2 covered with as much dark brown, moist, and pliable NCL material as possible prior to end of day by dozer	No	Open
2	Desiccated material on P30, L2 & L3 following pause of cover construction	Exposed areas of P30, L2 & L3	L2 trimmed and material was mixed/track packed before re-compaction, retesting, and survey. L3 material mixed prior to	No	Open
3	Elevation of topsoil berm greater then L4 in areas (Berm height increases progressing south)	0+793 - 0+562	Panels in the area to be monitored to evaluate if adequate runoff is achieved or if pooling occurs at the toe	Yes	Open
				Choose:	Choose:
				Choose:	Choose:

PHOTOGRAPHS



Photo #: 1

P32, L4 placement



Photo #: 2

P33, L2 placement



Photo #: 3

Material dumped at crest for P34



Photo #:

Date:	July 26, 2022	Owner/Client:	New Gold Inc.
Day:	Tuesday	Okane Project #:	1003-223
Prepared by:	Blake Weinrauch	Project Location:	Ontario

Number of Pages in Report 3

Environmental Conditions:

<u>Morning Conditions</u>		Weather	Showers	Precipitation	0 - 5 mm
Temperature (High/Low)	19 17	Humidity	80 to 100%	Wind	Low
<u>Afternoon Conditions</u>		Weather	Fair	Precipitation	0 mm
Temperature (High/Low)	25 19	Humidity	40 to 60%	Wind	Low

General Comments

General:

- EMRS22_BP_P30_L2_B29_220721 currently recording.
- EMRS22_BP_P30_L2_B30_220722 currently recording.
- No operations in EMRS due to wet material

CQA Representative:
<original signed by>

Issue #	Description	Location	Resolution	Monitor	Status
1	South side of P30, L2 reaching concerning levels of surface desiccation prior to coverage	South half of P30, L2 toe	South half P30, L2 covered with as much dark brown, moist, and pliable NCL material as possible prior to end of day by dozer	No	Open
2	Desiccated material on P30, L2 & L3 following pause of cover construction	Exposed areas of P30, L2 & L3	L2 trimmed and material was mixed/track packed before re-compaction, retesting, and survey. L3 material mixed prior to	No	Open
3	Elevation of topsoil berm greater then L4 in areas (Berm height increases progressing south)	0+793 - 0+562	Panels in the area to be monitored to evaluate if adequate runoff is achieved or if pooling occurs at the toe	Yes	Open
				Choose:	Choose:
				Choose:	Choose:

PHOTOGRAPHS



Photo #: 1

P33, L2 placement

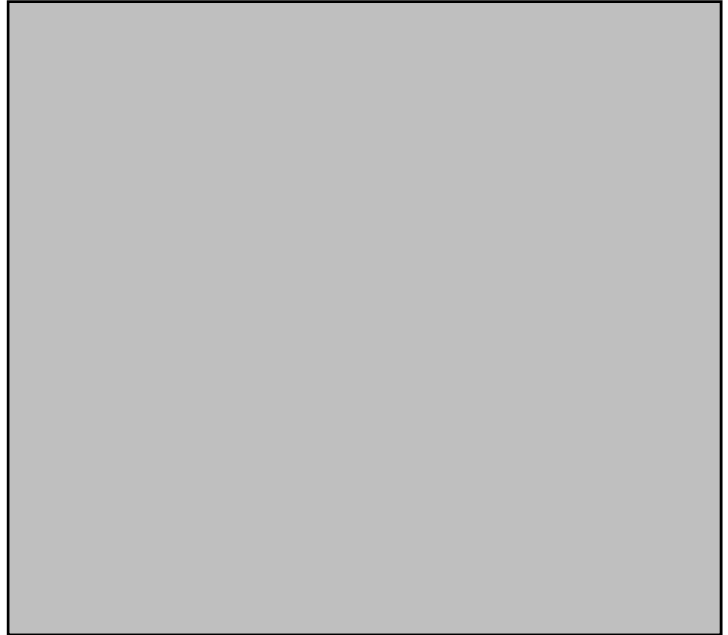


Photo #:



Photo #:



Photo #: