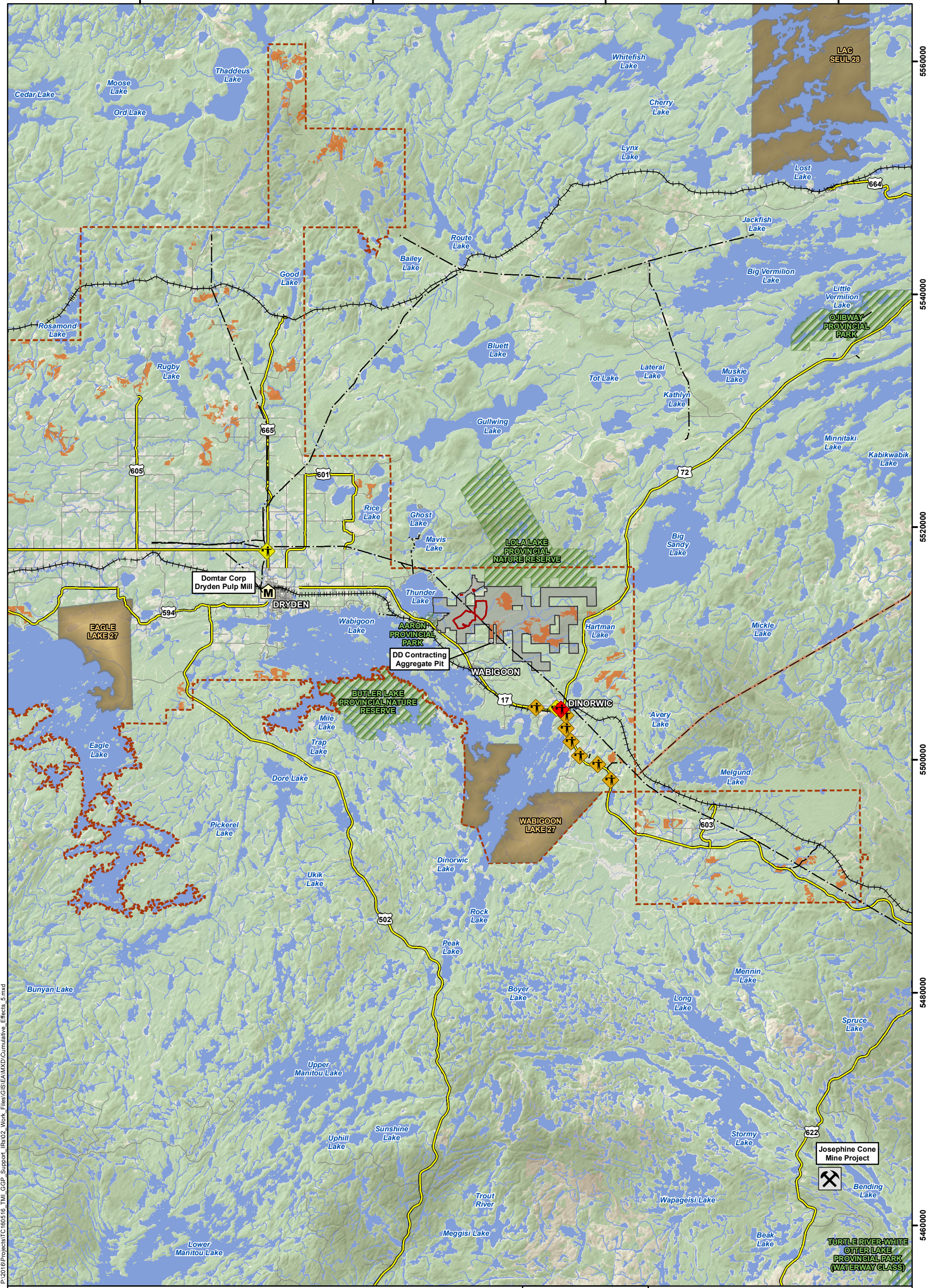


500000

520000

540000

560000



P:\2016\Projects\TC160516_TML_GGP_Support_IRs\02_Work_Files\GIS\EA\MXD\Cumulative_Effects_5.mxd

LEGEND

- Operations Area
- Treasury Metals Exploration Program
- X Josephine Cone Mine Project
- M Domtar Corp Dryden Pulp Mill
- Proposed Wataynikanayap Power
- Transmission Line
- DD Contracting Aggregate Pit
- Canadian Pacific Railway
- First Nation Reserves
- Provincial Parks
- Dryden Forest Management Unit
- Planned Harvest Areas (2016 - 2021)
- Highway
- Local Road
- MNDM Proposed Road Works (2017-2021)
- ◆ Bridge Rehabilitation
- ◆ Culvert Replacement
- ◆ Resurfacing

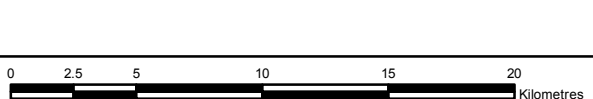
NOTES:

- Topographic data extracted from Land Information Ontario, MNR.
- MNDM proposed road works extracted from Northern Highways Program 2017-2021.
- Planned harvest areas were digitized from Dryden Forest Management Units Operational Planning Maps.
- Wataynikanayap Power routes extracted from 'Phase 1 Draft ES', Golder Associates, 2016.



GOLIATH GOLD PROJECT

Projects Considered in Cumulative Effects Assessment



Datum: NAD83
Projection: UTM Zone 15N

PROJECT N°: TC160516
SCALE: 1:300,000

FIGURE: 7.2.2-1
DATE: April 2018