

Table 6.1.3.20-1: Aboriginal People VCs, Indicators, and Measures

Valued Components (VCs)	Indicators	Measures
Human Health	Risk Assessment for Indigenous Human Health	Potential risks relative to Health Canada risk benchmarks
	Surface Water Quality	Changes in concentrations
	Groundwater Quality	Changes in concentrations
	Soil Quality	Changes in concentrations
	Ambient Air Quality	Changes in concentrations
Harvesting and gathering of plant material	Wild rice	Loss of wild rice areas
		Changes in water quality
		Changes in water levels
		Quality for consumption
	Berry Harvesting	Loss of potential harvest areas
		Quality for consumption
	Medicinal plant harvesting	Loss of forest
		Loss of wetland
		Quality for consumption
	Changes in access	Land where access is controlled
Lands removed from access		
Diminished on-the-land experience	Changed views	
	Noticeable changes in noise	
Hunting	Ungulates	Habitat loss
		Quality for consumption
	Furbearers	Habitat loss
	Waterfowl	Habitat loss
		Quality for consumption
	Changes in access	Land where access is controlled
		Lands removed from access
	Diminished on-the-land experience	Changed views
Noticeable changes in noise		
Trapping	Furbearers	Habitat loss
	Changes in access	Land where access is controlled
		Lands removed from access
	Diminished on-the-land experience	Changed views
Noticeable changes in noise		
Fishing	Sport fish	Change in abundance
		Quality for consumption
	Baitfish	Change in abundance
	Commercial fishing	Fish for consumption (sport fish)
		Baitfish collection
	Changes in access	Land where access is controlled
		Lands removed from access
Diminished on-the-land experience	Changed views	
	Noticeable changes in noise	

Table 6.1.3.20-1: Aboriginal People VCs, Indicators, and Measures (continued)

Valued Components (VCs)	Indicators	Measures
Cultural and spiritual	Cultural or spiritual sites	Loss or disturbance to known sites
		Restriction of access
	Traditional Travel routes	Interruption - discontinued
		Interference – close to project and
	Diminished on-the-land experience	Changed views
		Noticeable changes in noise
Socio-economic factors	Economic effects	Aboriginal employment opportunities
		Cost of living
		Project purchases from Aboriginal businesses
	Social effects	In- and out-migration
		Capacity of education services
		Education attainment
		Project-specific Training
		Housing availability
		Property values (off reserve)
		Capacity of emergency services
		Road network capacity and conditions



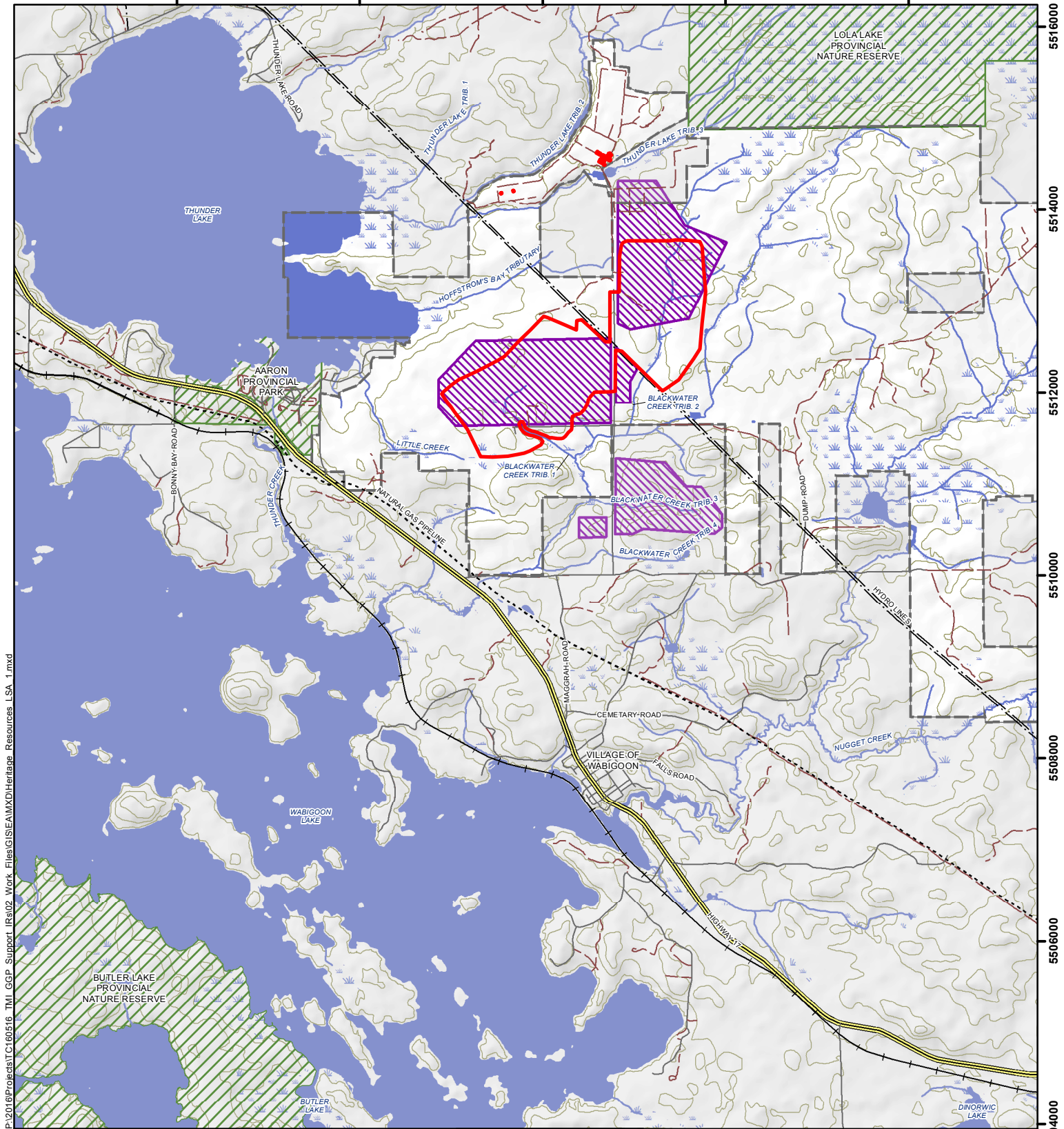
Treasury Metals
Revised EIS Report
Goliath Gold Project
April 2018



Table 6.1.3.20-1: Aboriginal People VCs, Indicators, and Measures (continued)

524000 526000 528000 530000 532000

5516000
5514000
5512000
5510000
5508000
5506000
5504000



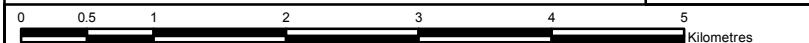
P:\2016\Projects\TC160516_TMI_GGP_Support_IRs\02_Work_Files\GIS\EA\MXD\Heritage_Resources_LSA_1.mxd

LEGEND

- Operations Area
- Heritage Resources Local Study Area
- Railway
- Hydro Line
- Natural Gas Pipeline
- Highway
- Local Street
- Resource / Recreation Trail
- Provincial Park
- Watercourse
- Waterbody
- Contours (10 m interval)
- Property Boundary of Claims and Dispositions
- Area Beyond Property Boundary

NOTES:
 - Topographic data extracted from Land Information Ontario (LIO), MNRF.
 - Watercourses represent pre-development conditions based on LIO database, as modified by KBM.

Datum: NAD83
 Projection: UTM Zone 15N



GOLIATH GOLD PROJECT

Heritage Resources Local Study Area (LSA)

PROJECT N^o: TC160516

FIGURE: 6.1.4.19-1

SCALE: 1:57,000

DATE: March 2018