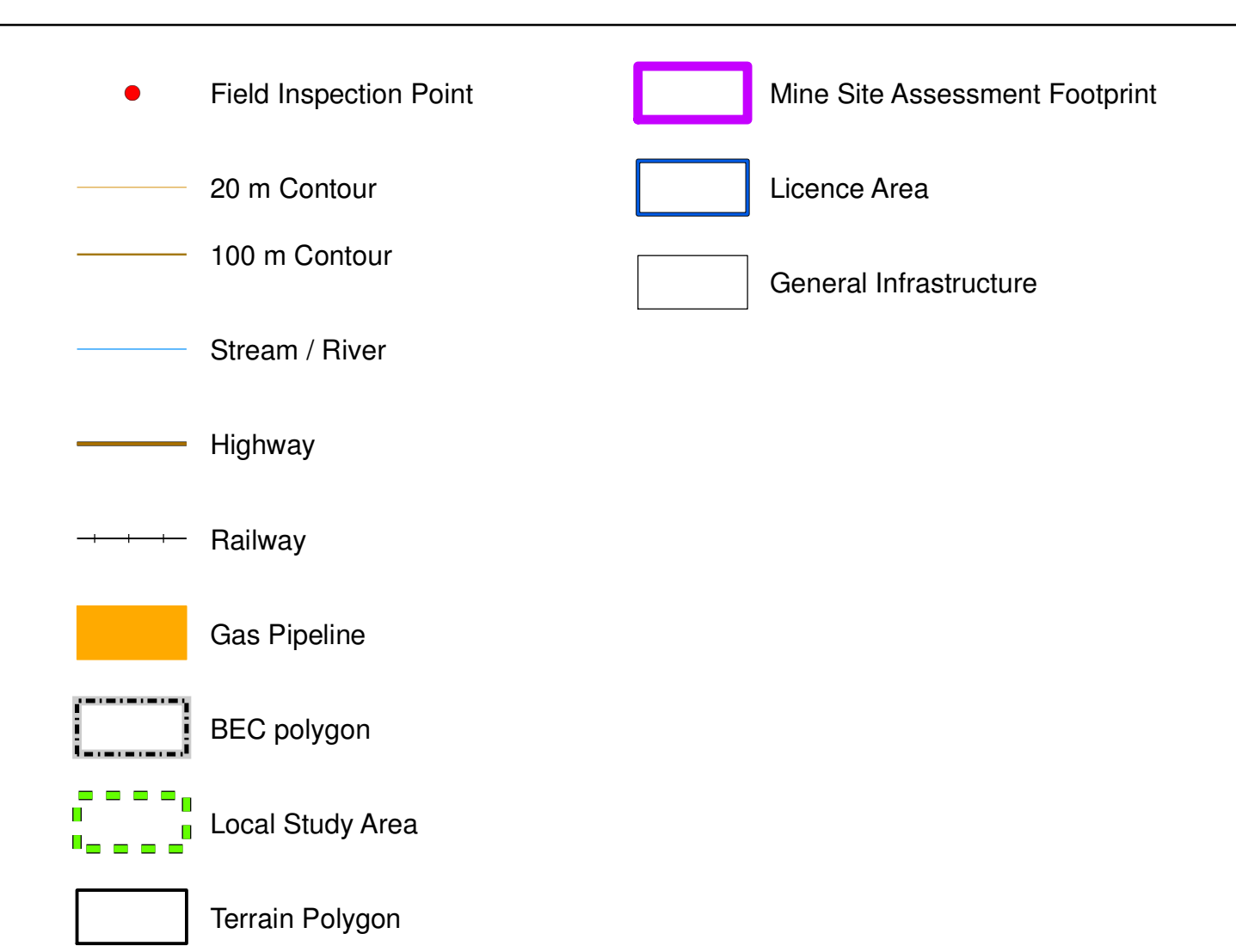
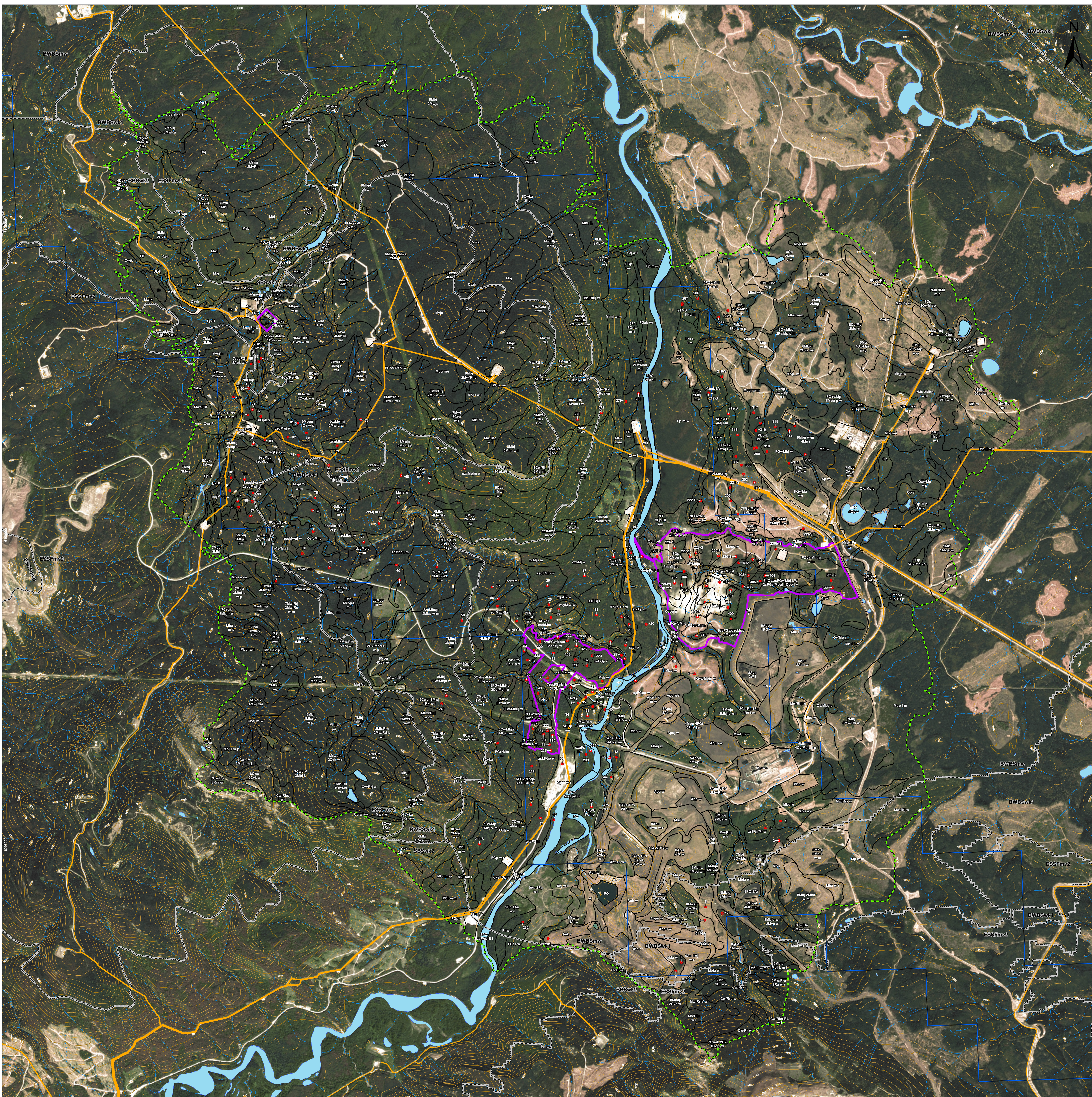


## ***Appendix 10-C***

*Murray River Coal Project: Terrain Map of the Local Study Area*

MURRAY RIVER COAL PROJECT

**Application for an Environmental Assessment Certificate / Environmental Impact Statement**



**Surficial Material**

- A – Anthropogenic – material disturbances associated with human activity
- C – Colluvium – product of gravity-driven mass wastage along slopes, often characterized by angular coarse fragments and sandy to coarse-loamy texture
- D – Weathered Bedrock – in situ highly weathered bedrock
- F – Fluvial – materials deposited in and by moving water, often well sorted, high coarse fragment content, rounded particles
- FG – Glacioluvial – ice contact materials deposited by rivers associated with melting glaciers, often stratified, high coarse fragment content, rounded particles
- L – Lacustrine – material deposited in standing water, typically of fine texture with very few coarse fragments
- LA – Lake
- M – Moraine – materials deposited directly by glaciers, typically clay loams with variable coarse fragment content, sub-rounded to sub-angular particles
- O – Organic – accumulation of materials derived from vegetation, typically associated with wet soils, depressions, predominantly fibric or mesic textures
- PO – Pond
- R – Bedrock – rock outcrops covered by less than 10 cm of soil
- RI – River

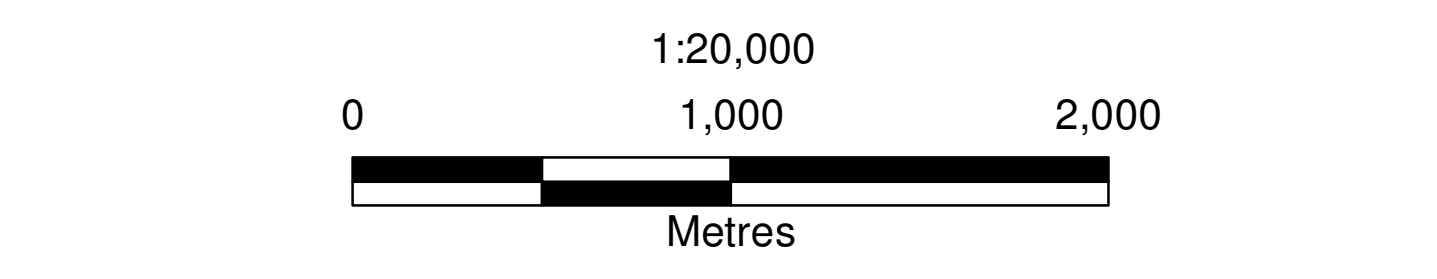
<b>Surface Expression</b>	<b>Drainage</b>
a – moderate slope	x – very rapid
b – blanket	r – rapid
d – depression	w – well drained
f – fan	m – moderately well
h – hummocky	l – imperfect
j – gentle slope	p – poor
k – moderately steep slope	v – very poor
m – rolling	
p – plain	
r – ridge	
s – steep slope	
t – terrace	
u – undulating	
v – veneer	
x – thin veneer	

**Sample Terrain Label**

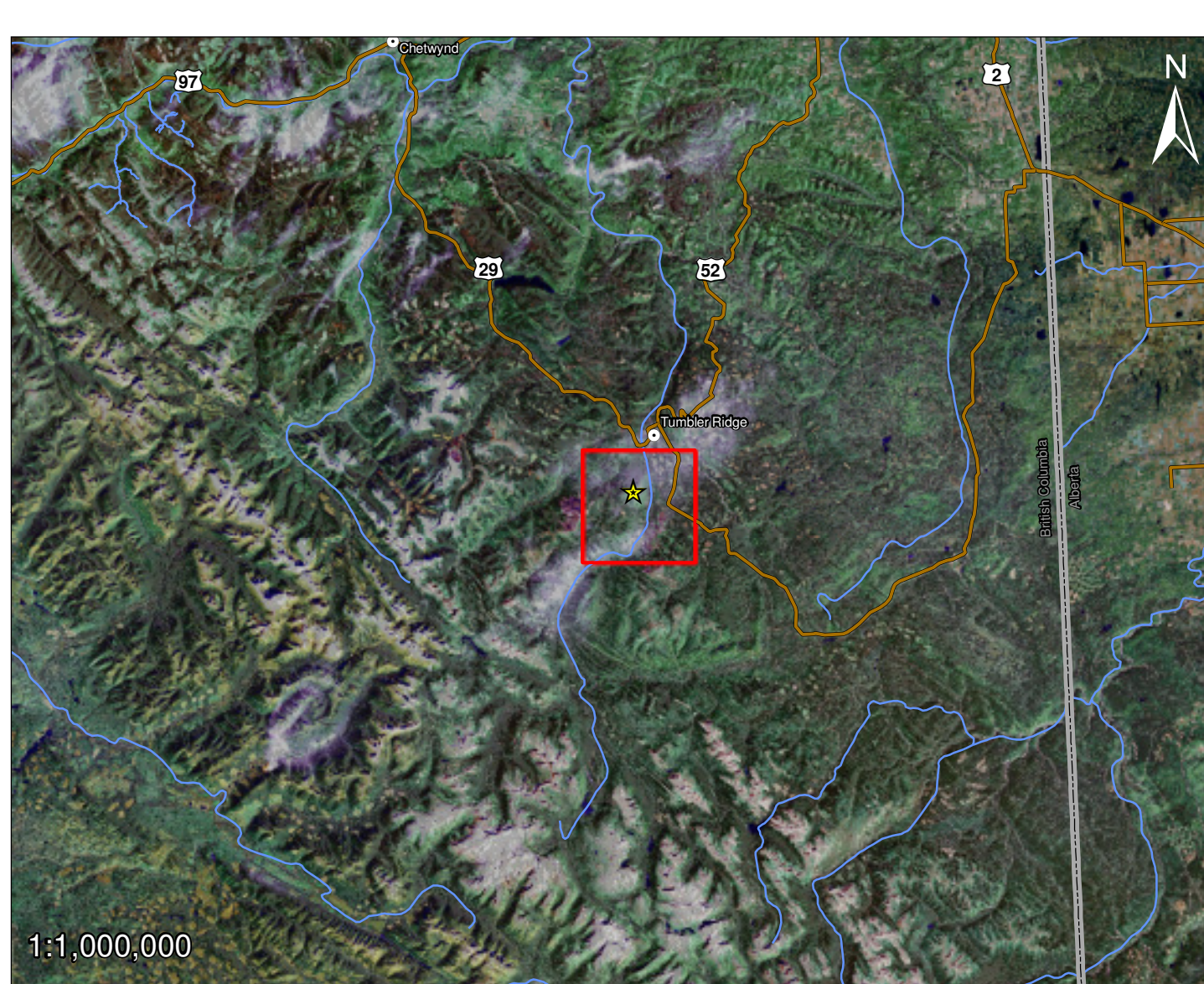
Surface Expression    Surface Expression    Surficial Material    Geomorphological Process

1st Decile – 70v/MbjL    3Mbj-L    m-l

Surficial Material    Subsurface Material    2nd Decile    Drainage    Surface Expression



Contains information licensed under the Open Government Licence – British Columbia and Canada. Includes material © CNES 2011, Distribution Aerial Services / Spot Image Corporation, USA, all rights reserved. Note: Polygons under 2 ha have not been labelled. Version TG 13 July 11, 2014. Projection: NAD 83 UTM Zone 18N



ERM Rescan		15th Floor, 1111 West Hastings Street Vancouver, B.C. Canada V6E 2J3 Tel: +1 604.689.9460 Fax: +1 604.687.4277	
Project	Murray River	Site	British Columbia
Figure	Appendix 10-C    Terrain Map of the Local Study Area		
Scale	1:20,000	Project Number	0194106-0005-0607
Revision	00	Date	July 11, 2014
Client	HD MINING INTERNATIONAL LTD – Murray River Coal Project		
Size	36x44in	Layout	T0.13
Checked by	AP	Prepared by	JR
File	MUR-17-046		