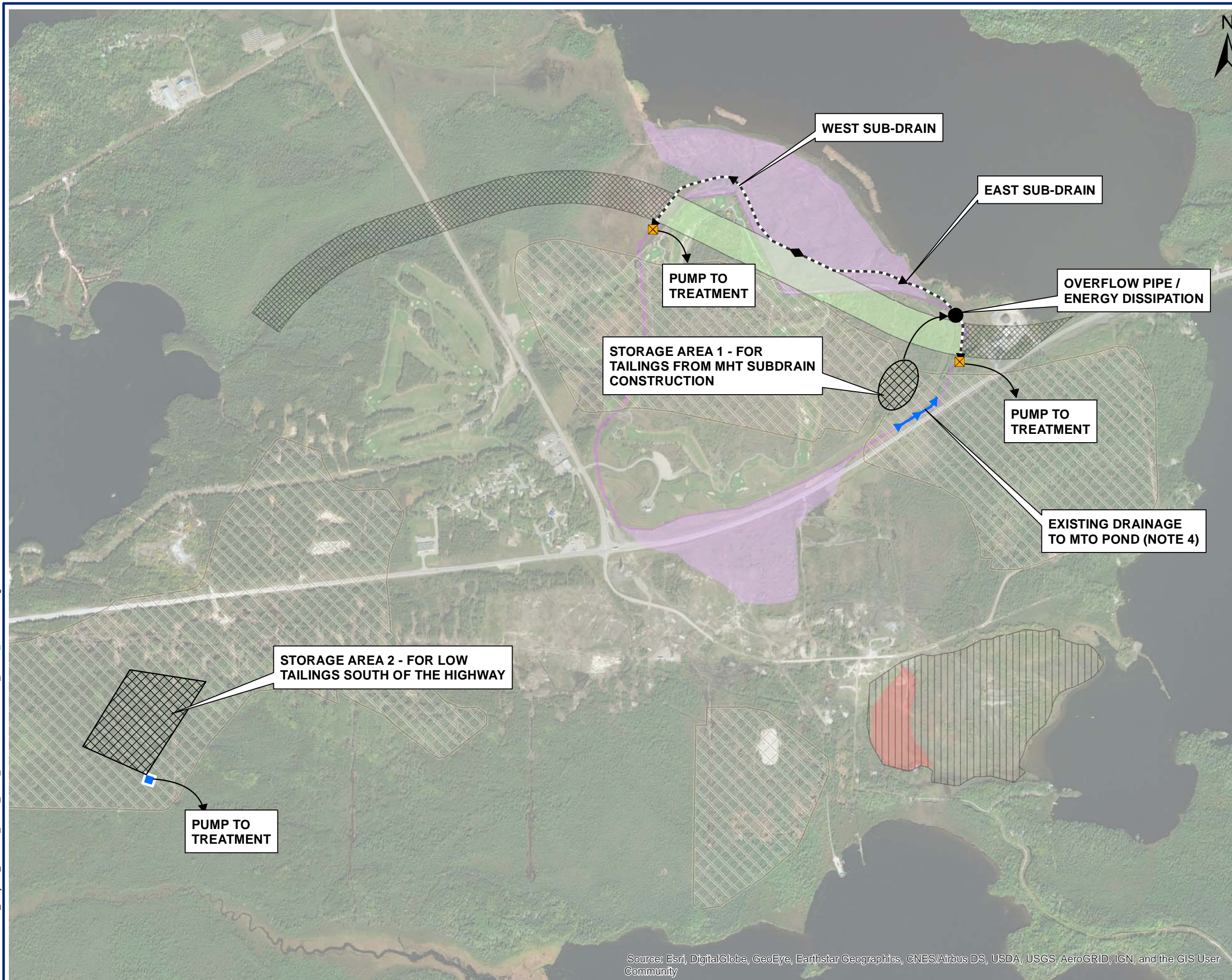


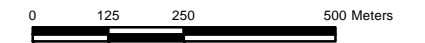
**FIGURE: HISTORIC TAILINGS STORAGE
LOCATIONS**

N:\Markham\GIS\Projects_GIS\209_10003_GGM_Hardrock\11.MXD\209_10002_HistoricTailings2.mxd



LEGEND

- Pump Station for contact water (to WTP)
- Surface Drain
- Storage Facility Excavated Historic Tailings
- Collection Subdrain
- Seepage Collection Pond
- MTO Road Allowance
- MTO Road Allowance - Zone of non-contact water management by others
- Limit of Future Stockpile
- Hardrock Tailings
- MacLeod High Tailings
- MacLeod Low Tailings
- Reactive Tailings Area



SCALE: 1:12,500
WHEN PLOTTED CORRECTLY AT 11 x 17
NAD 1983 UTM Zone 16N

- NOTES**
1. This map is for conceptual purposes only and should not be used for navigational purposes.
 2. Non-contact stormwater is runoff not affected by seeps, excavation or consolidation
 3. Non-contact water treatment is separate (TSS Only)
 4. To reduce existing surface flow at south side of MHT place surface drainage media and till cover, as required

**GREENSTONE GOLD MINES
HARDROCK PROJECT**

**CONCEPTUAL DESIGN
HARDROCK FEASIBILITY STUDY**

**HISTORIC TAILINGS STORAGE
LOCATIONS**

February 7, 2018	Rev 0	Figure No.
Project No. 209.10002.00000		1



Source: Esri, DigitalGlobe, GeoEye, Earthstar Geographics, CNES/Airbus DS, USDA, USGS, AeroGRID, IGN, and the GIS User Community