

# Greenstone Mine

## Current Use of Lands and Resources for Traditional Purposes – Follow-Up Plan Annual Report

HP-MG003-EV-136-0055\_0

December 28, 2023

Date	Rev	Status		Prepared By	Checked By	Approved By
12/28/2023	0		Signature:	N/A	N/A	<original signed by>
			Name:	Stantec	Stantec	Kendra Button Greenstone Mine

## Table of Contents

1	Introduction .....	3
1.1	Mine Overview .....	3
1.2	Mine Location .....	4
1.3	Follow-up Plan Purpose and Scope .....	4
2	Roles and Responsibilities .....	6
3	Follow-Up Program.....	6
3.1	Monitoring During the Reporting Period.....	8
4	Reporting.....	10
4.1	Monitoring Results .....	10
4.2	Conclusion .....	10

## List of Figures

Figure 1:	Site Plan .....	5
Figure 2:	East Service Road.....	7

## List of Tables

Table 2.1:	Roles and Responsibilities for the Current Use Plan .....	6
Table 3.1:	Monitoring Program Details .....	10

## 1 Introduction

Greenstone Gold Mines GP Inc. (GGM) is constructing and planning to operate and ultimately decommission/close a new open pit gold mine, process plant, and associated ancillary facilities, collectively known as the Greenstone Mine (the Mine).

A federal Environmental Impact Statement (EIS) was required for the Mine under the *Canadian Environmental Assessment Act* (CEAA 2012). The federal EIS Decision statement was issued on December 13, 2018 and amended on February 10, 2021. In addition to the federal EIS, GGM entered into a Voluntary Agreement with the Ministry of the Environment and Climate Change (MOECC), now Ministry of Environment, Conservation and Parks (MECP), to complete a provincial individual Environmental Assessment (EA) under the *Ontario Environmental Assessment Act* (EAA). The provincial EA Notice of Approval to Proceed with the Undertaking under Section 9 of the Environmental Assessment Act was issued on March 12, 2019. Conditions of Approval were issued by both the federal and provincial governments.

The Current Use of Lands and resources for Traditional Purposes Follow-Up Plan was developed to address condition 6.9 of the federal Decision statement. Annual reporting, documented herein, is required under the Current Use of Lands and Resources for Traditional Purposes Follow-Up Plan.

### 1.1 Mine Overview

The Greenstone Mine deposit will be mined as an open pit. The process plant will operate 365 days per year with a Life of Mine (LOM) of approximately 15 years. Mill operations will be variable up to a nominal maximum throughput of 30,000 tonnes per day (tpd) as conditions warrant.

The overall Mine development schedule will consist of the following main phases, during which various Mine activities will be completed:

- Construction: Years -3 to -1 with early ore stockpiling commencing after the first year of construction;
- Operation: Years 1 to 15, with Year 1 representing a transition from construction to operation; and,
- Closure: Years 16 to 20 for Active Closure and Years 21 to 36 for Post-Closure.

Key mine components of the project development area (PDA) are an open pit, waste rock storage areas, overburden storage areas, ore stockpile, ore crushing, and mill feed ore storage activities, process plant, water management facilities, tailings management facility, power plant and associated infrastructure, and explosives facility. Ancillary Mine components are buildings, service water supply and associated infrastructure, sewage and effluent treatment plants, site roads, watercourse crossings, realignments, and habitat compensation/offsets, onsite pipelines and piping, fuel and hazardous materials storage, aggregate sources, and temporary camp.

Pre-Construction infrastructure that was located within the PDA included a portion of Highway 11, a Ministry of Transportation Patrol Yard, an Ontario Provincial Police Station and Hydro One Networks Inc. facilities. During 2023 all of the facilities were relocated (or commenced relocation), excluding the Police Station, which is scheduled for relocation in 2025. Refer to Figure 1 for the current mine site plan.

## 1.2 Mine Location

The Mine is located in northwestern Ontario, approximately 275 kilometers (km) northeast of Thunder Bay, in the Municipality of Greenstone, Ward of Geraldton. The Mine is accessed at the intersection of Highway 11 and Michael Power Boulevard. Highway 11 currently traverses north of the Mine property in an east-west direction.

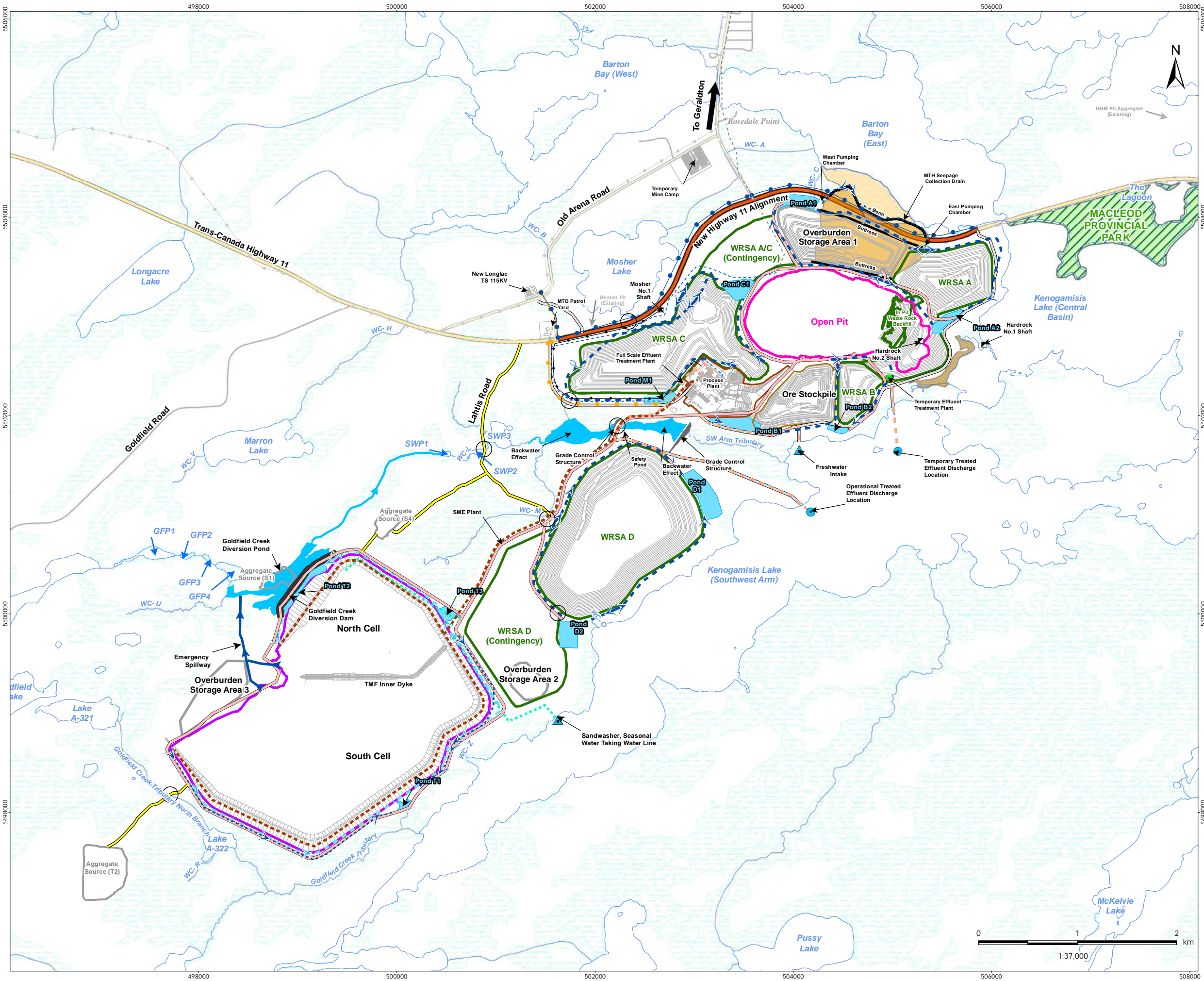
The Mine site consists of a contiguous block of patented claims, leases, licenses of occupation, and staked claims held by GGM.

## 1.3 Follow-up Plan Purpose and Scope

The Current Use of Lands and Resources for Traditional Purposes Follow-Up Plan (Current Use Plan) was developed to satisfy Condition 6.9 of the federal Decision Statement:

*Develop, prior to construction and in consultation with Indigenous groups, a follow-up program to verify the accuracy of the environmental assessment and determine the effectiveness of mitigation measures as it pertains to the adverse environmental effects of the Designated Project on the current use of lands and resources for traditional purposes, including access to the Southwest Arm of Kenogamisis Lake referred to in condition 6.1 and access along Goldfield Road and to the Goldfield Creek diversion channel referred to in condition 6.2. The Proponent shall implement the follow-up program during all phases of the Designated Project.*

Indigenous groups are listed in the Decision Statement (1.18) as: Animiigoos Zaagiigan Anishinaabek (AZA), Aroland First Nation (AFN), Ginoogaming First Nation (GFN), Long Lake #58 First Nation (LL58), and Métis Nation of Ontario (MNO). In addition, the Provincial Notice of Approval identifies Red Sky Métis Nation of Ontario (RSMIN) as an Indigenous Community.



- Legend**
- |   |   |
|---|---|
| <ul style="list-style-type: none"> <li>● Discharge Location</li> <li>■ Existing Mine Shaft</li> <li>▲ Freshwater Intake</li> <li>■ Temporary Effluent Treatment Plan</li> <li>○ Watercrossing</li> <li>— Access Road</li> <li>— Construction Access Road</li> <li>— Diversion Channel</li> <li>— Emergency Spillways</li> <li>— Haul Road</li> <li>— Potable Water Pipeline</li> <li>— Pipeline (Intake and Discharge)</li> <li>— 44 kV Distribution Line</li> <li>— 12.5 kV Distribution Line</li> <li>— 115 kV Transmission Line</li> <li>— Seepage Collection Ditch</li> <li>— Subsurface Seepage Collection System</li> <li>— Contact Water Collection Ditch</li> <li>— Tailings Pipeline and 13.8 kV Distribution Line</li> <li>— Water Line</li> <li>— Aggregate Source</li> <li>— Collection Ponds</li> <li>— Open Pit- Full Extent</li> <li>— Ore Stockpile</li> <li>— Process Plant Area</li> <li>— Tailings Management Facility</li> <li>— Waste Rock Storage Area</li> </ul> | <ul style="list-style-type: none"> <li>— Highway Realignment</li> <li>— New Highway 11 Alignment</li> <li>— Existing Features*</li> <li>— Highway</li> <li>— Major Road</li> <li>— Local Road</li> <li>— Existing Power Line</li> <li>— Existing Potable Water Pipeline</li> <li>— Watercourse</li> <li>— Provincial Park</li> <li>— Waterbody</li> <li>— Wetland (Eco-Site Based)</li> <li>— Historical Tailings Areas</li> <li>— Historical Hardrock Tailings</li> <li>— Historical MacLeod High Tailings</li> <li>— Historical MacLeod Low Tailings</li> </ul> |
|---|---|

**Notes**

- Coordinate System: NAD 1983 UTM Zone 16N
- Base features produced under license with the Ontario Ministry of Natural Resources © Queen's Printer for Ontario, 2013.
- \* Existing Features have been removed in the PDA and do not reflect current conditions.

December 2022  
160961223

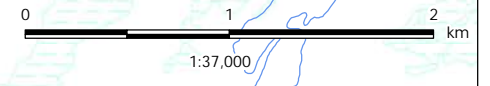
Client/Project  
Greenstone Gold Mines GP Inc. (GGM)  
Hardrock Project

---

Figure No.  
1

---

Title  
Optimized Site Plan  
(Current as of May 2019)



V:\01609\active\160961223\drawing\WXD\160961223\_Fig\_1\_2\_OptimizedSitePlan\_20221213.mxd  
 Revised: 2022-12-13 By: dhanvey

## 2 Roles and Responsibilities

The roles and responsibilities for key GGM staff responsible for implementing the Current Use Plan are provided in Table 2.1.

**Table 2.1: Roles and Responsibilities for the Current Use Plan**

Title or Position	Key Responsibilities
Director, Environment, and Community Relations	<ul style="list-style-type: none"> <li>Oversee implementation of the Current Use Plan to facilitate compliance with the plan and environmental permits, regulations, commitments and best practices.</li> </ul>
Community Planning Liaison	<ul style="list-style-type: none"> <li>Work with Environment Superintendent to implement the Current Use Plan and related processes.</li> <li>Coordinate Indigenous Relations team members and tracking and reporting on communications related to current use.</li> </ul>
Superintendent, Environment	<ul style="list-style-type: none"> <li>Participate in EASs with Indigenous groups.</li> <li>Share results of follow-up and monitoring programs with Indigenous group EASs.</li> </ul>
Environmental Advisory Sub-Committees (EAS)	<ul style="list-style-type: none"> <li>Review and provide input into the Current Use Plan during development in consultation with communities and input on adaptive management.</li> </ul>
Environmental Technicians	<ul style="list-style-type: none"> <li>Participate in the monitoring activities at site as directed by the Superintendent, Environment.</li> <li>Share information and obtain community feedback and relaying to the EASs and GGM for discussion.</li> </ul>

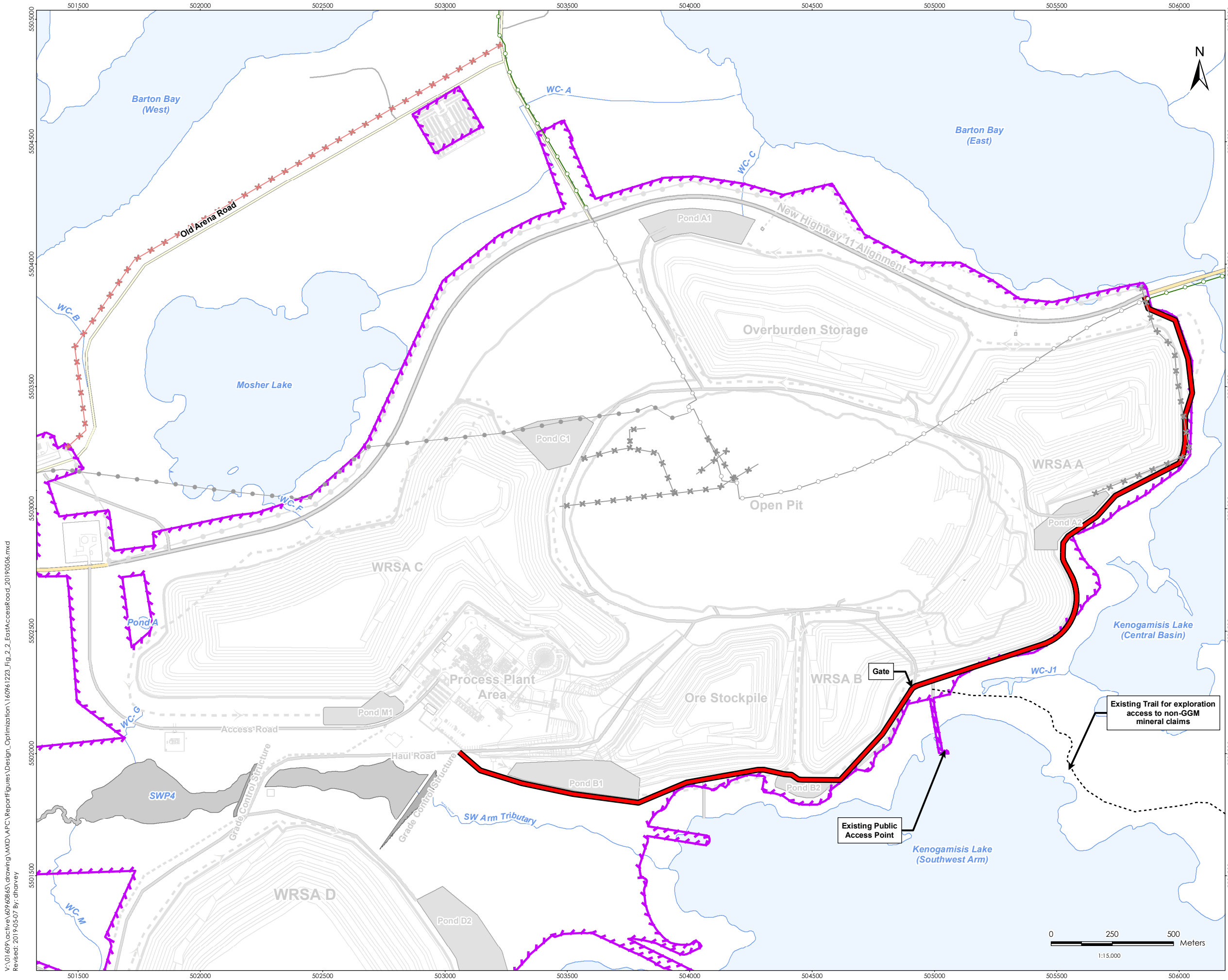
Note: Titles and key responsibilities are anticipated to be updated in the next iteration of the Current Use Follow-up Plan Report to reflect updated roles and tasks. Information above reflects anticipated titles and responsibilities as outlined in the Current Use Follow-up Plan.

## 3 Follow-Up Program

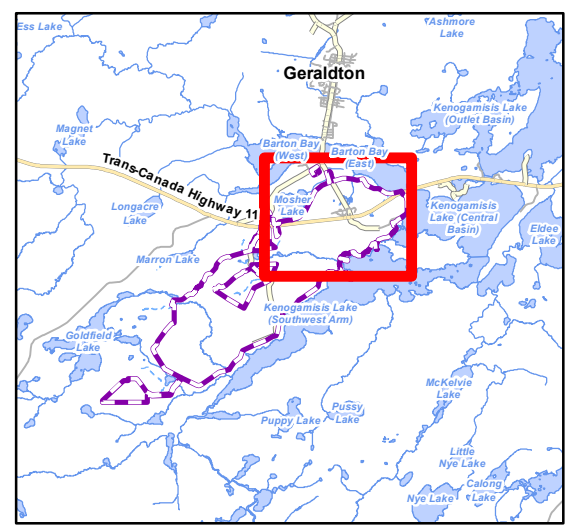
As specified in Condition 6.1 of the federal Decision Statement:

*“The Proponent shall establish, in consultation with Indigenous groups and prior to undertaking construction activities that will restrict access to the Southwest Arm of Kenogamisis Lake, alternate unrestricted access to the Southwest Arm of Kenogamisis Lake and shall maintain that alternate access during all phases of the Designated Project, to the extent that such access is safe”.*

In follow up to a commitment made in the EIS/EA, GGM has included a public access road from Highway 11 along the east side of the PDA to maintain access to the Southwest Arm of Kenogamisis Lake (see Figure 1 and Figure 2). This EA commitment outcome was documented in the Outcome of Detailed Engineering Design Optimization Report (April 30, 2019). The Optimization Report was circulated to Indigenous groups and no concerns were identified.



- Legend**
- Project Development Area (Final EIS/EA)
  - East Access Road (Added Post-Final EIS/EA)
  - Existing Trail
  - Highway
  - Major Road
  - Local Road
  - Existing Power Line
  - Existing 44 kV Distribution Line to Remain
  - Existing 12.5 kV Distribution Line to Remain
  - Existing 115 kV Transmission Line to be Removed
  - Existing 44 kV Distribution Line to be Removed
  - Existing 12.5 kV Distribution Line to be Removed
  - Watercourse
  - Waterbody



**Notes**

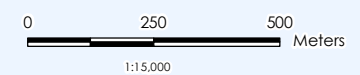
1. Coordinate System: NAD 1983 UTM Zone 16N
2. Base features produced under license with the Ontario Ministry of Natural Resources © Queen's Printer for Ontario, 2013.

May 2019  
160961223

Client/Project  
Greenstone Gold Mines GP Inc. (GGM)  
Hardrock Project

Figure No.  
**2**

Title



**East Access Road**

V:\01609\active\160961223\drawing\WXD\APC\ReparFigures\Design\_Optimization\160961223\_Fig\_2\_2\_EastAccessRoad\_20190506.mxd  
Revised: 2019-05-07 By: dhanvey

As specified in Condition 6.2 of the federal Decision Statement:

*“The Proponent shall maintain unrestricted access along Goldfield Road during all phases of the Designated Project and to the Goldfield Creek diversion channel starting when the Proponent has completed progressive reclamation referred to in condition 4.2 and until the end of decommissioning, to the extent that such access is safe”.*

Goldfield Road is located outside of the PDA and no effects on Goldfield Road access are anticipated as a result of the Mine.

For the Goldfield Creek diversion channel, the main access point of Lahtis Road will be closed during construction and operation due to safety reasons (EIS/EA, Chapter 16). Lahtis Road was closed during the reporting period. Signage was posted by GGM around the perimeter of the PDA, including the shoreline of Kenogamisis Lake, to alert local land and resource users of the presence of the Mine. At Closure, Lahtis Road is planned to be re-opened to public traffic up to the point of the Goldfield Creek diversion (Closure Plan, Section 9.7 and 11.1). GGM will work with the Indigenous groups via their respective EAS to determine more precisely when Lahtis Road will be re-opened. During construction and operations, GGM will facilitate site tours for representatives of the Indigenous groups to access the Goldfield Creek diversion channel to observe its establishment and progress.

### 3.1 Monitoring During the Reporting Period

GGM is committed to ongoing dialogue with Indigenous groups with respect to monitoring effects of the Mine on current use for traditional purposes throughout all Mine phases. GGM’s Communications Plan, Community-Specific Consultation Plans and agreements established with the Indigenous groups will guide the manner in which GGM will carry out its work.

In consultation with Indigenous groups, GGM has developed procedures for Indigenous groups to communicate their concerns about adverse environmental effects caused by the Mine related to access to and use of lands for traditional purposes. GGM has also developed procedures to document and respond in a timely manner to concerns received and demonstrate how issues have been addressed.



Environmental Technicians and EASs are key mechanisms for communications related to the Current Use Plan, including verifying the accuracy of the environmental assessment and determining the effectiveness of mitigation measures. The committees include members from local Indigenous groups and meetings are held regularly. The committees review relevant Mine documentation, and the meetings provide a forum for community representatives and GGM to discuss environment and community related matters and collaborate to resolve concerns and recommendations. The Environmental Technicians, having a key role in liaising back to their respective communities and advising GGM and the EAS of feedback from their membership, are well-positioned to inform how the implementation of Mine mitigation measures for access are working and if concerns need to be addressed.

In addition, Implementation coordinators are utilized. “Implementation Coordinator” or “Coordinator” means the implementation coordinator to be appointed by each of the First Nations in accordance. Each of the First Nations employs an Implementation Coordinator appointed by, and responsible to the First Nation. The Coordinator takes direction from the First Nation Chief and Council or their designate. The Long-Term Relationship Agreement (Agreement) Implementation Coordinator is responsible for assisting with the execution of the Agreement between the First Nation and Greenstone. The Implementation Coordinator manages the implementation, reporting and oversight of the Agreement on behalf of the First Nation. The Implementation Coordinator works closely with First Nation Members and Chief and Council to ensure that the First Nation Members can benefit to the greatest extent possible from the Agreement.

GGM and the Indigenous groups will work collaboratively on the follow-up program development and implementation:

- GGM leads the sharing of information related to alternate unrestricted access to the Southwest Arm of Kenogamisis Lake, Goldfield Road, and the Goldfield Creek diversion channel. For example, GGM kept the EASs informed on progress made with the development of the east access road and date for when it was opened to the public.
- Environmental Technicians for the Indigenous groups lead the collection and sharing of feedback from community members with GGM related to current use of land. The monitoring program approach is adaptive and depends on areas of interest identified with Indigenous groups, which may change over time.

Table 3.1 outlines the parameters, methodology, location, frequency, timing and duration of monitoring associated with the follow-up program.

**Table 3.1: Monitoring Program Details**

Performance Objective	Monitoring Parameter	Method	Location	Frequency	Timing	Duration
Accessibility to the Southwest Arm of Kenogamisis Lake	User inputs on ability to access Southwest Arm of Kenogamisis Lake	Environmental Technicians are responsible for obtaining community feedback/concern. These are discussed at EAS meetings.	PDA/LAA	Continuous / ad-hoc	Year-round	All phases of Mine life
Unrestricted access to the use of Goldfield Road	User inputs on ability to access Goldfield Road	Environmental Technicians are responsible for obtaining community feedback/concern. These are discussed at EAS meetings	LAA	Continuous / ad-hoc	Year-round	All phases of Mine life
Unrestricted access to the Goldfield Creek diversion channel	User inputs on ability to use Lahtis Road to access the Diversion Channel	Environmental Technicians are responsible for obtaining community feedback/concern. These are discussed at EAS meetings	PDA	Continuous / ad-hoc	Year-round	Closure (note Lahtis road is closed for the duration of construction and operations due to safety reasons)

## 4 Reporting

### 4.1 Monitoring Results

There have been no changes to access during this reporting period. Lahtis road continues to remain closed to the public due to safety concerns and will remain closed throughout Mine operations. Site tours are scheduled as needed for communities and EASs to view the Goldfield Creek diversion and associated infrastructure.

### 4.2 Conclusion

Greenstone Gold Mines has worked with the Indigenous Communities through the Environmental Advisory Sub-Committees during the reporting period to address the Environmental Assessment Commitments made regarding Current Use of Lands and Resources for Traditional Purposes.