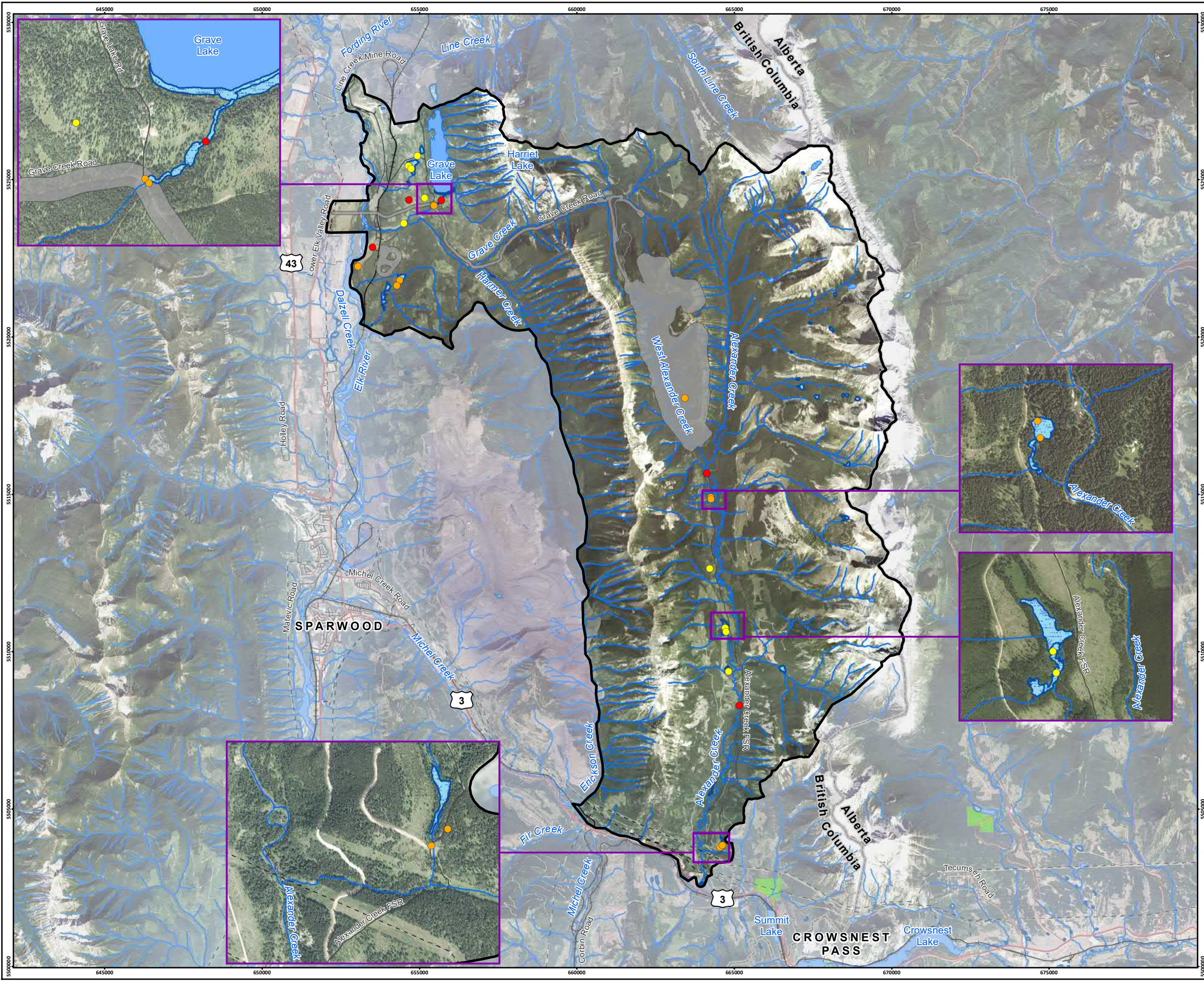


# Appendix 15-F

---

Incidental Woodpecker Observations  
in the Terrestrial LSA



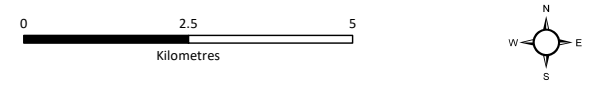


### Crown Mountain Coking Coal Project

**Figure 15-F.1**  
American Three-toed, Downy, and Pileated Woodpecker Observations

#### LEGEND

- American Three-toed Woodpecker Observation
- Downy Woodpecker Observation
- Pileated Woodpecker Observation
- Terrestrial Local Study Area
- Project Footprint
- Highway
- Arterial/Collector Road
- Local/Resource Road
- +— Railway
- - - Transmission Line
- Watercourse
- Waterbody
- Wetland
- Provincial Park/Protected Area
- British Columbia/Alberta Border



Scale 1:115,000

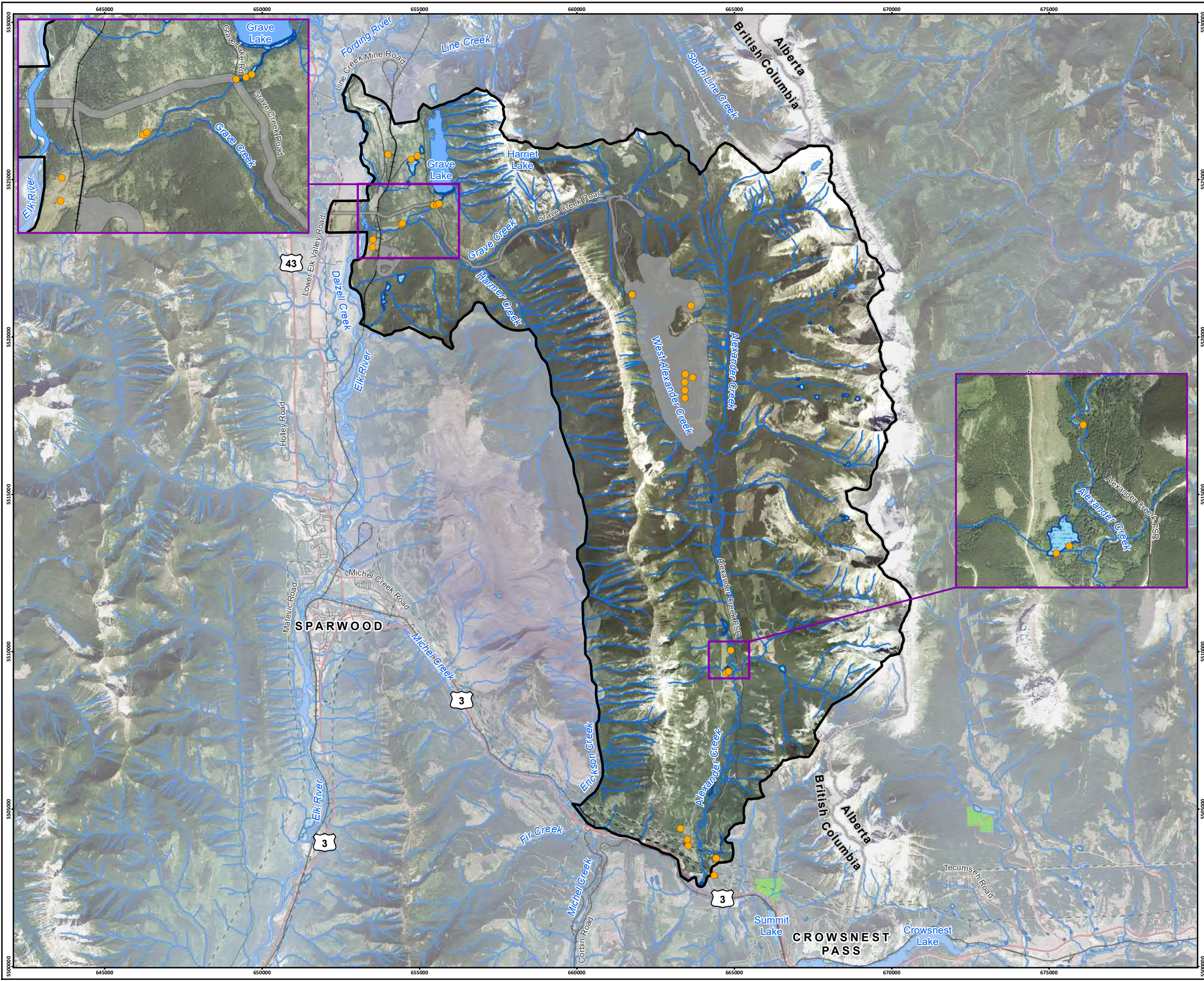
Map Drawing Information:  
Data Provided By NWP Coal Canada Ltd, Dillon Consulting Limited, Province of British Columbia  
GeoBC Open Data, Government of Alberta Open Data, Natural Resource Canada.  
Imagery Provided By Landsat 8 (Aug 2018), and GeoBC Orthoimagery (Aug 2016).

Map Created By: RB  
Map Checked By: HEB  
Map Coordinate System: NAD 1983 UTM Zone 11N



Project: 12-6231  
Status: FINAL  
Date: 2022-01-12



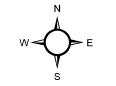
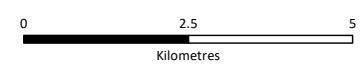


**Crown Mountain Coking Coal Project**

**Figure 15-F.2**  
Hairy Woodpecker Observations

**LEGEND**

- Hairy Woodpecker Observation
- Terrestrial Local Study Area
- Project Footprint
- Highway
- Arterial/Collector Road
- Local/Resource Road
- Railway
- Transmission Line
- Watercourse
- Waterbody
- Wetland
- Provincial Park/Protected Area
- British Columbia/Alberta Border



Scale 1:115,000

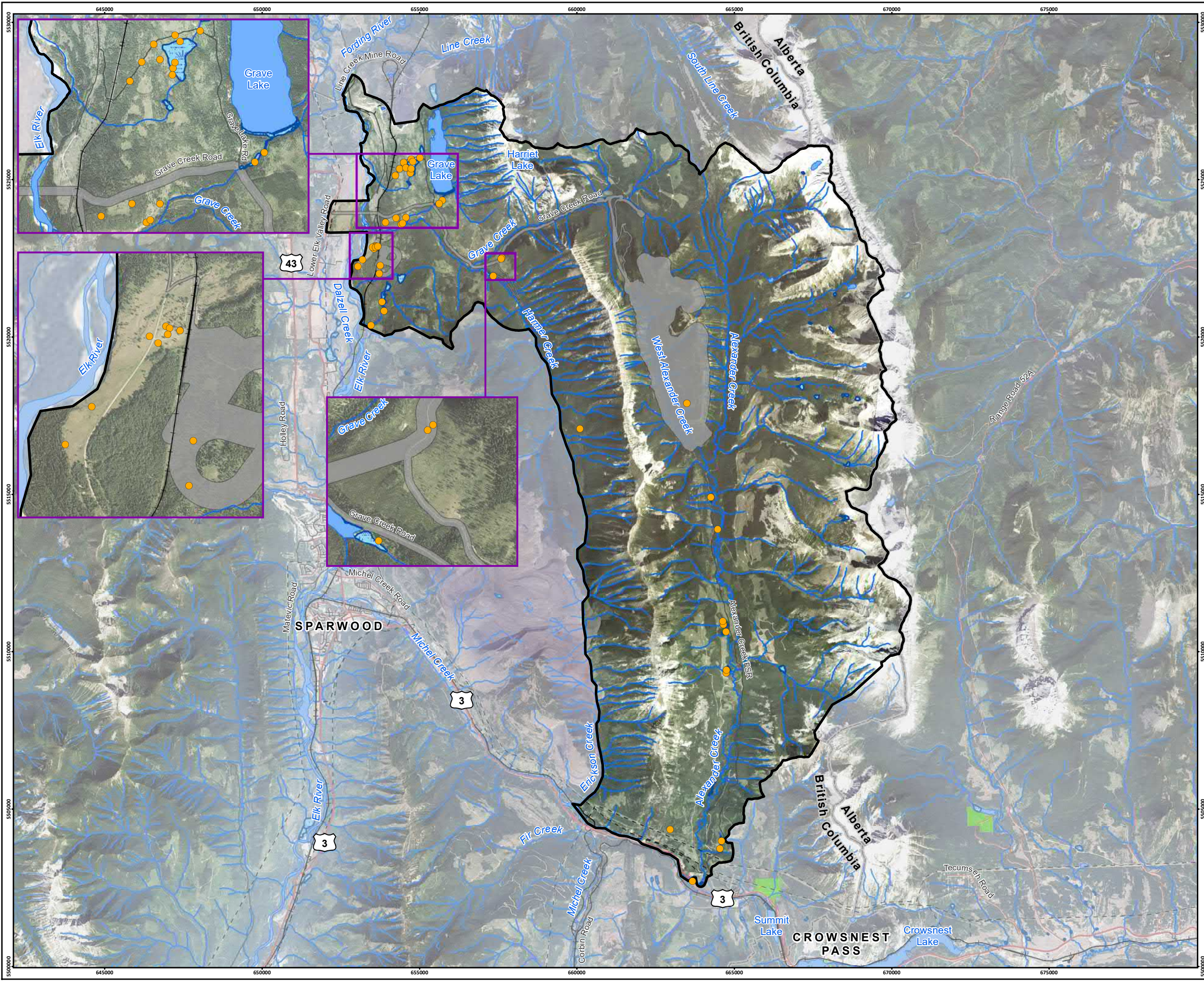
Map Drawing Information:  
Data Provided By NWP Coal Canada Ltd, Dillon Consulting Limited, Province of British Columbia  
GeoBC Open Data, Government of Alberta Open Data, Natural Resource Canada.  
Imagery Provided By Landsat 8 (Aug 2018), and GeoBC Orthoimagery (Aug 2016).

Map Created By: RB  
Map Checked By: HEB  
Map Coordinate System: NAD 1983 UTM Zone 11N



Project: 12-6231  
Status: FINAL  
Date: 2022-01-12



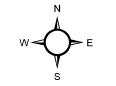
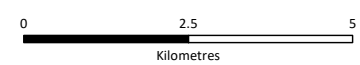


**Crown Mountain Coking Coal Project**

**Figure 15-F.3**  
Northern Flicker Observations

**LEGEND**

- Northern Flicker Observation
- Terrestrial Local Study Area
- Project Footprint
- Highway
- Arterial/Collector Road
- Local/Resource Road
- Railway
- Transmission Line
- Watercourse
- Waterbody
- Wetland
- Provincial Park/Protected Area
- British Columbia/Alberta Border



Scale 1:115,000

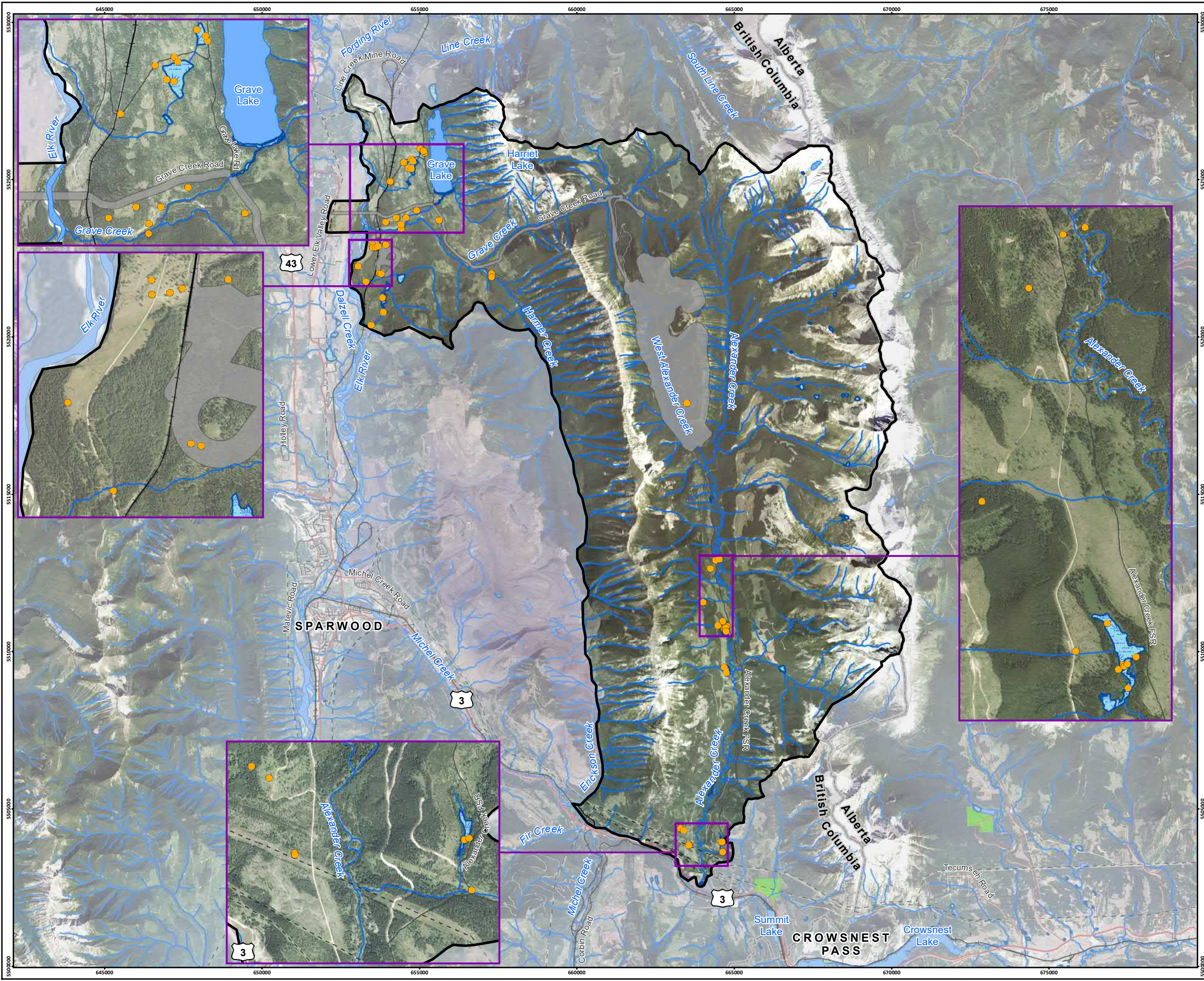
Map Drawing Information:  
Data Provided By NWP Coal Canada Ltd, Dillon Consulting Limited, Province of British Columbia  
GeoBC Open Data, Government of Alberta Open Data, Natural Resource Canada.  
Imagery Provided By Landsat 8 (Aug 2018), and GeoBC Orthoimagery (Aug 2016).

Map Created By: RB  
Map Checked By: HEB  
Map Coordinate System: NAD 1983 UTM Zone 11N



Project: 12-6231  
Status: FINAL  
Date: 2022-01-12



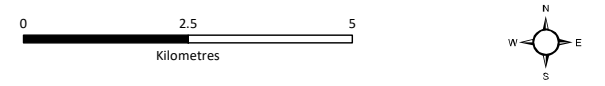


**Crown Mountain Coking Coal Project**

**Figure 15-F.4**  
Red-naped Sapsucker Observations

**LEGEND**

- Red-naped Sapsucker Observation
- Terrestrial Local Study Area
- Project Footprint
- Highway
- Arterial/Collector Road
- Local/Resource Road
- Railway
- Transmission Line
- Watercourse
- Waterbody
- Wetland
- Provincial Park/Protected Area
- British Columbia/Alberta Border



Scale 1:115,000

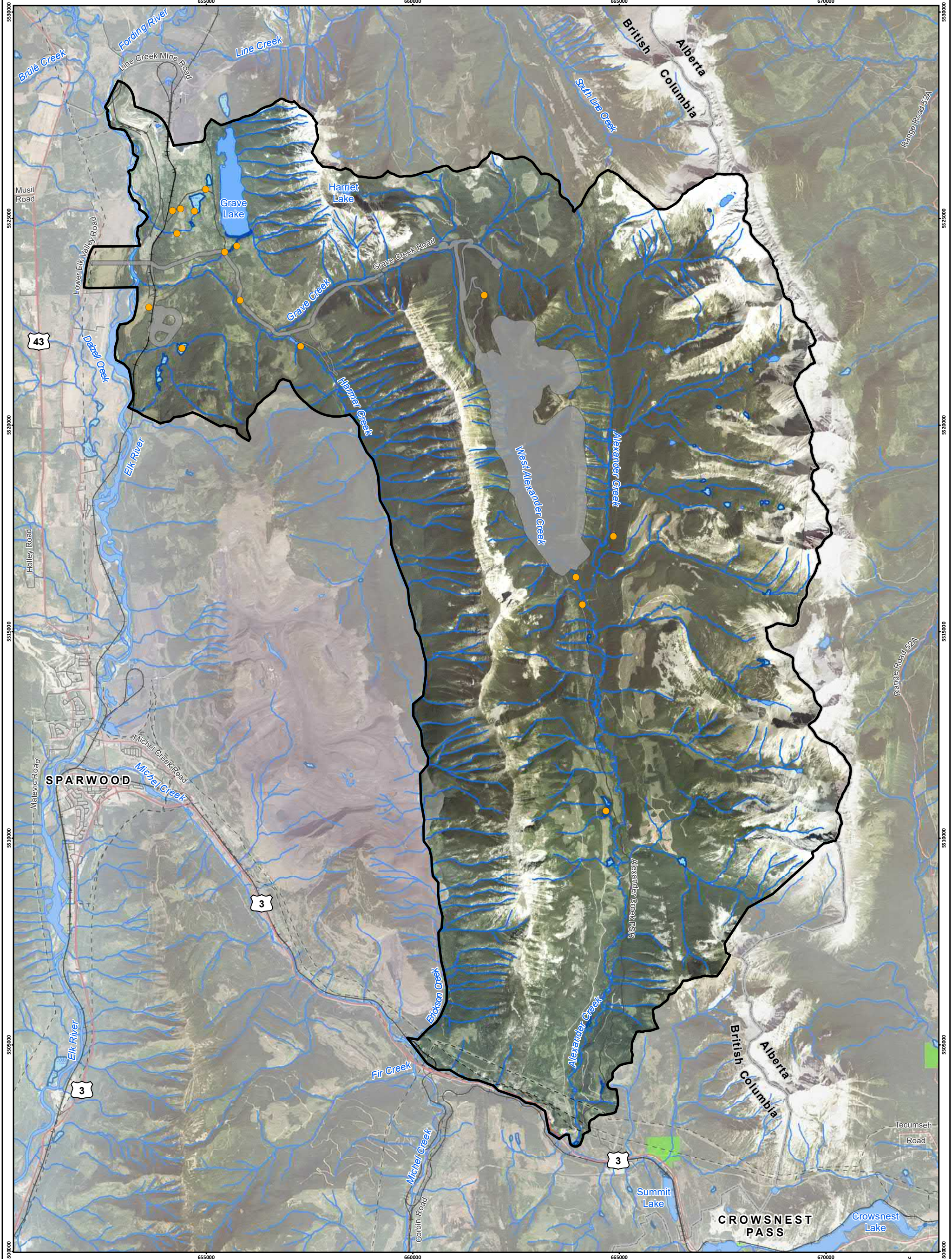
Map Drawing Information:  
Data Provided By NWP Coal Canada Ltd, Dillon Consulting Limited, Province of British Columbia  
GeoBC Open Data, Government of Alberta Open Data, Natural Resource Canada.  
Imagery Provided By Landsat 8 (Aug 2018), and GeoBC Orthoimagery (Aug 2016).

Map Created By: RB  
Map Checked By: HEB  
Map Coordinate System: NAD 1983 UTM Zone 11N



Project: 12-6231  
Status: FINAL  
Date: 2022-01-11

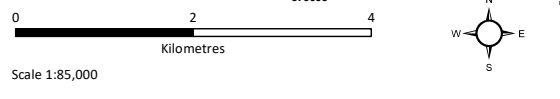




**Crown Mountain Coking Coal Project**

**LEGEND**

- Unidentified Woodpecker Observation
- Terrestrial Local Study Area
- Project Footprint
- Highway
- Arterial/Collector Road
- Local/Resource Road
- Railway
- Transmission Line
- Watercourse
- Waterbody
- Wetland
- Provincial Park/Protected Area
- British Columbia/Alberta Border



Map Drawing Information:  
 Data Provided By: NWP Coal Canada Ltd, Dillon Consulting Limited, Province of British Columbia GeBC Open Data, Government of Alberta Open Data, Natural Resource Canada. Imagery Provided By: Landsat 8 (Aug 2018), and GeoBC Ortho Imagery (Aug 2016).

Map Created By: RB  
 Map Checked By: HEB  
 Map Coordinate System: NAD 1983 UTM Zone 11N

**Figure 15-F.5**  
 Unidentified Woodpecker Observations

**NWP Coal Canada Ltd**

Project: 12-6231  
 Status: FINAL  
 Date: 2022-01-12