

# Appendix 4-J

---

Project Update Presentation - Elk  
Valley Métis – April 2021

# Crown Mountain Coking Coal Project

Project Update

April 7, 2021

*Elk Valley Metis Association*



# Agenda

1. Introductions
2. Project Overview
3. Regulatory Process
4. Summary
5. Questions / Discussion



# Introductions

- **Mike Allen** P.Eng.: General Manager, based in Vancouver
- **Dave Baines** M.Sc.: Manager Environment and Engagement, based in Elkford
- NWP's owners are Jameson Resources Limited (78%) and Bathurst Resources Canada Limited (22%)
- We are planning to permit, construct and operate  
a **better Project** and  
be a **good neighbor**



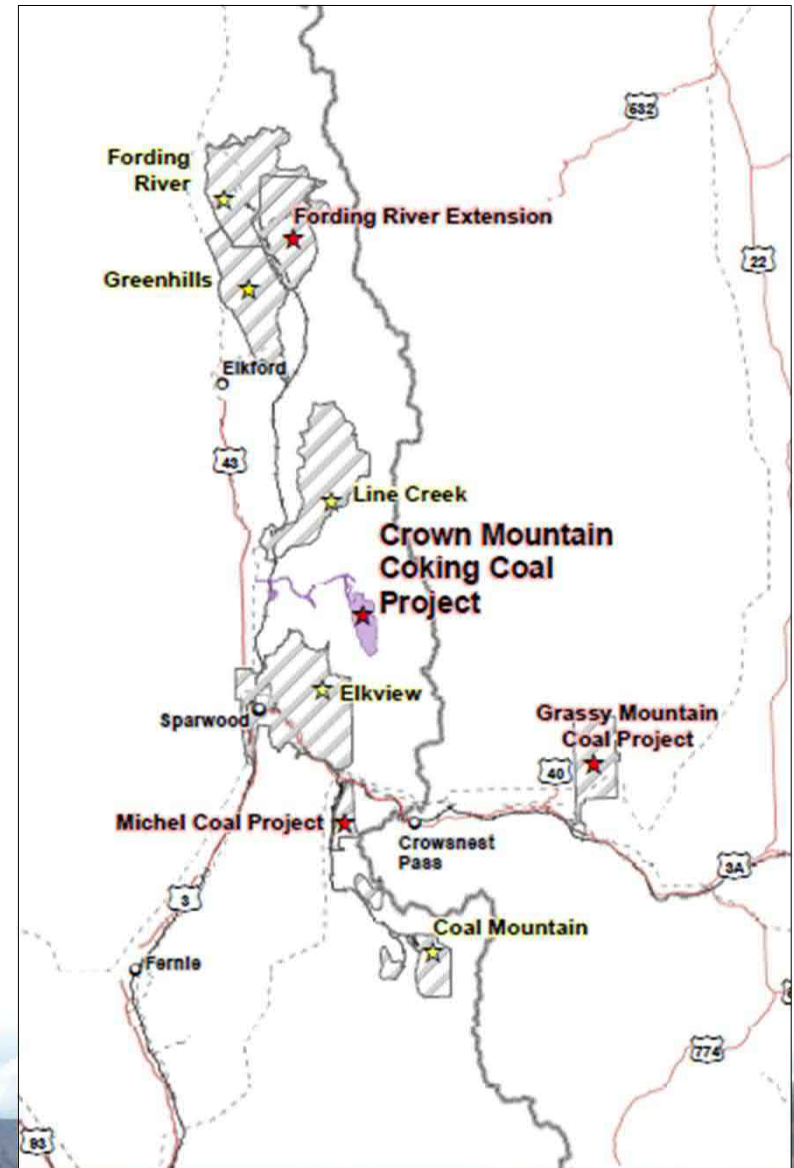
# Project Overview

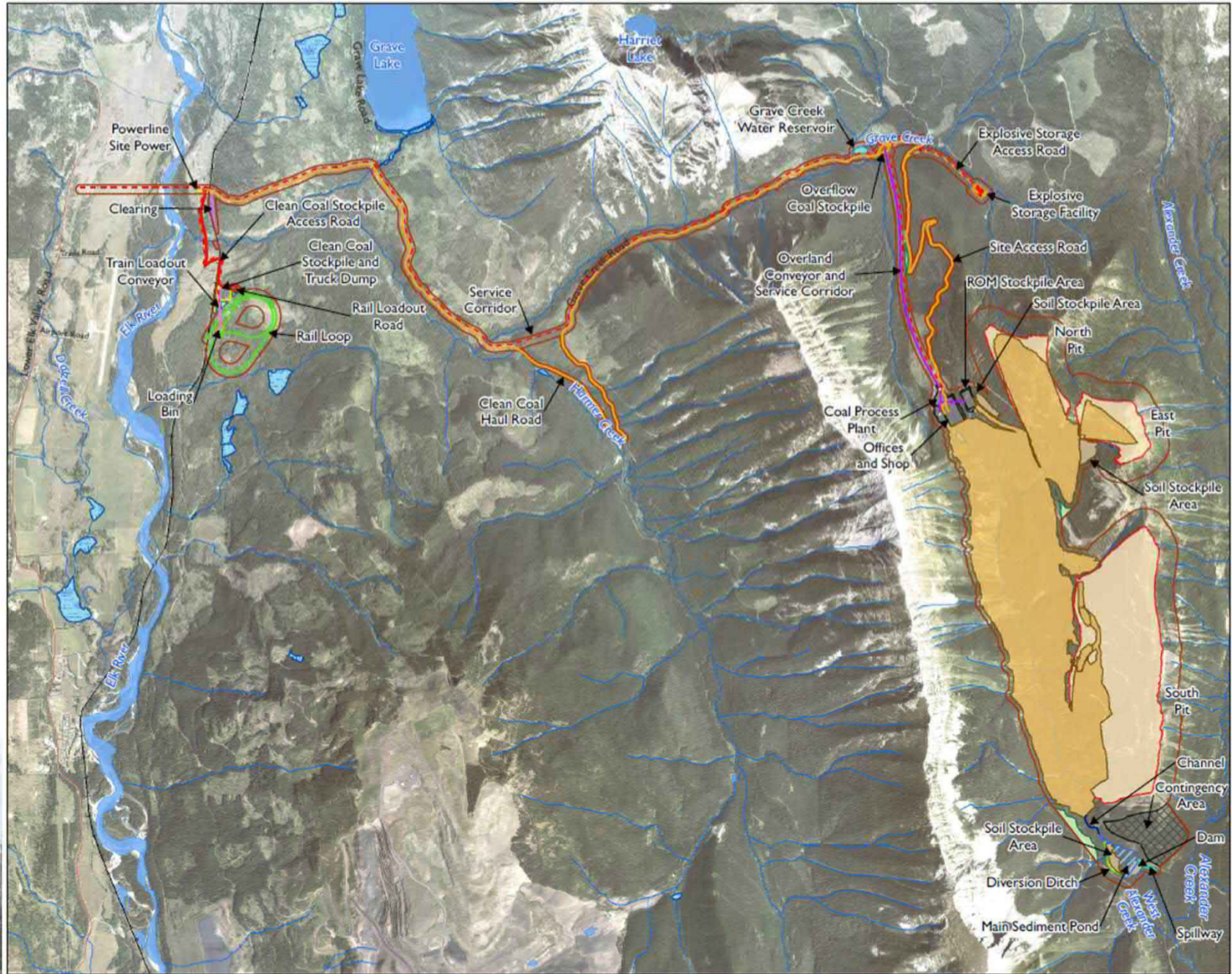
## Crown Mountain Coking Coal Project

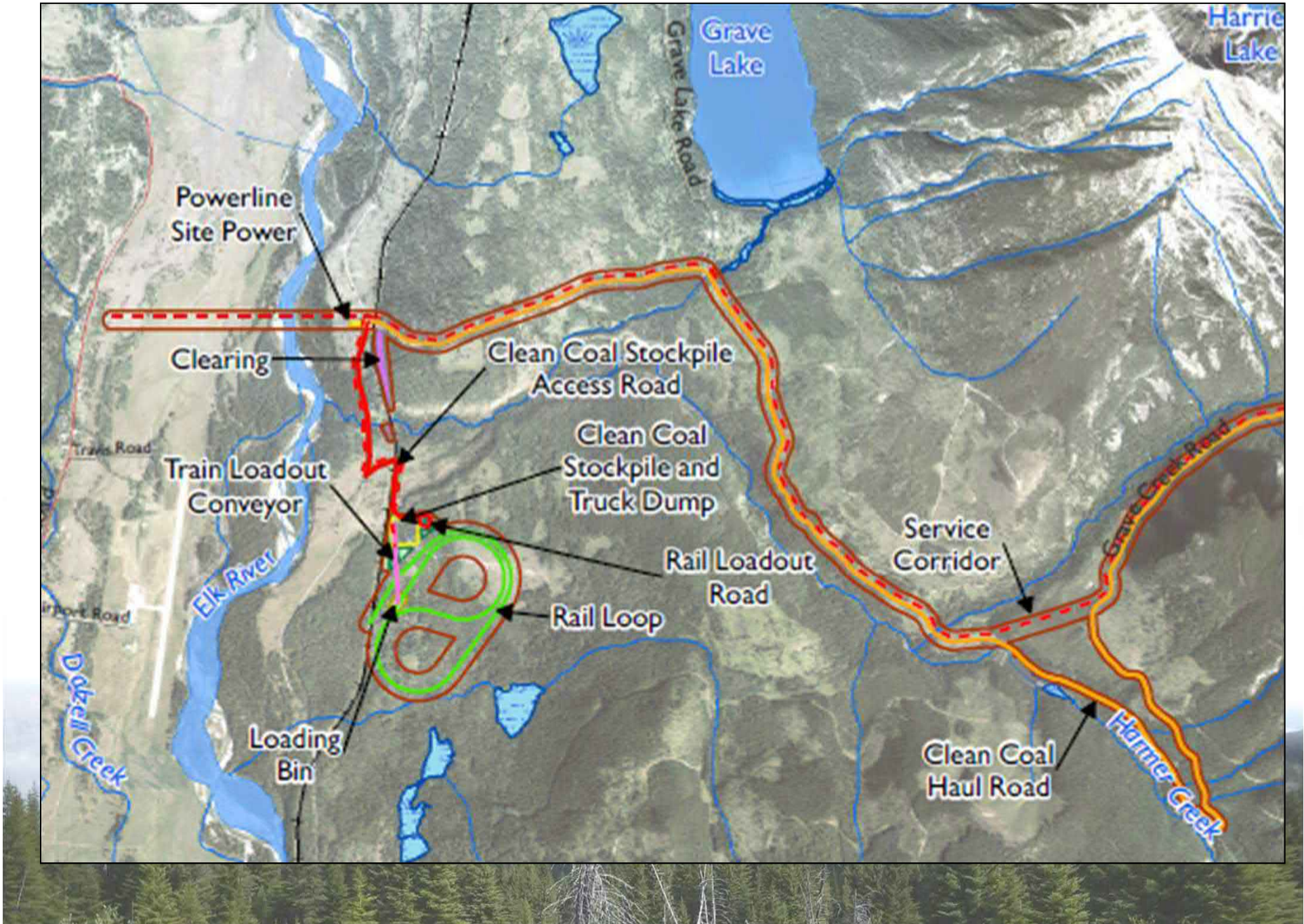


# Project Overview

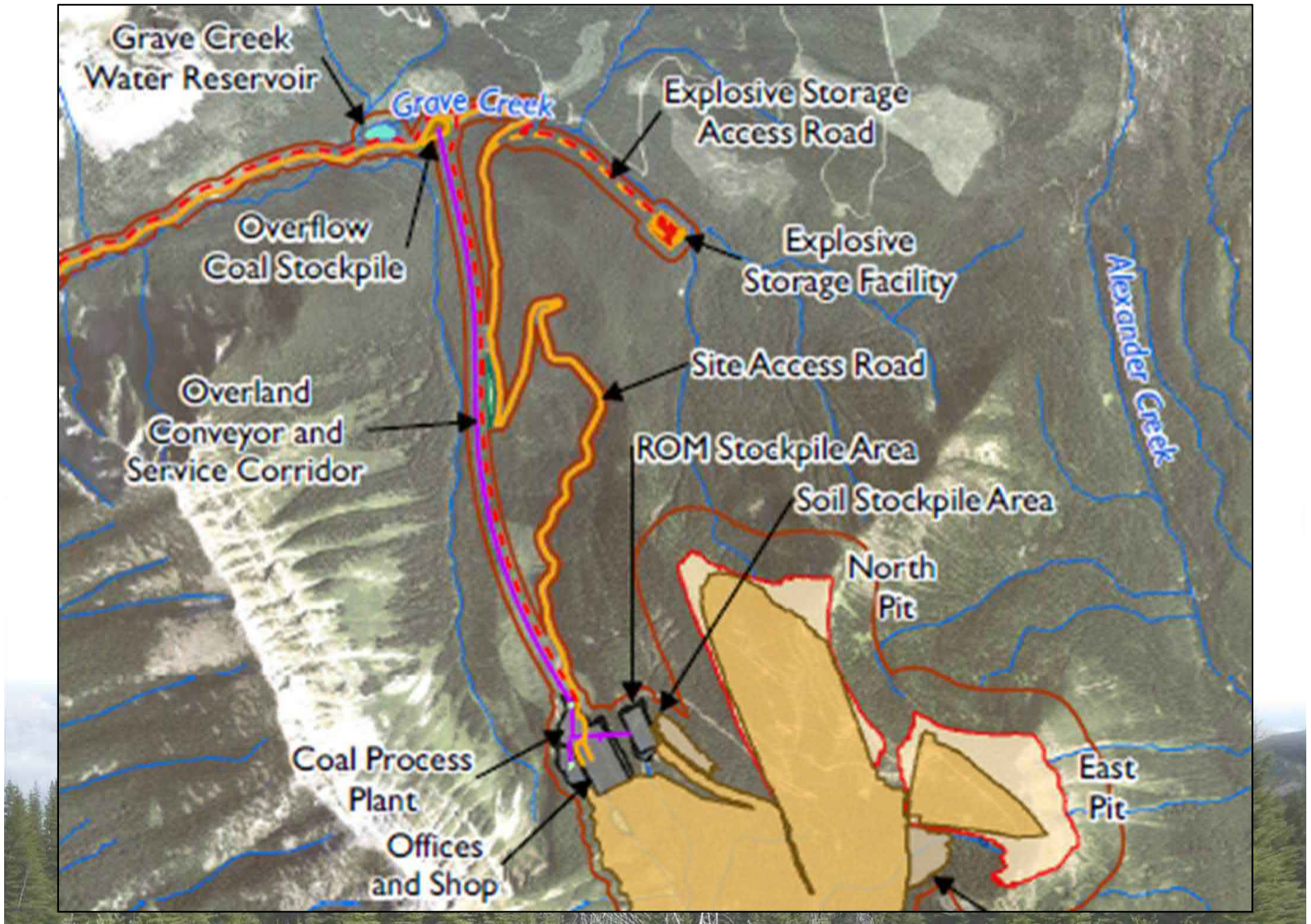
- Open pit metallurgical coal mine located near Sparwood BC
  - Between Teck's Elkview and Line Creek Mines
- Up to 2.0 million tons clean coal per annum for 15 years
- Planned schedule:
  - Start of construction late 2022
  - Start of production early 2024
  - Start of closure 2038

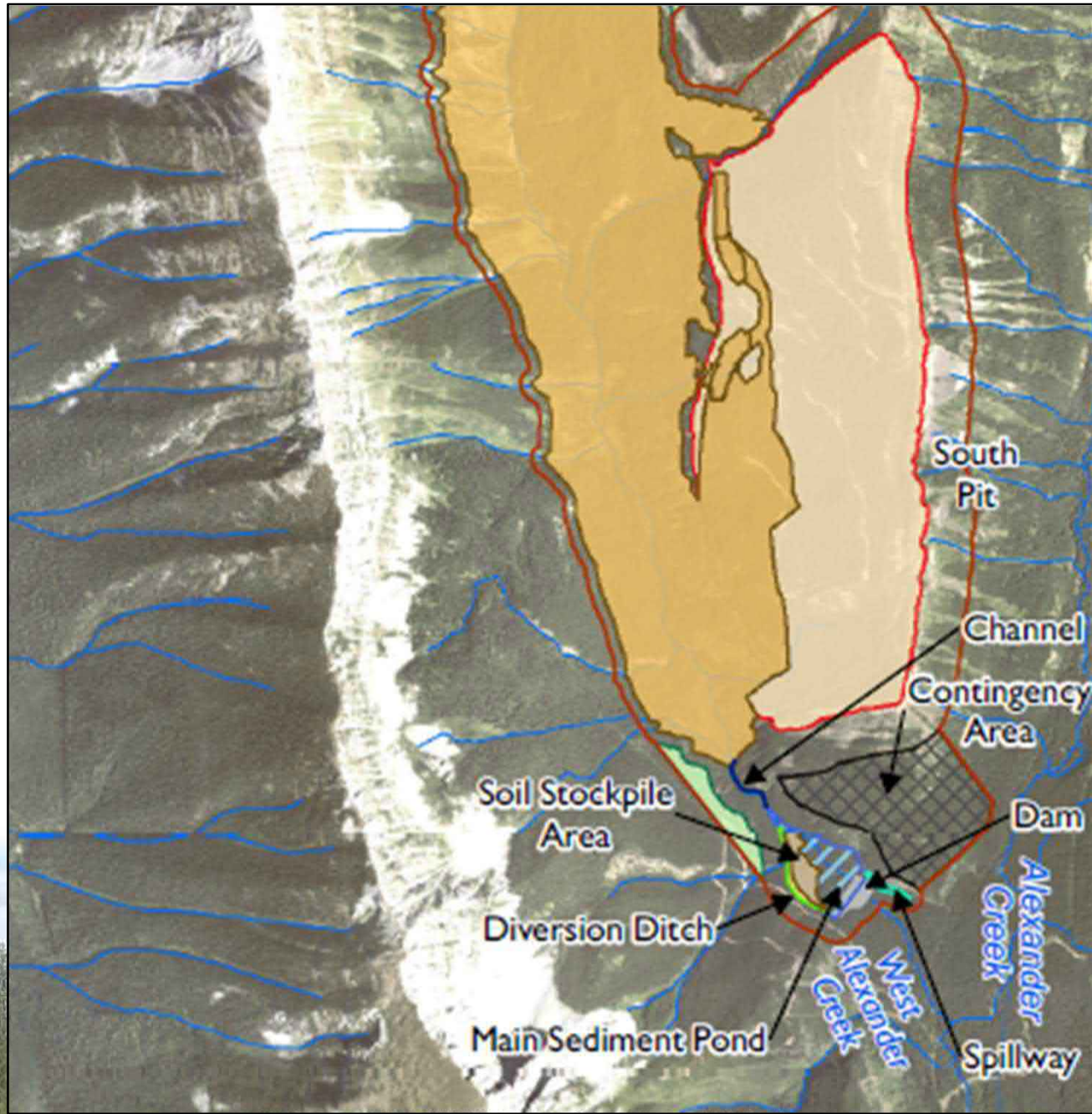












# Project Socio-Economics

- \$412M Initial Capital Cost
  - Mine Infrastructure \$100M
  - Plant and Coal Handling Facilities \$136M
  - Mobile Mining Equipment \$123M
  - Pre-Strip and Project Management \$53M
- Peak construction workforce of 500
- Operations workforce of 330



# Regulatory Overview

## Crown Mountain Coking Coal Project



# Regulatory Process

- Project started regulatory process in 2014
- Automatically triggered environmental assessments under:
  - Environmental Assessment Act 2002
  - Canadian Environmental Assessment Act 2012
- Additional engagement requirements added in 2020
- On Track to submit, first half of 2021



# Baseline Studies

- Environmental assessment studies mostly complete including:
  - Archeology Assessment
  - Fish and fish habitat
  - Terrestrial Ecosystem Mapping
  - Wildlife (furbearers, ungulates, birds, bats, amphibians)
  - Soil and terrain mapping, and chemistry
  - Aquatic health
  - Vegetation baseline
  - Wetland ecosystem assessment
  - Hydrology
  - Meteorology
  - Noise
  - Air quality (dust fall)
  - Socio - economics

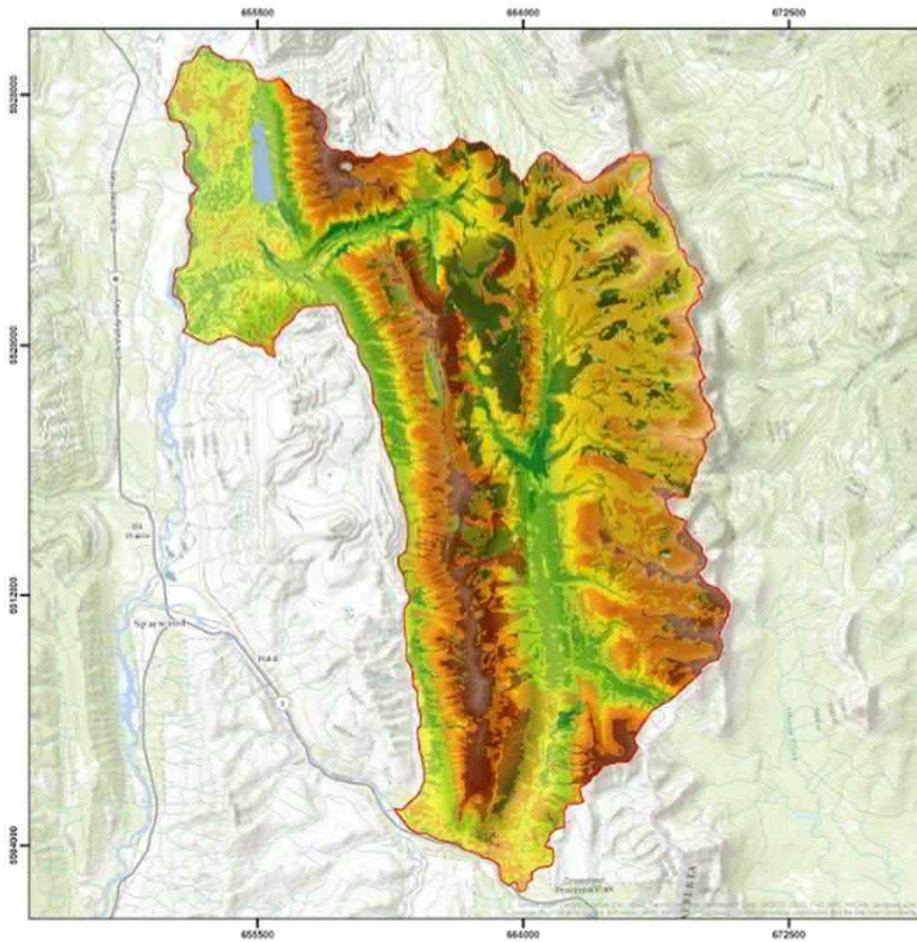


# Assessment Steps

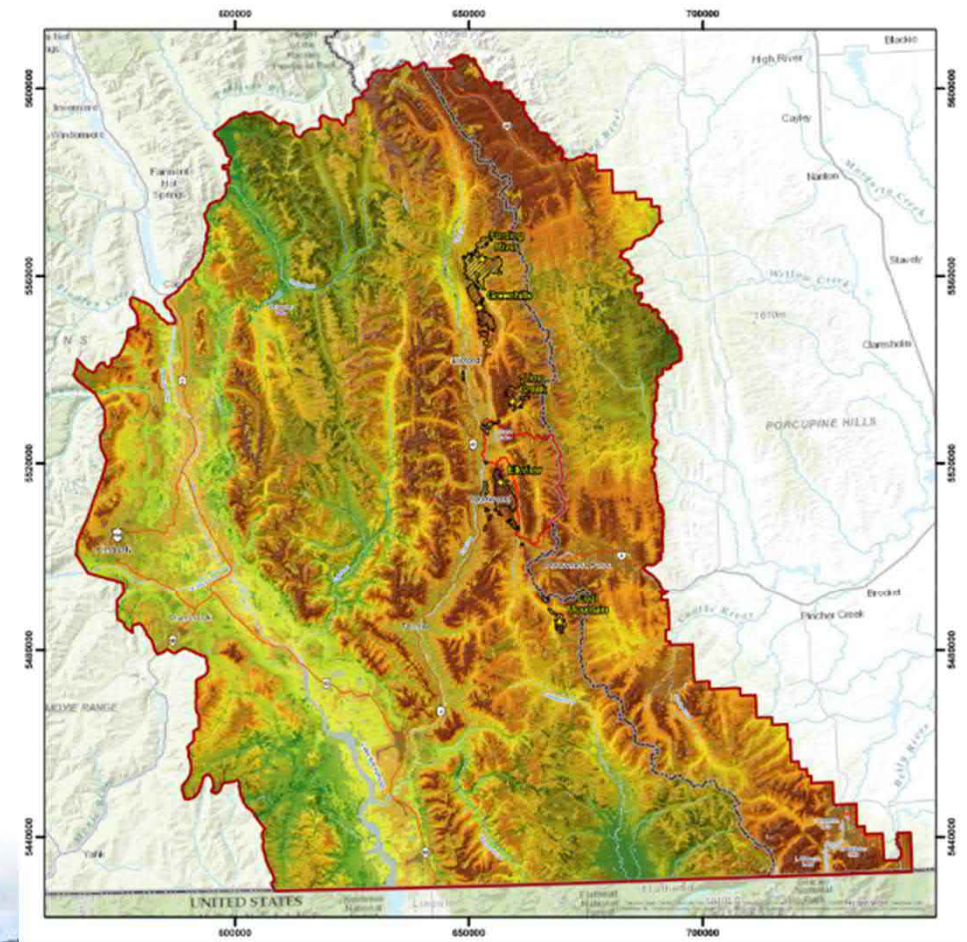
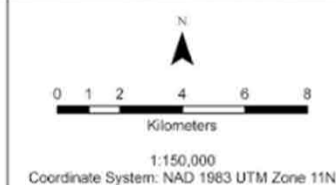
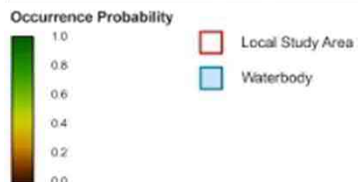
- Assessments in process to understand potential impacts and relevant mitigation
- Assessment being completed for all value components
- Some assessments based on better approach than 'typical' e.g. wildlife modelling based on occurrence



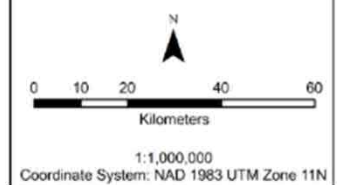
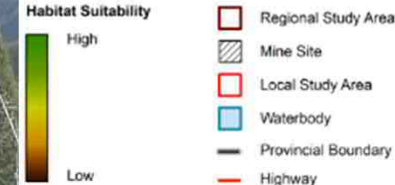
# Example: Wildlife Modelling



**Moose Fall/Winter Occurrence Probability**



**Moose Fall/Winter Habitat Suitability**





# Mitigation Planning

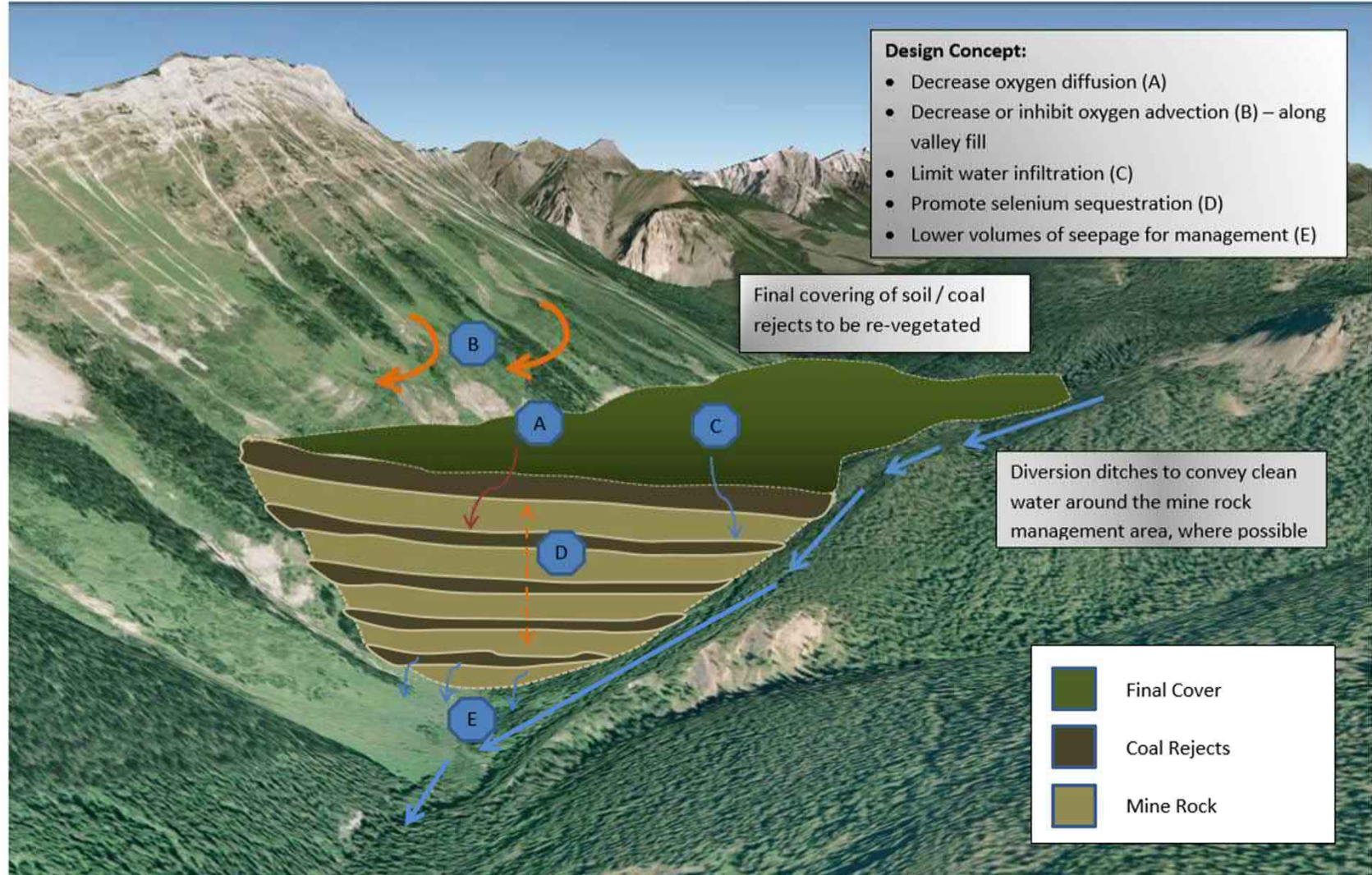
Examples of mitigation planning for a better Project include:

- Selenium management
  - As much pit back fill as practicable
  - All other mine rock storage constructed for Selenium source control
- Tailings management
  - All tailings (coarse and fine material) dried and blended with the mine rock for Selenium management
  - No tailings pond
- Reduced footprint
  - Using highway style trucks to reduce the size and impacts of the clean coal haul road
  - Locating the coal processing plant near the open pits



# Example: Selenium Management

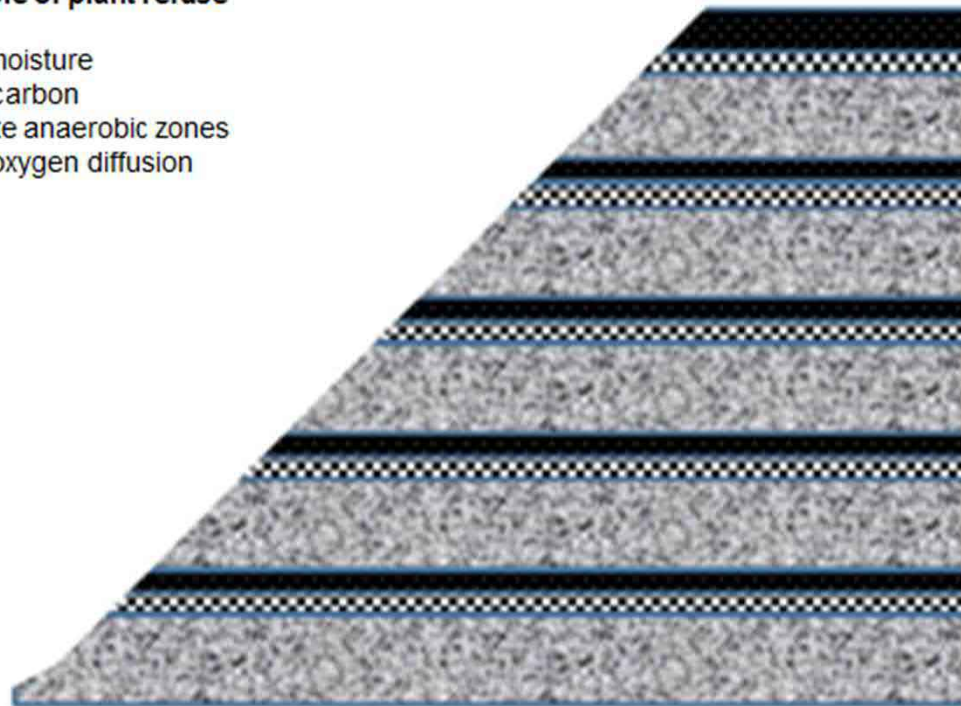
## Waste Rock Management: Layered Approach



# Example: Selenium Management

**Expected role of plant refuse layers:**

- Retain moisture
- Supply carbon
- Generate anaerobic zones
- Retard oxygen diffusion

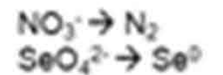


Plant refuse  
Breaker Reject  
Waste rock  
Plant refuse  
Breaker reject  
Waste rock  
Plant refuse  
Breaker reject  
Waste rock  
Plant refuse  
Breaker reject  
Waste rock  
Plant refuse  
Breaker reject  
Waste Rock

**Reductive Processes**

O<sub>2</sub>  
decreasing

When  
DO < 0.5  
mg/L:



# Regulatory Milestones

ACTIVITY	Year -3				Year -2				Year -1				Year 1			
	2021				2022				2023				2024			
	Q1	Q2	Q3	Q4	Q1	Q2	Q3	Q4	Q1	Q2	Q3	Q4	Q1	Q2	Q3	Q4
EA Development and Engagement	█															
Submit EA		★														
EA Review and Engagement		█	█	█	█	█	█	█								
EA Certificate Received							★									
Permit Application Development				█	█	█										
Permit Review and Engagement							█	█								
Permits Received							★									
Owner Approval (Sanction)							█	█								
Site preparation and construction							█	█	█	█	█	█				
Plant Commissioning & Early Production													★			
Commercial Production / Operations														█	█	█



# Summary

- Environmental studies essentially complete – assessment in progress along with mitigation planning
- Planning to submit Environmental Assessment to BC EAO and IAAC in the first half of 2021
- Local team expanding – Dave Baines has joined as Manager, Environment and Engagement
- Planning a **better Project** and  
being a **good neighbour**



# Questions and Discussion

For more information:

+1 (604) 629-8605 [info@nwpc coal.com](mailto:info@nwpc coal.com) [www.nwpc coal.com](http://www.nwpc coal.com)

