

Appendix 4-S

Representative News Articles
regarding the Crown Mountain
Project



NWP Coal is the company pushing the Crown Mountain project. (Photo courtesy of NWP Coal)

Crown Mountain project inches forward

Another coal mine for the Elk Valley is in the works

Oct. 18, 2020 12:00 a.m. / [NEWS](#)

Sparwood is getting closer to having another coal mining operation on its doorstep, with the district council receiving an update on the Crown Mountain coking coal project from the proponent of the project, NWP Coal.

According to the general manager of NWP Coal, Mike Allen, the company has been moving forward with its studies and project plans for the project to submit to both provincial and federal authorities for assessment.

Allen said that due to delays brought about by the pandemic, NWP Coal would be ready to submit its applications for provincial and federal assessment in the first quarter of 2021.

Crown Mountain, which sits to the northeast of Teck's Elkview operations is envisaged as a 3.7 million tonne per-year coal mine with an operations lifespan of 15 years.

Coal mined at Crown Mountain would be hauled from the site to the rail line to the West.

The company pushing forward with the project, NWP Coal, is owned by two companies based in Australia and New Zealand – Jameson Resources and Bathurst Resources.

Bathurst is the largest coal mining company in New Zealand, where it produces three million tonnes per year.

By comparison, Teck's combined operations in the Elk Valley produced 25.7 million tonnes of coking coal in 2019.

In his presentation to Sparwood councillors, Allen said that the company had a way to manage selenium runoff that it believed would adequately mitigate the issue, where waste rock was sandwiched between layers of rejected coarse coal to create an oxygen barrier.

Allen said the process was similar, and as effective as Teck's saturated rock-fill water treatment facilities in the valley, which use a biological process to reduce selenium levels.

“As the oxygen is consumed, the bacteria reduces the selenium to a level that it in line with an active water treatment plant,” said Allen, who added that the technology had been developed independently of what Teck was doing with their selenium management program.

‘We have gone by ourselves on this ... relative to the size of the company, we have invested a significant amount of money in coming up with this and testing it.’

The Crown Mountain coking coal project would generate 500 construction jobs over a 19-month estimated construction time, with 330 full-time positions to be available at a fully operational mine if approved as it currently stands.

The company timeline for the project estimates that if all approvals go to plan and stay on schedule, construction should be able to begin in the third quarter of 2022 at the earliest.

[READ MORE: Sparwood council defers endorsing Teck dust management plan](#)

Is there more to this story?

scott.tibballs@thefreepress.ca [Like us on Facebook](#) and [follow us on Twitter](#)

FERNIE FREE PRESS



Resources & Agriculture

Down Under firms dig for B.C. coal opportunities

Australian juniors developing new met coal mines in the province despite global glut

By Nelson Bennett | November 25, 2014



Australian junior mining companies are betting that long-term demand for coal used in steelmaking will make their investment in B.C. projects pay off | kilukilu/Shutterstock

Despite a global glut of metallurgical or “met” coal that has shuttered mines in B.C., Australian junior mining and exploration companies have been moving into the province with plans for new mines – underscoring the view of industry analysts that the long-term demand for steelmaking coal is strong, particularly for B.C.’s high-grade coal.

Jameson Resources Ltd. (ASX:JAL) is among the handful of Australian junior miners that have recently been buying up claims in B.C.'s coal-rich Peace River and Crowsnest regions.

The company recently applied through the B.C. Environmental Assessment Office for a new open-pit mine 13 kilometres northeast of Sparwood, not far from Teck Resources

[READ MORE 532 WORDS](#)



FLATHEAD WILD



[Home](#) » [News](#) » [Alexander Creek, Crown Mountain Coal and Racehorse Pass Quarry](#)

Alexander Creek, Crown Mountain Coal and Racehorse Pass Quarry

by Ryland Nelson

170.80sc

on March 30, 2015

Recently I traveled up Alexander Creek to check out the proposed “Crown Mountain Coking Coal Project” between Grave Lake and Racehorse Pass. Tucked up between and behind Elkview and Line Creek mines, and adjacent to two recently acquired private conservation lands, is a low ridge surrounded by jagged rocky mountain peaks and the Continental Divide / BC Alberta Border.

Here Jameson Resources / NWP Coal are proposing a large open pit coal mine.



This ridge would be removed by the proposed Crown Mountain Coking Coal Project

Numerous studies have shown that Alexander Creek is one of the last best north-south wildlife corridors in BC's Southern Rockies, and is important to wildlife connectivity on a continental scale. It also conveniently connects to many critical east-west corridors crossing over into Alberta. It's lower reaches along Highway 3 were recently purchased as conservation lands by Teck because of their importance to continental wildlife connectivity.



Lower Alexander Creek on recently acquired Private Conservation Lands.

While this valley has seen forestry activity and some mineral exploration, it is otherwise untouched. Because the waters are free of mine contaminants like selenium, cadmium and nitrates, it could be a prime candidate for enhanced selenium free trout habitat in the future. Much of this area is already within an Access Management Area (AMA) that restricts motorized vehicle use to protect the high wildlife values.



The view from Racehorse Pass

In a landscape that is already heavily stressed and fractured by resource extraction activities, this is no place for a new mine.

Continuing up into Racehorse Pass towards Alberta, we find some amazing untouched Rocky Mountain wilderness—low passes surrounded by huge peaks straddling the continental divide.



Racehorse Pass. Alberta on the left, BC on the right. Future Limestone Quarry?

After further research, I found out that there is a proposal for a limestone quarry on the BC side of Racehorse Pass Originally proposed to be accessed via a road from Alberta. This was turned down by the local governments in Alberta. The company is now proposing to access this quarry via an access road up Alexander Creek, with 5 trucks an hour running 12 hours a day.

[Take Action: Send a message to the official public comment period on this proposal. Say NO to this quarry and YES to a WMA!](#)

There is also another quarry proposed just south of Alexander Creek near Highway 3.



BBQ on the border. Crowsnest Mountain in the background. This is directly on the site of the proposed quarry.

Do you like this post?

Like 38 people like this.

Tweet

g+1



Be the first to comment



Sign in with

 Facebook

 Twitter

Or sign in with email

Email Address

Password


Remember me





POST YOUR COMMENT

or [Create an account](#)



 Sign in with Facebook

 Sign in with Twitter

 Sign in with Email

Email address

JOIN

DONATE

VOLUNTEER

TAKE ACTION

Powered by people like you



The Flathead Wild Campaign is supported by [The Canadian Parks & Wilderness Society](#), [Headwaters Montana](#), [National Parks Conservation Association](#), [Sierra Club BC](#), [Wildsight](#), and [Yellowstone to Yukon Conservation Initiative](#)

Sign in with [Facebook](#), [Twitter](#) or [email](#). Created with [NationBuilder](#)

Follow [@flatheadwild](#)

Like



FLATHEAD WILD



[Home](#) » [News](#) » [Chaos in the Elk Valley](#)

Chaos in the Elk Valley

by Ryland Nelson

170.80sc

on March 24, 2015

Shortly following the approval of the Elk Valley Water Quality Plan (EVWQP) by the BC government, several new mine proposals and mine expansions have reared their heads in the Elk Valley. It remains unclear how the objectives of reduced water contaminants in the Elk River can be reached in the presence of new mines.

The EVWQP was drafted by Teck and only takes into consideration Teck's mining plans. It doesn't allow for any additional contaminants from other non-Teck mines.

This means that any new mine would have to have absolutely zero impact on water quality. Can this be achieved?

[Sign the petition for a more balanced land use plan.](#)

The proposition of new mines in the already stressed Elk Valley raises many questions. How can a mine promise that they would have zero impact on water quality? What would the impacts be to wildlife habitat and corridors? recreational

and hunting access? cumulative effects? socioeconomic impacts to our communities?

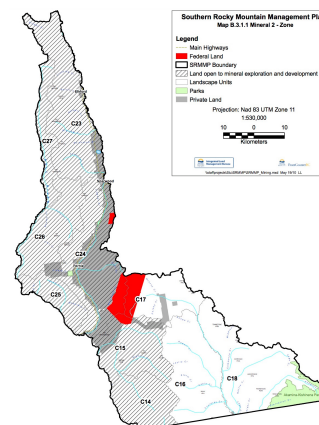
And to top it all off, two rock quarries have also been proposed in the Alexander Creek drainage and a new forestry company plans to increase the cut rate on their recently acquired private forest lands by up to 800%.

How can this much industrial resource extraction be entertained in one watershed?

The answer is the grossly unbalanced Southern Rocky Mountain Management plan (SRMMP) that guides land use in this region. It not only says that all of the land in BC's Southern Rockies is open to mineral exploration, it further states that mining is valued more than anything else.

Objective 3.1.1

All lands in the plan area displayed as "land open to mining" in Map B.3.1.1 are available for mineral exploration and development, subject to existing legislation.



Objective 3.1.2

Management intent and objectives for other resource values in the SRMMP (including, but not limited to, old-growth, connectivity, ungulate winter range, riparian, visual landscapes and recreation) will not preclude application for, or approval of, mining activities anywhere in the lands referred to in Objective 3.1.1

To summarize the proposals and expansions:

Active New Mine Proposals

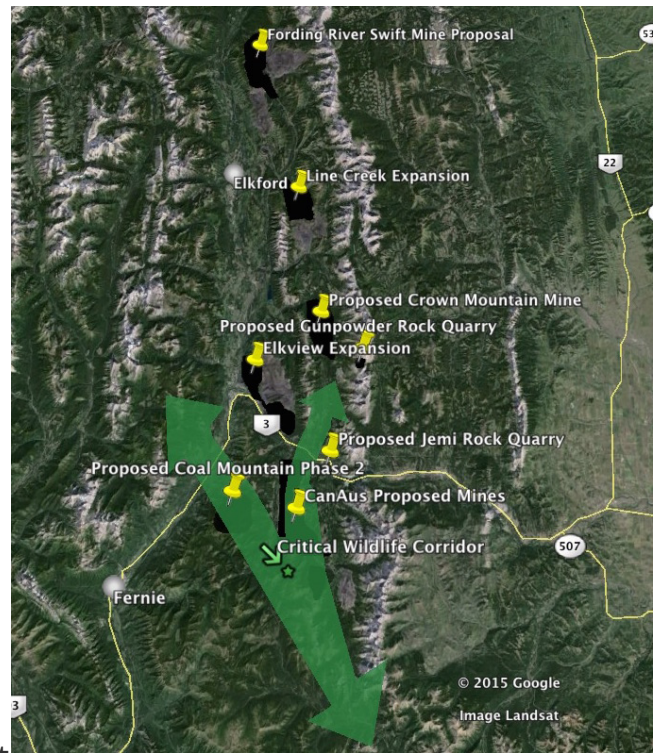
Coal Mountain Phase 2—a new mine southeast of Hosmer in the Maarten Wheeler Ridge Area

The Loop Ridge proposal by CanAus in Michel Creek near Highway 3 and the Corbin Road

Crown Mountain proposal in upper Alexander Creek.

Planned Mine Expansions

There are four planned mine expansions at existing Teck operations: Fording River, Line Creek, Greenhills and Elkview



Upcoming Mine Proposals/Exploration Projects

Centermount/Bingay North of Elkford

Crowsnest Pass Coal Mining/ Coal Creek

CanAus/ Tent Mountain / Michel Head

Click the photo on the right for a larger view.

With an additional two new rock quarries in the Elk Valley and one in the Flathead River Valley.

It's not difficult to see that this land use plan is highly unbalanced.

[Sign the petition for a more balanced land use plan.](#)

Do you like this post?

Like 164 people like this.

Tweet

g+1



Be the first to comment



Sign in with

 Facebook

 Twitter

Or sign in with email

Email Address

Password


Remember me





POST YOUR COMMENT

or [Create an account](#)



 Sign in with Facebook

 Sign in with Twitter

 Sign in with Email

Email address

JOIN

DONATE

VOLUNTEER

TAKE ACTION

Powered by people like you



The Flathead Wild Campaign is supported by [The Canadian Parks & Wilderness Society](#), [Headwaters Montana](#), [National Parks Conservation Association](#), [Sierra Club BC](#), [Wildsight](#), and [Yellowstone to Yukon Conservation Initiative](#)

Sign in with [Facebook](#), [Twitter](#) or [email](#). Created with [NationBuilder](#)

Follow [@flatheadwild](#)

Like



Home / Kootenay BizBlog / Australian mining company seeks environmental

Australian mining company seeks environmental permit to start Crown Mountain Coal Mine in Elk Valley

by **Keith Powell** — January 07, 2015



Jameson Resources has conducted extensive exploratory drilling on the Crown Mountain site.

— *Photo courtesy Jameson Resources*

Jameson Resources, an Australian junior mining company, received a Section 10 Order from the British Columbia Environmental Assessment Office (EAO) in November as a result of the Project Description they submitted in October.

This Order confirms that the Crown Mountain Project is reviewable under BC legislation and marks the formal beginning of the provincial environmental assessment (EA) process.

Jameson remains committed to fast-tracking the environmental permitting process for Crown Mountain. This acceptance of the Project into the Pre-Application Phase of the EA process is a key milestone.

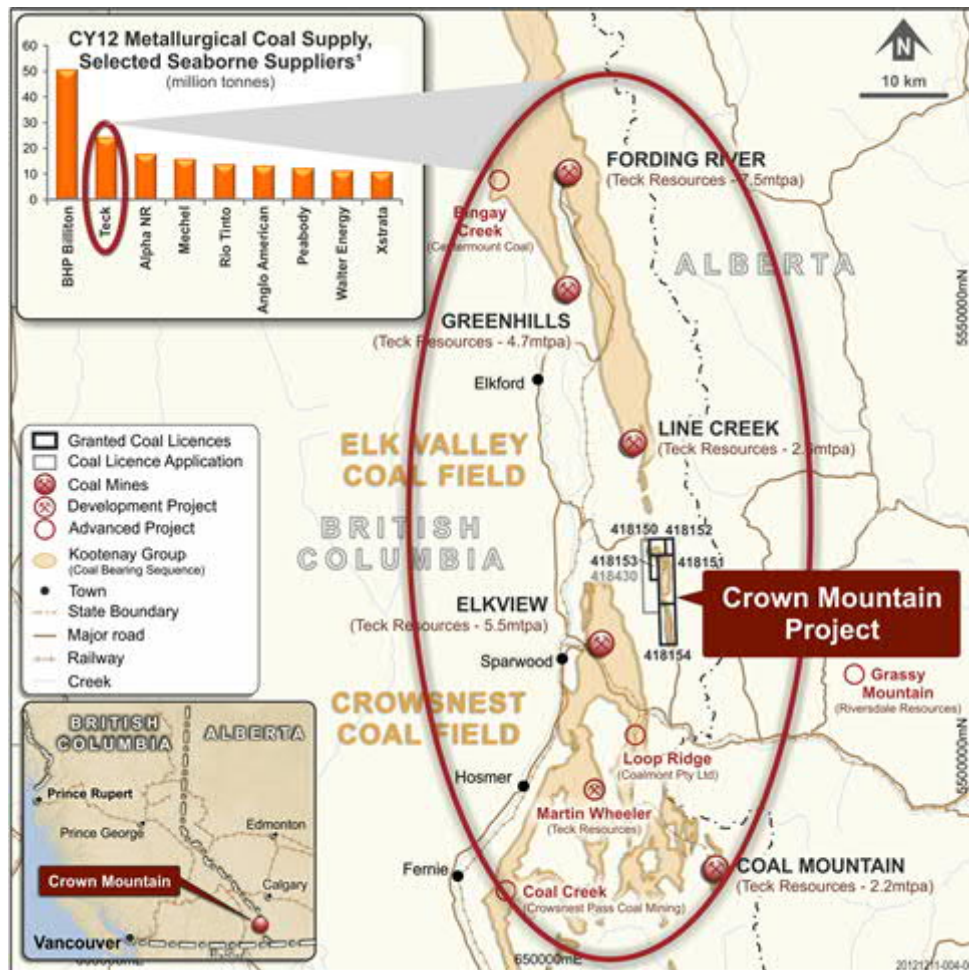


Photo courtesy Jameson

Resources

Jameson's Crown Mountain Project is located 13 km northeast of Teck's existing Fording River and Coal Mountain metallurgical coal mines.

Capital expenditure to get the mine up and running is estimated to be in neighbourhood of \$123 to \$339 million and the company projects the mine

would produce an estimated 3.7 million tonnes of coal per year over a period of 16 years. Peak employment at the Crown Mountain mine is projected at 266 people, with some 200 involved in the construction phase.

Press reports state that the Australian junior would like to see coal production start at Crown Mountain by 2017.

EVENTS

[Welcome to the 13th annual Columbia Basin Culture Tour August 7 & 8, 2021 Columbia Basin Region](#)

[View All Events](#)



Crown Mountain to submit environmental assessment in Spring 2021

The coal project is between Elkview and Line Creek

SCOTT TIBBALLS / Feb. 3, 2021 1:30 p.m. / LOCAL NEWS / NEWS

NWP Coal, the company behind the proposed Crown Mountain open-cut coal mine in the Elk Valley has reported it is preparing to submit environmental assessment documents to provincial and federal authorities in the near future.

Crown Mountain is located almost immediately northeast of Teck's existing Elkview operations, and to the south of the Line Creek operations.

It is over Erickson Ridge heading towards Alberta, east of Sparwood.

In a presentation to the City of Fernie committee of the whole, NWP Coal representatives said they were wrapping up the documentation for the project's environmental assessment and would have them filed "early in 2021."

The project has been in the regulatory processes since 2014.

The mine as envisaged has a footprint of 1,300 hectares, and would take 1.5 years to construct.

According to the company, the Crown Mountain project, if permitted, would produce up to 4 million run-of-mine tonnes per year for a 15-year mine life.

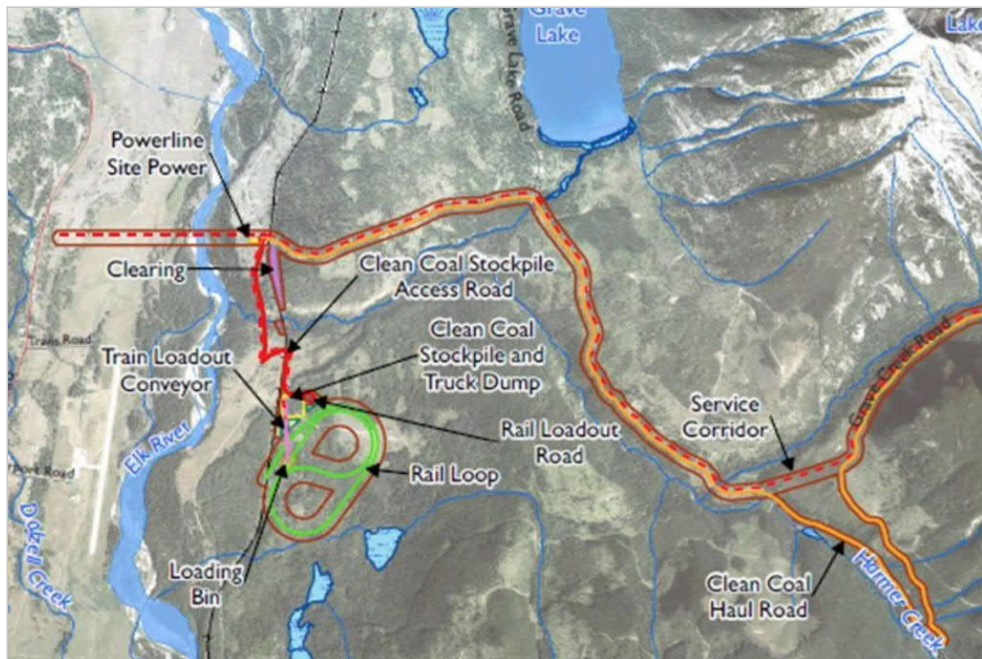
The project would create 500 construction jobs over a 19-month period, and 330 full-time positions when complete.

READ MORE: [Crown Mountain project inches forward](#)

scott.tibballs@thefreepress.ca

Like us on [Facebook](#) and follow us on [Twitter](#)

COAL MINE



The plans for part of NWP's transport designs to get coal from the Crown Mountain project to market. Pictured: Grave Creek Rd which will be widened, and a rail load-out near the Elk River. (Image courtesy of NWP Coal)

Crown Mountain coal project on track for 2023 construction

The company had hoped to have submitted environmental assessment documentation by now, but has been delayed

[SCOTT TIBBALLS](#) / Jun. 10, 2021 9:00 a.m. / [LOCAL NEWS](#) / [NEWS](#)

The Crown Mountain coal project near Sparwood has seen some delays in the Environmental Assessment (EA) step in it's journey to approval, but remains on track to begin construction in late 2022 according to the project owner, NWP Coal.

In a presentation to District of Sparwood councillors, general manager of Vancouver-based NWP Coal, Dave Baines said that they had originally hoped to have submitted EA documents to the provincial and federal governments by now,

but due to delays in working through engagement with interest groups, they were looking at a Q3 timeline for submission.

The project, if it successfully clears regulatory hurdles and proceeds to construction and operation would have a peak construction workforce of 500, and an operational workforce of 350.

Baines said that “we’ve heard that housing is an issue in the Elk Valley, and as we bring in more workforce it is something we need to address.”

Other engagement items the company was working through with interest groups were backcountry access, wildlife, water, fish health, conservation lands, indigenous interests and more.

The Crown Mountain Metallurgical Coal Project is a 2 million tonne per year, open-pit, 15-year project that is close to Sparwood between Teck’s Elkview and Line Creek Mines. The project has an initial capital cost of \$412 million.

Access to the site will be through Grave Creek Rd which will be widened to 12m and will remain open for recreational users to get to popular fishing sites at Grave Lake. The company will be using highway-grade trucks to transport coal to a rail loading site above the grasslands south of where Grave Creek joins with the Elk River.

The company owns exploration licenses to the south of the footprint of the proposed mine, but Baines said there were as yet no plans to increase the lifespan of the project beyond 15 years as the geology and resources of the area to the south was poorly understood.

If all goes to plan, NWP plans to construct the project between Q1 2023 and Q2 2024 for a Q3 2024 operations date. The project would begin to wrap up in 2038.

NWP is 78 percent owned by Jameson Resources and 22 percent owned by Bathurst Resources, which is the largest coal mining company in New Zealand. Both are listed on the Australian Securities Exchange (ASX).

[READ MORE: New Centennial Square design green-lit by Sparwood](#)

scott.tibballs@thefreepress.ca

Like us on [Facebook](#) and follow us on [Twitter](#)

MINING

MUNICIPAL GOVERNMENT