

# Appendix 4-T

---

Project Newsletters



## Background

### Project Overview

The Crown Mountain Coking Coal Project is a proposed source of high-quality coking coal within the Elk Valley of southeastern British Columbia (BC), Canada.

The Project is located near the town of Sparwood BC and situated between two existing coking coal mines operated by Teck Resources Limited (Elkview and Line Creek).

Potential environmental interactions with the Project are being considered in the design and planning of the Project and are subject to a rigorous regulatory process.

Engagement with Indigenous peoples, local communities, and stakeholders will help shape the Project and efforts to mitigate potential impacts.

More information about the Project can be found on the [NWP website](#).

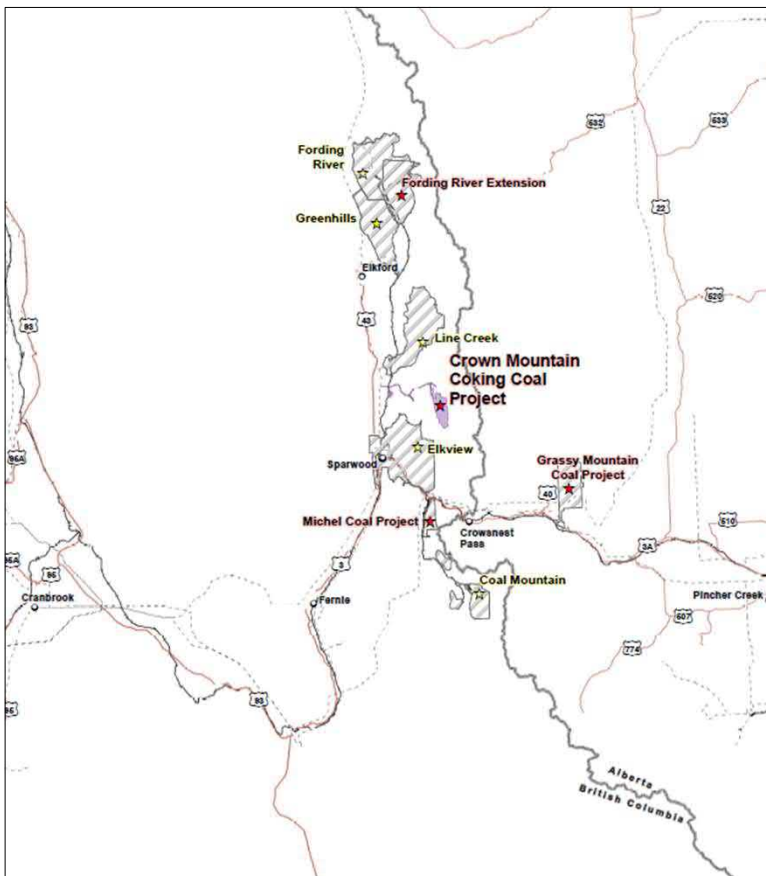


### Regulatory Process

The Crown Mountain Coking Coal Project entered the regulatory process in 2014. At that time, it was determined that the Project would be subject to an environmental assessment by the government of BC and the government of Canada. Both processes require collection of:

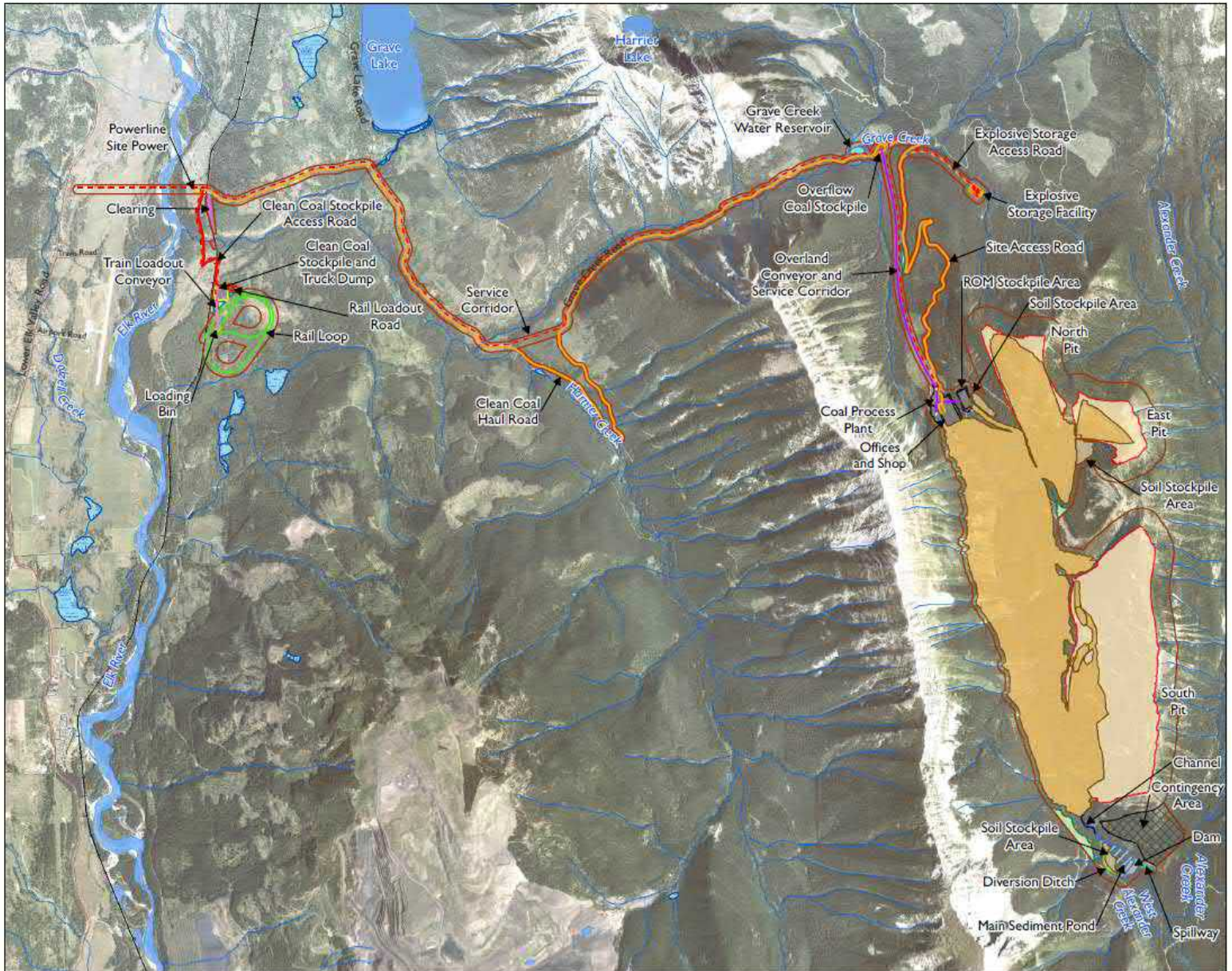
- Baseline data on existing environmental and socio-economic conditions
- Integration of input from Indigenous peoples
- Assessment and in some cases robust modelling of potential Project impacts
- Ongoing adjustments to Project designs and plans to mitigate potential negative impacts
- Engagement with stakeholders at multiple steps in the process

Should the Project receive approval from the government of BC and the government of Canada for the environmental assessment, detailed permits will be required for each Project interaction with regulatory legislation (e.g., BC Mines Act, Federal Fisheries Act). The permit applications require detailed engineering work and are subject to a formal review and engagement process.





## Background



## Project Layout

The Project mine pits, processing plant, site facilities, and mine rock storage facility would be located in the West Alexander Creek drainage on the western slopes of Crown Mountain.

A covered clean coal storage and rail load out facility would be located near the existing railway through the Elk River valley.

The Grave Creek Forest Service Road would be used by the Project with the intent to share the road with the public.



## Background

### Regulatory Schedule

NWP plans to submit our environmental assessment to BC and the Federal government in the first half of 2021.

The project is proposed to be under production and operations from 2024 through 2038, with active closure and reclamation from 2039 through 2043.

ACTIVITY	Year -3				Year -2				Year -1				Year 1			
	2021				2022				2023				2024			
	Q1	Q2	Q3	Q4	Q1	Q2	Q3	Q4	Q1	Q2	Q3	Q4	Q1	Q2	Q3	Q4
EA Development and Engagement	█															
Submit EA		★														
EA Review and Engagement		█	█		█	█	█									
EA Certificate Received							★									
Permit Application Development				█	█	█										
Permit Review and Engagement							█									
Permits Received								★								
Owner Approval (Sanction)							█	█								
Site preparation and construction								█	█	█	█	█				
Plant Commissioning & Early Production															★	
Commercial Production / Operations															█	█

### Additional Regulatory Information

More information about the company and the team can be found on the following websites:

- BC environmental assessment process: <https://www2.gov.bc.ca/gov/content/environment/natural-resource-stewardship/environmental-assessments/the-environmental-assessment-process/2002-act-environmental-assessment-process>
- Canadian environmental assessment process: <https://www.canada.ca/en/impact-assessment-agency/services/policy-guidance/impact-assessment-process-overview.html>
- BC mine permitting process: <https://www2.gov.bc.ca/gov/content/industry/mineral-exploration-mining/permitting>





## Updates

### Project Team

NWP and the Crown Mountain Coking Coal Project have a small, dedicated team. Everyone involved, from the ownership team, the Board, and the employees are experienced resource professionals with experience including developing and operating specialty mines. Changes have occurred in the past few years that will continue to build NWP's strengths:

- 2018 – NWP's ownership gained an additional partner: Bathurst Resources Limited. Bathurst currently owns 22.2% of NWP Coal Canada Ltd and brings to NWP the hands-on know-how of New Zealand's largest specialist coal company
- Early in 2020 – NWP appointed a new Executive Director: Joel Nicholls. Mr. Nicholls brings a lot of energy to the team and a commitment to driving an organizational strategy with strong stakeholder engagement to achieve growth sustainably
- Late in 2020 – NWP appointed a new Manager Environment and Engagement: Dave Baines. Based in Elkford BC, near to the Project site, Dave has over 20 years experience with environmental assessment and engagement and a real passion for being involved with the local community and Indigenous Peoples.



### Engagement

NWP is making a concerted effort to improve engagement. Some key engagement activities we are planning to help understand stakeholders and share information include:

- Ongoing discussions with Indigenous peoples and local stakeholders – responsive to questions and request for information
- Formal public comment periods (with open houses) through the regulatory process
  - NWP, the government of BC and the government of Canada will be engaging soon after NWP submits the Project environmental Assessment (early 2021)
  - NWP and key regulators will be engaging for specific permitting processes (mid 2022)
- Ever-green 'News and Updates' section on website (link to webpage 2)
- Quarterly Project Newsletter – with special editions for key milestones
- Semi-annual surveys – with special editions for hot topics.

More information about engagement and how NWP will share news and updates can be found on the NWP website: [www.nwpcol.com](http://www.nwpcol.com)



## Updates

### Recent Activities

Some key Project activities NWP has completed recently, include:

- Completing data collection for environmental assessment baseline studies
  - Note that water quality surveying is ongoing (commenced in 2012) to build our data set towards permitting and potentially future Project monitoring
- Completed baseline reports, and made significant progress towards completing assessment of potential impacts and integrating impact mitigation into Project designs and plans
- Reinvigorating our engagement through efforts that include:
  - Meetings and discussions with Indigenous Peoples
  - Meetings with local municipalities
  - Meetings with some of the local clubs and associations; particularly with land user groups that access the Project area
- Launched an online survey designed for NWP and stakeholders to ‘get to know each other’ on January 26, 2021. We’re excited to see the level of response. We intend to keep the survey open until March 31, 2021. The next newsletter will include some information on what we learned through the survey.
- Building our Environmental Assessment Application package for submission to the BC Environmental Assessment Agency and to the Impact Assessment Agency of Canada for submission in the next few months.

### Participate in our survey

This 10 question survey should take about 3 minutes to complete. It’s designed to help NWP learn about your knowledge of the Project and about your interests. Thanks!!

<https://www.surveymonkey.com/r/7KQNK6R>



### Contact

Name: Dave Baines, Manager Environment and Regulatory, NWP Coal Canada Ltd

Email: [dave.baines@nwpc coal.com](mailto:dave.baines@nwpc coal.com)

Phone: +1 (604) 629-8605



## Project Overview

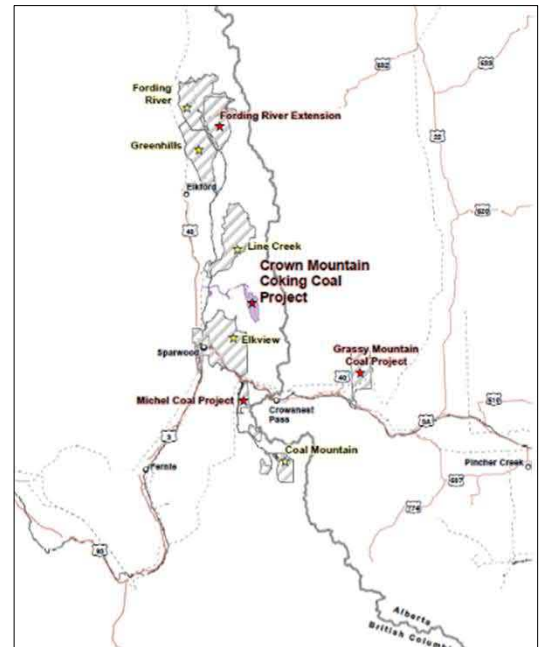
The Crown Mountain Coking Coal Project is a proposed source of high-quality coking coal within the Elk Valley of southeastern British Columbia (BC), Canada.

The Project is located near the town of Sparwood BC and situated between two existing coking coal mines operated by Teck Resources Limited (Elkview and Line Creek).

Potential environmental interactions with the Project are being considered in the design and planning of the Project and are subject to a rigorous regulatory process that started in 2014.

Engagement with Indigenous peoples, local communities, and stakeholders will help shape the Project and efforts to mitigate potential impacts.

More information about the Project can be found on the [NWP website](#).

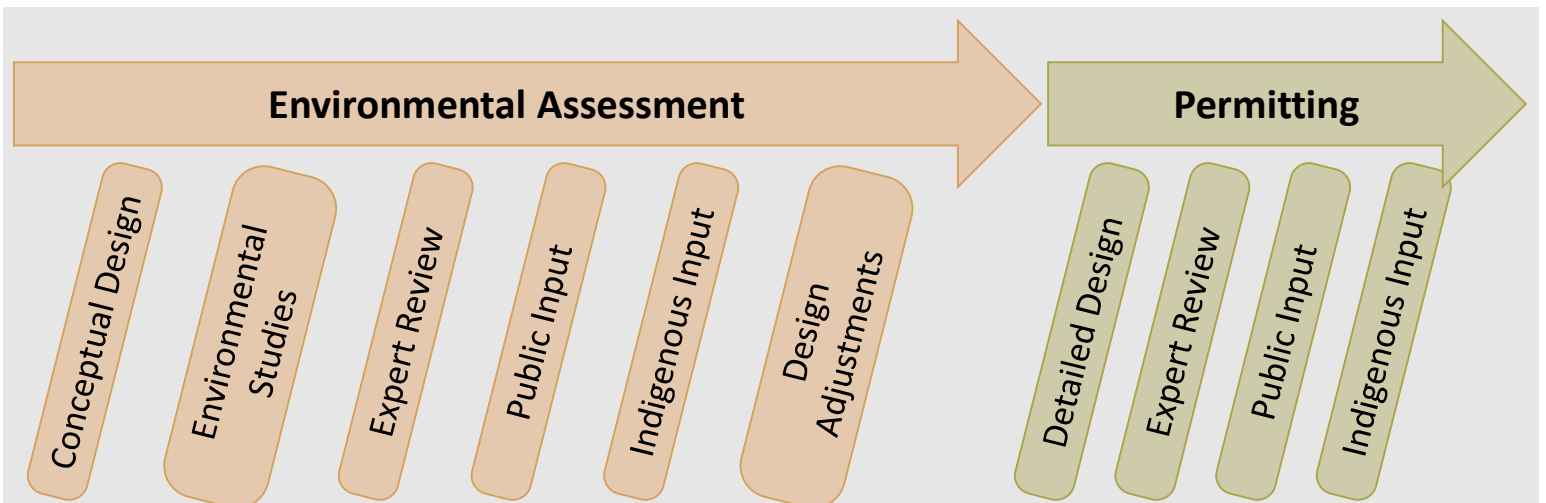


## The Regulatory Continuum: Environmental Assessment Through Permitting

The first regulatory step for the Crown Mountain Coking Coal Project, like many major mining projects in BC, is completing an environmental assessment. The second regulatory step is applying for permits and approvals.

The environmental assessment looks at the overarching concept to understand the potential negative and positive impacts to the environment, to the local communities, to Indigenous peoples, and more. Permit applications are much more detailed and are tied to the requirements of specific legislation (e.g., Environmental Management Act, Mines Act, Water Sustainability Act, Fisheries Act).

Each step of the Regulatory continuum involves review by technical experts and Indigenous peoples, as well as input from the public. Throughout the process, the Project designs and plans are refined to reduce potential negative effects and to improve potential positive impacts.





## Assessment Requirements

The environmental assessment for the Project has to meet specific requirements set by the BC Environmental Assessment Office and the Impact Assessment Agency of Canada. The requirements are available online:

- BC Environmental Assessment Office's [Application Information Requirements](#) (2015)
  - [Amendment](#) (2020)
- Impact Assessment Agency of Canada's [Environmental Impact Statement Guidelines](#) (2015)
  - [Amendment](#) (2020)



## Regulatory Schedule

NWP began our regulatory process in 2014. NWP plans to submit our environmental assessment to BC and the Federal government in the first half of 2021.

The project is proposed to be under production and operations from 2024 through 2038, with active closure and reclamation from 2039 through 2043.

ACTIVITY	Year -3				Year -2				Year -1				Year 1			
	2021				2022				2023				2024			
	Q1	Q2	Q3	Q4	Q1	Q2	Q3	Q4	Q1	Q2	Q3	Q4	Q1	Q2	Q3	Q4
EA Development and Engagement																
Submit EA	★															
EA Review and Engagement																
EA Certificate Received							★									
Permit Application Development																
Permit Review and Engagement																
Permits Received								★								
Owner Approval (Sanction)																
Site preparation and construction																
Plant Commissioning & Early Production															★	
Commercial Production / Operations																





## Access

### Concerns

Many stakeholders have let NWP know that they are concerned about potential changes to access to the Project area including for:

- Recreation
- Hunting
- ATV riding
- Snowmobiling
- Traditional use



Photo credit Dave Baines 2020

### Experience

NWP's management has experience working closely with outdoor users to reduce impacts on access and land-use.

In the Tumbler Ridge area, coal mines operate by sharing roads with snowmobilers accessing their area. The snowmobile load out (parking area) is very close to an operational pit and active blasting. However, with co-operation and collaboration, everyone remains safe and gets to where they want to get to.

### Commitment

NWP is committed to sharing the area with other land-uses including Indigenous traditional use, trapping, hunting, and recreation.

NWP will collaborate with regulators, the public, and Indigenous peoples to develop plans that minimize changes to access to the Project area while maintaining everyone's safety.



Photo credit Dave Baines 2021

### Access Considerations

NWP intends to share the Grave Creek Road with the public.

The public would not be permitted to access the mine site or the rail load out.

Bow only hunting areas and closed areas around the mine site would need to be developed through discussion with the regulators, the public, and Indigenous peoples.

During blasting mine employees would have to temporarily close trails and sweep through areas to be sure everyone is safe.



## Surveys

### Results of the Getting To Know About Each Other Survey

The *Getting to know about each other* survey was distributed by posting it to Facebook and LinkedIn on January 24, 2021. The survey was closed to respondents on April 5, 2021. In general, NWP sees survey as a success. Many people engaged with NWP through the survey, about the survey, and after the survey. It helped raise awareness in the Elk Valley about the Project and provided NWP with some insights about the key concerns of local stakeholders.

A key learning was the level of importance stakeholders put on land-use, access, and recreation. NWP assumed this was important to local stakeholders but was not aware that it was a higher priority than wildlife, water quality, or fish. NWP will ensure that we effectively engage about these issues and bring information about our access plans and commitment to share the land in front of the public.

Another key learning was the preference for how to share information. NWP will put effort into keeping our website up to date and producing a meaningful quarterly newsletter for the Project.

NWP acknowledges that there is opposition to the Crown Mountain Coking Coal Project. NWP is heartened that less than 9% of the respondents (51 out of 586) chose to express opposition in their comments.

A full report on the survey can be found on the NWP website at: <https://www.nwpcol.com/news-and-updates/>

### Ongoing Getting To Know About Land-use And Access Survey

The *Getting to Know About Land-Use and Access* survey was distributed by posting it to Facebook and LinkedIn and by direct email to select stakeholder groups on March 4, 2021. The survey was intended to help NWP gather information about land-use and access to improve our assessment of potential Project impacts and to give stakeholders an opportunity to share more detailed information about land-use and access than was possible in our first survey.

This survey will stay open until June 30, 2021.

Please consider participating in the survey:  
<https://www.surveymonkey.com/r/KWJGBQY>



[This Photo](#) by Unknown Author is licensed under [CC BY-SA](#)



## Recent Project Activity

Over the past few months, the Project has focused on engagement and completing our environmental assessment. This includes:

- Engagement with many municipalities, stakeholder groups, and Indigenous peoples (page 6).
- Participating in environmental assessment technical working groups with the Impact Assessment Agency of Canada, the BC Environmental Assessment Office and representatives of the Ktunaxa Nation Council. The working groups also include technical experts from other agencies including:
  - BC Ministry of Environment
  - BC Ministry of Forests, Lands, Natural Resource Operations and Rural Development
  - BC Ministry of Energy, Mines and Low Carbon Innovation
  - Environment and Climate Change Canada
  - Natural Resources Canada



Photo by [Chris Montgomery](#) on [Unsplash](#)

- Publishing two online surveys – one designed to help NWP and our stakeholders learn more about each other and one to learn more about land-use and access in the Project area (page 4).
- Publishing a FAQ document based on feedback and questions we’ve heard at meeting with municipalities, local stakeholder groups, and Indigenous Peoples. You can read the entire FAQ document at: <https://www.nwpcoal.com/news-and-updates/>



This figure from [Elk Valley CEMF Infographic](#) downloaded 2021-04-09

- Participating in the Elk Valley Cumulative Effects Management Framework (CEMF):
  - NWP actively attends CEMF working group meetings
  - NWP is sharing maps and spatial data with CEMF

<p><b>FAQs</b></p> <p><b>Documents:</b></p> <ul style="list-style-type: none"> <li>Click here to download the <a href="#">March FAQ Document.PDF</a></li> </ul>	<p><b>NEWSLETTER</b></p> <p><b>Current Newsletter:</b></p> <ul style="list-style-type: none"> <li>Click here to view <a href="#">NWP's February Newsletter.PDF</a></li> </ul>
<p><b>SURVEYS</b></p> <p><b>Current Active Survey:</b></p> <ul style="list-style-type: none"> <li>Click here to participate in NWP's <a href="#">Getting to Know About Land-Use and Access</a> survey</li> </ul> <p><b>Survey Summary Document</b></p> <ul style="list-style-type: none"> <li>Click here to download NWP's <a href="#">Getting to Know About Each Other Survey Summary Document.PDF</a></li> </ul>	<p><b>UPDATES ABOUT MILESTONES</b></p> <p><b>2021 Milestones</b></p> <ul style="list-style-type: none"> <li><b>Spring 2021:</b> NWP to submit environmental assessment to BC EAO and IAAC.</li> <li><b>Summer/Fall 2021:</b> Engagement by BC EAO and IAAC including public comment period and open house sessions. Sessions will likely be virtual due to COVID 19.</li> </ul> <p><b>2022 Milestones</b></p> <ul style="list-style-type: none"> <li><b>Spring/Summer 2022:</b> Engagement by permitting agencies on specific permit applications including public comment periods.</li> </ul>



## Engagement In the First Quarter of 2021

### Presentations shared with:

- District of Elkford Mayor and Council
- District of Sparwood Mayor and Council
- City of Fernie Mayor and Council
- Municipality of Crowsnest Pass
- Regional District of East Kootenay
- Elk Valley Mountaineers
- Sparwood and District Fish and Wildlife Association

### Information shared with:

- Sparwood, Elkford, and Fernie outdoor clubs
- Trappers
- Conservation groups
- Elkford Chamber of Commerce
- Sparwood Chamber of Commerce
- Interested members of the public

### Indigenous engagement with:

- Ktunaxa Nation Council
- Shuswap Indian Band
- Piikani Nation
- Siksika Nation
- Kainai Nation (Blood Tribe)
- Stoney Nakoda Nation
- Tsuut'ina Nation
- Métis Nation of Alberta
- Métis Nation British Columbia
- Elk Valley Métis Association

### General:

- Quarterly newsletter started
- Website updated
- FAQ published to website (page 5)
- Two public surveys (page 4)

## For More Information Please Contact

Name: Dave Baines, Manager Environment and Regulatory, NWP Coal Canada Ltd

Email: [dave.baines@nwpc coal.com](mailto:dave.baines@nwpc coal.com)

Phone: +1 (604) 629-8605

## Subscribe to our newsletter!

NWP intends to publish four newsletters a year. Our intent is to focus on useful information without razzle-dazzle or greenwashing.

To sign up for our quarterly newsletter click on the following link:

<https://nwpc coal.eo.page/newsletter>

To suggest topics for our newsletter, please send an email to

[dave.baines@nwpc coal.com](mailto:dave.baines@nwpc coal.com)



# Crown Mountain Coking Coal Project Newsletter #03

## In this issue:

- **Not Business as Usual**
- **Important Project Features**
- **Comparing Crown Mountain to Fording River Extension**
- **Schedule Update**
- **Recent Project Activities**





## Not Business as Usual

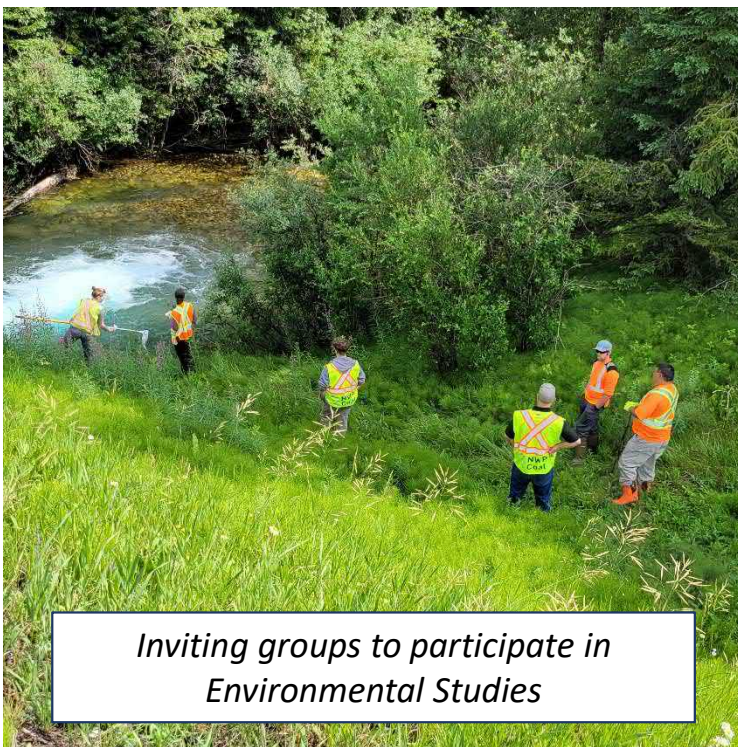
### Source Control not Treatment

Plans for the Crown Mountain Coking Coal Project involve keeping metals from leaching out of mine rock (source control) rather than removing the metals after they have entered the environment (treatment).

Building layered waste rock storage will keep selenium and other metals from leaving the waste rock, remove the need for a tailings dam, and create a self-managed landscape ready for reclamation.

NWP is committed to additional water quality mitigations as contingencies, including traditional treatment should it be required.

*Layered Approach to Waste Rock Management*



*Inviting groups to participate in Environmental Studies*

### Collaborative Regulatory Process

NWP is pleased to be part of the changes to how coal mines are assessed in the Elk Valley.

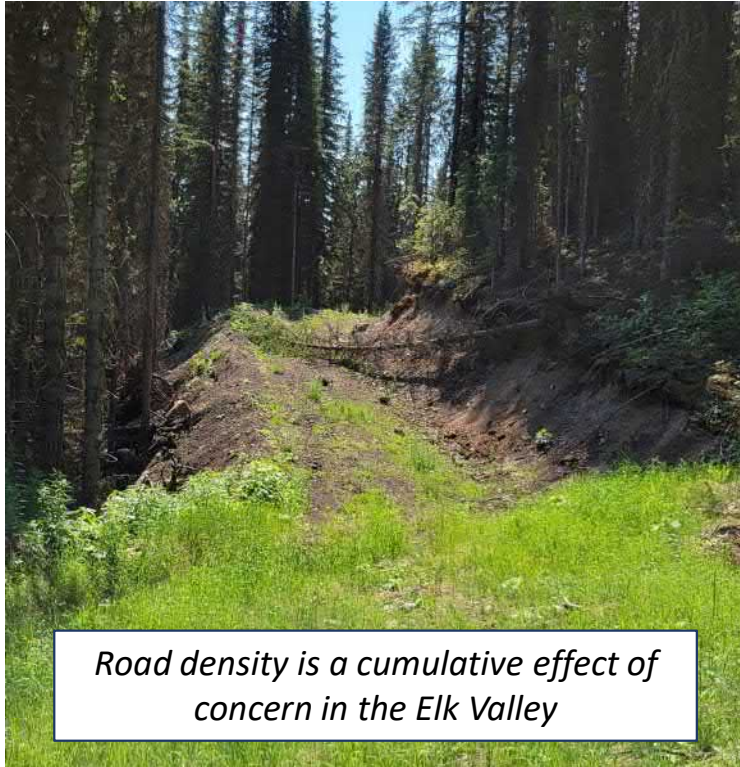
Following the principals of the United Nations Declaration on the Rights of Indigenous Peoples, the Ktunaxa and other nations are being invited to the table to be part of the assessment, of compliance planning, and eventually of enforcement.

NWP is committed to helping build a process that is:

- Inclusive
- Trusted
- Fair



## Not Business as Usual



*Road density is a cumulative effect of concern in the Elk Valley*

### Taking Only What is Needed

The Project is focused on a high-quality coking coal deposit located along the side of a small mountain ridge. The Project is designed to access all the available coal by:

- Mining to the base of the coal seams
- Mining to where the coal seams intersect the ground surface.

Because the coal is near to the surface, the Project will have to move less waste rock than most of the mines in the Elk Valley. This minimizes the total size of the land disturbance caused by the Project.

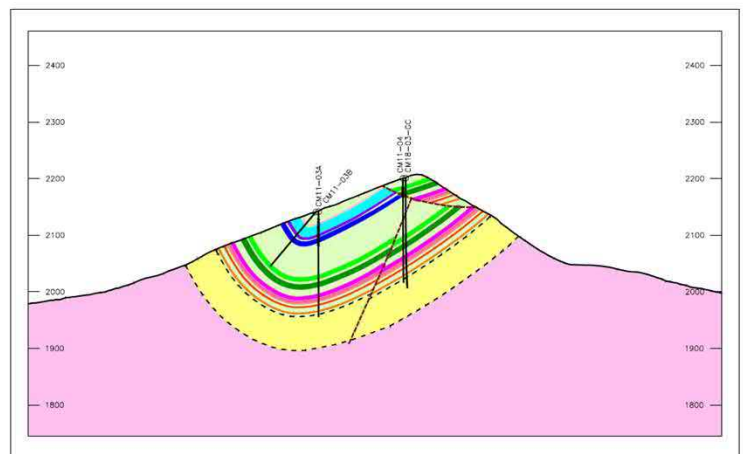
### Cumulative Effects Management

NWP believes that managing cumulative effects takes both effective multi-stakeholder dialogue and strong clear regulatory direction. NWP actively participates in and supports the Elk Valley Cumulative Effects Management Framework (CEMF).

NWP is committed to working with BC and Indigenous Nations to help CEMF evolve to cover everyone’s needs and to help heal the land and right the wrongs of the past.

The Project anticipates meeting strict project specific environmental limits and offset requirements that would ensure our contribution to existing cumulative effects is essentially unmeasurable.

*Geological Cross-Section of North Pit*





## Not Business as Usual

### Higher Water Recovery = Lower Additional Water Needs

The Project's coal processing plant has been designed to capture and reuse most of the water used in the process.

Higher than typical water recovery from the clean coal due to hyperbaric drying rather than thermal drying.

Water recovery from the coarse coal rejects which most processing plants do not do.

Water recovery from the tailings which most processing plants do not do.

Recovering this additional water means that the Project would less make-up water from the environment than a conventionally designed coal processing plant. This will reduce potential Project impact on stream flow, fish habitat, and riparian habitat.

### Hyperbaric Drying

The Project would dry the clean coal using hyperbaric drying instead of thermal drying. Hyperbaric drying uses differentials in pressure and steam to remove water from the washed coal. Thermal drying (the typical approach) burns large volumes of natural gas to create heat to dry the washed coal.

The Project's approach is far more efficient and drastically reduces the volume of natural gas required which leads to a related reduction in greenhouse gas emissions and the need for a much smaller pipeline.

### No Tailings Dam

The Project would dry tailings generated when cleaning the coal and use the dry tailings and dry coarse coal rejects as part of the selenium source control plan. This means the Project does not need a specific tailings storage facility (i.e., no tailings dam) which will reduce the Project footprint and water quality impacts.



*Sampling water on an Elk River  
tributary*







## Important Project Features

### Single Water Shed

All mine affected water would report to the West Alexander Creek watershed. This watershed narrows just downstream of the mine site and just upstream of its confluence with Alexander Creek. This will bring all water to one point where it can be monitored for compliance with anticipated site-specific release requirements and treated if necessary.

### Covered Clean Coal Stockpiles

Clean coal at the rail loadout would be stored inside a tent structure. This will significantly reduce dust and runoff impacts from the clean coal stockpiles as well as improve quality control.

### No High Elevation Grasslands

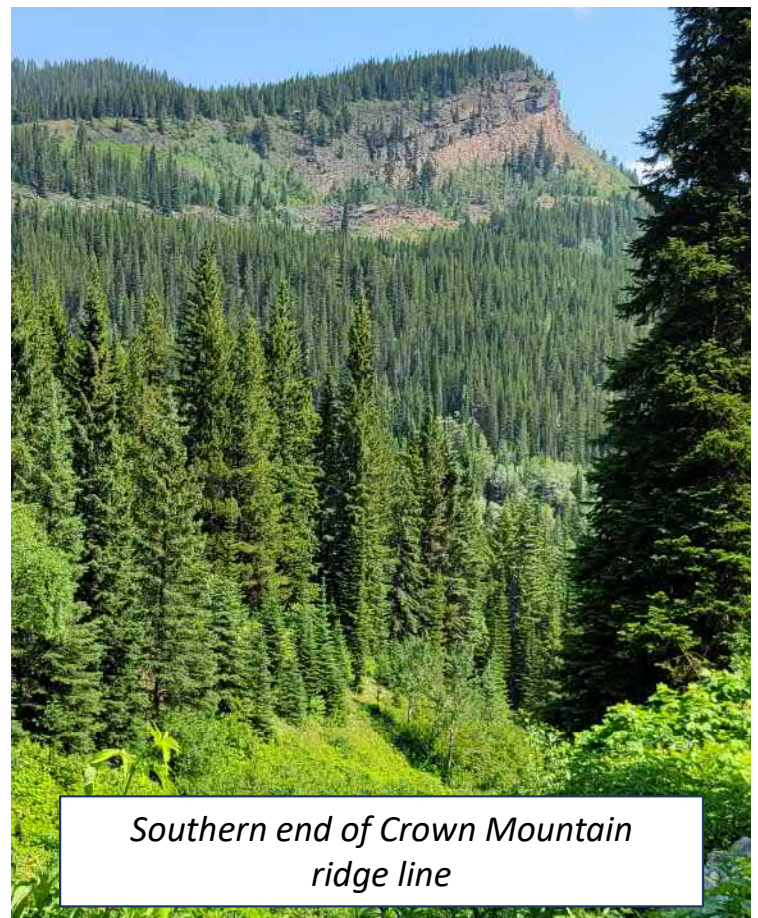
Crown Mountain is a low mountain ridge that is not high enough to have high elevation grasslands. These grasslands are one of the Elk Valley Cumulative Effects Management Framework valued components. Some high elevation grassland communities are red and blue listed in BC. These grasslands are also closely related to important winter range for bighorn sheep.

NWP is pleased that our Project will not have any direct impacts on high elevation grasslands or bighorn sheep winter range.

### Offsets

NWP has tentative plans to improve habitat for westslope cutthroat trout within an Elk River tributary as part of the Project's future fish habitat offsetting plan.

NWP has the option to purchase land in the Elk Valley near the Project. This land could be used to offset impacts to Indigenous rights and interest and/or to recreational use. It could also be part of a conservation offset plan.



*Southern end of Crown Mountain  
ridge line*



## Crown Mountain Vs Fording River Extension

People often ask NWP for a sense of how big our Project is and suggest we compare it to Teck's Fording River Extension project. Here's some simple ratios to show our relative sizes.

	Crown Mountain	Fording River Extension
<b>Waste Rock</b>  <b>0.27 vs 4.1 Bbcm</b>  <i>Ratio of 1:15</i>		
<b>Production</b>  <b>28.4 vs 360 Mmtcc</b>  <i>Ratio of 1: 13</i>		
<b>Disturbance</b> (including existing infrastructure):  <b>851 vs 9323 ha</b>  <i>Ratio of 1:11</i>		

Bbcm = billion bank cubic metres, Mmtcc = million metric tonnes clean coal, ha = hectares





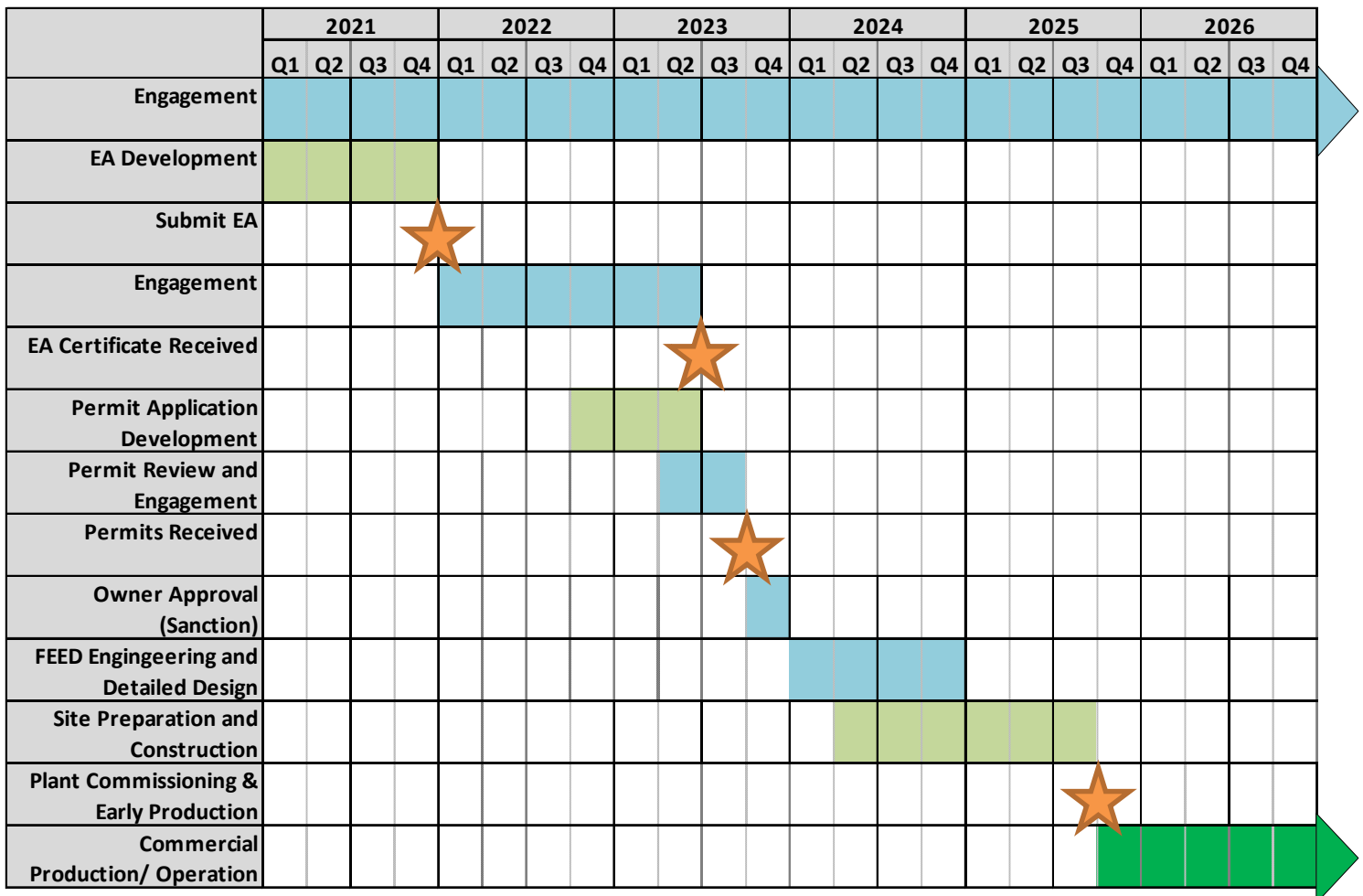
## Updated Regulatory Schedule

NWP has updated our schedule to reflect delays related to engaging multiple Indigenous nations during challenging times for engagement due to the COVID pandemic.

NWP began our regulatory process in 2014. NWP plans to submit our environmental assessment to BC and the Federal governments by the end of 2021.

The Project is proposed to be under production and operations from 2025 through 2040, with active closure and reclamation from 2041 through 2044.

### Crown Mountain Coking Coal Project - Key Regulatory Milestones





## Recent Project Activity

### Site Visits

Representatives of several Indigenous nations visited our Project site over the 2021 summer season. Several of the visits included the nation assessing Traditional ecological values and beginning to understand the Traditional land use of the area.

### Environmental DNA study

NWP completed an environmental DNA study on an Elk River tributary to understand if it is being used by westslope cutthroat trout. The study found that there are no fish above a barrier to fish passage. Since the tributary has no fish, but good fish habitat, it makes it a good candidate as a potential fish habitat offset.

### Sharing Drafts

As required by the Impact Assessment Agency of Canada, NWP has shared draft chapters of our environmental assessment with Indigenous nations to get their feedback and allow NWP to incorporate their input into the assessment prior to submission to the regulators.

### Talking Trails

NWP has met with recreational user groups to understand their thoughts on our potential impacts to their use of trails in the area and how we could work with them to reduce those impacts. NWP hopes to meet with regulators about ideas brought forward by the groups.

### For more information please contact

Name: Dave Baines, Manager Environment and Regulatory, NWP Coal Canada Ltd

Email: [dave.baines@nwpcol.com](mailto:dave.baines@nwpcol.com)

Phone: +1 (604) 629-8605

### Subscribe to our newsletter!

NWP intends to publish four newsletters a year. Our intent is to focus on useful information without razzle-dazzle or greenwashing.

To sign up for our quarterly newsletter click on the following link:

<https://nwpcol.eo.page/newsletter>

To suggest topics for our newsletter, please send an email to

[dave.baines@nwpcol.com](mailto:dave.baines@nwpcol.com)



# Crown Mountain Coking Coal Project Newsletter #04

## In this issue:

- **Thoughts on Carbon Reduction**
- **KNC Letter to BC and Canada Requesting a Pause to EAs**
- **A Word from the President**
- **Recent Project Activities**



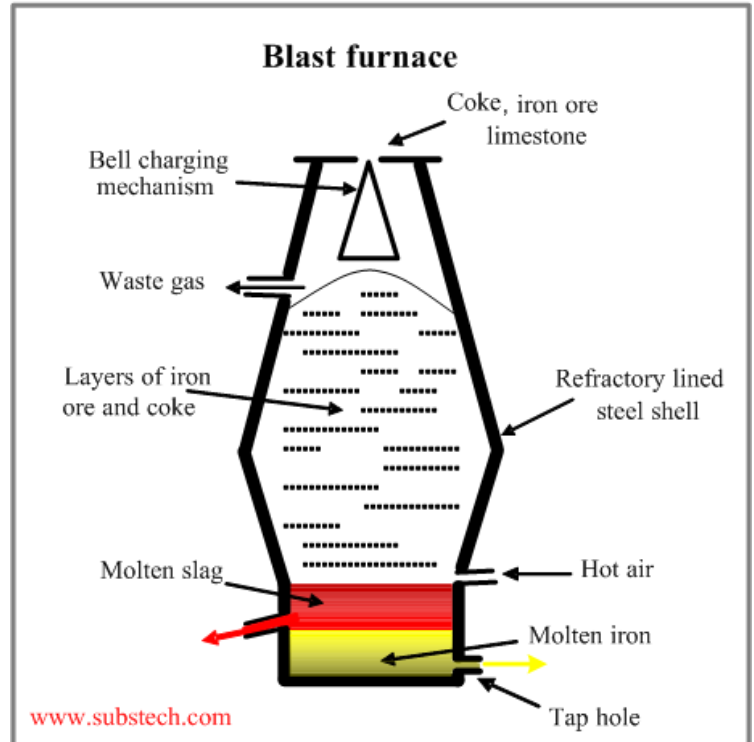


## Thoughts on Carbon Reduction

### The Future of Metallurgical Coal

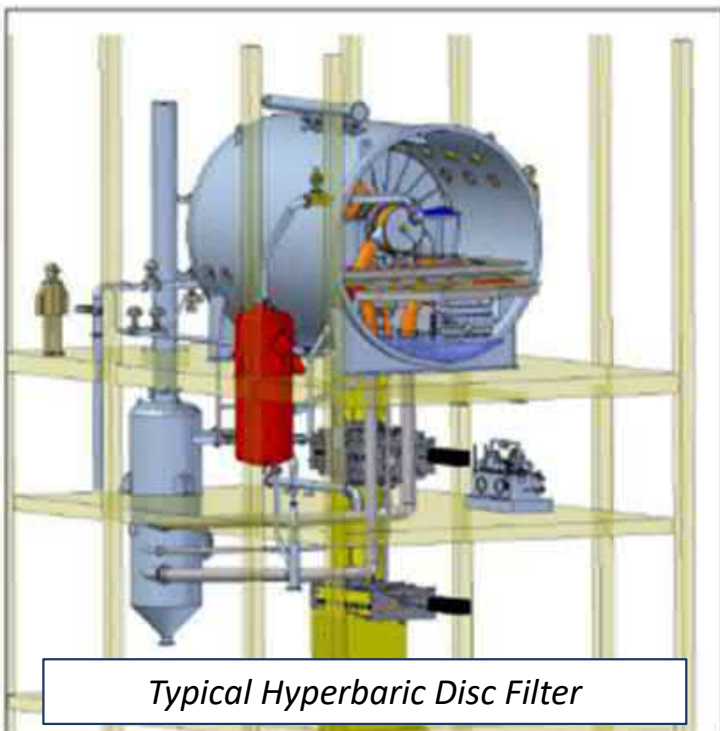
Steel makers are actively researching ways to reduce the carbon footprint of steel production. The technologies are promising and will, over the next few decades, start to replace typical blast furnaces and their use of metallurgical coal.

In the meantime, the best way to reduce the carbon footprint of steel production is to use high quality coals which require less coal per ton of steel produced. Elk Valley metallurgical coal, including the coal from NWP's Crown Mountain Project, are very high quality and will help the transition towards lower carbon production.



[www.substech.com](http://www.substech.com)

[This Photo](#) by Unknown Author is licensed under [CC BY-SA-NC](#)



Typical Hyperbaric Disc Filter

### Carbon Neutral by 2050

NWP supports Canada's objective to reach carbon neutrality by 2050.

While our mine's planned 15 year lifespan will have operations and closure complete well before 2050, we will still strive to reduce our carbon emissions below business as usual for coal mines.

Our electrical supply is 95% renewable. We will evaluate use of electrical vehicles, including for our clean coal haul. We will use a modern coal processing plant that requires far less natural gas than older plants that rely on thermal drying.



# KNC Letter to BC and Canada Requesting a Pause to Environmental Assessments

## Background

On August 13, 2021, the Lands and Resource Council and Nation Chair of the Ktunaxa Nation Council (KNC) sent a letter to BC and Canada requesting that BC and Canada suspend environmental assessments (EAs) for all new coal mine and coal mine expansion projects proposed in the Elk Valley.

The KNC cited concerns including:

- Current impacts from existing mining operations
- Challenges with existing regulatory regimes and measures to mitigate and reduce those impacts
- Water quality
- Cumulative effects

## NWP Thoughts

NWP agrees with many of the concerns raised by the KNC. Business as usual is no longer acceptable if the Elk Valley is to heal from past environmental impacts.

NWP is committed to going beyond business as usual to design, operate, and manage our Project. Our Project has been designed to have very low impacts and to not add to the overall cumulative effects in the Elk Valley. We are keen to work with regulators, KNC, other Indigenous Nations, and the public to ensure the assessment and oversight of projects is a cooperative approach of all parties to ensure transparency, accountability, and effective mitigation.

NWP looks forward to more conversations with KNC.

## Government Response

BC has responded to the KNC in writing indicating their preference to work through issues and that there are no provisions for the requested pause within the *Environmental Assessment Act (2002)*.

Canada has not responded to the KNC since they were in the midst of an election when the letter was written. It's likely a response will come soon now that a new Minister of Environment and Climate Change has been appointed.

**Links:** [KNC Letter](#) [BC's Response](#)





## A Word from the President

### Introduction

Michael Gray joined NWP as President in Mar 2021. Michael intends to spend a substantial period of the year in both the Elk Valley and Vancouver working to progress the Crown Mountain Project.

Michael has extensive experience in the successful development of greenfield steelmaking coal projects around the world.

In developing new projects, he has sought close partnerships with indigenous nations and local communities to ensure projects have been progressed to minimize environmental impacts and maximize benefits to local communities.

### Who is NWP Coal Canada?

NWP Coal Canada is a partnership between Australian based Jameson Resources and New Zealand based Bathurst Resources.

Jameson is a developer of steelmaking coal projects with a management team with an extensive track record of successful project development and development of long-term relationships with both local communities and steelmaking customers.

Bathurst is a successful and respected operator of coal mines in NZ and an exporter of steelmaking coal to key Asian customers.

Both Jameson and Bathurst recognize the critical importance of high-quality steelmaking coal in helping the world transition to a low carbon economy.



*"It's a great pleasure to join NWP and to lead the team to progress the project. Crown Mountain is unique amongst new projects due to its small scale, shallow high-quality coal and strategic location. The compact project footprint and fully contained water catchment provides the perfect opportunity to demonstrate a new era for environmental management of steelmaking coal projects.*

*There is a lack of new supply of high-quality steelmaking coal and leading Asian steelmakers are seeking partnership with projects which meet the highest environmental standards. NWP is committed to being a leader in transparent and accountable environmental management and we look forward to working with the Elk Valley community to progress a new era of the steelmaking coal industry."*

Michael Gray





## Recent Project Activity

### Geotechnical Investigation

Through October and November, NWP completed a geotechnical investigation to improve our understanding of subsurface conditions at the site of our main sediment pond. This will help in the design of the pond and help us to understand potential paths for groundwater beside and below the structure.

The main sediment pond is intended to capture all run off from our operations in years 5 through closure. This single point of containment will allow us to closely monitor water quality, to manage water quantity, and to implement additional mitigation efforts if needed.

Road and site construction, drilling, and reclamation all occurred in one campaign.



*Geotechnical drill site after reclamation*

### For more information please contact

Name: Dave Baines, Manager Environment and Regulatory, NWP Coal Canada Ltd

Email: [dave.baines@nwpc coal.com](mailto:dave.baines@nwpc coal.com)

Phone: +1 (604) 629-8605

### Subscribe to our newsletter!

NWP intends to publish four newsletters a year. Our intent is to focus on useful information without razzle-dazzle or greenwashing.

To sign up for our quarterly newsletter click on the following link:

<https://nwpc coal.eo.page/newsletter>

To suggest topics for our newsletter, please send an email to

[dave.baines@nwpc coal.com](mailto:dave.baines@nwpc coal.com)

