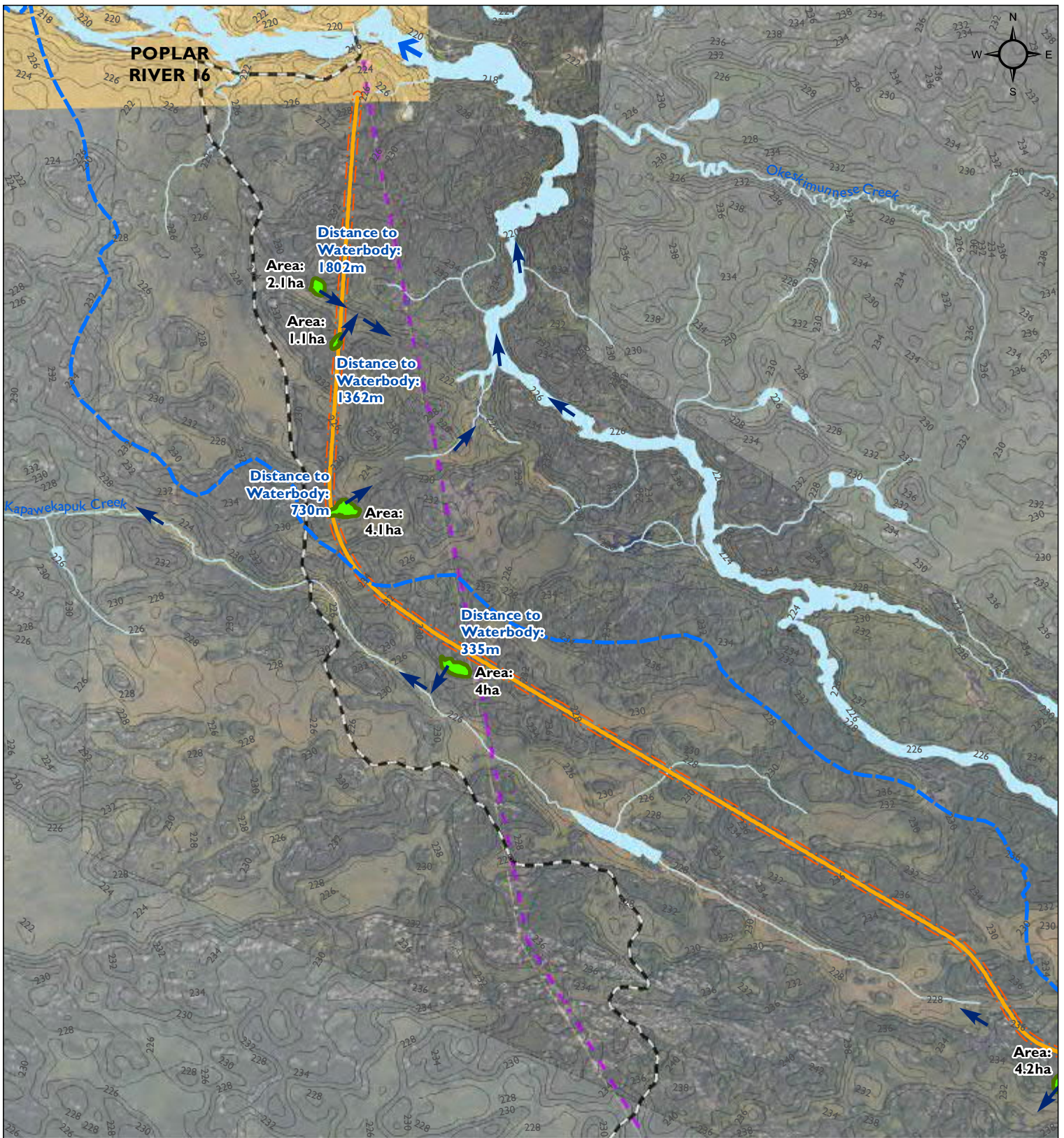


## **Appendix 3-3:** Potential Quarry Site Locations

---



Project 4 - All-Season Road Connecting Berens River to Poplar River First Nation

Figure 3-3 Grid I

Overview of P4 All-Season Road and Quarries

- P4 All-Season Road Alignment
- ➔ Drainage Flow Direction
- P1 All-Season Road (South of Berens to PTH 304) - Under Construction
- Contours
- - - 2013/2014 Manitoba Winter Road
- [ ] Watersheds Boundary
- Transmission Line

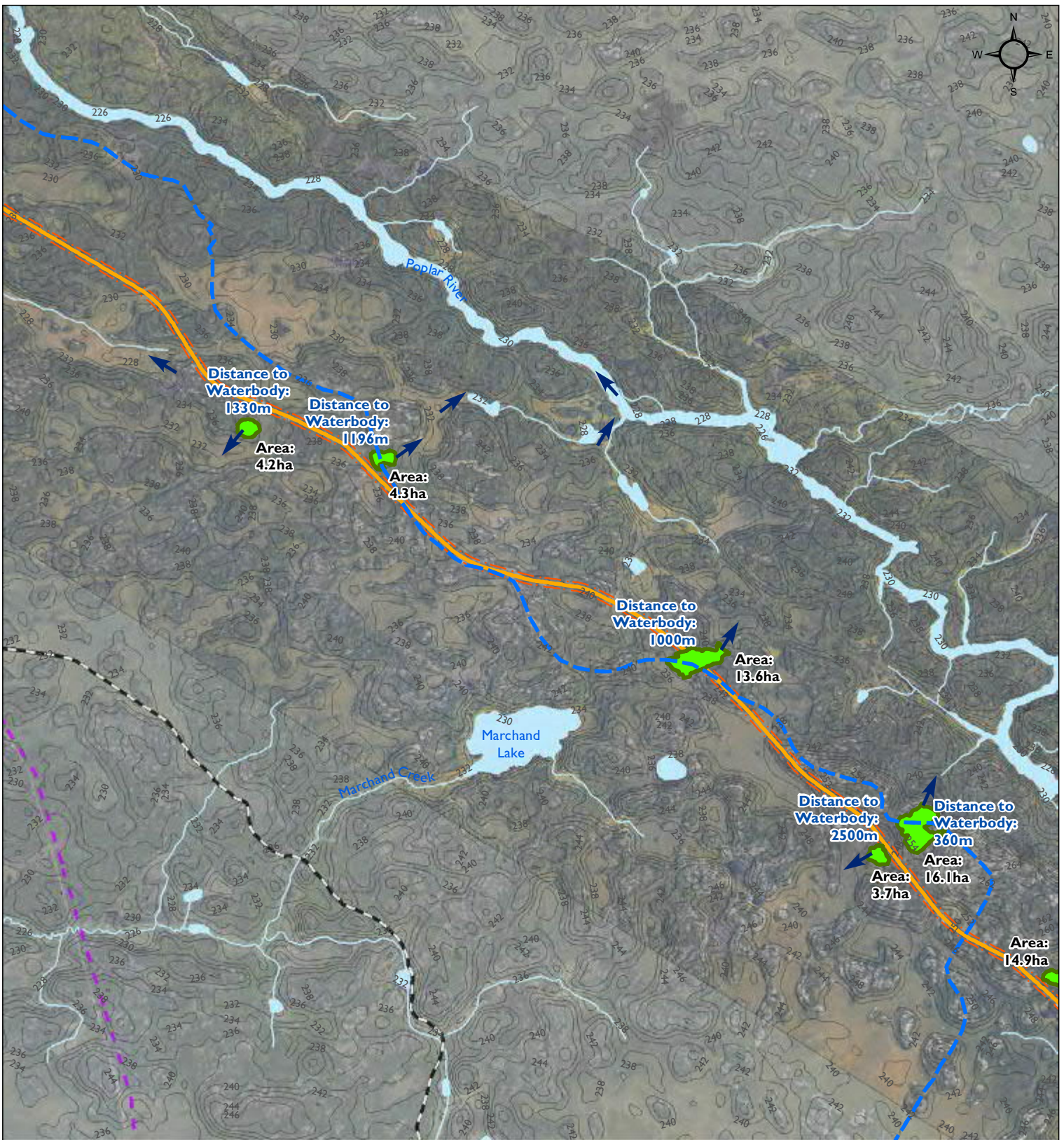
Map Drawing Information:  
 ESRI Base Layers, Province of Manitoba, CanVec, GeoGratis, Dillon Consulting Limited  
 Manitoba Mineral Resources 2015d

Map Created By: ECH  
 Map Checked By: M/G/PS/LD  
 Map Projection: NAD 1983 UTM Zone 14N

DATE: 12/2/2015







Project 4 - All-Season Road Connecting Berens River to Poplar River First Nation

Figure 3-3 Grid 2

Overview of P4 All-Season Road and Quarries

- P4 All-Season Road Alignment
- ➔ Drainage Flow Direction
- P1 All-Season Road (South of Berens to PTH 304) - Under Construction
- Contours
- - - 2013/2014 Manitoba Winter Road
- - - Watersheds Boundary
- - - Transmission Line

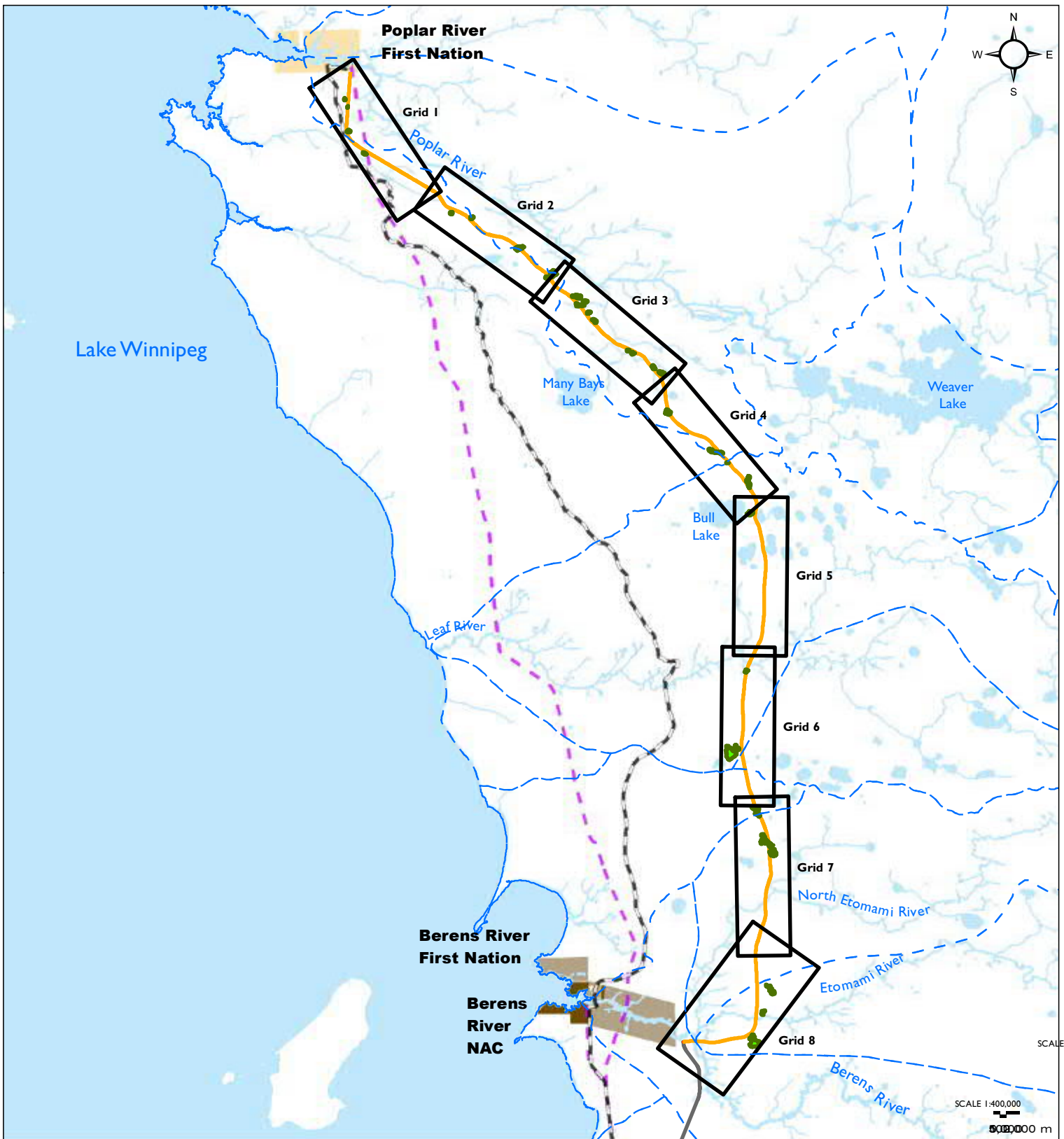
Map Drawing Information:  
ESRI Base Layers, Province of Manitoba, CanVec, GeoGratis, Dillon Consulting Limited  
Manitoba Mineral Resources 2015d

Map Created By: ECH  
Map Checked By: MG/PS/LD  
Map Projection: NAD 1983 UTM Zone 14N

DATE: 12/2/2015








Project 4 - All-Season Road Connecting Berens River to Poplar River First Nation

**Figure 3-3**

**Overview of P4 All-Season Road and Quarries**

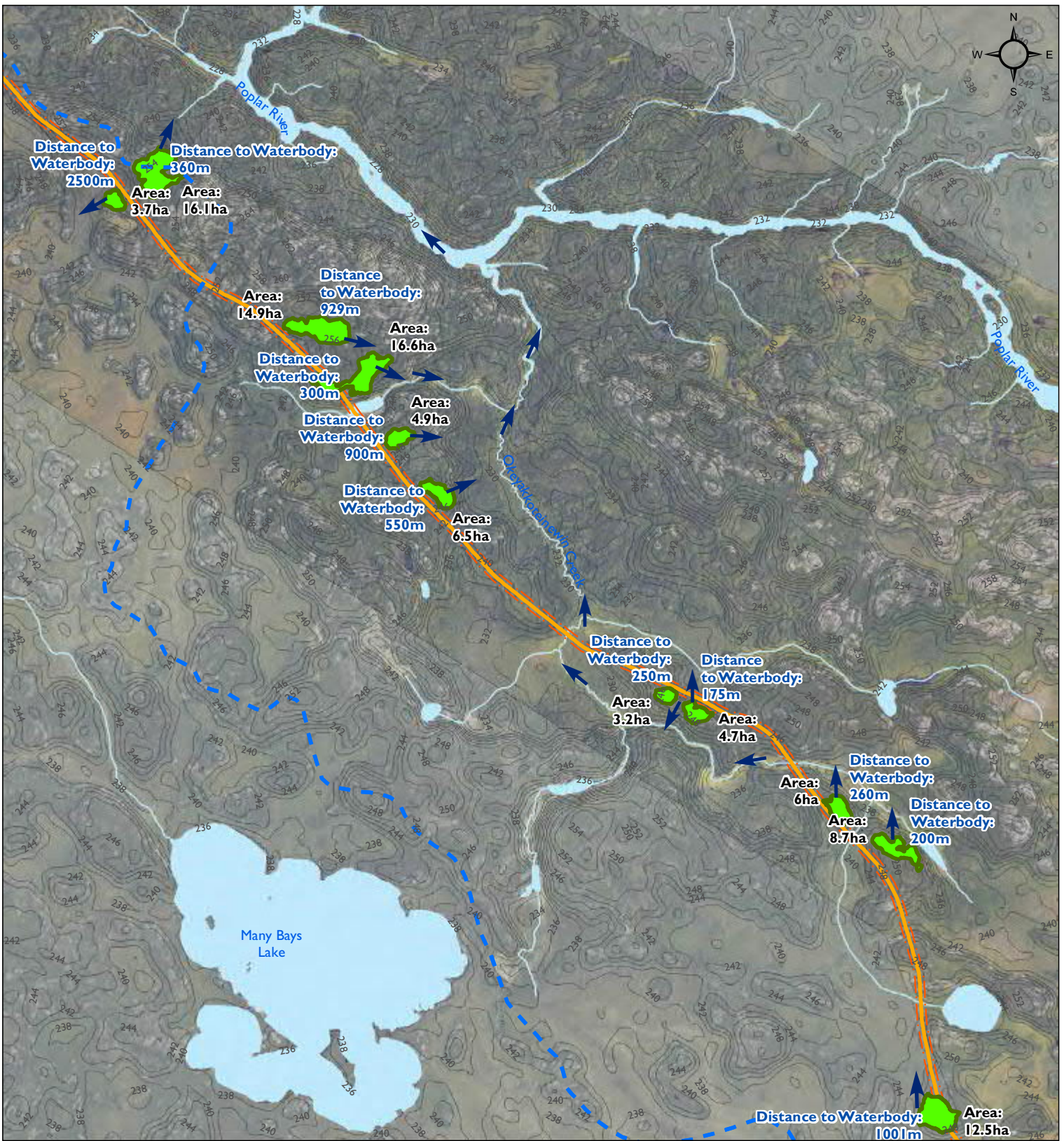
- |  |  |
|--|--|
|  P4 All-Season Road Alignment   |  Grid Extent           |
|  P1 All-Season Road (South of Berens to PTH 304) - Under Construction |  Watersheds Boundary   |
|  2013/2014 Manitoba Winter Road                                       |  P4 Potential Quarries |
|  Transmission Line  |  |

Map Drawing Information:  
 ESRI Base Layers, Province of  
 Manitoba, CanVec, GeoGratis,  
 Dillon Consulting Limited  
 Manitoba Mineral Resources 2015d

Map Created By: ECH  
 Map Checked By: MG/PS/LM  
 Map Projection: NAD 1983 UTM Zone 14N

DATE: 12/2/2015





Project 4 - All-Season Road Connecting Berens River to Poplar River First Nation

Figure 3-3 Grid 3

Overview of P4 All-Season Road and Quarries

- P4 All-Season Road Alignment
- ➔ Drainage Flow Direction
- P1 All-Season Road (South of Berens to PTH 304) - Under Construction
- Contours
- 2013/2014 Manitoba Winter Road
- - - Watersheds Boundary
- Transmission Line

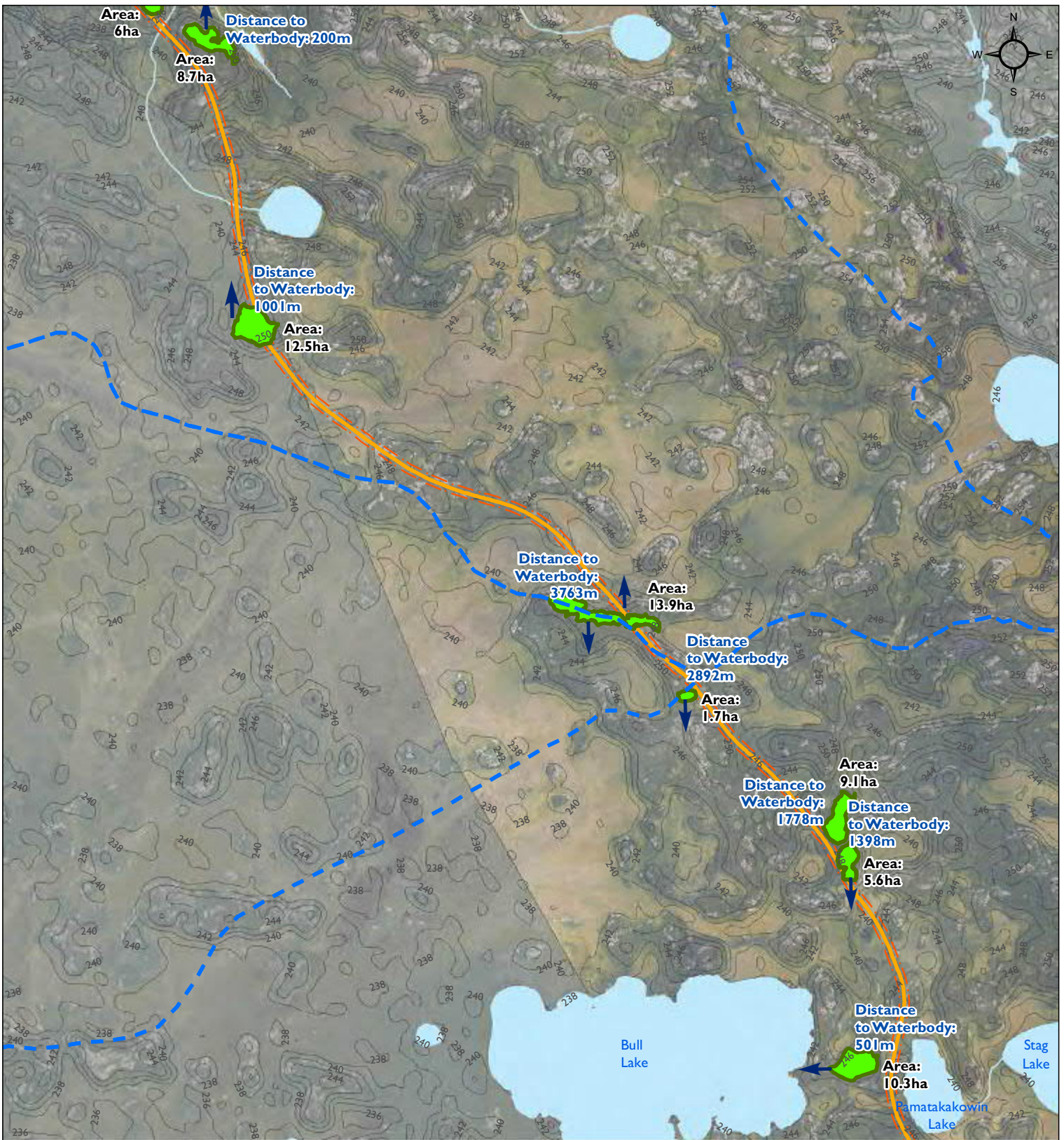
Map Drawing Information:  
 ESRI Base Layers, Province of Manitoba, CanVec, GeoGratis, Dillon Consulting Limited  
 Manitoba Mineral Resources 2015d

Map Created By: ECH  
 Map Checked By: MG/PS/LD  
 Map Projection: NAD 1983 UTM Zone 14N

DATE: 12/2/2015







Project 4 - All-Season Road Connecting Berens River to Poplar River First Nation

Figure 3-3 Grid 4

Overview of P4 All-Season Road and Quarries

- P4 All-Season Road Alignment
- PI All-Season Road (South of Berens to PTH 304) - Under Construction
- 2013/2014 Manitoba Winter Road
- Transmission Line
- ➔ Drainage Flow Direction
- Contours
- - - Watersheds Boundary

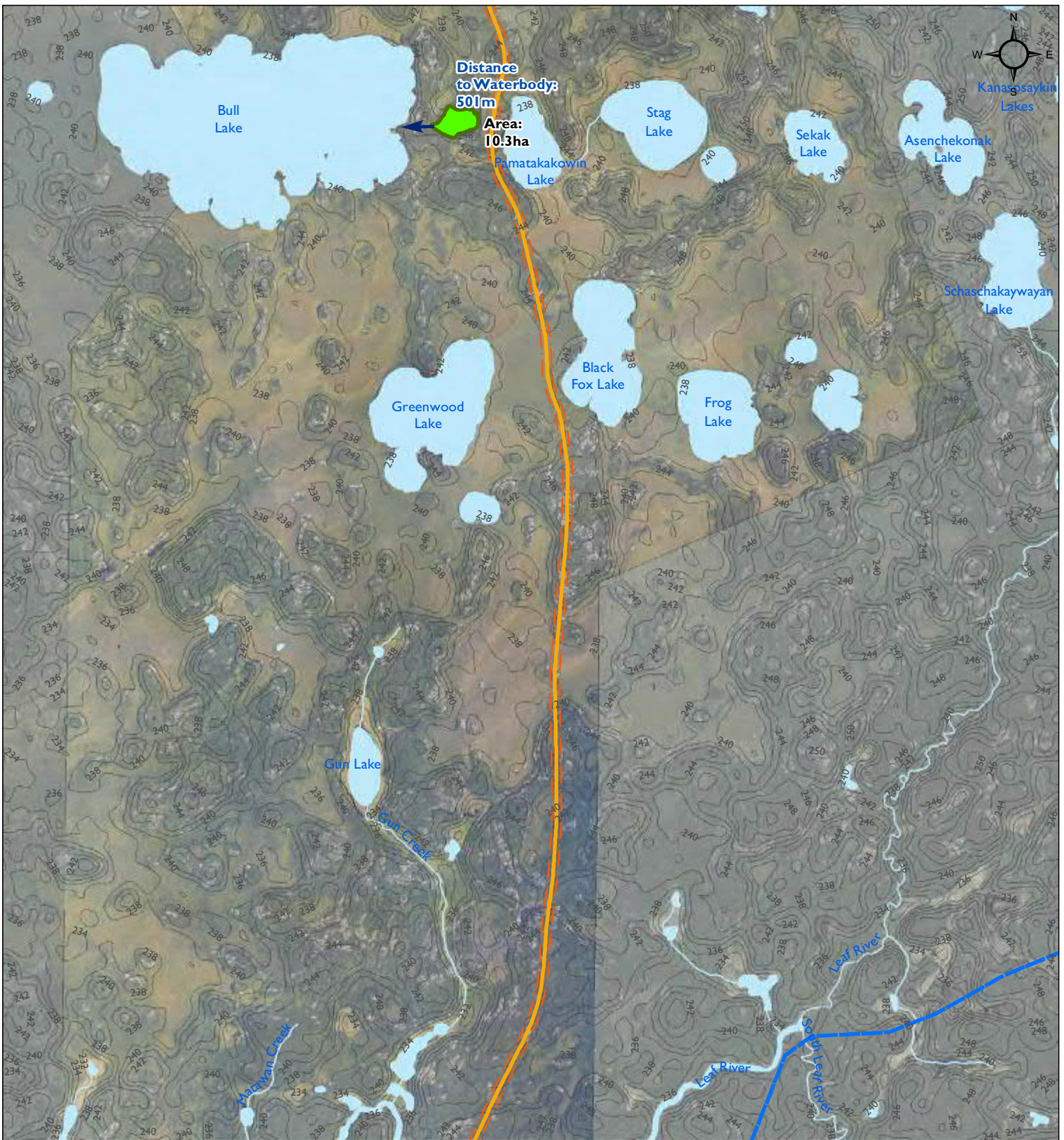
Map Drawing Information:  
 ESRI Base Layers, Province of Manitoba, CanVec, GeoGratis, Dillon Consulting Limited  
 Manitoba Mineral Resources 2015d

Map Created By: ECH  
 Map Checked By: MG/PS/LD  
 Map Projection: NAD 1983 UTM Zone 14N

DATE: 12/2/2015







Project 4 - All-Season Road Connecting Berens River to Poplar River First Nation

Figure 3-3 Grid 5

Overview of P4 All-Season Road and Quarries

- P4 All-Season Road Alignment
- ➔ Drainage Flow Direction
- P1 All-Season Road (South of Berens to PTH 304) - Under Construction
- Contours
- 2013/2014 Manitoba Winter Road
- Watersheds Boundary
- Transmission Line

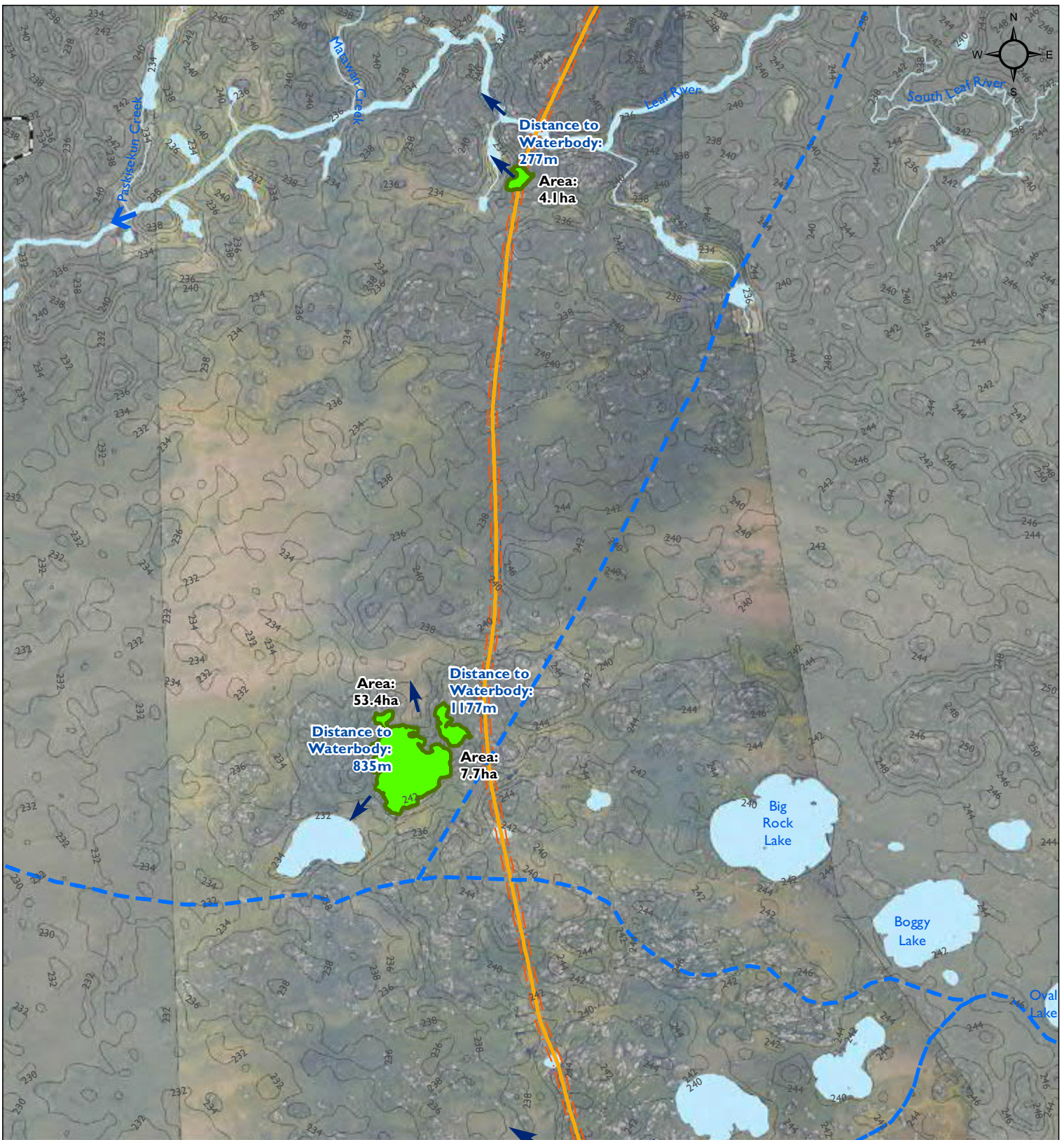
Map Drawing Information:  
 ESRI Base Layers, Province of Manitoba, CanVec, GeoGratis, Dillon Consulting Limited  
 Manitoba Mineral Resources 2015d

Map Created By: ECH  
 Map Checked By: MGP/PS/LD  
 Map Projection: NAD 1983 UTM Zone 14N

DATE: 12/2/2015







Project 4 - All-Season Road Connecting Berens River to Poplar River First Nation

Figure 3-3 Grid 6

Overview of P4 All-Season Road and Quarries

- P4 All-Season Road Alignment
- ➔ Drainage Flow Direction
- P1 All-Season Road (South of Berens to PTH 304) - Under Construction
- 2013/2014 Manitoba Winter Road
- Transmission Line
- Contours
- Watersheds Boundary

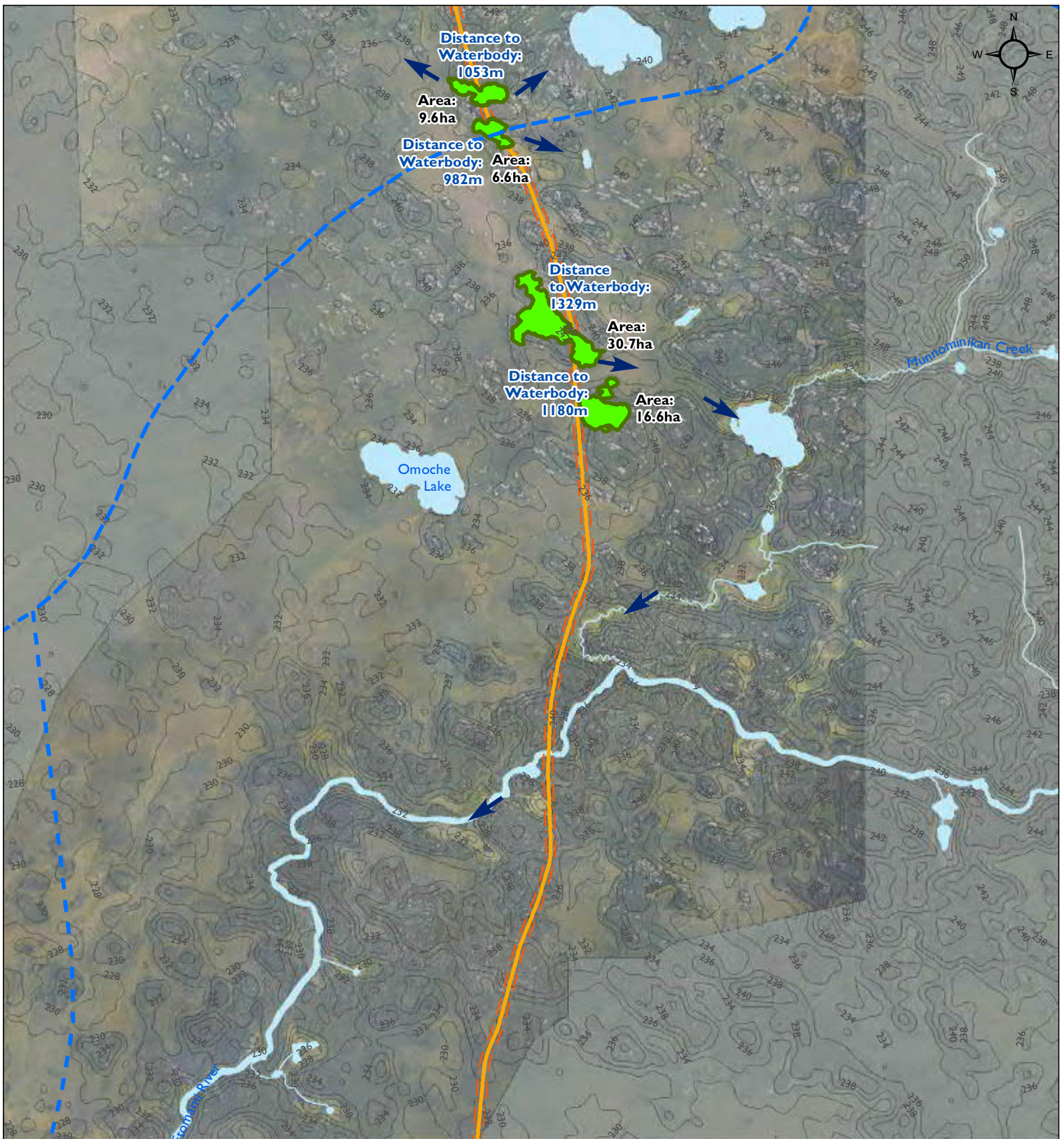
Map Drawing Information:  
 ESRI Base Layers, Province of Manitoba, CanVec, GeoGratis, Dillon Consulting Limited  
 Manitoba Mineral Resources 2015d

Map Created By: ECH  
 Map Checked By: MG/PS/LD  
 Map Projection: NAD 1983 UTM Zone 14N

DATE: 12/2/2015







Project 4 - All-Season Road Connecting Berens River to Poplar River First Nation

Figure 3-3 Grid 7

Overview of P4 All-Season Road and Quarries

- P4 All-Season Road Alignment
- ➔ Drainage Flow Direction
- P1 All-Season Road (South of Berens to PTH 304) - Under Construction
- Contours
- 2013/2014 Manitoba Winter Road
- - - Watersheds Boundary
- - - Transmission Line

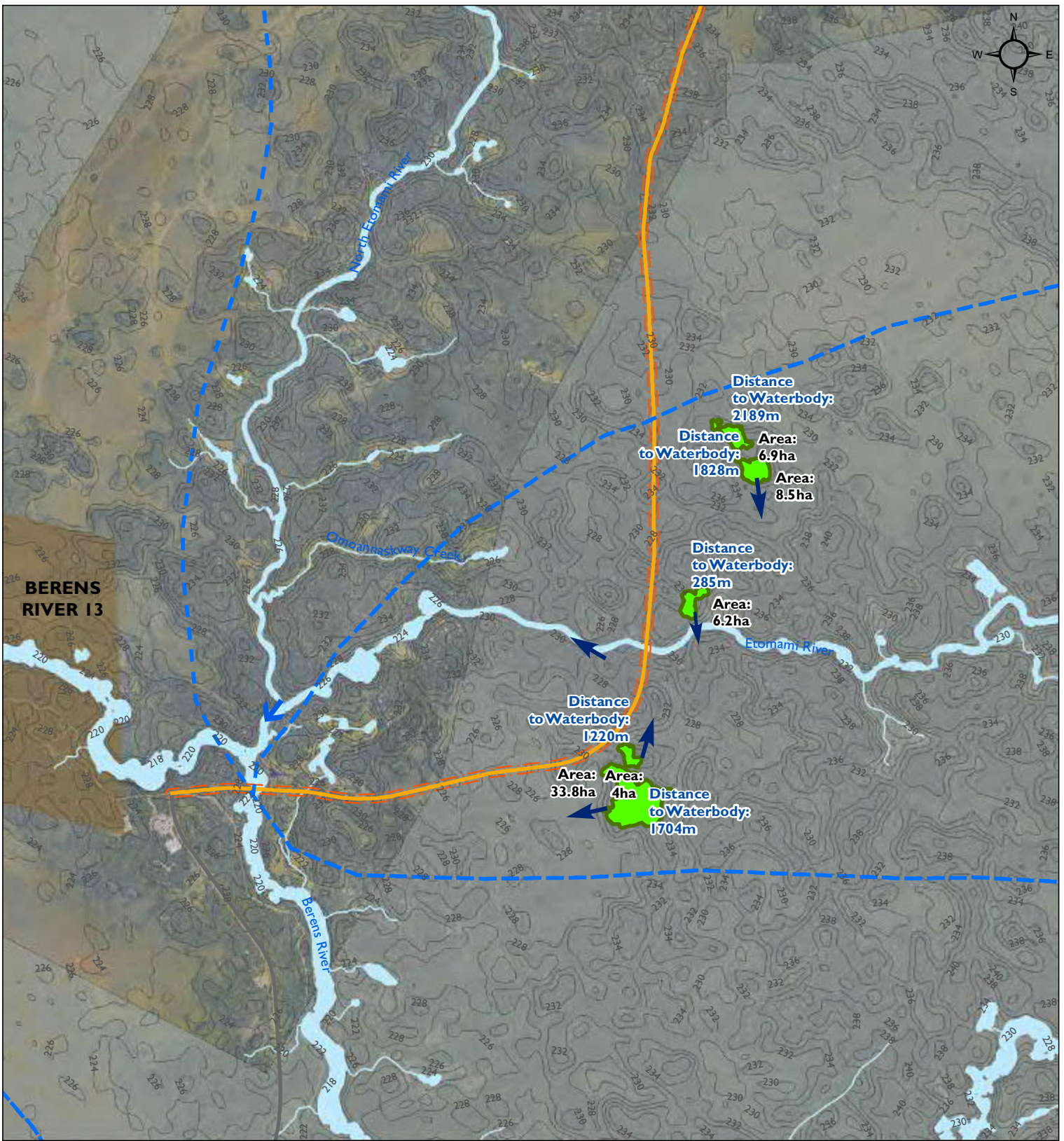
Map Drawing Information:  
 ESRI Base Layers, Province of  
 Manitoba, CanVec, GeoGratis,  
 Dillon Consulting Limited  
 Manitoba Mineral Resources 2015d

Map Created By: ECH  
 Map Checked By: MG/PS/LD  
 Map Projection: NAD 1983 UTM Zone 14N

DATE: 12/2/2015







Project 4 - All-Season Road Connecting Berens River to Poplar River First Nation

Figure 3-3 Grid 8

Overview of P4 All-Season Road and Quarries

- P4 All-Season Road Alignment
- ➔ Drainage Flow Direction
- P1 All-Season Road (South of Berens to PTH 304) - Under Construction
- Contours
- 2013/2014 Manitoba Winter Road
- - - Watersheds Boundary
- Transmission Line

Map Drawing Information:  
 ESRI Base Layers, Province of Manitoba, CanVec, GeoGratis, Dillon Consulting Limited  
 Manitoba Mineral Resources 2015d

Map Created By: ECH  
 Map Checked By: MG/PS/LD  
 Map Projection: NAD 1983 UTM Zone 14N

DATE: 12/2/2015

