

# Contrecoeur Port Terminal Expansion Project

CONSULTATION ON THE DRAFT ENVIRONMENTAL  
ASSESSMENT REPORT



Impact Assessment  
Agency of Canada

Agence d'évaluation  
d'impact du Canada

Canada 

# Plan of the presentation

---

- Objectives of the consultation sessions
- Federal Environmental Assessment Process under the Canadian Environmental Assessment Act (CEAA 2012)
- Themes - Key Findings and Mitigation Measures
- Next Steps



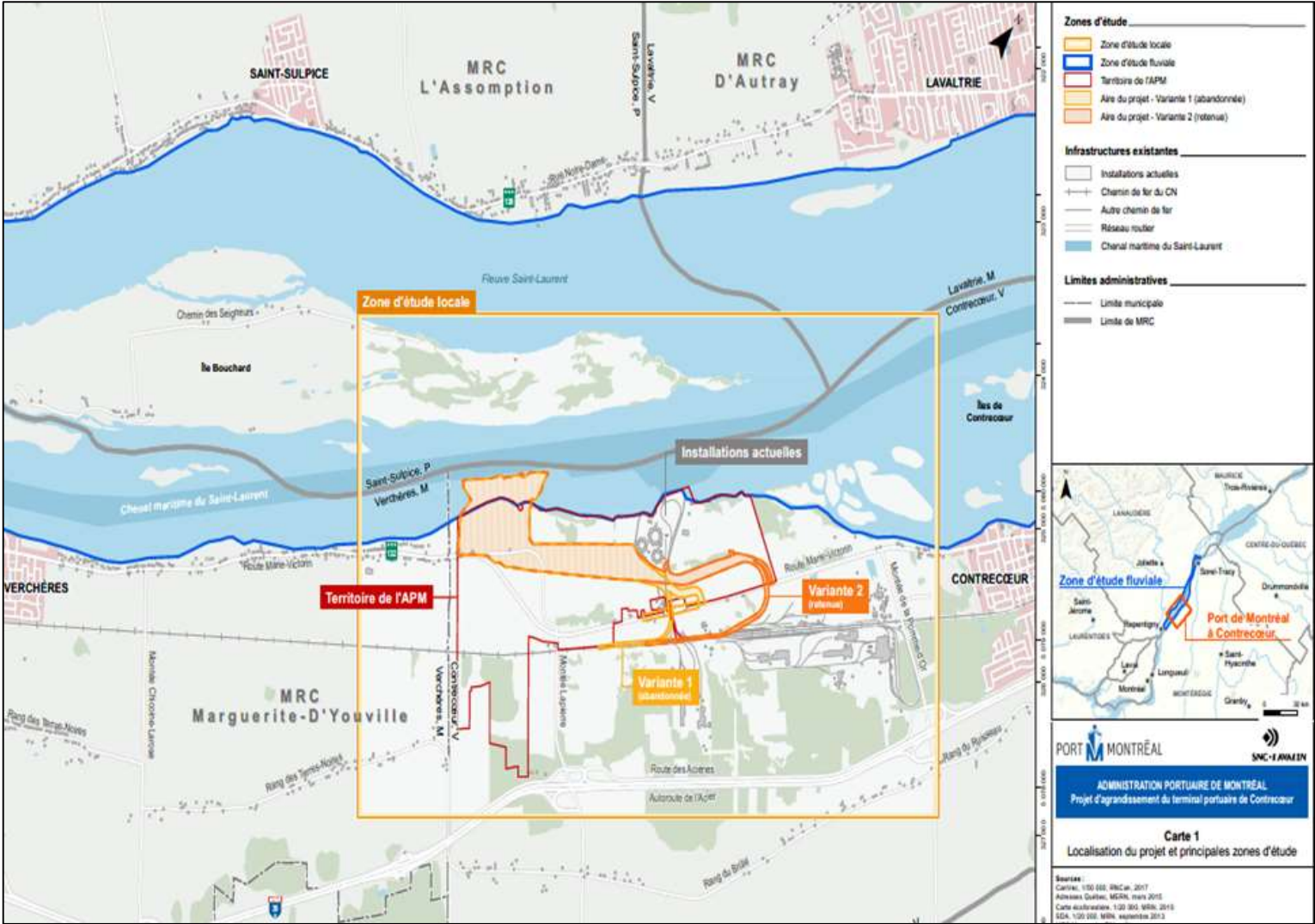
# Session Objectives

---

- Inform the public of the :
  - Environmental Assessment Findings
  - Potential conditions
- Provide an opportunity for the public to ask questions to:
  - The Agency
  - The Expert Panel
- Understand the public's concerns and comments on:
  - The Draft Environmental Assessment Report
  - The Potential Conditions document.



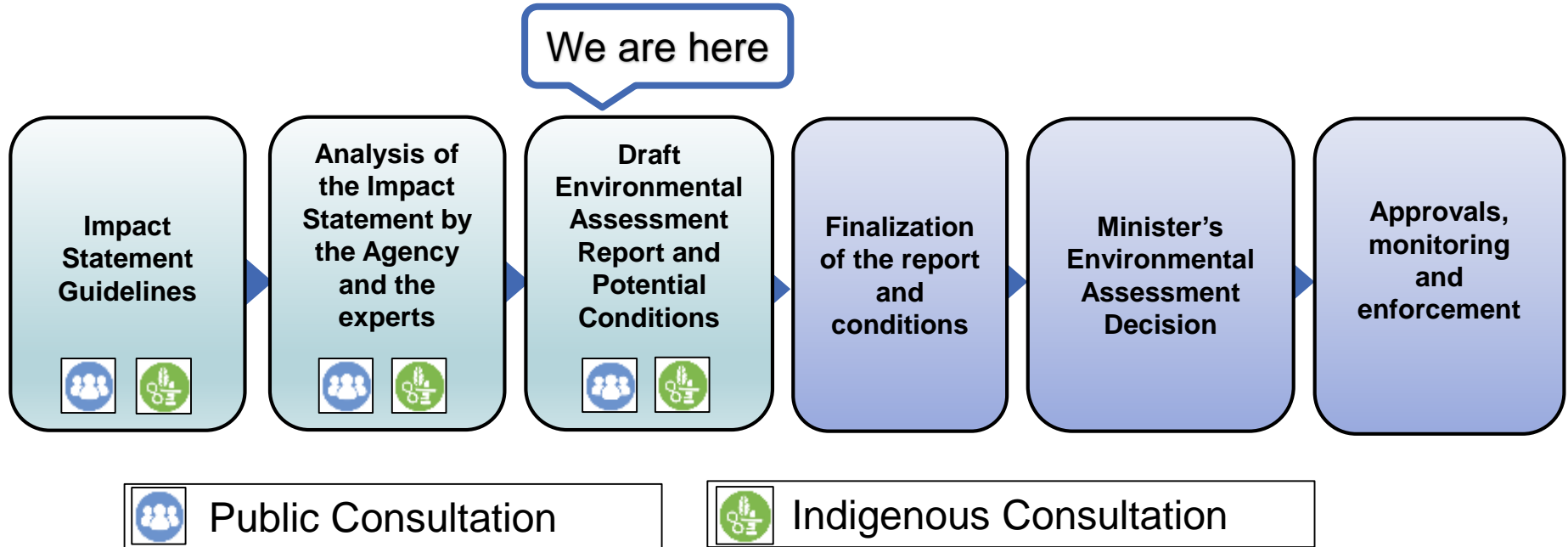
# Location of the Project



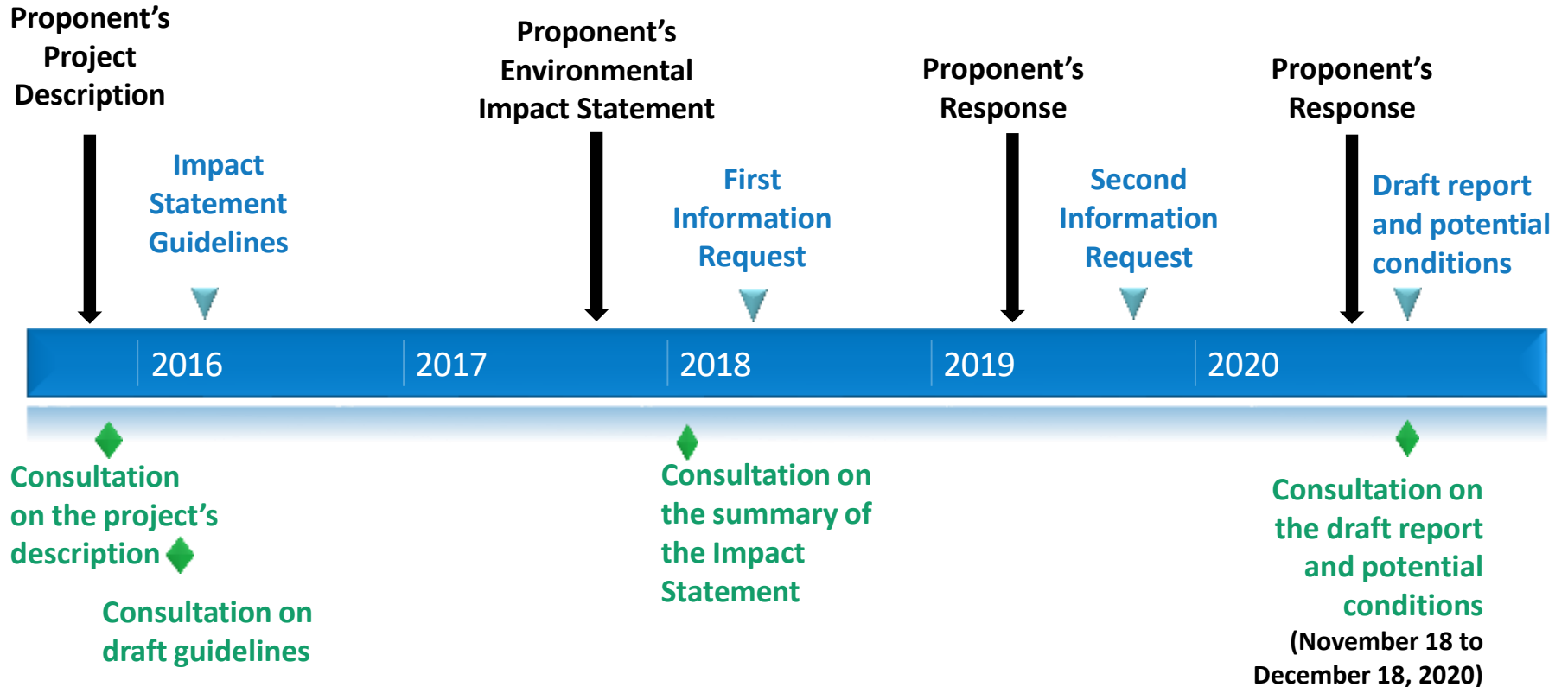




# Environmental Assessment Process



# Timeline - Key Milestones



# Contents of the Agency's Draft Report

Transboundary effects- Greenhouse gas emissions	Wetlands	Fish and fish habitat
Birds and bird habitat	Other special status species and their habitat	Human Health
Socio-economic conditions	First Nations: Current Use of Land and Resources	Natural and cultural heritage
Effects of accidents and malfunctions	Cumulative Environmental Effects	Effects of the environment on the project
Impact on Aboriginal and Treaty Rights on First Nations		





# Themes and Departments Present

## **Special status wildlife species (mainly Copper Redhorse, Bank Swallow and Western Chorus Frog)**

- Environment and Climate Change Canada
- Fisheries and Oceans Canada
- Health Canada
- Quebec's Ministère de l'Environnement et de la Lutte contre les changements climatiques
- Transport Canada

## **Increase in marine, road and rail transportation**

- Canadian Coast Guard
- Environment and Climate Change Canada
- Health Canada
- Laurentian Pilotage Authority
- Quebec's Ministère de l'Environnement et de la Lutte contre les changements climatiques
- Transport Canada



# Special Status Species - Potential Effects

---

- **Fish, including copper redhorse**
  - Loss of fish habitat, destruction of aquatic grass beds, disturbance of feeding areas for copper redhorse
  - Change in water quality from construction work, including drainage and dredging
  - Increased underwater noise
- **Birds, including the Bank Swallow**
  - Loss of habitat (nesting in particular), risk of collision (vehicles) and disturbance (noise, human presence)
- **Other special status species, including the Western Chorus Frog**
  - Loss (other species than the western chorus frog) and change in habitats
  - Risk of injury and death (rail and road traffic)
  - Disturbance (lighting, noise)



# Special Status Species - Key Mitigation Measures

The Agency considered: the measures proposed by the proponent, the opinions of government experts and the comments received from the First Nations consulted and the public.

Examples of measures :

<b>Copper Redhorse</b>	<ul style="list-style-type: none"><li>• Compensation plan for the loss of aquatic grass beds (critical feeding habitat of adult copper redhorse)</li><li>• Measures to limit emissions of suspended solids in the water (dredging method, dredging period, management of dredged sediments and water)</li><li>• Monitoring of water quality, grass beds, hydrodynamics and erosion</li></ul>
<b>Bank Swallow</b>	<ul style="list-style-type: none"><li>• Construction of six artificial nesting boxes (2019 and 2020) to compensate for the loss of breeding sites at three colonies</li><li>• Maintenance of artificial nesting boxes</li><li>• Measures to avoid nesting of the species in the work area</li></ul>
<b>Western Chorus Frog</b>	<ul style="list-style-type: none"><li>• Detour fence along sections of road (Montée Lapierre and Route 132)</li><li>• Annual monitoring of hydroperiod and water quality at breeding sites</li><li>• Annual monitoring of breeding activities and habitat quality (MPA territory)</li></ul>



# Special Status Species - Residual effects

---

The Agency concludes that, taking into account mitigation and follow-up measures, **the project** is not likely to cause significant adverse environmental effects on :

- Fish and fish habitat, including the **copper redhorse**
- Birds and bird habitat, including the **bank swallow**
- Special status species, including the **western chorus frog**

Cumulative effects:

- **Copper redhorse:** not significant
- **Western Chorus Frog:** not significant



# Marine, Rail and Road Transportation - Project Scope

---

- Rail and road transportation
  - In the project area
- Marine shipping
  - Navigation associated with the project taking place in the Montreal Port Authority's area of jurisdiction  
(Contrecoeur to Sorel)



# Marine, Rail and Road Transportation - Potential Effects

---

- All transport modes
  - Greenhouse gas emissions, air quality
  - Disturbance of recreational activities (fishing, boating, cycling, quad, snowmobiling)
  - Safety (collision), accidents and malfunctions
  - Disturbance by noise (humans and wildlife)
  - Natural heritage (landscape)
  - Wildlife species (including the western chorus frogs): risk of injury and mortality
- Commercial navigation
  - Erosion, invasive exotic species (e.g. zebra mussels)
- Road and rail traffic
  - Reduced availability of leased land for agricultural activities
  - Temporary access restriction (train traffic, trucking for dredged sediments)





# Marine, Rail and Road Transportation - Key Mitigation Measures

---

All transport modes	<ul style="list-style-type: none"><li>• Air and noise quality monitoring</li><li>• Communication plan (train and ship schedules, possible hindrances, results of air quality and noise monitoring, accidents and malfunctions)</li><li>• Protocol for receiving complaints</li><li>• Intervention plan in case of accidents and malfunctions</li></ul>
Commercial navigation	<ul style="list-style-type: none"><li>• Onshore power supply</li><li>• Delimitation of safety perimeters (works and loading area)</li><li>• Raise awareness among vessel operators of voluntary speed reductions</li></ul>
Rail traffic	<ul style="list-style-type: none"><li>• Encourage train operators to use<ul style="list-style-type: none"><li>• locomotives with lower emissions (multi-generators and group 4)</li><li>• automatic stop and restart devices when trains are equipped with them</li></ul></li><li>• Speed limitation</li></ul>
Road traffic	<ul style="list-style-type: none"><li>• Speed limits, vehicle selection and maintenance (emissions and noise), adapt site layout to limit travel time</li><li>• Participation in the implementation of any measures related to road safety on adjacent roads (signs, traffic control person)</li><li>• Bypass fence (western chorus frog)</li></ul>

# Marine, Rail and Road Transportation - Residual Effects

---

The Agency concludes that, taking into account mitigation and follow-up measures, the project is not likely to cause significant adverse environmental effects:

- On socio-economic conditions (fishing, boating, cycling, quad, accessibility to the city)
- On human health (including air quality and noise)
- On greenhouse gases (transboundary effects)
- In connection with accidents and malfunctions
- On fish, birds and special status species and their habitat



# Potential Conditions Document

---

- Enforceable conditions to avoid significant environmental effects;
- Requirements for consultation with potentially affected parties and First Nations;
- Requirements for requested follow-up programs, including the filing of an annual report to the Agency;
- Annual reports are made public on the Canadian Impact Assessment Registry;
- Requirement for the proponent to make annual reports available on its website.



# Public consultation

---

- Public consultation period from **November 18 to December 18, 2020**
- The Agency welcomes your comments on the draft report and potential conditions.
- Submit your comments online, through the :

Canadian Impact Assessment Registry :

[Canada.ca/ciar](https://Canada.ca/ciar) (Registry number 80116)



# Next Steps in the Environmental Assessment Process

---

- Analysis of comments received from First Nations and the public
- Preparation of final versions
  - Environmental Assessment Report
  - Potential Conditions document
- Send to Minister of Environment and Climate Change for decision
- Minister's decision
  - Whether the project is likely to cause significant adverse environmental effects.
  - Referral to the Governor in Council in the case of significant adverse effects.



# Thank you for your attention

