



## **Appendix B.8**

Final – 2017 Geotechnical Hydraulic Conductivity Data,  
Golder Associates

## **B.9 2017 GEOTECHNICAL HYDRAULIC CONDUCTIVITY DATA SUMMARY**

Figure B.1 – 2017 Geotechnical Borehole Locations

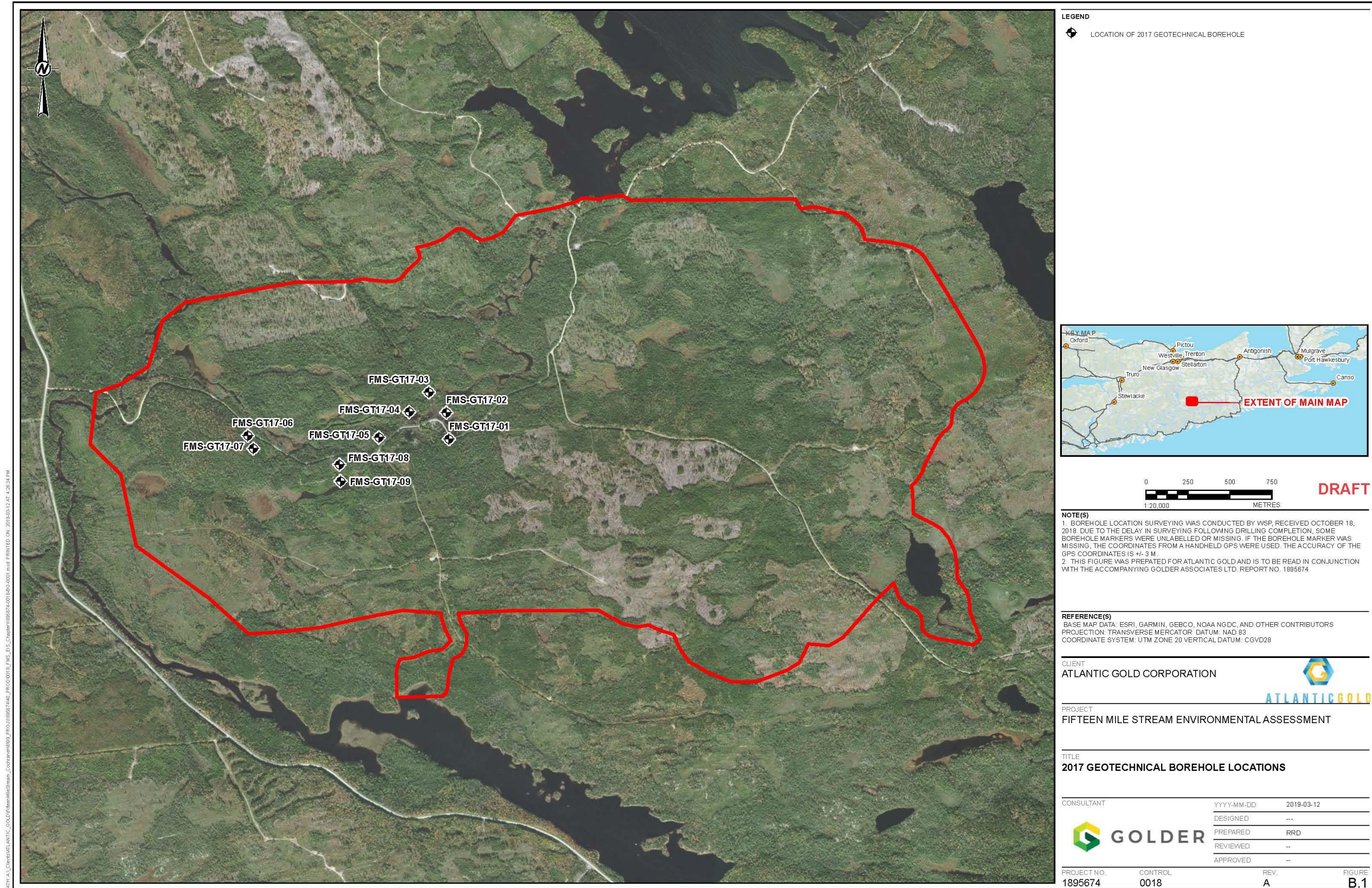
Figure B.2 – Coordinate Definition

Figure B.3 – Hydraulic Conductivity Testing Results at Fifteen Mile Stream – Plan View

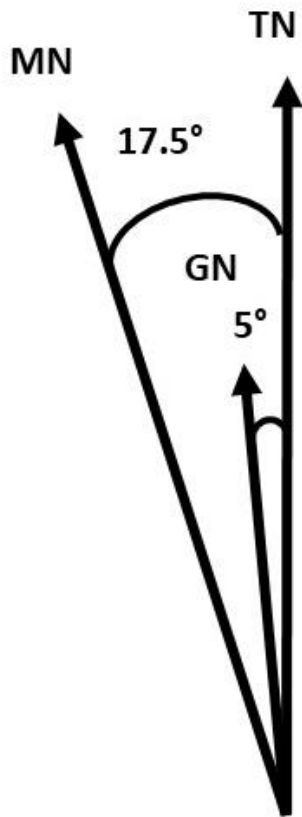
Figure B.4 – Hydraulic Conductivity Testing Results at Fifteen Mile Steam – Geological Interpretation

Figures B.5 to B.10 – Cross-section for each borehole









**Minegrid to NAD83 shift**

Easting Shift: 525045.7 m

Northing Shift: 4987438.7 m

Elevation Shift: 0 m

Rotation: 5.2 degree west

**Legend**

MN – Magnetic North

TN – True North

GN – Local Grid North

Figure B.2: Coordinates Definition at Fifteen Mile Stream

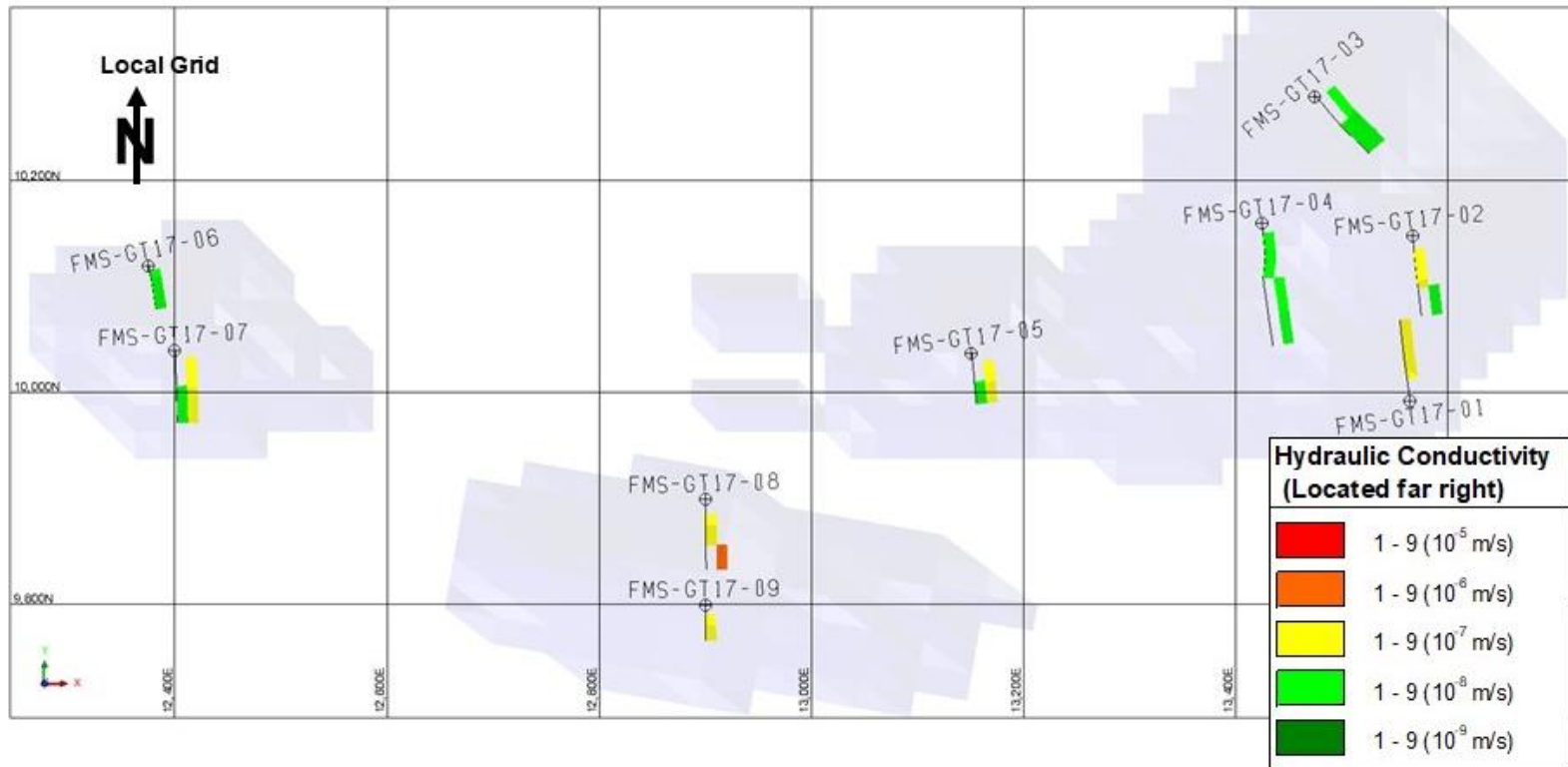
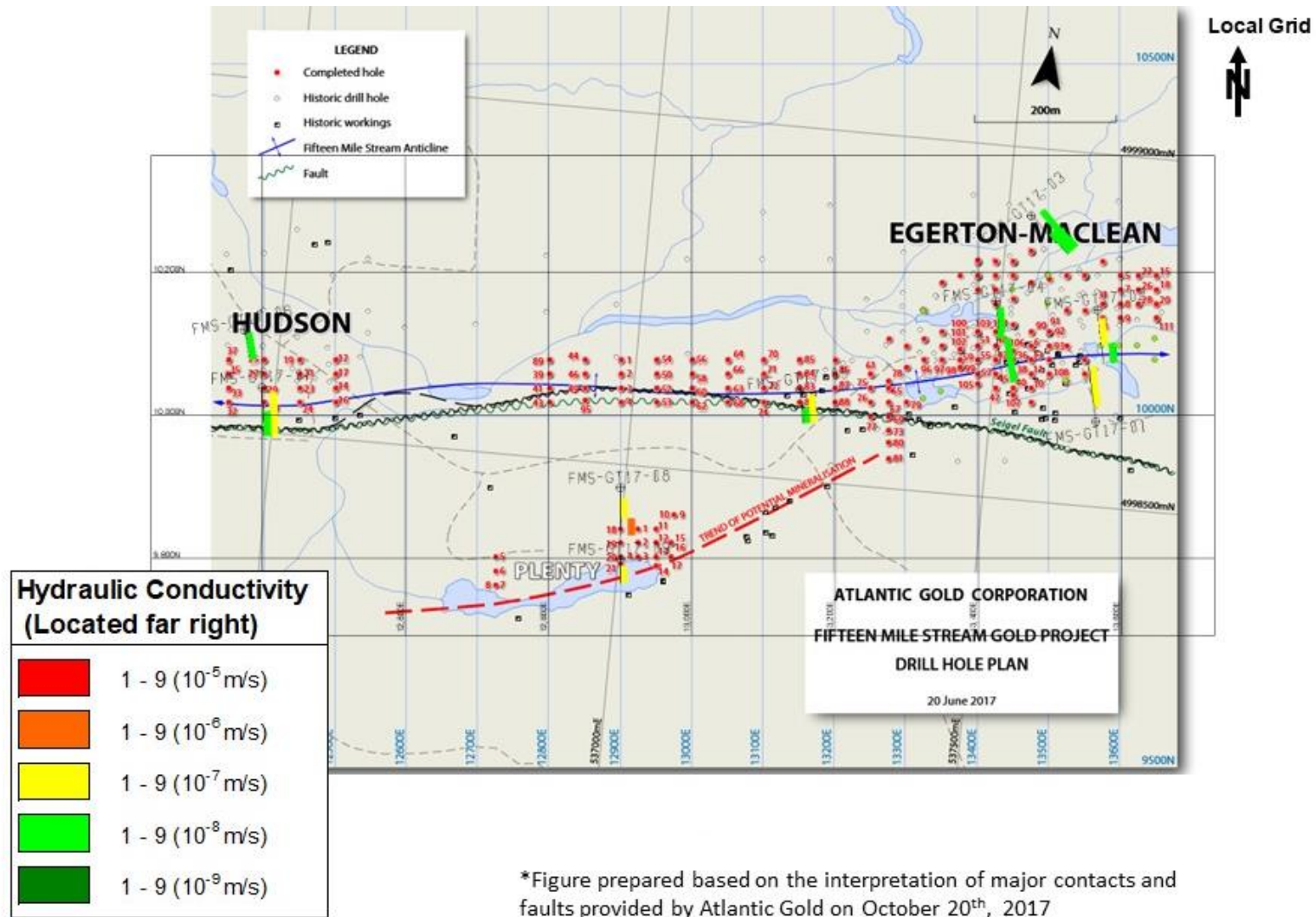


Figure B.3: Hydraulic Conductivity at Fifteen Mile Stream



\*Figure prepared based on the interpretation of major contacts and faults provided by Atlantic Gold on October 20<sup>th</sup>, 2017

Figure B.4: Hydraulic Conductivity Testing at Fifteen Mile Stream – Geological Interpretation

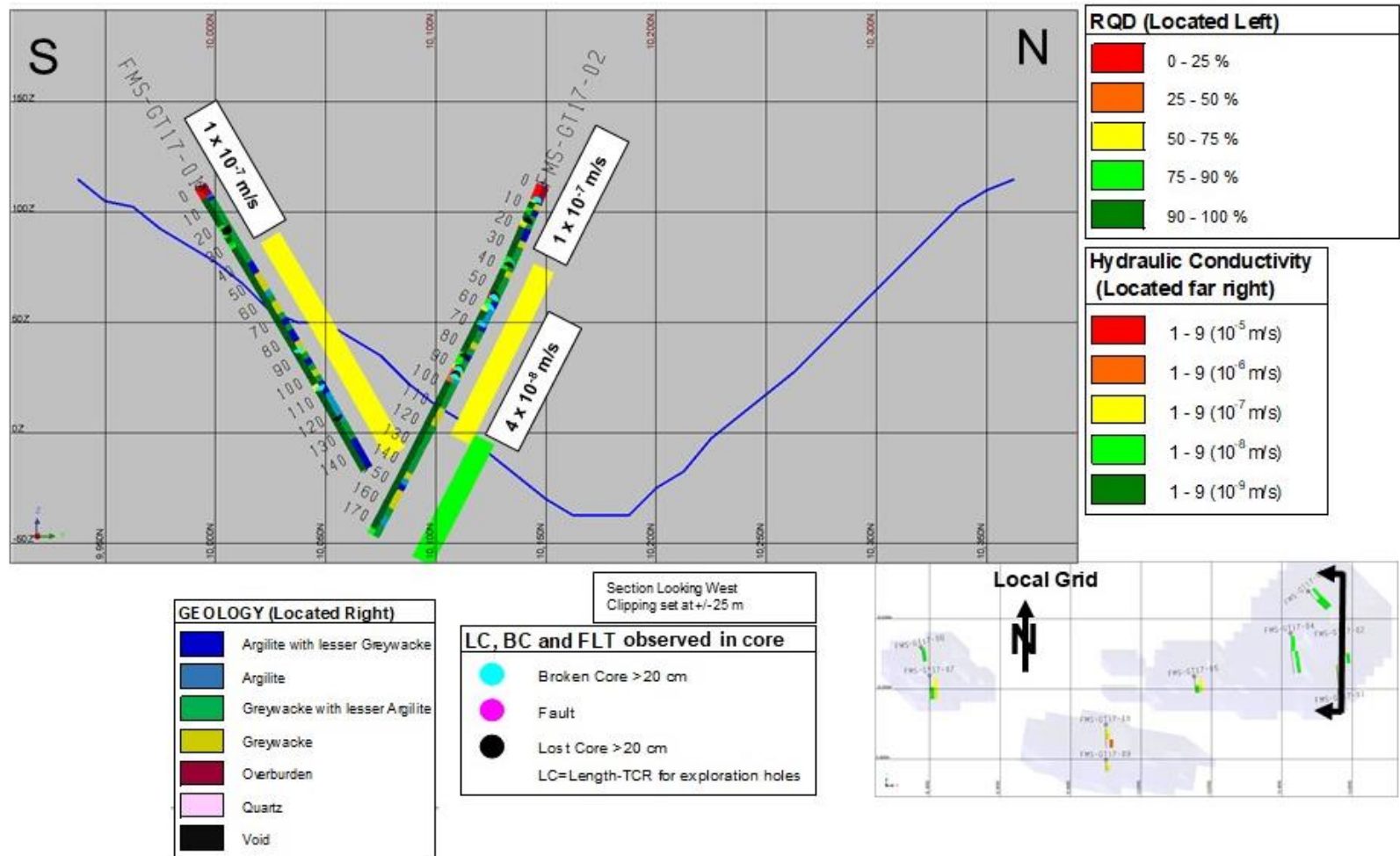


Figure B.5: Cross-section – FMS-GT17-01 and FMS-GT17-02

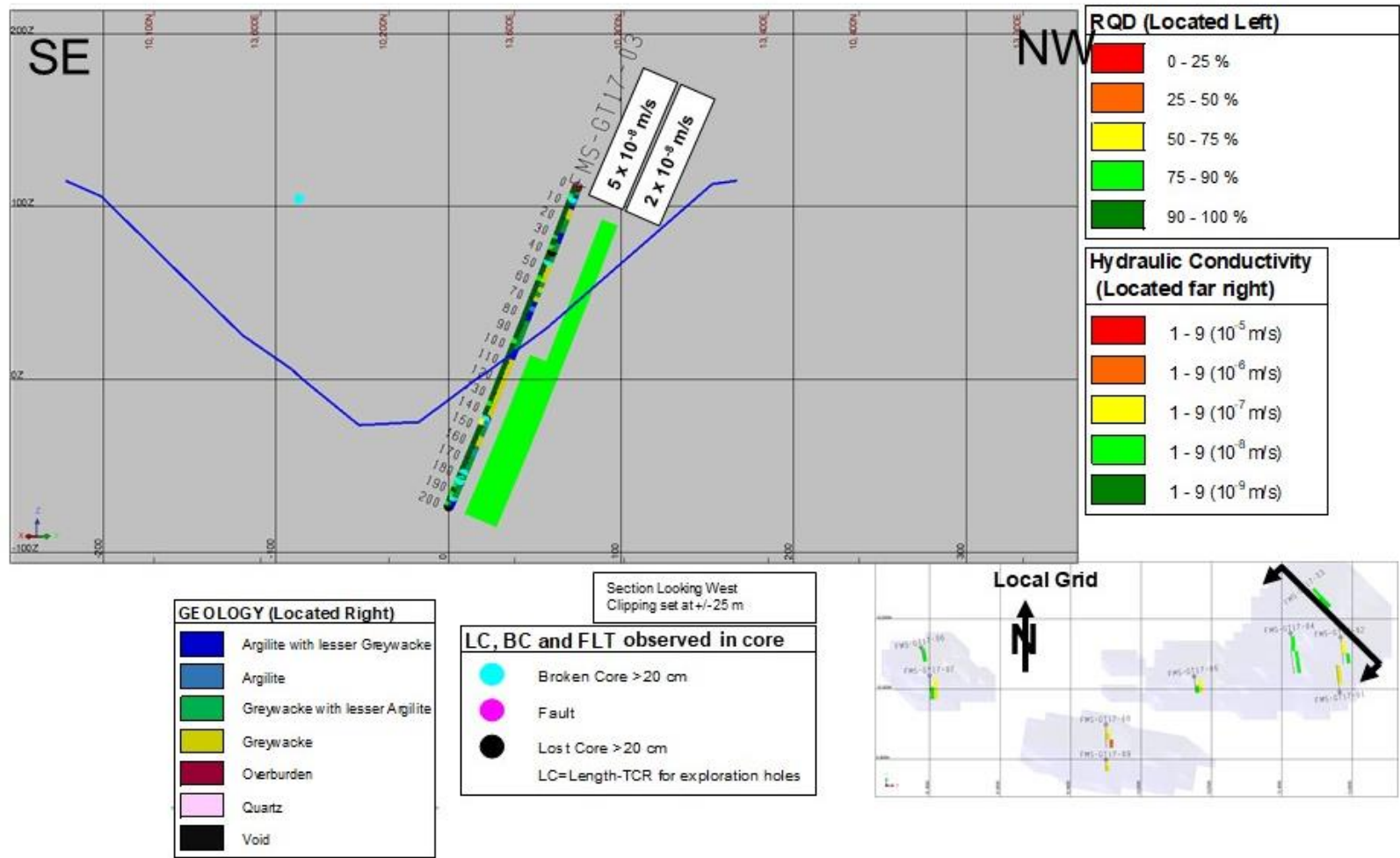


Figure B.6: Cross-section – FMS-GT17-03



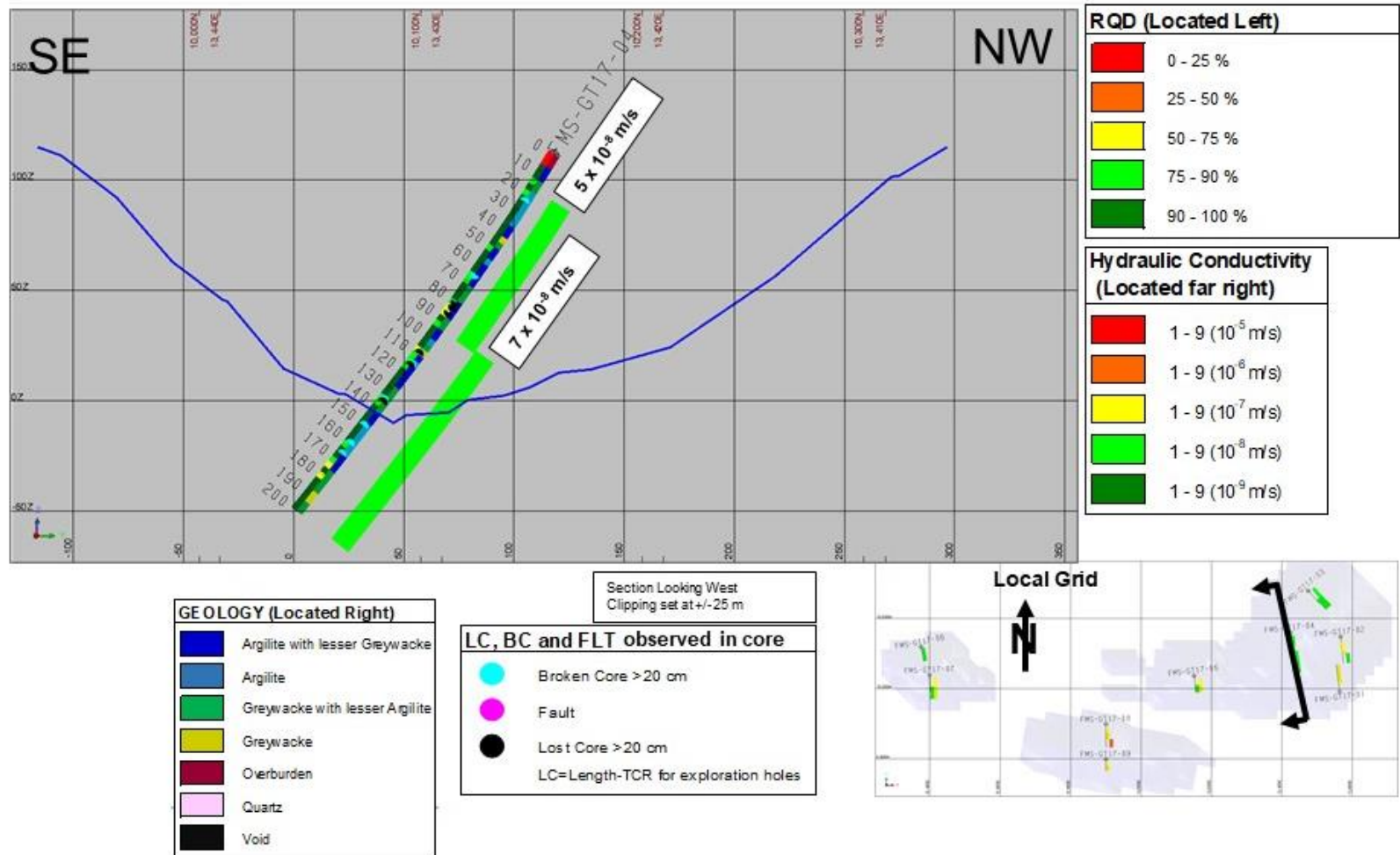


Figure B.7: Cross-section – FMS-GT17-04

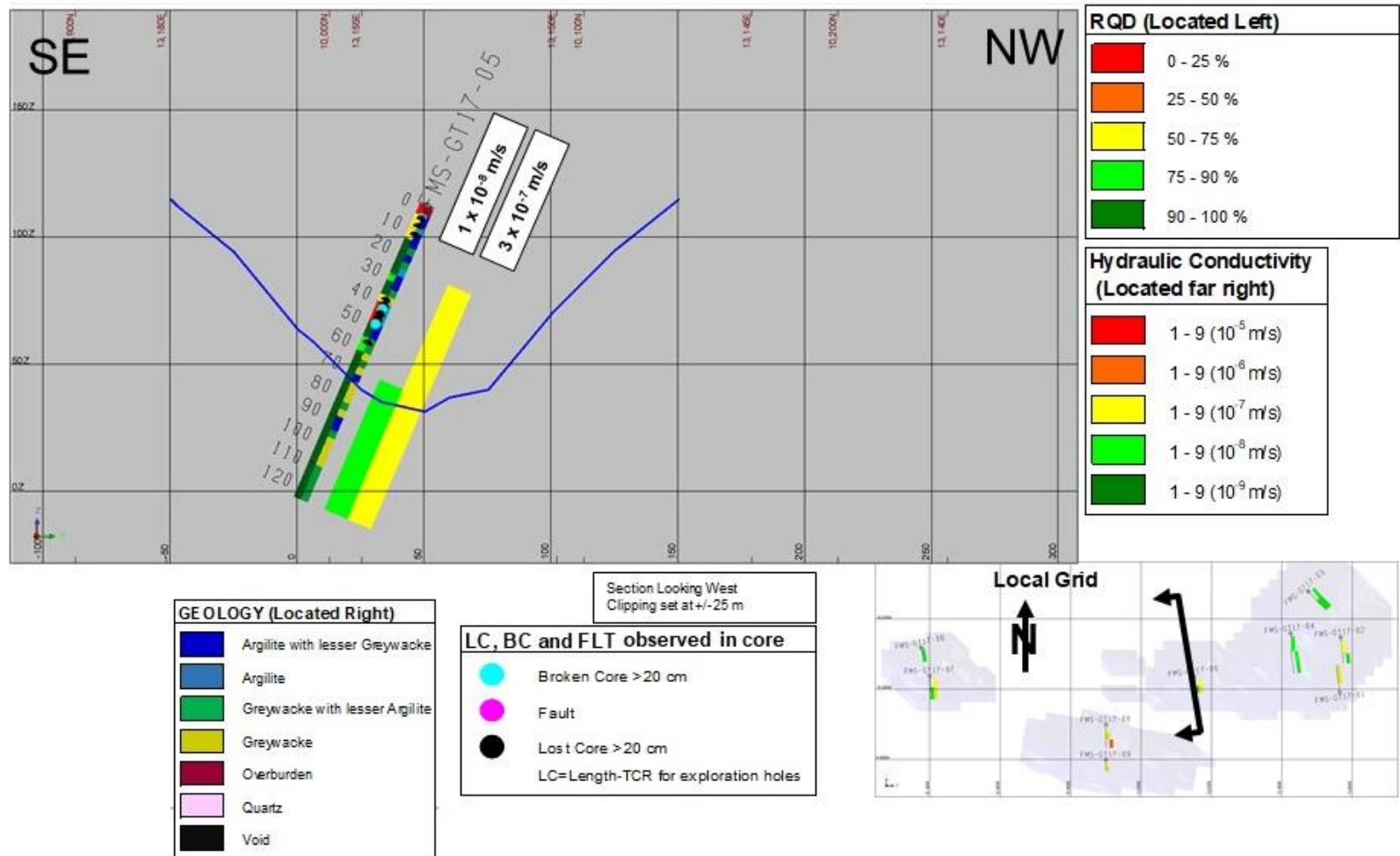


Figure B.8: Cross-section – FMS-GT17-05

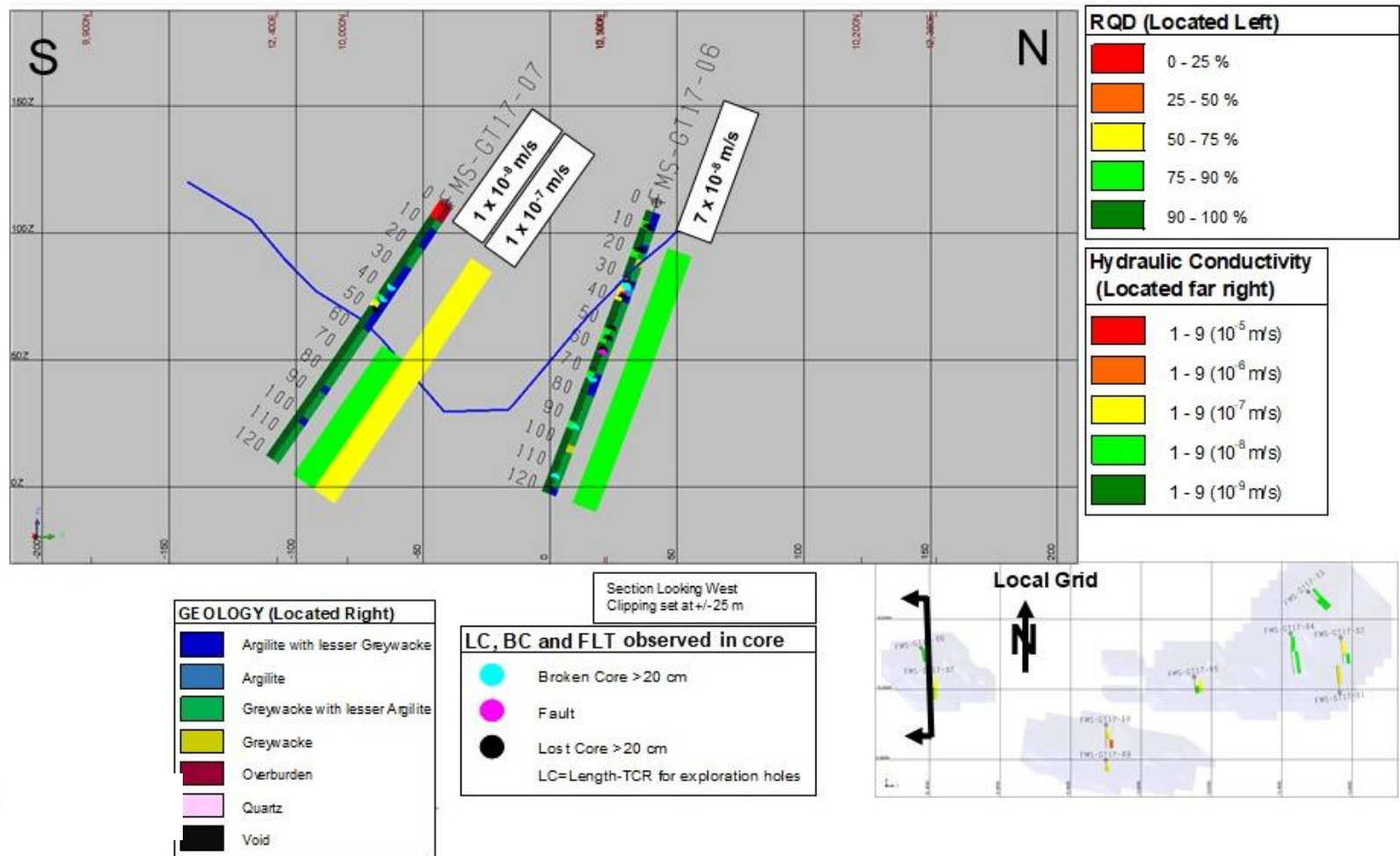


Figure B.9: Cross-section – FMS-GT17-06 and FMS-GT17-07



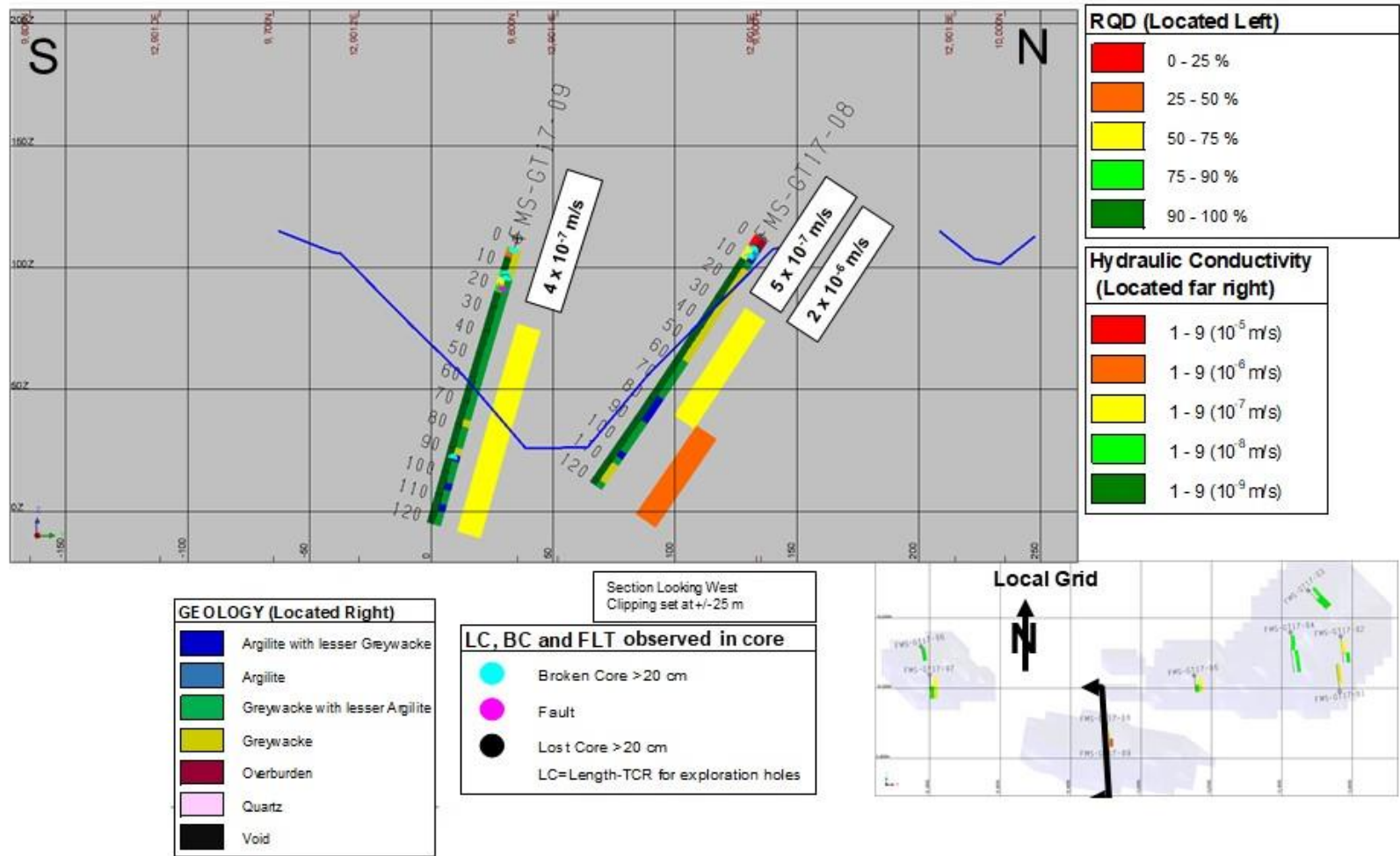


Figure B.10: Cross-section – FMS-GT17-08 and FMS-GT17-09