

Regional Assessment in the Ring of Fire Area

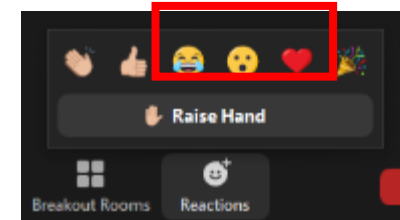
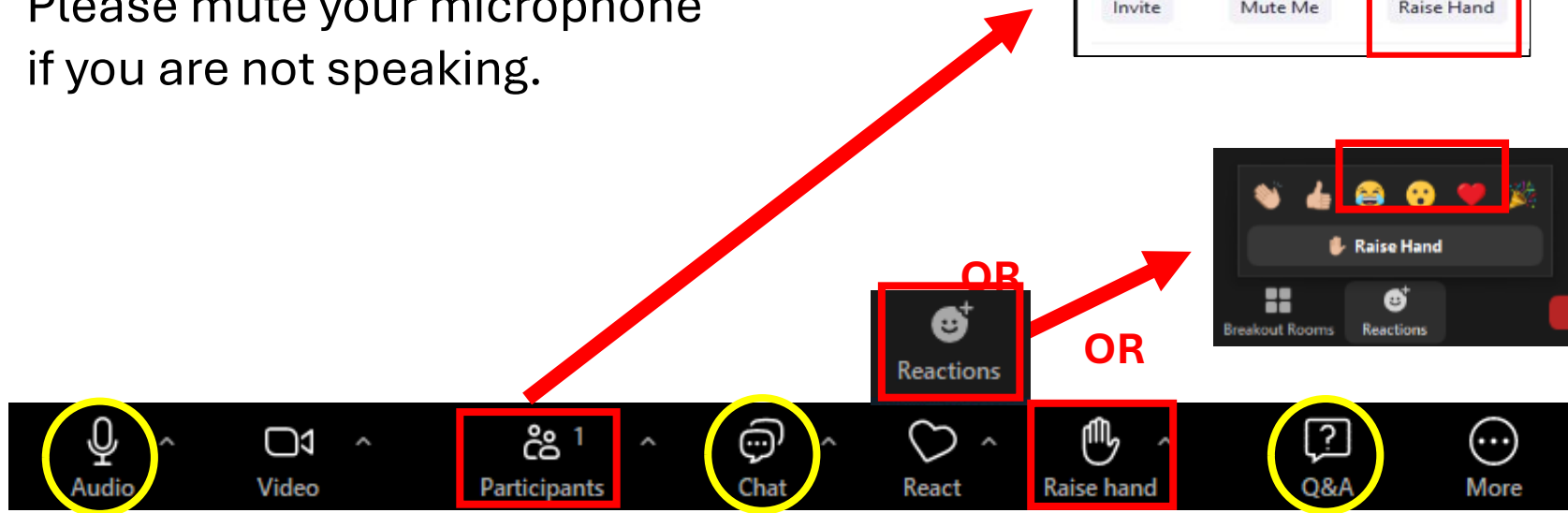
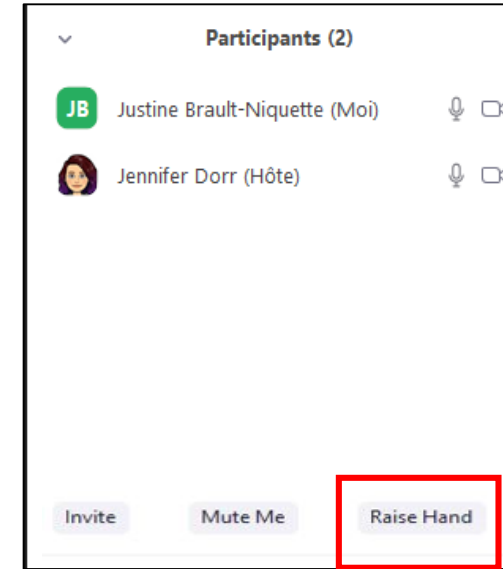
Public information session

July 10, 2025



To Participate

- Type in the chat, ask a question in the Q&A or use the "raise hand" function
- If you join the session by phone, press *9 to ask a question.
- Please mute your microphone if you are not speaking.



Agenda

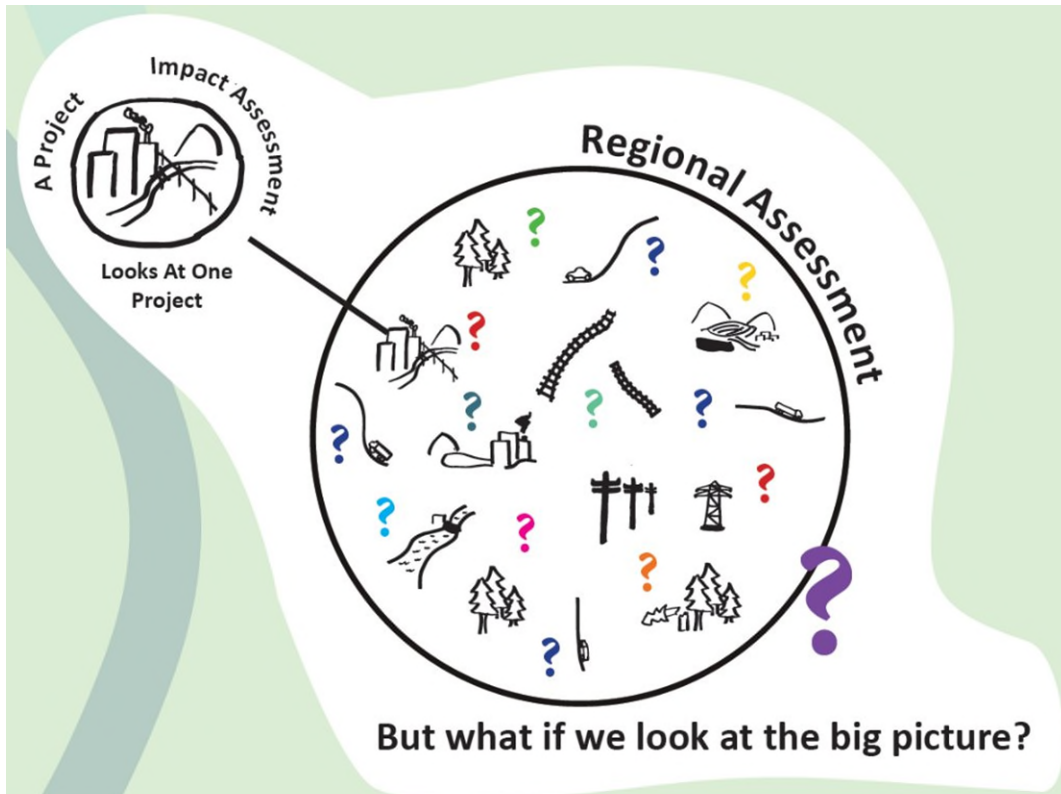
1. Regional Assessments
2. The Regional Assessment in the Ring of Fire Area
3. Maajitao/Majitata – Conduct Phase Workplan
4. Roster of Expert Supports
5. Public Participation
 - Participant Funding
 - Call for Information
6. Next Steps



Regional Assessments

What are regional assessments?

Regional Assessments (RAs)



- RAs are like Impact Assessments but with a much **wider scope**
- RAs **do not evaluate a single development proposal** but assess the potential effects of multiple (current and future) developments and activities in a geographic region
- Regional assessments **go beyond the scope of project-specific impact assessments** to understand the regional context where development occurs (or may occur), and to consider the management of effects from **a regional perspective**
- Sections 92 and 93 of the IAA authorize the Minister of Environment and Climate Change to establish Regional Assessments of a particular region



Regional Assessment in the Ring of Fire Area

Regional Assessment in the Ring of Fire area - Overview

- An RA in the Ring of Fire area (also known as Kawana ‘bi ‘kag by many local First Nations) is being **co-led with 15 First Nation Partners** and the Impact Assessment Agency of Canada (IAAC)
- First Nation Partners and IAAC, collectively referred to as the **Regional Assessment Working Group*** (RAWG), are committed to co-leading and working cooperatively throughout the RA process

- ** The Working Group is composed of community members of the following First Nation partners, with administrative support from Matawa and Mushkegowuk Councils: Aroland First Nation, Attawapiskat First Nation, Constance Lake First Nation, Eabametoong First Nation, Fort Albany First Nation, Ginoogaming First Nation, Kashechewan First Nation, Long Lake #58 First Nation, Marten Falls First Nation, Missanabie Cree First Nation, Moose Cree First Nation, Neskantaga First Nation, Nibinamik First Nation, Webequie First Nation, and Weenusk First Nation*





Context

- **October 2019** – Aroland First Nation and a few NGOs recommend to the Minister of Environment that a RA be conducted in the James Bay Lowlands area
- **February 2020** – Minister of Environment determined that a RA was warranted
- **December 2021** – Joint federal-provincial draft terms of reference are released
- **2022** – Chiefs of Matawa and Mushkegowuk member communities recommended a collective approach to the RA
- **January 2023** - Minister meets with leaders from Matawa and Mushkegowuk First Nations to discuss the requirement for a co-developed RA and commits to a co-led RA
- **April 2023** The Regional Assessment Working Group is established and regular meetings are scheduled to co-develop the draft Terms of Reference
- **September 4, 2024** – Draft Terms of Reference are posted for a comment period on the Canadian Impact Assessment Registry
- **January 2025** – Terms of Reference are finalized by Chiefs of First Nation Partners and the Minister of Environment. Conduct Phase begins.

Terms of Reference

- The Terms of Reference (ToR) is the document that provides direction on the purpose, methodology, and deliverables of the RA
- The ToR establishes the common understanding of the RAWG's duties and overall mandate
- The ToR were finalized by Chiefs of First Nation Partners and the Minister of Environment, closing the Planning Phase of the RA and kicking off the Conduct Phase



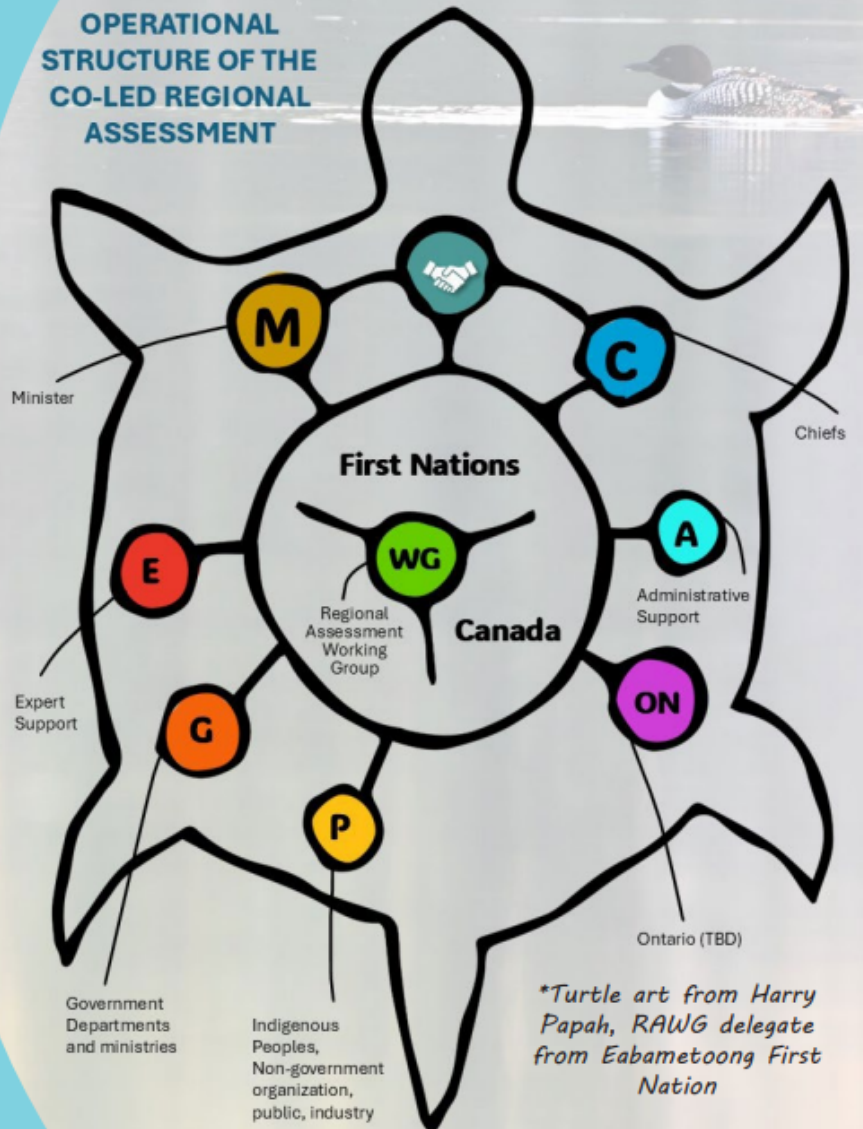
Guiding Principles

1. Place Indigenous Values, interests and priorities at the forefront of the Assessment process
2. Collaborative and co-led
3. Ensure traditional knowledge, natural law and customs are woven into the Regional Assessment
4. Ensure information gathering process and analysis is founded on shared understanding of sustainable development
5. Contributes towards a renewed relationship between Canada and Indigenous Peoples
6. Provide opportunities sharing knowledge
7. Transparent and accessible
8. Maximize opportunities for meaningful participation
9. First Nations Partners maintain right to control access to their traditional knowledge



Operational Structure

OPERATIONAL STRUCTURE OF THE CO-LED REGIONAL ASSESSMENT



Regional Assessment Working Group (RAWG):

- Responsible for conducting the RA
- Guiding operations using appropriate cultural protocols, collecting and storing knowledge, producing reports, and conducting studies

Administrative Support

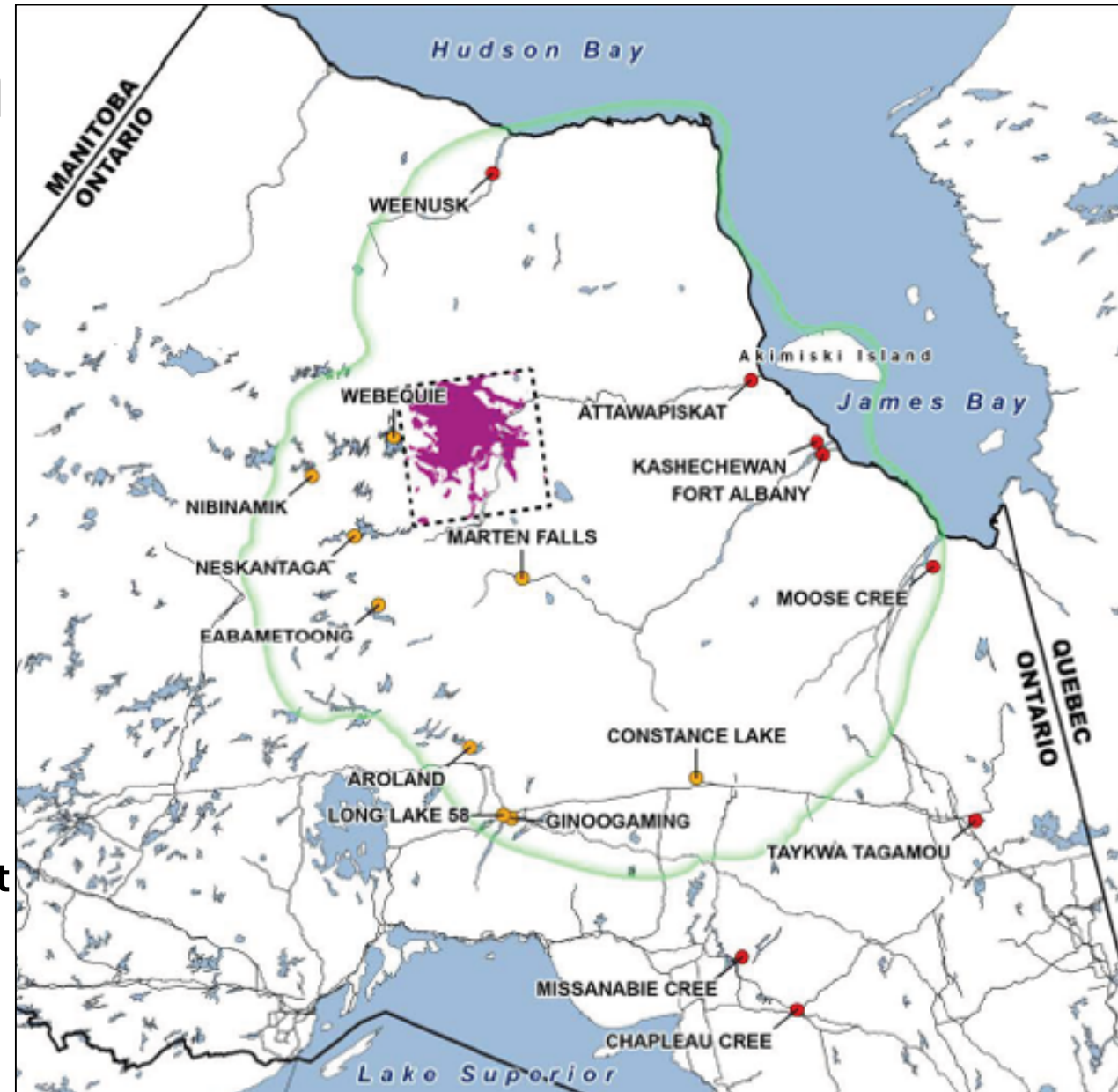
- Provided by staff from Matawa and Mushkegowuk Councils
- Independent facilitator

Chiefs and Minister

- Meet to discuss final report's findings and recommendations
- Minister issue a written response

Assessment Location

- **Development Area:** area centered on the **Ring of Fire mineral deposits** in northern Ontario, which reflects the specific underlying geological formations that represent the Ring of Fire [*dashed square box*].
- **Assessment Area:** includes most of the communities and **traditional territories** of the First Nation Partners. It is the region most likely to experience the extent of positive and negative effects as a result of activities in the development area, as well as any **associated infrastructure and induced development** that may occur or has occurred in the region [*green line*].





Maajitao/Majitata – Conduct Phase Workplan

Regional Assessment in the Ring of Fire Area

Conduct Phase Workplan

Maajitao/ Majitata



Informed Decision Making

Expert & Government Supports
 First Nation Partner Communities
 Regional Assessment Working Group
 Indigenous Peoples and Public Engagement

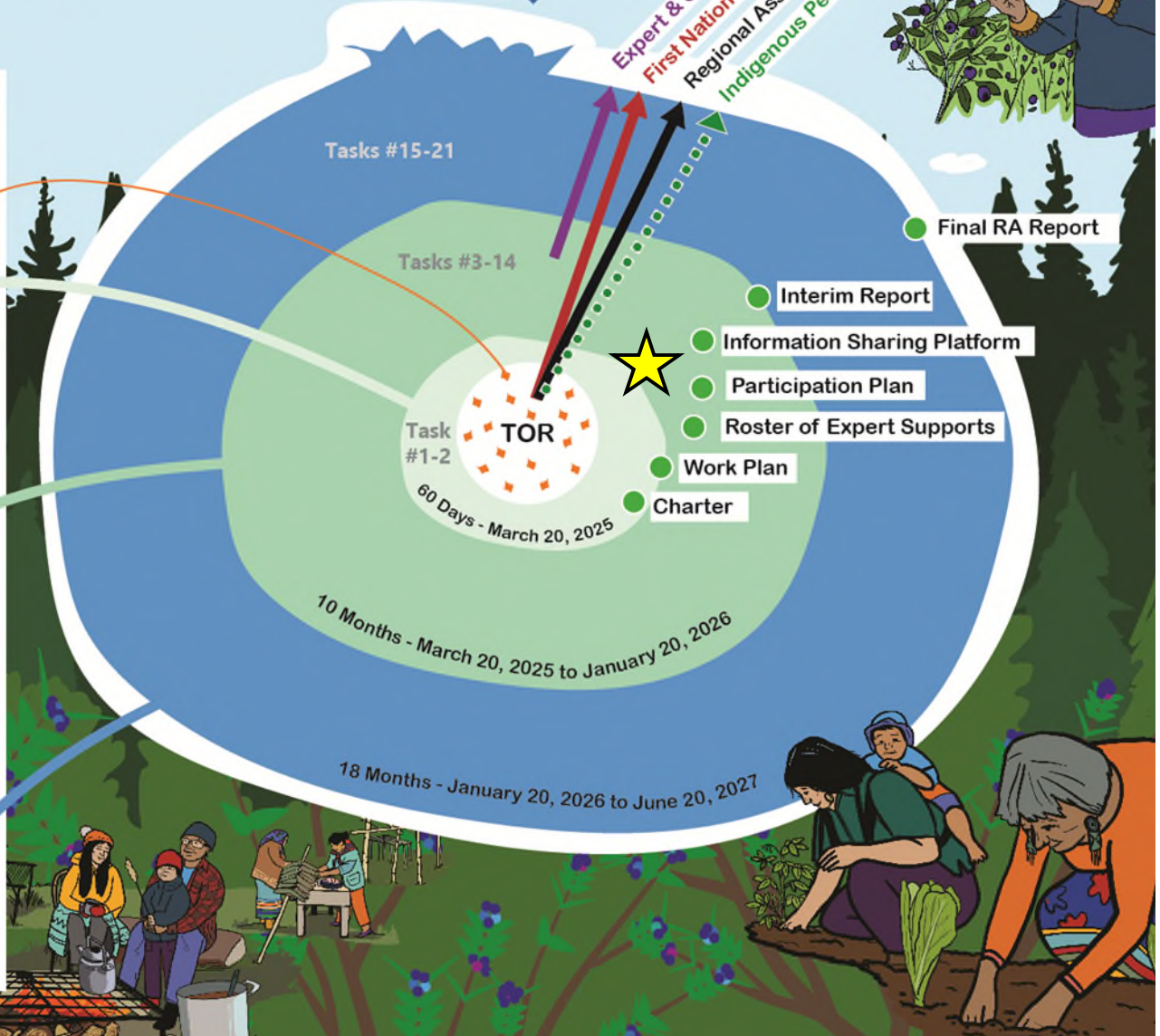


Diagram Details

Regional Assessment Working Group (RAWG) members (for definition, see Annex 3, pg. 58 of RA ToR)

Tasks

1. Charter
2. Workplan
3. Roster of expert supports
4. Participation plan
5. Information sharing platform
6. Scenario development
7. Community-led studies
8. Information collection
9. Gaps analysis
10. Interim report
11. Community engagement
12. Technical sessions
13. RAWG meetings
14. Evaluate cumulative impacts
15. Evaluate cumulative impacts (cont'd)
16. Community-led studies (cont'd)
17. Community engagement (cont'd)
18. Scenario development (cont'd)
19. RAWG meetings (cont'd)
20. Technical sessions (cont'd)
21. Final Regional Assessment (RA) report & recommendations





Roster of Expert Supports



Roster of Expert Supports

- Established a roster of experts supports in May, 2025 with over 90 individuals and organizations
- The RAWG will seek information and advice from expert supports (outside First Nation Partner's communities) who have knowledge or experience to inform the Regional Assessment
 - Indigenous Peoples and organizations, government and non-government organizations and the public

Roles and
Responsibilities

Topics

Procurement



Public Participation

Opportunities for the public to participate

Activities & Opportunities for Meaningful Participation

- Roster of Expert Supports
- Call for Information
- Comment periods
 - Terms of Reference and Draft Final Report (IAAC)
- Information sessions
- Update emails
- Participant Funding
- Information Sharing Platform
- Canadian Impact Assessment Registry
 - Public Notices
 - Comments
- Social media updates





Participant Funding

- Funding to support participation from Indigenous peoples and the public.
- [Applications for funding](#) are currently open and will be received until **July 21, 2025**.
- Eligible expenses are:
 - Staff salaries
 - Administrative costs and office supplies
 - Rental of office space and meeting rooms
 - Local collection/distribution of information, and media advertisement
 - Legal fees
 - Professional fees
 - Honoraria and ceremonial offerings
 - Travel expenses
- Please contact the participant funding team for further information (fp-paf@iaac-aeic.gc.ca)

Call for Information

Objective: to continue identifying existing and available information sources (e.g., datasets) that may be useful for the Regional Assessment

- The Call for Information is going out soon
- Request to Indigenous Peoples and Public (e.g. Indigenous organizations, academics, not-for-profit organizations)



Next Steps

- Scenario development
- Community and public engagement
- Develop information sharing platform
- Interim report (January 2026)



How to contact us

Contact information:

Impact Assessment Agency of Canada
Regional Assessment in the Ring of Fire
Area

160 Elgin, 22nd Floor

Ottawa, ON K1A 0H3

regionalrof-cdfregionale@iaac-aeic.gc.ca

Media Relations:

Media@iaac-aeic.gc.ca

Participant Funding:

fp-paf@iaac-aeic.gc.ca

1-866-582-1884