



Regional Assessment in the Ring of Fire Area

Public Information Session

March 11, 2026

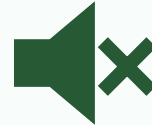
To Participate



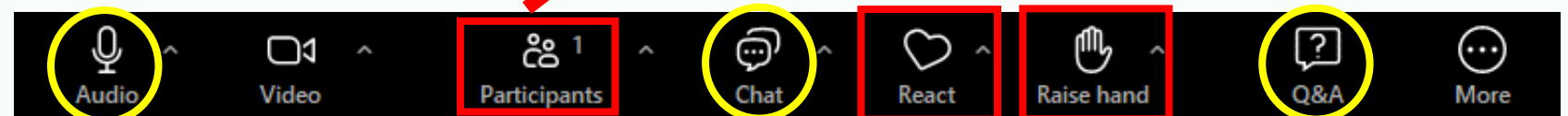
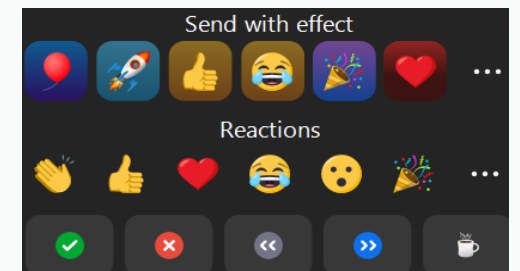
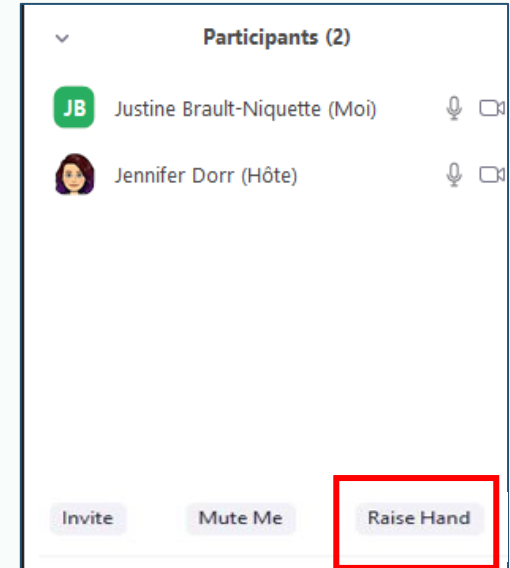
Type in the chat, ask a question in the Q&A or use the "raise hand" function



If you join the session by phone, press *9 to ask a question.



Please mute your microphone if you are not speaking.



OR

OR

Agenda

1. The Regional Assessment in the Ring of Fire Area
2. Interim Report
3. Information Sharing Platform
4. Next Steps
5. Questions and Discussion Activity



The background features a close-up of a tree trunk with light-colored bark. Overlaid on this is a stylized graphic consisting of a teal wavy line at the top, a light green rounded shape below it, and a darker green area at the bottom containing a black line-art illustration of a forest scene with trees and a small building.

Regional Assessment

Overview

Regional Assessment in the Ring of Fire area

- An RA in the Ring of Fire area (also known as Kawana 'bi 'kag by many local First Nations) is being **co-led with 15 First Nation Partners** and the Impact Assessment Agency of Canada (IAAC)
- First Nation Partners and IAAC, collectively referred to as the **Regional Assessment Working Group*** (RAWG), are committed to co-leading and working cooperatively throughout the RA process

- ** The Working Group is composed of community members of the following First Nation partners, with administrative support from Matawa and Mushkegowuk Councils: Aroland First Nation, Attawapiskat First Nation, Constance Lake First Nation, Eabametoong First Nation, Fort Albany First Nation, Ginoogaming First Nation, Kashechewan First Nation, Long Lake #58 First Nation, Marten Falls First Nation, Missanabie Cree First Nation, Moose Cree First Nation, Neskantaga First Nation, Nibinamik First Nation, Webequie First Nation, and Weenusk First Nation*



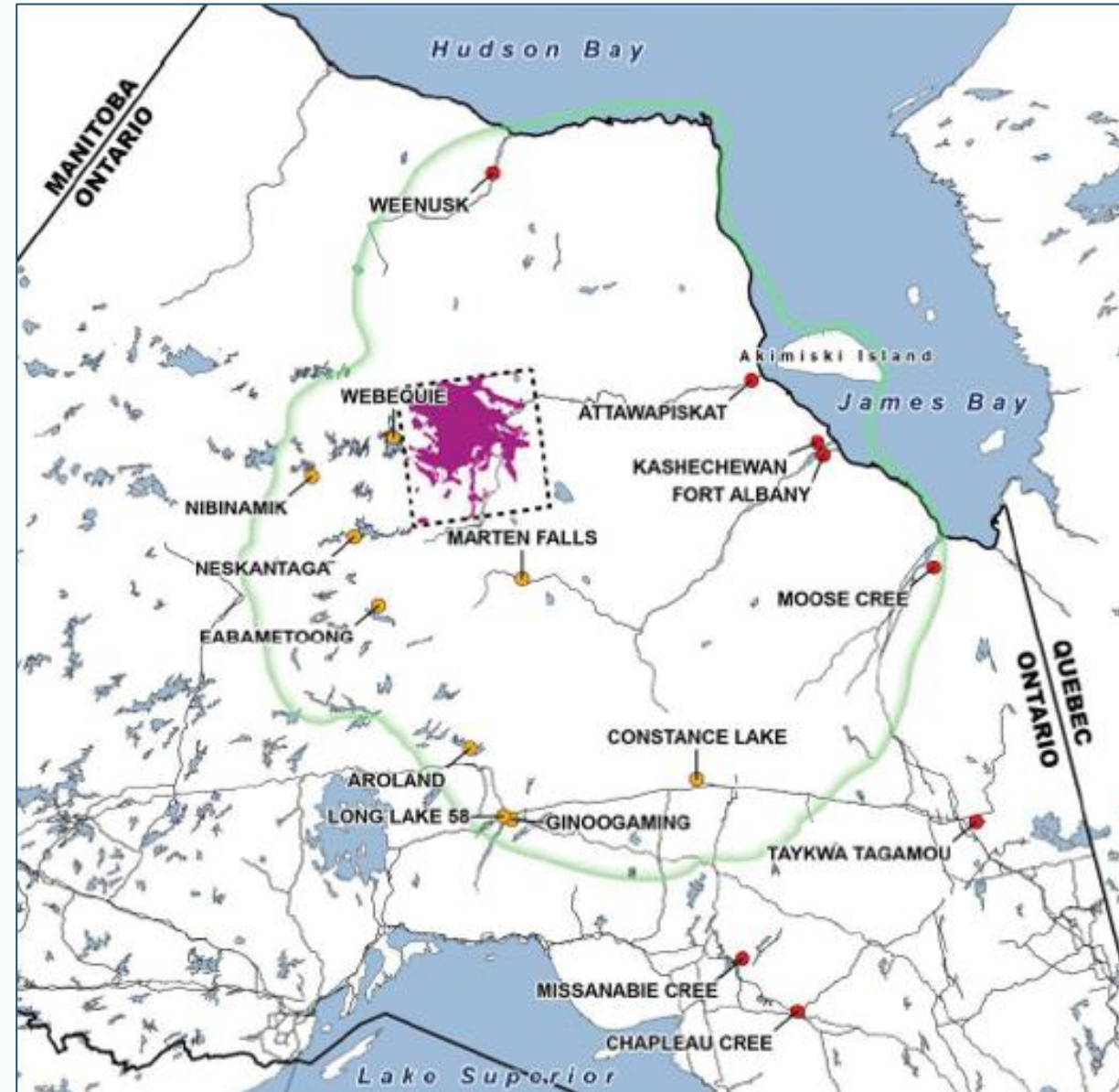
Guiding Principles

1. Place Indigenous Values at the forefront
2. Collaborative and co-led
3. Integration of Knowledge Systems
4. Shared Understanding of Sustainability
5. Renewed Relationship and Reconciliation
6. Knowledge Sharing and Capacity Building
7. Transparent and Accessible
8. Meaningful Participation
9. Respect for Traditional Knowledge



Regional Assessment in the Ring of Fire area

- **Development Area:** area centered on the **Ring of Fire mineral deposits** in northern Ontario, which reflects the specific underlying geological formations that represent the Ring of Fire [*dashed square box*].
- **Assessment Area:** includes most of the communities and **traditional territories** of the First Nation Partners. It is the region most likely to experience the extent of positive and negative effects as a result of activities in the development area, as well as any **associated infrastructure and induced development** that may occur or has occurred in the region [*green line*].



Regional Assessment in the Ring of Fire Area

Conduct Phase Workplan

Maajitao/ Majitata



Informed Decision Making

Expert & Government Supports
 First Nation Partner Communities
 Regional Assessment Working Group
 Indigenous Peoples and Public Engagement

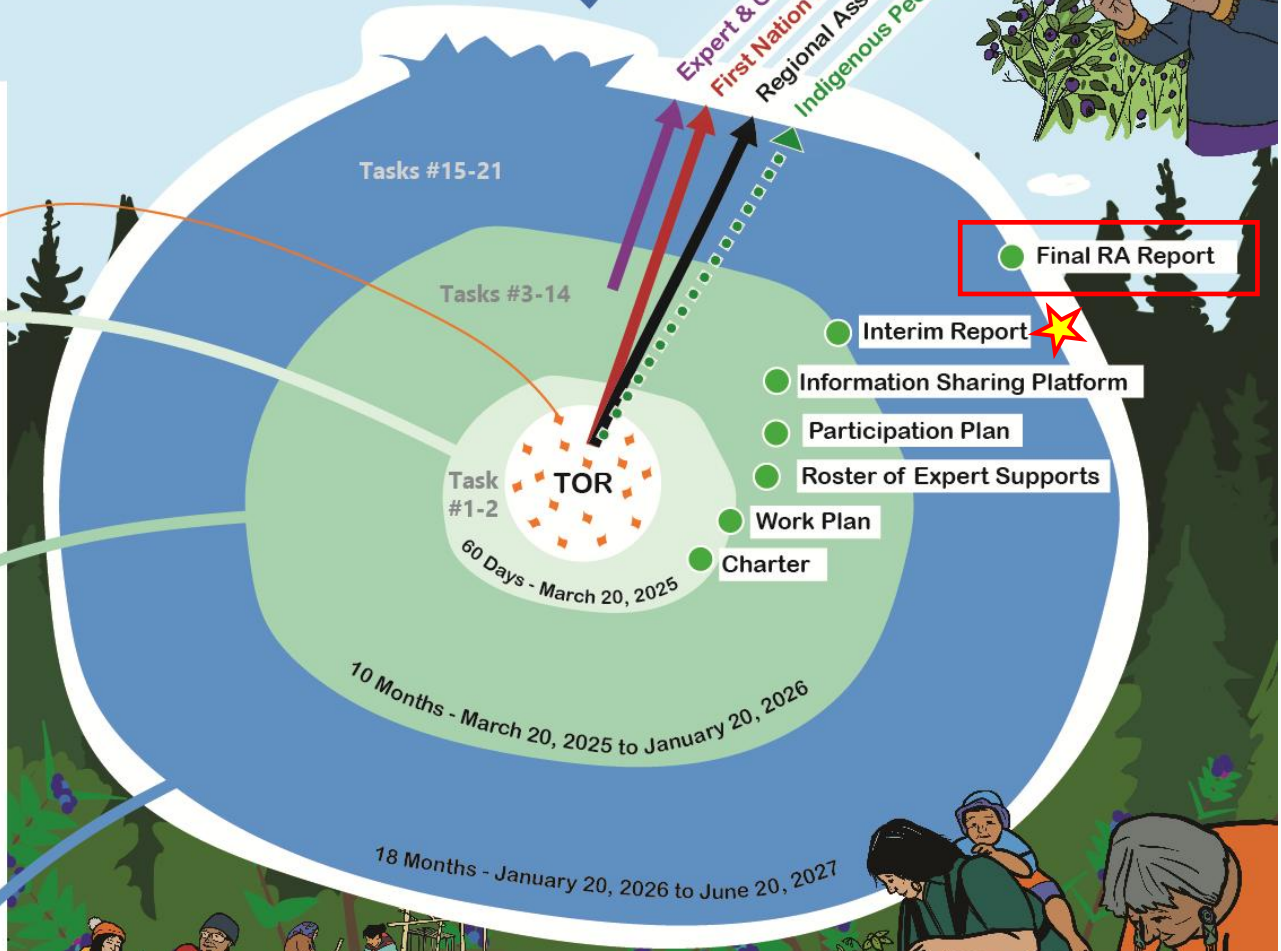


Diagram Details

Regional Assessment Working Group (RAWG) members (for definition, see Annex 3, pg. 58 of RA ToR)

Tasks

1. Charter ●
2. Workplan ●
3. Roster of expert supports ●
4. Participation plan ●
5. Information sharing platform ●
6. Scenario development
7. Community-led studies
8. Information collection
9. Gaps analysis
10. Interim report ●★
11. Community engagement
12. Technical sessions
13. RAWG meetings
14. Evaluate cumulative impacts
15. Evaluate cumulative impacts (cont'd)
16. Community-led studies (cont'd)
17. Community engagement (cont'd)
18. Scenario development (cont'd)
19. RAWG meetings (cont'd)
20. Technical sessions (cont'd)
21. Final Regional Assessment (RA) report & recommendations ●



The background features a close-up of birch bark on the left. Overlaid on this are several teal-colored wavy lines that resemble a river or a path. In the lower half, there is a green graphic area containing a black line drawing of a tree with a small house and a flag at its base.

Interim Report

Interim Report

Interim report submitted January 20, 2026:

- Overview of milestones
- Identified key issues, existing conditions, and information gaps
- Scenario development progress
- Early recommendations

**Aabitaad • Megwaad
Pitamah • Interim Report**

for the *Regional Assessment
within Kawana 'Bi 'Kag/
Biiwaapiko'kaning"
/Kahwanna Bay Yak
(the Ring of Fire Area)*

Prepared by the Regional Assessment Working Group



Priorities, Gaps and Recommendations

- Urgent issues about infrastructure and
- Challenges to meet reserve boundaries
- Common connectivity and wellbeing
- Examples of positive
- Key observations, *any Mines* priorities
- Understanding what exists now, is a first step to considering how development could affect this region





Information Sharing Platform

Information Sharing Platform

The Information Sharing Platform (ISP) launched January 20, 2026
– Platform to interact with data, maps, and information that support the Regional Assessment



Information Sharing Platform

Regional Assessment in the Ring of Fire Area

Welcome to the *Information Sharing Platform for the Regional Assessment in the Ring of Fire Area*. This platform provides access to key data, interactive maps, research, and information that support the conduct of the Regional Assessment (RA). Explore the sections below to learn more about the RA and to access the most current information.

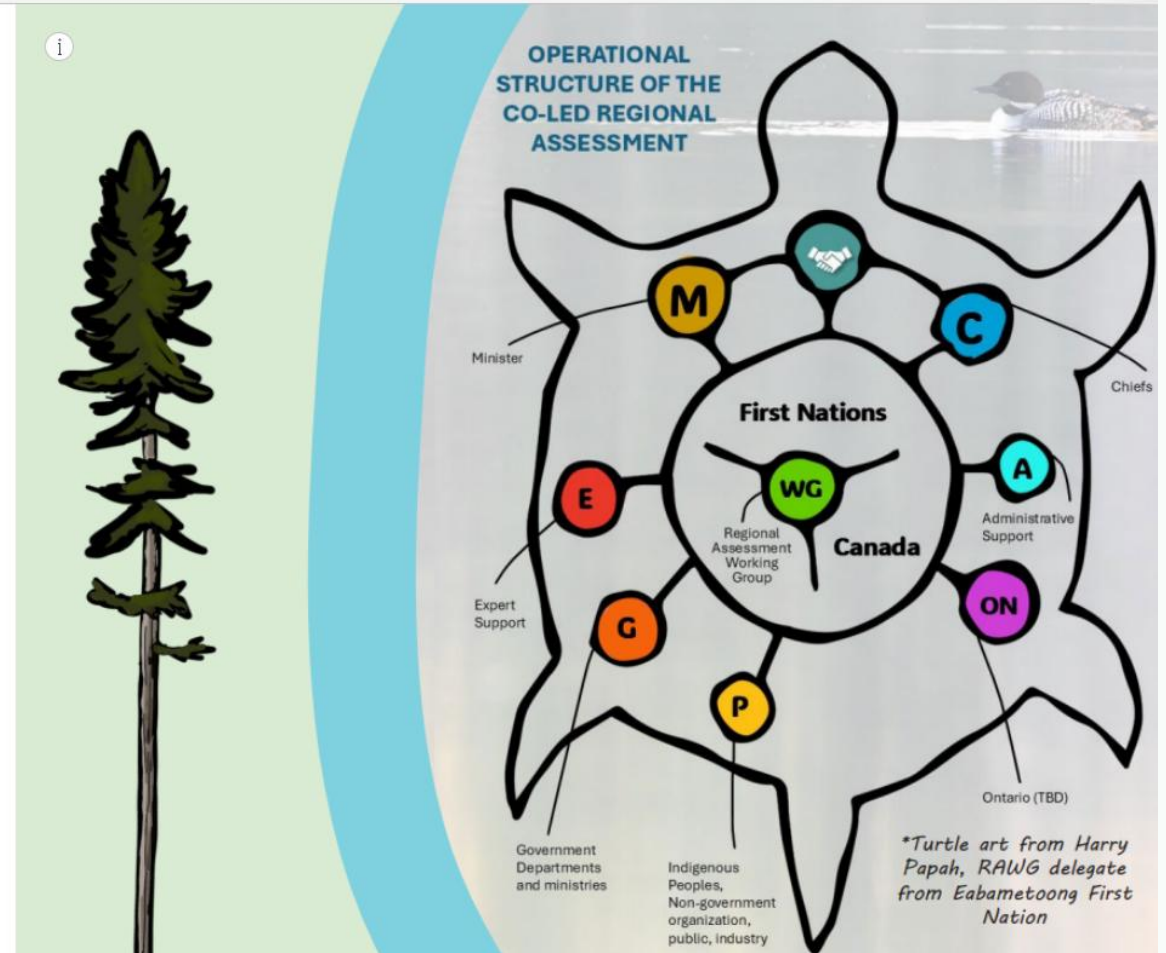
Data Catalogue

Map View

Story Map

Operational Structure

- The Regional Assessment Working Group: A Working Group will be established to conduct the Regional Assessment and will consist of community members from each First Nation Partner and representatives from the Impact Assessment Agency of Canada (IAAC).
- First Nation Partner Communities: The Regional Assessment must be community-focused and include mechanisms for community dialogue and meaningful involvement of First Nation Partner community members.
- Administrative Support: Administrative support will include staff from Matawa and Mushkegowuk Tribal Council and IAAC.
- Chiefs of the First Nation Partners and the Minister: Chiefs of the First Nation Partners and the Minister will seek opportunities to meet to discuss the findings and recommendations in the final Report.



The background features a close-up of a tree trunk with light-colored bark on the left. A thick, teal wavy line curves across the upper portion of the image. Below this, a green graphic contains black line art of a landscape with a central tower and surrounding foliage.

Next Steps



Future Activities & Opportunities for Meaningful Participation

Tools:

- Update emails to distribution list
- Information Sharing Platform
- Canadian Impact Assessment Registry
 - Public Notices
 - Comments
- Social media updates



Next Steps...

- Finalize development scenarios
- Expand information sharing platform
- Evaluating Impacts and Mitigation Measures
- Final report (July 2027)

Questions and Discussion (30 min)

Interactive Whiteboard

Information Session Input

Navigation Menu

[Instructions](#)


[Follow-up](#)

Input on regional assessment:

- [Concerns](#)
- [Benefits](#)
- [Values and Interests](#)

How to share your input?

Click the sticky note symbol from the tool bar on the left of your screen and add a note anywhere on the whiteboard.



In the boxes below, please share what comes to mind when thinking of development in the Ring of Fire area:

Concerns

Benefits

Values and Interests

Instructions


Click links in the navigation list or scroll with your mouse to zoom to an object.

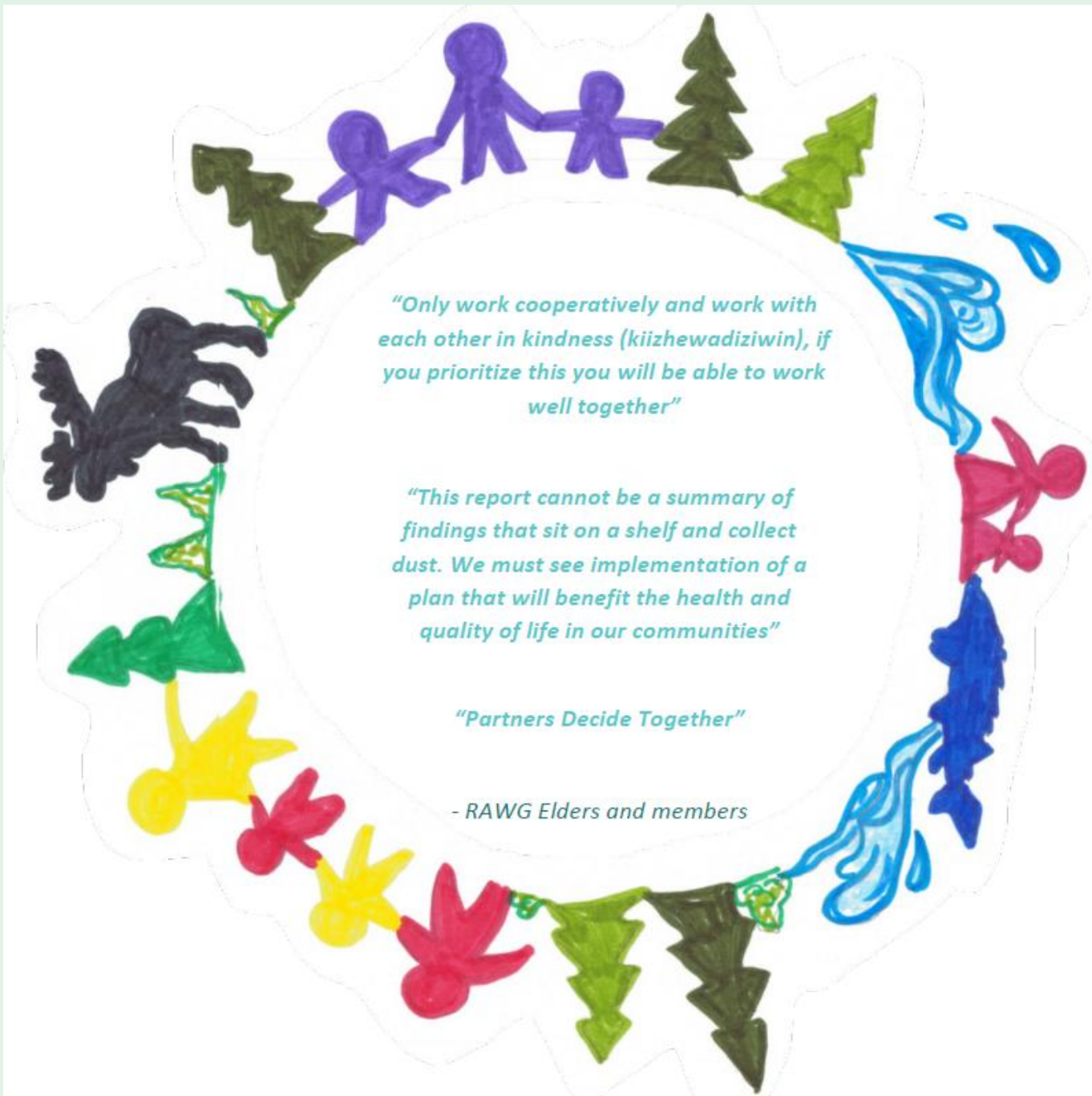
Use 50% zoom to see the entire whiteboard.

Follow-up

Would you like us to follow-up with you?

Contact information:
Impact Assessment Agency of Canada, Regional Assessment in the Ring of Fire Area
160 Elgin, 22nd Floor, Ottawa, ON K1A 0H3
regionalrof-cdfregionale@iaac-aeic.gc.ca





How to contact us

Contact information:

Impact Assessment Agency of Canada
Regional Assessment in the Ring of Fire
Area

160 Elgin, 22nd Floor

Ottawa, ON K1A 0H3

regionalrof-cdfregionale@iaac-aeic.gc.ca

Media Relations:

Media@iaac-aeic.gc.ca

Thank you - Merci