

Tilbury LNG Phase 2 Expansion Project

VIRTUAL OPEN HOUSE

June 18 & 23, 2020



EAO

Environmental
Assessment Office



Impact Assessment
Agency of Canada

Agence d'évaluation
d'impact du Canada

Opening & Welcome



Fern Stockman, Environmental
Assessment Office



Natasha Anderson, Impact
Assessment Agency of Canada



Environmental
Assessment Office



Impact Assessment
Agency of Canada

Agence d'évaluation
d'impact du Canada

Agenda

Time	Topic	Presenter
5 mins	Welcome and Introductions	EAO/IAAC
20 mins	Process Overview & Early Engagement Phase	EAO/IAAC
20 mins	Tilbury LNG Project Overview	FortisBC
40 mins	Q&A Session	EAO, IAAC and FortisBC
5 mins	Closure and next steps	EAO/IAAC



Environmental
Assessment Office



Impact Assessment
Agency of Canada

Agence d'évaluation
d'impact du Canada

Submitting a question or comment – Skype Broadcast

ive broadcast meeting

Support >>

Skype Q&A

ask as Natasha

ask a question

ask

ask anonymously

Tilbury LNG Phase 2 Expansion Project

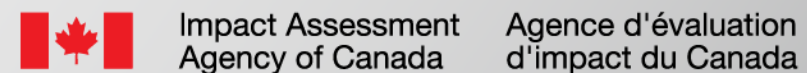
VIRTUAL OPEN HOUSE

June 18 & 23, 2020



top all my questions

- 3 Will the project have effects on the local air quality? 7 minutes ago
- 2 How will the Project impact marine traffic on the Fraser River? 6 minutes ago
- 2 From my understanding this project hasn't been approved yet. What would be the reason that the BCUC wouldn't approve it? 8 minutes ago
- 1 How will the Impact Assessment Agency and BC's Environmental Assessment Office work together during the assessment? 5 minutes ago
- 1 Will the Project increase truck traffic on local roads? 6 minutes ago



Impact and Environmental Assessments



EAO

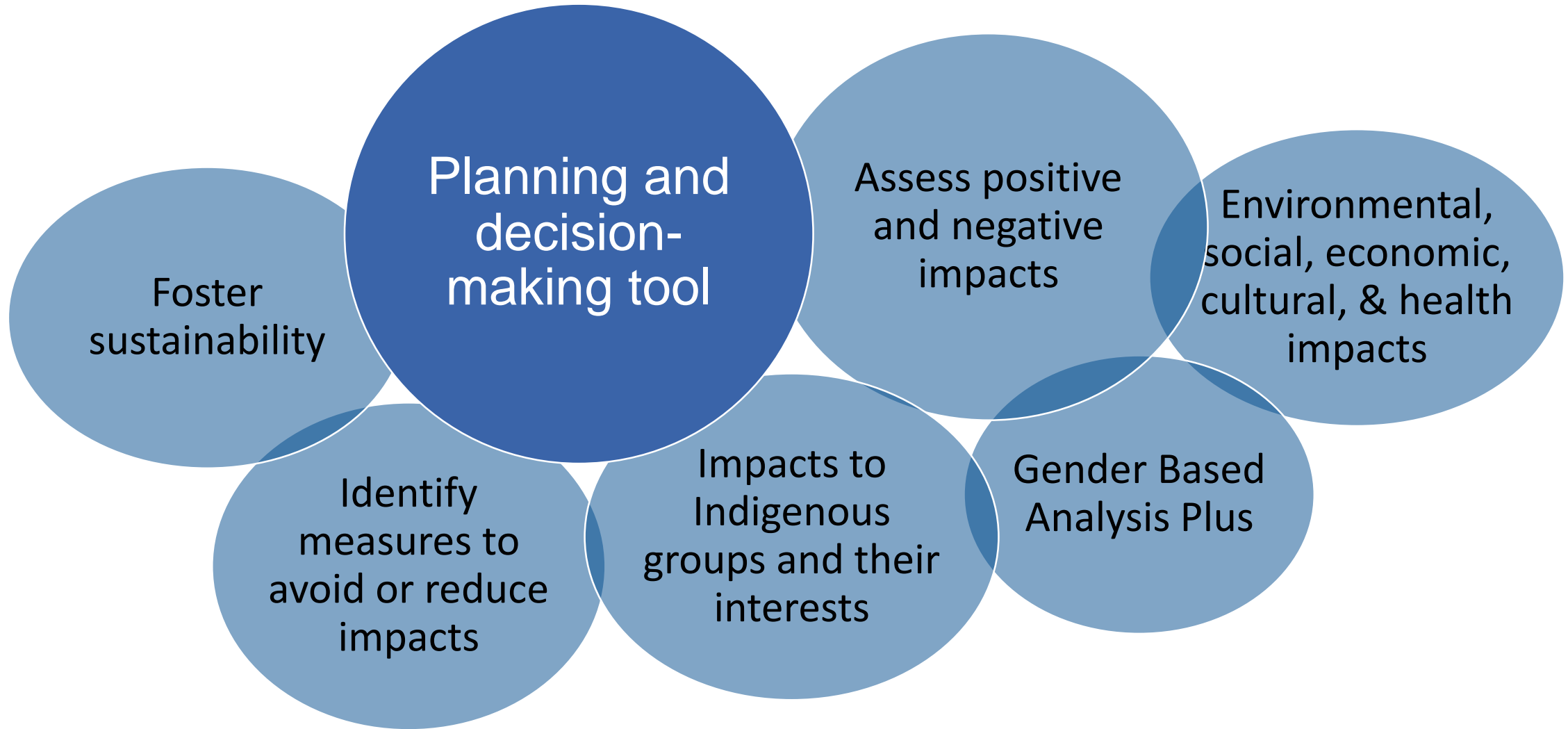
Environmental
Assessment Office



Impact Assessment
Agency of Canada

Agence d'évaluation
d'impact du Canada

What is an Environmental or Impact Assessment?



Who Participates in Assessments?



- Indigenous peoples
- The public
- Proponents
- Provincial and federal agencies
- Local governments
- Advisory committees

Public Engagement

- Essential to environmental and impact assessments
- The public will be invited to participate in public comment periods during project reviews, for example on:
 - the Initial Project Description
 - the proponent's Impact Statement / Application
 - Government draft Assessment Reports and potentially legally binding project conditions
- Comment periods also include in-person engagement and often alternative engagement approaches, such as this virtual open house



EAO

Environmental
Assessment Office



Impact Assessment
Agency of Canada

Agence d'évaluation
d'impact du Canada

The Impact Assessment Agency of Canada

- What is the *Impact Assessment Act* (the IAA)?
- Who is the Impact Assessment Agency of Canada (the Agency/IAAC)?
- The Agency works collaboratively with:
 - other provinces/territories/jurisdictions/Indigenous groups who may also be assessing a project;
 - federal expert departments who provide analysis to inform the assessment; and
 - federal and provincial regulators, such as the Canada Energy Regulator.



EAO

Environmental
Assessment Office

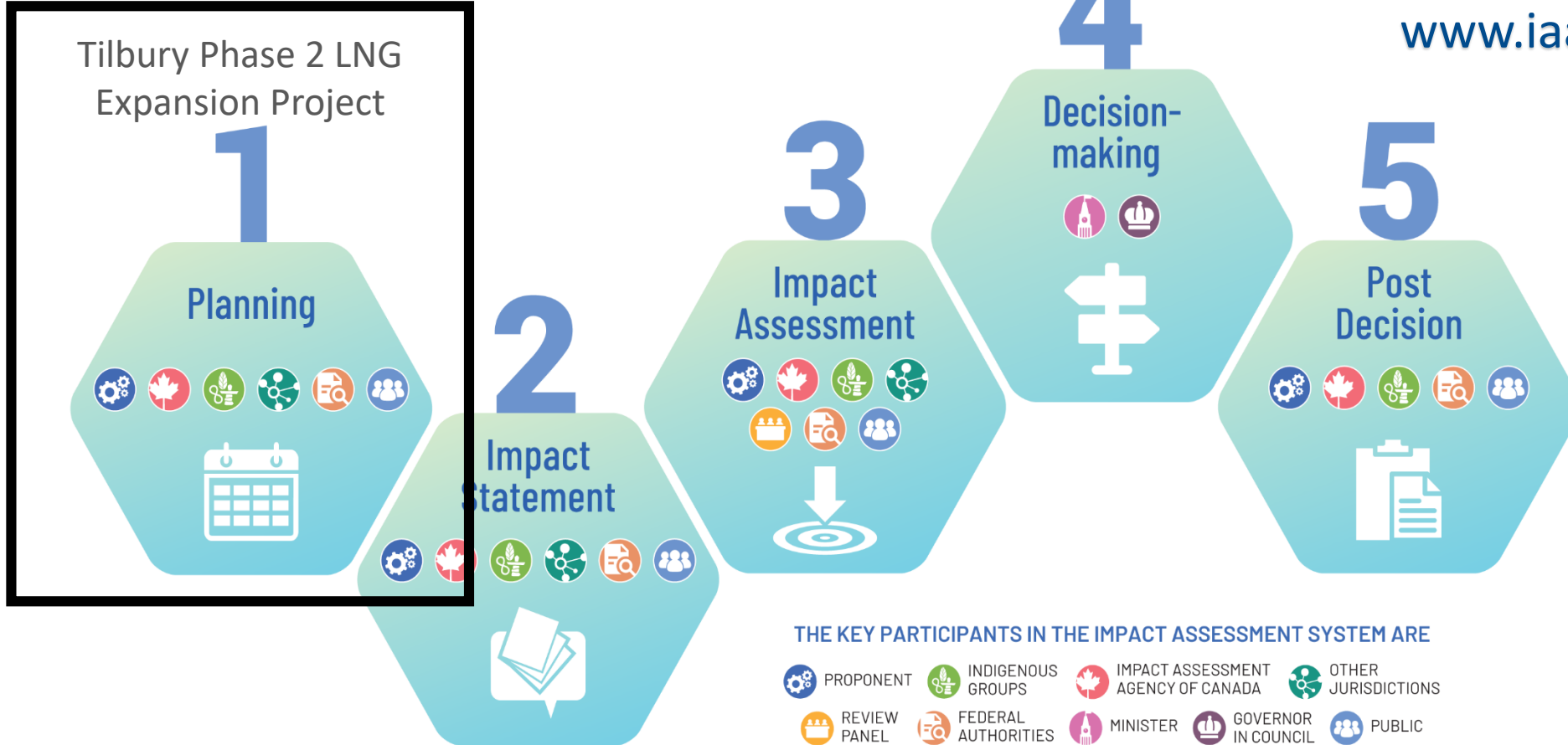


Impact Assessment
Agency of Canada

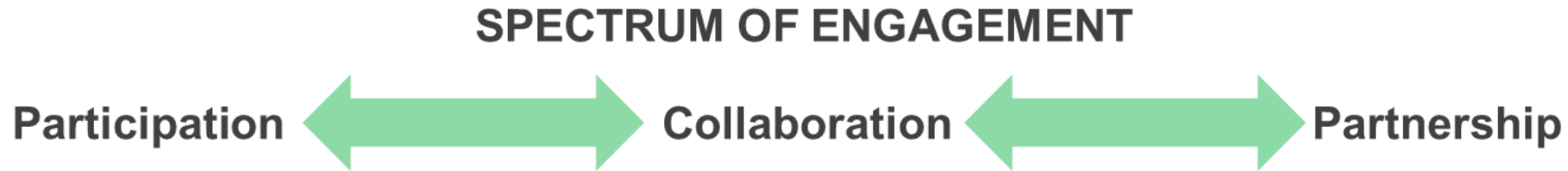
Agence d'évaluation
d'impact du Canada

Impact Assessment Process Overview

FOR FREE TRAINING VISIT
www.iaac-aeic.gc.ca



Engagement with Indigenous Peoples



- The *Impact Assessment Act* includes provisions pertaining to engagement with Indigenous peoples that relate to four themes:
 - Participation in Impact Assessment
 - Cooperation and Collaboration
 - Impacts on Peoples and Rights
 - Indigenous Knowledge

Coordination

- **What is coordination?**

- In accordance with the *Impact Assessment Cooperation Agreement Between Canada and British Columbia*, the IAAC has been coordinating with B.C. to:
 - Coordinate timelines, including joint comment period
 - Engage with Indigenous groups & the public
 - Develop joint products
 - Provide joint feedback to the proponent on documents



EAO

Environmental
Assessment Office



Impact Assessment
Agency of Canada

Agence d'évaluation
d'impact du Canada

Substitution

- **What is substitution?**

- B.C. has requested that the conduct of the federal impact assessment process be substituted to B.C.
- If approved, the EAO would conduct the impact assessment
- IAAC is seeking your views on this substitution request.
- Substitution decision will be made after the decision about whether an impact assessment is required, and will be posted to the IAAC website including reasons and conditions



EAO

Environmental
Assessment Office




Impact Assessment
Agency of Canada

Agence d'évaluation
d'impact du Canada

Submitting a Comment to IAAC

VISIT WWW.CANADA.CA/CIAR TO ACCESS THE REGISTRY

Participate

 [Submit a comment](#)

Key documents

Document Number	Document Title	File
5	Notice of Time Limit Suspension with Reasons	-
6	Tilbury Phase 2 LNG Expansion Project to the Impact	PDF (545)

- Access information about the Tilbury Phase 2 LNG Expansion Project and other federal impact assessments on the **Canadian Impact Assessment Registry** website.
- This Project has its own unique homepage: iaac-aeic.gc.ca/050/evaluations/proj/80496
- To comment, visit the Project page, click “submit a comment,” and log-in using your e-mail address or social media account.

Submitting a Comment to IAAC

VISIT WWW.CANADA.CA/CIAR TO ACCESS THE REGISTRY

DISCLAIMER

The use of this online submission tool is voluntary and subject to the terms and conditions. You will need to confirm your identity via Twitter, Facebook, Google+ or LinkedIn. Information submitted via this tool must comply with the [Submission Policy](#). We will not accept inappropriate content.

Refer to the contact information identified on the relevant assessment document for more information.

[Submit a Comment](#)

[View Existing Comments](#)

Enter comment title...

 Source | **B** | *I* | U | ~~S~~ | x₂ | x² | *I*_x |  |  |  |  |  |  |  |  |  |  |  |  |  | ?

Issues

Select Comment Tag(s) (optional)

Attachment(s) - Accepted file types: pdf, image, video and audio / Maximum file size: 100 MB

Use Ctrl/Command + select to choose multiple files.

Browse...

I agree to have my email address added to the distribution list for updates about this impact assessment (optional)

I have read and understood the [submission policy](#) (required)

[View Existing Comments](#)



EAO

Environmental
Assessment Office



Impact Assessment
Agency of Canada

Agence d'évaluation
d'impact du Canada

Submitting a Comment: Guiding Questions

1. What is your interest in the Tilbury Phase 2 LNG Expansion Project?
2. How do you think the Tilbury Phase 2 LNG Expansion Project could affect you as an individual either positively or adversely?
3. How do you think the Project could affect your community, either positively or adversely?
4. Is there any specific knowledge (history, environment, social, economic, etc.) you would like to share about your community that may be relevant to the assessment of the project?
5. Are there any positive or adverse effects on the natural environment or on health, social or economic conditions that you think may occur as a result of the Project that are important to you or your community and that should be considered in an impact assessment?
6. Are there any other issues related to the assessment of this project that are important to you or your community that you would like to share?
7. The impact assessment process includes several opportunities for the public to participate through various means, for example in person or online. How would you prefer to participate throughout the assessment process?
8. Are you aware of any challenges facing you or your community that may prevent people from accessing public participation opportunities regarding the Tilbury Phase 2 LNG Expansion Project (e.g. language, economic, geographical, technological, other factors)?



Environmental
Assessment Office



Impact Assessment
Agency of Canada

Agence d'évaluation
d'impact du Canada

B.C. Environmental Assessment Office

PURPOSE:

- To carry out responsibilities in the *Environmental Assessment Act* (2018)
- To support reconciliation with Indigenous peoples in B.C.
- To promote sustainability by protecting the environment and fostering a sound economy and the well-being of British Columbians and their communities



EAO

Environmental
Assessment Office



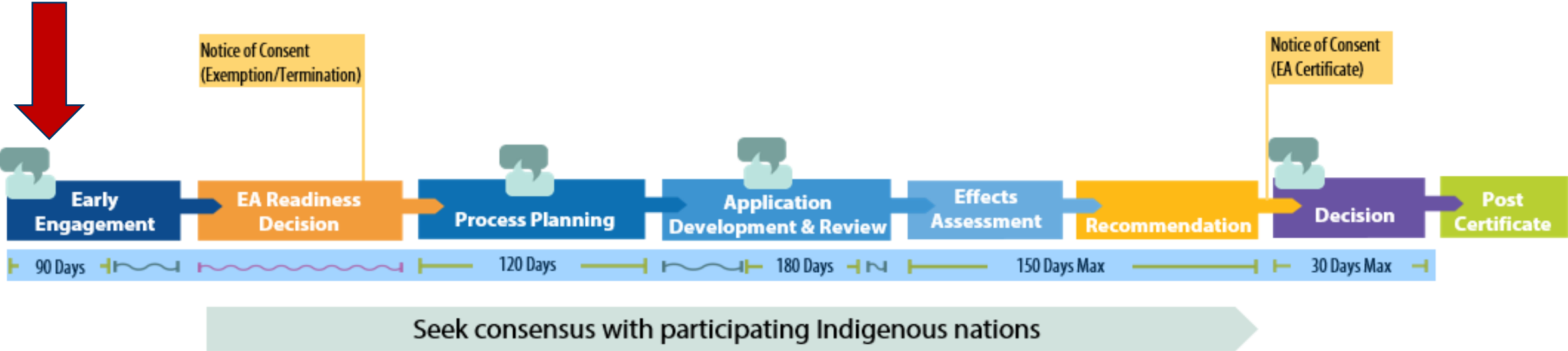
Impact Assessment
Agency of Canada

Agence d'évaluation
d'impact du Canada

Environmental Assessment Process Overview

ENVIRONMENTAL ASSESSMENT ACT (2018)

- Legislated Timeline
- Proponent Time
- EAO Time
- Public Engagement Comment Period



Indigenous Nation Engagement

- Nations that self identify as participating Indigenous nations have broad procedural rights under the Act
- The EAO works with Nations to develop an understanding of each Nation's interests
- Engagement is informed by each Nation's priorities, governance, potential impacts and interests in the project area



EAO

Environmental
Assessment Office



Impact Assessment
Agency of Canada

Agence d'évaluation
d'impact du Canada

Community Advisory Committee

PURPOSE:

- To advise the EAO on the potential effects of the proposed project on the community

OBJECTIVES:

- Provide input on the potential effects of the project on the community and mitigation measures
- Provide a link to the community by transmitting information about the project to the broader community
- Foster community learning about the EA process and the proposed project

INTERESTED?

- Subscribe through the EAO's website



EAO

Environmental
Assessment Office



Impact Assessment
Agency of Canada

Agence d'évaluation
d'impact du Canada

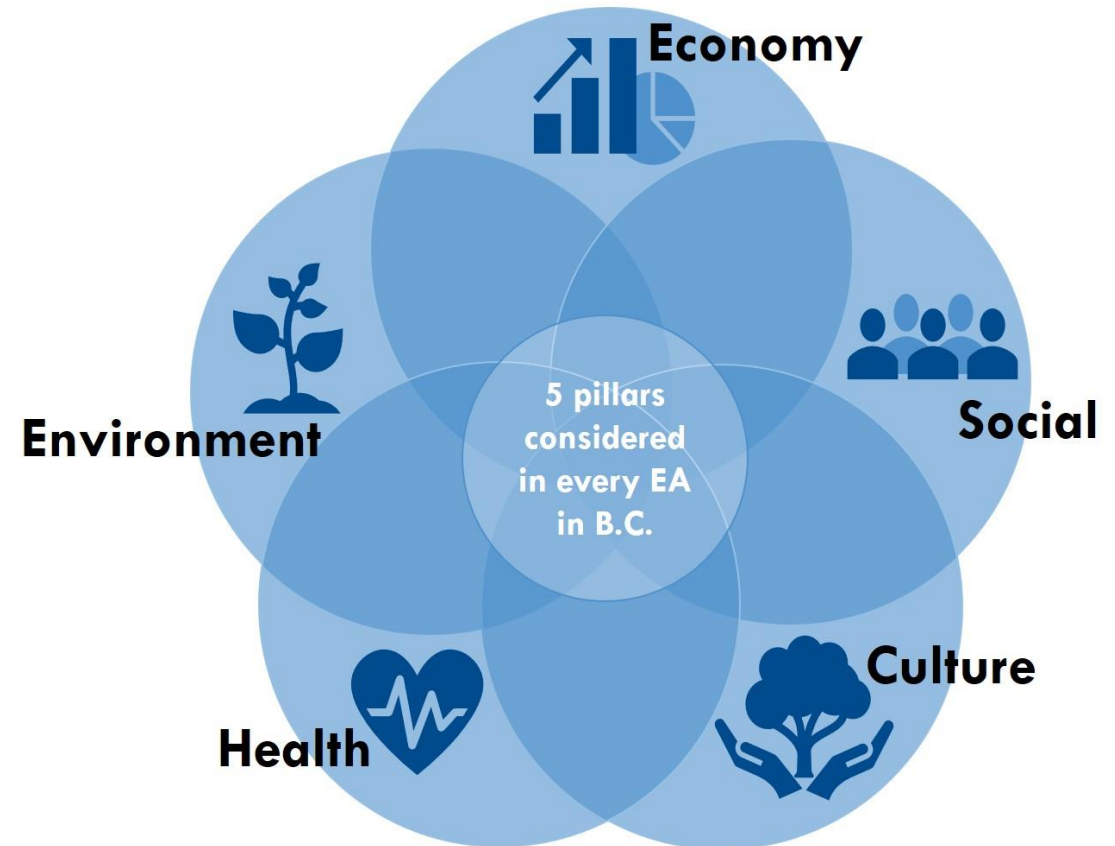
Technical Advisory Committee

PURPOSE:

- Provide technical advice to the EAO and participating Indigenous nations throughout the assessment
- Forum for the detailed, technical review of all the proponent's documents and technical studies

MEMBERSHIP:

- Experts from federal, provincial and local governments and Indigenous nations



Tilbury Phase 2 LNG Expansion Project Early Engagement and Planning Phase



EAO

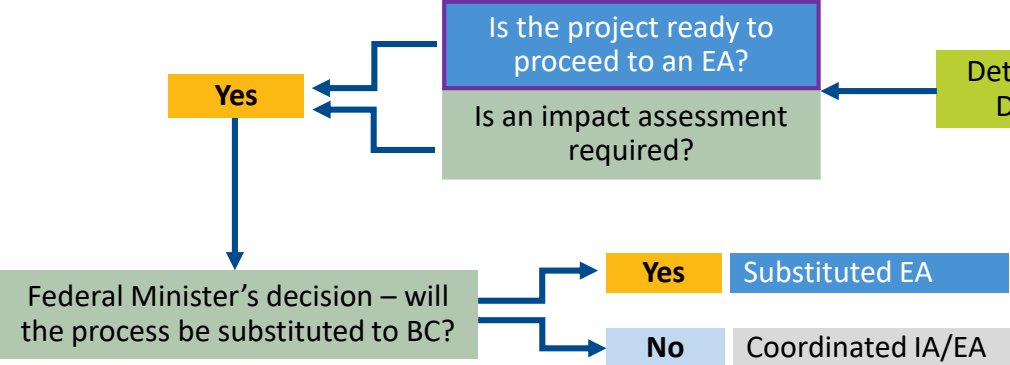
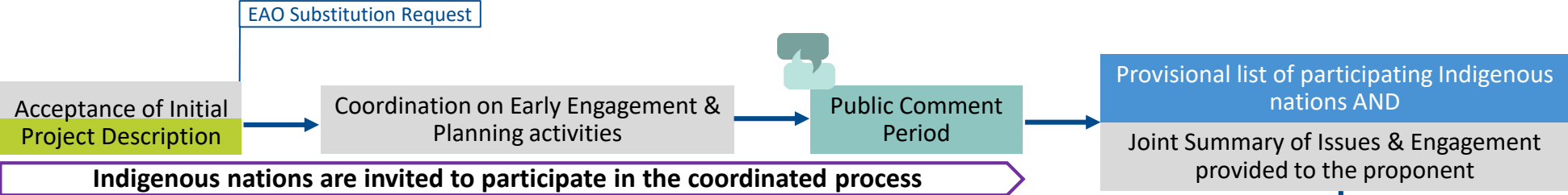
Environmental
Assessment Office



Impact Assessment
Agency of Canada

Agence d'évaluation
d'impact du Canada

Tilbury LNG Coordinated Early Engagement & Planning



- Impact Assessment Agency of Canada (IAAC)
- Environmental Assessment Office (EAO)
- EAO & IAAC
- Indigenous nations
- Proponent
- Public
- Decision



Submitting a Comment to EAO

1. Got to www.projects.eao.gov.bc.ca and scroll down to the Tilbury PCP announcement
2. Click on the “Submit/View Comments” button, a new window will open then click on the “Submit Comment” button

EPIC
BRITISH COLUMBIA

Map View Project Information The EA Process

Tilbury Phase 2 LNG Expansion

Public Engagement & Comment Period open on Initial Project Description

June 1, 2020

The public engagement and comment period is now open for the on the Initial Project Description for the Tilbury Phase 2 LNG Expansion Project (Tilbury LNG), an expansion of an existing liquefied natural gas (LNG) facility owned by FortisBC on Tilbury Island in Delta. The comment period opens on June 1 at 12:00pm PT and closes on July 16 at midnight PT. Virtual open houses will be held on June 18 from 4:00 pm to 5:30 pm PT and June 23 from 5:30 pm to 7:00 pm PT.

The Initial Project Description describes major components of the project, component locations and their extent, proposed project timing and anticipated interactions with the human and biophysical environment. The EAO is seeking feedback on the Initial Project Description, as well as feedback on how members of the public would like to be engaged in the future regarding Tilbury LNG. This feedback will help to inform the development of FortisBC's Detailed Project Description. Once submitted, the Detailed Project Description informs the decision on whether to proceed to an environmental assessment, issue an exemption or terminate the project.

A Community Advisory Committee (CAC) subscription service is also now available for the Tilbury Phase 2 LNG Expansion Project. CAC members can provide local knowledge of the community, the environment and the use of the proposed project area to advise the EAO on the potential effects of the proposed project on the community. CAC members will receive information from the EAO on the environmental assessment process and the project, including notifications of process milestones, when and where key documents are posted, information on public comment periods and additional engagement opportunities. More information on a CAC can be found in the [Community Advisory Guideline](#).

Project Info View Document(s) **Submit/ View Comment(s)**

EPIC
BRITISH COLUMBIA

Map View Project Information The EA Process

The following questions may also be helpful in guiding your comments to the EAO:

- What is your interest in the Tilbury Phase 2 LNG Expansion Project (Tilbury LNG Project)?
- How do you think the Tilbury LNG Project could affect you as an individual either positively or negatively?
- How do you think the Tilbury LNG Project could affect your community, either positively or adversely?
- Is there any specific knowledge (history, environment, social, economic, etc.) you would like to share about your community that may be relevant to the assessment of the Tilbury LNG Project?
- Are there any positive or negative effects on the natural environment or on health, social or economic conditions that you think may occur as a result of the Tilbury LNG Project that are important to you or your community and that should be considered in an environmental assessment?
- Are there any other issues related to the assessment of this project that are important to you or your community that you would like to share?
- The assessment process includes several opportunities for the public to participate through various means, for example in person or online. How would you prefer to participate throughout the assessment process?
- Are you aware of any challenges facing you or your community that may prevent people from accessing public participation opportunities regarding the Tilbury LNG Project (e.g. language, economic, geographical, technological, other factors)?

In Progress

Proponent Fortisbc Type Energy-petroleum & Natural Gas Sub-type Energy Storage Facilities

RELATED DOCUMENTS

Tilbury Phase 2 LNG Expansion Project - Initial Project Description

Submit Comment



Environmental
Assessment Office



Impact Assessment
Agency of Canada

Agence d'évaluation
d'impact du Canada

Submitting a Comment to EAO (cont'd)

3. Click on “Next”, fill out the required information and click “Submit”.

Submit a Comment

How it Works

All accepted comments submitted to the Environmental Assessment Office (EAO) will be published online within seven days of receipt. Comments are not accepted if - in EAO's view - they are profane, abusive or do not relate to the matter being consulted upon as stated in our [Public Comment Policy \[PDF\]](#).

EAO forwards all accepted comments to the project proponent so they can be considered during the project's environmental assessment.

EAO requires that you provide your city/town when making a comment. In order to have your name displayed with your comment, you must select the 'Make my Name visible to public' option. All hyperlinks in comments will be converted to plain text. All attachments must be no larger than 10MB and must be a **.png, .pdf, .gif, .jpg, .jpeg, .doc, .docx, .xls, .xlsx, .ppt, .rtf, .pptx, .txt** or **.bmp** file.

Collection Notice

Your personal information is collected by the Environmental Assessment Agency for the purpose of commenting on the *Castle Project* under the authority of s.26(c) of the [Freedom of Information and Protection of Privacy Act](#). In submitting your comment, you consent to your comment being published online and shared with the proponent. This consent is valid from this date forward and may be revoked by contacting the EAO representative below. Should you have any questions about this collection please contact:

Director, Digital Services
Environmental Assessment Office
836 Yates Street, Victoria, BC
epicsupport.eao@gov.bc.ca
(250) 356-7441

NEXT

Submit a Comment

Name *

Please make my name visible to the public.
All comments are submitted anonymously by default. Checking this option will display your Name on the public site.

I'm a Community Advisory Committee Member. [Learn More](#)

Location *

Your Comment *

[Drop files to attach, or browse.](#)

Accepted file types: jpg, jpeg, gif, png, bmp, doc, docx, xls, xlsx, ppt, pptx, pdf, txt, rtf

Individual file size limit: 10MB

No attached files.

BACK **SUBMIT**

Energy at work



FORTIS BC™

Tilbury Phase 2 LNG Expansion Project overview

June 18 and 23, 2020



Presenters



Courtney Hodson,
Community Relations Manager



Todd Smith, P.Eng. Senior Manager,
Business Development & Tech Assessment

FortisBC overview



30BY30 and our Clean Growth Pathway



Energy efficiency



Renewable
Natural Gas



Global LNG



Zero and
low carbon
transportation

What is LNG?



Lowering emissions with LNG



By connecting Tilbury to BC's power grid, we're producing LNG with among the lowest carbon intensity in the world



LNG from Tilbury can reduce greenhouse gas emissions by up to **50%** for industrial customers switching from coal for energy.



LNG from Tilbury can reduce greenhouse gas emissions from ships by up to **21%** and reduce particulate matter by up to **99%**

Tilbury LNG overview



- In operation since 1971
- Producing LNG for transport customers since 2009
- Producing LNG for overseas customers since 2017
- Storage and liquefaction expansion commissioned in 2018



Energy at work  FORTIS BC

Indigenous and Stakeholder engagement

FortisBC has been consulting with municipalities, provincial and federal governments, Indigenous groups, the public and other parties on the proposed Tilbury LNG facility since 2012.

Engagement Principles

- Timely and relevant updates
- Solicit and incorporate feedback
- Understand expectations and preferences
- Accessibility

Changing Realities

- COVID-19
- Extensions
- Virtual engagement



Tilbury Phase 2 Project overview



Phase 2 expansion objectives

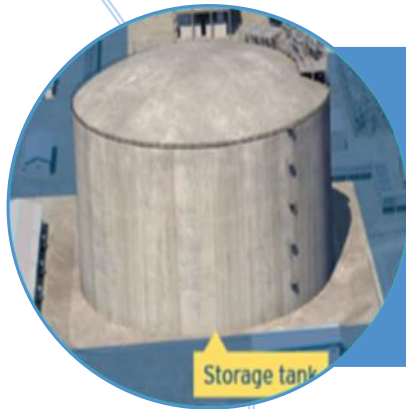


Improve gas system resiliency



Grow marine use and exports for BC LNG

Phase 2 expansion components



LNG storage tank: Up to 162,000 cubic meters (approx. 4 petajoules)



LNG production: Up to 11,000 tonnes per day (~3.5 million tonnes per annum)

Ancillary components

Natural gas receiving

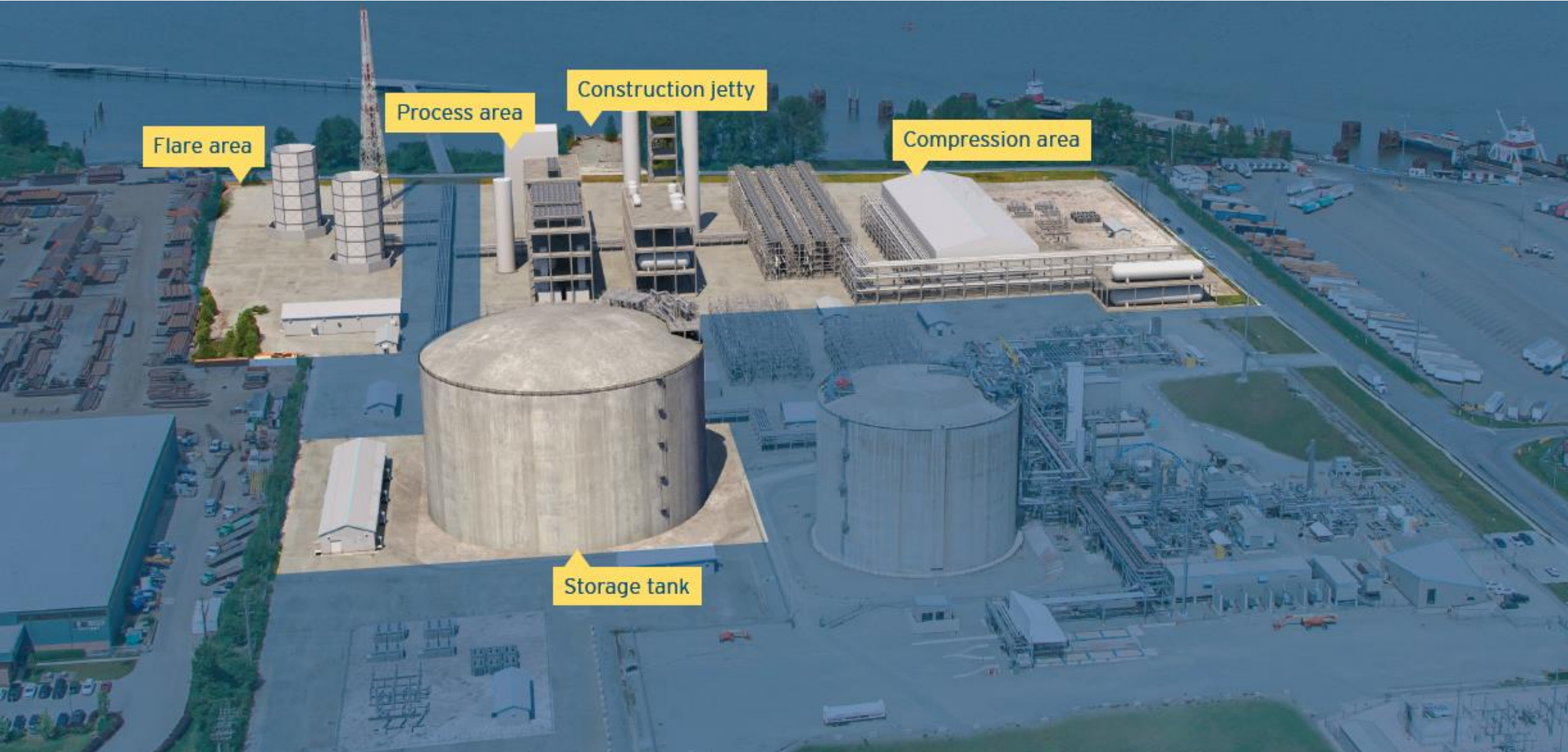
- Existing FortisBC pipelines and right of way will be used to bring natural gas to the Project site.
- Additional distribution infrastructure will be needed on site

Supporting infrastructure

- Permanent facilities including administrative, electrical, chemical storage and water systems
- Temporary construction components



Preliminary Phase 2 expansion layout



Preliminary Project Schedule

Task / Milestone	Timing
Submit IPD and Engagement Plan	February 2020
COVID-19 extension request	60 days (before start of Public Comment)
Submit Detailed Project Description	Q4 2020
Submit draft Assessment Application	Q2 2021
Submit final Assessment Application	Q3/Q4 2021
Synchronous/concurrent Permitting	Late 2021 and 2022
Anticipated EA Certificate/Approval	Q1/Q2 2022
Begin Final Engineering and Construction	2022
LNG Storage Tank In-Service	2024/25
Phase 2 Liquefaction In-Service	2024 to 2028

Physical Environment

- Site located between Fraser River and Tilbury Slough
- The site is drained by a series of drainage ditches
- A dyke maintained by the City of Delta is between the Fraser River and the site
- Construction will occur primarily in upland areas away from river and slough except for use and potential upgrades of a temporary construction jetty



Biological Environment

- Most vegetation was removed during historical site development
- Wildlife habitat, water features and fish habitat are limited
- A small, wetland with amphibian habitat is present on the site
- Fish rearing habitat is present in riparian area next to the site
- Fraser River estuary is known to support 78 species of fish
- Consideration for riparian vegetation, fish and wildlife habitat will be required for use and potential upgrades to the temporary construction jetty

Atmospheric Environment

- Short-term increase in noise, light, dust, and air emissions is expected during construction
- Noise, air quality and greenhouse gas modelling will determine potential effects during operations
- Noise and light impacts will be considered during design
- Equipment selection will consider air and greenhouse gas emissions to comply with 30BY30 target
- Metro Vancouver Air Permit will also be required

Economic, Social, Heritage and Health



- Wide range of economic benefits anticipated
- Increase in local traffic expected during construction
- Socio-economic effects on housing, infrastructure and services will be evaluated
- Additional archaeological investigations are underway
- Health effects could include short-term increases in noise, air emissions and dust during construction
- Noise and air quality assessments will be conducted to determine potential health effects during operations

Visual Quality



- Site is in an industrial area
- Visible from Fraser River and other areas within Delta and Richmond
- New buildings will be similar in design to existing
- Building design and placement of project components is in progress

Rendering of potential full buildout of Phase 1 and Phase 2 expansions

Facility safety



- Double-walled steel storage tank
- Spill containment systems
- On-site fire control
- Automatic and manual shutdown systems

Project benefits

- Hundreds of jobs during construction
- **110** long-term jobs during project operation
- Spinoff economic benefits for local businesses in construction, engineering and marine
- Local and Indigenous training opportunities
- Additional tax revenue for Delta, provincial government



Thank you



**For further information,
please contact:**

Tilbury project line: [1-855-576-7133](tel:1-855-576-7133)

Tilbury.Info@fortisbc.com

TalkingEnergy.ca/TilburyPhase2

Find FortisBC at:

Fortisbc.com



604-676-7000

Questions & Answers

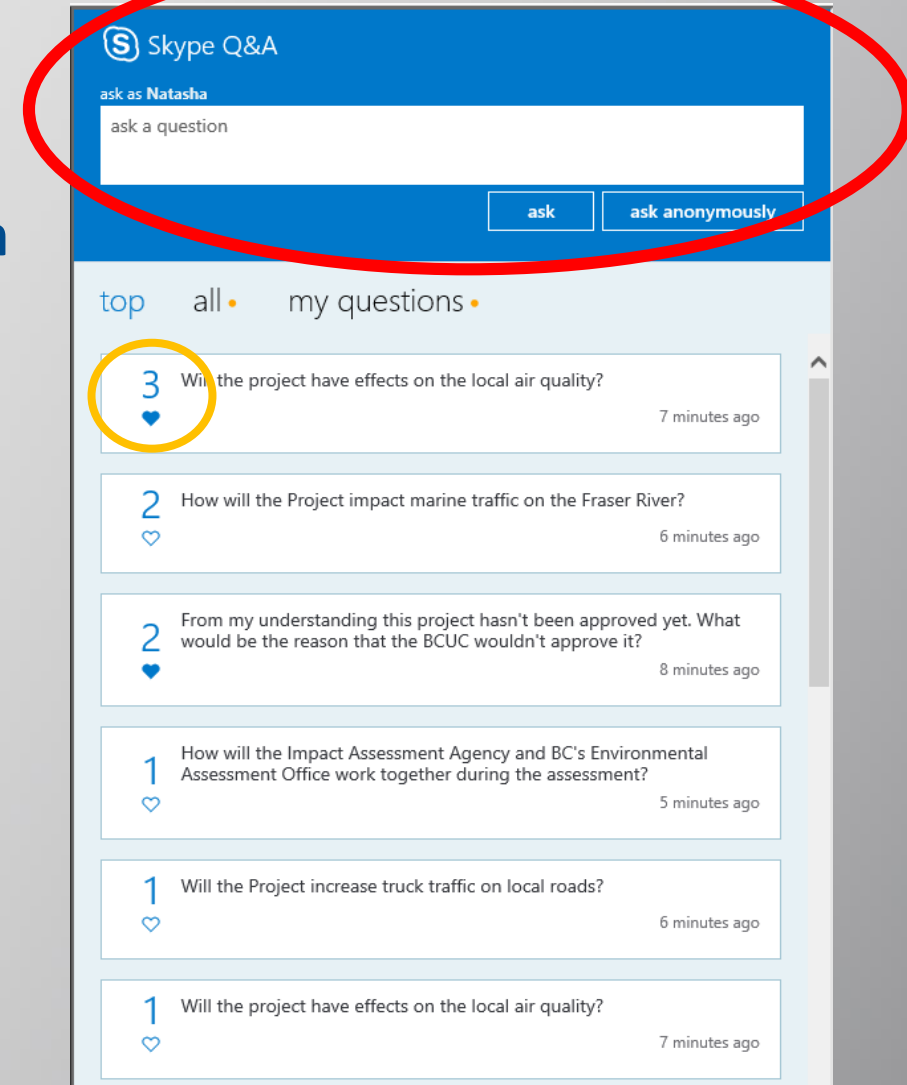
➤ To submit questions during this session on Skype Broadcast:

➤ To submit formal comments on the Project by July 16 :

www.projects.eao.gov.bc.ca

or

www.iaac-aeic.gc.ca



The screenshot shows the Skype Q&A interface. At the top, there is a blue header with the Skype logo and the text "Skype Q&A". Below the header, there is a text input field labeled "ask as Natasha" with the placeholder text "ask a question". To the right of the input field are two buttons: "ask" and "ask anonymously". Below the input field, there are three tabs: "top", "all", and "my questions". The main content area displays a list of questions and answers. The first question is "Will the project have effects on the local air quality?" with a count of 3 and a heart icon. The second question is "How will the Project impact marine traffic on the Fraser River?" with a count of 2 and a heart icon. The third question is "From my understanding this project hasn't been approved yet. What would be the reason that the BCUC wouldn't approve it?" with a count of 2 and a heart icon. The fourth question is "How will the Impact Assessment Agency and BC's Environmental Assessment Office work together during the assessment?" with a count of 1 and a heart icon. The fifth question is "Will the Project increase truck traffic on local roads?" with a count of 1 and a heart icon. The sixth question is "Will the project have effects on the local air quality?" with a count of 1 and a heart icon. The time elapsed for each question is shown on the right side of the question card.



EAO

Environmental
Assessment Office



Impact Assessment
Agency of Canada

Agence d'évaluation
d'impact du Canada

Next Steps

- Please provide your comments before July 16, 2020
- Comments are accepted via EAO and IAAC websites

www.projects.eao.gov.bc.ca

www.iaac-aeic.gc.ca

- Indicate your interest to the EAO in subscribing to the Community Advisory Committee.
- Respond to IAAC about your views on substitution



EAO

Environmental
Assessment Office



Impact Assessment
Agency of Canada

Agence d'évaluation
d'impact du Canada

Exit Survey

Please go to www.menti.com
and use the code 78 98 21



EAO

Environmental
Assessment Office



Impact Assessment
Agency of Canada

Agence d'évaluation
d'impact du Canada

**For more information please visit EAO and IAAC's
websites:**

**www.projects.eao.gov.bc.ca
www.iaac-aeic.gc.ca**

Or contact us at:

IAAC.TilburyLNG-GNLTilbury@Canada.ca



EAO

Environmental
Assessment Office



Impact Assessment
Agency of Canada

Agence d'évaluation
d'impact du Canada