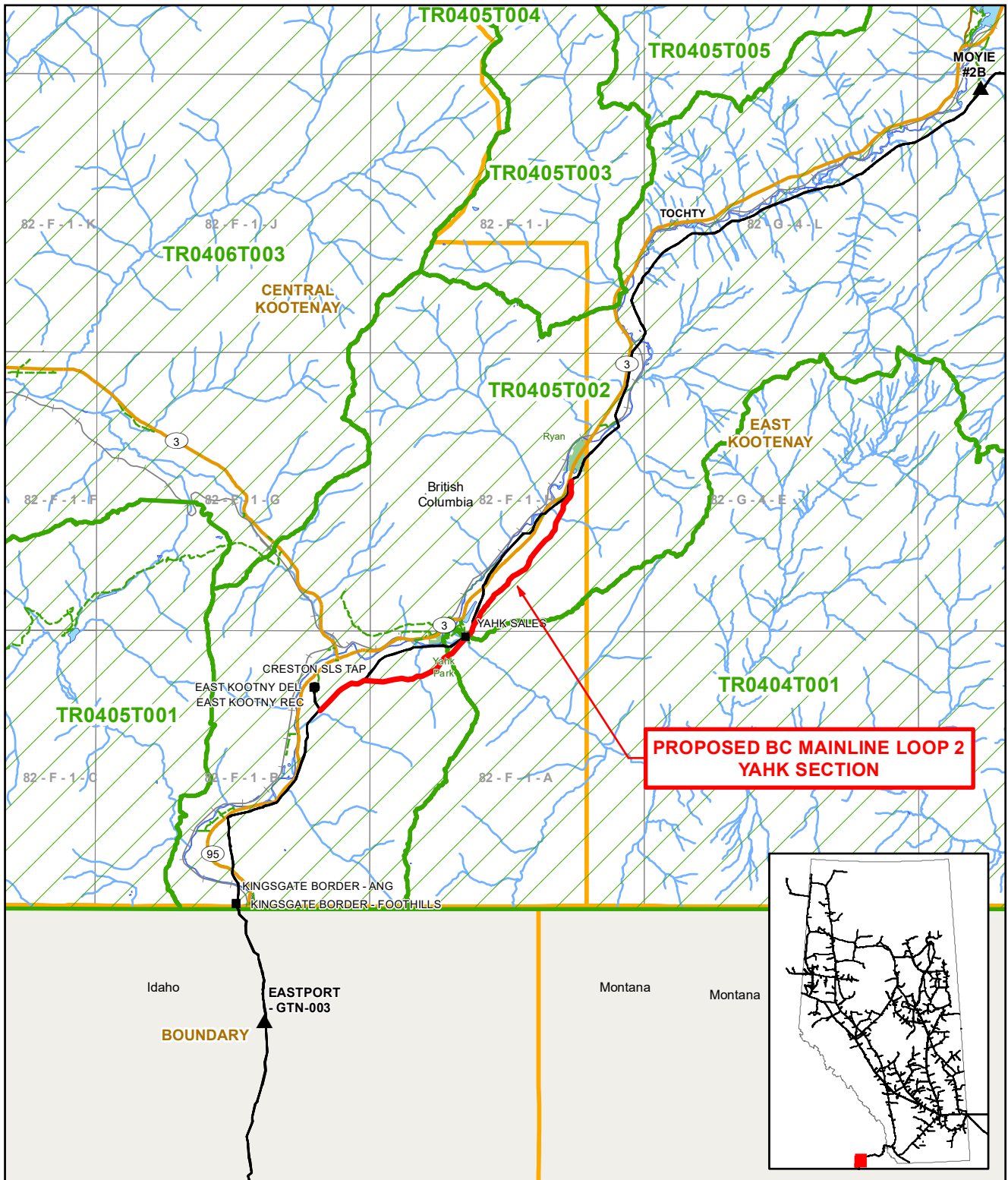


TERMS OF USE: The datasets used to create this map have been gathered from various sources for a specific purpose. TC Energy provides no warranty regarding the accuracy or completeness of the datasets. Unauthorized or improper use of this map, including supporting datasets is strictly prohibited. TC Energy accepts no liability whatsoever related to any loss or damages resulting from proper, improper, authorized or unauthorized use of this map and associated datasets and user expressly waives all claims relating to or arising out of use of or reliance on this map.

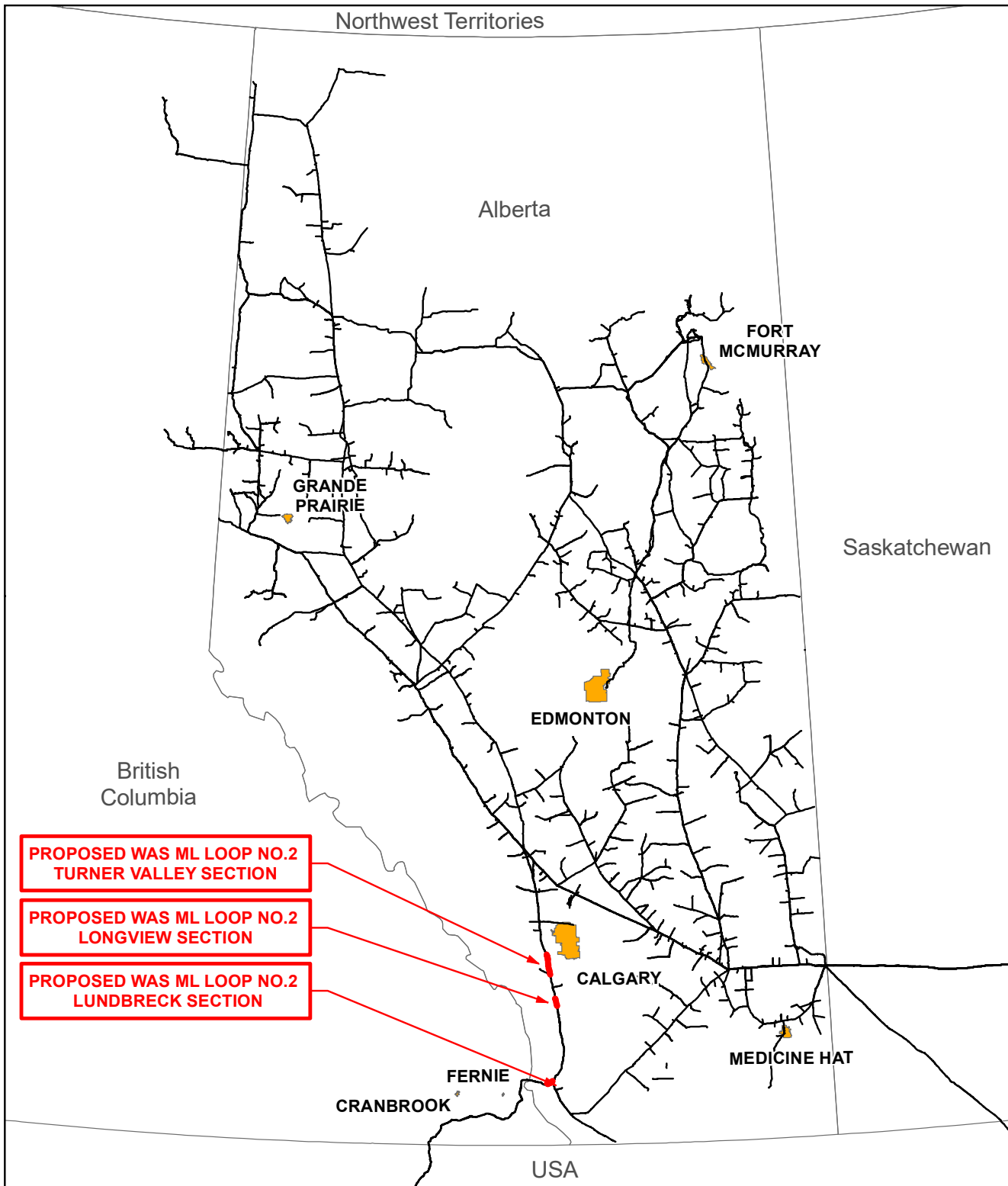
PROPOSED BC MAINLINE LOOP 2 YAHK SECTION			Proposed Pipeline Compressor Station Delivery Meter Station Receipt Meter Station Foothills Pipeline	Railway Gravel Road Primary Highway Secondary Highway	City / Town River / Lake First Nation Land Metis Settlement Protected Area Military Reserve County	N			
							LOCATION: 49.082, -116.085	REVISION: 0	ISSUED DATE: 19-09-23
Detail						COORDINATE SYSTEM: NAD 1983 UTM Zone 11N			
CARTOGRAPHER: EW	19-09-23					ISSUE PURPOSE: IFU			
REVIEWER: JC	19-09-23					0 3 6 km			
APPROVER: JC	19-09-23					MAP NUMBER: T_0228_0011_03_00_BC_M_Loop_Yahk_Sec_Fig1_rxd			

Not all legend elements may appear on the map



TERMS OF USE: The datasets used to create this map have been gathered from various sources for a specific purpose. TC Energy provides no warranty regarding the accuracy or completeness of the datasets. Unauthorized or improper use of this map, including supporting datasets is strictly prohibited. TC Energy accepts no liability whatsoever related to any loss or damages resulting from proper, improper, authorized or unauthorized use of this map and associated datasets and user expressly waives all claims relating to or arising out of use of or reliance on this map.

PROPOSED BC MAINLINE LOOP 2 YAHK SECTION Trapper			Not all legend elements may appear on the map	+ Railway - Gravel Road - Primary Highway - Secondary Highway - Foothills Pipeline	+ City / Town - River / Lake - First Nation Land - Metis Settlement - Protected Area - Military Reserve - County - Trapper Area				
							LOCATION: 49.082, -116.085	REVISION: 0	ISSUED DATE: 19-09-23
							COORDINATE SYSTEM: NAD 1983 UTM Zone 11N		ISSUE PURPOSE: IFU
							0 3 6 km 		
MAP NUMBER: T_028_0011_04_00_BC_ML_Loop_Yahk_Sec_Fig1_rxd									



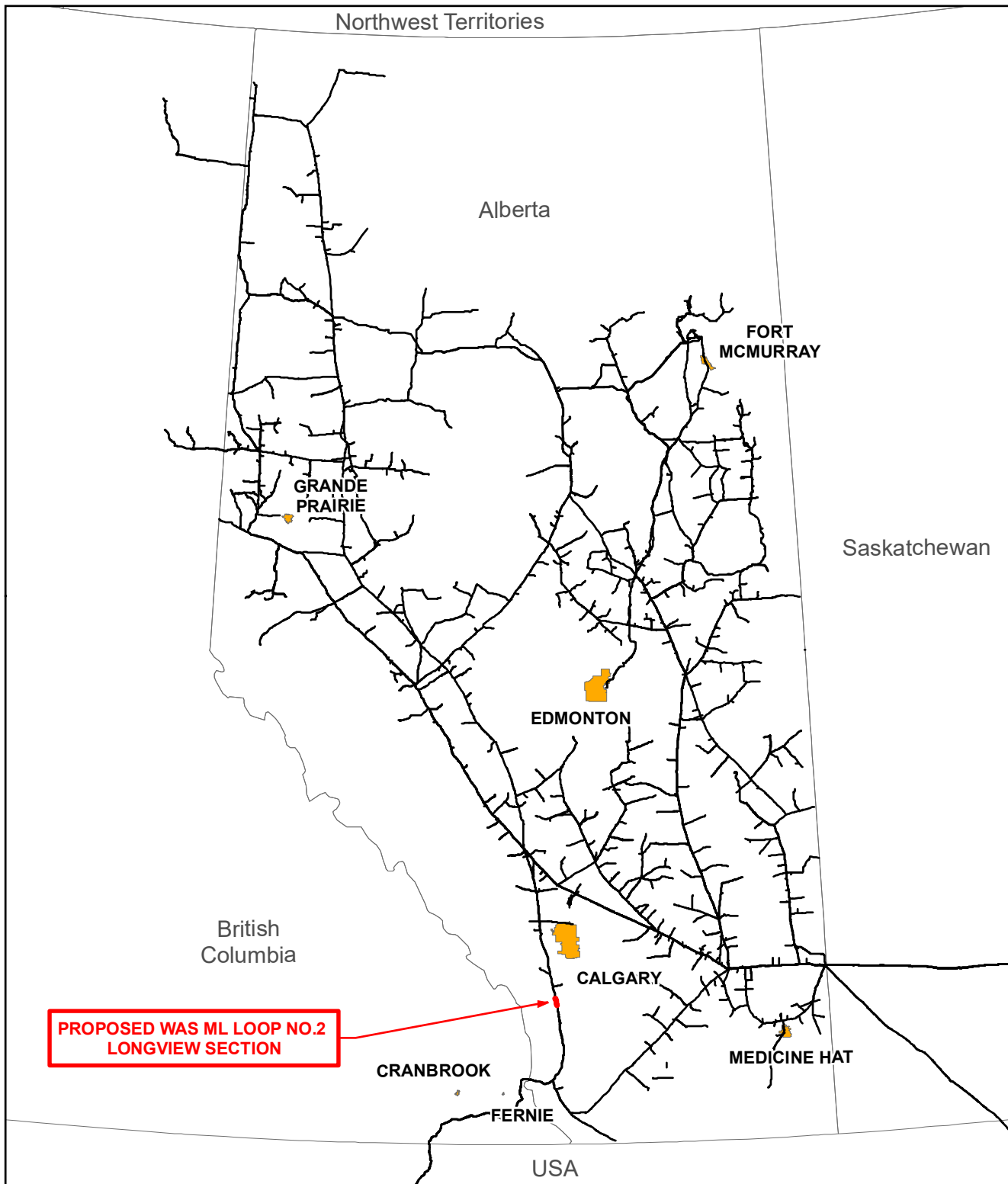
TERMS OF USE: The datasets used to create this map have been gathered from various sources for a specific purpose. TC Energy provides no warranty regarding the accuracy or completeness of the datasets. Unauthorized or improper use of this map, including supporting datasets is strictly prohibited. TC Energy accepts no liability whatsoever related to any loss or damages resulting from proper, improper, authorized or unauthorized use of this map and associated datasets and user expressly waives all claims relating to or arising out of use of or reliance on this map.

NGTL WEST PATH DELIVERY 2023 PROGRAM		
Global		
CARTOGRAPHER:	EW	20-01-27
REVIEWER:	JC	20-01-27
APPROVER:	JC	20-01-27

- Proposed Pipeline
- TC Energy Pipeline
- City / Town

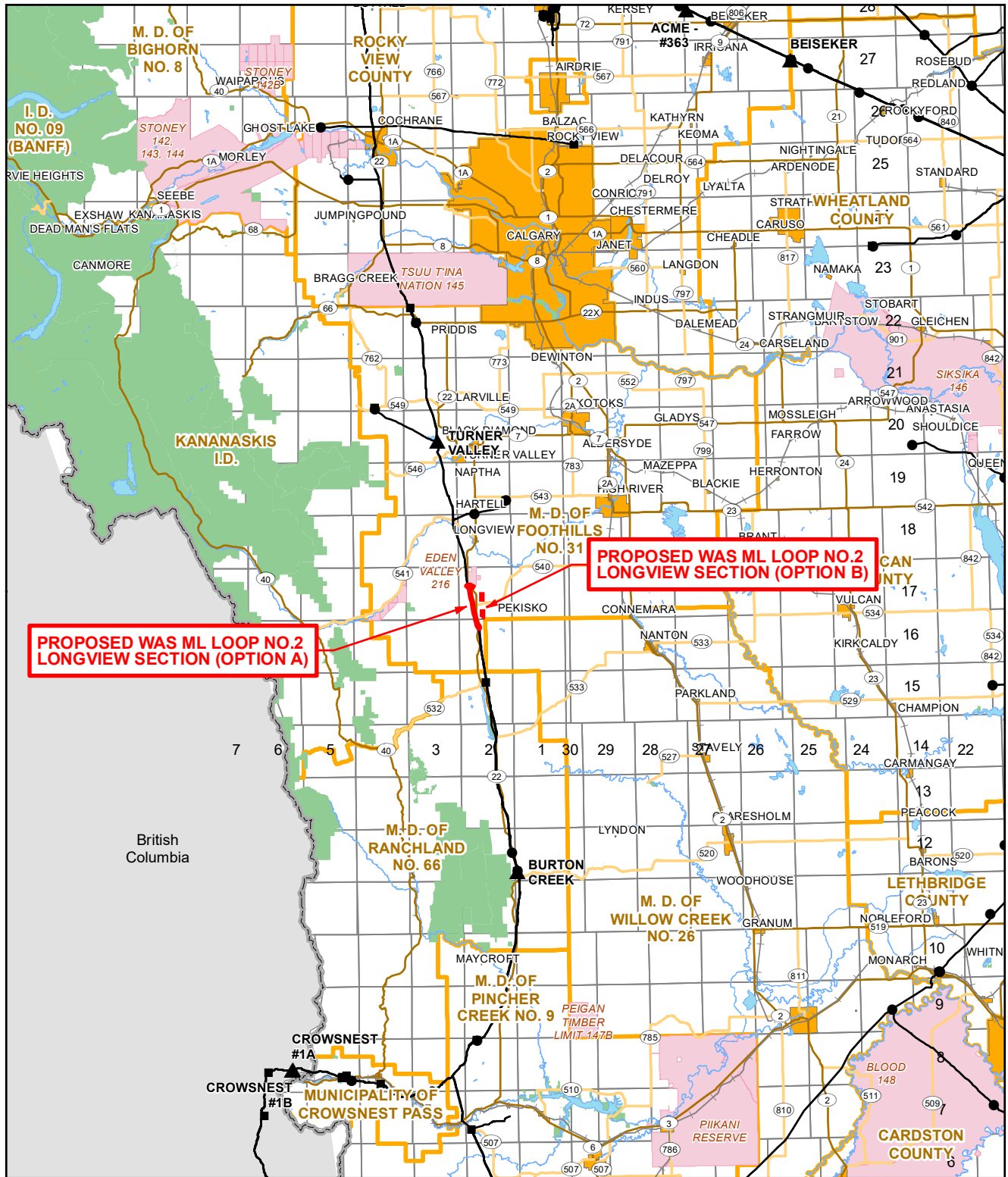


LOCATION:	REVISION: C	ISSUED DATE: 20-01-27
COORDINATE SYSTEM: NAD 1983 UTM Zone 11N		ISSUE PURPOSE: IFU
FILE NAME: T_0228_NGTLWestPathDelivery2023_Program_RevC.mxd		



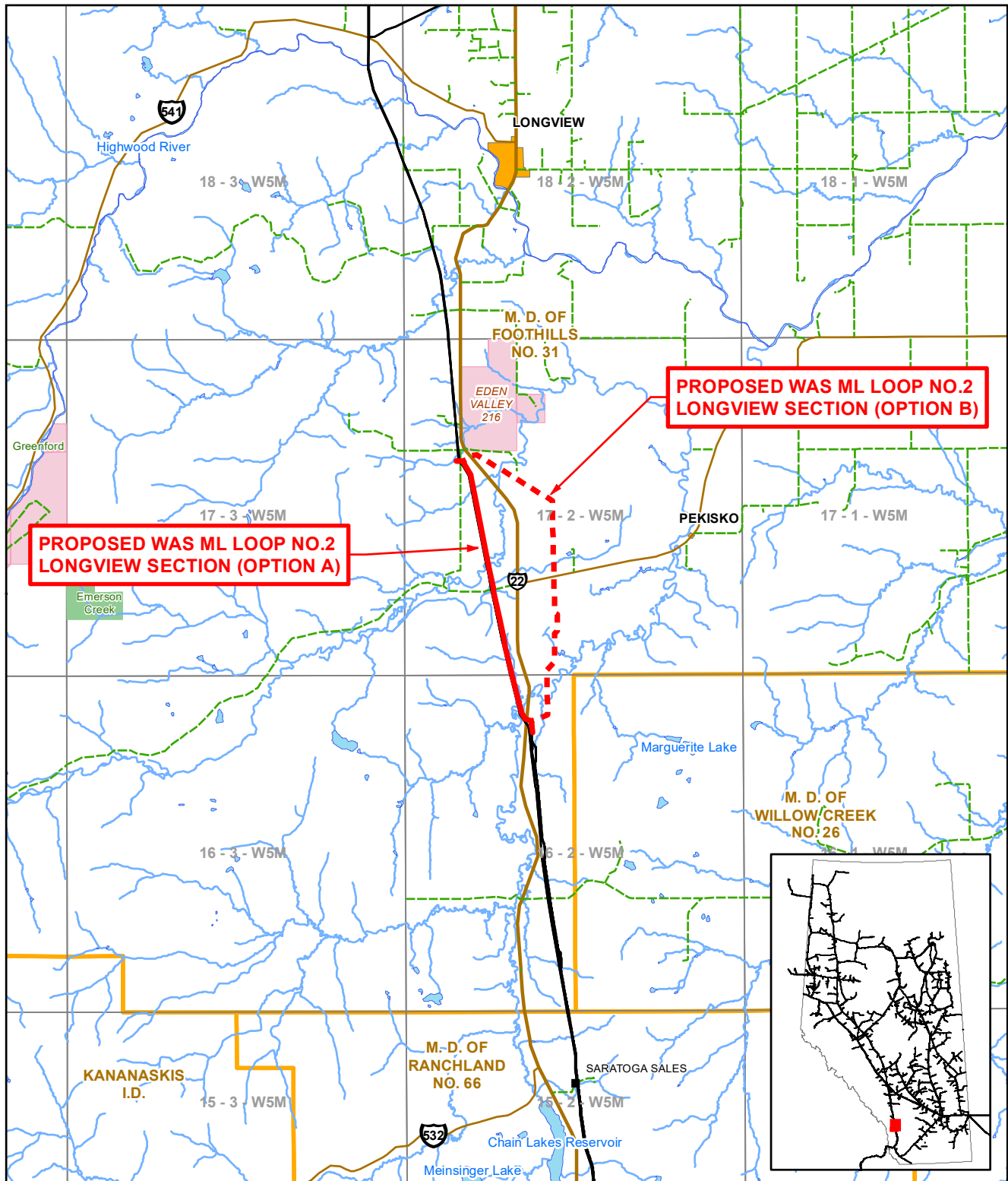
TERMS OF USE: The datasets used to create this map have been gathered from various sources for a specific purpose. TC Energy provides no warranty regarding the accuracy or completeness of the datasets. Unauthorized or improper use of this map, including supporting datasets is strictly prohibited. TC Energy accepts no liability whatsoever related to any loss or damages resulting from proper, improper, authorized or unauthorized use of this map and associated datasets and user expressly waives all claims relating to or arising out of use of or reliance on this map.

PROPOSED WAS ML LOOP NO.2 LONGVIEW SECTION					
Global					
CARTOGRAPHER:	EW	19-09-20	LOCATION: 50.419, -114.239 REVISION: 0 ISSUED DATE: 19-09-20 COORDINATE SYSTEM: NAD 1983 UTM Zone 11N ISSUE PURPOSE: IFU		
REVIEWER:	JC	19-09-20	0 25 50 100 150 200 250 km 		
APPROVER:	JC	19-09-20	FILE NAME: T_0228_0003_01_00_WAS_Longview_Sec_Ftj1_NEWCOMP.mxd		



TERMS OF USE: The datasets used to create this map have been gathered from various sources for a specific purpose. TC Energy provides no warranty regarding the accuracy or completeness of the datasets. Unauthorized or improper use of this map, including supporting datasets is strictly prohibited. TC Energy accepts no liability whatsoever related to any loss or damages resulting from proper, improper, authorized or unauthorized use of this map and associated datasets and user expressly waives all claims relating to or arising out of use of or reliance on this map.

PROPOSED WAS ML LOOP NO.2 LONGVIEW SECTION			<ul style="list-style-type: none"> — Proposed Pipeline ▲ Compressor Station ■ Delivery Meter Station ● Receipt Meter Station — TC Energy Pipeline 	<ul style="list-style-type: none"> — Railway — Primary Highway — Secondary Highway — City / Town — First Nation Lands — Metis Settlement — Military Reserve — County 	<ul style="list-style-type: none"> — River / Lake — Protected Area 										
<table border="1"> <tr> <td colspan="3">Regional</td> </tr> <tr> <td>CARTOGRAPHER:</td> <td>EW</td> <td>19-10-01</td> </tr> <tr> <td>REVIEWER:</td> <td>JC</td> <td>19-10-01</td> </tr> <tr> <td>APPROVER:</td> <td>JC</td> <td>19-10-01</td> </tr> </table>							Regional			CARTOGRAPHER:	EW	19-10-01	REVIEWER:	JC	19-10-01
Regional															
CARTOGRAPHER:	EW	19-10-01													
REVIEWER:	JC	19-10-01													
APPROVER:	JC	19-10-01													



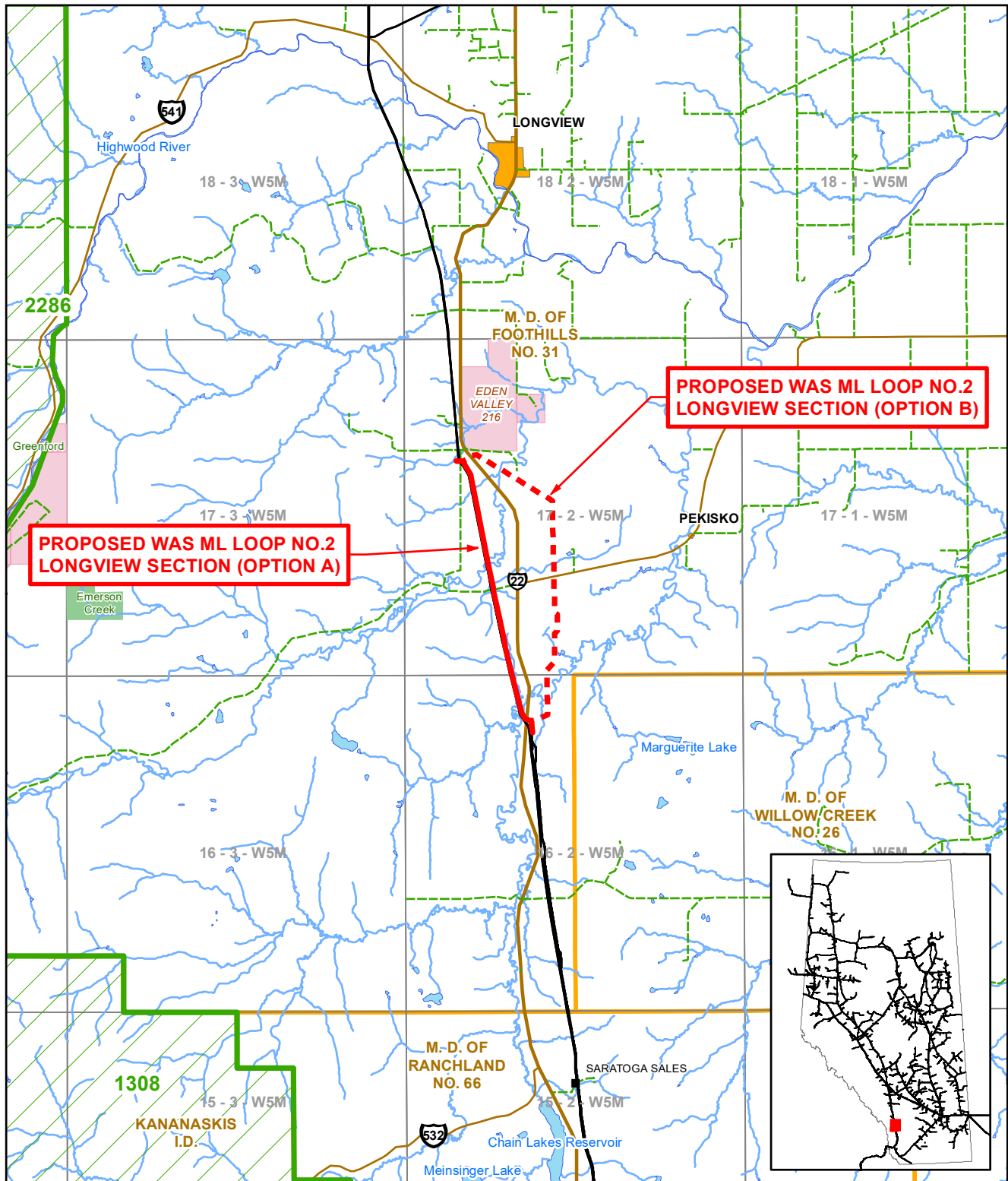
**PROPOSED WAS ML LOOP NO.2
 LONGVIEW SECTION (OPTION A)**

**PROPOSED WAS ML LOOP NO.2
 LONGVIEW SECTION (OPTION B)**

TERMS OF USE: The datasets used to create this map have been gathered from various sources for a specific purpose. TC Energy provides no warranty regarding the accuracy or completeness of the datasets. Unauthorized or improper use of this map, including supporting datasets is strictly prohibited. TC Energy accepts no liability whatsoever related to any loss or damages resulting from proper, improper, authorized or unauthorized use of this map and associated datasets and user expressly waives all claims relating to or arising out of use of or reliance on this map.

PROPOSED WAS ML LOOP NO.2 LONGVIEW SECTION			<ul style="list-style-type: none"> — Proposed Pipeline ■ Delivery Meter Station ● Receipt Meter Station — NGTL Pipeline —+— Railway — Gravel Road — Primary Highway — Secondary Highway ■ City / Town ■ River / Lake ■ First Nation Land ■ Metis Settlement ■ Protected Area ■ Military Reserve ■ County 		
Detail					
CARTOGRAPHER:	EW	19-10-01	LOCATION: 50.419, -114.239 REVISION: 0 ISSUED DATE: 19-10-01 COORDINATE SYSTEM: NAD 1983 UTM Zone 11N ISSUE PURPOSE: IFU 0 3 6 km MAP NUMBER: T_0228_0003_03_00_WAS_Longview_Sec_Fig1_mxd		
REVIEWER:	JC	19-10-01			
APPROVER:	JC	19-10-01			

Not all legend elements may appear on the map

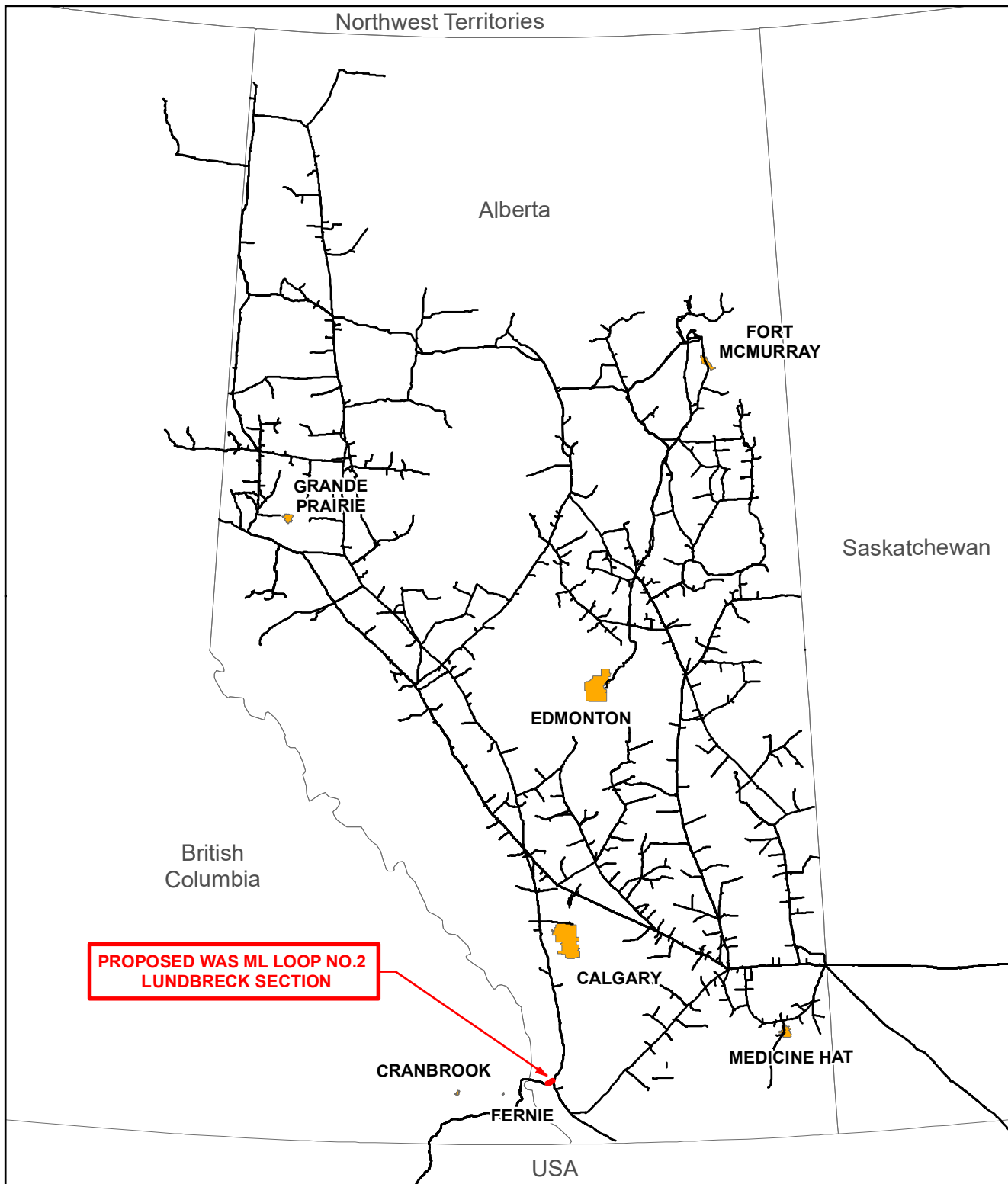


TERMS OF USE: The datasets used to create this map have been gathered from various sources for a specific purpose. TC Energy provides no warranty regarding the accuracy or completeness of the datasets. Unauthorized or improper use of this map, including supporting datasets is strictly prohibited. TC Energy accepts no liability whatsoever related to any loss or damages resulting from proper, improper, authorized or unauthorized use of this map and associated datasets and user expressly waives all claims relating to or arising out of use of or reliance on this map.

PROPOSED WAS ML LOOP NO.2 LONGVIEW SECTION Trapper			Proposed Pipeline Delivery Meter Station Receipt Meter Station NGTL Pipeline	Railway Gravel Road Primary Highway Secondary Highway	City / Town River / Lake First Nation Land Metis Settlement Protected Area Military Reserve County Trapper Area	N 0 3 6 km		LOCATION: 50.419, -114.239	REVISION: 0	ISSUED DATE: 19-10-01
								CARTOGRAPHER: EW 19-10-01	REVIEWER: JC 19-10-01	APPROVER: JC 19-10-01

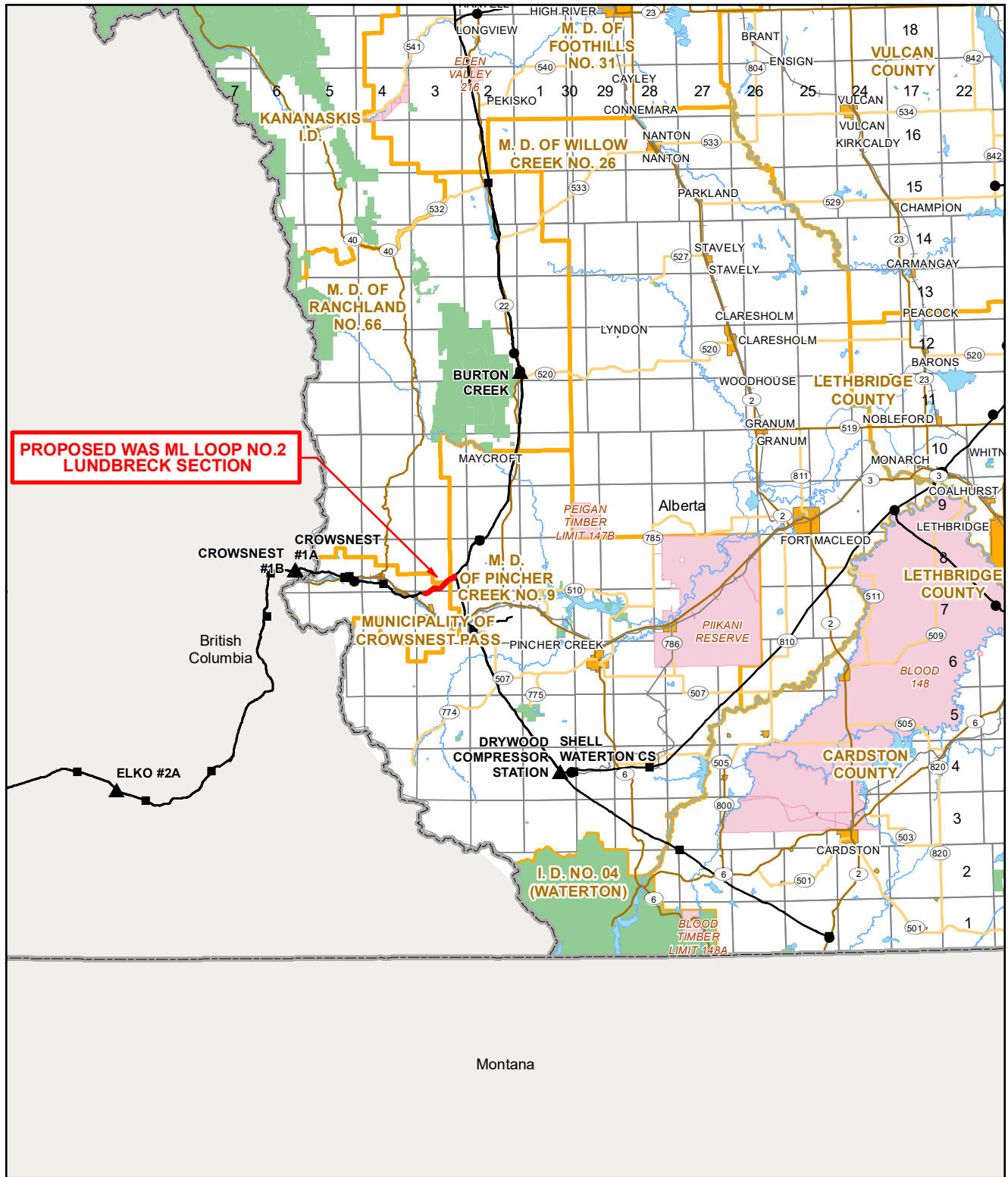
Not all legend elements may appear on the map

MAP NUMBER:
 T_0228_0003_04_00_WAS_Longview_Sec_Fig1_mxd



TERMS OF USE: The datasets used to create this map have been gathered from various sources for a specific purpose. TC Energy provides no warranty regarding the accuracy or completeness of the datasets. Unauthorized or improper use of this map, including supporting datasets is strictly prohibited. TC Energy accepts no liability whatsoever related to any loss or damages resulting from proper, improper, authorized or unauthorized use of this map and associated datasets and user expressly waives all claims relating to or arising out of use of or reliance on this map.

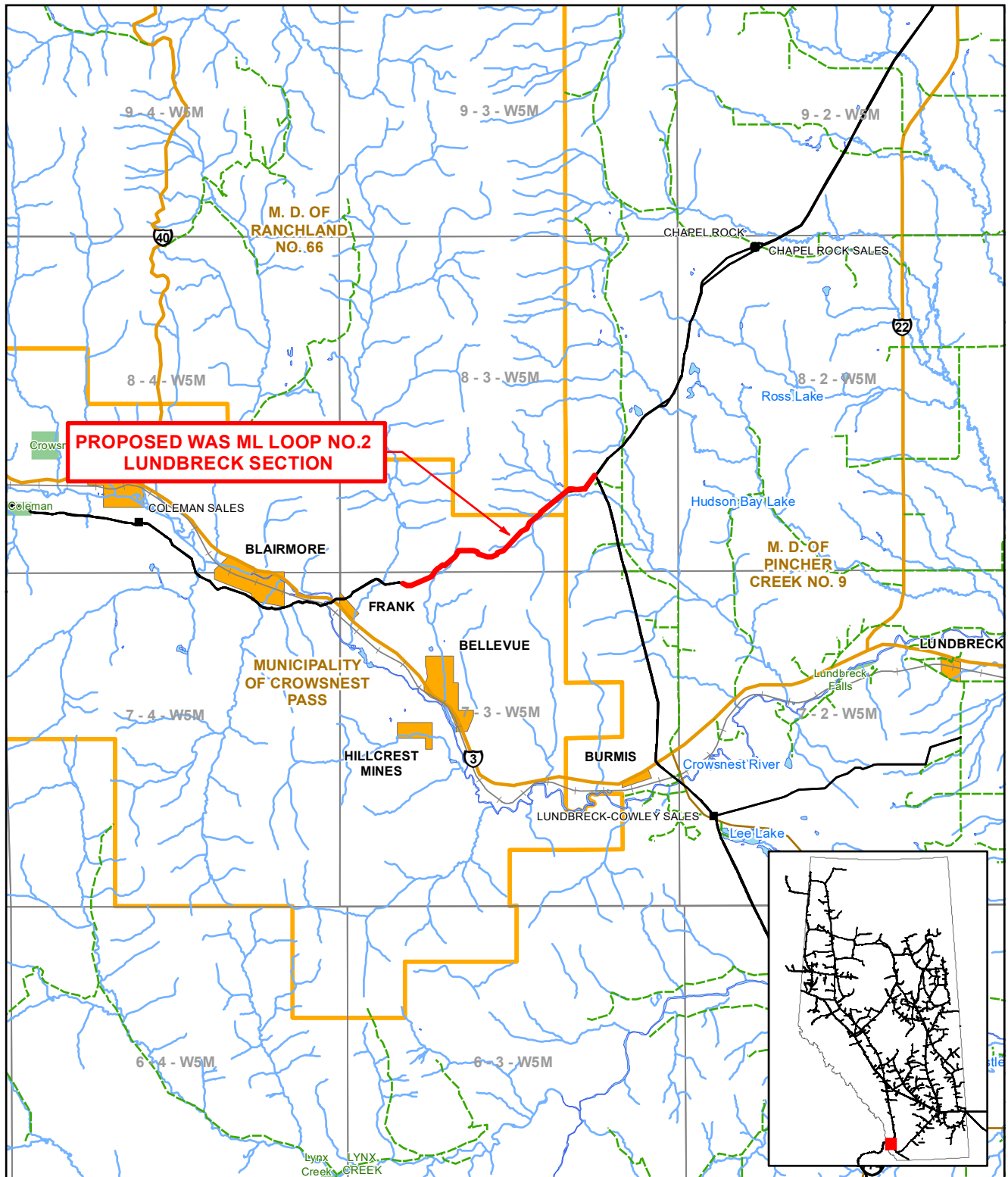
PROPOSED WAS ML LOOP NO.2 LUNDBRECK SECTION					
Global					
CARTOGRAPHER:	EW	19-09-19	LOCATION: 49.620, -114.338 REVISION: 0 ISSUED DATE: 19-09-19 COORDINATE SYSTEM: NAD 1983 UTM Zone 11N ISSUE PURPOSE: IFU		
REVIEWER:	JC	19-09-19	0 25 50 100 150 200 250 km 		
APPROVER:	JC	19-09-19	FILE NAME: T_0228_0003_01_00_WAS_Lundbreck_Sec_Fig1_mxd		



TERMS OF USE: The datasets used to create this map have been gathered from various sources for a specific purpose. TC Energy provides no warranty regarding the accuracy or completeness of the datasets. Unauthorized or improper use of this map, including supporting datasets is strictly prohibited. TC Energy accepts no liability whatsoever related to any loss or damages resulting from proper, improper, authorized or unauthorized use of this map and associated datasets and user expressly waives all claims relating to or arising out of use of or reliance on this map.

PROPOSED WAS ML LOOP NO.2 LUNDBRECK SECTION Regional			— Proposed Pipeline ▲ Compressor Station ■ Delivery Meter Station ● Receipt Meter Station — NGTL Pipeline	— Railway — Primary Highway — Secondary Highway	— River / Lake — Protected Area — City / Town — First Nation Lands — Metis Settlement — Military Reserve — County		
CARTOGRAPHER: EW	19-09-20	REVIEWER: JC	19-09-20	COORDINATE SYSTEM: NAD 1983 UTM Zone 11N		ISSUE PURPOSE: IFU	
APPROVER: JC	19-09-20	MAP NUMBER: T_0228_0003_02_00_WAS_Lumbreck_Sec_Fig1_mxd					

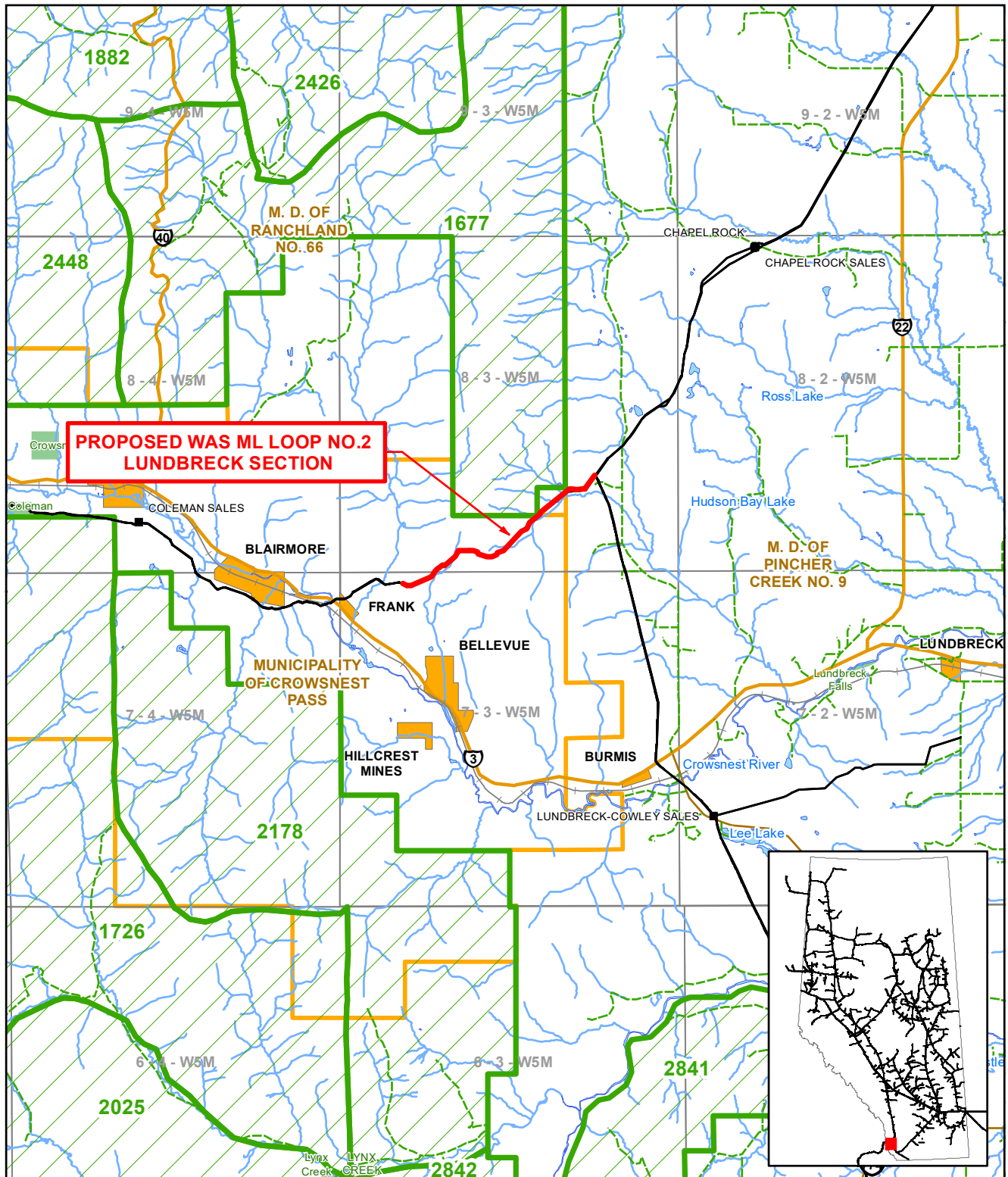
Not all legend elements may appear on the map



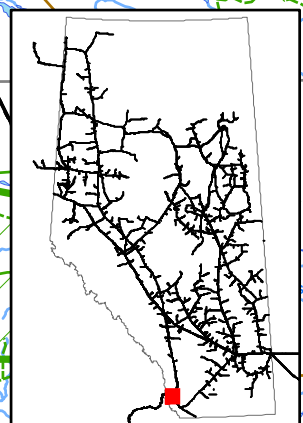
**PROPOSED WAS ML LOOP NO.2
 LUNDBRECK SECTION**

TERMS OF USE: The datasets used to create this map have been gathered from various sources for a specific purpose. TC Energy provides no warranty regarding the accuracy or completeness of the datasets. Unauthorized or improper use of this map, including supporting datasets is strictly prohibited. TC Energy accepts no liability whatsoever related to any loss or damages resulting from proper, improper, authorized or unauthorized use of this map and associated datasets and user expressly waives all claims relating to or arising out of use of or reliance on this map.

PROPOSED WAS ML LOOP NO.2 LUNDBRECK SECTION					
Detail			Not all legend elements may appear on the map		
CARTOGRAPHER:	EW	19-09-19			
REVIEWER:	JC	19-09-19			
APPROVER:	JC	19-09-19			



**PROPOSED WAS ML LOOP NO.2
 LUNDBRECK SECTION**



TERMS OF USE: The datasets used to create this map have been gathered from various sources for a specific purpose. TC Energy provides no warranty regarding the accuracy or completeness of the datasets. Unauthorized or improper use of this map, including supporting datasets is strictly prohibited. TC Energy accepts no liability whatsoever related to any loss or damages resulting from proper, improper, authorized or unauthorized use of this map and associated datasets and user expressly waives all claims relating to or arising out of use of or reliance on this map.

PROPOSED WAS ML LOOP NO.2 LUNDBRECK SECTION Trapper			Proposed Pipeline Delivery Meter Station Receipt Meter Station NGTL Pipeline	Railway Gravel Road Primary Highway Secondary Highway	City / Town River / Lake First Nation Land Metis Settlement Protected Area Military Reserve County Trapper Area	N	
CARTOGRAPHER: EW 19-09-19	REVIEWER: JC 19-09-19	APPROVER: JC 19-09-19	Not all legend elements may appear on the map				MAP NUMBER: T_0228_0003_04_00_WAS_Lundbreck_Sec_Fig1_mxd