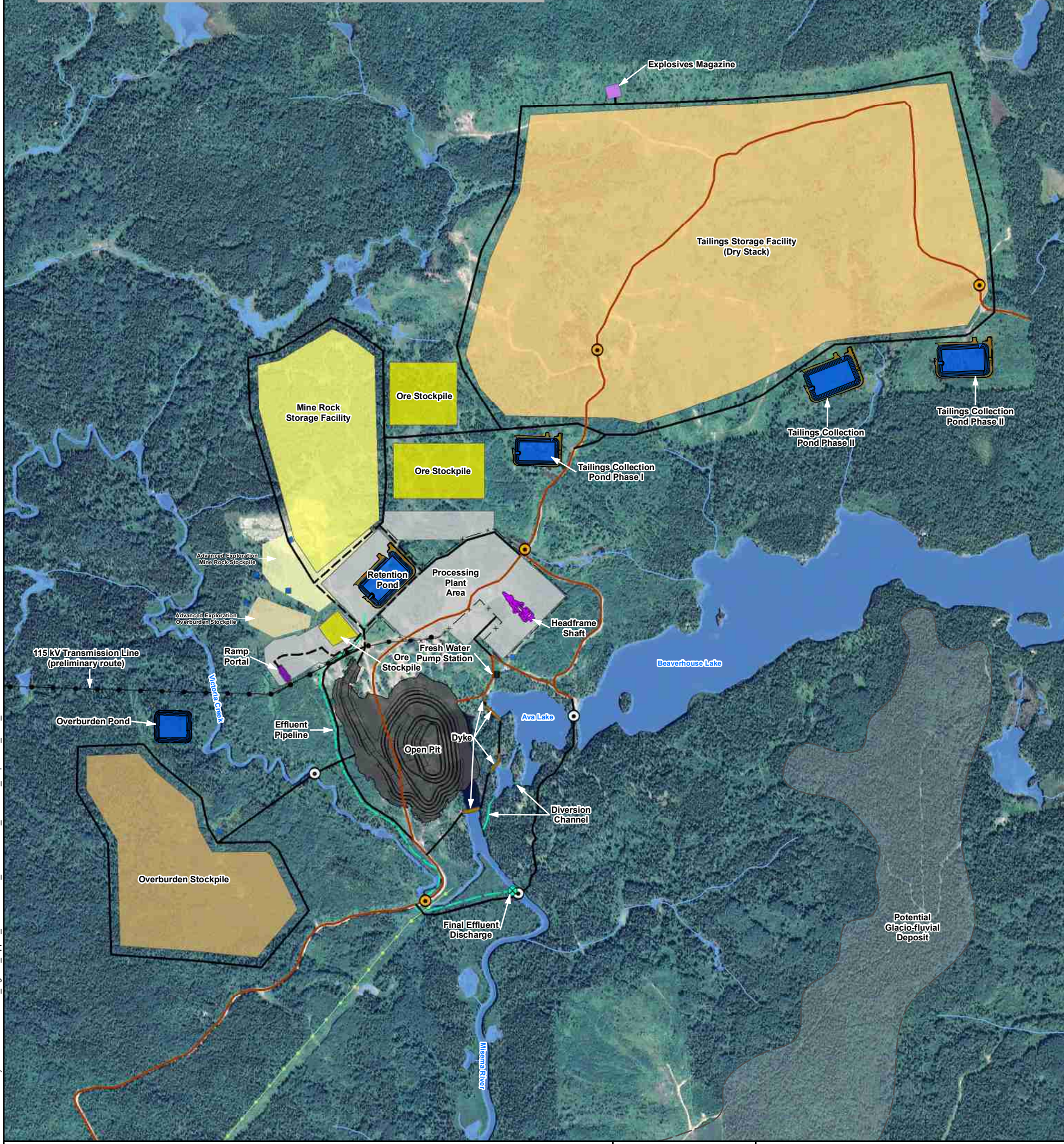


Enclosure 3.2 - Upper Beaver Gold Project - Project Area Maps

The enclosed maps were taken from the Detailed Project Description, submitted by Agnico Eagle Mines Limited.

The following maps are included:

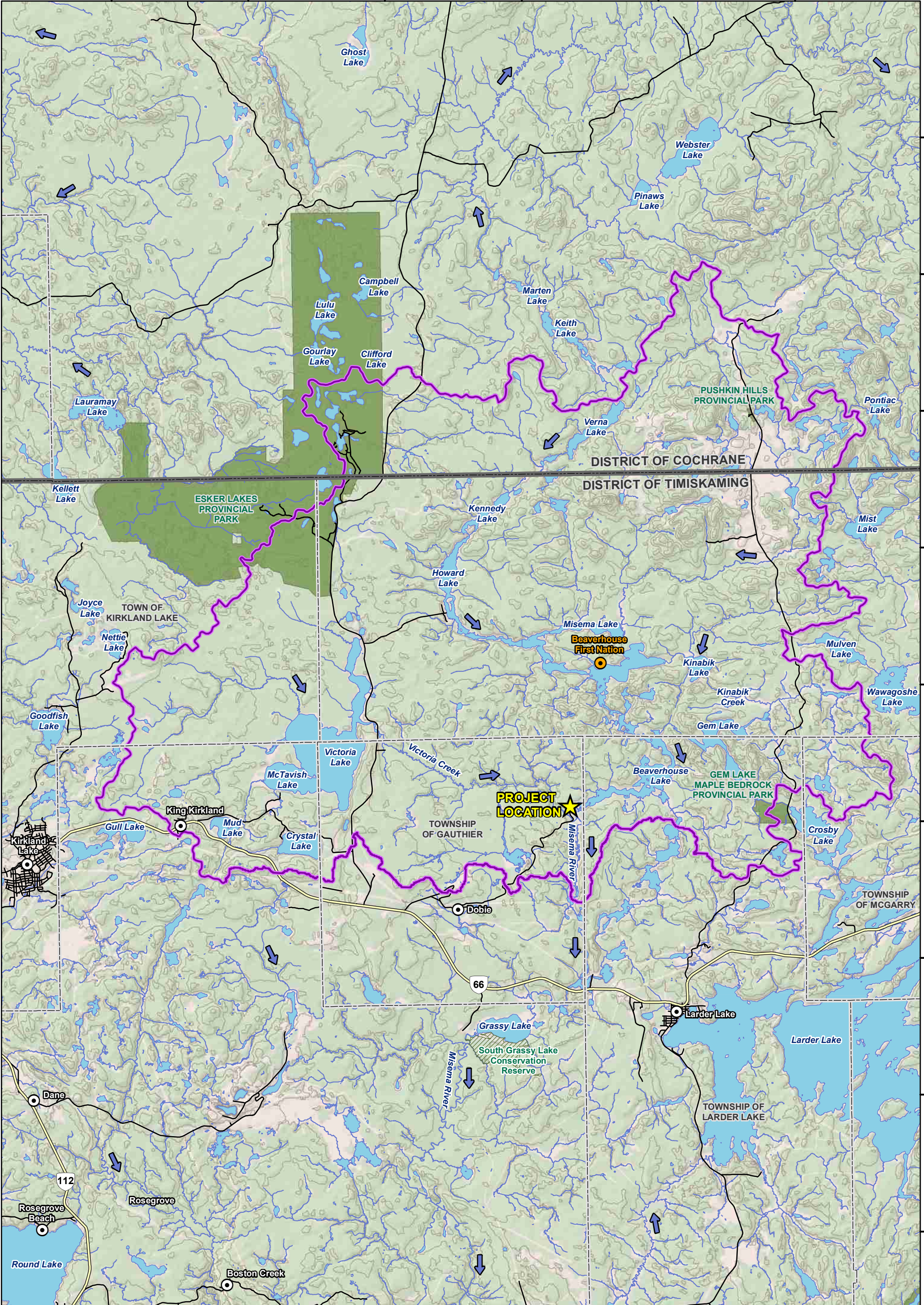
- Preliminary Site Plan
- Watershed Boundary
- Watercourses and waterbodies
- Wetlands and low-lying areas



LEGEND <ul style="list-style-type: none"> Open Pit Processing Plant Area Tailings Storage Facility Ore Stockpile Mine Rock Storage Facility Overburden Stockpile Overburden Pond Explosives Magazine Dyke Pond Diversion Channel Portal Ramp Headframe Shaft Fresh Water Pump Station Potential Glacio-fluvial Deposit 115 kV Transmission Line (preliminary route) Security Fence Effluent Pipeline Final Effluent Discharge Existing Road / Trail Advanced Exploration Road Proposed Road Potential Water Crossings (Culverts or Bridges) Existing Water Crossings Advanced Exploration Overburden Stockpile Advanced Exploration Mine Rock Stockpile 44 kV Existing Powerline 		NOTES: - Site plan layout shown was provided by Agnico Eagle, "005 Site Preparation 210 General Arrangement Plan Upper Beaver Site Layout (Production)" 30108-005-210-001_RF. - Waterbodies and watercourse extracted from LIO, NDMNRF and modified to match site plan layout provided by Agnico Eagle; to be field confirmed. - Aerial imagery extracted from Google Earth Pro, 2019.	 UPPER BEAVER PROJECT UPPER BEAVER GOLD PROJECT Preliminary Site Plan
Datum: NAD83 Projection: UTM Zone 17N		PROJECT N°: OMEMA2008 SCALE: 1:13,500	FIGURE: C.1 DATE: December 2021

P:\2020\Projects\OMEMA2008Z_Agnico_Upper_Beaver\IA\11_GIS\Detailed_PD\MXD_Maps\Site_Plan_15.mxd

575000 580000 585000 590000 595000 600000



P:\2020\Projects\OMEMA2008Z_Agnico_Upper_Beaver\IA\11_GIS\Detailed_PD\MXD_Maps\Watershed_1.mxd

LEGEND

- Project Location
- Watershed
- Town / Community
- First Nation Community
- Conservation Reserve
- Provincial Park
- Upper Tier Municipal Boundary
- Lower Tier Municipal Boundary
- Highway
- Local Road
- Resource / Recreation Road
- Contours (20 m intervals)
- Watercourse
- Waterbody
- Flow Direction

NOTES:
 - Waterbodies and watercourse extracted from LIO, NDMNRF and modified to match site plan layout provided by Agnico Eagle; to be field confirmed.
 - Watersheds extracted from LIO, NDMNRF and modified using the Ontario Flow Assessment Tool (OFAT), NDMNRF.

Datum: NAD83
 Projection: UTM Zone 17N

UPPER BEAVER GOLD PROJECT

Watershed Boundary

PROJECT N°: OMEMA2008 **FIGURE: D.3**

SCALE: 1:130,000 **DATE: December 2021**

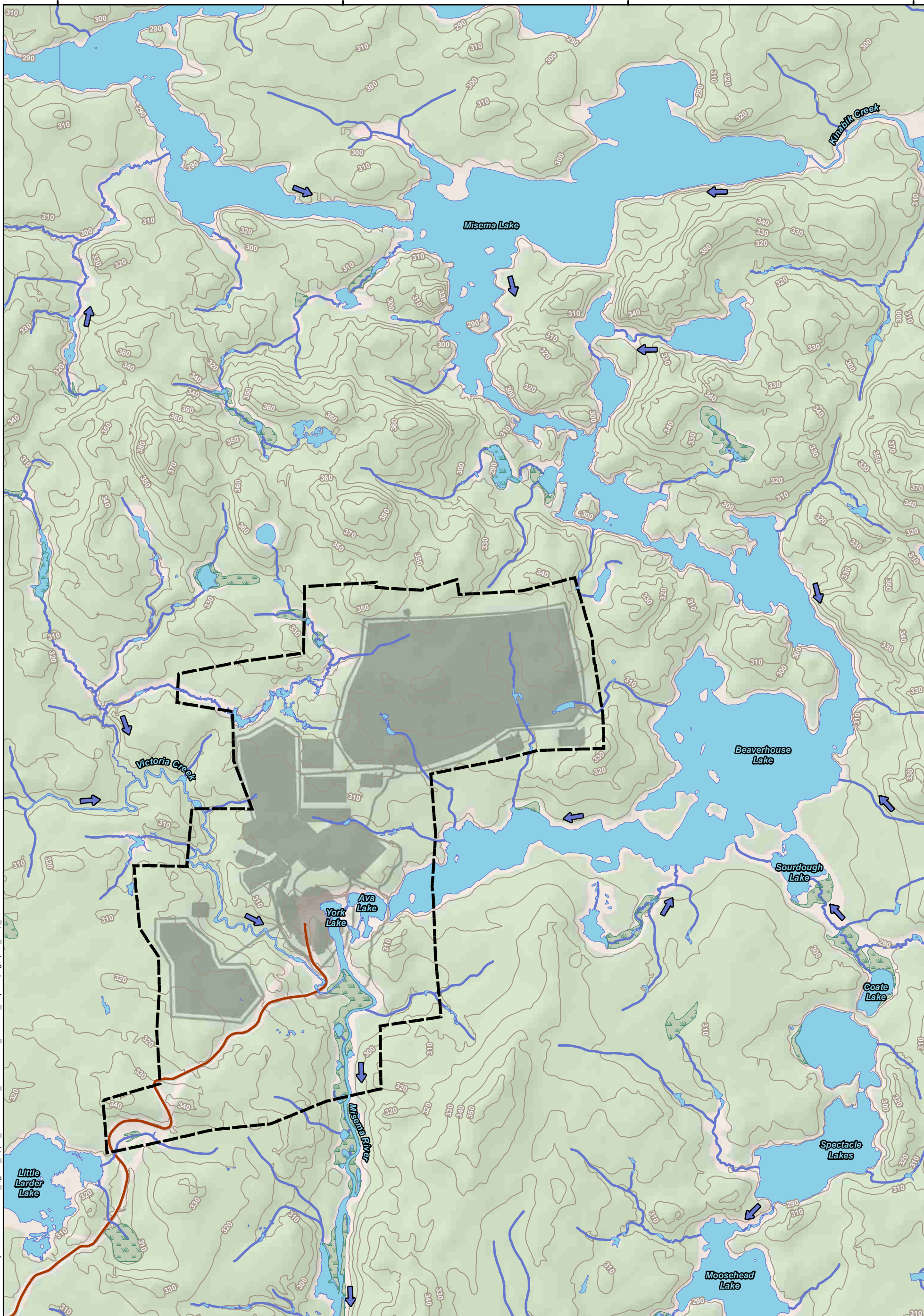


590000

592000

594000

596000



5340000








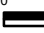
5338000

5336000

5334000

P:\2020\Projects\OMEMA2008Z_Agnico_Upper_Beaver\IA\11_GIS\Detailed_PD\MXD_Maps\Topographic_Map_2.mxd

LEGEND

-  Preliminary Project Boundary
-  Proposed Mine Feature
-  Low-lying Area
-  Watercourse
-  Waterbody
-  Existing Access Road
-  Contours (10 m intervals)
-  Flow Direction

NOTES:

- Site plan layout shown was provided by Agnico Eagle, "005 Site Preparation 210 General Arrangement Plan Upper Beaver Site Layout (Production)" 30108-005-210-001_RF.
- Waterbodies and watercourses extracted from LIO, NDMNRF and modified to match site plan layout provided by Agnico Eagle; to be field confirmed.

Datum: NAD83
Projection: UTM Zone 17N




UPPER BEAVER GOLD PROJECT

Watercourses and Waterbodies

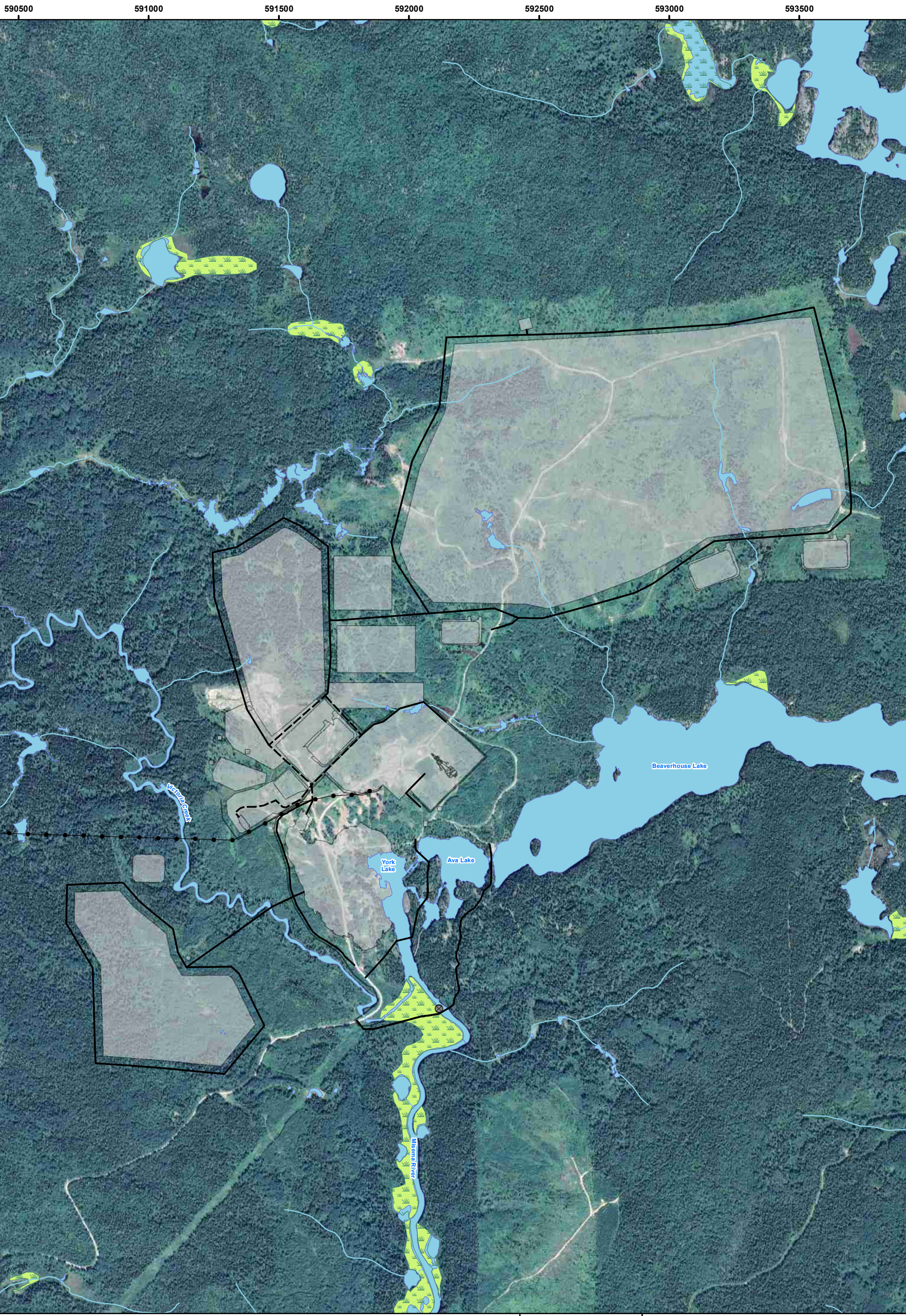
PROJECT N°: OMEMA2008

FIGURE: D.4

SCALE: 1:25,000

DATE: December 2021





P:\2020\Projects\OMEMA2008Z_Agnico_Upper_Beaver\IA\11_GIS\Detailed_PD\MXD_Maps\Wetlands_3.mxd

LEGEND 		NOTES: - Site plan layout shown was provided by Agnico Eagle, "005 Site Preparation 210 General Arrangement Plan Upper Beaver Site Layout (Production)" 30108-005-210-001_RF. - Waterbodies and watercourse extracted from LIO, NDMNRF and modified to match site plan layout provided by Agnico Eagle; to be field confirmed. - Aerial imagery extracted from Google Earth Pro, 2019.	 UPPER BEAVER GOLD PROJECT
Wetlands and Low-lying Areas			
Datum: NAD83 Projection: UTM Zone 17N			PROJECT N°: OMEMA2008 FIGURE: D.5
		SCALE: 1:13,500	DATE: December 2021