



How to Participate During the Federal Impact Assessment *Crawford Nickel Project*

Canada Nickel Company (the Proponent) is proposing the construction, operation, decommissioning and abandonment of an open-pit nickel-cobalt mine and on-site metal mill, located 43 kilometres north of Timmins, Ontario. As proposed, the Crawford Nickel Project (the Project) would have a mine ore production capacity of 275,000 tonnes per day and a mill ore input capacity of 120,000 tonnes per day. The Project would operate for about 43 years.

IMPACT ASSESSMENT AGENCY OF CANADA

The Impact Assessment Agency of Canada (the Agency) is a federal body accountable to the Minister of Environment and Climate Change. The Agency delivers high-quality impact assessments that contribute to informed decision-making on major projects in support of sustainable development.

The Agency is conducting an impact assessment process for this Project and would like to hear from you.

How can you participate?

You can **share your views** on the Project with the Proponent and the Agency, including but not limited to:

- project design, location, timelines, plans for construction and operation, baseline conditions, potential project effects, mitigation measures and cumulative effects;
- how the Project may affect your Nation's:
 - health, social, and economic conditions;
 - physical and cultural heritage, including any structure, site or thing that is of historical, archaeological, paleontological or architectural significance;
 - current use of lands and resources for traditional purposes; and
- how the Project may affect your Nation's exercise of rights that are protected under section 35 of the *Constitution Act, 1982*.

THE IMPORTANCE OF SHARING YOUR VIEWS WITH THE PROPONENT:

By sharing your views with the Proponent on the matters listed above as early as possible in the Impact Statement Phase, the Proponent will be able to integrate your Indigenous Knowledge into the Impact Statement for the Project, so that the Project could be designed to minimize impacts on your Nation.

How to Participate During the Federal Impact Assessment

Crawford Nickel Project

In order to help your Nation engage and share your views on the above, the Proponent will provide your Nation with an opportunity to:

- share **Indigenous Knowledge** during baseline data collection;
- comment on the list of **valued components and indicators**;
- inform the development of the **effects assessment**;
- inform the development of **mitigation and follow-up program measures**; and
- review the **effects assessment conclusions** and validate the **selected mitigation follow-up program measures**.

The Proponent will collaborate with Indigenous communities, as per section 6 of the **Tailored Impact Statement Guidelines**, collect available Indigenous Knowledge and expertise and integrate it into its Impact Statement, and support the participation of Indigenous communities in the completion of the Impact Statement.

THE IMPORTANCE OF SHARING YOUR VIEWS WITH THE AGENCY:

Your views can also help the Agency understand how the Project may impact your Nation and what measures the Proponent needs to propose to reduce or avoid the identified impact. The Agency uses the information provided by your Nation to direct the Proponent to adequately follow-up with your Nation and characterize potential impacts in the Proponent's Impact Statement. The Agency also uses the information provided by your Nation to inform the Agency's consultation efforts.

RESOURCES TO SUPPORT YOUR NATION'S PARTICIPATION

To help you think about what information to share with the Proponent and the Agency, please see the specific types of information under the **five key themes** outlined below:

- **health, social, and economic conditions;**
- **physical and cultural heritage;**
- **current use of lands and resources;**
- **impacts on the exercise of rights; and**
- **mitigation and enhancement measures.**

The Proponent will be engaging with your Nation to gather information under these **five key themes** in order to understand how the Project may impact your Nation and what measures the Proponent needs to propose to reduce or avoid the identified impacts.

In addition, the **map** provided in **Figure 1**, and the examples of **potential impacts** listed in **Figure 2**, may help you think about the impacts of the Project on these key themes.

How to Participate During the Federal Impact Assessment

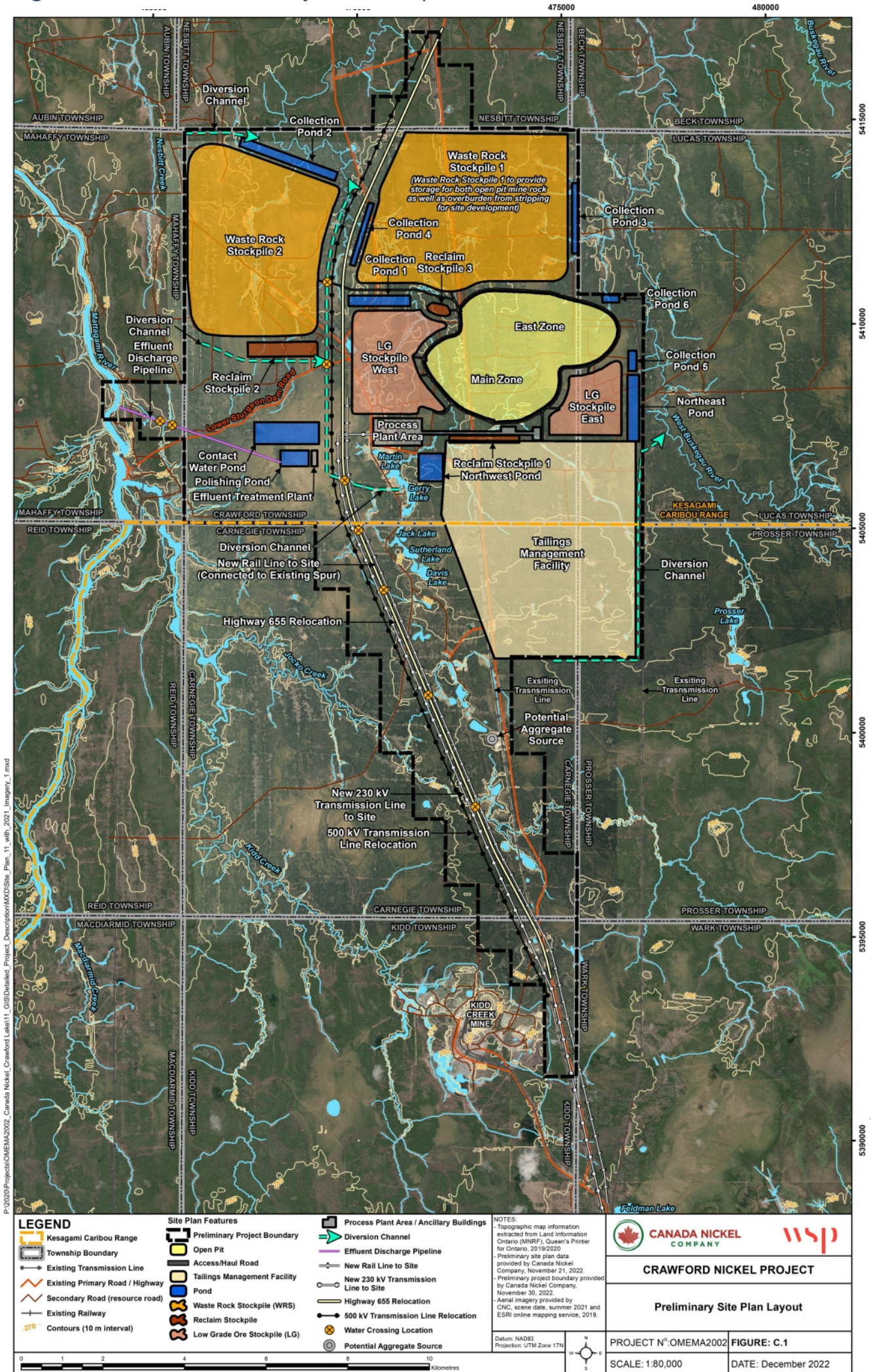
Crawford Nickel Project

For more information on these themes, please see the Agency's **Tailored Impact Statement Guidelines (Guidelines)**, which set out the requirements for the Proponent in preparing an Impact Statement, on the Canadian Impact Assessment Registry at: <https://iaac-aeic.gc.ca/050/evaluations/proj/83857>

How to Participate During the Federal Impact Assessment

Crawford Nickel Project

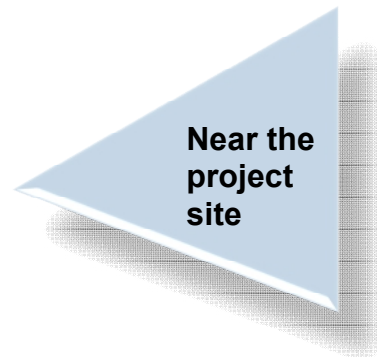
Figure 1: Crawford Nickel Project Site Map



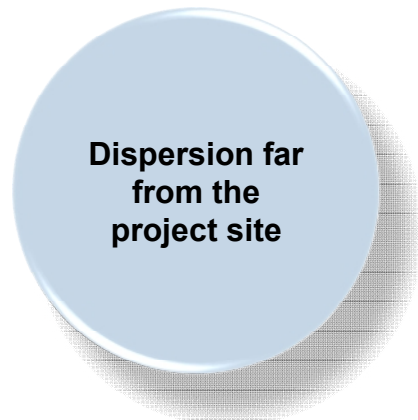
How to Participate During the Federal Impact Assessment

Crawford Nickel Project

Figure 2: Potential Impacts of the Project at different distances from the project site: near the project site, far from the project site, and complex changes far from the project site



- Loss of terrestrial and aquatic habitat
- Release of contaminants (contained within project footprint)
- Loss of sites of cultural importance (gathering, fishing, archaeological)
- Potential avoidance of land near project components due to perceived changes in environmental quality and the experience of being on the land
- Direct jobs and inclusive economic opportunities
- Changes to navigation and navigable waters
- Etc.



- Air emissions and sensory disturbance (noise, light, visual)
- Loss of terrestrial and aquatic habitat
- Impacts on local and regional economy
- Impacts to local services (community well-being and health services), infrastructure, and housing accessibility
- Etc.



- Inhibitions to species migration (fauna)
- Change in local species abundance and distribution
- Increase in racial/gender discrimination and/ or violence towards Indigenous Peoples (particularly towards Indigenous women, girls, and 2-Spirited Peoples)
- Changes to provincial and national Gross Domestic Product (GDP)
- Etc.

Potential topics to discuss with the Proponent

The Agency requires the Proponent to engage with your Nation regarding potential positive and adverse effects the Project may have on the following **five key themes**:

- your Nation's **health, social, and economic conditions**;
- your Nation's **physical and cultural heritage**;
- your Nation's **current use of lands and resources for traditional purposes**;
- **potential impacts of the project to the exercise of Aboriginal and treaty rights**; and
- **mitigation and enhancement measures**.

If there is any other information not listed below that would support the analysis of predicted effects on your Nation, please inform the Agency and the Proponent.

Health, Social, and Economic Conditions

When updating the Summary of Information on Potential Impacts of the Project, consider the following and be as specific as possible about locations without compromising confidentiality:

- your Nation's existing health, social and economic conditions (e.g., physical and mental health, and social well-being), potential changes on these conditions resulting from the Project, and the positive and negative consequences of these changes
- drinking and recreational water sources (permanent, seasonal, periodic, or temporary)
- country foods (animals and plants) that are consumed or used by your Nation, including what species are used, how much and how frequently they are consumed or used, and where they are harvested
- sites or areas that are used by your Nation, such as for camping, hunting, trapping, fishing, gathering, harvesting and enjoying the land, and the number of people that use each site or area identified;
- current use of lands and waterbodies for traditional economic practices that may be impacted by the Project including hunting, trapping, fishing, gathering or harvesting;
- existing infrastructure and services in your Nation (e.g. health services, childcare services, women's shelters, housing, addiction and mental health-related services, transportation and roads)
- inclusive hiring and retention strategies for members of your Nation who may become employed by the Proponent for the Project

Physical and Cultural Heritage

When updating the Summary of Information on Potential Impacts of the Project, consider the following and be as specific as possible about locations without compromising confidentiality:

- burial sites
- spiritual sites, including rivers and watercourses, cultural landscapes
- oral histories
- teaching areas used to transfer knowledge and oral histories between generations

How to Participate During the Federal Impact Assessment

Crawford Nickel Project

- cultural values and experiences of being on the land
- Indigenous governance systems and Indigenous laws tied to the landscape
- toponymy, language and other components that make up a culture
- sacred, ceremonial or culturally important places (e.g., the Mattagami River), plants (e.g., cedar, sage, spruce, sweetgrass), animals (e.g., bald eagles, moose, spirit moose), objects, beings, or things
- places with archaeological potential or artefacts (e.g., the shoreline of the Mattagami River and its tributaries)
- sites your Nation used or occupied historically

Current Use of Lands and Resources for Traditional Purposes

When updating the Summary of Information on Potential Impacts of the Project, consider the following and be as specific as possible about locations without compromising confidentiality:

- resources used by your Nation for traditional and cultural purposes, such as plants, fish, mammals, birds, other country foods, medicines, and their cultural connection to your Nation
- where you use lands and waterbodies for traditional purposes, including for camping, hunting, trapping, fishing, gathering, harvesting, navigation, boating, portaging, recreation, social and ceremonial or teaching purposes
- how frequently you practice the activities, and for how long
- access to areas used for lands and resources, including travel ways, navigable waterways and waterbodies
- overall quality of the experience of the practice (e.g., how will changes in air quality, noise levels, landscape, and the presence of others affect your enjoyment and experience of the land and traditional practices?)

Potential Impacts of the Project to the Exercise of Aboriginal and Treaty Rights

When updating the Summary of Information on Potential Impacts of the Project, consider the following and be as specific as possible about locations without compromising confidentiality:

- general description of your Nation's Aboriginal and/or Treaty rights exercised in the area near the Project and far from the Project, and information on how rights will be affected by the Project
- the quality and quantity of resources required to support your Nation's exercise of rights
- physical access to the resources required to exercise rights, including the timing, seasonality, distance from your Nation's
- the experience associated with the exercise of rights, including the ability of Indigenous communities to exercise their rights in a peaceful manner, and the connection to the landscape

How to Participate During the Federal Impact Assessment

Crawford Nickel Project

- specific areas of cultural importance where rights are exercised (e.g., around the Mattagami River, Jocko Creek, the North Driftwood River, the West Buskegau River, and the Abitibi River)
- landscape, social and cultural conditions that support your Nation's exercise of rights
- Indigenous governance systems and Indigenous laws associated with the exercise of rights
- information about members within your Nation, and their role in the exercise of rights (e.g., women, men, Elders, youth, people with disabilities)
- pre-existing impacts that are already interfering with the ability to exercise rights or to pass along Indigenous cultures and cultural practices
- views on potential adverse impacts that may result from the residual and cumulative effects identified by the Proponent

Mitigation and Enhancement Measures

As per Section 6 of the Guidelines, the Agency expects the Proponent to cooperate with Indigenous communities to identify preferred mitigation and enhancement measures to avoid, minimize, offset or otherwise accommodate for potential adverse impacts on Indigenous Peoples or their rights, as well as to optimize the Project's benefits for their communities. Specific types of information that you may consider sharing are described in Sections 9.3, 10.3, 11.3, and 12.5 of the Guidelines and can include, but are not limited to:

- suggestions for mitigation and enhancement measures to any potential effect on:
 - human health;
 - social valued components;
 - economic conditions;
- suggestions for measures to accommodate potential adverse impacts of the Project on your Nation's current use of lands and resources for traditional purposes, physical and cultural heritage, and ability to exercise rights; and
- views on potential adverse impacts on the exercise of rights that have not been fully mitigated or accommodated as part of the impact assessment.

How to Participate During the Federal Impact Assessment

Crawford Nickel Project

Please share your views by using the **Submit a Comment** feature on the Registry page
[Reference Number: 83857]

<https://iaac-aeic.gc.ca/050/evaluations/proj/83857>

Contact Information:

Neha Frantz, Crown Consultation Coordinator
Impact Assessment Agency of Canada

Tel: 416-209-4623

Email: Crawford@iaac-aeic.gc.ca

Attention: Crawford Nickel Project

Important Note

Any information submitted to the Agency to inform this project assessment will be made publicly available as part of the project file, and may be posted online via the Canadian Impact Assessment Registry (Reference #83857) subject to certain exceptions related to privacy, security or confidentiality. The Agency's Submission Policy (<https://iaac-aeic.gc.ca/050/evaluations/participation/conditions>) describes what submitted information can be shared publicly, and what should remain private. For further information on how we protect your privacy, please refer to the Privacy Notice (<https://www.iaac-aeic.gc.ca/050/evaluations/protection>).

Indigenous Knowledge shared in confidence is protected from disclosure under section 119 of the *Impact Assessment Act* (the IAA), except if written consent is provided, or if the information is publicly available. In addition, Indigenous Knowledge shared in confidence could be shared with certain parties if disclosure is necessary for procedural fairness and natural justice or for use in legal proceedings. This ensures that interested persons have a fair opportunity to participate in processes that would likely affect their interests, and that they have access to all necessary information and evidence relied on by the decision-maker.

Should you wish to provide any comments or documents that contain confidential or sensitive information that should be protected from release to the public, please contact Neha Frantz at 416-209-4623, or at Crawford@iaac-aeic.gc.ca **before** submitting the information. This will ensure that your submission is handled appropriately. Note, that the Agency will consult with you prior to disclosing Indigenous Knowledge shared in confidence under an exception.