

Crawford Nickel Project

PUBLIC INFORMATION SESSION, MAY 21, 2026



Impact Assessment
Agency of Canada

Agence d'évaluation
d'impact du Canada

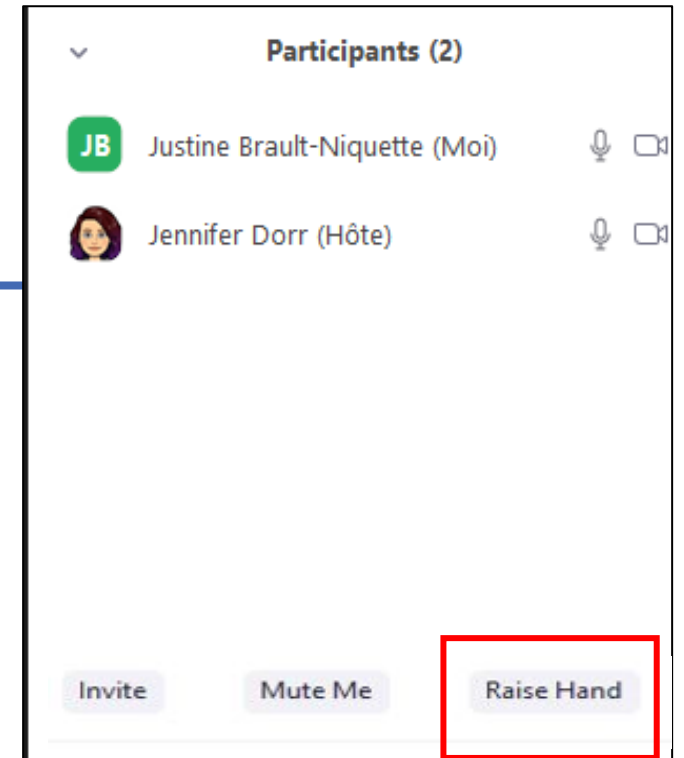
Canada

Session Outline

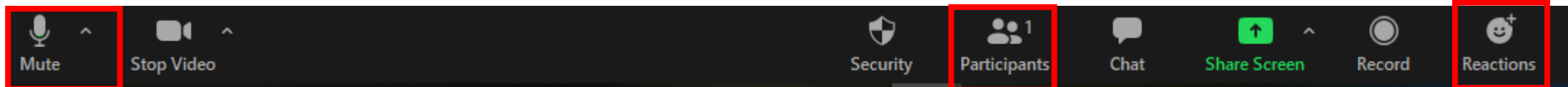
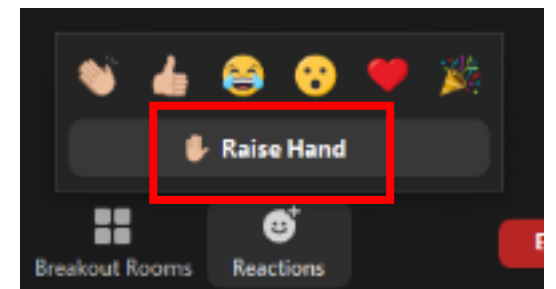
- The Impact Assessment Agency of Canada (IAAC) and the federal impact assessment process
- How to participate in the comment period for the draft Impact Assessment Report and draft potential conditions
- Overview of the Crawford Nickel Project
- Overview of the draft Impact Assessment Report conclusions, consideration of public interest factors, and permitting coordination
- Analysis of adverse federal effects
- Discussion and next steps

To Ask a Question

- Click the "raise hand" function or type the question into the chat.
- If you join the session by phone, press *9 to ask a question.
- Please mute your microphone if you are not speaking.



OR



Federal Impact Assessment

Impact Assessment Agency of Canada (IAAC)

Who are we?

- Federal agency reporting to the Minister of the Environment, Climate Change and Nature (the Minister).

Our responsibilities:

- Conduct federal impact assessments under the *Impact Assessment Act* (IAA) on major projects in Canada, including related Indigenous consultations and public engagement.



Assessments that work
**TIMELY. EFFICIENT.
FOR WHAT MATTERS.**

What is Impact Assessment?

- A federal impact assessment is a planning and decision-making tool that looks at:
 - the impacts that a proposed project could have to areas of federal responsibility
 - the impacts on Indigenous Peoples and their rights

Decision-Making under the IAA

Step 1

Determine whether there are likely significant adverse federal effects, and the extent to which those effects are significant, after taking into account measures to reduce them.

Step 2

Determine whether the likely significant adverse federal effects are justified in the public interest.

The Federal Impact Assessment Process



Assessment Timeline



Public Participation in the Impact Assessment Process

HOW TO GET INVOLVED

Your Participation in the Impact Assessment Process

- Your comments can guide and influence the impact assessment process and inform the proponent and federal decision makers.
- You can contribute by:
 - commenting on whether IAAC accurately reflected any concerns or information you provided throughout the impact assessment process
 - commenting on whether the proposed mitigation measures are appropriate
 - making suggestions for how to prevent or mitigate adverse federal effects

How to participate in the impact assessment process

You can submit comments:

- Via the **Canadian Impact Assessment Registry (the Registry)** website
- By contacting IAAC directly using the project's inbox: Crawford@iaac-aeic.gc.ca

The Registry is an information and participation tool to:

- Find information on the project
- Submit comments on the project
- Sign up for an automated project mailing list

You can submit your comments and documents directly to the Registry using the **“Submit a comment”** function on the Registry project page: <https://iaac-aeic.gc.ca/050/evaluations/proj/83857>

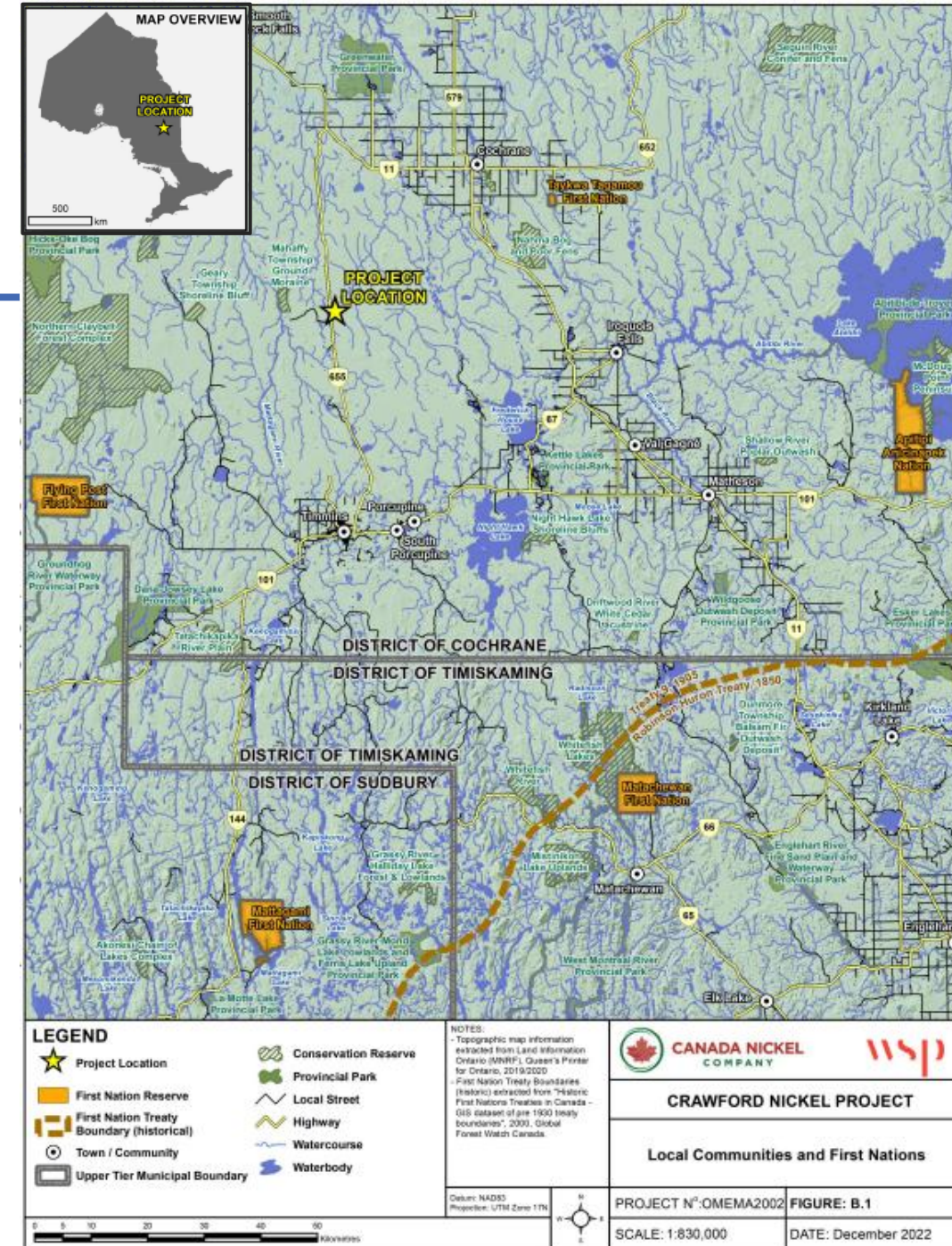
Confidentiality

- Public comments and documents received by IAAC are posted to the Registry as part of the Project file.
- IAAC protects information submitted based on IAAC's Submission Policy: <https://iaac-aeic.gc.ca/050/evaluations/participation/conditions>
- For further information on how we protect your privacy, please refer to IAAC's Privacy Notice: <https://iaac-aeic.gc.ca/050/evaluations/protection>
- If you do not want your comment posted on the Registry, please contact IAAC **prior** to submitting the comment.

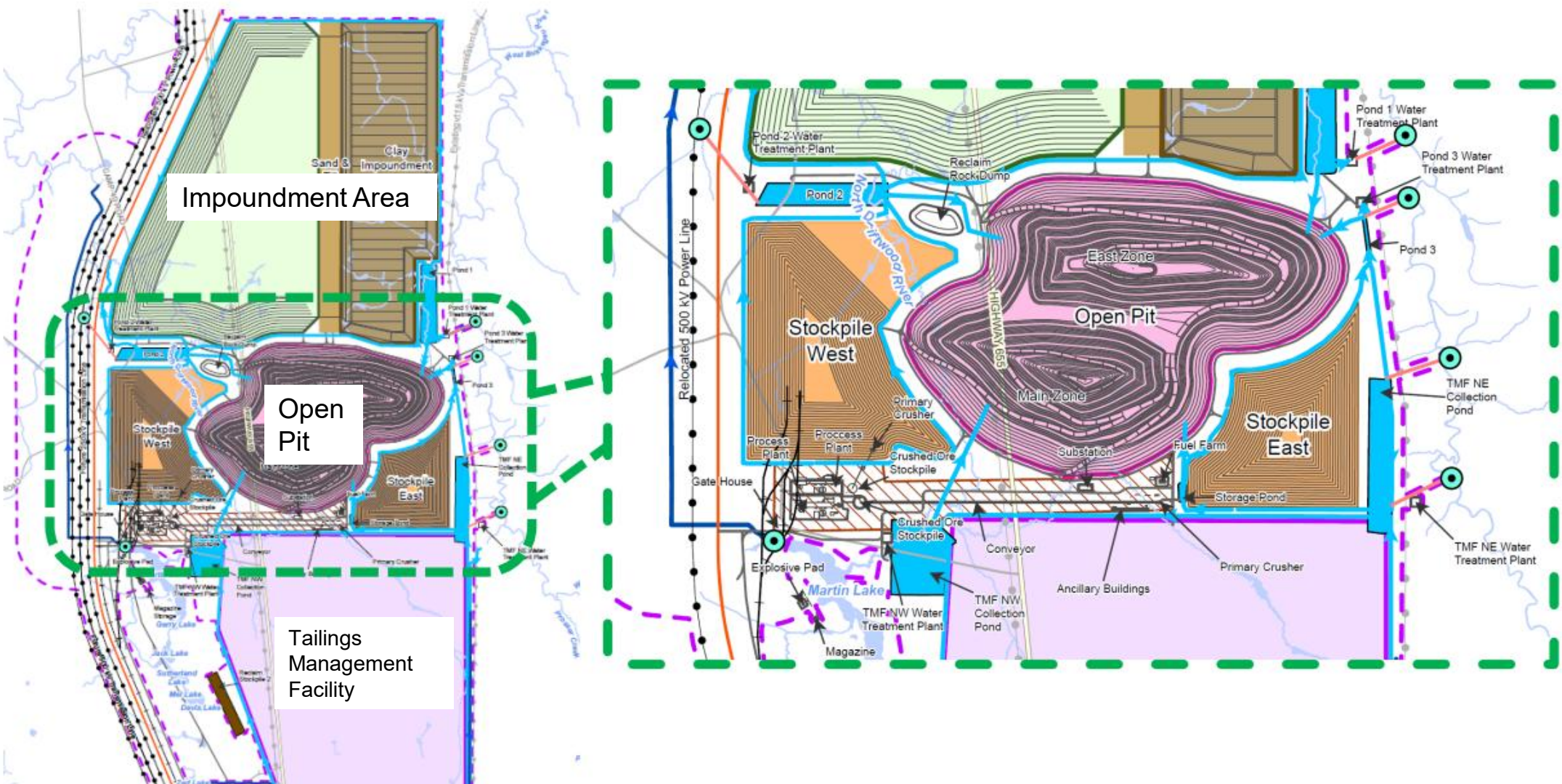
The Crawford Nickel Project

Project Description

- **Location:** 42 km north of Timmins, Ontario
- **Proponent:** Canada Nickel Company
- **Project:** Open-pit nickel mine with metal mill
 - Proposed to be largest base metal mine in Canada
 - Will operate for 41 years
 - Production capacity of 275,000 tpd, mill capacity of 120,000 tpd, with 8.5 Mt of nickel concentrate over life
 - Includes reroute of provincial Highway 655 and 500 kV transmission line, and rail spur
- **Context:**
 - Greenfield mine in a historic mining region
 - Close to existing mine services
 - Proposing net-negative carbon footprint through carbon storage
 - Proposing to contribute to domestic supply chain of critical minerals to support Critical Minerals Strategy



Project Site Plan



- Legend**
- Project Area
 - Base Features**
 - Existing Major Road
 - Existing Minor Road
 - Existing Transmission Line
 - Watercourse
 - Waterbody
 - Proposed Project Components**
 - Discharge Route
 - North Dirtwood Diversion Channel (Potential fish habitat enhancement Area)
 - Rail Spur
 - Relocated Hwy 655 ROW
 - Contact Water Channel
 - Site Road
 - Transmission Line
 - Discharge Location
 - Low Grade Ore Stockpile
 - Open Pit
 - Clay Impoundment
 - Pond
 - Tailings Management Facility
 - Rock Impoundment
 - Reclaim Stockpile
 - Sand & Till Impoundment
 - Process Plant Area

Draft IA Report Conclusions

Adverse federal effects	Extent of significance	
	Residual effects	Cumulative effects
Fish and Fish Habitat	Significant to a moderate extent	Significant to a low extent
Migratory Birds	Significant to a moderate extent	Significant to a low extent
Direct or Incidental Adverse Effects (wetlands)	Significant to a low extent	Significant to a low extent
Indigenous Peoples' Current Use of Lands and Resources for Traditional Purposes	Significant to a low extent	Significant to a moderate extent
Indigenous Peoples' Physical and Cultural Heritage and Structures, Sites or Things of Historical, Archaeological, Paleontological or Architectural Significance	Significant to a low extent	Significant to a low to moderate extent
Indigenous Peoples' Health, Social and Economic Conditions	Significant to a low extent	Significant to a low to moderate extent
Section 63 decision-making factors	Severity Conclusions / Extent to which the Project Contributes	
Positive impacts to Indigenous Peoples	Increase in employment, training, and business opportunities for Indigenous communities. Confirmed agreements with Flying Post First Nation, Matachewan First Nation, Mattagami First Nation, and Taykwa Tagamou Nation. Future agreements are anticipated through IBAs.	
Adverse Impacts to Indigenous Rights	<ul style="list-style-type: none"> • For Apitipi Anicinapek Nation, Flying Post First Nation, Matachewan First Nation, Mattagami First Nation, Métis Nation of Ontario (Region 3), Taykwa Tagamou Nation: Severity of potential impacts range from negligible/low to moderate for the right to fish, hunt and trap, gather plants, cultural continuity, and governance depending on the right and community. • Potential impacts to rights are not anticipated for other engaged Indigenous communities. 	
Environmental Obligations	Not likely to contribute	
Climate Change Commitments	Uncertain and not yet demonstrated	
Sustainability	Likely to contribute to a low to moderate extent	

Permitting Coordination

- IAAC is working with regulators to identify likely required permits to develop a Detailed Permitting Plan
- IAAC continues to work with regulators to advance permitting coordination.
- The project is expected to require the following federal permits for specific activities:
 - *Fisheries Act* authorizations;
 - Schedule 2 amendments under the *Metal and Diamond Mining Effluent Regulations*
 - *Canadian Navigable Waters Act* work approvals; and
 - a potential *Species at Risk Act* permit.
- The project has been nominated as a nation-building project under the *Building Canada Act* and has been designated for Ontario's One Project, One Process framework (1P1P)

Coordination of Mitigation Measures and Follow-up Programs across Jurisdictions

Context:

- Government of Ontario regulates certain aspects of the project through class environmental assessments and various permits and approvals

Process steps:

- IAAC worked with relevant federal authorities and provincial ministries to review IAAC's assessment and recommended mitigation and follow-up monitoring measures.
- IAAC is collaborating with federal departments and provincial ministries, including to confirm how key mitigation measures would be implemented within their respective regulatory frameworks.
- Based on the information received so far from other jurisdictions, IAAC identified which key mitigation measures would potentially be ensured by another jurisdiction and which would potentially be included as conditions under the IAA.

Biophysical Adverse Federal Effects

Fish and Fish Habitat

Legend:

- Measures within red box are recommended as potential conditions for IA Decision Statement
- Other measures expected to be ensured by other jurisdictions

Potential Adverse Effects

- Loss or alteration of fish habitat from overprinting and alteration of stream flows in the North Driftwood River, Buskegau River, and Jocko Creek watersheds
- Adverse effects on fish health and mortality from effluent (mine waste), sedimentation and potential failure of the diversion channel, large dewatering events, and loss of the benthic invertebrate community
- There is uncertainty in the extent of habitat loss, technical feasibility of the diversion channel, and extent of water quality changes

Key Mitigation and Follow-up

- Fish salvage and relocation
- Seepage management plan to ensure no acute or chronic toxicity to fish at the seepage face
- Follow-up program for efficacy of fish habitat in the diversion channel
- Fish habitat offsetting plan and measures for the design of the diversion channel
- Intercept, collect, and treat contact water prior to discharge
- Manage potential acid-generating and metal-leaching materials
- Design, install, and maintain bridges and culverts
- Manage groundwater takings

Key Regulatory Frameworks*

- Federal
 - *Fisheries Act*
 - *Metal and Diamond Mining Effluent Regulations*
- Government of Ontario
 - *Environmental Protection Act*
 - *Fish and Wildlife Conservation Act*
 - *Lakes and Rivers Improvement Act*
 - *Mining Act*
 - *Ontario Water Resources Act*

IAAC is of the view that the residual effects of the project to fish and fish habitat are likely to be significant to a moderate extent. Cumulative effects are likely to be significant to a low extent.

Migratory Birds

Legend:

- Measures within red box are recommended as potential conditions for IA Decision Statement
- Other measures expected to be ensured by other jurisdictions

Potential Adverse Effects

- Displacement over a large area due to vegetation clearing, sensory disturbances, and loss or alteration of habitat from changes in groundwater and surface water interactions.
- Increased mortality risk from construction activities, attraction of nocturnal species from artificial lighting, collisions with traffic or the transmission line, and exposure to untreated contact water

Key Mitigation and Follow-up

- Determine the presence of migratory bird nests prior to initiating project activities
- Establish setback distances around nest(s) and residence(s)
- Control project lighting
- Ensure migratory birds do not access sources of contact water, and implement follow-up for waterfowl
- Progressively rehabilitate the project
- Measures to limit changes to air quality, noise, and water quality

Key Regulatory Frameworks*

- Federal
 - *Migratory Birds Convention Act, 1994* and its regulations
 - *Species at Risk Act*
- Government of Ontario
 - *Environmental Protection Act*
 - *Mining Act*
 - *Ontario Water Resources Act*

IAAC is of the view that the residual effects of the project to migratory birds are likely to be significant to a moderate extent. Cumulative effects are likely to be significant to a low extent.

Also see slide on malfunctions and accidents

Direct or incidental adverse effects

Legend:

- Measures within red box are recommended as potential conditions for IA Decision Statement

Potential Adverse Effects

- IAAC considered potential direct or incidental adverse effects that are directly linked or necessarily incidental to federal permitting decisions (see permitting coordination slide)
- Federal permissions under the *Fisheries Act* and *Metal and Diamond Mining Effluent Regulations* that enable changes to fish-bearing waterbodies are likely to result in residual effects to adjacent wetlands
- No other key effects beyond wetlands were identified

Key Mitigation and Follow-up

- Progressively rehabilitate the project, including wetlands where possible (listed under Current Use of Lands and Resources)

Key Regulatory Frameworks*

- Government of Ontario
 - *Mining Act*

IAAC is of the view that the residual direct or incidental effects and cumulative effects of the project are likely to be significant to a low extent.

Impacts on Indigenous Peoples

Physical and Cultural Heritage

(including sites, or things of historical, archaeological, paleontological, or architectural significance to Indigenous Peoples)

Legend:

- Measures within red box are recommended as potential conditions for IA Decision Statement

Potential Adverse Effects

- Loss or alteration of culturally significant sites (ceremonial sites; storied places; cultural landscapes) and changes to access to those sites due to project activities.

Key Mitigation and Follow-up

- Archaeological and Cultural Resources Management Plan and Chance Find Protocol:
 - Delineate an area around any discovery as a no-work zone.
 - Develop and deliver mandatory training on chance finds, which includes the identification of sensitive locations in the project footprint, to avoid impacts to archaeological resources
 - Notify Indigenous communities and IAAC upon discovery of archaeological finds.

Key Regulatory Frameworks*

- Government of Ontario
 - *Ontario Heritage Act*

IAAC is of the view that the residual effects of the project to physical and cultural heritage are significant to a low extent. Cumulative effects are significant to a low to moderate extent.

Current Use of Lands and Resources for Traditional Purposes

Legend:

- Measures within red box are recommended as potential conditions for IA Decision Statement

Potential Adverse Effects

- Loss or change in the quality, amount, and distribution of resources, due to:
 - habitat loss or degradation; and
 - sensory disturbances.
- Impact to experience on the land from sensory disturbance, changes to preferred locations, and/or presence of new users in preferred areas.
- Change to access to sites for hunting, trapping, fishing and plant harvesting.
- Changes to sharing Indigenous Knowledge

Key Mitigation and Follow-up

- Communication plan for activities that may impact current use of lands and resources
- Plan for safe access to exercise rights when possible
- Inform Indigenous communities of clearing activities to allow for pre-clearing harvesting
- Progressively rehabilitate the project in consultation with Indigenous communities
- Prohibit project employees from fishing, hunting, trapping, and plant gathering
- Follow-up programs for impacts to plant gathering and hydrological changes
- Community-specific intergenerational knowledge transfer activity for land use and heritage
- Measures to prevent invasive species
- *See slides on Fish and Fish Habitat and Migratory Birds*

Key Regulatory Frameworks*

- *See slides on Fish and Fish Habitat, and Migratory Birds.*

IAAC is of the view that the residual effects of the project to current use are likely to be significant to a low extent. Cumulative effects are significant to a moderate extent.

Health, Social and Economic Conditions

Legend:

- Measures within red box are recommended as potential conditions for IA Decision Statement

Potential Adverse Effects

- Change in health risk from reduced air quality, reduced water quality, elevated noise levels, and perceived change in quality of country foods.
- Increased pressure on urban services and infrastructure used by Indigenous Peoples due to influx of non-local workers, contributing to impacts on community well-being

Key Mitigation and Follow-Up

- Policies and training for project workers to reduce harassment, violence, racism, and substance use.
- Establish pre-employment training and procurement policies to increase employment and business opportunities for Indigenous Peoples
- Community feedback protocol to respond to concerns
- Ensure safe access to the project site by providing personal protective equipment
- Accommodations plan to support the project workforce and minimize effects on housing in nearby communities
- Follow-up programs for air quality, fish tissue, water quality, effectiveness of training and procurement policies
- Retain Indigenous monitors for follow-up programs
- *See slides on Fish and Fish Habitat, Current Use, and Physical and Cultural Heritage*

Key Regulatory Frameworks*

- *See slides on Fish and Fish Habitat, Migratory Birds, and Current Use*

IAAC is of the view that the residual effects of the project on the health, and economic conditions of Indigenous Peoples are likely to be significant to a low extent. Cumulative effects are significant to a low to moderate extent.

Positive Impacts on Indigenous Peoples

Potential Positive Impacts

- Employment and business opportunities (e.g., contracting and procurement of project components and activities)
- Training, education, apprenticeships, and scholarships that could improve opportunities beyond the project

Malfunctions and Accidents

Unlikely Scenarios

Malfunctions and Accidents – Unlikely Scenarios

Legend:

- Measures within red box are recommended as potential conditions for IA Decision Statement

Potential Adverse Effects

- The following unlikely scenarios may impact fish and fish habitat, migratory birds, as well as traditional practices and community well-being of Indigenous communities:
 - Tailings management facility dam failure leading to release of tailings
 - Water management facility failure leading to release of untreated contact water
 - Stockpile slope failure
 - Release of hazardous materials from spills, traffic collisions, or train derailment
 - Accidental fires

Key Mitigation and Follow-up

- Design project infrastructure (e.g., dam, water management facilities) to meet applicable codes and standards that address permafrost, wildfires, slope stability, and extreme weather events
- Provide employee training for prevention and response
- Measures to prevent and contain hazardous materials
- Develop and implement an Emergency Response Plan and Communication Plan for malfunction and accident scenarios
- Design water management facilities for to meet stormwater needs

Public Interest Factors

Consideration of Public Interest Factors in Decision Making

s.63(a) Impacts of the Likely Effects of the Designated Project on any Indigenous Group and the Adverse Impacts that those Effects May Have on the Rights of Indigenous Peoples:

- The project is likely to have positive economic impacts for Indigenous Peoples, in addition to the adverse federal effects on Indigenous Peoples described above.
- The project is likely to cause adverse impacts to the exercise of Indigenous Peoples' rights as recognized and affirmed by section 35 of the Constitution Act, 1982. Specifically, IAAC considered the right to hunt and trap, fish, harvest plants, cultural continuity, and governance.

Consideration of Public Interest Factors in Decision Making

s.63(b) Extent to Which the Likely Effects of the Designated Project Contribute to the Government of Canada's Ability to Meet Its Environmental Obligations and Its Commitments in Respect of Climate Change:

- The likely effects of the project do not contribute to meeting Canada's environmental obligations, specifically as it relates to biodiversity, as adverse effects of the project on fish, birds, wildlife, wetlands and species at risk are predicted to remain after mitigation.
- Any potential positive contribution of the likely effects of the project to Canada's climate change commitments is uncertain and not yet demonstrated. The project is likely able to achieve net zero greenhouse gas emissions by 2050, but it will not contribute to short-term emission targets for 2030, and it is uncertain whether project effects will enable downstream domestic emissions reductions.

s.63(c) Extent to Which the Likely Effects of the Designated Project Contribute to Sustainability:

- The likely effects of the project would result in net positive contributions to sustainability to a low to moderate extent.
- The project effects are likely to strengthen Canada's role in critical mineral production and support long-term economic resilience for current and future generations.
- However, the project would also result in adverse effects on traditional Indigenous practices and knowledge transfer, and could place strain on the social well-being of Indigenous Peoples. The project's economic benefits for Indigenous communities and the region are expected to help reduce adverse effects on Indigenous Peoples.

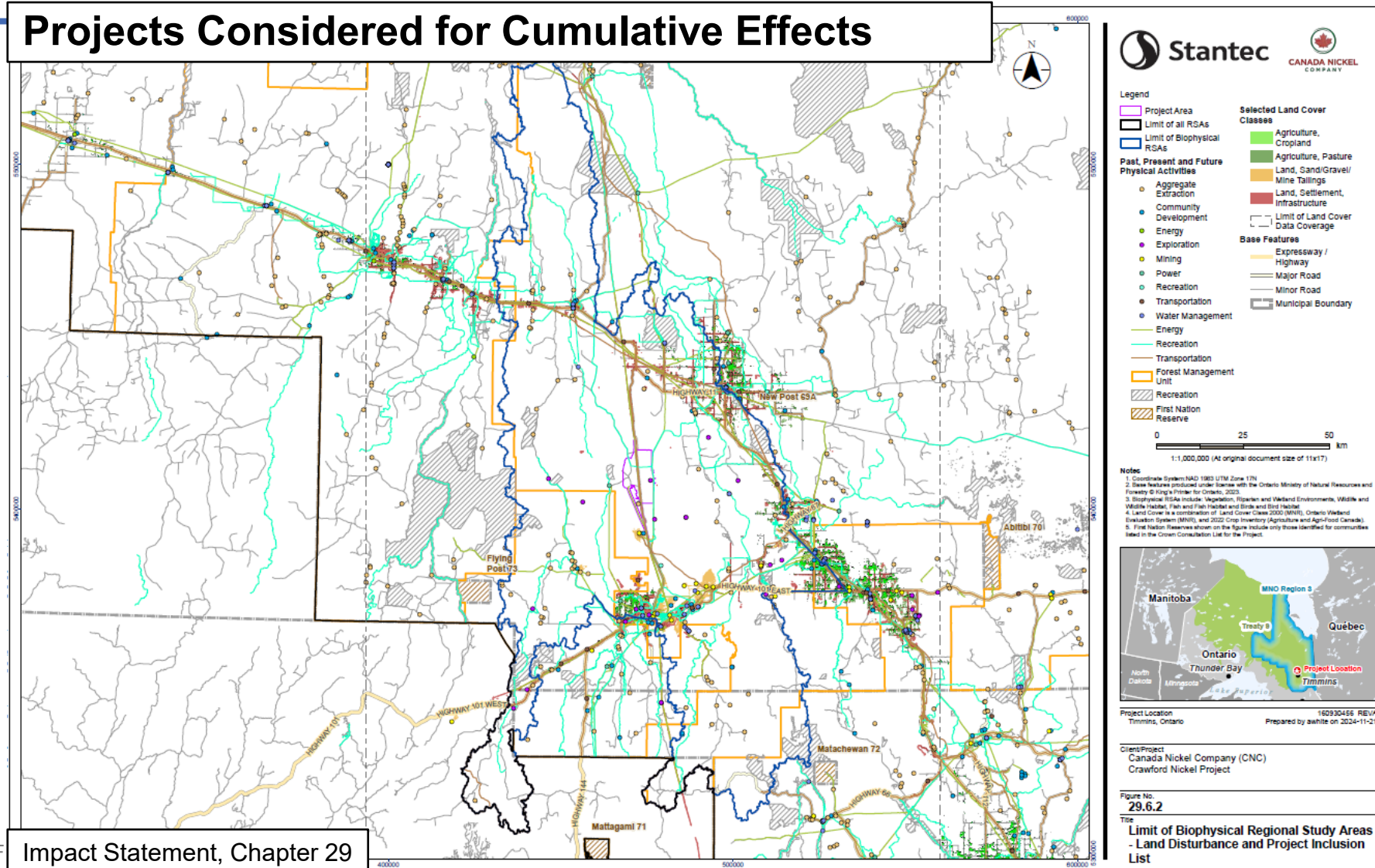
Cumulative Effects

Physical Activities considered in the cumulative effects assessment

- Mining and mineral exploration activities (e.g., North Timmins Gold Project)
- Forest management activities (e.g., forestry harvesting in the Abitibi River Forest Management Unit)
- Transmission infrastructure (e.g., 230-kV transmission line parallel to the project)

IAAC also considered the broader history of resource development within the Timmins area identified by Indigenous Peoples

Projects Considered for Cumulative Effects



Next Steps

Next Steps

The next steps of the federal impact assessment process include:

- IAAC invites comments on the draft Impact Assessment Report from Indigenous communities, the public, municipalities, provincial ministries, and federal departments during the comment period.
- The comment period is being held from **May 11 to June 10, 2026**.
- IAAC will use the comments received to finalize the Impact Assessment Report.
- The Impact Assessment Report will be shared with the Minister to inform the decision on whether the project's adverse federal effects are justified in the public interest. The Impact Assessment decision is anticipated to be posted to the Registry this summer.



Questions?

Larissa Goshulak, Senior Consultation Analyst

Phone: 437-518-5692

Email: Crawford@iaac-aeic.gc.ca

Media Relations: Media@iaac-aeic.gc.ca

Social Media: @IAAC-AEIC #CrawfordNickel

Crawford Nickel Project

Registry page: <https://iaac-aeic.gc.ca/050/evaluations/proj/83857>

Comment period notice: <https://iaac-aeic.gc.ca/050/evaluations/document/166438>