

Rouge National Urban Park Study

DEVELOPMENT OF SCOPE AND APPROACH



Impact Assessment
Agency of Canada

Agence d'évaluation
d'impact du Canada

Canada

Session overview

What	Who	When
Presentation	<ul style="list-style-type: none">• Impact Assessment Agency of Canada (<i>lead</i>)<ul style="list-style-type: none">• Parks Canada (<i>support</i>)• Environment and Climate Change Canada (<i>support</i>)	7:10-7:50pm
Questions and answers	All	7:50-8:30pm
Optional: virtual breakout rooms	All	8:30-9pm



Purpose

- To inform the public about the planning process to establish the scope and approach for the Rouge National Urban Park Study and future opportunities for public participation.
- To provide an early and meaningful opportunity for the public to participate in the process for the Rouge National Urban Park Study that establishes a positive relationship moving forward.
- To solicit comments on the scope and approach for the Rouge National Urban Park Study that will inform the draft Terms of Reference.



Who we are

IMPACT ASSESSMENT AGENCY, PARKS CANADA, ENVIRONMENT AND CLIMATE CHANGE



Impact Assessment Agency of Canada

- The Impact Assessment Agency of Canada was established on August 28, 2019 under the *Impact Assessment Act*.
- Contributes to informed decision making on major projects in support of sustainable development in Canada.
- Reports to Parliament through the Minister of Environment and Climate Change.





Parks Canada Agency

Protects and presents nationally significant examples of Canada's natural and cultural heritage, and fosters public understanding, appreciation and enjoyment in ways that ensure the ecological and commemorative integrity of these places for present and future generations

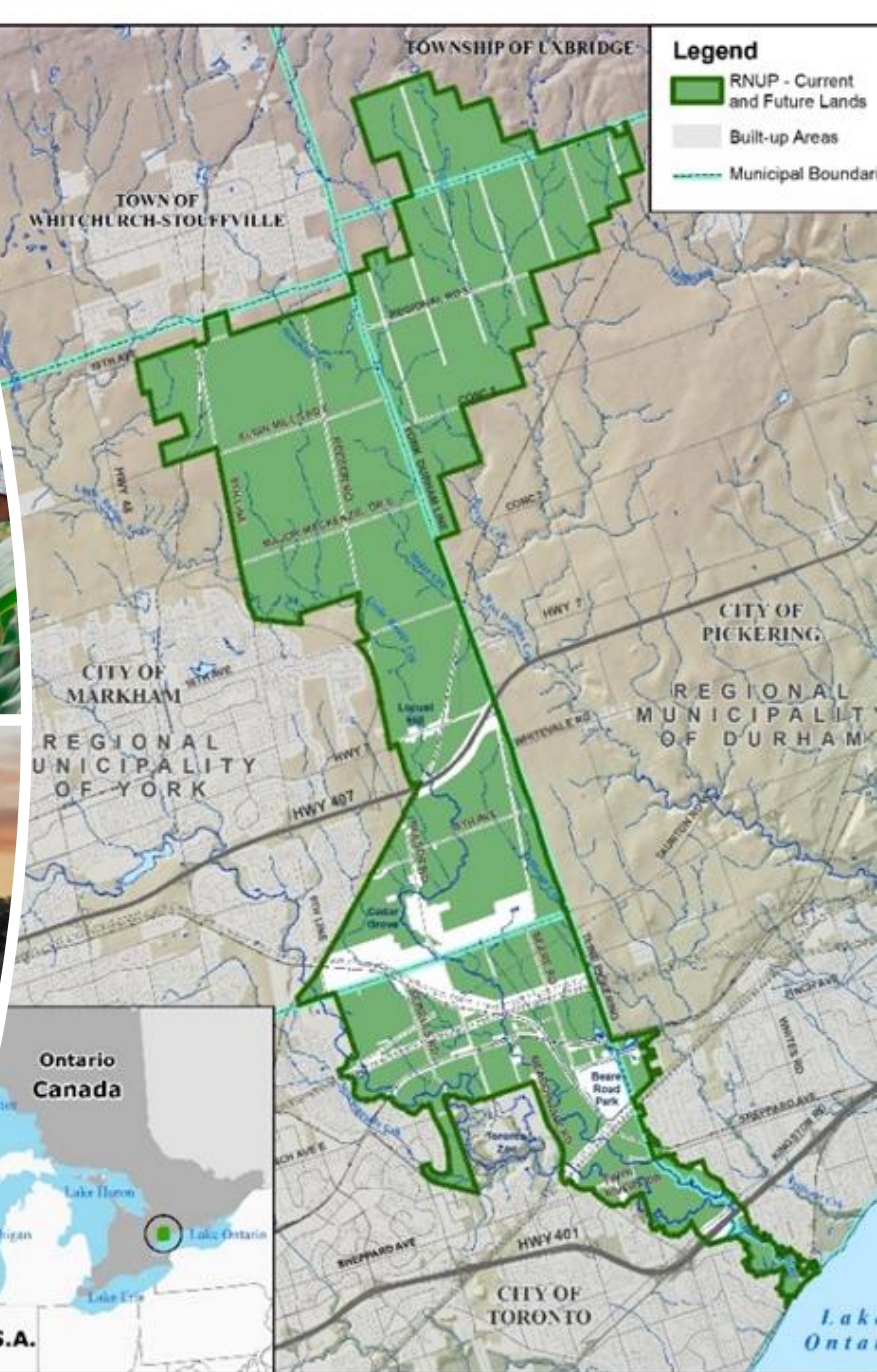




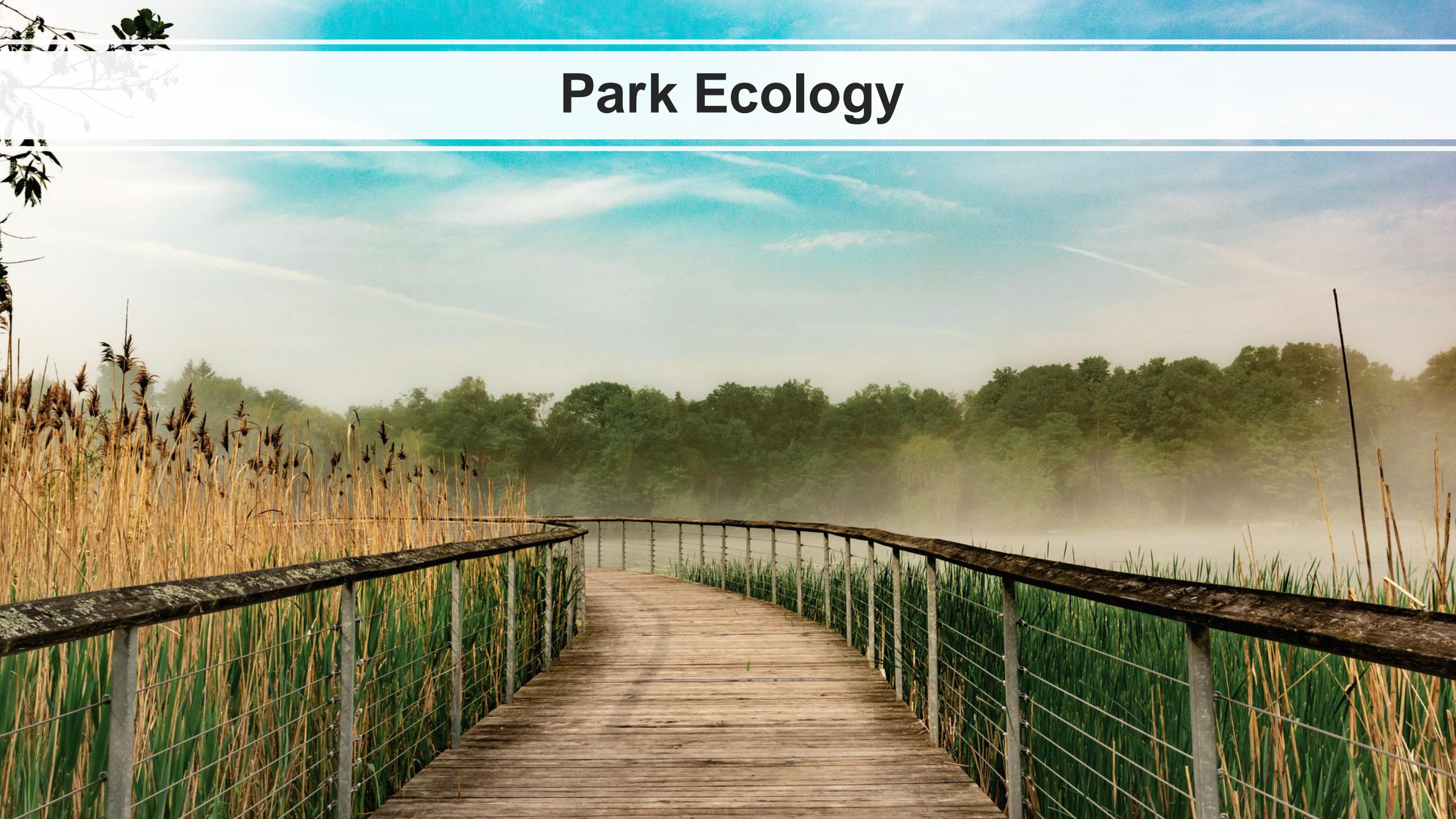
Rouge National Urban Park

Context

- 79.1 square kilometers
- Largest urban park in North America
- Connects Oak Ridges Moraine to Lake Ontario
- Important natural and cultural heritage
- Supports a vibrant farming community



Park Ecology





Species at Risk

Vibrant Farming Community



Environment and Climate Change Canada (ECCC)

- Informs Canadians about protecting and conserving our natural heritage, and ensuring a clean, safe and sustainable environment for present and future generations.
- The department works closely with the Impact Assessment Agency of Canada and Parks Canada – its ministerial portfolio partners – to achieve many common goals.
- Possesses specialist and expert information that may be relevant to the Study including in relation to:
 - Air Quality
 - Greenhouse gas emissions and climate change
 - Water quality and quantity
 - Wildlife, species at risk, and habitat
 - Climate and Meteorology



The Study

BACKGROUND AND NEXT STEPS



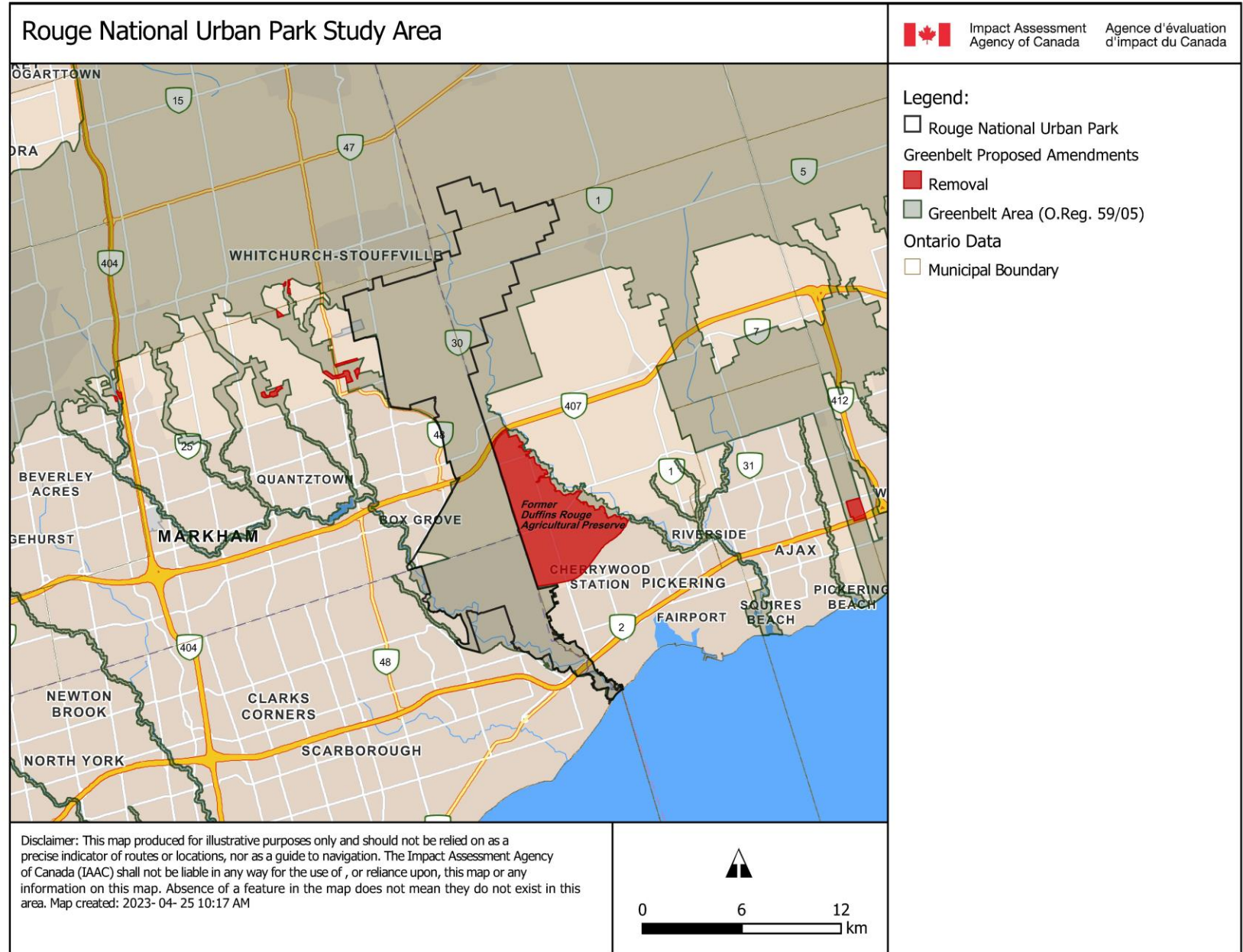
Study objectives

- To understand the potential effects, including cumulative effects, of past, ongoing, and potential future development of adjacent areas on Rouge National Urban Park
 - Specific focus will be on potential development activities in the area known as the Duffins Rouge Agricultural Preserve, which lost its provincial protection status in December 2022

The Duffins Rouge Agriculture Preserve represents 4,700 acres of primarily class 1 farmland and rare Carolinian habitat, and is directly adjacent and complementary to the Rouge National Urban Park



Study area



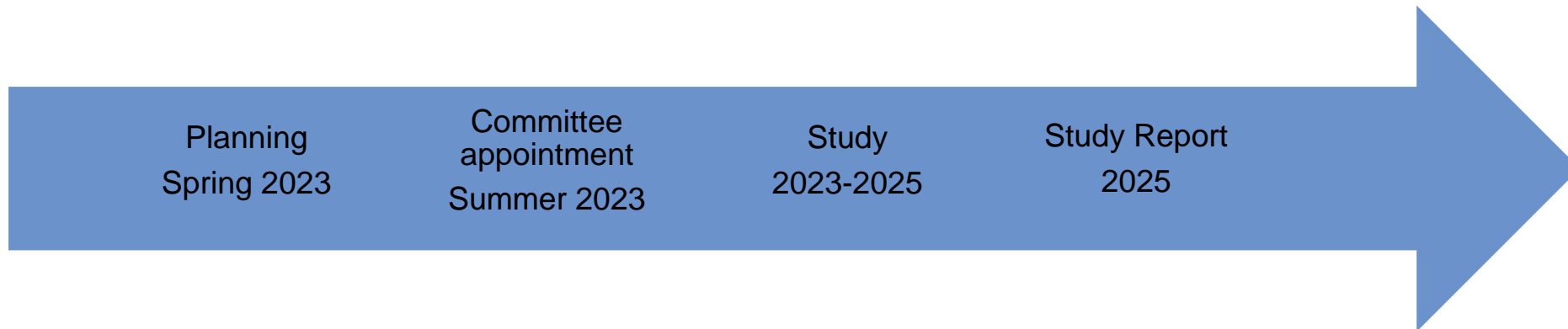
Potential scope

- The integrity of the Park and the ability of the Park to meet its management objectives, including:
 - the protection of biodiversity, natural resources, and natural process;
 - enhancement of ecological connectivity throughout the Park;
 - maintaining beneficial working relationships with Indigenous communities;
 - supporting a vibrant park farming community;
- Any other potential effects, including cumulative effects, on areas within federal jurisdiction, including species at risk, that may have implications within the park; and
- Consideration of how provincial laws and regulations would apply to potential development projects in the Duffins Rouge Agricultural Preserve in order to predict potential effects.



Potential approach

- Independent Committee appointed by the Minister of Environment and Climate Change would carry out the Study and provide a report.
- The Committee would provide opportunities for public and Indigenous participation, and ensure all relevant information is made available publicly.



Potential outcomes

- Conclusions on the potential effects, including cumulative effects, of development activities on the integrity of the Park and the ability of the Park to meet its management objectives, as well as any other identified effects within federal jurisdiction.
- Recommendations to avoid, mitigate or compensate potential impacts of development activities given the existing regulatory framework.



Status

- The Impact Assessment Agency is working with Parks Canada, Environment and Climate Change Canada and Indigenous groups to develop the proposed approach and scope for how the Study will be undertaken.
- Opportunities for public participation and engagement will be provided, and will inform the Study.
- Funding was made available to participate in discussions and provide input into documents, including the draft Terms of Reference.
- All information will be made publicly available on the Canadian Impact Assessment Registry: www.canada.ca/ciar.



Public participation

HOW YOU CAN PARTICIPATE



Why should you participate?

Contributions from the public help to:

- identify issues that are important to you early in the process;
- inform the environmental, health, social and economic impacts to be assessed;
- identify preferred engagement activities throughout the process;
- inform the analysis, including by providing community knowledge;
- inform the development of the Study, including scope and approach; and
- inform the carrying out of the Study.

For more information on principles of public participation, visit:

www.canada.ca/en/impact-assessment-agency/services/policy-guidance/public-participation-impact-assessment-fact-sheet.html



How do you participate in person?

Future in-person events may be held within affected communities. These can occur during:

- Planning for the Study; and
- Carrying out of the Study.

In-person engagement can take many forms.

These events may be opportunities to provide information or seek input on specific documents.

You can comment on how you would like to be engaged going forward.

How do you participate online?

Easily find and access information on the **Canadian Impact Assessment Registry**

- Includes documents posted for input from Canadians.
- Allows comments and documents to be uploaded directly to the Registry. Comments and documents can also be sent to the Agency via email.

To access the Registry, visit: www.canada.ca/ciar



Is there funding available to support my participation?

- Agency funding programs support meaningful public participation and Indigenous consultation
- Eligible recipients are individuals, Indigenous communities and organizations, and not-for-profit organizations
- Eligible costs could include: travel, childcare, professional services, report preparation, research, and information analysis

- **Indigenous Funding:** to assist with participation and consultations activities, including potential impacts on Aboriginal rights and title.
- **Regular Funding:** to assist in preparation for participation and engagement activities.

For more information on the Participant Funding Program, visit:

www.canada.ca/IAAC-funding



How do I get information about public participation opportunities?

- The Agency offers news and updates. To subscribe, go to: <https://iaac-aeic.gc.ca/002/admission-eng.aspx>
- Twitter: https://twitter.com/iaac_aeic
- You can sign up for the distribution list for the Study to receive information by email by sending an email with your name and email address to parkstudy-etudeparc@iaac-aeic.gc.ca





Contact us

General Information:

Rouge National Urban Park Study
Impact Assessment Agency of Canada
160 Elgin, 22nd Floor, Ottawa, ON, K1A 0H3
613-293-5216 / parkstudy-etudeparc@iaac-aeic.gc.ca

Media Relations:

[343-549-3870](tel:343-549-3870) / media@iaac-aeic.gc.ca

Participant Funding Program:

FP-PAF@iaac-aeic.gc.ca



Polls

Questions and answers

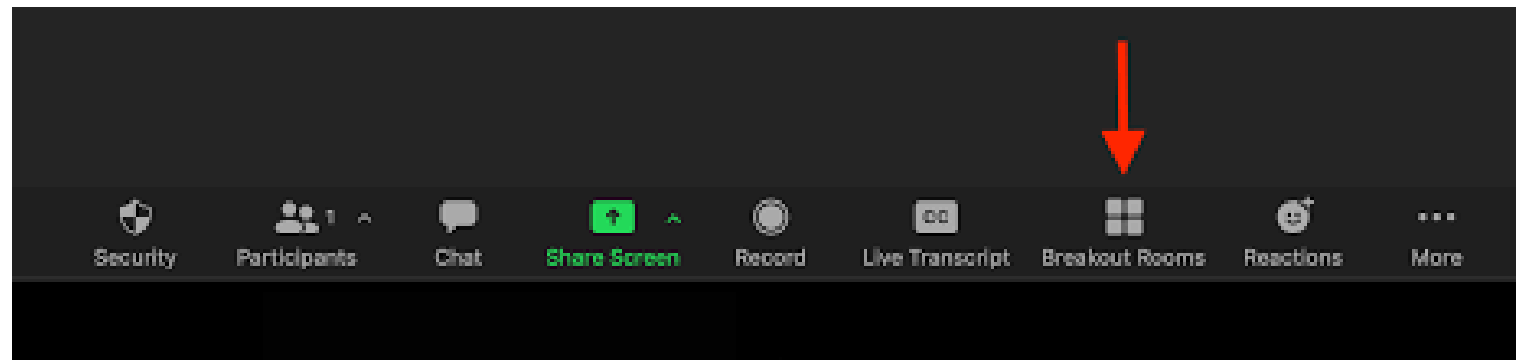


Virtual breakout rooms (optional)



Topics for input and closing

- **Park management objectives:** select those that are important to you
- **Valued components:** select those that are important to you
- **Park map:** identify locations that are important to you
- **Community knowledge:** share sources of information that may be relevant to the Study



Thank you for your participation!

