

Rouge National Urban Park Study

COMMENT PERIOD ON THE DRAFT TERMS OF REFERENCE



Impact Assessment
Agency of Canada

Agence d'évaluation
d'impact du Canada

Canada

Session Overview

What	Who	When
Welcome	<ul style="list-style-type: none">• Impact Assessment Agency of Canada	12:00 - 12:10 pm
Presentation	<ul style="list-style-type: none">• Impact Assessment Agency of Canada	12:10 - 12:30 pm
Questions and answers	<ul style="list-style-type: none">• Public• Impact Assessment Agency of Canada• Parks Canada• Environment and Climate Change Canada	12:30 - 12:50 pm
Closing	<ul style="list-style-type: none">• Impact Assessment Agency of Canada	12:50 - 13:00 pm



Purpose

- Present key sections of the publicly available draft Terms of Reference for the Rouge National Urban Park Study
- Present information on how to provide comments on the draft Terms of Reference
- Provide an opportunity for public engagement



Rouge National Urban Park Study

BACKGROUND AND NEXT STEPS



Study announcement

- On March 21, 2023, the Minister of Environment and Climate Change asked the Impact Assessment Agency of Canada to work with Parks Canada and Environment and Climate Change Canada to develop the proposed approach and scope for how the Study will be undertaken.

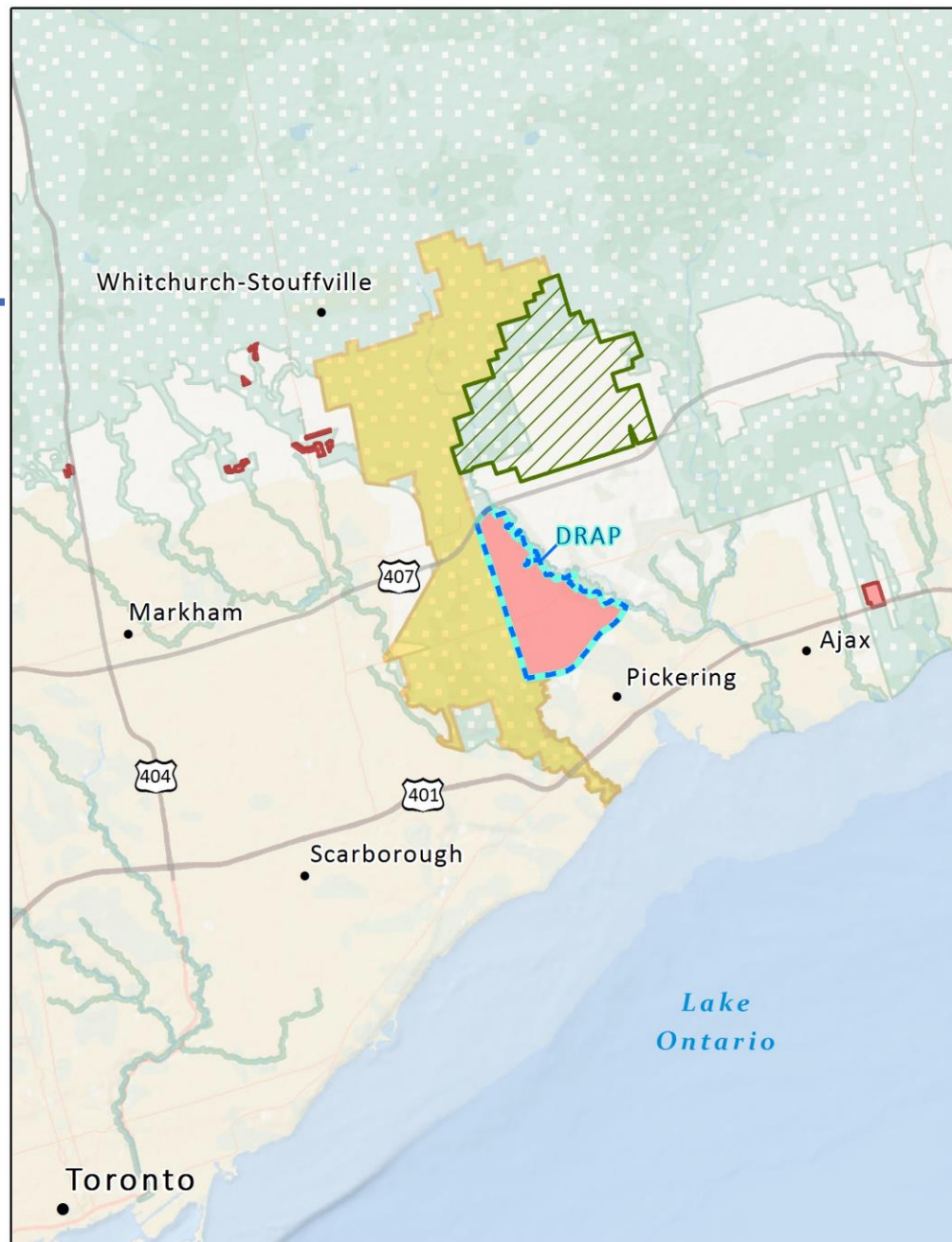


Study Objectives

- To understand the potential effects, including cumulative effects, of past, ongoing, and potential future development of adjacent areas on the Rouge National Urban Park
 - Specific focus on future development in the Duffins Rouge Agricultural Preserve



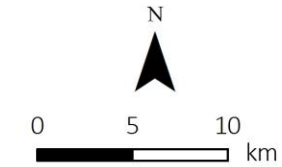
Study Area



Rouge National Urban Park Study Area

Legend

- Duffins Rouge Agricultural Preserve (DRAP)
- Other Federal Lands
- Greenbelt Boundary
- Greenbelt Amendments – 2022
- Rouge National Urban Park



Overview Map



Created by IAAC's Geomatics Services for illustrative purposes only. May 2023.

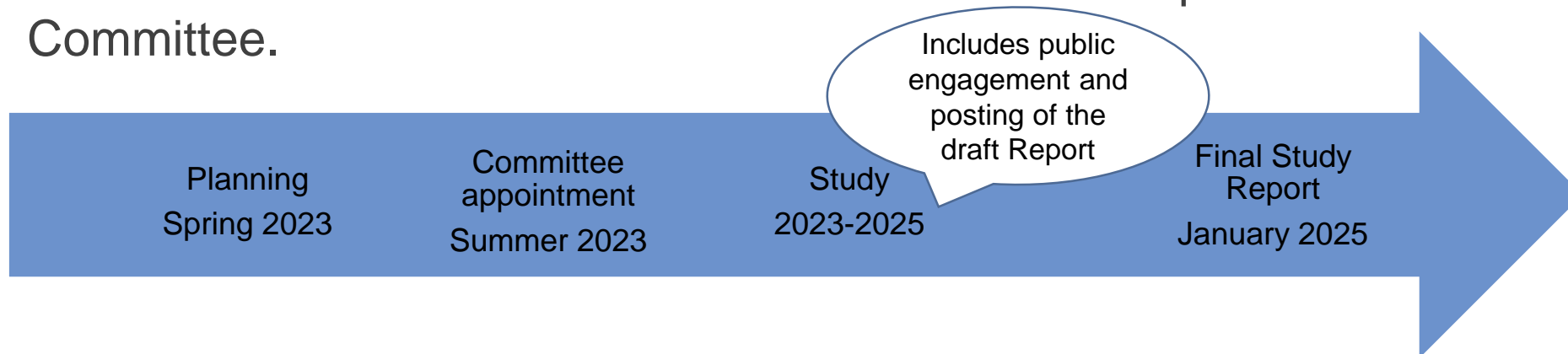
Study Status

- Comment period on draft Terms of Reference: **May 30 to June 20, 2023.**
- Funding was made available to support participation.
- Comments received will inform the final Terms of Reference.
- All information will be made publicly available on the Canadian Impact Assessment Registry: www.canada.ca/ciar (reference number: 84459).



Study Approach

- A three-person, independent expert Committee appointed by the Minister of Environment and Climate Change will carry out the Study and provide a report.
- The Committee will provide opportunities for public and Indigenous participation, and ensure all relevant information is made available publicly.
- The Terms of Reference outline the mandate and requirements of the Committee.



Study Scope

- Future potential development activities in the Duffins Rouge Agricultural Preserve and their potential effects
- Cumulative effects
- Ecological integrity of the Park and ability of the Park to meet its management objectives
- Any other potential effects on areas of federal jurisdiction (e.g., species at risk, federal lands)
- Consideration of how various laws and regulations would apply to developments



Draft Terms of Reference

BACKGROUND AND NEXT STEPS



Content of the Document

1. Study Objectives and Scope
2. Establishment, Purpose and Composition of the Committee
3. Committee Secretariat
4. Indigenous Knowledge, Aboriginal and Treaty Rights and Potential Impacts to Indigenous communities
5. Committee Activities and Requirements
6. Report and Records
7. Clarification or Amendment to the Terms of Reference
8. Annex I: List of Potential Valued Components

Committee Activities and Requirements

- ***Indigenous and Public Participation***
- ***Information and Analysis***
 - *Sources of information*
 - *Description of existing conditions*
 - *Description of potential development activities*
 - *Identification of information and knowledge gaps or uncertainties*
 - *Analyses of potential effects*
 - *Identification of valued components*
 - *Analyses of potential effects on valued components*
 - *Conclusions and recommendations*
- ***Administration and Reporting***



Potential Valued Components



Forest Ecosystem Processes – Grazing and Browsing Levels

Forest Ecosystem Processes - Fire Regime

Forest Bird Community

Terrestrial Plant Communities (including impacts from invasive species)

Core Habitat

Forest Structural Connectivity

Meadow Structural Connectivity

Grassland Bird Community

Fish and Fish Habitat

Wetlands – Wetland Function

Wetlands – Wetland Area

Aquatic and Riparian Plant Communities (including impacts from invasive species)

Hydrological Conditions

Aquatic Structural Connectivity

Blandings and Snapping turtle connectivity

Blanding's Turtle

Snapping turtle

Redside Dace

Map Turtle and Midland Painted turtle



Potential Valued Components (continued)



Frogs/Amphibians

Butternut

Eastern Milksnake

Wildlife Health - Road Mortality

Wildlife Health - Human Wildlife Conflict
(including garbage, animal
relocation/releases, light and noise
disturbance)

Wildlife Health - Disease

Migratory Birds

Water - Groundwater Quality and Quantity

Water - Surface Water Quality and Quantity

Bats (Little Brown Myotis, Northern Myotis,
Tri-colored Bat)

Economic viability of farms within the Rouge
National Urban Park

Cultural values of farming community within
the Rouge National Urban Park

Air quality for visitors

Light pollution for visitors

Sound disturbance for visitors

Accessibility for visitors

Differential impacts on visitors (Gender-
Based Analysis Plus)

Visitation Increases and Visitor Use Patterns



Public participation

HOW YOU CAN PARTICIPATE



Why submit comments?

The Terms of Reference specify how the Study will be carried out.

Your participation will:

- inform the scope and approach for the Study
- support meaningful public participation and the assessment of potential effects that are important to you
- ensure the Study Report and outcomes can address key issues that are important to you





How to submit comments



Easily find and access all information on the **Canadian Impact Assessment Registry**

- Read the draft Terms of Reference: <https://iaac-aeic.gc.ca/050/evaluations/document/148791?culture=en-CA>
- Use the “Submit a Comment” feature on the study page: <https://iaac-aeic.gc.ca/050/evaluations/proj/84459?culture=en-CA>

Registry website: www.canada.ca/ciar



How do I get information about public participation opportunities?

- To subscribe to Agency news and updates, go to: <https://iaac-aeic.gc.ca/002/admission-eng.aspx>
- To sign up for the distribution list for the Study, email parkstudy-etudeparc@iaac-aeic.gc.ca
- Twitter: https://twitter.com/iaac_aeic

For more information on principles of public participation, visit:

www.canada.ca/en/impact-assessment-agency/services/policy-guidance/public-participation-impact-assessment-fact-sheet.html





Contact us

General Information:

Rouge National Urban Park Study
Impact Assessment Agency of Canada
160 Elgin, 22nd Floor, Ottawa, ON, K1A 0H3
613-293-5216 / parkstudy-etudeparc@iaac-aeic.gc.ca

Media Relations:

[343-549-3870](tel:343-549-3870) / media@iaac-aeic.gc.ca

Participant Funding Program:

FP-PAF@iaac-aeic.gc.ca



Polls

Questions and answers

