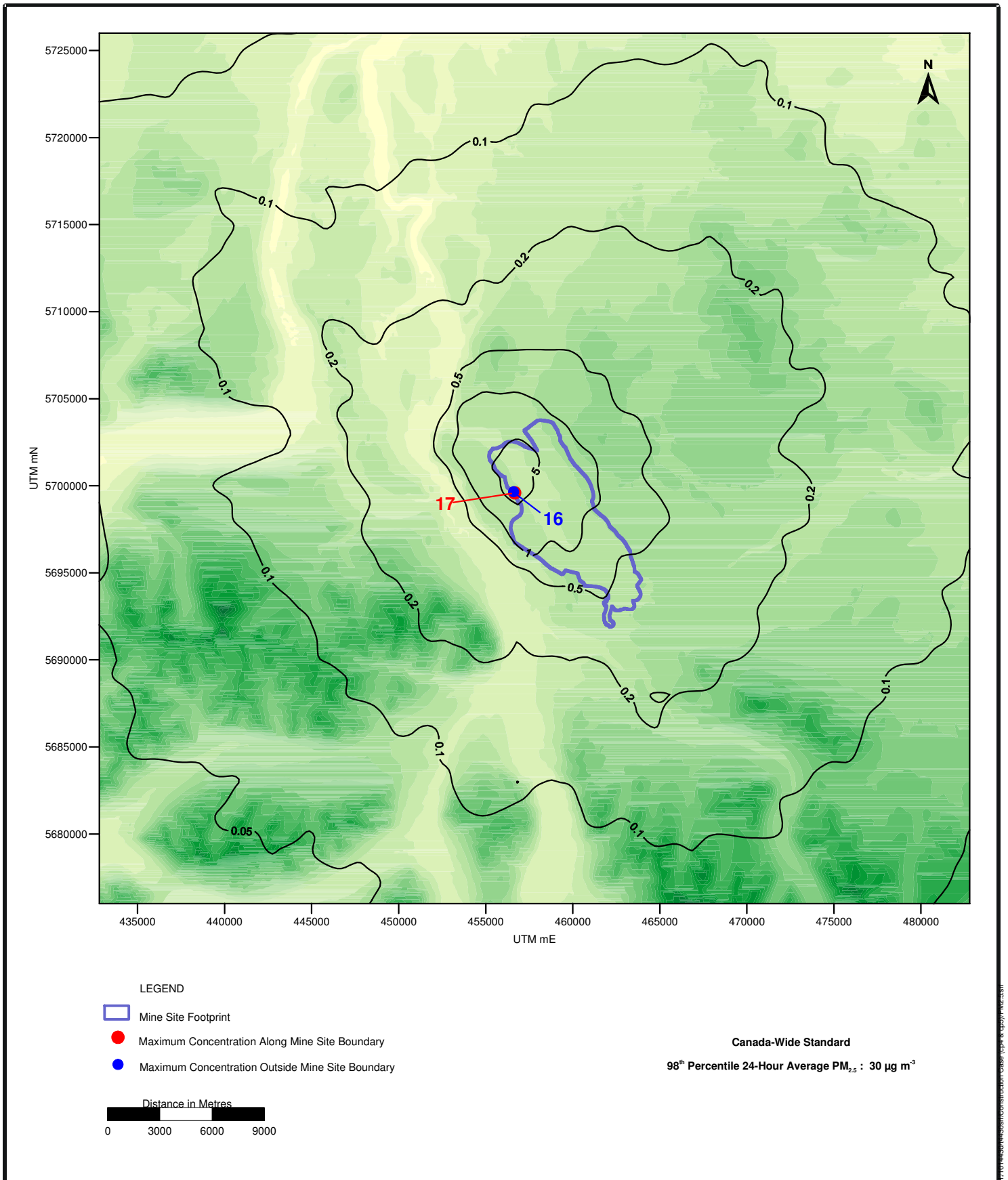
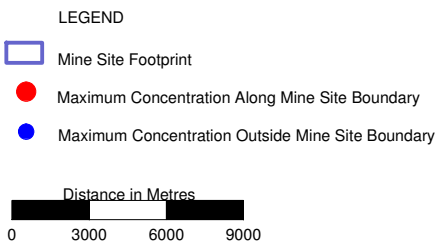
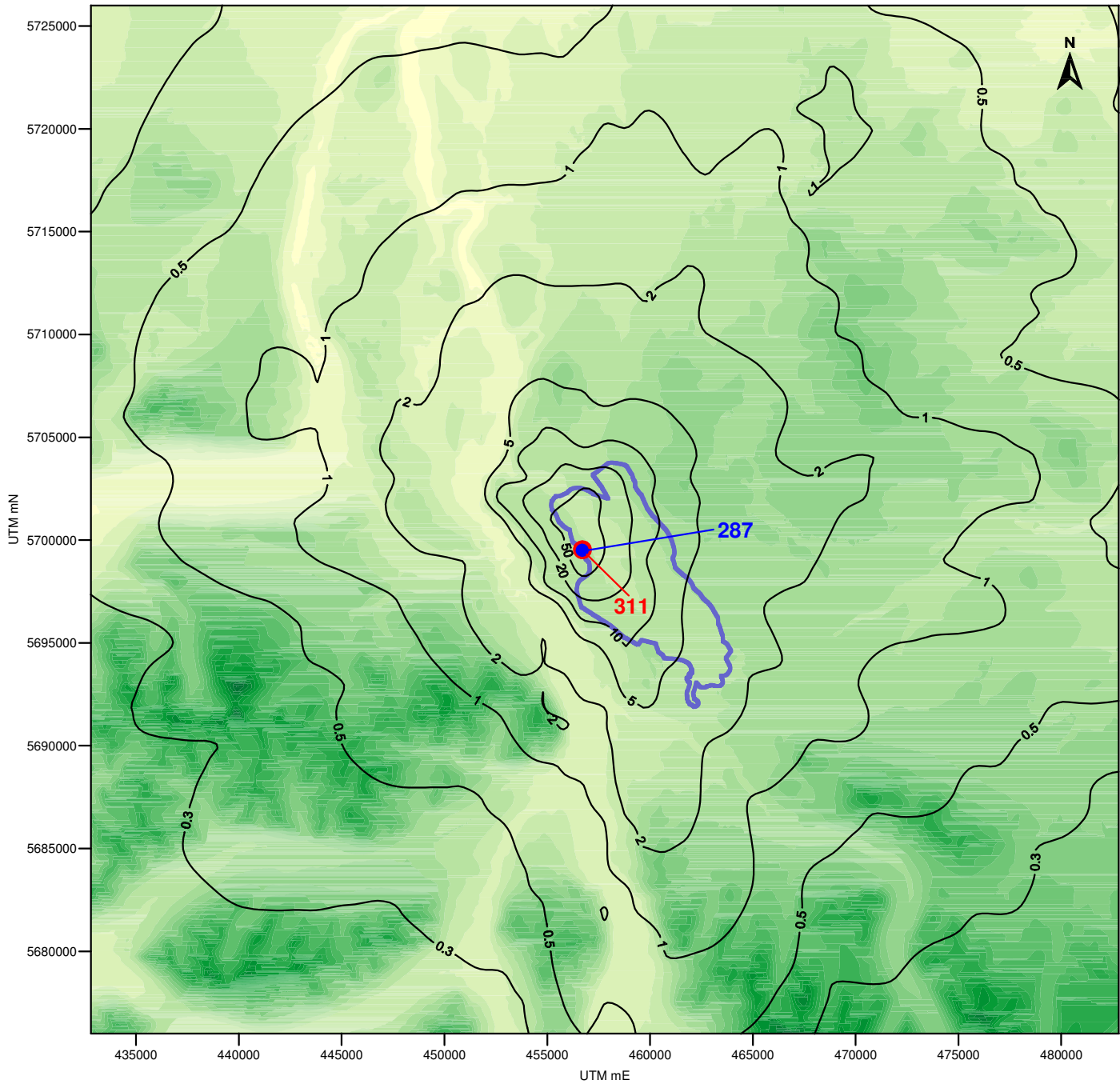


Appendix 4-2-B Dispersion Modelling Isopleth Maps



	PROSPERITY GOLD-COPPER PROJECT	DRAFT DATE	02/11/07
		REVISION DATE	20/11/07
FIGURE NO. B-1	Predicted 98th Percentile 24-Hour Average Ground-level $PM_{2.5}$ Concentrations ($\mu g m^{-3}$) Associated with the Construction Phase	PREPARED FOR 	



British Columbia Level B Air Quality Objective
24-Hour Average PM₁₀ : 50 µg m⁻³



PROSPERITY GOLD-COPPER PROJECT

DRAFT DATE
02/11/07

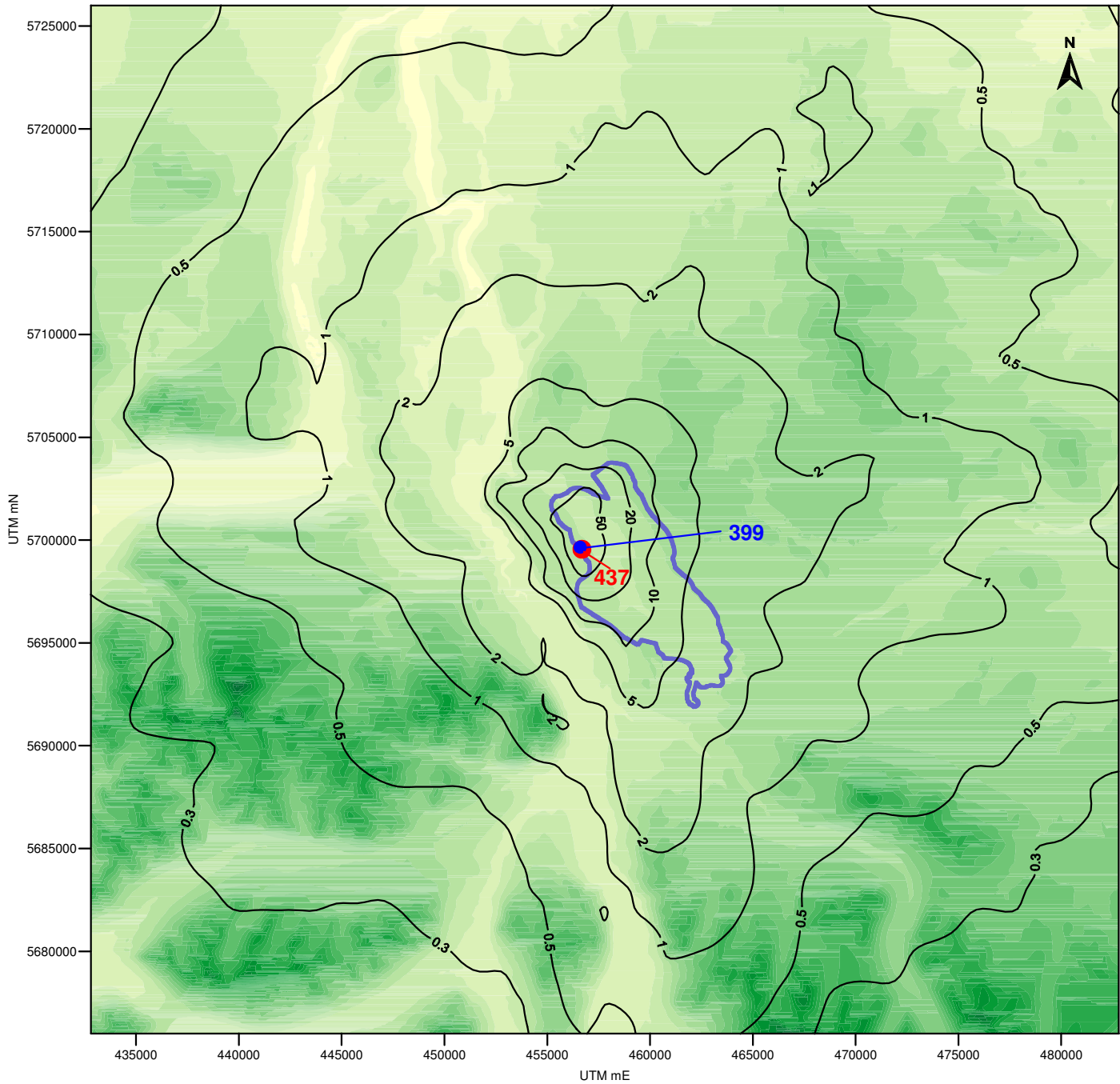
REVISION DATE
20/11/07

FIGURE NO.
B-2

**Predicted 24-Hour Average Ground-level PM₁₀ Concentrations (µg m⁻³)
 Associated with the Construction Phase**

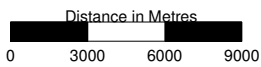
PREPARED FOR
 Taseko Mines Limited

H:\Projects\Prosperity\Construction\Map\Map_24hr_avg_pm10.mxd



- LEGEND
- Mine Site Footprint
 - Maximum Concentration Along Mine Site Boundary
 - Maximum Concentration Outside Mine Site Boundary

British Columbia Level A Air Quality Objective
 24-Hour Average TSP : 150 $\mu\text{g m}^{-3}$



PROSPERITY GOLD-COPPER PROJECT

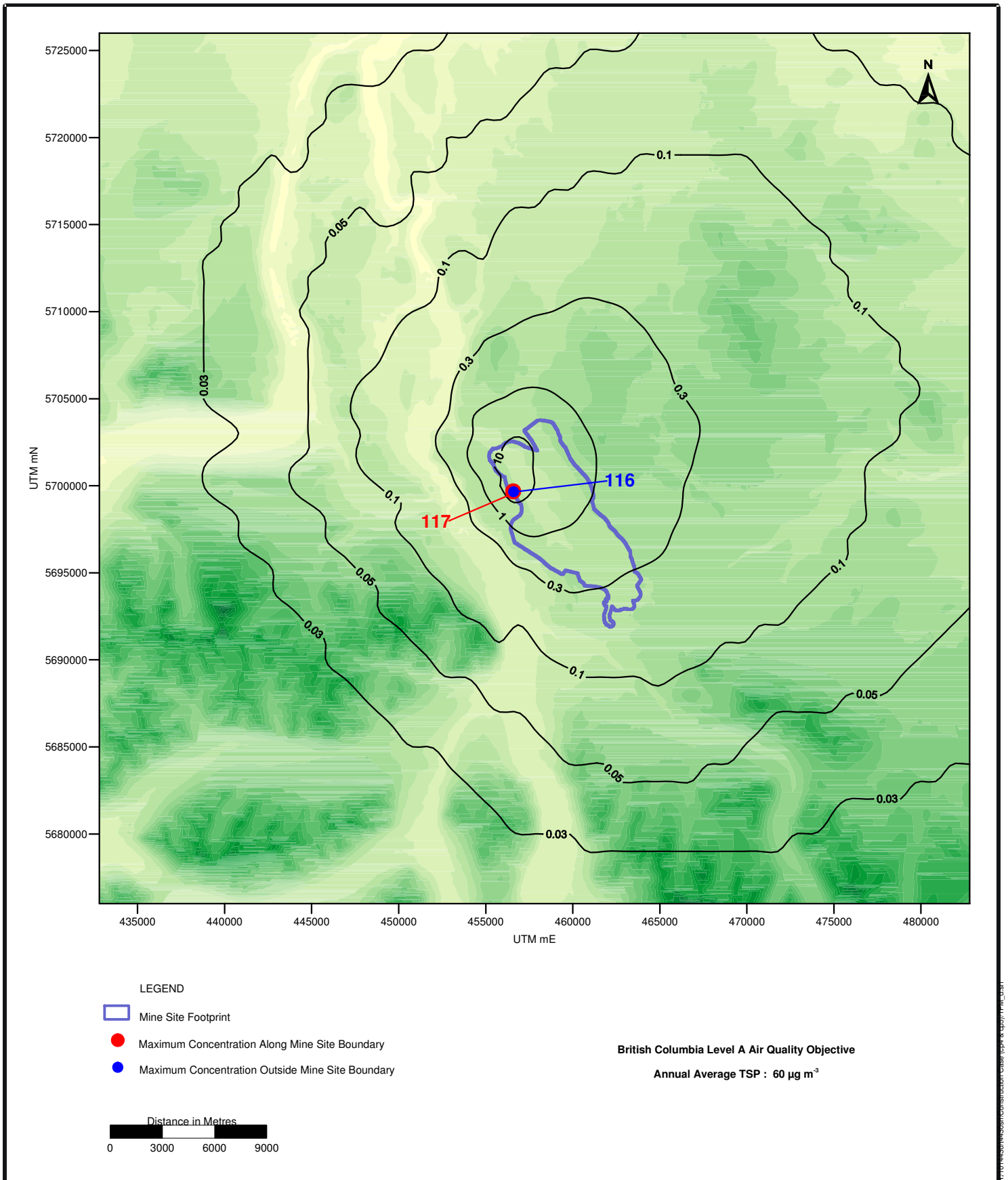
DRAFT DATE
02/11/07
 REVISION DATE
20/11/07

FIGURE NO.
B-3

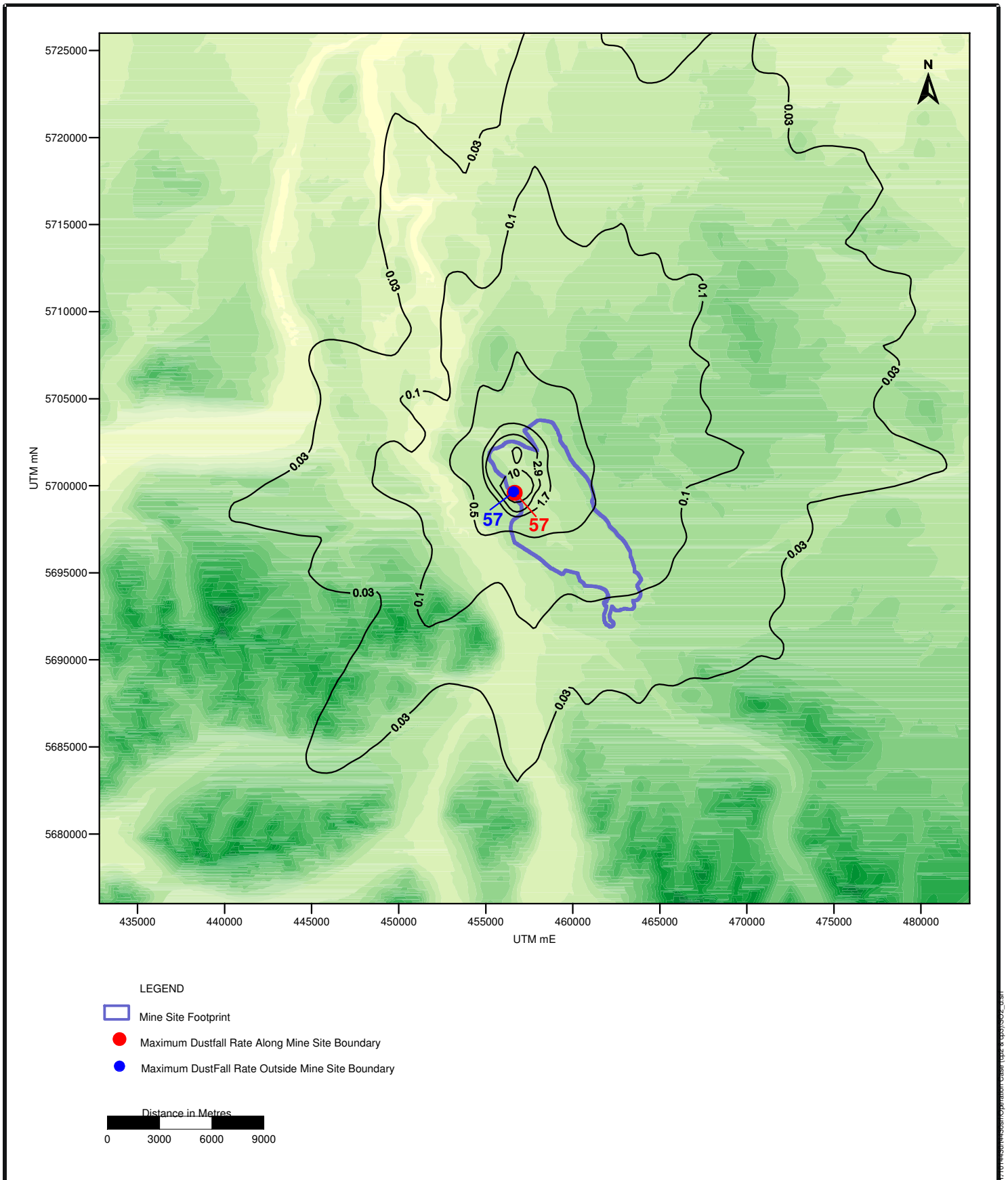
**Predicted 24-Hour Average Ground-level TSP Concentrations ($\mu\text{g m}^{-3}$)
 Associated with the Construction Phase**

PREPARED FOR
Taseko Mines Limited

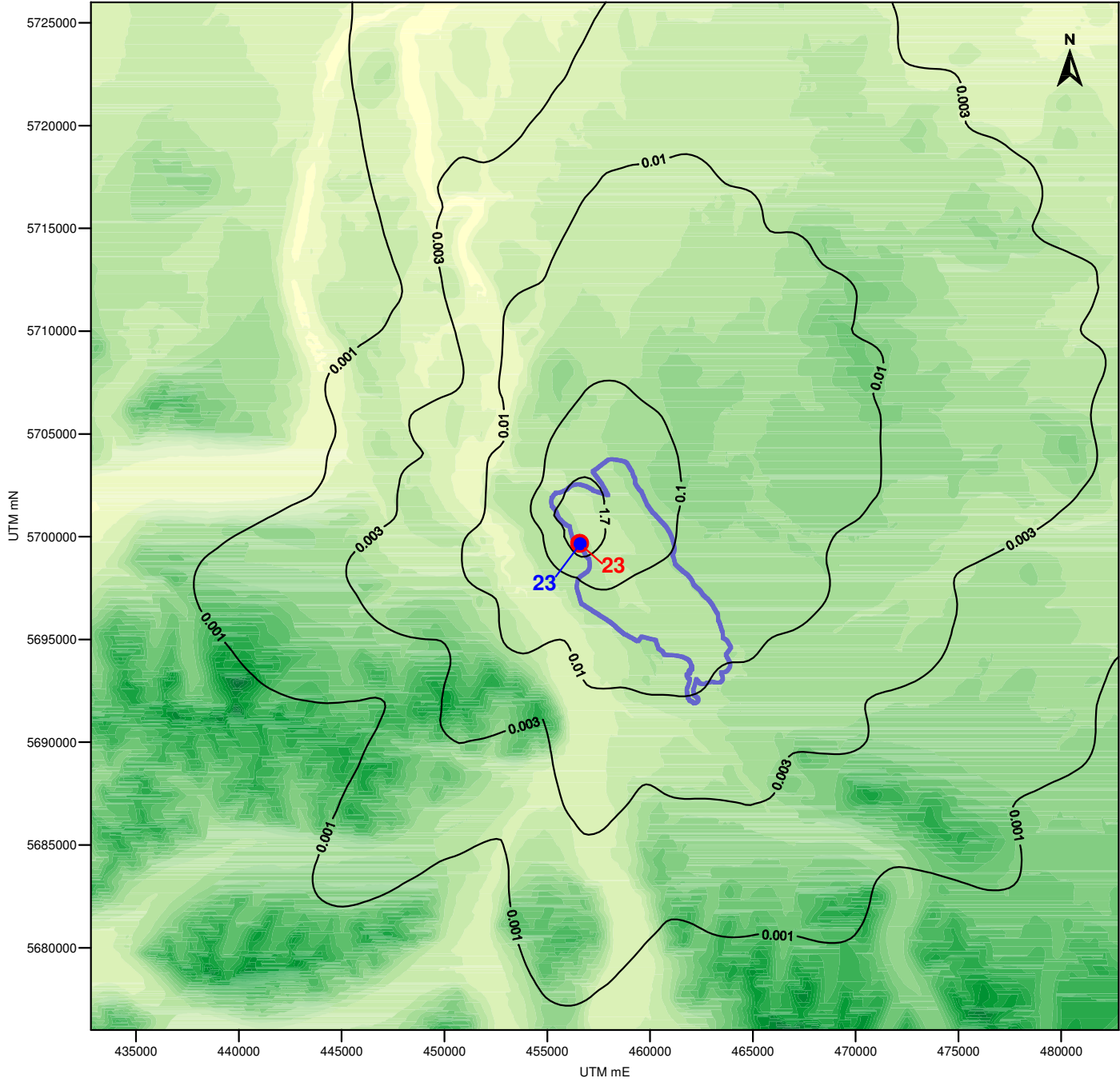
H:\Projects\Prosperity\Construction\Map\Map_24_Hour_TSP_11_07.mxd



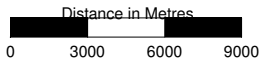
	PROSPERITY GOLD-COPPER PROJECT	DRAFT DATE 02/11/07
		REVISION DATE 20/11/07
FIGURE NO. B-4	Predicted Annual Average Ground-level TSP Concentrations ($\mu\text{g m}^{-3}$) Associated with the Construction Phase	PREPARED FOR



	PROSPERITY GOLD-COPPER PROJECT	DRAFT DATE	14/11/07
		REVISION DATE	03/12/07
FIGURE NO. B-5	Predicted 24-Hour Average Ground-level DF Rate (mg/dm²/d) Associated with the Construction Phase	PREPARED FOR 	



- LEGEND
- Mine Site Footprint
 - Maximum Dustfall Rate Along Mine Site Boundary
 - Maximum Dustfall Rate Outside Mine Site Boundary



British Columbia MOE Pollution Control Objective
Monthly Average DF Rate : 1.7-2.9 mg/dm²/d

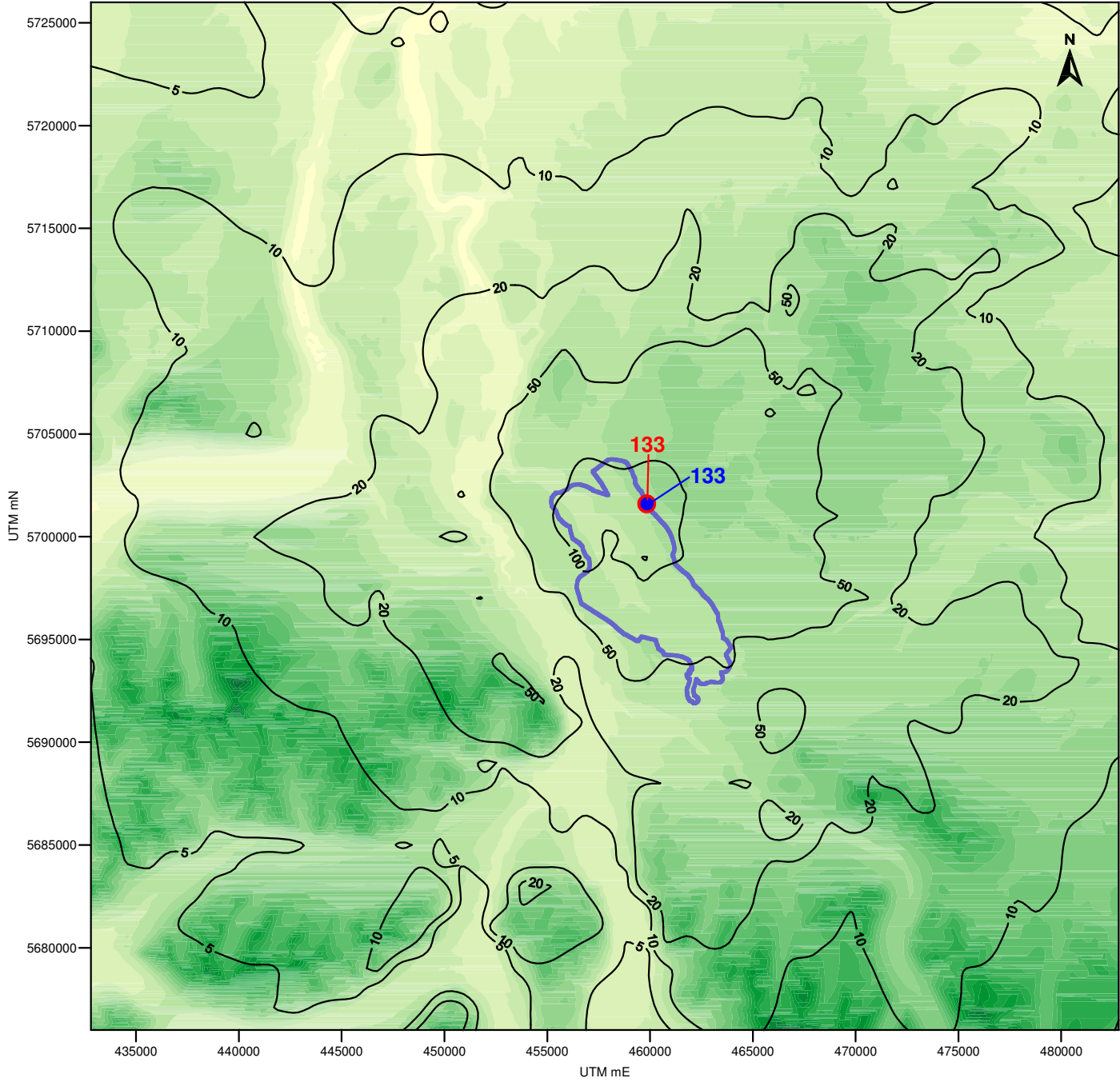
FIGURE NO.
B-6

PROSPERITY GOLD-COPPER PROJECT

**Predicted Monthly Average Ground-level DF Rate (mg/dm²/d)
 Associated with the Construction Phase**

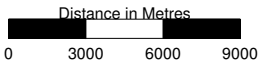
DRAFT DATE	14/11/07
REVISION DATE	03/12/07
PREPARED FOR	Taseko Mines Limited

H:\PROSPERITY\GIS\MapServer\MapServer_Cache\MapServer_Cache_57075000.mxd



- LEGEND
- Mine Site Footprint
 - Maximum Concentration Along Mine Site Boundary
 - Maximum Concentration Outside Mine Site Boundary

Maximum Acceptable National Ambient Air Quality Objective
 One-Hour Average NO₂ : 400 µg m⁻³



Jacques Whitford
 AXYS

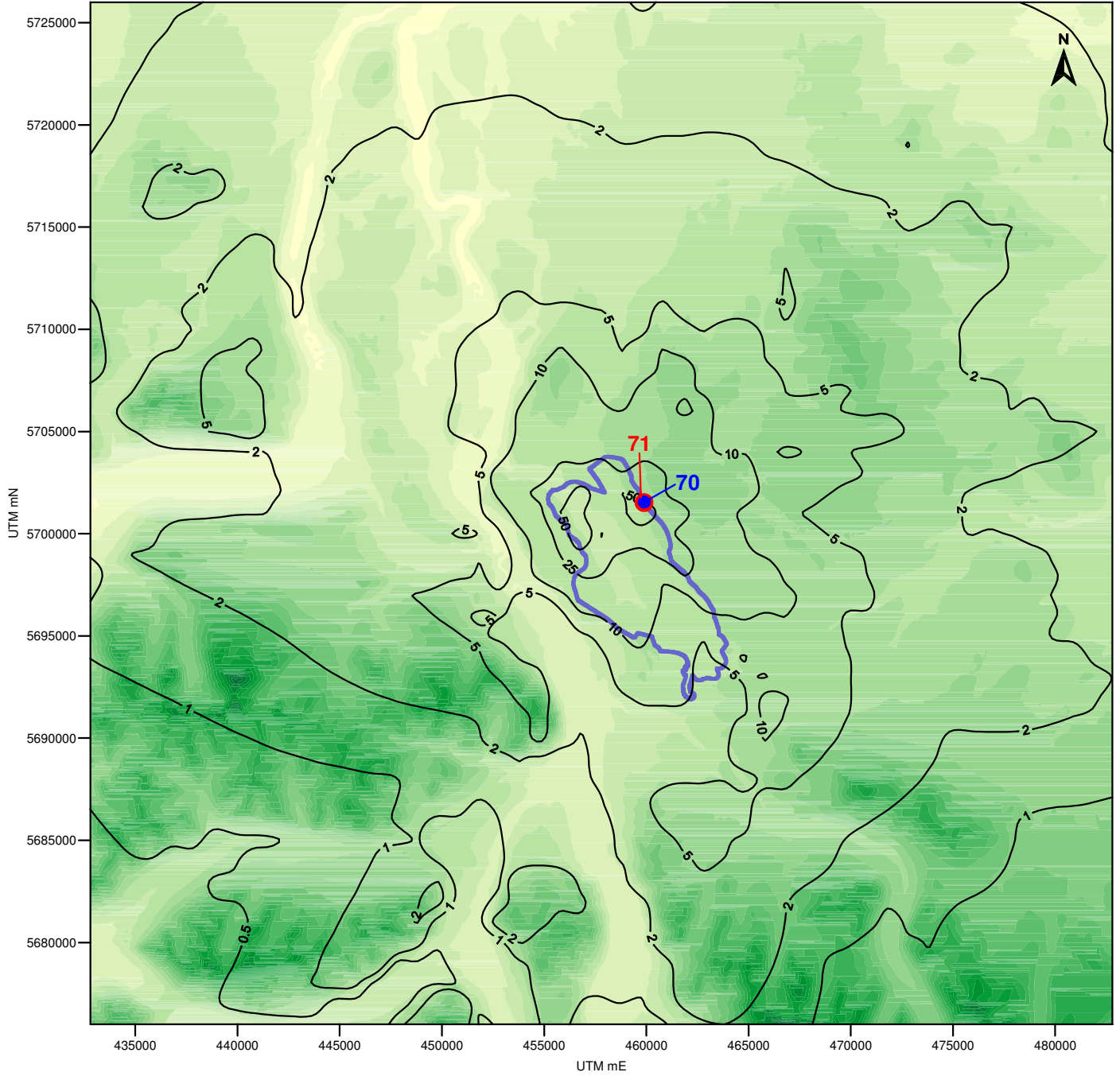
FIGURE NO.
B-7

PROSPERITY GOLD-COPPER PROJECT

**Predicted One-Hour Average Ground-level NO₂ Concentrations (µg m⁻³)
 Associated with the Construction Phase**

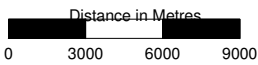
DRAFT DATE	02/11/07
REVISION DATE	16/11/07
PREPARED FOR	Taseko Mines Limited

H:\PROSPERITY\GIS\CONSTRUCTION\CONSTR_021107\NO2_C11071



- LEGEND
- Mine Site Footprint
 - Maximum Concentration Along Mine Site Boundary
 - Maximum Concentration Outside Mine Site Boundary

Maximum Acceptable National Ambient Air Quality Objective
 24-Hour Average NO₂ : 200 µg m⁻³



PROSPERITY GOLD-COPPER PROJECT

DRAFT DATE
02/11/07

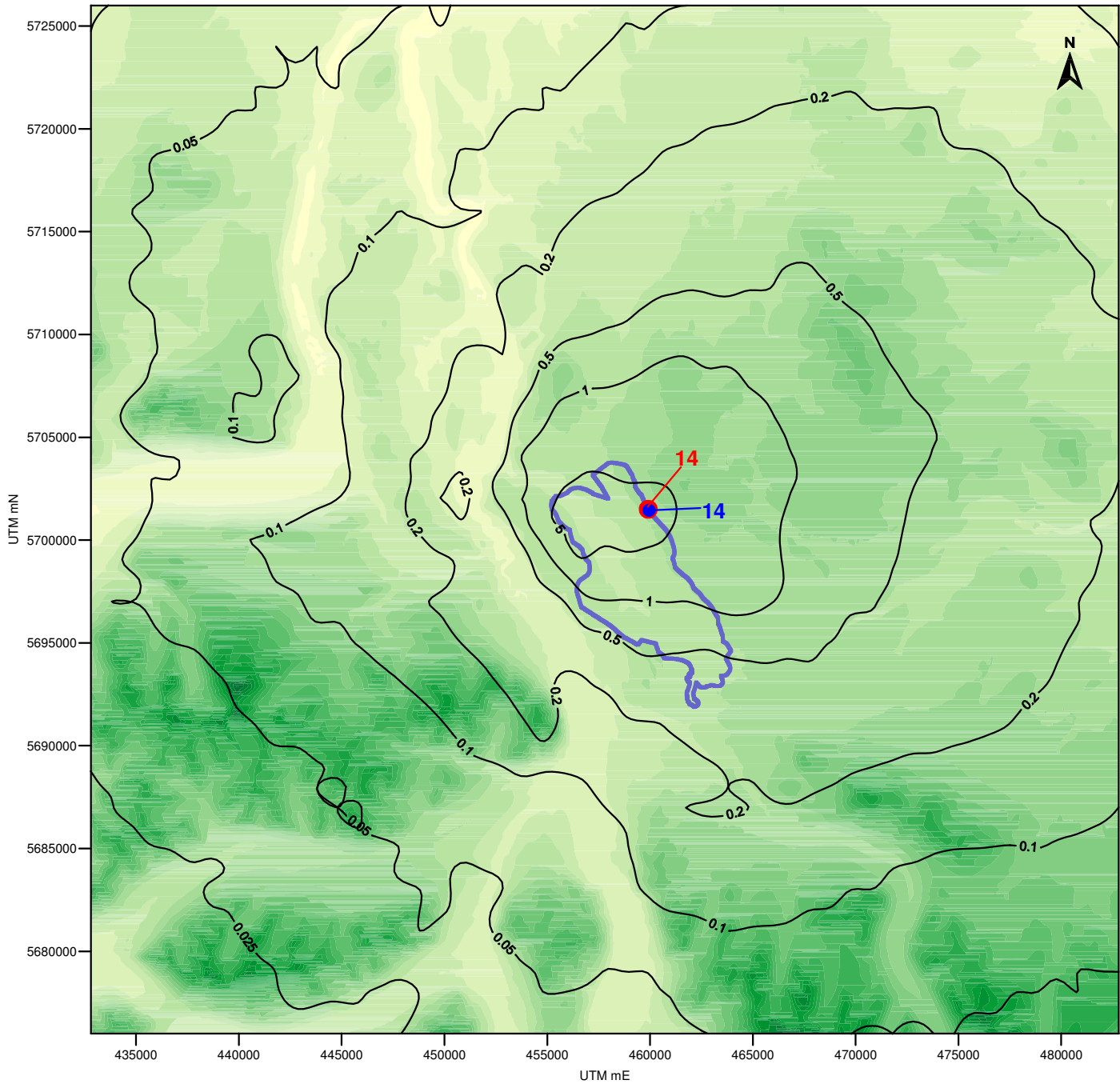
REVISION DATE
16/11/07



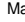
FIGURE NO.
B-8

**Predicted 24-Hour Average Ground-level NO₂ Concentrations (µg m⁻³)
 Associated with the Construction Phase**

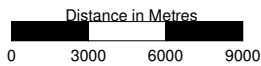
PREPARED FOR

H:\Projects\Prosperity\Construction\Map\Map_24hr_avg_NO2_Constr



- LEGEND
-  Mine Site Footprint
 -  Maximum Concentration Along Mine Site Boundary
 -  Maximum Concentration Outside Mine Site Boundary

Maximum Acceptable National Ambient Air Quality Objective
 Annual Average NO₂ : 60 µg m⁻³



PROSPERITY GOLD-COPPER PROJECT

DRAFT DATE
02/11/07

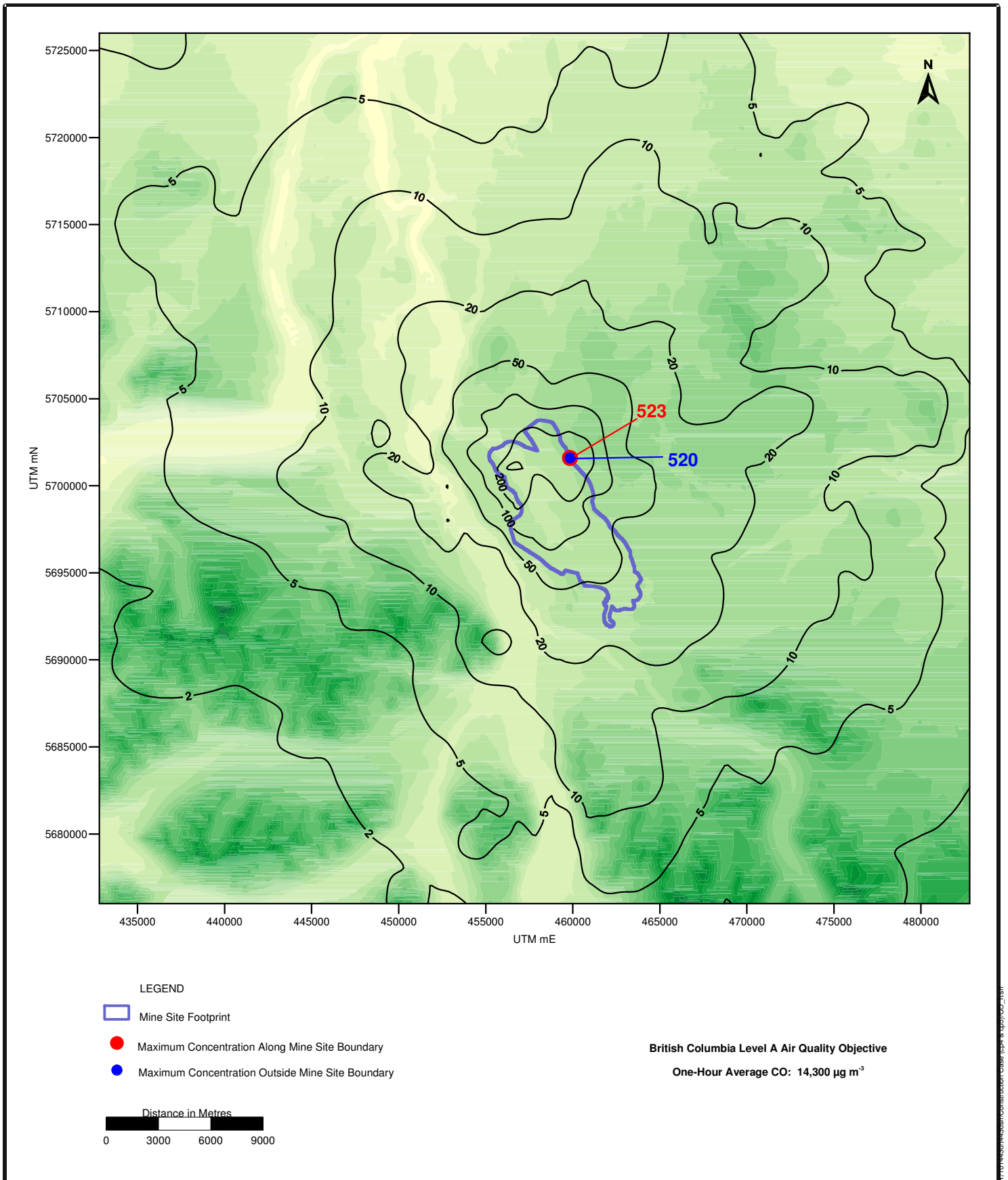
REVISION DATE
16/11/07

FIGURE NO.
B-9

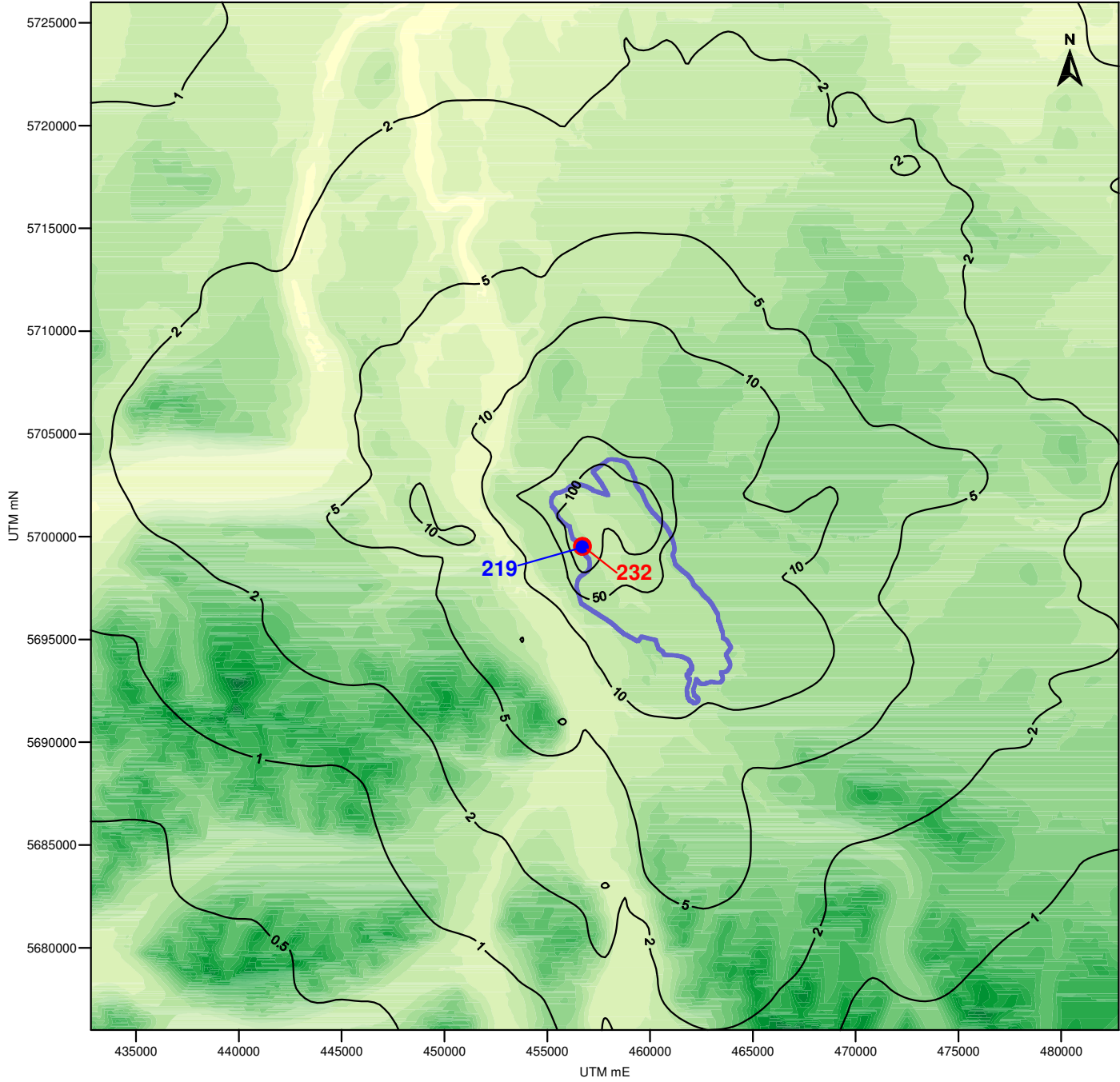
**Predicted Annual Average Ground-level NO₂ Concentrations (µg m⁻³)
 Associated with the Construction Phase**

PREPARED FOR


H:\Projects\Prosperity\Construction\Map\figs\B-9\B-9_07_07.mxd

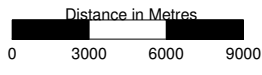


	PROSPERITY GOLD-COPPER PROJECT	DRAFT DATE	02/11/07
		REVISION DATE	16/11/07
FIGURE NO. B-10	Predicted One-Hour Average Ground-level CO Concentrations (µg m⁻³) Associated with the Construction Phase	PREPARED FOR 	



- LEGEND
- Mine Site Footprint
 - Maximum Concentration Along Mine Site Boundary
 - Maximum Concentration Outside Mine Site Boundary

British Columbia Level A Air Quality Objective
 Eight-Hour Average CO: 5,500 $\mu\text{g m}^{-3}$



PROSPERITY GOLD-COPPER PROJECT

DRAFT DATE
02/11/07

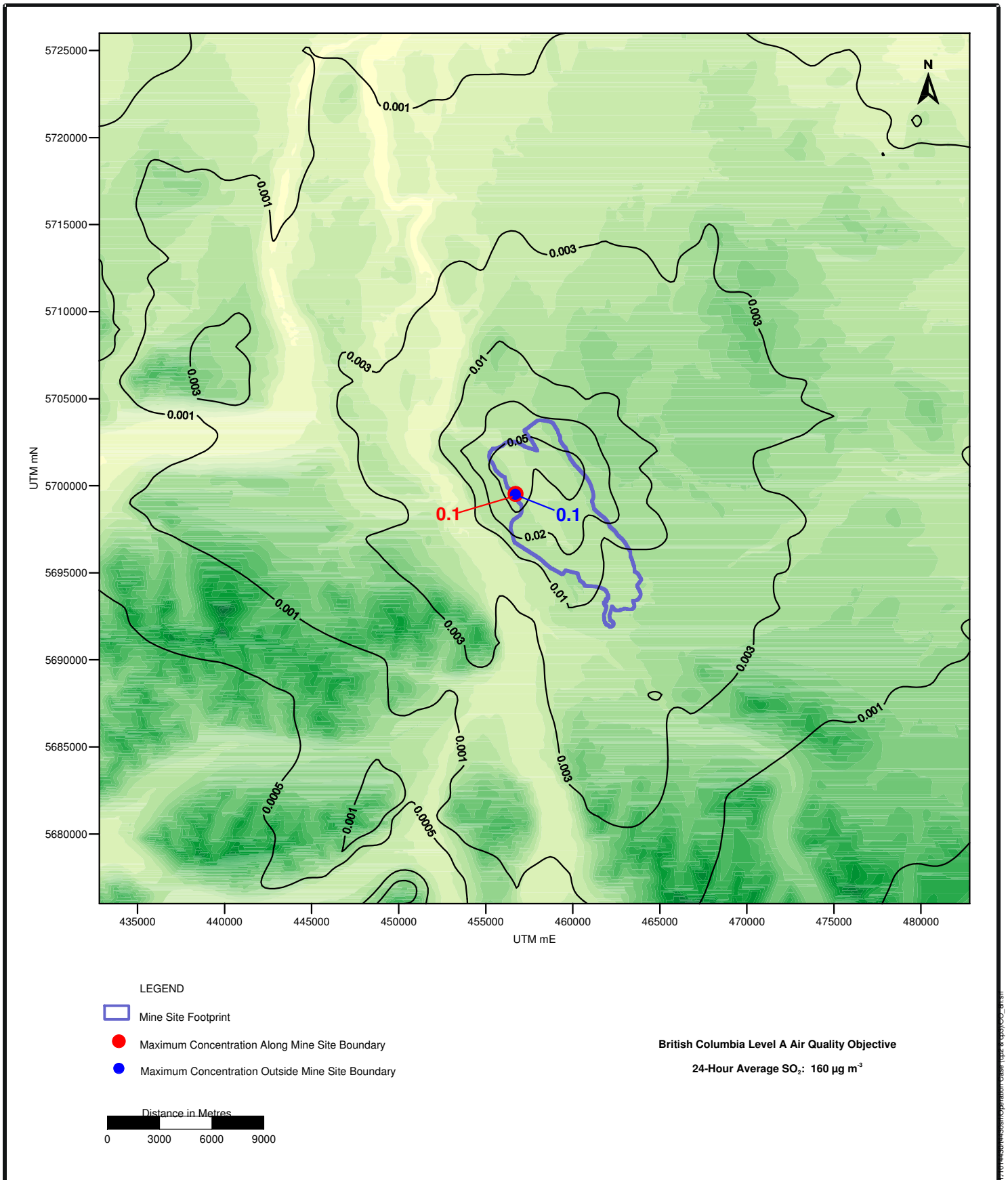
REVISION DATE
16/11/07

FIGURE NO.
B-11

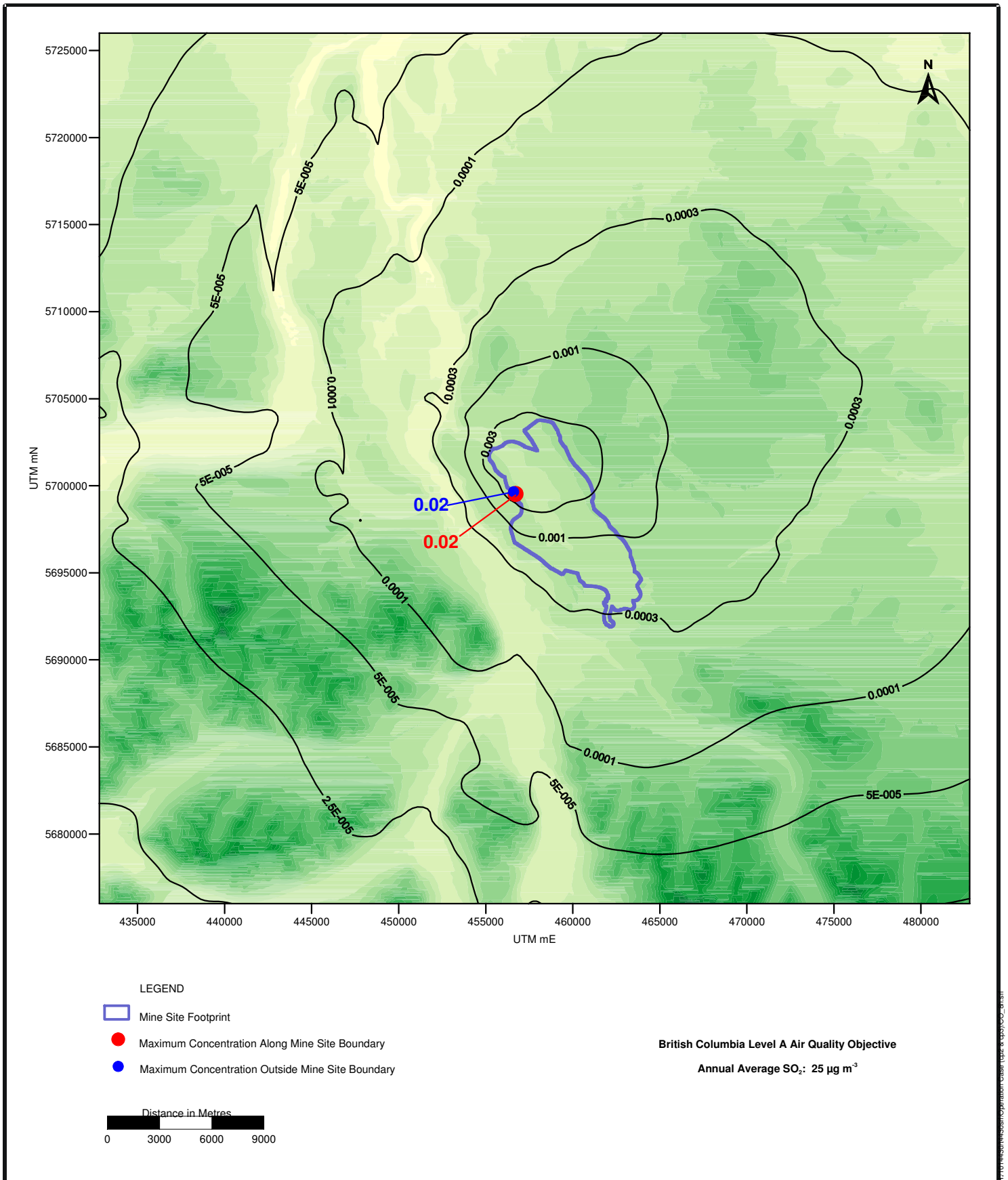
**Predicted Eight-Hour Average Ground-level CO Concentrations ($\mu\text{g m}^{-3}$)
 Associated with the Construction Phase**

PREPARED FOR

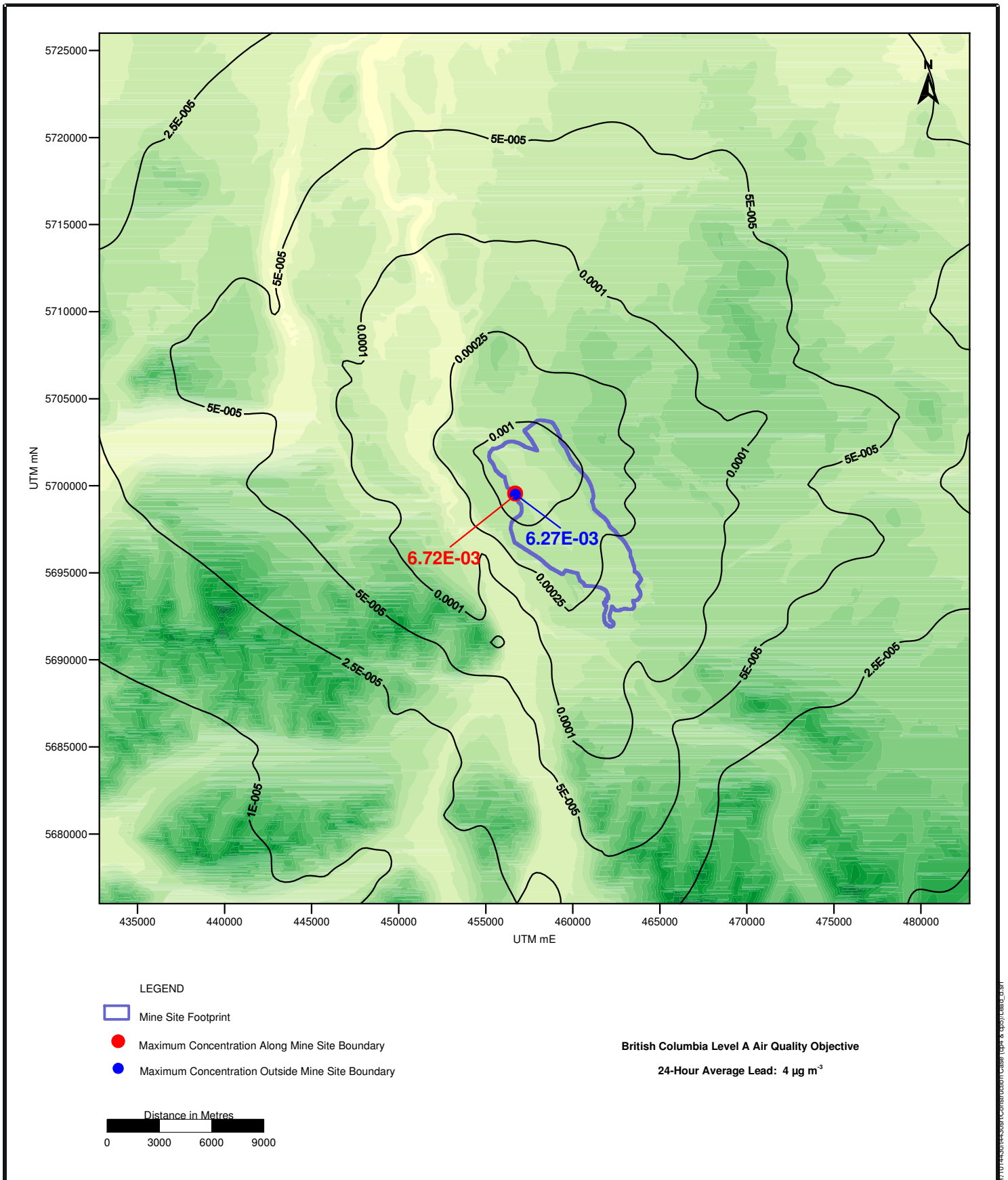
H:\Projects\Prosperity\Construction\CO\CO_8hr_2007_11_16.mxd



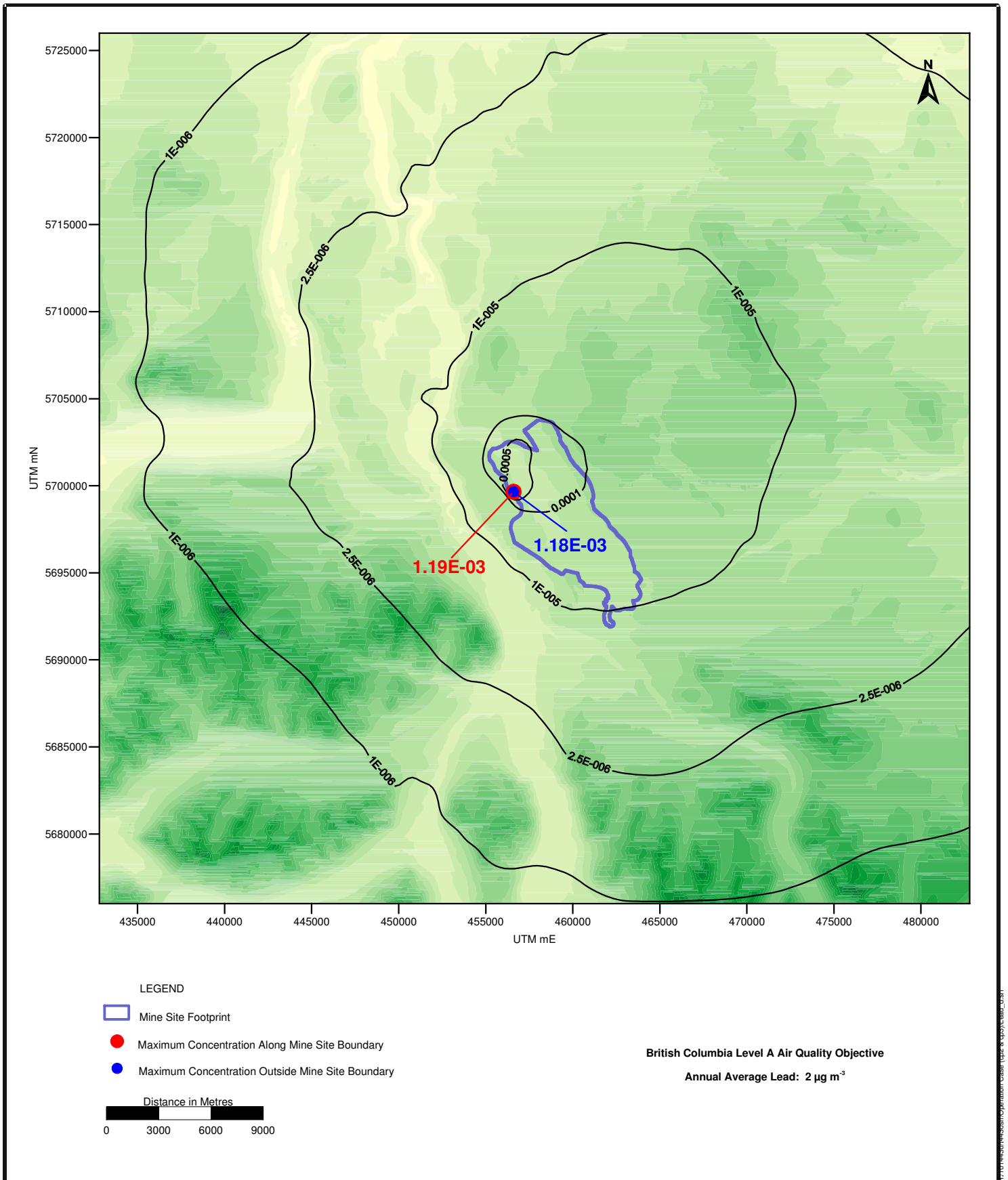
	PROSPERITY GOLD-COPPER PROJECT	DRAFT DATE	14/11/07
		REVISION DATE	16/11/07
FIGURE NO. B-13	Predicted 24-Hour Average Ground-level SO₂ Concentrations (µg m⁻³) Associated with the Construction Phase	PREPARED FOR 	



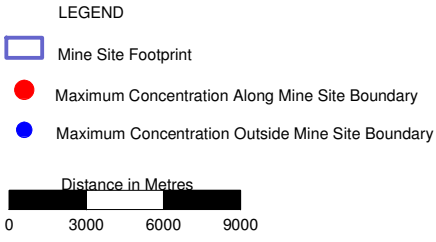
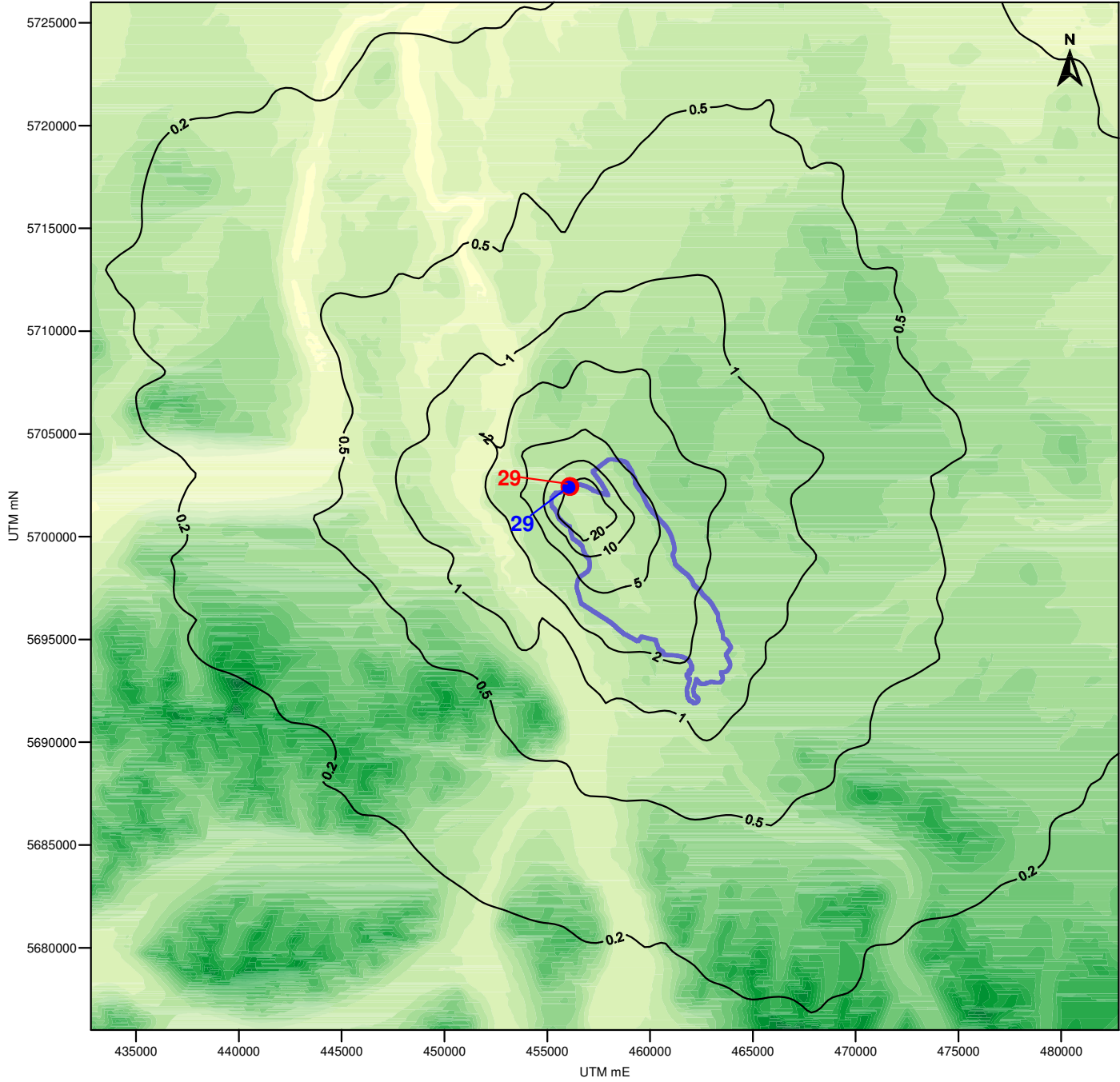
	PROSPERITY GOLD-COPPER PROJECT	DRAFT DATE	14/11/07
		REVISION DATE	14/11/07
FIGURE NO. B-14	Predicted Annual Average Ground-level SO₂ Concentrations (µg m⁻³) Associated with the Construction Phase	PREPARED FOR 	



	PROSPERITY GOLD-COPPER PROJECT	DRAFT DATE	02/11/07
		REVISION DATE	21/11/07
FIGURE NO. B-15	Predicted 24-Hour Average Ground-level Lead Concentration ($\mu\text{g m}^{-3}$) Associated with the Construction Phase	PREPARED FOR 	



	PROSPERITY GOLD-COPPER PROJECT	DRAFT DATE	02/11/07
		REVISION DATE	28/11/07
FIGURE NO. B-16	Predicted Annual Average Ground-level Lead Concentration ($\mu\text{g m}^{-3}$) Associated with the Construction Phase	PREPARED FOR 	



Canada-Wide Standard
 98th Percentile 24-Hour Average $PM_{2.5}$: $30 \mu g m^{-3}$



FIGURE NO.
B-17

PROSPERITY GOLD-COPPER PROJECT

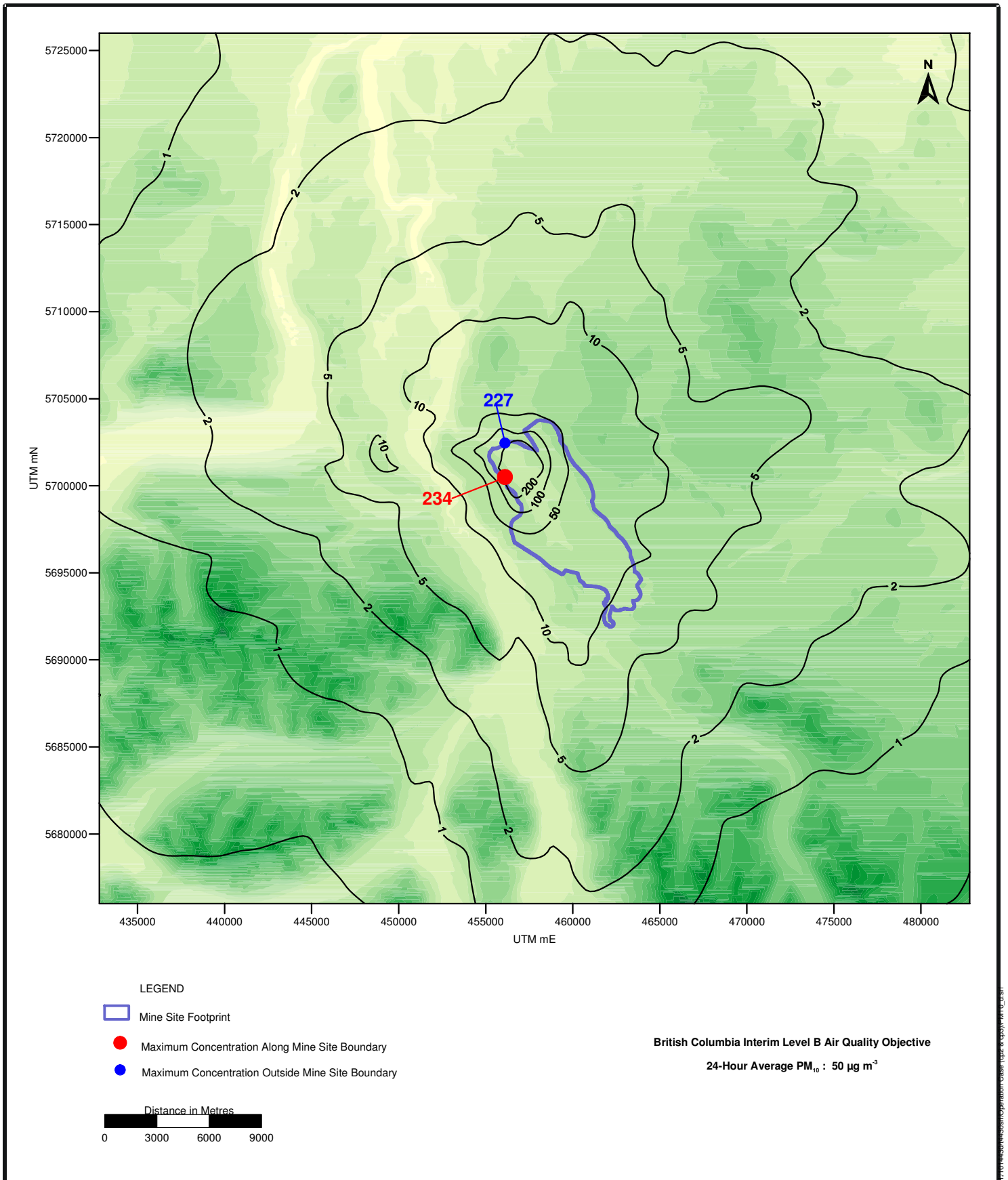
**Predicted 98th Percentile 24-Hour Average Ground-level $PM_{2.5}$ Concentrations ($\mu g m^{-3}$)
 Associated with the Operations Phase**

DRAFT DATE
02/11/07

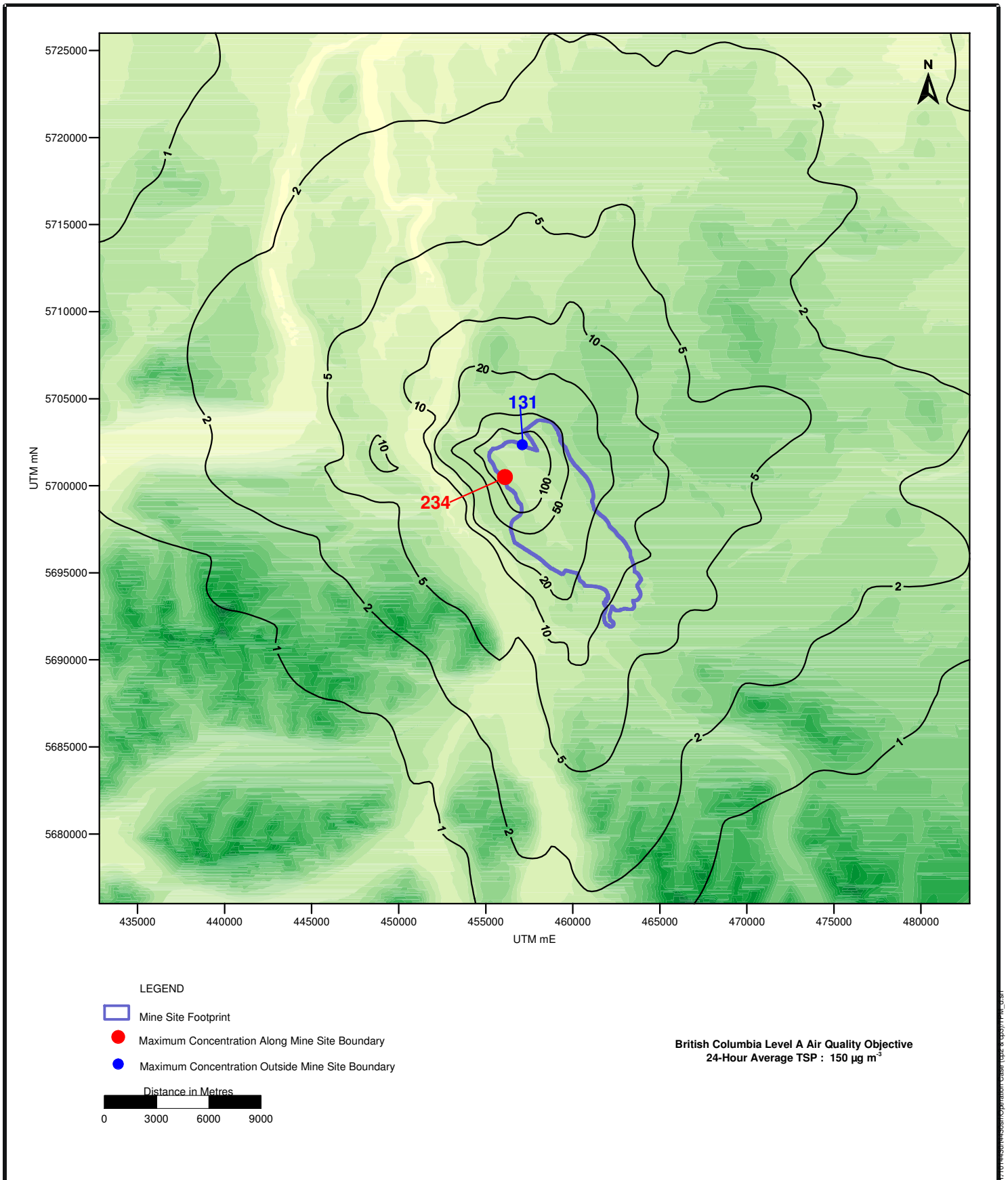
REVISION DATE
20/11/07

PREPARED FOR

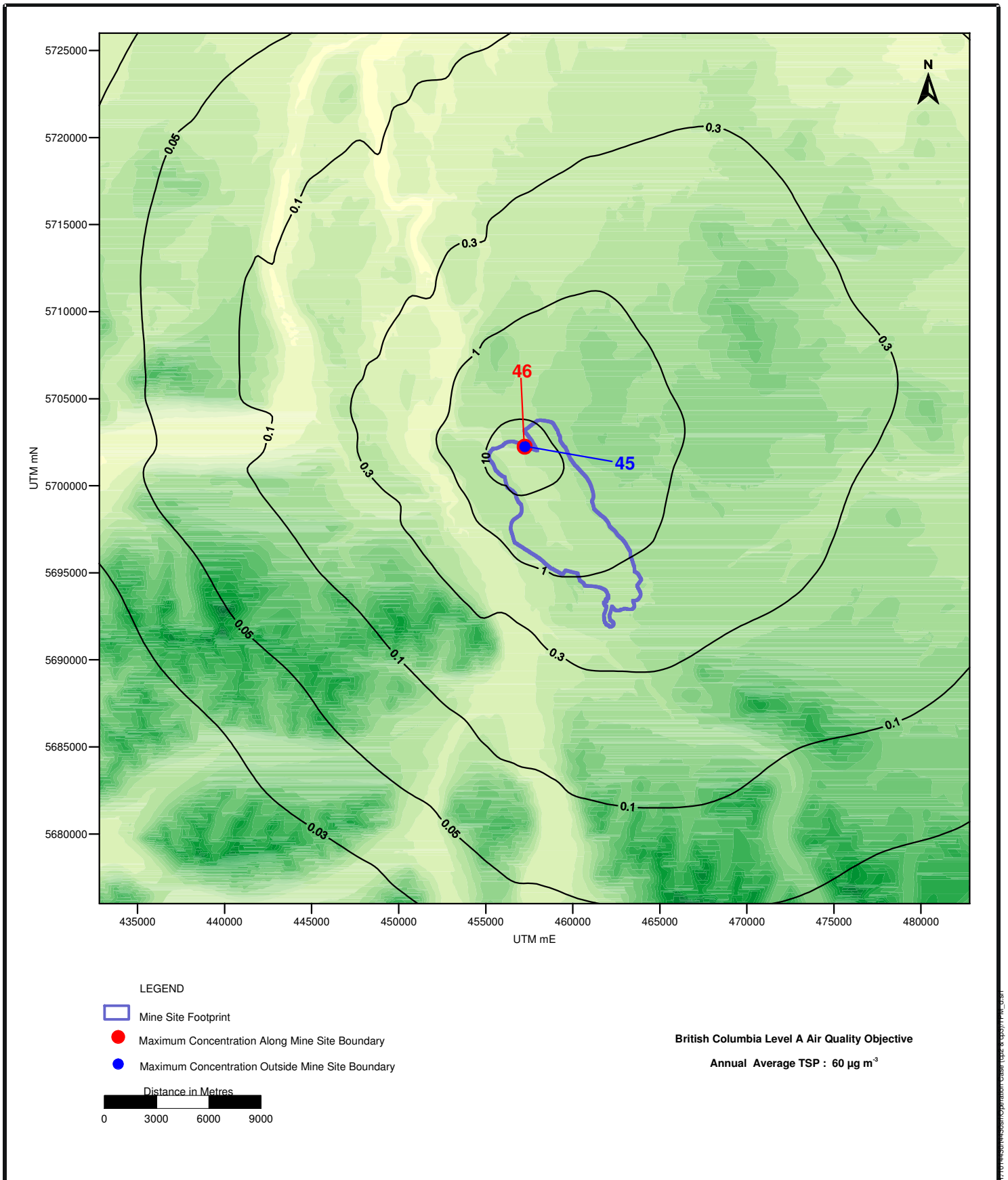

H:\PROSPERITY\GIS\Map_Series\Map_Series_02_11_07.mxd



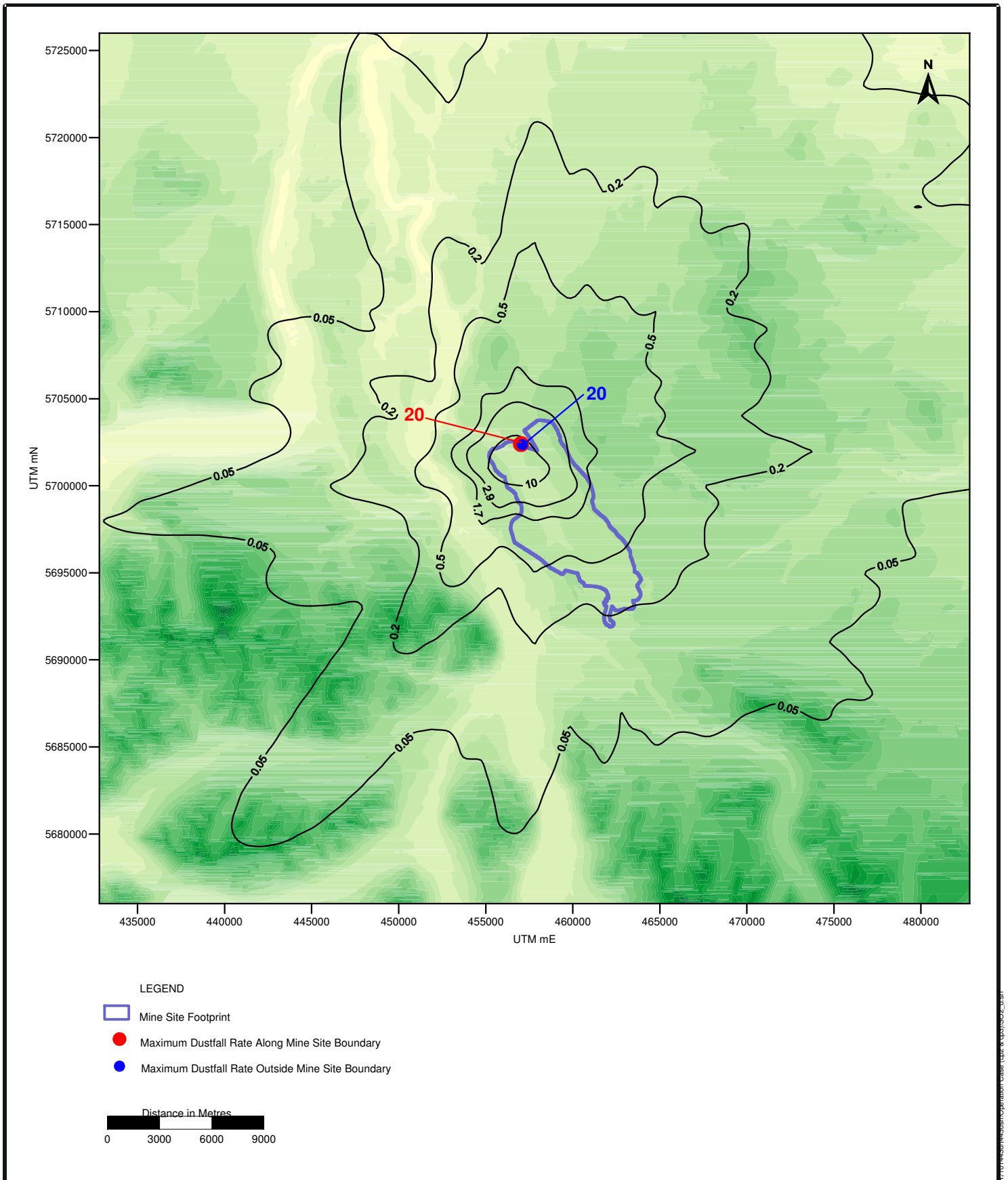
	PROSPERITY GOLD-COPPER PROJECT	DRAFT DATE 02/11/07
		REVISION DATE 20/11/07
FIGURE NO. B-18	Predicted 24-Hour Average Ground-level PM_{10} Concentrations ($\mu g m^{-3}$) Associated with the Operations Phase	PREPARED FOR



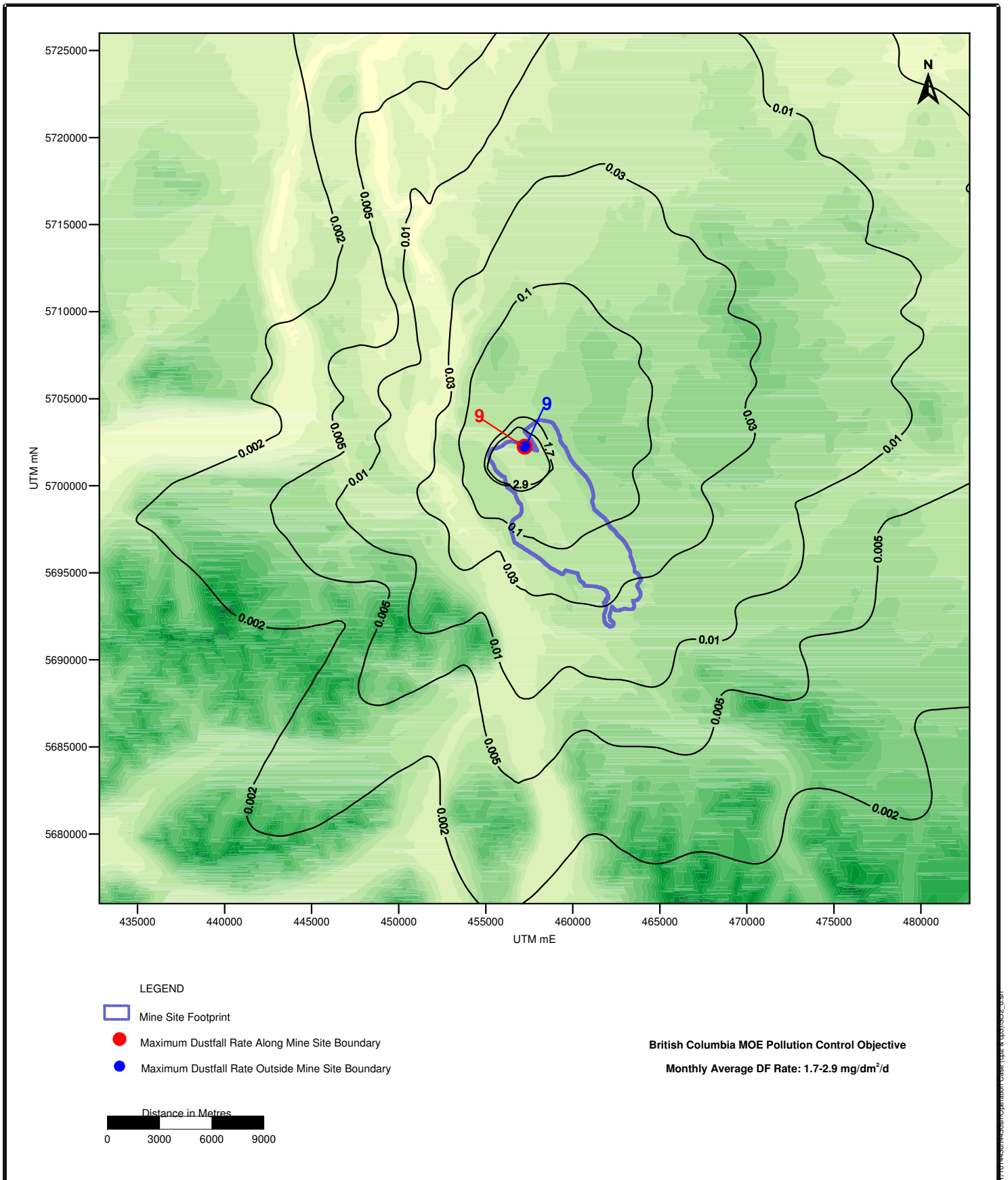
	PROSPERITY GOLD-COPPER PROJECT	DRAFT DATE 02/11/07
		REVISION DATE 20/11/07
FIGURE NO. B-19	Predicted 24-Hour Average Ground-level TSP Concentrations (µg m ⁻³) Associated with the Operations Phase	PREPARED FOR



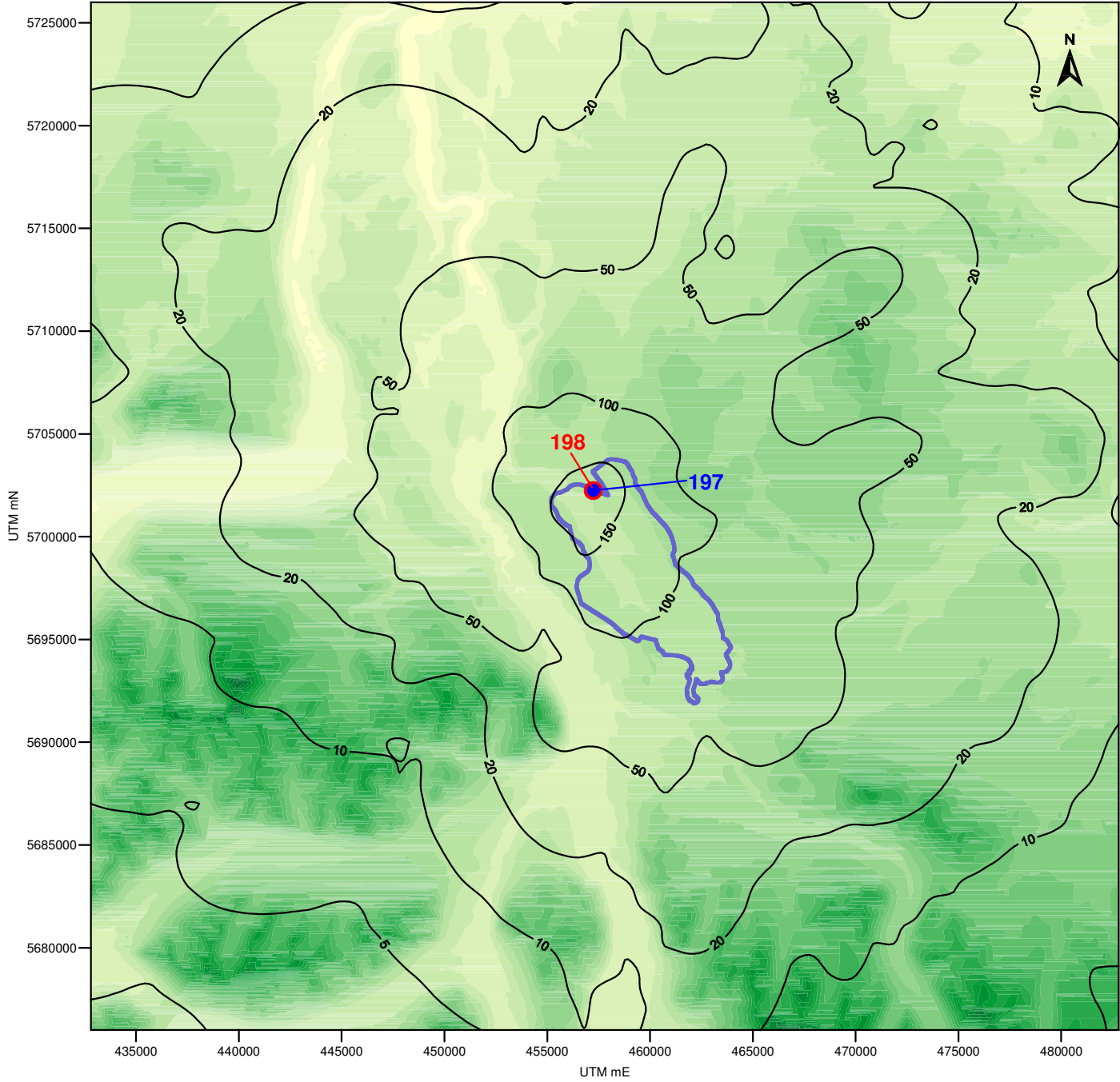
	PROSPERITY GOLD-COPPER PROJECT	DRAFT DATE 02/11/07
		REVISION DATE 20/11/07
FIGURE NO. B-20	Predicted Annual Average Ground-level TSP Concentrations (µg m ⁻³) Associated with the Operations Phase	PREPARED FOR



	PROSPERITY GOLD-COPPER PROJECT	DRAFT DATE	14/11/07
		REVISION DATE	03/12/07
FIGURE NO. B-21	Predicted 24-Hour Average Ground-level DF Rate (mg/dm²/d) Associated with the Operations Phase	PREPARED FOR 	

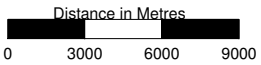


	PROSPERITY GOLD-COPPER PROJECT	DRAFT DATE 14/11/07
		REVISION DATE 03/12/07
FIGURE NO. B-22	Predicted Monthly Average Ground-level DF Rate (mg/dm²/d) Associated with the Operations Phase	PREPARED FOR



- LEGEND
- Mine Site Footprint
 - Maximum Concentration Along Mine Site Boundary
 - Maximum Concentration Outside Mine Site Boundary

Maximum Acceptable National Ambient Air Quality Objective
 One-Hour Average NO₂ : 400 µg m⁻³



PROSPERITY GOLD-COPPER PROJECT

DRAFT DATE
02/11/07

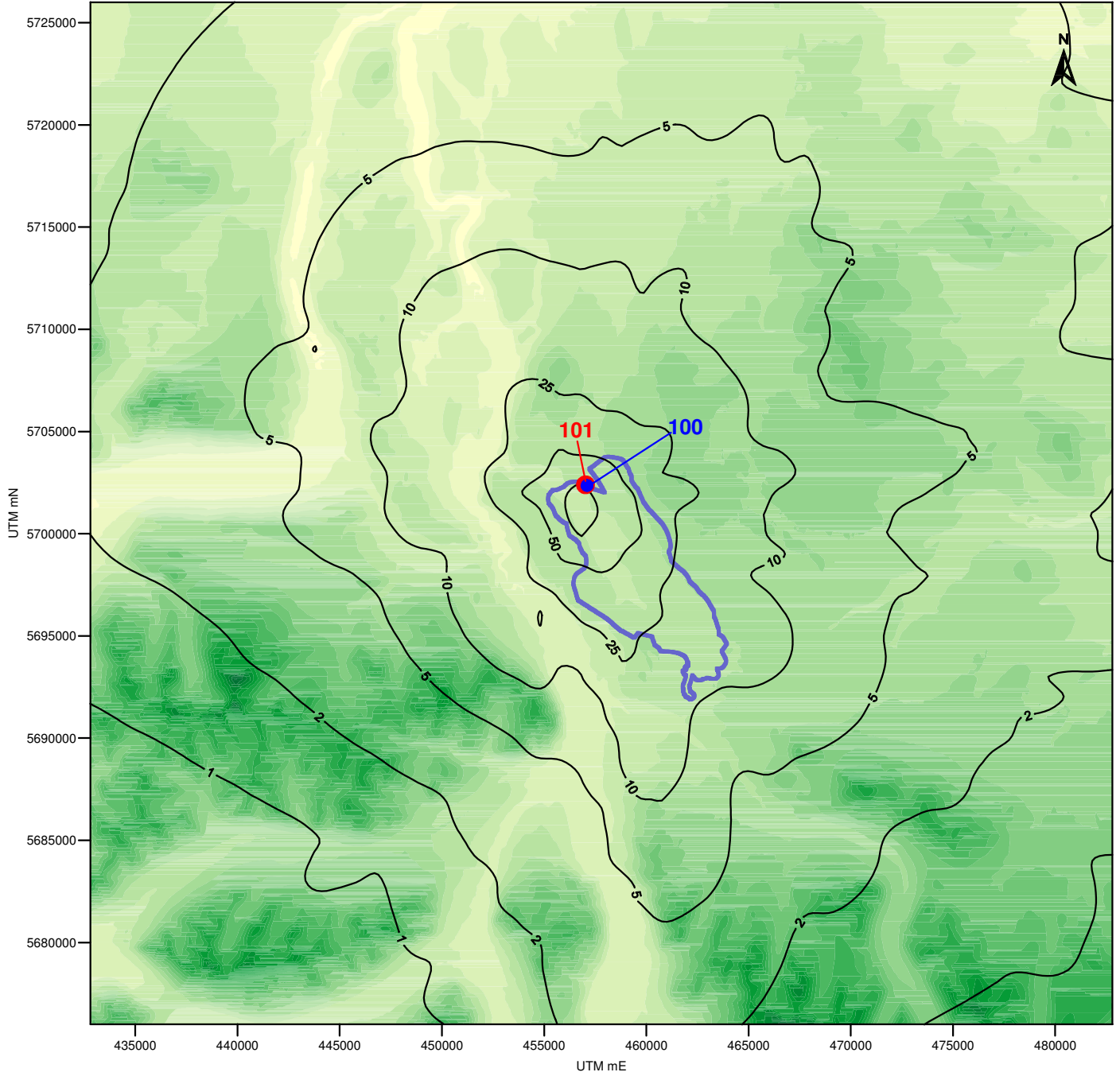
REVISION DATE
13/11/07

FIGURE NO.
B-23

**Predicted One-Hour Average Ground-level NO₂ Concentrations (µg m⁻³)
 Associated with the Operations Phase**

PREPARED FOR

H:\Projects\Prosperity\Operations\Map\fig_b-23\fig_b-23.mxd



LEGEND

- Mine Site Footprint
- Maximum Concentration Along Mine Site Boundary
- Maximum Concentration Outside Mine Site Boundary

Distance in Metres

Maximum Acceptable National Ambient Air Quality Objective
 24-Hour Average NO₂ : 200 µg m⁻³

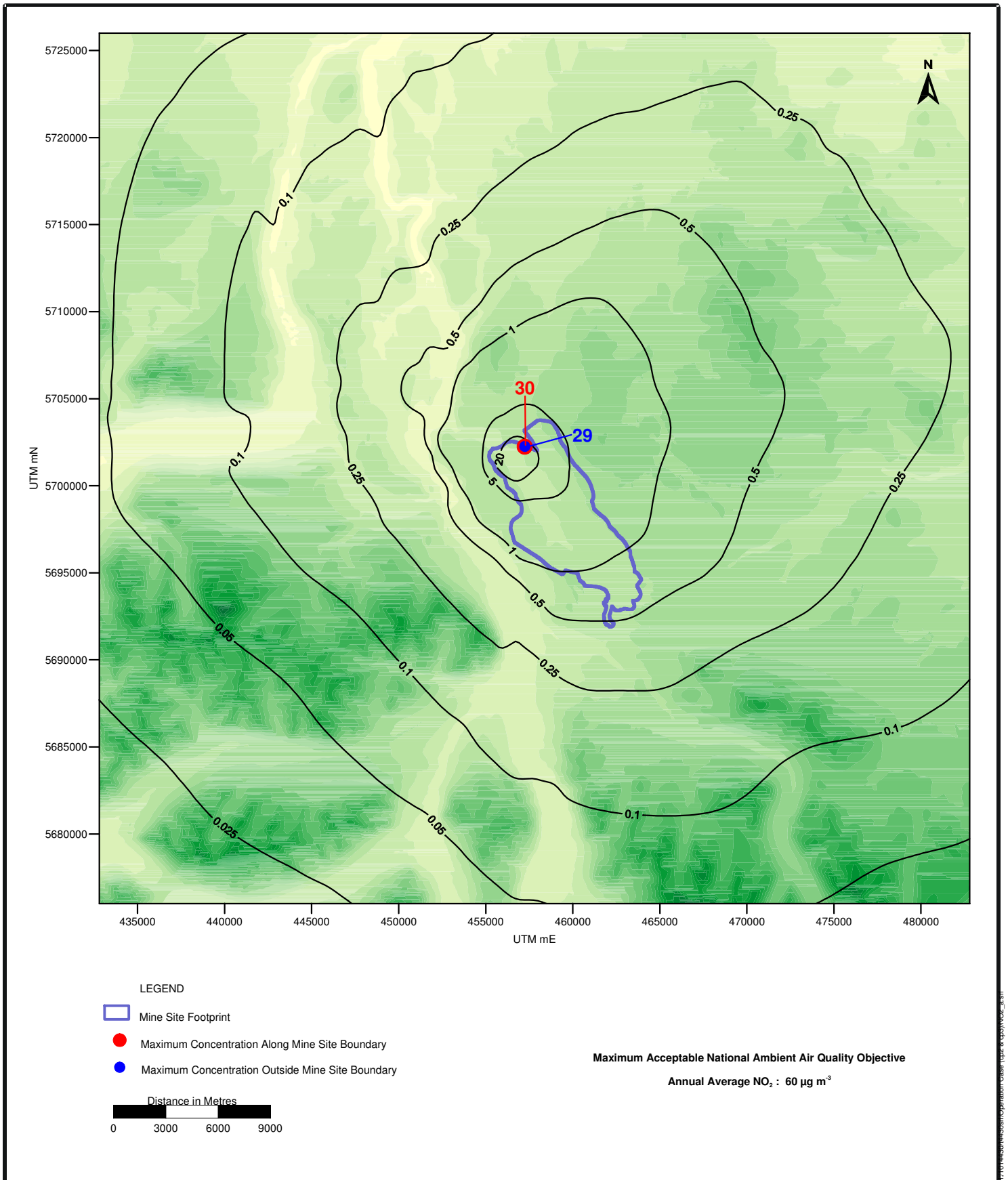
FIGURE NO.
B-24

PROSPERITY GOLD-COPPER PROJECT

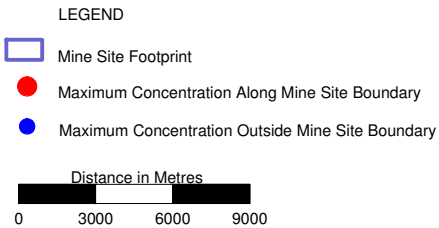
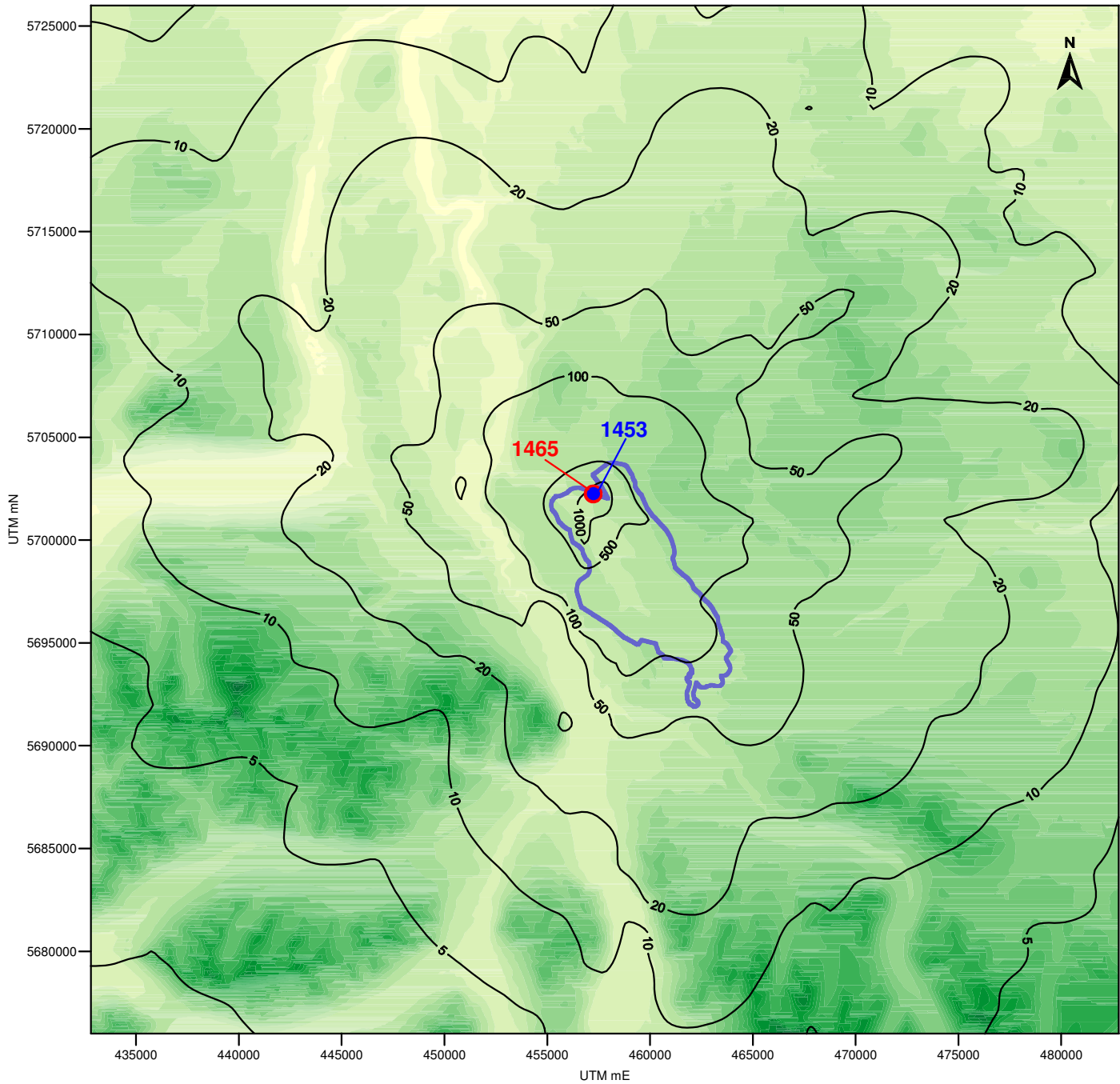
**Predicted 24-Hour Average Ground-level NO₂ Concentrations (µg m⁻³)
 Associated with the Operations Phase**

DRAFT DATE	02/11/07
REVISION DATE	13/11/07
PREPARED FOR	

H:\PROSPERITY\Operations\Map\Map_24_Hour_NO2_07.mxd



	PROSPERITY GOLD-COPPER PROJECT	DRAFT DATE 02/11/07
		REVISION DATE 13/11/07
FIGURE NO. B-25	Predicted Annual Average Ground-level NO₂ Concentrations (µg m⁻³) Associated with the Operations Phase	PREPARED FOR



British Columbia Level A Air Quality Objective
 One-Hour Average CO: 14,300 $\mu\text{g m}^{-3}$



PROSPERITY GOLD-COPPER PROJECT

DRAFT DATE
02/11/07

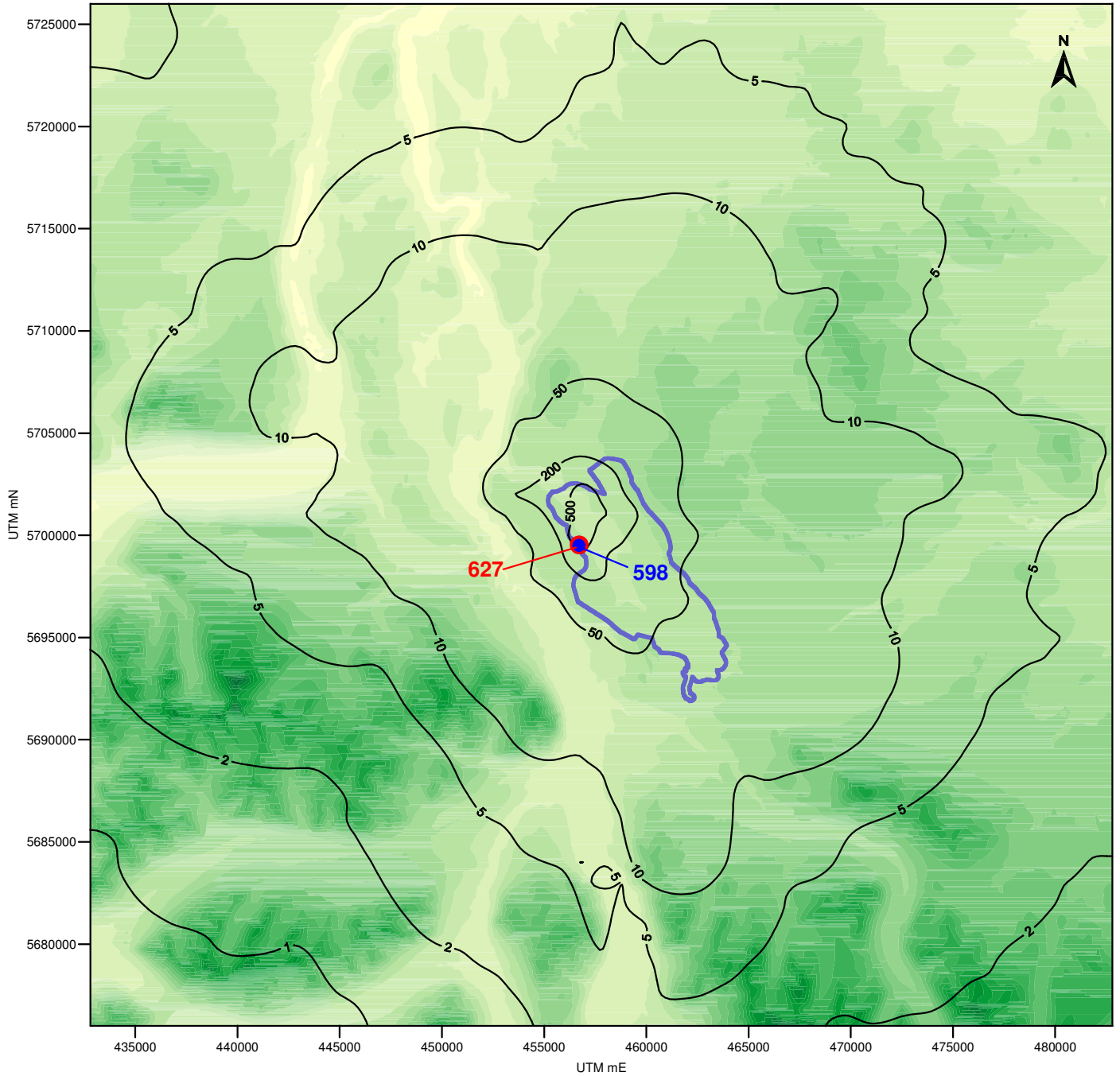
REVISION DATE
13/11/07

FIGURE NO.
B-26

**Predicted One-Hour Average Ground-level CO Concentrations ($\mu\text{g m}^{-3}$)
 Associated with the Operations Phase**

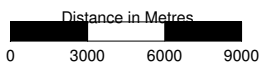
PREPARED FOR
 Taseko Mines Limited

H:\PROSPERITY\GIS\Map_Series\Map_Series_14_07_07.mxd



- LEGEND
- Mine Site Footprint
 - Maximum Concentration Along Mine Site Boundary
 - Maximum Concentration Outside Mine Site Boundary

British Columbia Level A Air Quality Objective
 Eight-Hour Average CO: 5,500 $\mu\text{g m}^{-3}$



Jacques Whitford
 AXYS

FIGURE NO.
B-27

PROSPERITY GOLD-COPPER PROJECT

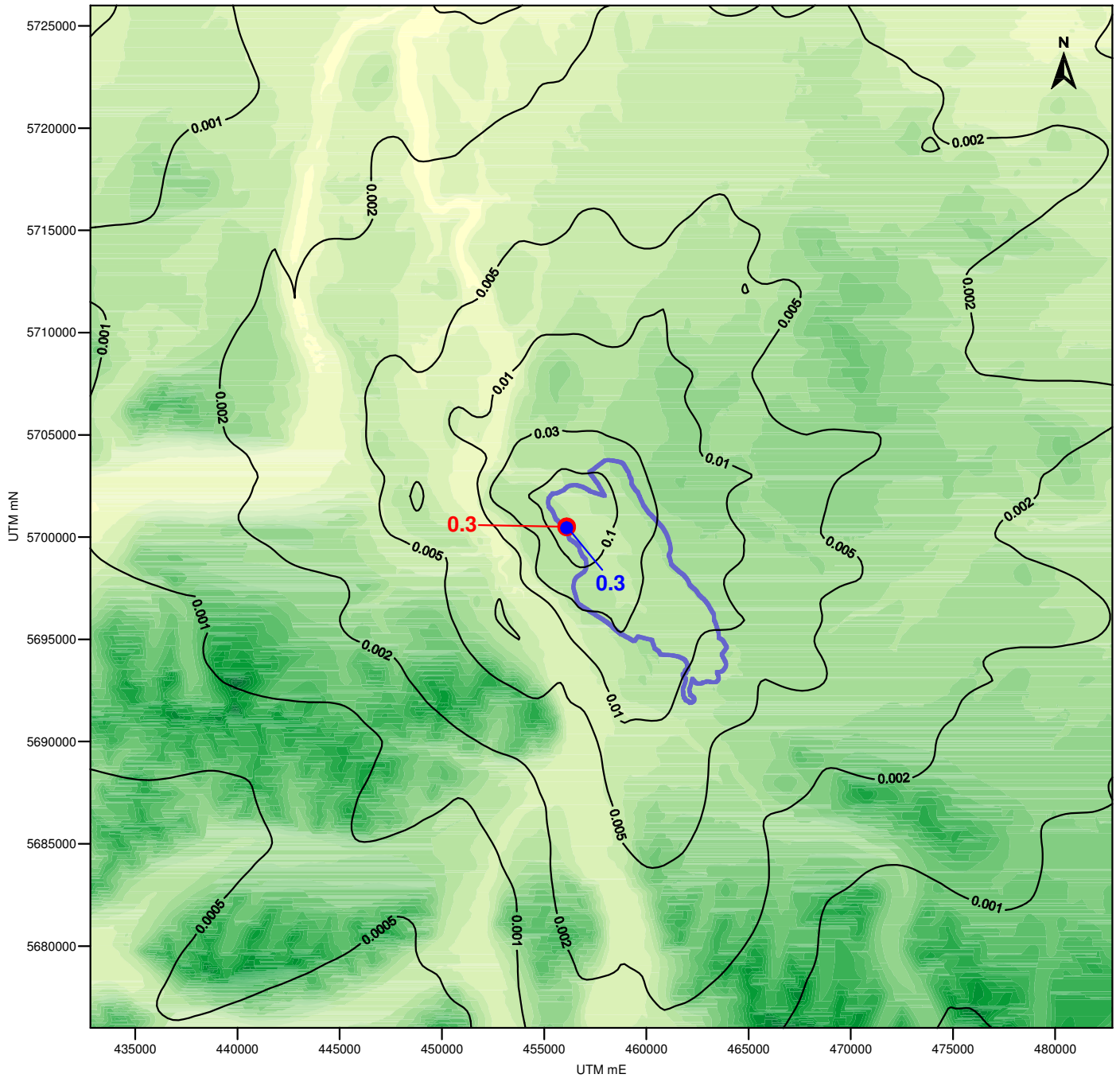
**Predicted Eight-Hour Average Ground-level CO Concentrations ($\mu\text{g m}^{-3}$)
 Associated with the Operations Phase**

DRAFT DATE
02/11/07

REVISION DATE
13/11/07

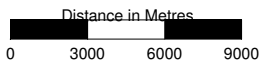
PREPARED FOR
 Taseko Mines Limited

H:\PROSPERITY\Operations\Map\Map_8_4_07\CO_07.dwg



- LEGEND
- Mine Site Footprint
 - Maximum Concentration Along Mine Site Boundary
 - Maximum Concentration Outside Mine Site Boundary

British Columbia Level A Air Quality Objective
24-Hour Average SO₂: 160 µg m⁻³



Jacques Whitford
 AXYS

FIGURE NO.
B-29

PROSPERITY GOLD-COPPER PROJECT

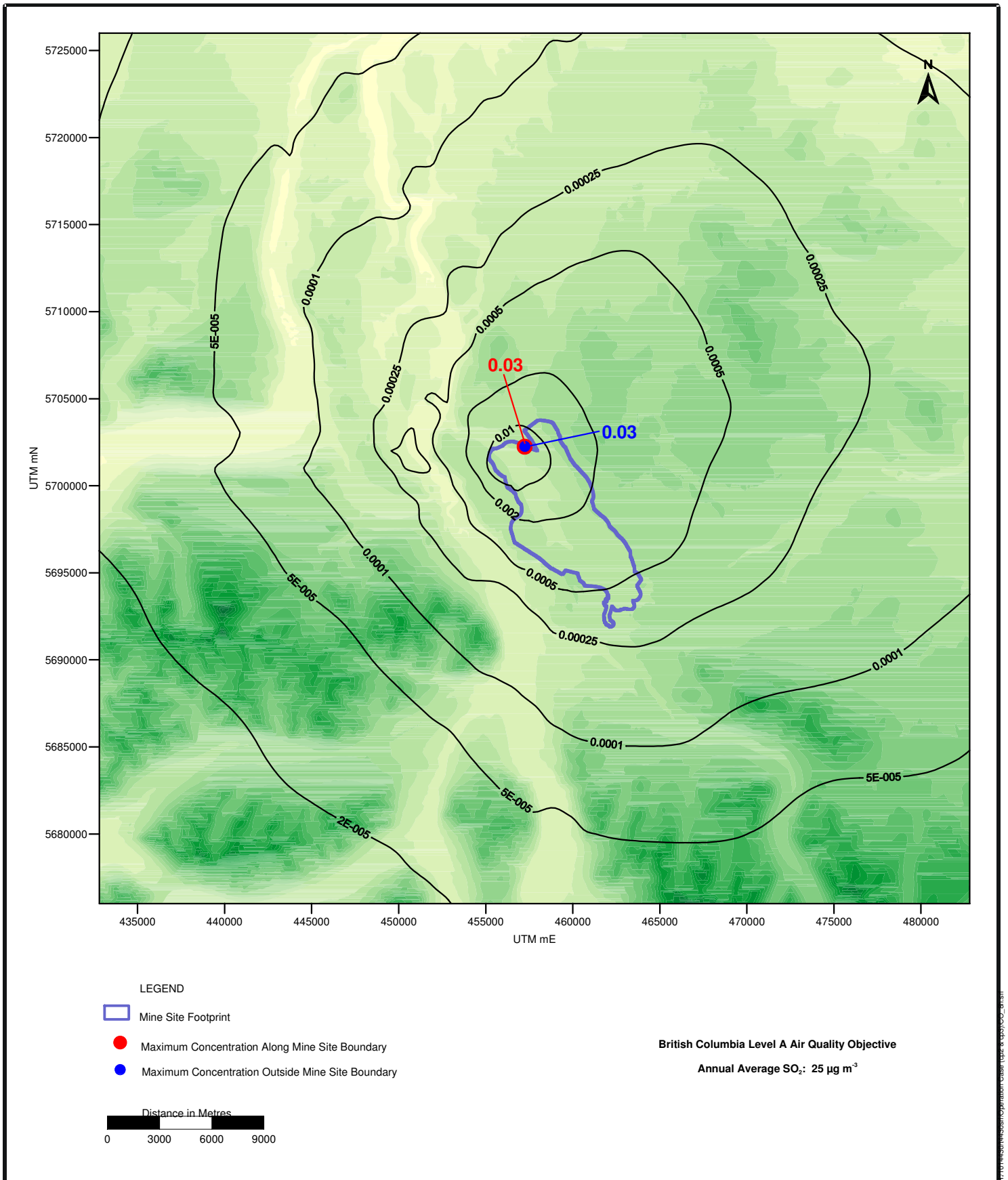
**Predicted 24-Hour Average Ground-level SO₂ Concentrations (µg m⁻³)
 Associated with the Operations Phase**

DRAFT DATE
 14/11/07

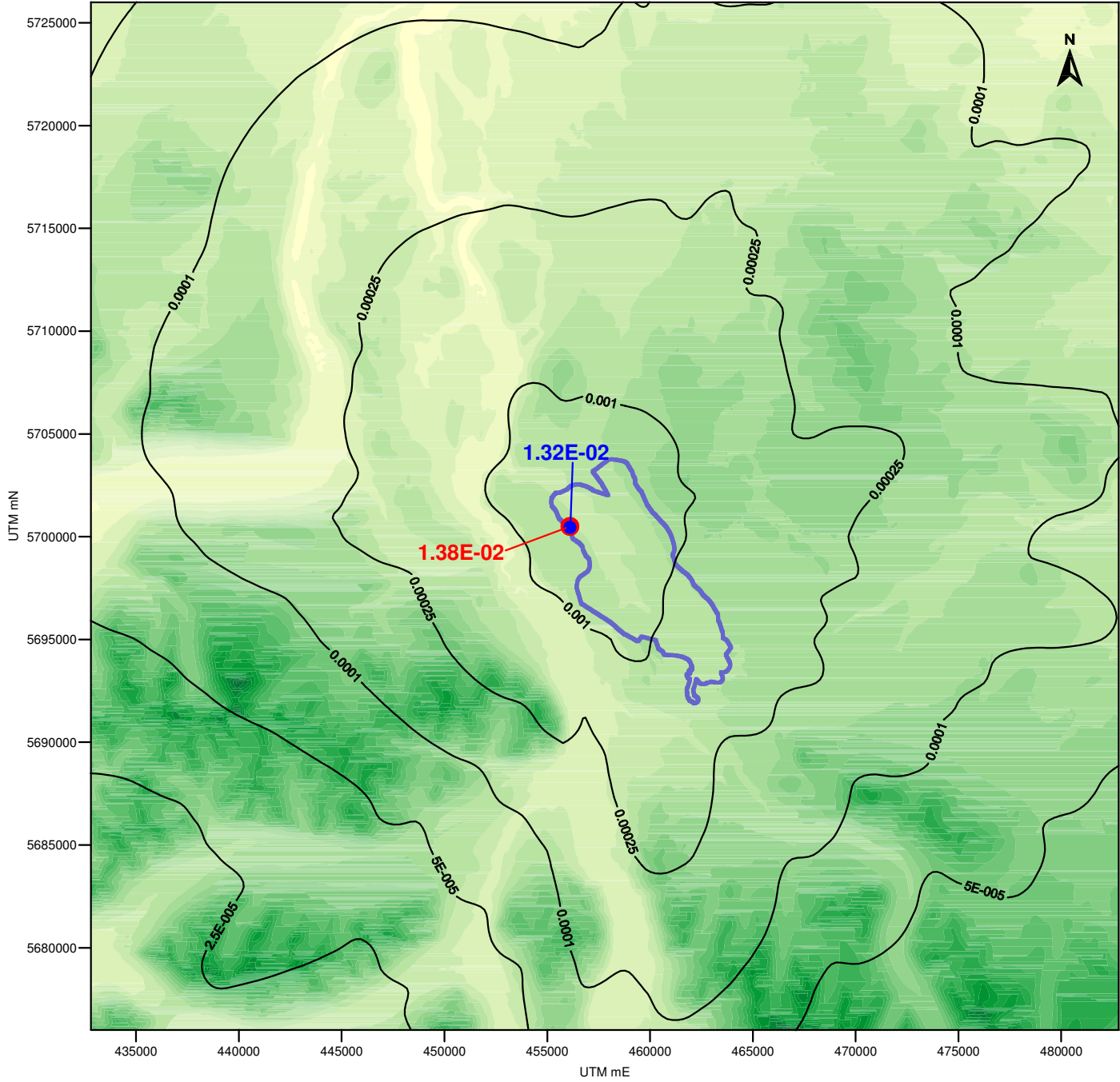
REVISION DATE
 16/11/07

PREPARED FOR
Taseko Mines Limited

H:\Projects\Prosperity\Operations\Map\fig_b-29\fig_b-29.doc



	PROSPERITY GOLD-COPPER PROJECT	DRAFT DATE 14/11/07
		REVISION DATE 14/11/07
FIGURE NO. B-30	Predicted Annual Average Ground-level SO₂ Concentrations (µg m⁻³) Associated with the Operations Phase	PREPARED FOR



LEGEND

- Mine Site Footprint
- Maximum Concentration Along Mine Site Boundary
- Maximum Concentration Outside Mine Site Boundary

Distance in Metres

British Columbia Level A Air Quality Objective
 24-Hour Average Lead: $4 \mu\text{g m}^{-3}$



PROSPERITY GOLD-COPPER PROJECT

DRAFT DATE
02/11/07

REVISION DATE
21/11/07

FIGURE NO.
B-31

**Predicted 24-Hour Average Ground-level Lead Concentration ($\mu\text{g m}^{-3}$)
 Associated with the Operations Phase**

PREPARED FOR

H:\Projects\Prosperity\Operations\Lead\figsize_4x6\figsize_4x6.dwg

