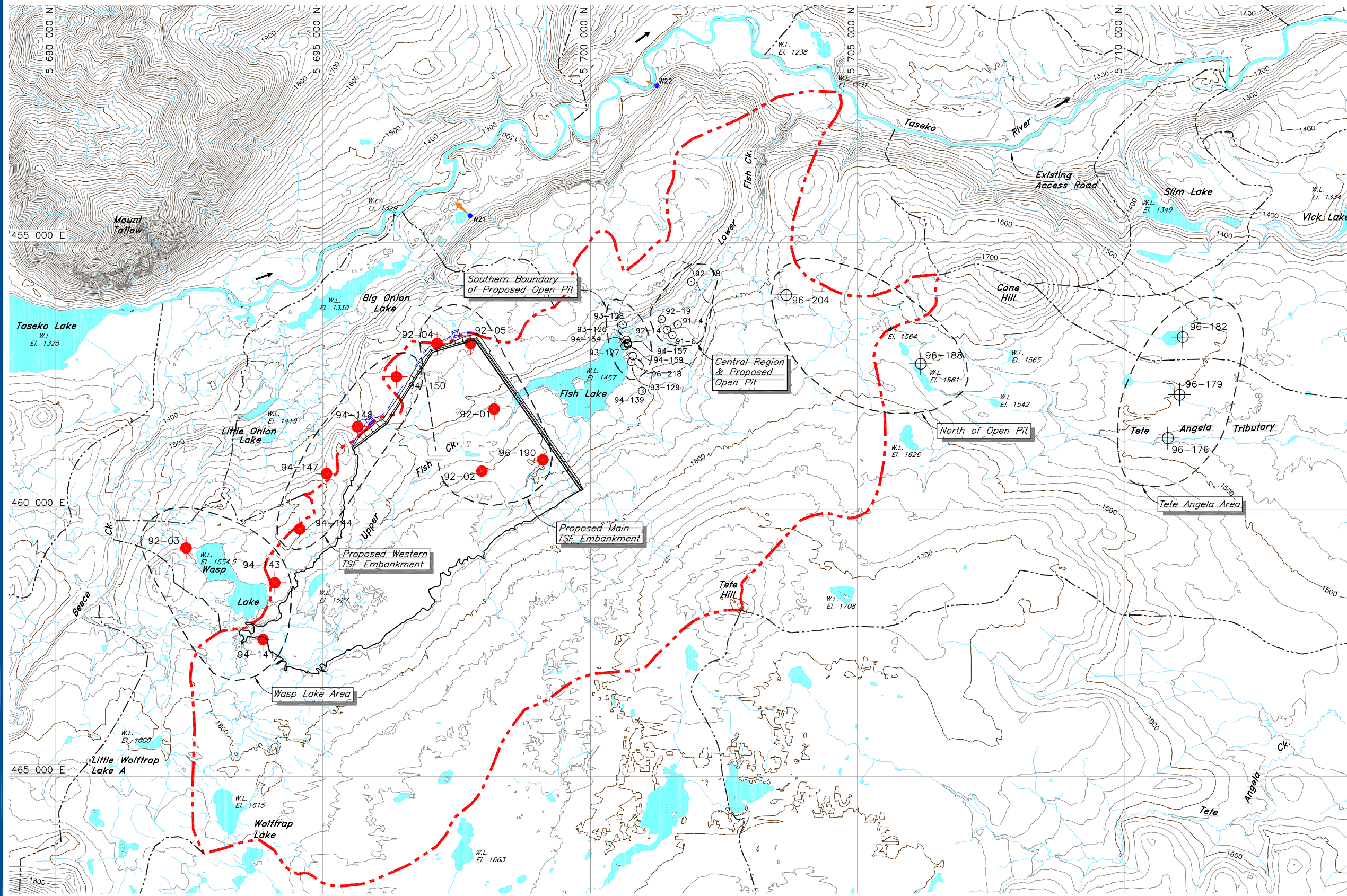
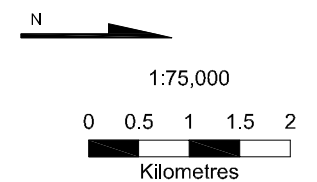


**Figure 4-55**  
**Regional Hydrology/Hydrogeology**  
**Investigation Plan**



**LEGEND**

- 96-186 Site 5 small diameter wells sampled with waterra tubing
- 93-127 Open pit wells
- 94-150 Site 2 wells sampled with grundfos pump
- Main Fish Creek Valley Catchment Boundary
- Peripheral Catchment Boundary
- Access Roads



**Knight Piésold**  
 CONSULTING

Map Prepared By  
 Knight Piesold Consulting

Produced by: WAL  
 Verified by: GLS  
 May 7, 2008  
 Revision A