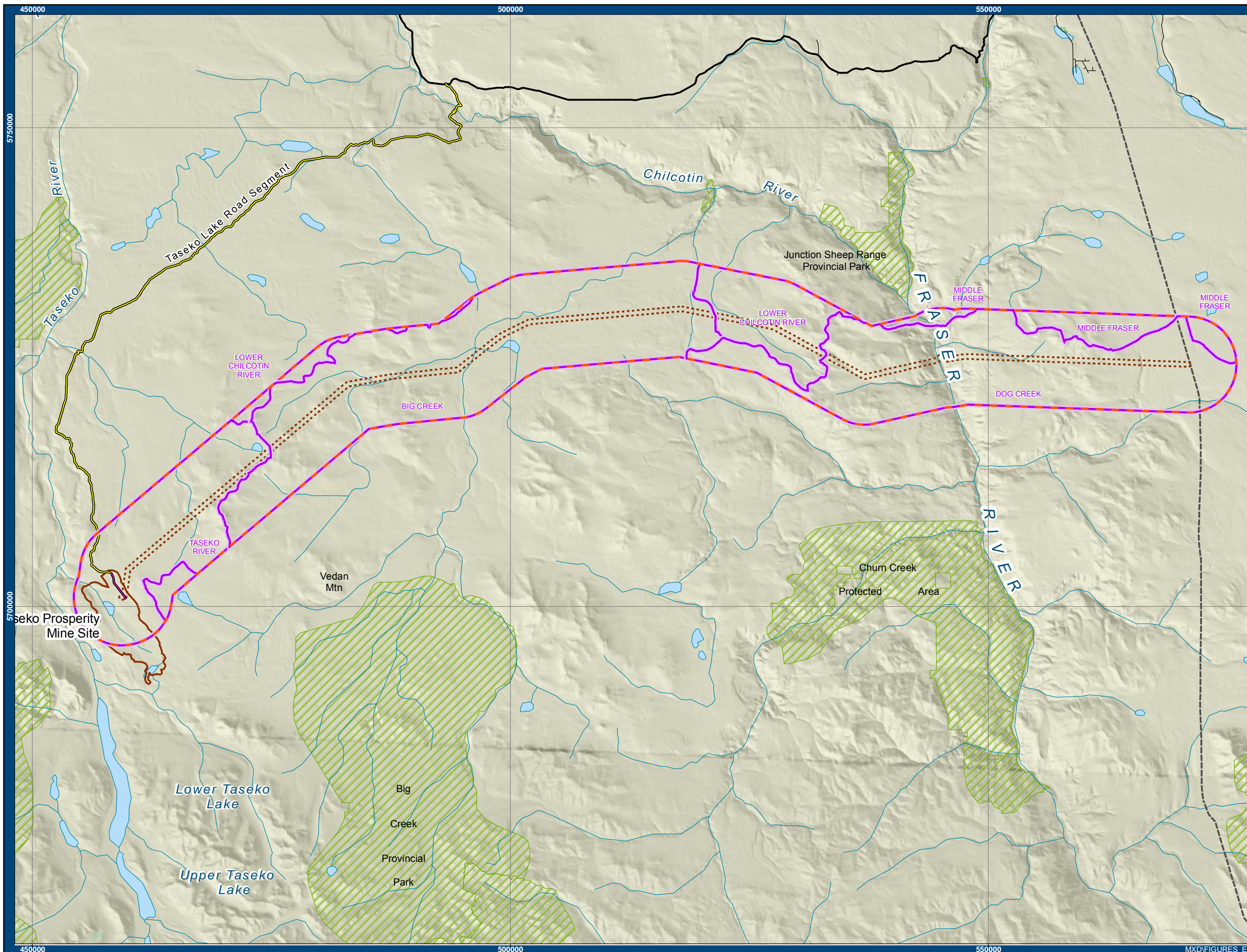


# **Taseko Prosperity Gold-Copper Project**

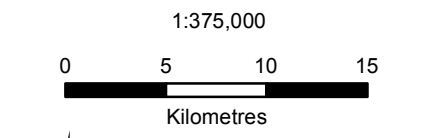
## **Appendix 5-6-N**



Appendix I  
 Linear Feature Density  
 Analysis Units for Mule Deer,  
 Moose, and Black Bear  
 Regional Study Area

**LEGEND**

- Existing Access Road
- Proposed Prosperity Mine Access Road
- Maximum Disturbance Area
- Proposed Transmission Corridor (500m)
- Analysis Unit Boundary
- Mule Deer/Moose/Black Bear RSA
- Highway
- Road
- BC Hydro Transmission Line
- River (1:2mil)
- Icefield (1:2mil)
- Lake (1:2mil)
- Protected Area



Map Prepared by  
 Jacques Whitford AXYS Ltd.

Data Sources:  
 Province of British Columbia, Taseko Mines Ltd.  
 Projection: UTM Zone 10, NAD 83

Produced by: Sarah Forbes  
 Verified by: Tony Dinneen  
 Date: July 31, 2008  
 Rev #: 02