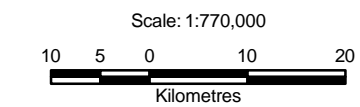


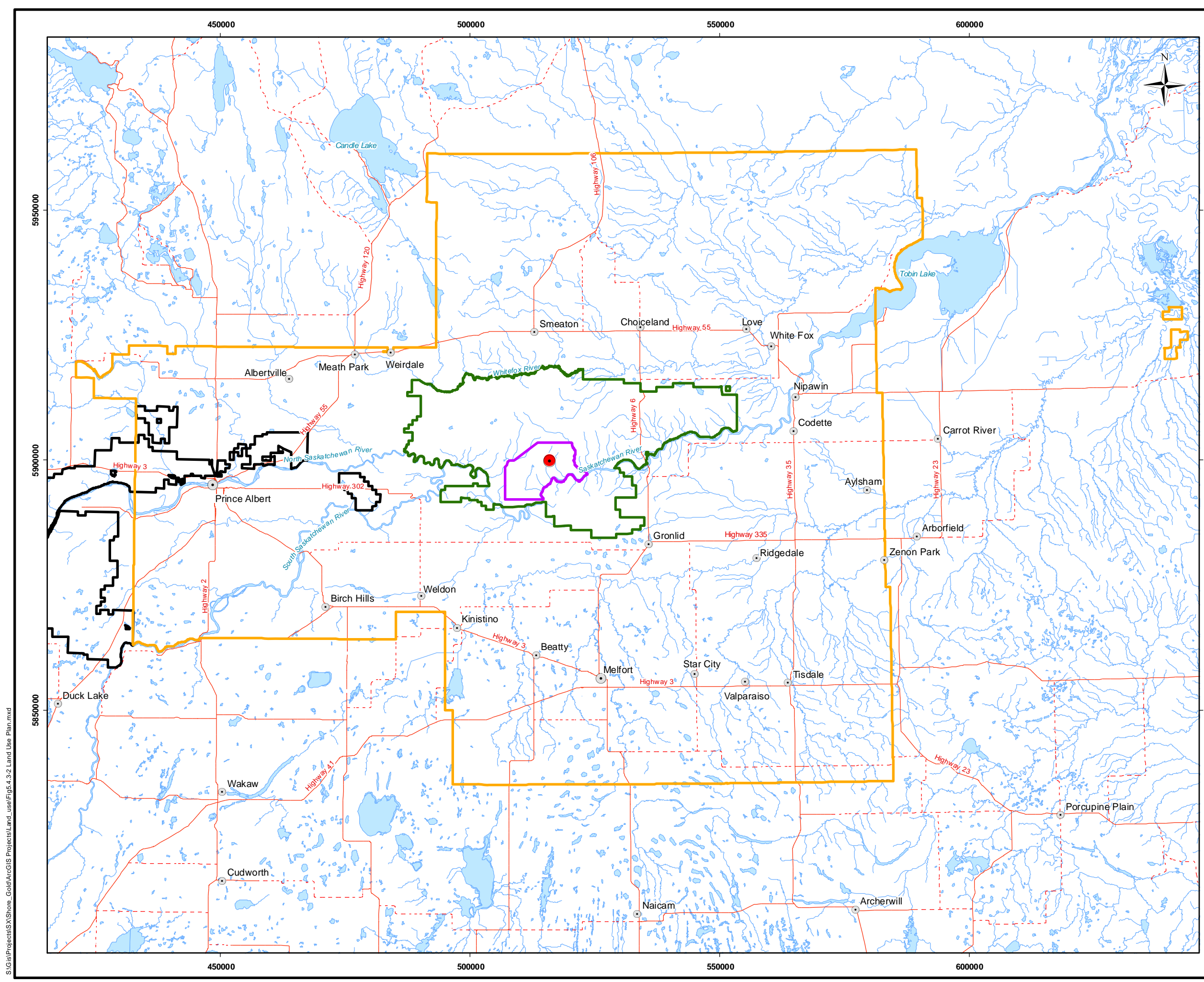
- Legend**
- Project Location
 - Town
 - City
 - Paved Highway
 - - - Unpaved Highway
 - ~ Watercourse
 - Waterbody
 - Wetland
 - Rural Municipality
 - ▭ FALC/Fort a la Come Provincial Forest
 - ▭ Local Study Area
 - ▭ Regional Study Area
 - ▭ First Nation Reserve



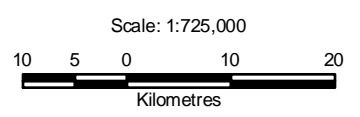
Reference
 Base data: NRCan National Road Network;
 NTS 1:250,000 scale: GeoSask
 LSA: Local Study Area; FALC: Fort a la Come Provincial Forest
 DRAFT (v6) Fort a la Come Provincial Forest Draft
 Integrated Forest Land Use Plan (October 20, 2005)
 Mine facilities: Amec, dated 19 February 2009

CLIENT: 		
PROJECT: Star - Orion South Diamond Project		
<p style="text-align: center;">Non Traditional Land and Resource Use Local and Regional Study Area Boundaries</p>		
DATE: December 08, 2010	ANALYST: NH	Figure 5.4.3-1
JOB No: SX0373301	QA/QC: MY	PDF FILE: Fig5.4.3-1 Study Areas 10-12-08.pdf
GIS FILE: Fig5.4.3-1 Study Areas.mxd		
PROJECTION: UTM Zone 13	DATUM: NAD27	

S:\GIS\Projects\SV\Shore_Gold\ArcGIS\Projects\Land_use\Fig.4.3-1 Study Areas.mxd



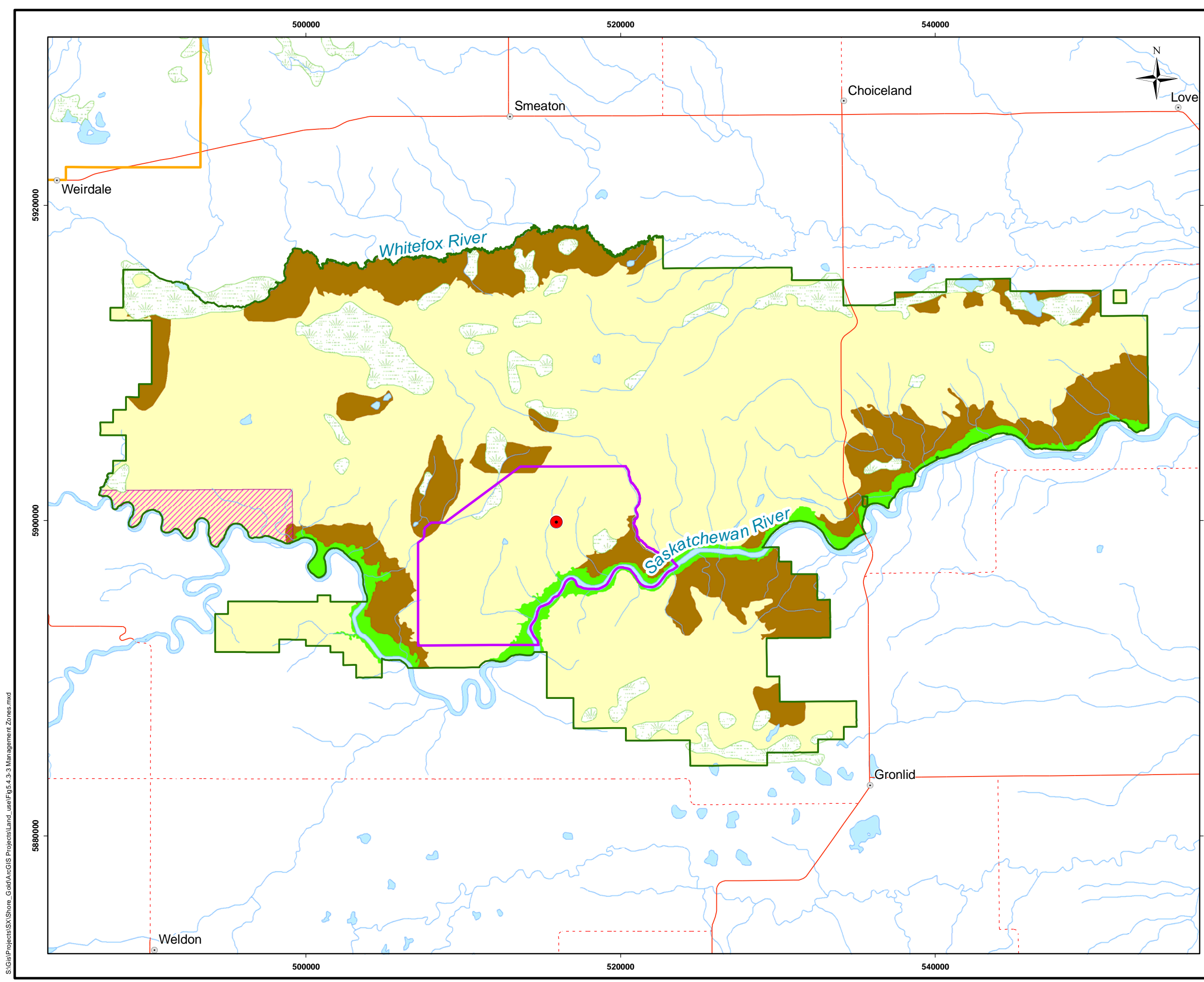
- Legend**
- Project Location
 - Town
 - City
 - Paved Highway
 - - - Unpaved Highway
 - Watercourse
 - Waterbody
 - ▭ FALC / Fort a la Corne Provincial Forest Draft Integrated Forest Land Use Plan
 - ▭ Local Study Area
 - ▭ Regional Study Area
 - ▭ Nisbet Integrated Forest Land Use Plan



Reference
 Base data: NRCan National Road Network;
 NTS 1:250,000 scale: GeoSask
 LSA: Local Study Area; FALC: Fort a la Corne Provincial Forest
 DRAFT (v6) Fort a la Corne Provincial Forest Draft
 DRAFT (v4) Nisbet Integrated Forest Land
 Use Plan (March 28, 2008)
 Integrated Forest Land Use Plan (October 20, 2005)
 Mine facilities: Amec, dated 19 February 2009

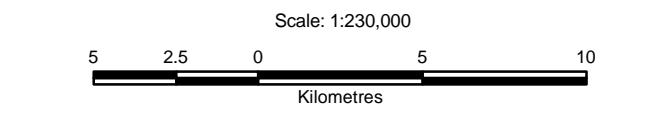
CLIENT: 		
PROJECT: Star - Orion South Diamond Project		
Land Use Plans and Policies		
DATE: December 2010	ANALYST: NH	Figure 5.4.3-2
JOB No: SX0373301	QA/QC: MY	PDF FILE: Fig5.4.3-2 Land Use Plan 10-12-08.pdf
GIS FILE: Fig5.4.3-2 Land Use Plan.mxd		
PROJECTION: UTM Zone 13	DATUM: NAD27	

S:\GIS\Projects\SA\Shore_Gold\ArcGIS\Projects\Land_Use\Fig5.4.3-2_Land_Use_Plan.mxd



Legend

- Project Location
- Town
- City
- Paved Highway
- - - Unpaved Highway
- ~ Watercourse
- Waterbody
- Wetland
- Representative Area Network
- FALC/Fort a la Corne Provincial Forest
- Local Study Area
- Regional Study Area
- Management Zone
- Sensitive Zone
- Protection Zone

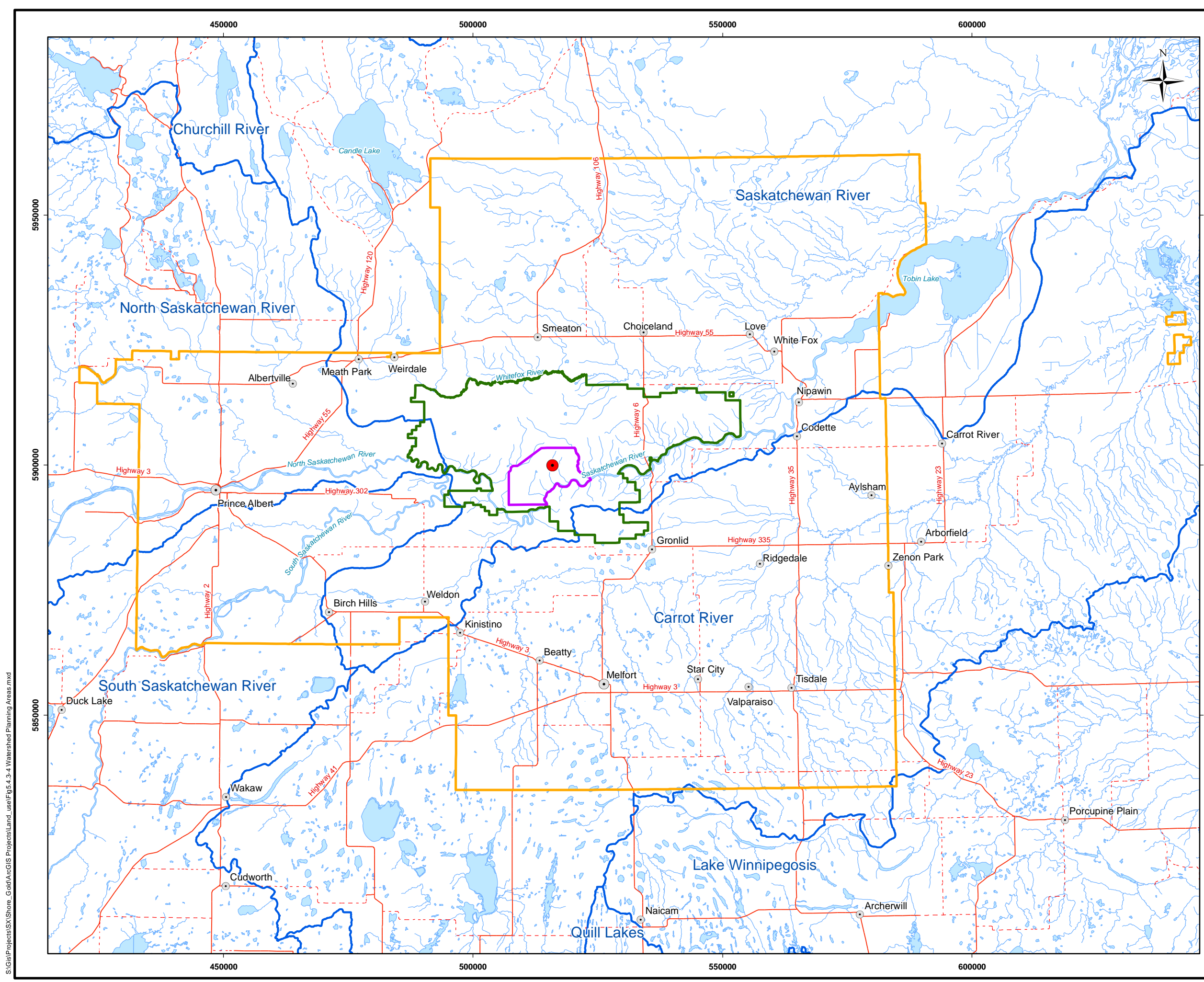


Reference

Base data: NRCan National Road Network;
 NTS 1:250,000 scale: GeoSask
 LSA: Local Study Area; FALC: Fort a la Corne Provincial Forest
 DRAFT (v6) Fort a la Corne Provincial Forest Draft
 Integrated Forest Land Use Plan (October 20, 2005)
 Mine facilities: Amec, dated 19 February 2009

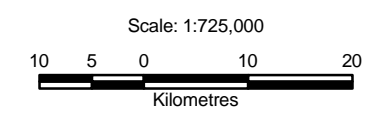
CLIENT: 		
PROJECT: Star - Orion South Diamond Project		
Fort a la Corne Provincial Forest Management Zones		
DATE: December, 2010	ANALYST: NH	Figure 5.4.3-3
JOB No: SX0373301	QA/QC: MY	PDF FILE: Fig5.4.3-3 Management Zones 10-12-08.pdf
GIS FILE: Fig5.4.3-3 Management Zones.mxd		
PROJECTION: UTM Zone 13	DATUM: NAD27	

S:\GIS\Projects\SX\Shore_Gold\ArcGIS\Projects\Land_use\Fig5.4.3-3 Management Zones.mxd



Legend

- Project Location
- Town
- City
- Paved Highway
- Unpaved Highway
- Watercourse
- Watershed
- Waterbody
- FALC / Fort a la Come Provincial Forest
- Regional Study Area
- Local Study Area

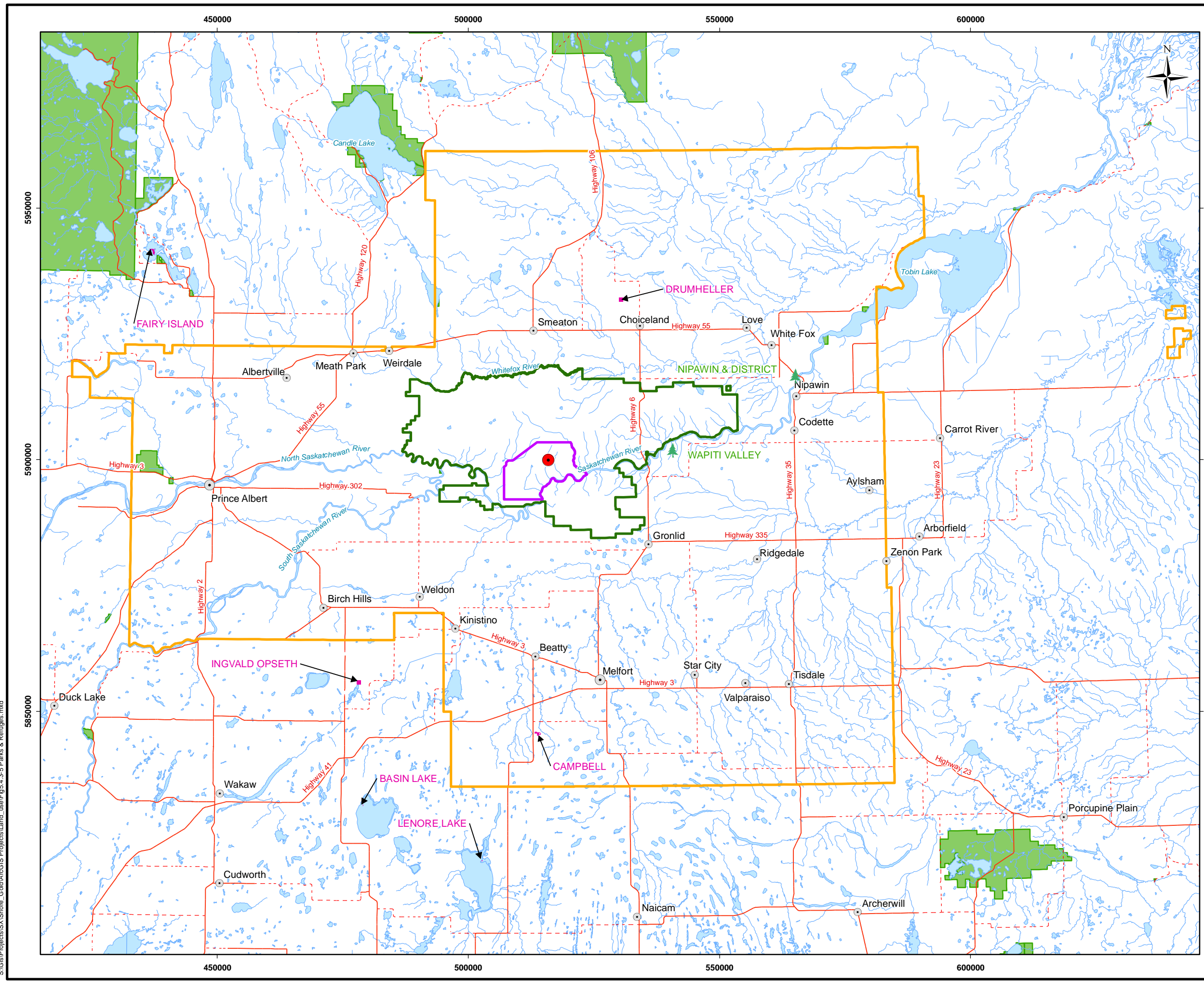


Reference

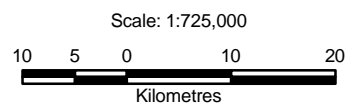
Base data: NRCan National Road Network;
 NTS 1:250,000 scale: GeoSask
 LSA: Local Study Area; FALC: Fort a la Come Provincial Forest
 DRAFT (v6) Fort a la Come Provincial Forest Draft
 Integrated Forest Land Use Plan (October 20, 2005)
 Mine facilities: Amec, dated 19 February 2009

CLIENT: 		
PROJECT: Star - Orion South Diamond Project		
Watershed Planning Areas		
DATE: December 2010	ANALYST: NH	Figure 5.4.3-4
JOB No: SX0373301	QA/QC: MY	PDF FILE: Fig5.4.3-4 Watershed Planning Areas 10-12-14.pdf
GIS FILE: Fig5.4.3-4 Watershed Planning Areas.mxd		
PROJECTION: UTM Zone 13	DATUM: NAD27	

S:\GIS\Projects\SV\Shore_Gold\ArcGIS\Projects\Land_use\Fig5.4.3-4 Watershed Planning Areas.mxd



- Legend**
- Project Location
 - Town
 - City
 - 🌲 Regional Park
 - Paved Highway
 - - - Unpaved Highway
 - ~ Watercourse
 - 🌊 Waterbody
 - 🟩 FALC/Fort a La Come Provincial Forest
 - 🟪 Local Study Area
 - 🟨 Regional Study Area
 - 🟪 Wildlife Refuge
 - 🟩 Provincial Park & Protected Area

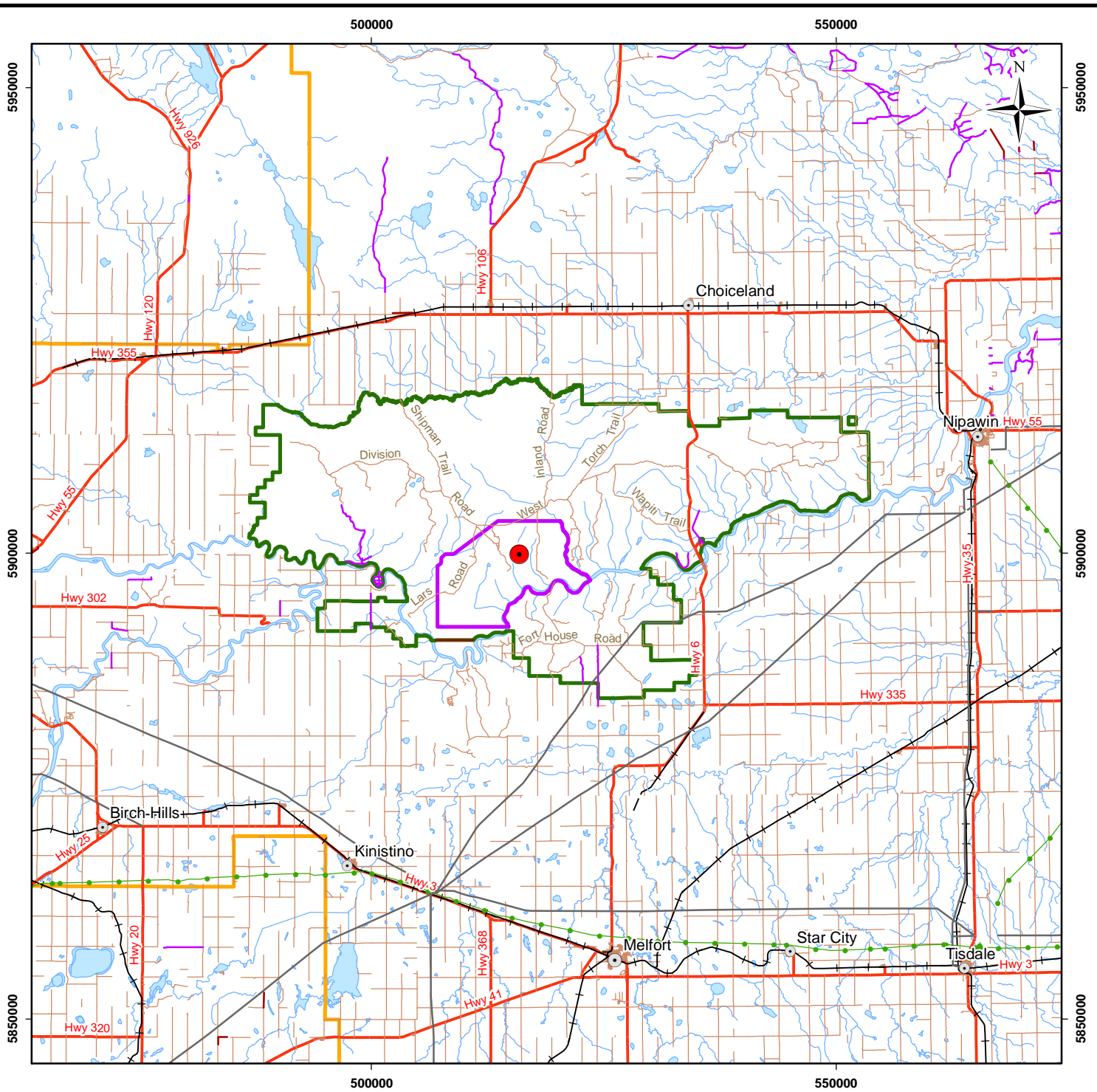


Reference

Base data: NRCan National Road Network;
 NTS 1:250,000 scale: GeoSask
 Wildlife Refuge: Environment Saskatchewan,
 20041103, Wildlife Refuge
 LSA: Local Study Area; FALC: Fort a la Come Provincial Forest
 DRAFT (v6) Fort a la Come Provincial Forest Draft
 Integrated Forest Land Use Plan (October 20, 2005)
 Mine facilities: Amec, dated 19 February 2009

CLIENT: 		
PROJECT: Star - Orion South Diamond Project		
Regional Parks and Wildlife Refuges		
DATE: August 13, 2010	ANALYST: NH	Figure 5.4.3-5
JOB No: SX0373301	QA/QC: MY	PDF FILE: Fig5.4.3-5 Parks & Refuges 10-12-14.pdf
GIS FILE: Fig5.4.3-5 Parks & Refuges.mxd		
PROJECTION: UTM Zone 13	DATUM: NAD27	

S:\GIS\Projects\SV\Shore_Gold\ArcGIS\Projects\Land_use\Fig.5.4.3-5 Parks & Refuges.mxd

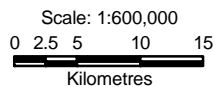


Legend

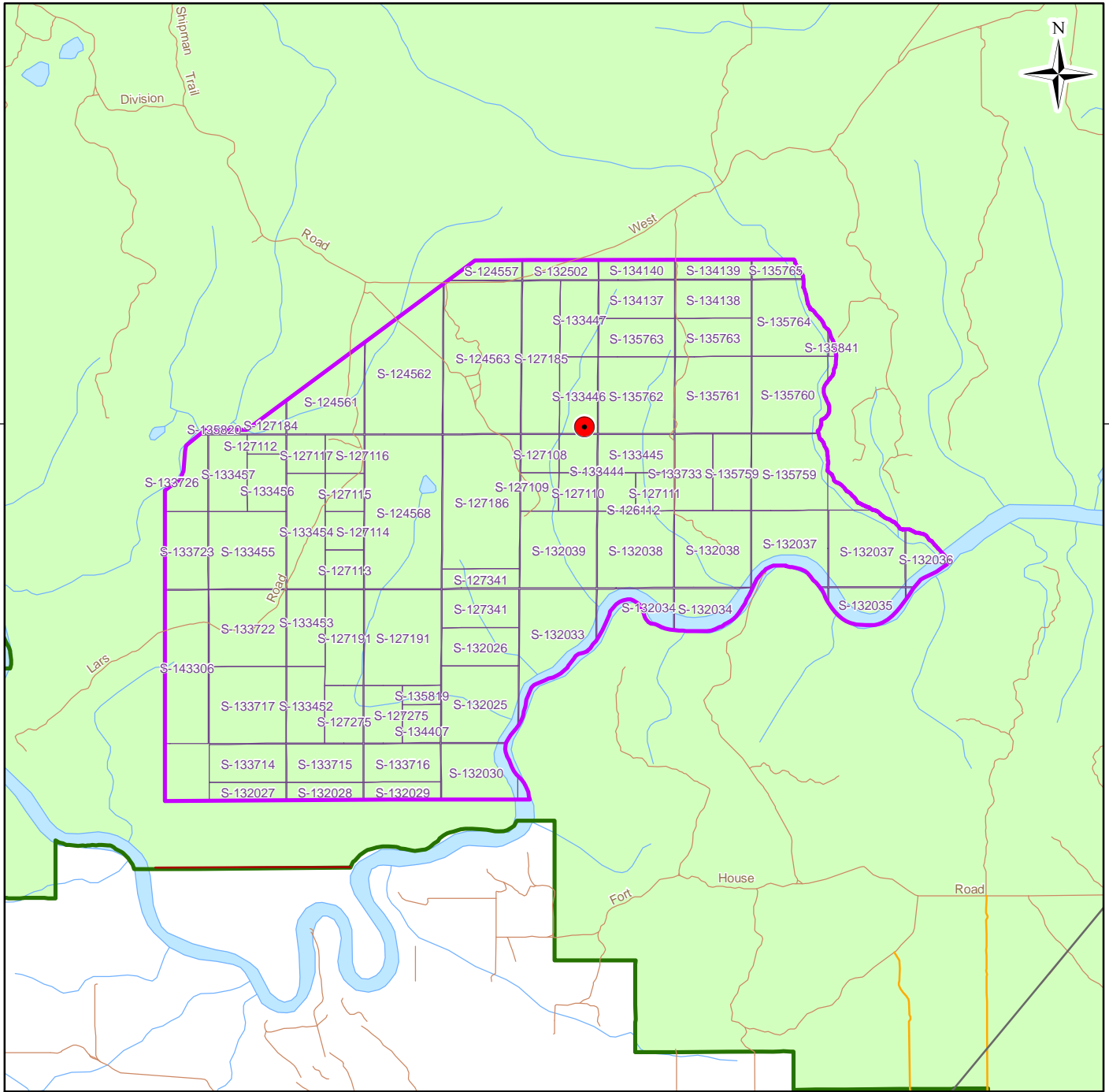
- Road
- Trail
- Cutline
- Transmission Line
- Pipeline
- Highway
- Project Location
- FALC/fort a la Corne Provincial Forest
- Local Study Area
- Regional Study Area

Reference

Base data: NRCan National Road Network;
 NTS 1:250,000 scale: GeoSask
 Indian Reserve/ Municipality Boundaries: GeoSask
 Mine facilities: Amec, dated 19 February 2009



CLIENT: 		
PROJECT: Star - Orion South Diamond Project		
Linear Access to the Local Study Area		
DATE: December 2010	ANALYST: BH	Figure 5.4.3-6
JOB No: SX0373302	QA/QC: MY	
GIS FILE: Fig5.4.3-6 Linear Access.mxd		
PROJECTION: UTM Zone 13	DATUM: NAD27	

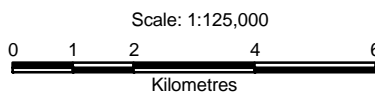


Legend

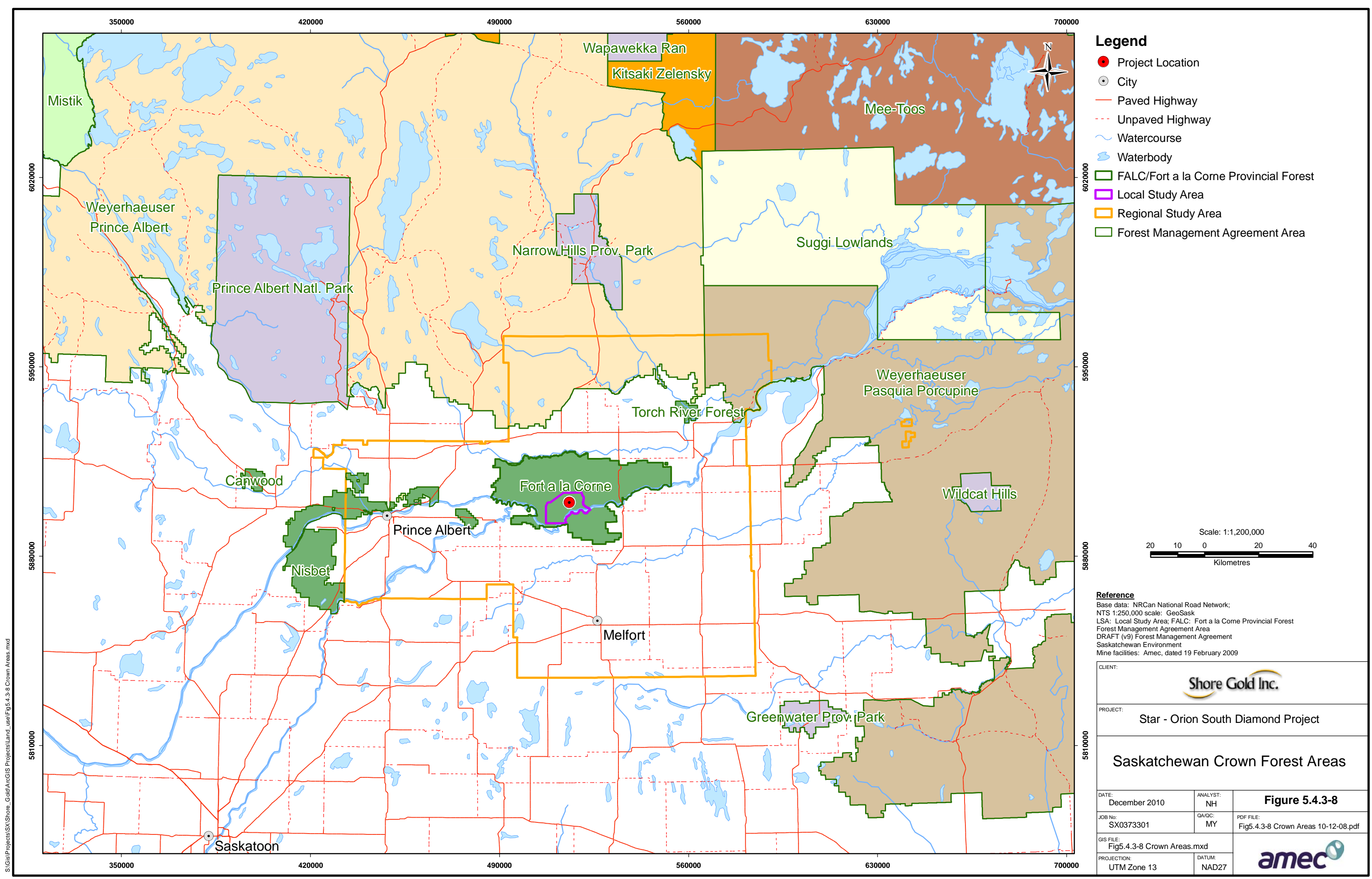
- Road
- Trail
- Cutline
- Transmission Line
- Pipeline
- Highway
- Project Location
- FALC/fort a la Corne Provincial Forest
- Local Study Area
- Mineral Disposition

Reference

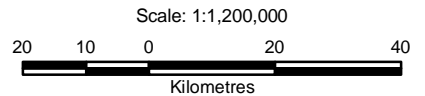
Base data: NRCan National Road Network;
 NTS 1:250,000 scale: GeoSask
 Indian Reserve/ Municipality Boundaries: GeoSask
 Mine facilities: Amec, dated 19 February 2009



CLIENT: 		
PROJECT: Star - Orion South Diamond Project		
Mineral Dispositions in the LSA		
DATE: December 2010	ANALYST: NH	Figure 5.4.3-7
JOB No: SX0373302	QA/QC: MY	
GIS FILE: Fig5.4.3-7 Mineral Dispositions LSA.mxd		TRACKING NO: Fig5.4.3-7 Mineral Dispositions LSA 10-12-08.pdf
PROJECTION: UTM Zone 13	DATUM: NAD27	



- Legend**
- Project Location
 - City
 - Paved Highway
 - - - Unpaved Highway
 - ~ Watercourse
 - Waterbody
 - Forest Management Agreement Area
 - Local Study Area
 - Regional Study Area

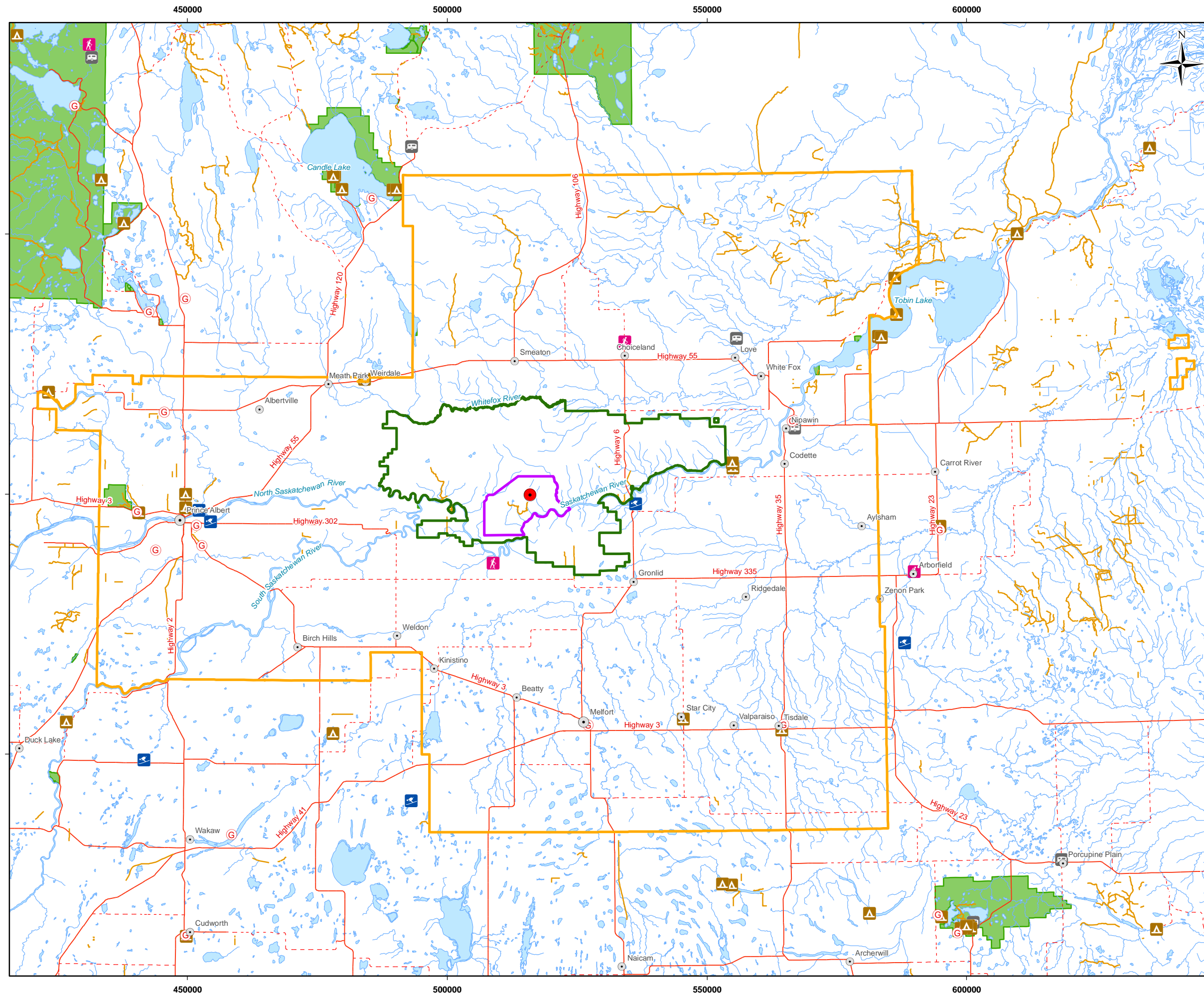


Reference
 Base data: NRCan National Road Network;
 NTS 1:250,000 scale: GeoSask
 LSA: Local Study Area; FALC: Fort a la Corne Provincial Forest
 Forest Management Agreement Area
 DRAFT (v9) Forest Management Agreement
 Saskatchewan Environment
 Mine facilities: Amec, dated 19 February 2009

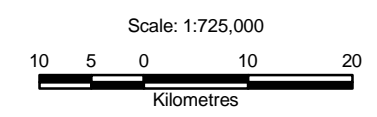
CLIENT: 		
PROJECT: Star - Orion South Diamond Project		
Saskatchewan Crown Forest Areas		
DATE: December 2010	ANALYST: NH	Figure 5.4.3-8
JOB No: SX0373301	QA/QC: MY	PDF FILE: Fig5.4.3-8 Crown Areas 10-12-08.pdf
GIS FILE: Fig5.4.3-8 Crown Areas.mxd		
PROJECTION: UTM Zone 13	DATUM: NAD27	

S:\GIS\Projects\SV\Shore_Gold\ArcGIS\Projects\Land_use\Fig.4.3-8 Crown Areas.mxd

S:\GIS\Projects\SV\Shore_Gold\ArcGIS\Projects\Land_use\Fig5.4.3-9 Outdoor Rec Areas.mxd



- ### Legend
- Project Location
 - G Golf (Course / Driving Range)
 - Town
 - City
 - Paved Highway
 - Unpaved Highway
 - Trail
 - Watercourse
 - Waterbody
 - ▲ Camp Ground
 - B Cottage
 - ▲ Outfitter
 - S Ski Center
 - FALC/Fort a la Come Provincial Forest
 - Local Study Area
 - Regional Study Area
 - Park or Protected Area



Reference
 Base data: NRCan National Road Network;
 NTS 1:250,000 scale: GeoSask
 LSA: Local Study Area; FALC: Fort a la Come Provincial Forest
 DRAFT (v6) Fort a la Come Provincial Forest Draft
 Integrated Forest Land Use Plan (October 20, 2005)
 Mine facilities: Amec, dated 19 February 2009

PROJECT: Star - Orion South Diamond Project		
Outdoor Recreation Locations		
DATE: December 2010	ANALYST: NH	Figure 5.4.3-9
JOB No: SX0373301	QA/QC: MY	PDF FILE: Fig5.4.3-9 Outdoor Rec Areas 10-12-08.pdf
GIS FILE: Fig5.4.3-9 Outdoor Rec Areas.mxd		
PROJECTION: UTM Zone 13	DATUM: NAD27	