



STAR-ORION SOUTH DIAMOND PROJECT  
ENVIRONMENTAL IMPACT STATEMENT

**APPENDIX 6.5-A**  
**Forest Fires**

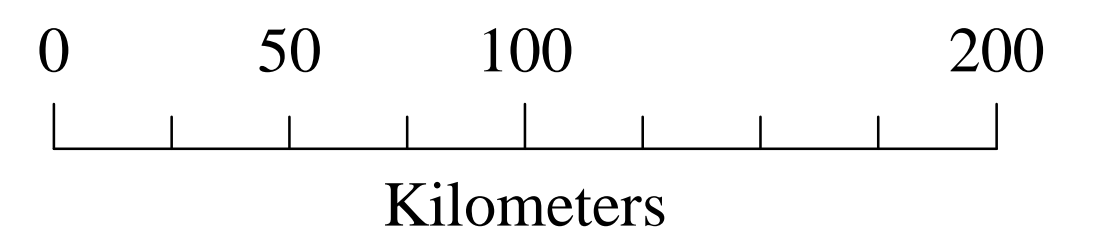


# Forest Fire History

## 1945 - 2009

Fire > 100 Ha

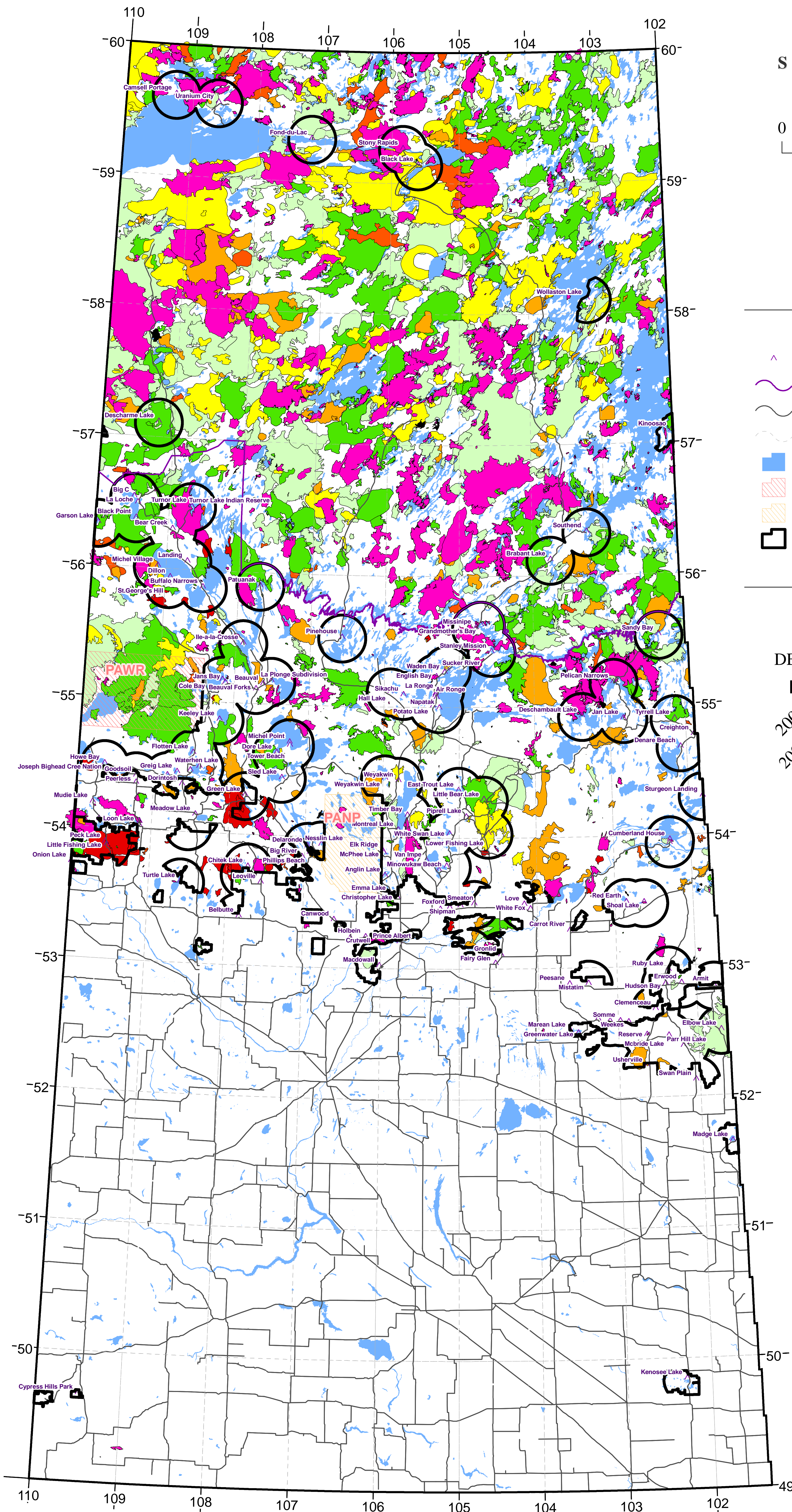
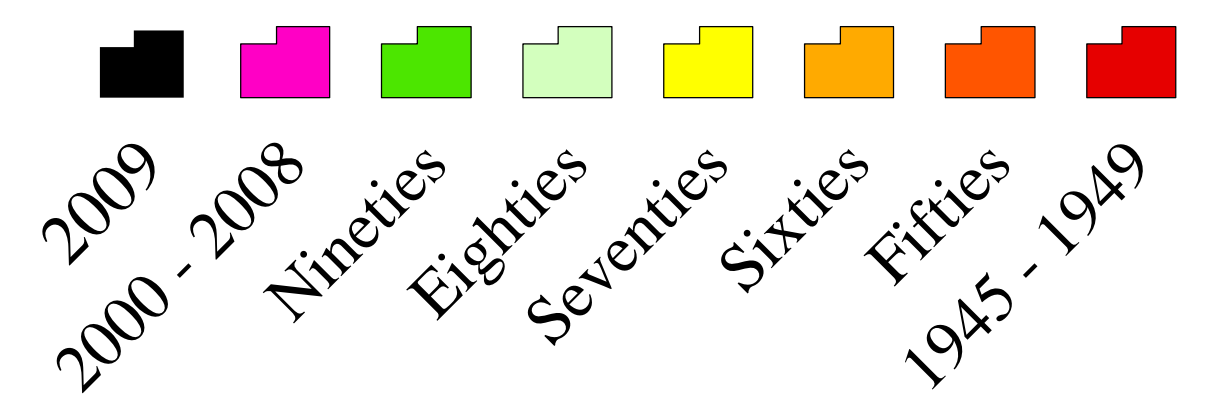
SASKATCHEWAN  
Canada



### Legend

- Communities
- Timber / Observation Zone
- Roads
- Geographic Graticule
- Waterbodies
- Primrose Air Weapons Range
- National Park
- Full Response Zone - Community Value

### DECADES



Copyright: Province of Saskatchewan  
Information on this map is provided as a public service by the Government of Saskatchewan. We cannot guarantee that all information is current and accurate. Users should verify the information before acting on it.

UTM Extended Zone 13, NAD83 CSRS98

Fire Management & Forest Protection  
Saskatchewan Ministry of Environment

Data Source:

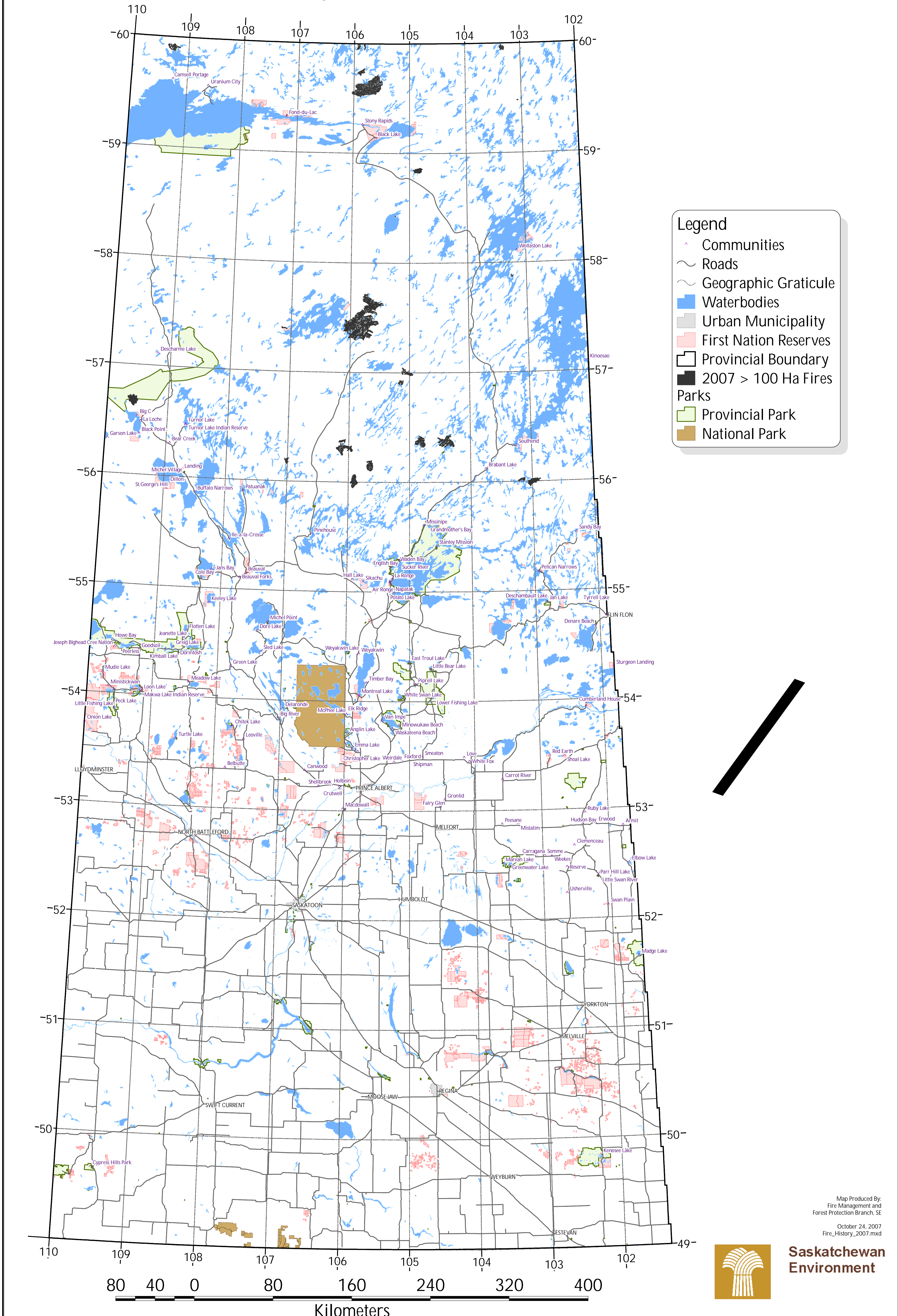
AWR - Agriculture and Food 2008  
Parks - ISC 2008  
Transportation - ISC / NRCAN 2004  
Waterbodies - ISC 2007  
Communities - ISC 2008

Forest Fire Chronology of Saskatchewan - FMFP 2009  
Timber / Observation Zone - FMFP 2008  
Full Response Community Zone - FMFP 2008

December 21, 2009  
Fire\_History\_1945-2009.mxd

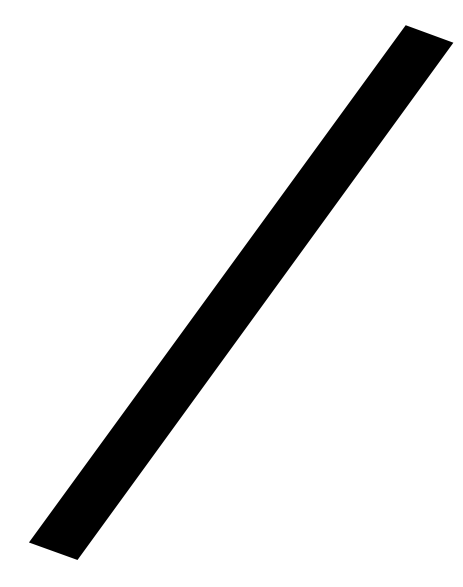


# Forest Fire History of Saskatchewan 2007 100 plus hectare fires



**Legend**

- Communities
- Roads
- Geographic Graticule
- Waterbodies
- Urban Municipality
- First Nation Reserves
- Provincial Boundary
- 2007 > 100 Ha Fires
- Parks
- Provincial Park
- National Park



Map Produced By:  
Fire Management and  
Forest Protection Branch, SE  
October 24, 2007  
Fire\_History\_2007.mxd

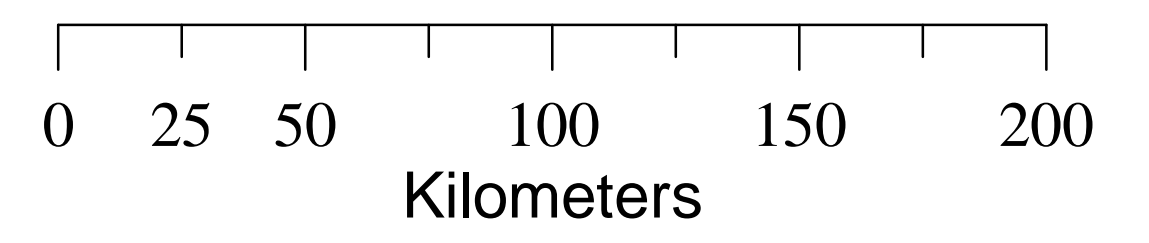


**Saskatchewan  
Environment**



# 2008 Forest Fire History

SASKATCHEWAN



## LEGEND

- Communities
- Fire Origins
- STATUS
- Active
- Out
- Highways
- Geographic Graticule
- Fires > 100 Ha
- Waterbodies
- Urban Municipality
- Provincial Park
- National Park
- First Nation Reserves

Copyright: Province of Saskatchewan

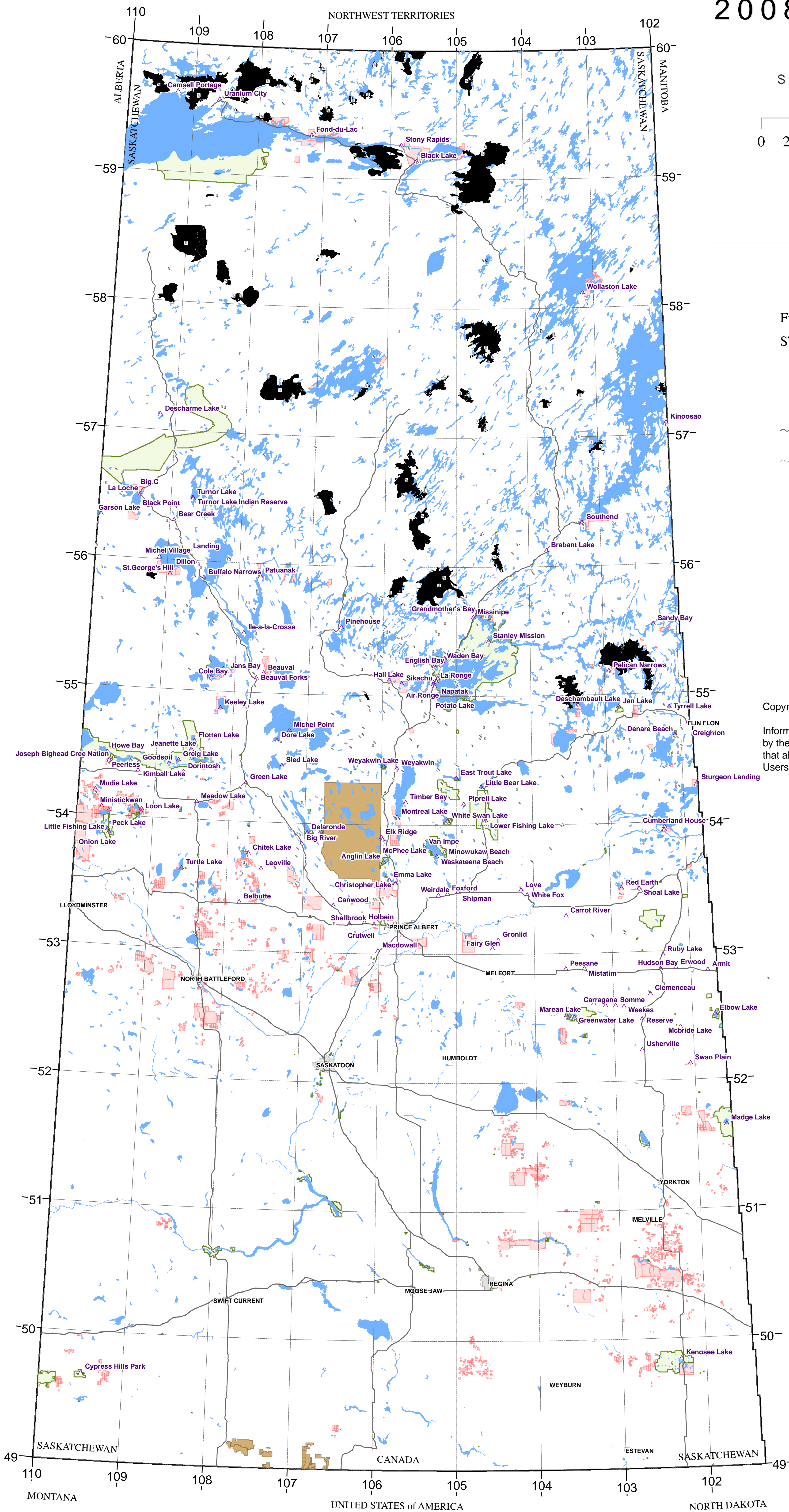
Information on this map is provided as a public service by the Government of Saskatchewan. We cannot guarantee that all information is current and accurate. Users should verify the information before acting on it.

UTM Extended Zone 13, NAD83 CSRS98

Fire Management &  
Forest Protection  
December 18 2008  
Fire\_History\_AIL\_2008.mxd



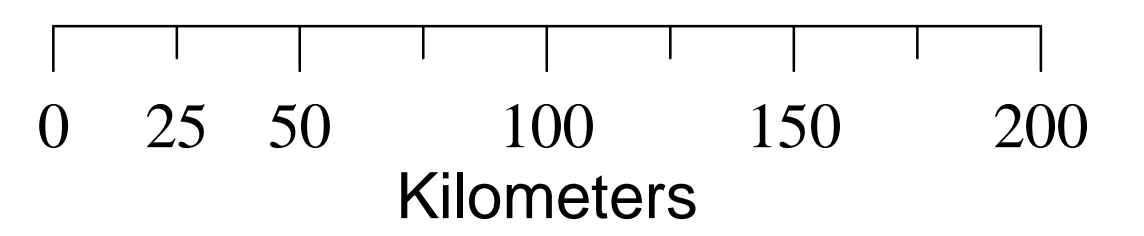
Total of 599 fire starts  
66 Total >= 100 ha





# 2009 Forest Fire History

SASKATCHEWAN

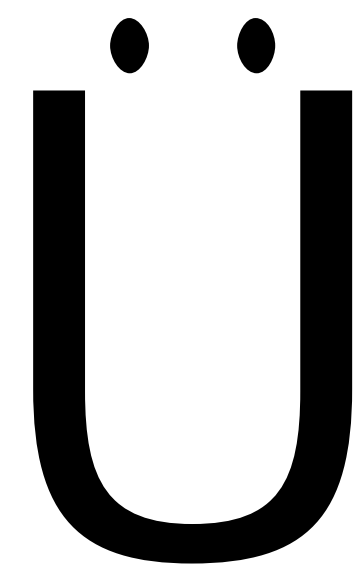


## LEGEND

- Highways
- Geographic Graticule
- Fires > 100 Ha Bdy
- Waterbodies
- Urban Municipality
- Provincial Park
- National Park
- First Nation Reserves

Copyright: Province of Saskatchewan

Information on this map is provided as a public service by the Government of Saskatchewan. We cannot guarantee that all information is current and accurate. Users should verify the information before acting on it.

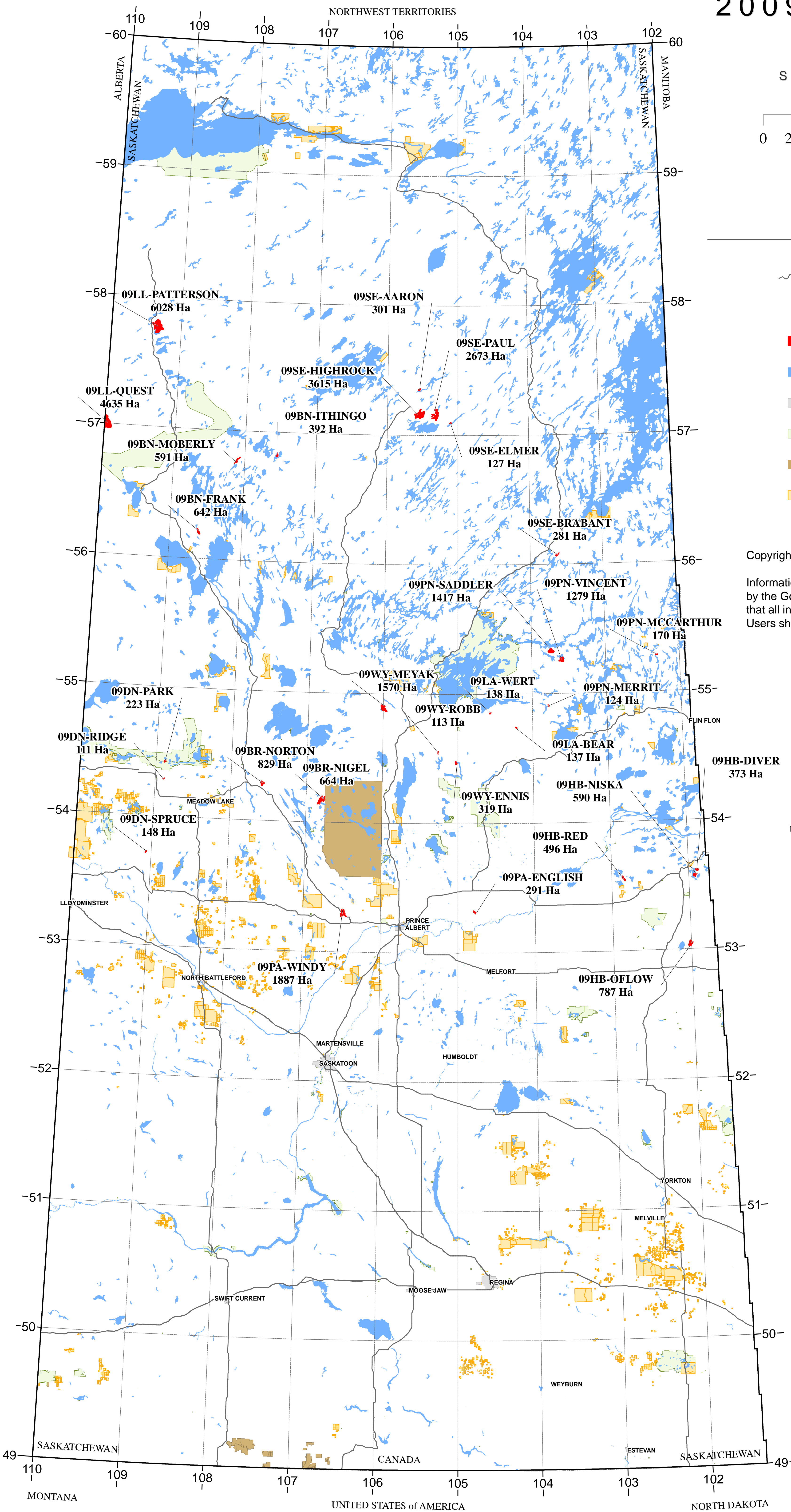


UTM Extended Zone 13, NAD83 CSRS98

Fire Management &  
Forest Protection  
December 2009  
Fire\_History\_All\_2009.mxd



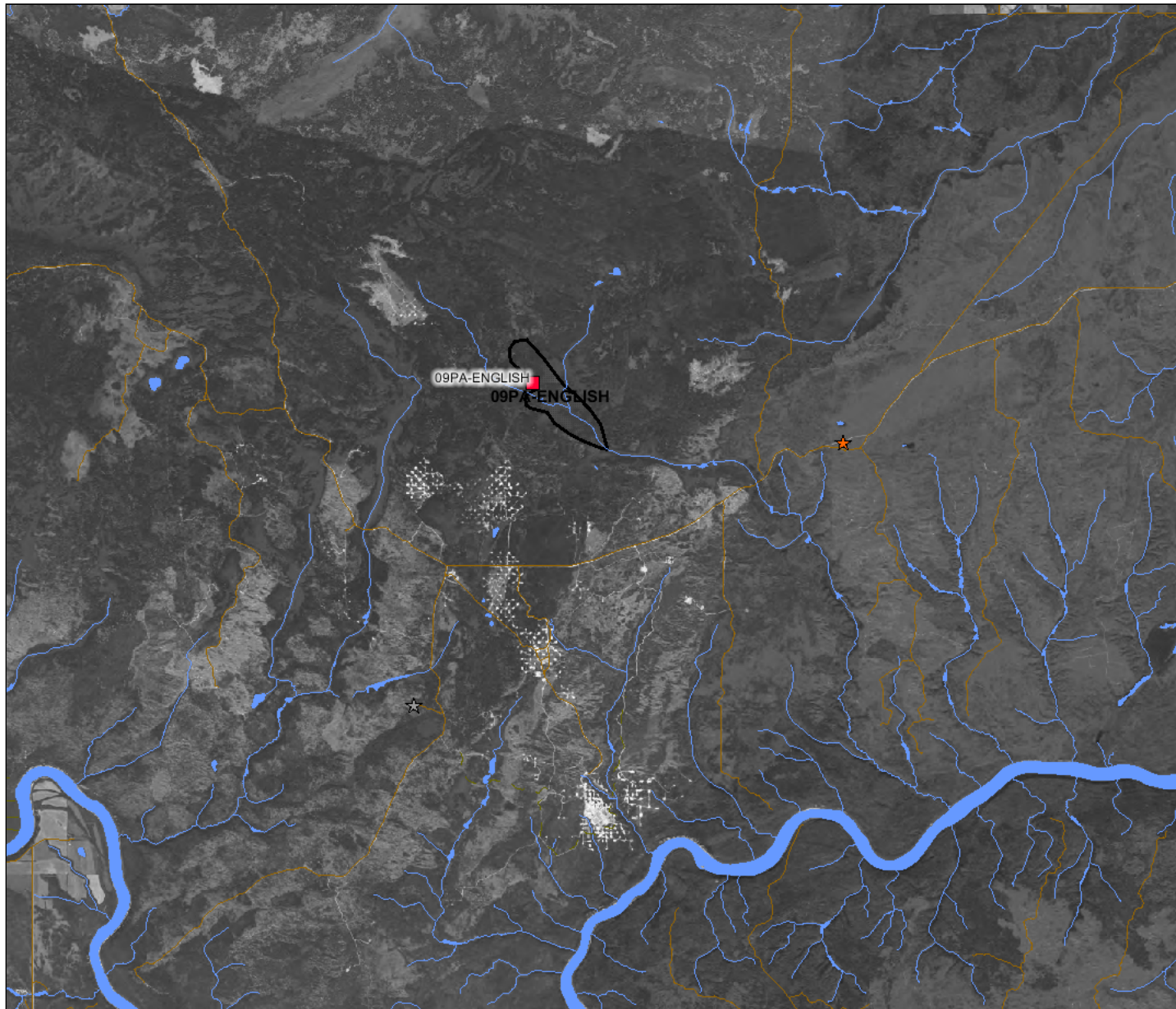
Total of 511 fire starts  
35 Total >= 100 ha







# English Fire - Shore Gold - June 2009



## Legend

- Provincial Boundary
- ★ AGRICULTURAL
- ★ FORESHORE
- ★ MISC USE PERMIT
- ★ QUARRY
- ★ WATER PERMIT
- Towns
- Sask. Road Network
- NTS 1:50 Trails
- NTS 1:50 Railways
- Values Inventory Points
- Lake Name Labels
- ★ CABIN
- ★ CAMP
- ★ COMMERCIAL
- ★ FORESHORE
- ★ GAS & OIL
- ★ MINING
- ★ MISC USE PERMIT
- ★ OTHER
- ★ SUBDIVISION
- ★ UNSURVEYED
- ★ WATER PERMIT
- ★ LDIS Structural Values
- ★ CABIN
- ★ CAMP
- ★ COMMERCIAL
- ★ EASEMENT
- ★ GAS & OIL
- ★ MINING
- ★ MISC USE PERMIT
- ★ UNSURVEYED
- ★ LDIS Non-Structural Values
- Authority
- Historic Park
- Historic Site
- Natural Environment Park
- National Park
- Provincial Forest
- Regional Park
- Recreation Park
- Recreation Site
- Wilderness Park
- Air Weapons Range
- Fire Boundaries
- Urban Municipalities
- Indian Reserves



Scale: 1:146,294

0 2.5 5 km.

## Map Notes

COPYRIGHT: GOVERNMENT OF SASKATCHEWAN  
DISCLAIMER: This map is for general reference only. Information on this map are not guaranteed to be accurate or current. Maps produced by this internet mapping site is for FMFP internal use ONLY. THIS MAP IS NOT TO BE USED FOR NAVIGATION.