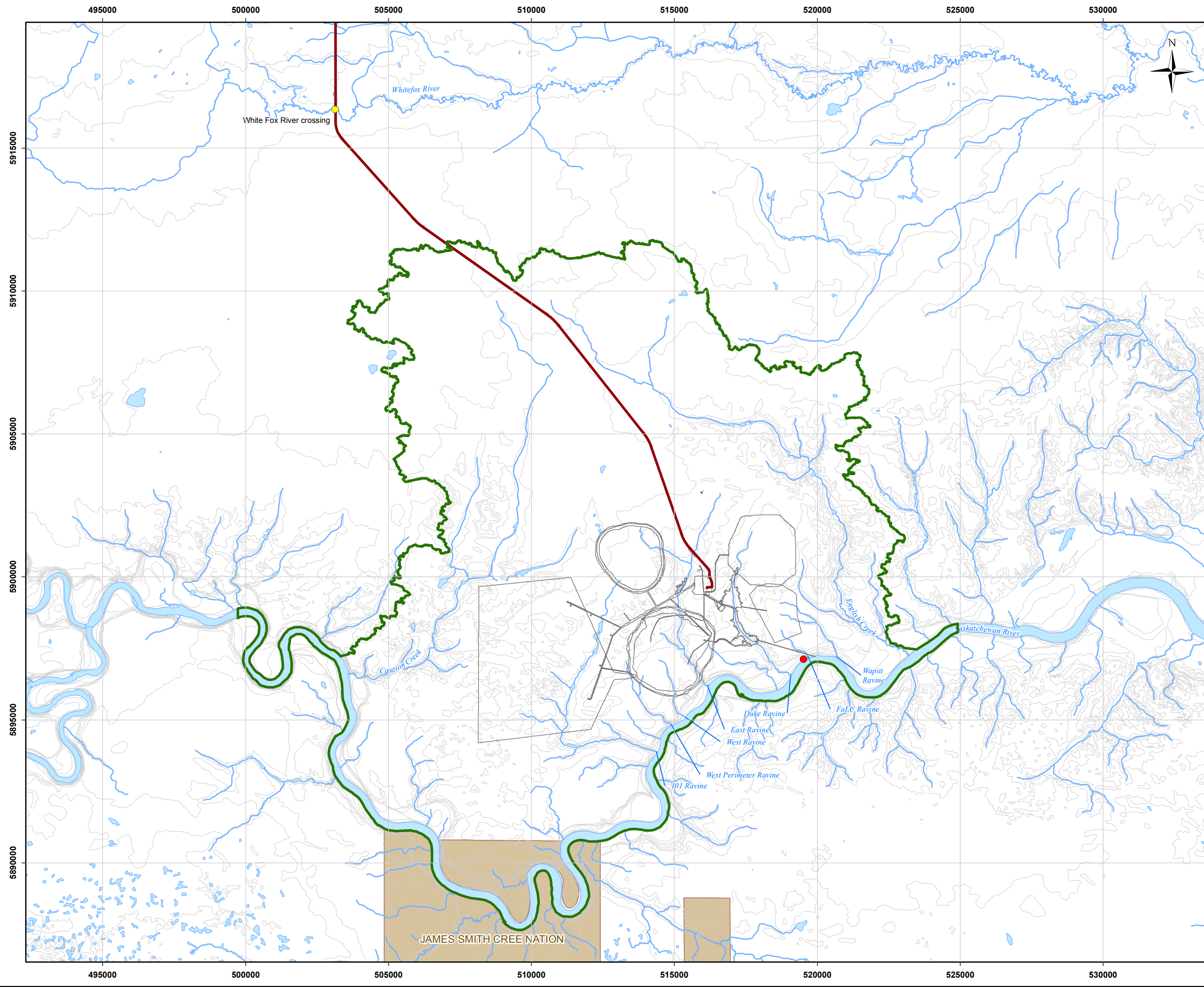
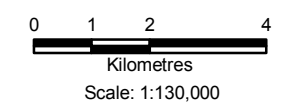


Y:\GIS\Projects\SX03733\_Shore\_Gold\_Diamond\_1\Maping\10\_fisheries-actuals\Baseline\10-100-006.mxd



- Legend**
- Water Discharge Outfall
  - White Fox River Crossing
  - Access Road
  - Watercourse
  - Contour(10m)
  - Waterbody
  - Local Study Area
  - First Nations Reserve



**Reference**  
 Base data: NRCan National Road Network;  
 NTS 1:50,000 scale: GeoSask  
 Indian Reserve/ Municipality Boundaries: GeoSask  
 Mine facilities: AMEC dated July 2010

CLIENT: 		
PROJECT: Star - Orion South Diamond Project		
<b>Proposed Locations of Water Discharge Outfall and Access Corridor</b>		
DATE: October 2010	ANALYST: MY	<b>Figure 6.2.5-1</b>
JOB No: SX0373302	QA/QC: KW	PDF FILE: 10-100-006_effluent_discharge.pdf
GIS FILE: 10-100-006.mxd		
PROJECTION: UTM Zone 13	DATUM: NAD27	