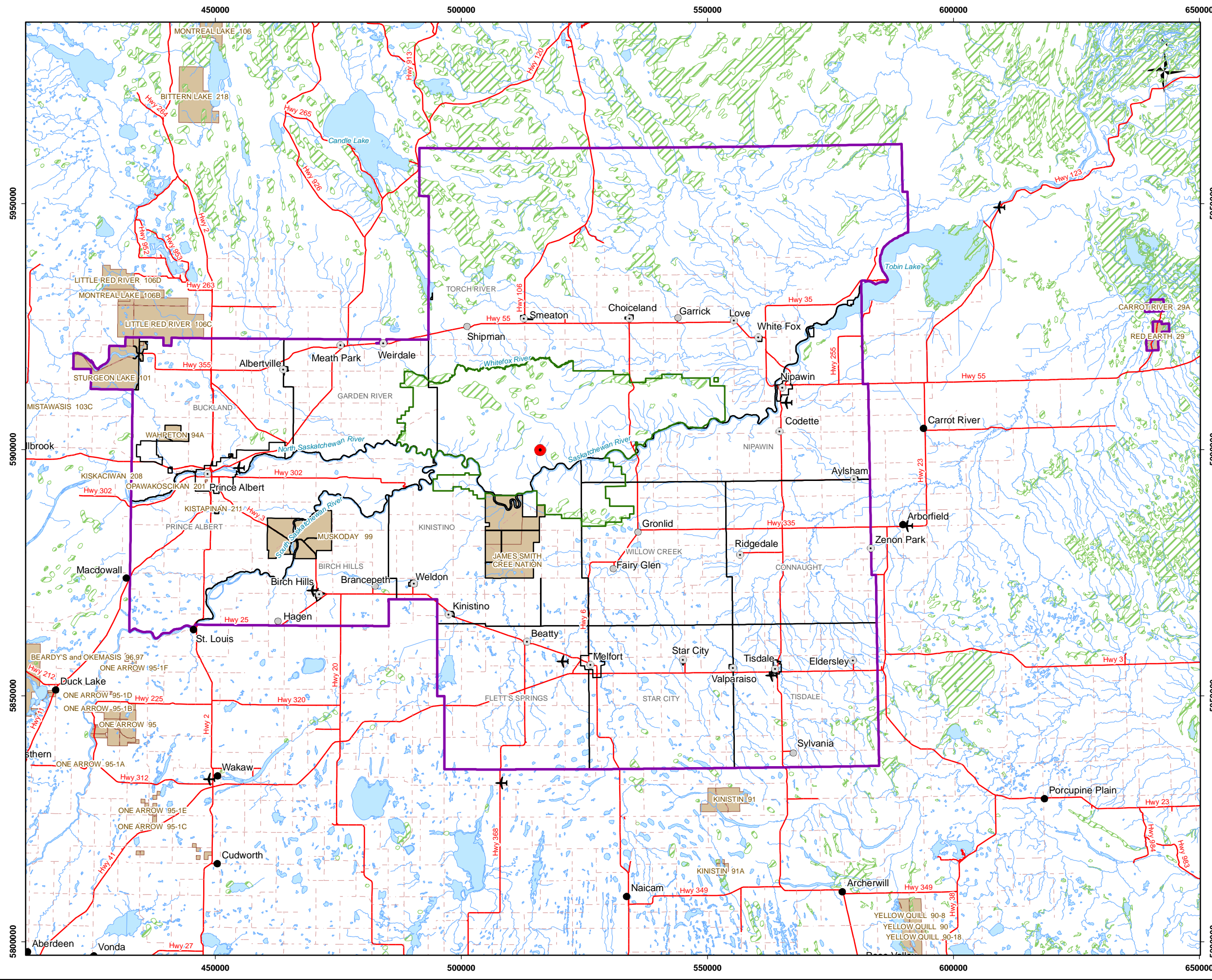
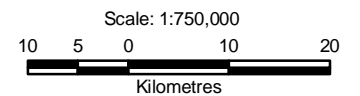


Y:\GIS\Projects\SX03733\_Shore-Gold\_Diamond\_1\Mappping\14\_socio-economic\Baseline\14-100-001\_v4.mxd



- ### Legend
- Project Location
  - ✈ Airport
  - Regional Study Area Communities
  - Hamlets
  - Other Communities
  - Rural Road
  - Highway
  - Watercourse
  - Waterbody
  - ▨ Wetland
  - Rural Municipality
  - Local Study Area
  - Regional Study Area
  - First Nations Reserve



**Reference**  
 Base data: NRCan National Road Network;  
 NTS 1:250,000 scale: GeoSask  
 Indian Reserve/ Municipality Boundaries: GeoSask  
 Mine facilities: Amec, dated 19 February 2009

CLIENT: 		
PROJECT: Star - Orion South Diamond Project		
<b>Socio-Economic Study Area</b>		
DATE: September 2010	ANALYST: MY	<b>Figure 6.4.1-1</b>
JOB No: SX0373302	QA/QC: SD	PDF FILE: 14-100-001_v4.pdf
GIS FILE: 14-100-001_v3.mxd		
PROJECTION: UTM Zone 13	DATUM: NAD27	

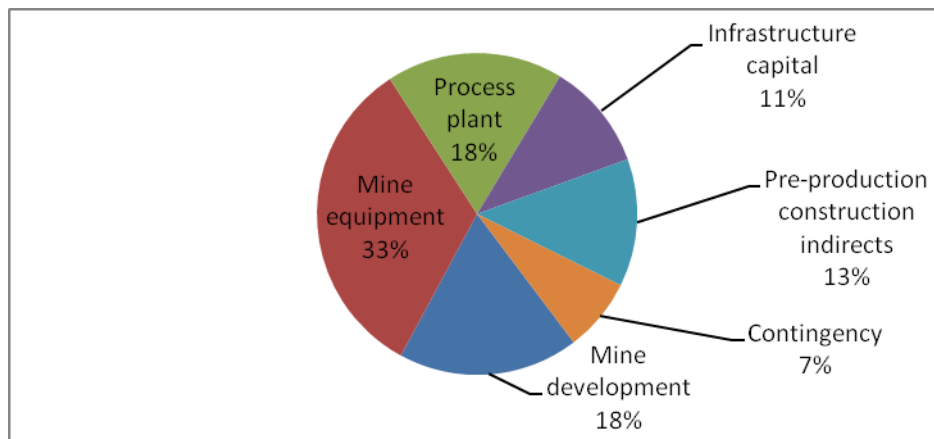


Figure 6.4.1-2: Capital Cost Summary

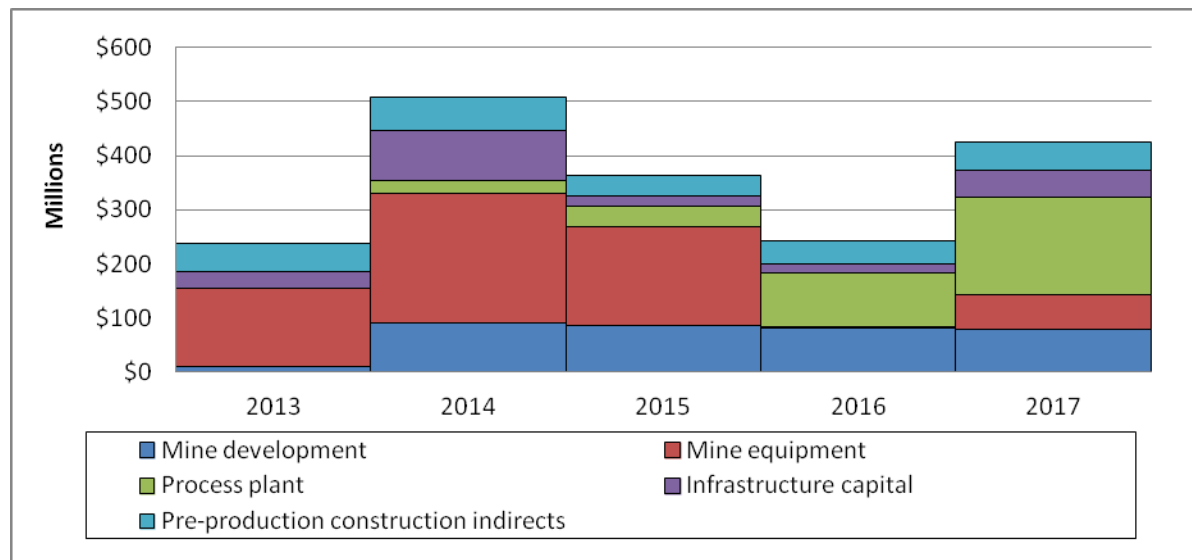


Figure 6.4.1-3: Annual Capital Costs

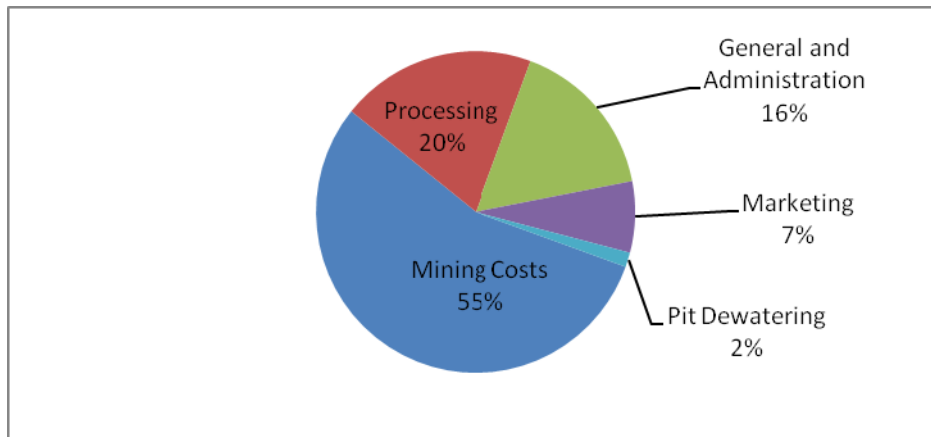


Figure 6.4.1-4: Annual Operating Costs

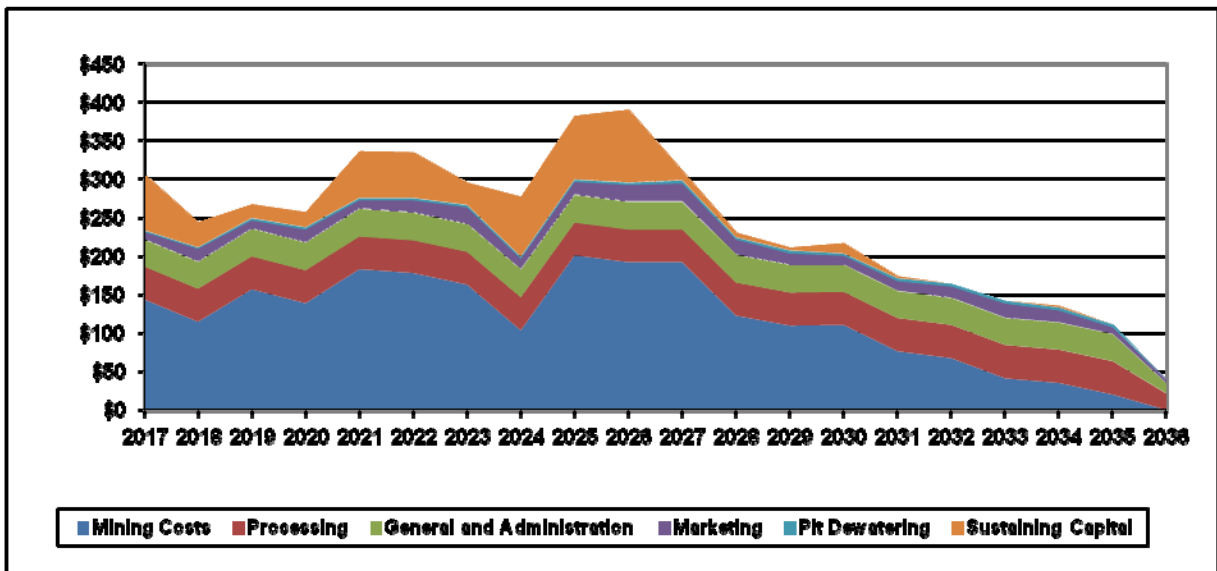


Figure 6.4.1-5: Annual Operating Costs during Project Operations

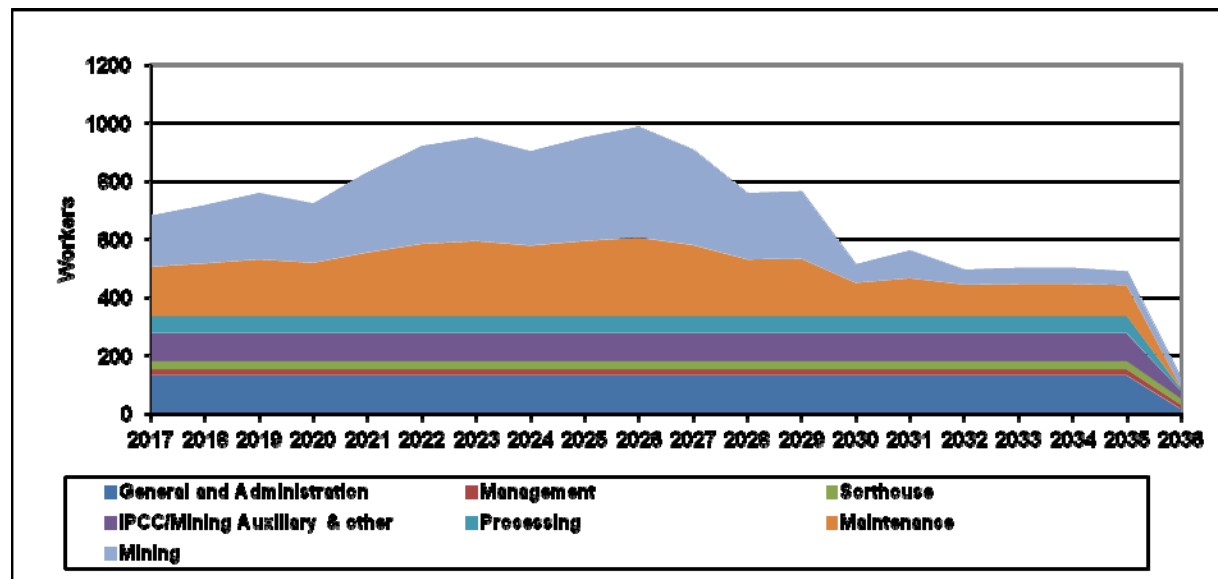


Figure 6.4.1-6: Annual Employment during Project Operations

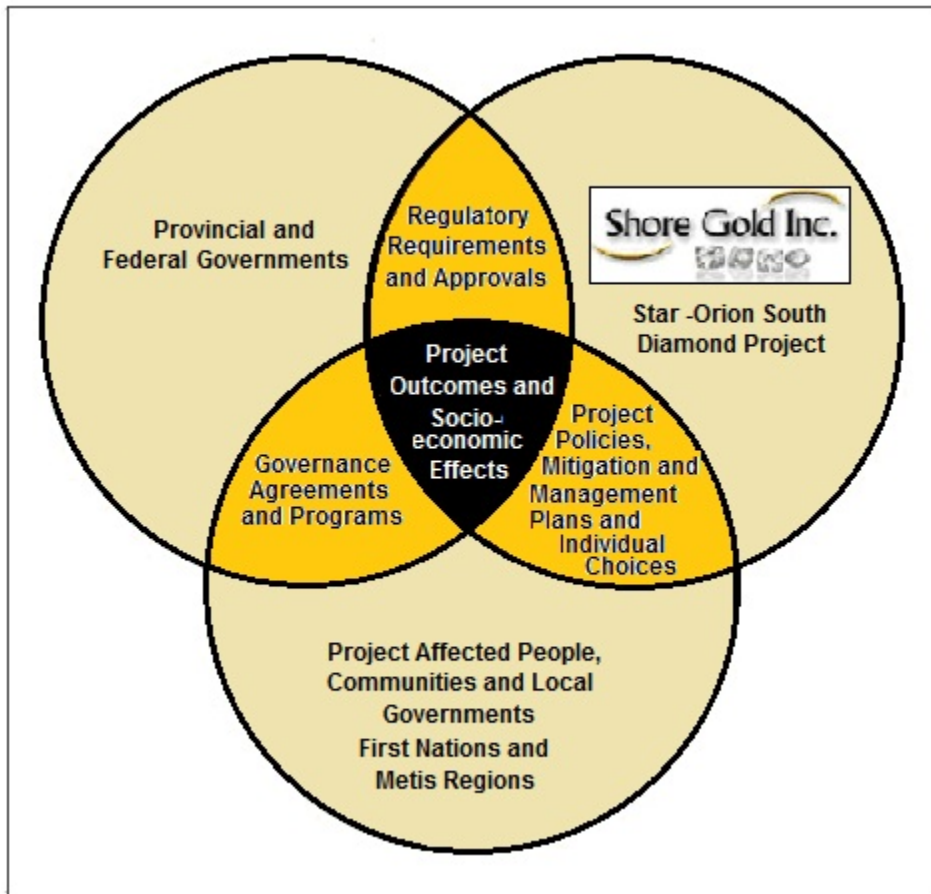
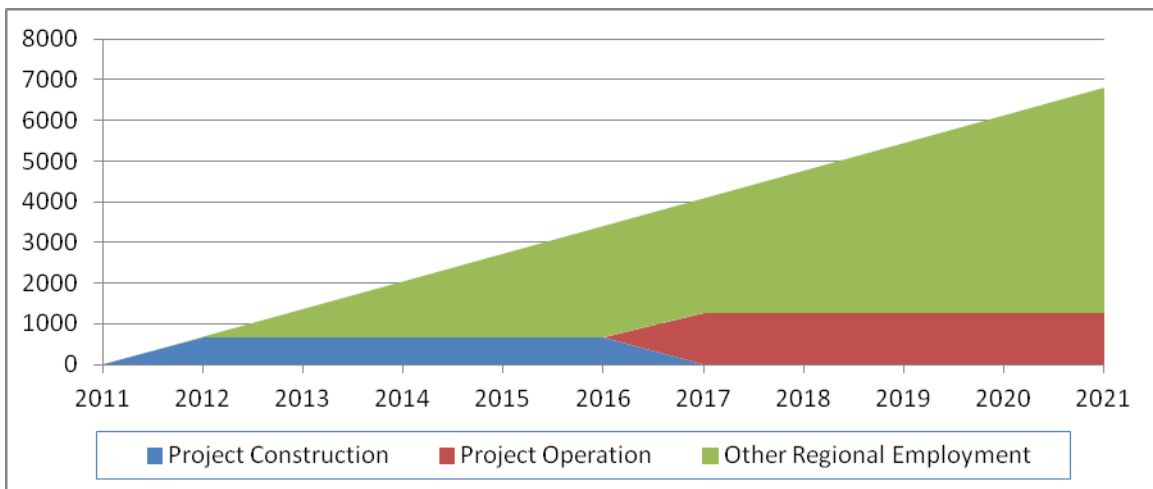


Figure 6.4.1-7: Shared Responsibility for Socio-Economic Effects Management



**Figure 6.4.1-8: Project Contribution to Regional Employment Growth, 2011 to 2021**