

Figure 7.2-1: Levels of Risk

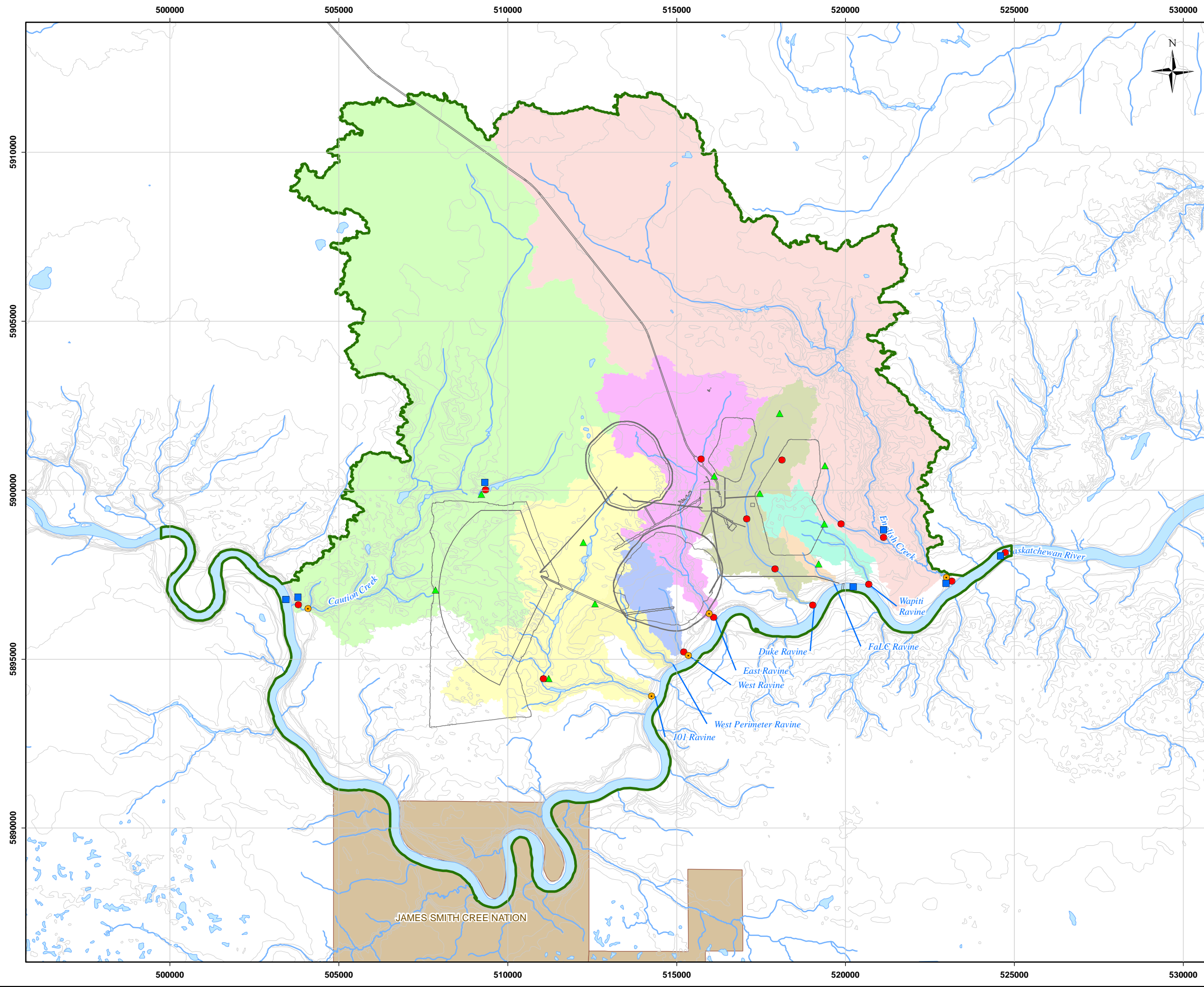


Figure 7.4-1: Typical Dynamic Monitoring Equipment



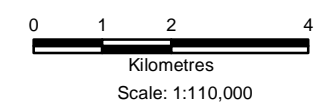
Figure 7.4-2: Typical Static Monitoring Equipment

Y:\GIS\Projects\SX\SX03733_Shore-Gold_Diamond_1\Mapping\09_water-quality\Baseline\09-100-005_v3.mxd



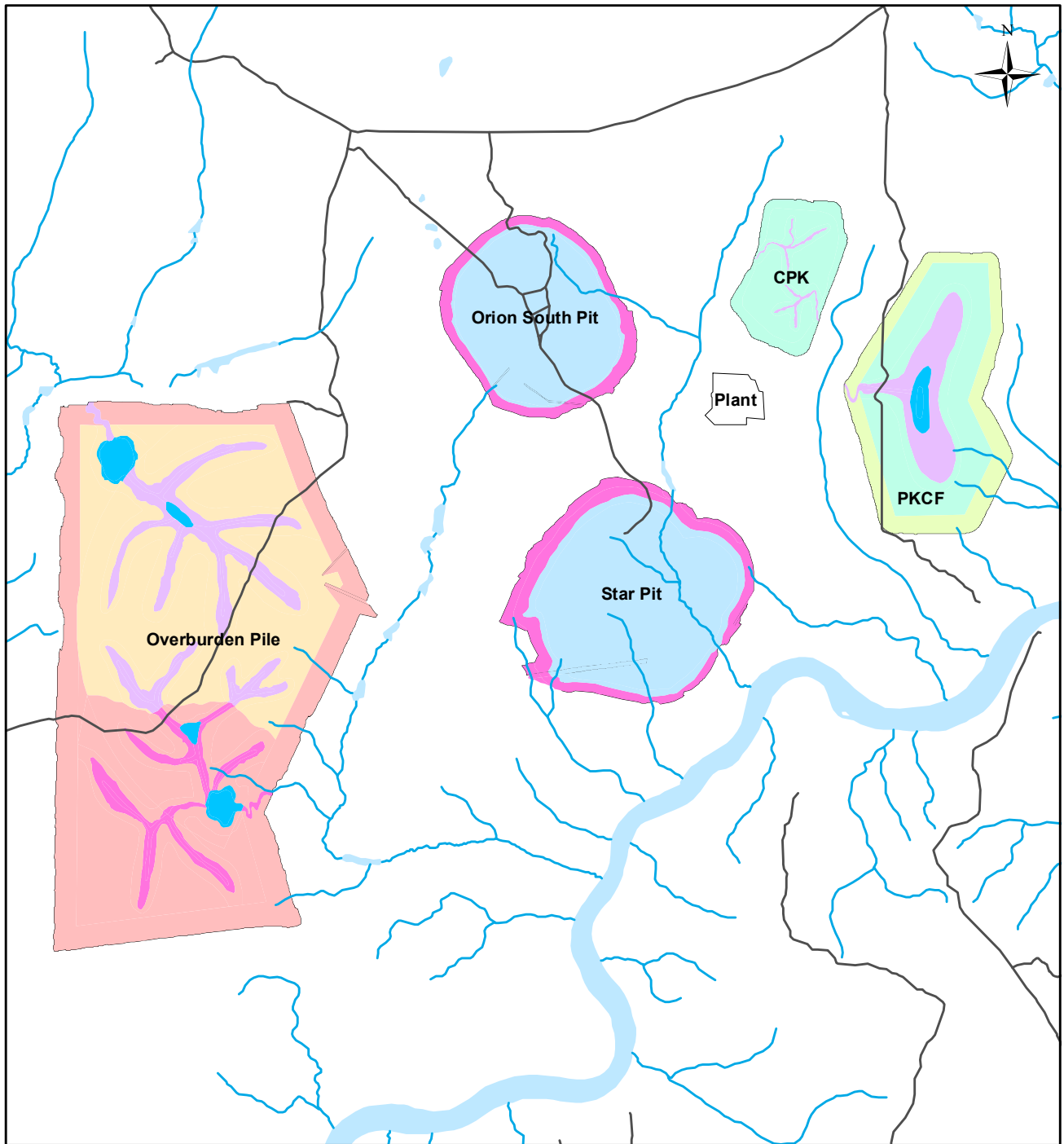
- Legend**
- ▲ Shallow Groundwater Well
 - Hydrology Site
 - Water Quality Monitoring Site
 - Fisheries and Aquatic Monitoring Site
 - Road
 - Watercourse
 - Contour(10m)
 - Waterbody
 - Local Study Area
 - First Nations Reserve

- Major Watershed**
- 101 Ravine
 - Caution Creek
 - Duke Ravine
 - FALC Ravine
 - East Ravine
 - English Creek
 - Wapiti Ravine
 - West Perimeter Ravine
 - West Ravine



Reference
 Base data: NRCan National Road Network;
 NTS 1:50,000 scale: GeoSask
 Indian Reserve/ Municipality Boundaries: GeoSask
 Mine facilities: AMEC dated August 30, 2011

CLIENT: 		
PROJECT: Star - Orion South Diamond Project		
Water Monitoring Sites		
DATE: August, 2012	ANALYST: MY	Figure 7.4-3
JOB No: SX0373302	QA/QC: BO	PDF FILE: 09-100-005_v3_water_monitoring_site.pdf
GIS FILE: 09-100-005_v3.mxd		
PROJECTION: UTM Zone 13	DATUM: NAD27	

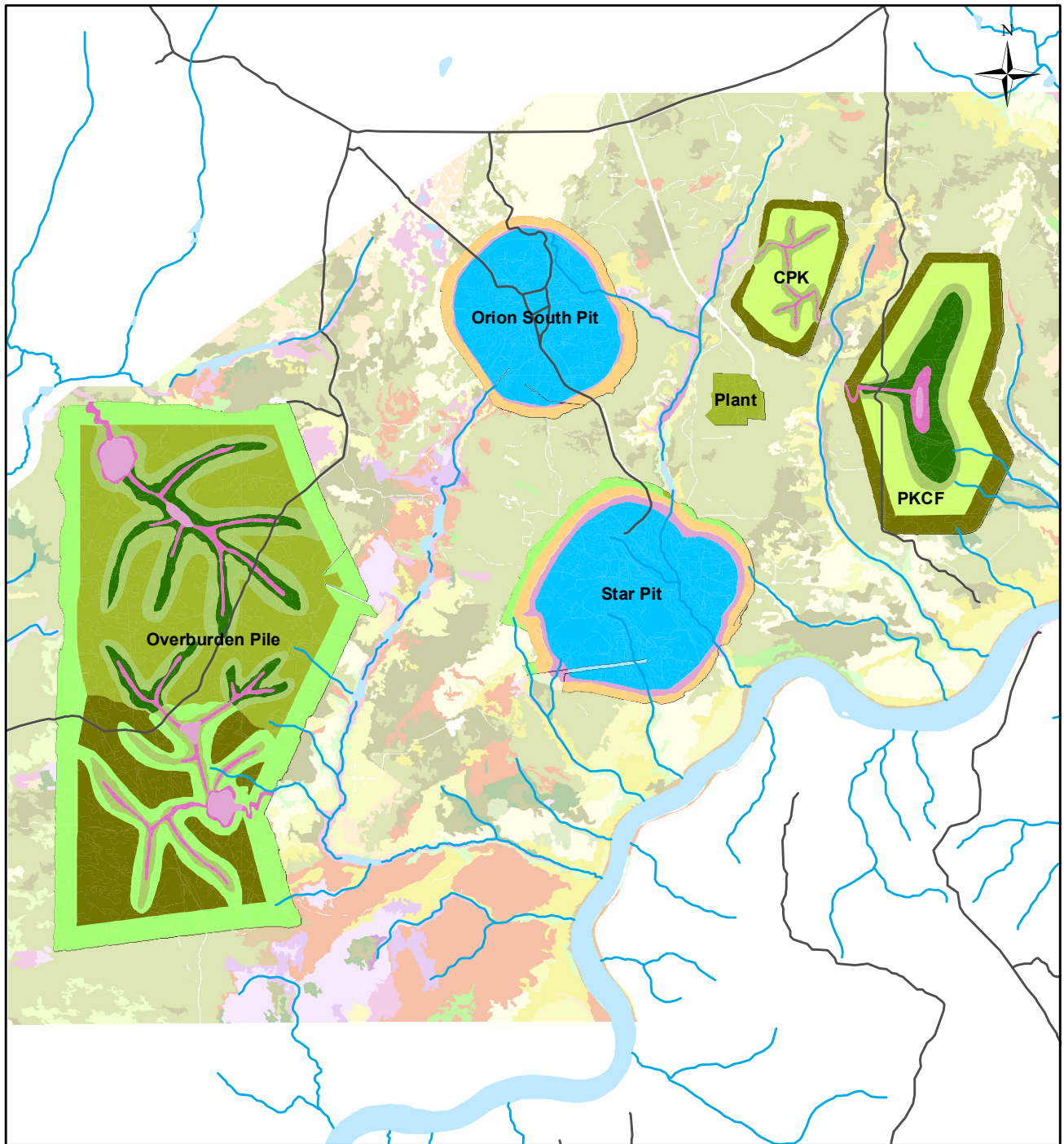


Legend

Soil

- Unclassified Closure
- 85% Moist-Moderate, 15% Dry-Moderate
- 85% Moist-Poor, 15% Dry-Poor
- Dry-Moderate
- Dry-Poor
- Moist-Poor
- Moist-Moderate
- Open Water
- Wet-Moderate

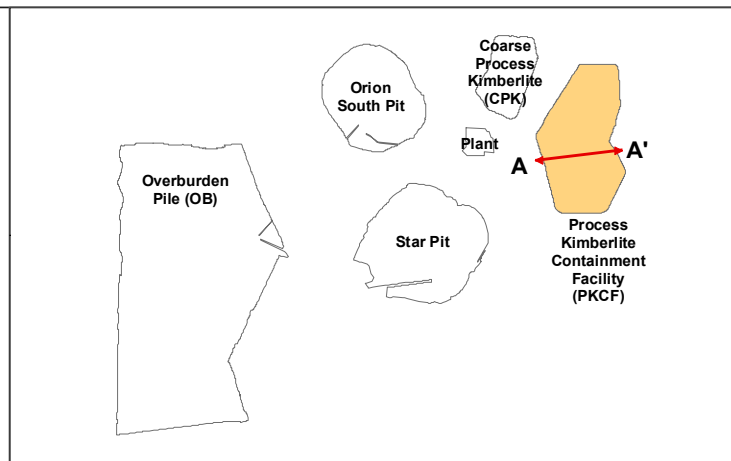
CLIENT:			
PROJECT:		Star - Orion South Diamond Project	
CLOSURE SOIL NUTRIENT AND MOISTURE REGIMES			
			Figure 7.5-1
			DATE: August 03, 2012
GIS TRACKING NUMBER: 20120803_SoilMoisture.mxd	PROJECT No: SX03733		
PROJECTION & DATUM: UTM Zone 13 NAD27	DRAWN BY:		



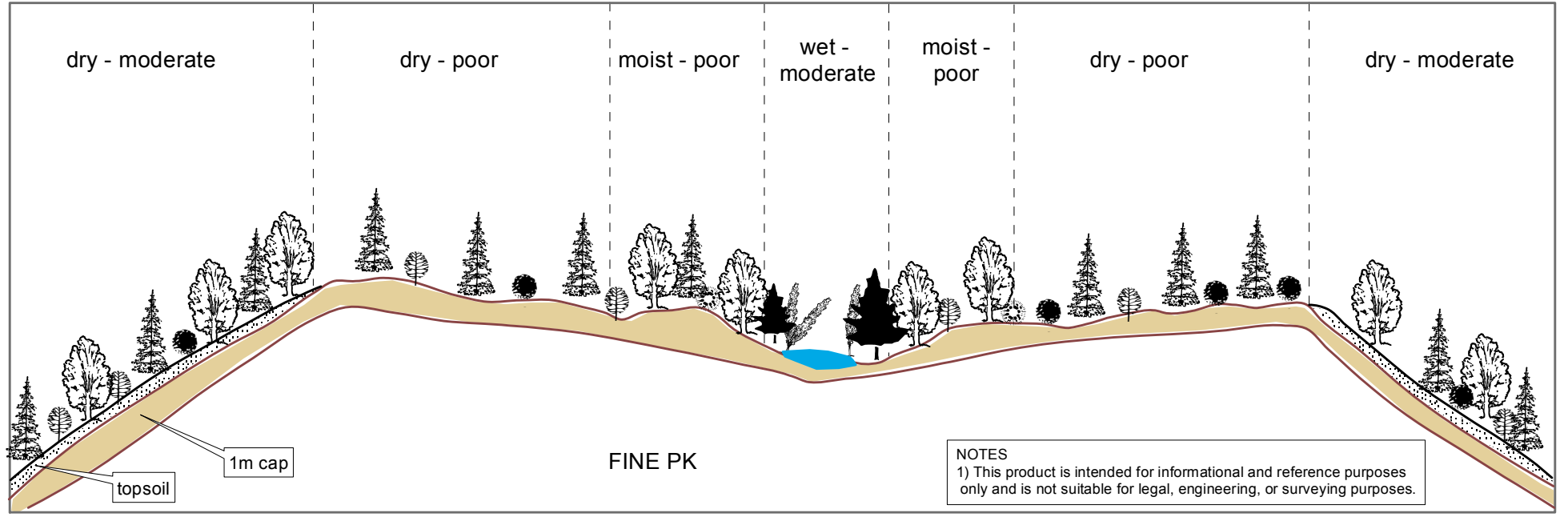
Legend

Boreal Plain Ecosites		BP10
BP01		BP11
BP01a		BP12
BP02		BP14
BP03		BP15
BP04		BP16
BP05		BP18
BP06		BP18a
BP07		BP25
BP09		Reclaimed Open Water Feature

CLIENT:			
PROJECT:		Star - Orion South Diamond Project	
Closure Ecosite Phases			
			Figure 7.5-2
			DATE: August 03, 2012
GIS TRACKING NUMBER: 20120803_BP Ecosites.mxd	PROJECT No: SX03733		
PROJECTION & DATUM: UTM Zone 13 NAD27	DRAWN BY:		



A ← incline 4:1 → | ← undulating 0% - 2% → | ← incline 4:1 → A'



LEGEND

jack pine	willows/ alder	blueberry
white spruce	aspen	saskatoon berry
	labrador tea/ other shrubs	cross section

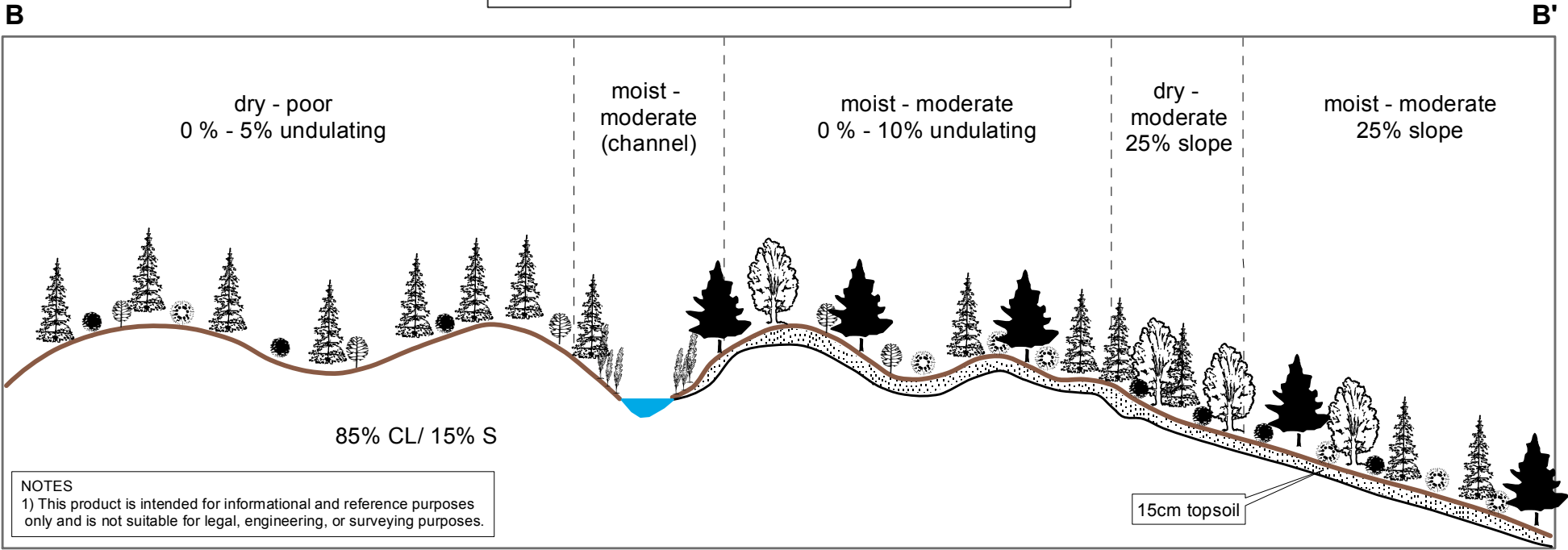
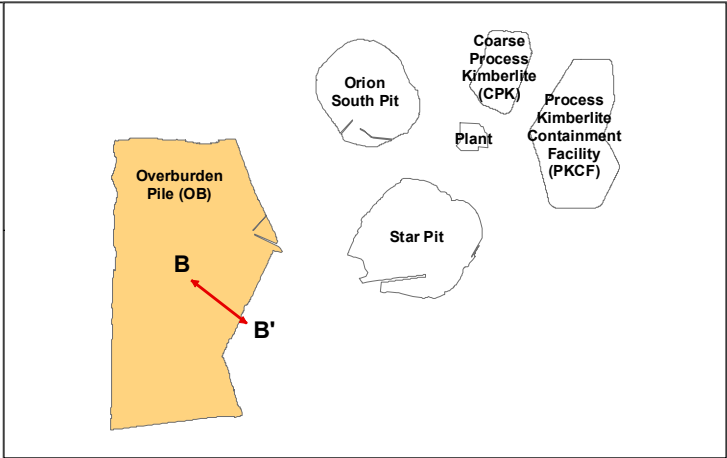
SCALE:
N.T.S.

amec AMEC Environment & Infrastructure
A Division of AMEC Americas Ltd.

DATE: July 26, 2012
PROJECT NO.: SX03733
FILE NAME: 20120726_VegProfilePKCF.mxd
DATUM: NAD83 CSRS
PROJECTION: UTM 13N

Shore Gold Inc.

**Figure 7.5-3
PKCF PILE CROSS SECTION
Conceptual - Not to Scale**

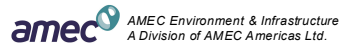


LEGEND

- jack pine
- white spruce
- willows/ alder
- aspen
- labrador tea/
other shrubs
- blueberry
- saskatoon berry
- cross section

SCALE:

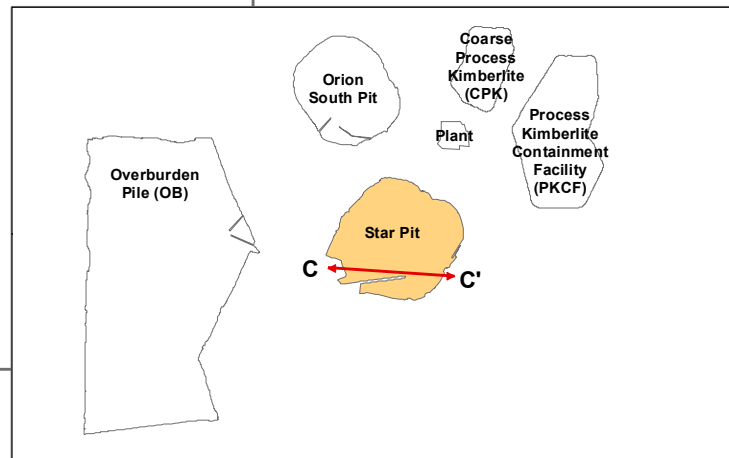
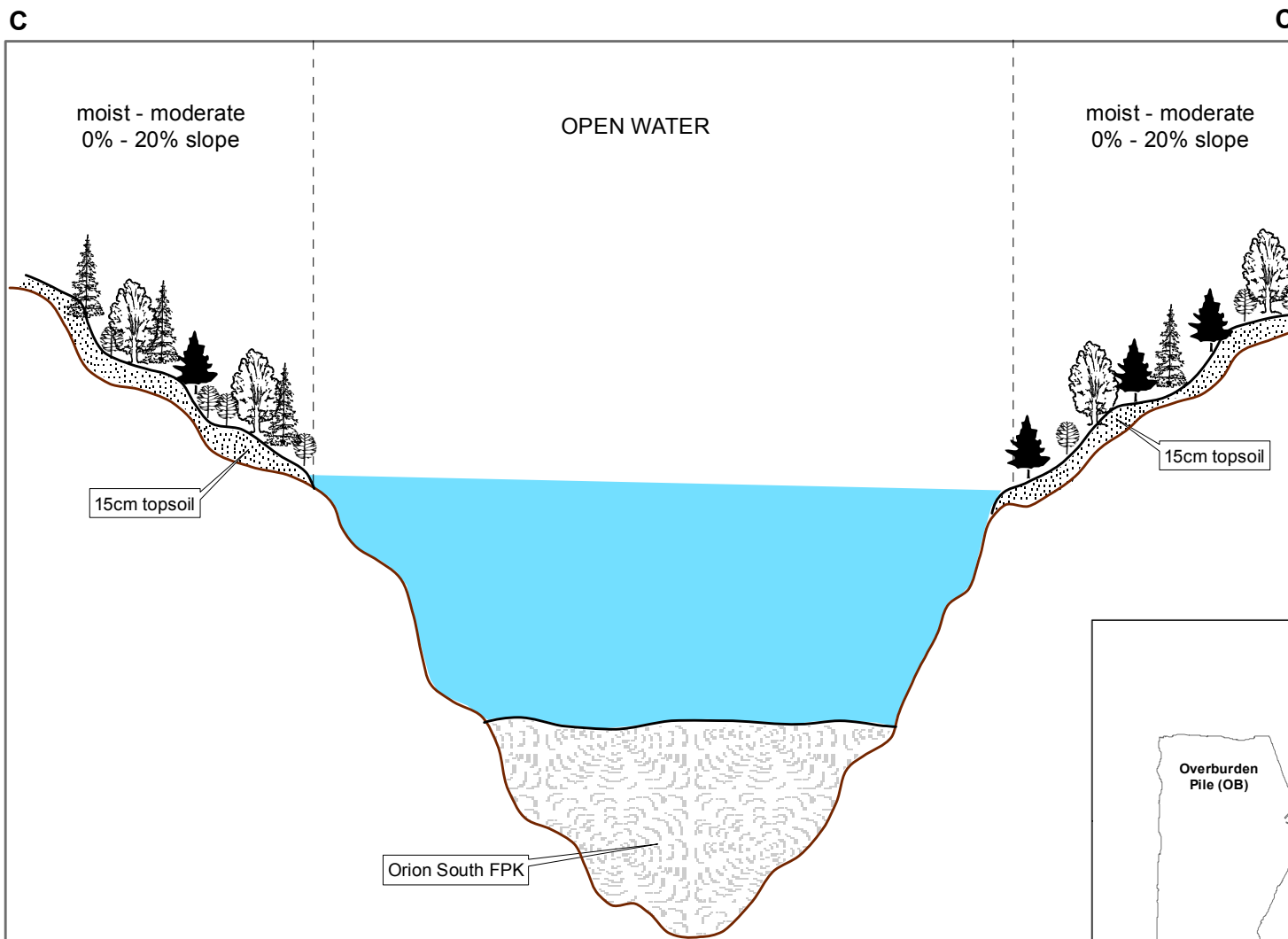
N.T.S.



DATE: July 26, 2012
 PROJECT NO.: SX03733
 FILE NAME: 20120726_VegProfileOB.mxd
 DATUM: NAD83 CSRS
 PROJECTION: UTM 13N

Shore Gold Inc.

**FIGURE 7.5-4
 OB PILE CROSS SECTION
 Conceptual - Not to Scale**



NOTES
 1) This product is intended for informational and reference purposes only and is not suitable for legal, engineering, or surveying purposes.

LEGEND

jack pine	aspen
white spruce	labrador tea/ other shrubs
	cross section

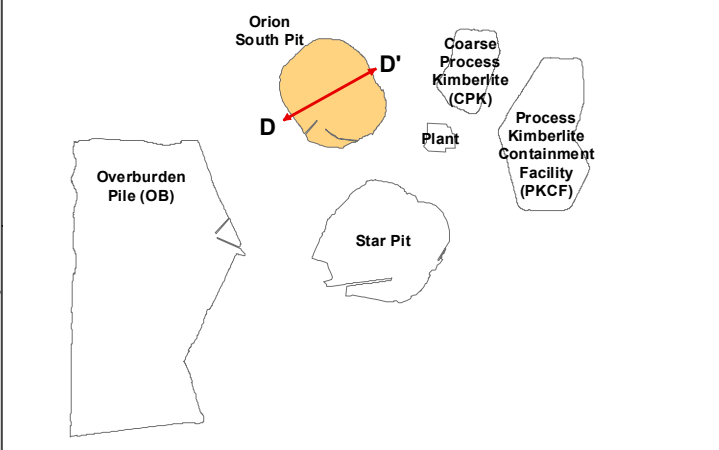
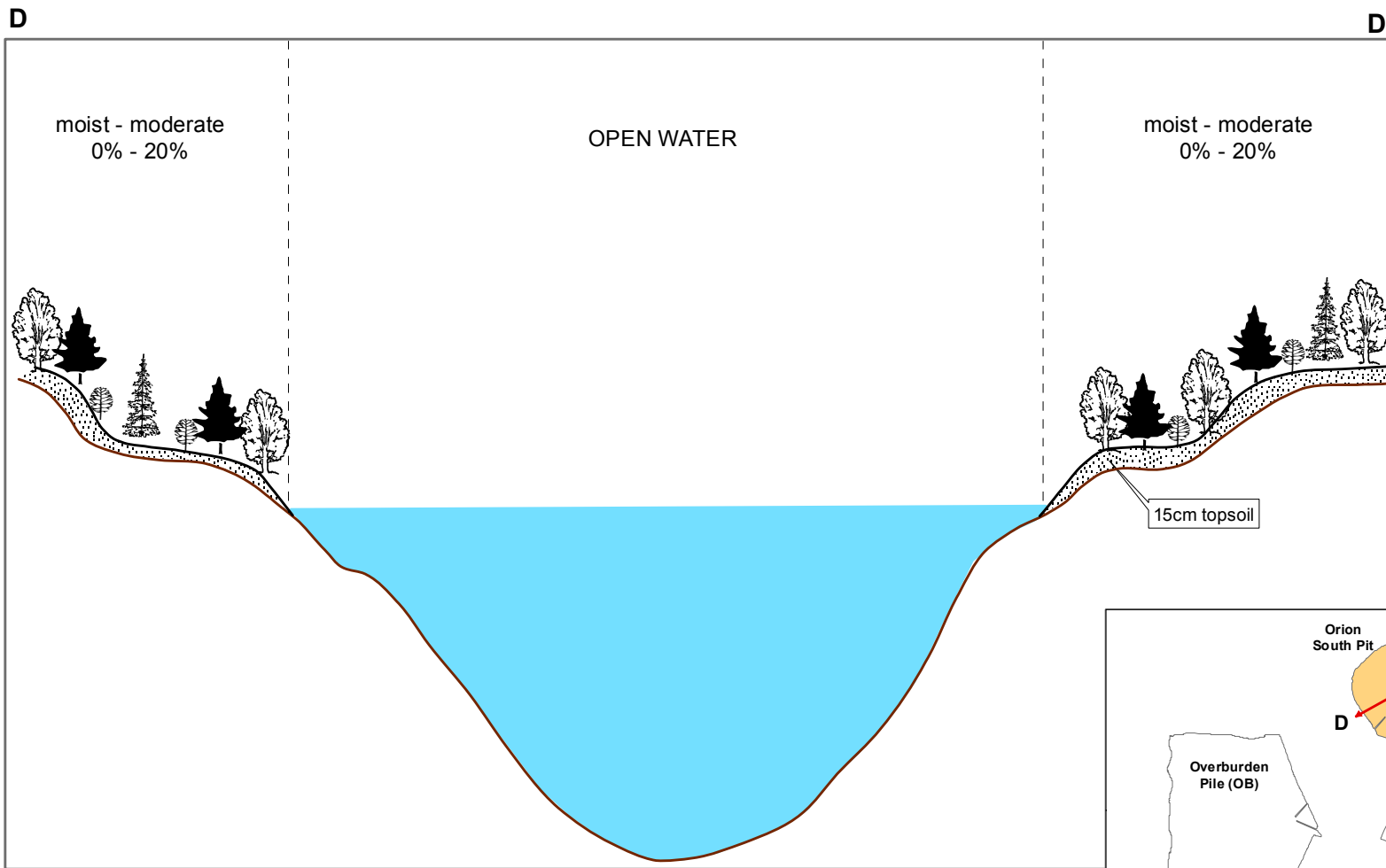
SCALE:
 N.T.S.

AMEC Environment & Infrastructure
 A Division of AMEC Americas Ltd.

DATE: July 26, 2012
 PROJECT NO.: SX03733
 FILE NAME: 20120726_VegProfileStar.mxd
 DATUM: NAD83 CSRS
 PROJECTION: UTM 13N

Shore Gold Inc.

**Figure 7.5-5
 STAR PIT CLOSURE CROSS SECTION
 Conceptual - Not to Scale**



NOTES
 1) This product is intended for informational and reference purposes only and is not suitable for legal, engineering, or surveying purposes.

LEGEND	
jack pine	aspen
white spruce	labrador tea/ other shrubs
	cross section ↔

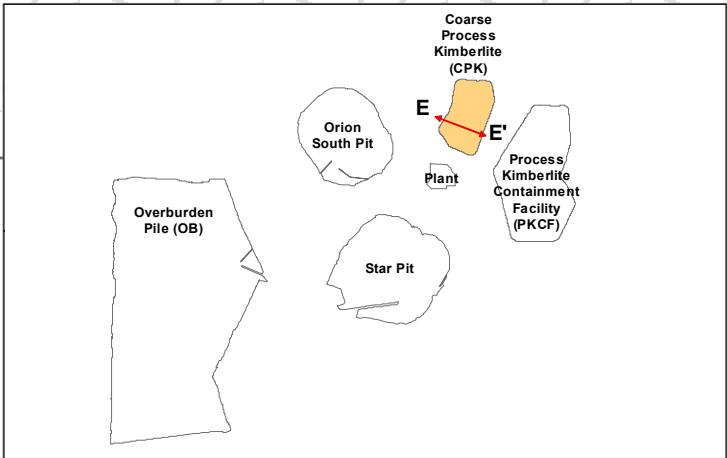
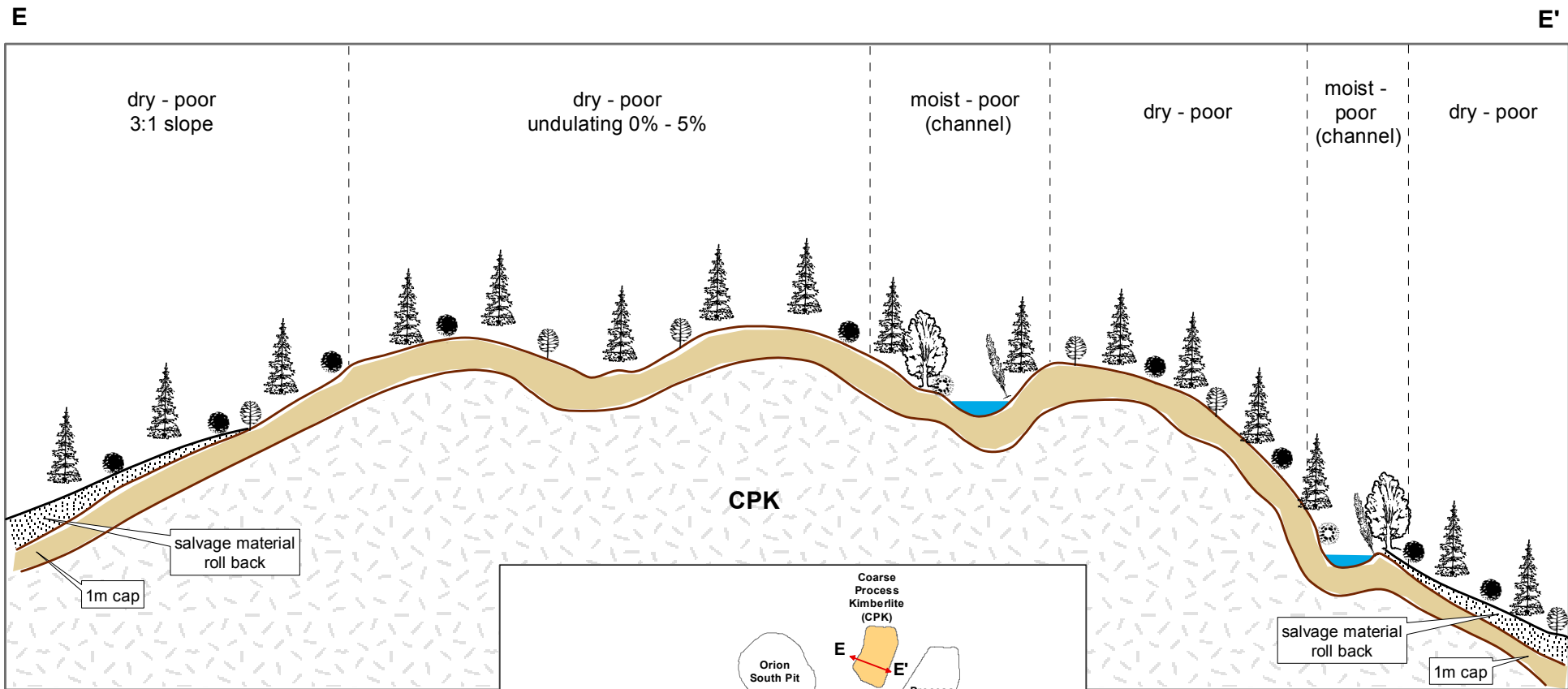
SCALE:
 N.T.S.

amec AMEC Environment & Infrastructure
 A Division of AMEC Americas Ltd.

DATE: July 26, 2012
 PROJECT NO.: SX03733
 FILE NAME: 20120726_VegProfileOrion.mxd
 DATUM: NAD83 CSRS
 PROJECTION: UTM 13N

Shore Gold Inc.

**Figure 7.5-6
 ORION PIT CLOSURE CROSS SECTION
 Conceptual - Not to Scale**



NOTES
 1) This product is intended for informational and reference purposes only and is not suitable for legal, engineering, or surveying purposes.

LEGEND		
jack pine	willows/ alder	blueberry
white spruce	aspen	saskatoon berry
	labrador tea/ other shrubs	cross section

SCALE:
 N.T.S.

amec AMEC Environment & Infrastructure
 A Division of AMEC Americas Ltd.

DATE: July 26, 2012
 PROJECT NO.: SX03733
 FILE NAME: 20120726_VegProfileCPK.mxd
 DATUM: NAD83 CSRS
 PROJECTION: UTM 13N

Shore Gold Inc.

Figure 7.5-7
CPK PILE CROSS SECTION
Conceptual - Not to Scale