

**APPENDIX 3-H  
2012 KSM PROJECT ADVERTORIALS, MEETING  
NOTICES, AND NEWSPAPER ARTICLES**

---

**Mining Our Resources**

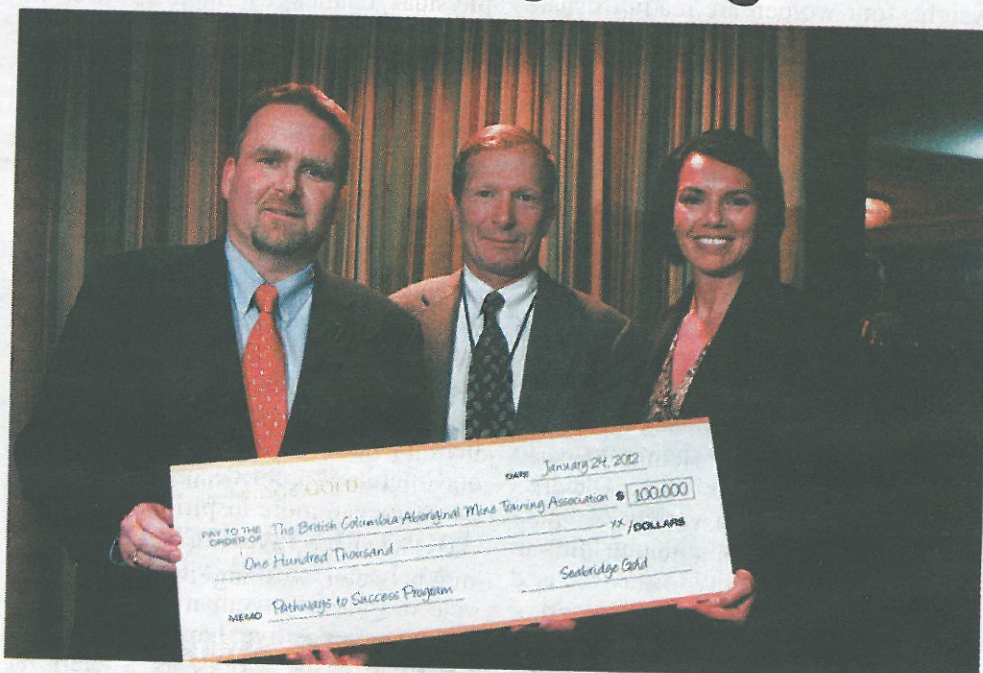
# Seabridge contributes \$100,000 toward Aboriginal essential skills upgrading in BC

Seabridge Gold Inc. (TSX: SEA) (NYSE Amex: SA) is proud to announce its contribution of \$100,000 to the British Columbia Aboriginal Mine Training Association (BC AMTA). This contribution will help fund the delivery of an essential skills upgrading program in three Aboriginal communities in northwestern BC. Seabridge presented the cheque to BC AMTA at a reception held at the 2012 Mineral Exploration Roundup conference in Vancouver, BC.

“Responsible mine development is about finding ways to ensure that the benefits of mining are shared, and that

includes hiring locally and supporting economic development in regions where projects are based,” said Jay Layman, Seabridge’s Executive Vice President and Chief Operating Officer. “Our contribution to BC AMTA’s Pathways to Success program was the right decision for us to make.”

The Pathways to Success (P2S) program provides Aboriginal candidates access to learning tools and resources to enhance their overall employability. P2S



L to R: Brent Murphy and Jay Layman (Seabridge Gold) with Laurie Sterritt (BC AMTA).

incorporates workplace based training, job readiness and skills enhancement, with a focus on helping students to develop literacy skills (including reading, writing and numeracy) so that they can attain the necessary prerequisites for occupational training. Seabridge’s contribution will support the delivery of three, 10-person PS2 training programs in Gitanyow, Gitksan and Tahltan communities.

“With so much development underway in northwestern BC, it’s already becoming a challenge for exploration

and mining projects to find the people they need for their BC projects,” says Laurie Sterritt, BC AMTA’s Executive Director. “Seabridge’s contribution clearly demonstrates they understand that workforce capacity development in Aboriginal communities is a way to deliver business results. We hope other companies recognize the importance of investing in educational programs like this, not only to benefit their financial bottom lines, but to create measurable impacts in the communities where

*(Continued on page 27)*



## DENE-COR CONSTRUCTION LTD.

### OIL FIELD CONTRACTORS

- Seismic Line Clearing • Road Construction
- Lease Building, Pipeline and Water
  - Vac Services

Ph: 1.877.707.5190  
Fax: 1.877.707.5178



A Cold Lake First Nations and Cordy Oilfield Services Joint Venture

## Rockex Mining Corporation

A new IRON ORE company in Canada

Toronto Office  
55 University Ave  
Suite 700  
Toronto, ON  
M5H 2J7  
+1 905 244 4201

**TSX:RXM**

Thunder Bay Office  
580 New Vickers St.  
Thunder Bay, ON  
P7E 6P1  
+1 807 623 0661

Located in Northwestern Ontario, Canada  
NI 43-101 compliant mineral resource:  
1 billion tonnes @ 29% iron

info@rockexmining.com

[www.rockexmining.com](http://www.rockexmining.com)



## BC AMTA & Seabridge Gold: Partnering on Pathways to Success

BC AMTA: [www.bcamta.ca](http://www.bcamta.ca)  
Seabridge Gold: [www.seabridgegold.net](http://www.seabridgegold.net)



BCAMTA

British Columbia Aboriginal  
Mine Training Association

SEABRIDGE GOLD

# Hemlo Mines creates opportunities for First Nations students

OMA member Barrick Hemlo Mines is providing opportunities for residents of two nearby First Nations, Pic River and Pic Mobert, in Northwestern Ontario -- In 2009, the original 1992 agreement between Hemlo and these First Nations was broadened -- It creates a framework to train First Nations people in skills for present and future mining employment, to support business development and to include involvement in environmental stewardship programs. . . .

"The agreement helps build capacity in First Nation communities to ensure that they benefit from mining," said Roger Souckey, Superintendent of Employee Relations at Hemlo Mines. "About 50 First Nations people work at Hemlo Mines, or about 10% of the workforce. The mine is a benefit to the area."

The Hemlo Operations of Barrick include the Williams and David Bell gold mines. The mines purchased goods and services worth \$35 million in Ontario in 2010 and \$147 million in Canada. In 2010, Hemlo Mines paid taxes and royalties of \$8 million and contributed a further \$800,000 in a variety of donations to local communities.

However, statistics no matter how impressive they are do not show the personal side of positive numbers. Myles Michano from Pic River First Nation and Hannah Desmoulin from Pic Mobert First Nation are both working at Hemlo in environmental monitoring jobs and the company is funding their education to earn environmental technician diplomas.

Mr. Michano, 29, is able to split his time between working at Hemlo and

taking care of his ailing grandmother at Pic River. He has helped develop environmental monitoring policies for the reserve and he works in the field taking water samples, carrying out inspections and monitoring pipelines at the mine site. He is pursuing his diploma at Sault College in Sault Ste. Marie.

Ms. Desmoulin, 22, is a mother of two who was driving a shuttle bus between her reserve and the mine. Now, she is doing environmental monitoring duties at the mine and working on her diploma from Seneca College in Toronto by correspondence. "Where else can I get an opportunity like this," she said.

In Ottawa last year, Barrick's Hemlo Operations was presented with the Mining Association of Canada's Towards Sustainable Mining Leadership Award. Hemlo received an "A" ranking in all independently monitored TSM

categories, which include tailings management, energy use, external outreach and crisis management planning. While Hemlo's scores reflect leadership in this range of categories, external outreach is a critical component of the operation's -- and Barrick's -- ongoing commitment to responsible mining.

Barrick's Hemlo Operations are located about 350 kilometres east of Thunder Bay near Marathon. In 2010, production from the Williams and David Bell mines was 242,000 ounces of gold. Proven and probable reserves contain an estimated 1.4 million ounces of gold.

Mining companies are responsible, solution-providing partners in society. They do more than find, extract and process minerals essential to our modern lifestyle. They volunteer and add great value to the quality of life in their communities and beyond. ▲

## SEABRIDGE CONTRIBUTES \$100,000

(Continued from page 26) they wish to operate."


Canada's mining sector is growing at twice the rate of the economy with a forecasted shortfall of almost 100,000 workers over the coming decade. In BC alone, it's estimated the industry will need 15,000 additional workers over the next 10 years, at a time of strong economic growth in the province, and amid fierce competition from other provinces and industries for labour with similar skill sets. Attracting under-represented groups to the mining industry - such as

members of Canada's Aboriginal communities, as well as women, immigrants and person with disabilities - is critical to ensure a strong provincial and national mining sector for years to come.

Seabridge holds a 100% interest in several North American gold projects. The Company's principal assets are the KSM property located near Stewart, British Columbia, Canada and the Courageous Lake gold project located in Canada's Northwest Territories.

For more information, visit [www.seabridgegold.net](http://www.seabridgegold.net). ▲

ALWAYS ENVIRONMENTALLY RESPONSIBLE



**ASHWORTH EXPLORATIONS LTD.** (Since 1980)

---

Geological Service  
and Acquisition

Phone: (604) 908-9201  
Fax: (604) 926-0466

Email: [ashex@telus.net](mailto:ashex@telus.net)  
Affiliate: [www.geoxplor.com](http://www.geoxplor.com)



## AVALON

### RARE METALS INC.

MATERIALS FOR CLEAN TECHNOLOGY

## Rare Earths for a More Sustainable World






39	64
Y	Gd
57	65
La	Tb
58	66
Ce	Dy
59	67
Pr	Ho
60	68
Nd	Er
61	69
Pm	Tm
62	70
Sm	Yb
63	71
Eu	Lu



TSX & NYSE AMEX: AVL

[www.avalonraremetals.com](http://www.avalonraremetals.com)

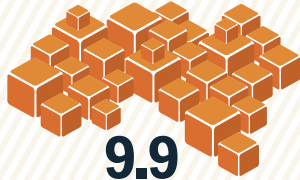
# THE KSM PROJECT

is a proposed gold/copper mine, located 65 kilometres northwest of the town of Stewart, BC.



Proven and probable reserves totalling:

**38.2**  
Million  
ounces of gold



**9.9**  
Billion  
pounds of copper

**191**  
Million  
ounces of silver



**213**  
Million  
pounds of molybdenum

Seabridge Gold acquired a 100 percent stake in the KSM Project in 2000. Since 2006, Seabridge has spent more than \$110 million in exploration, engineering and environmental work to move the proposed mine toward production. The estimated budget for 2012 is \$25 million.

2006 2007 2008 2009 2010 2011 2012

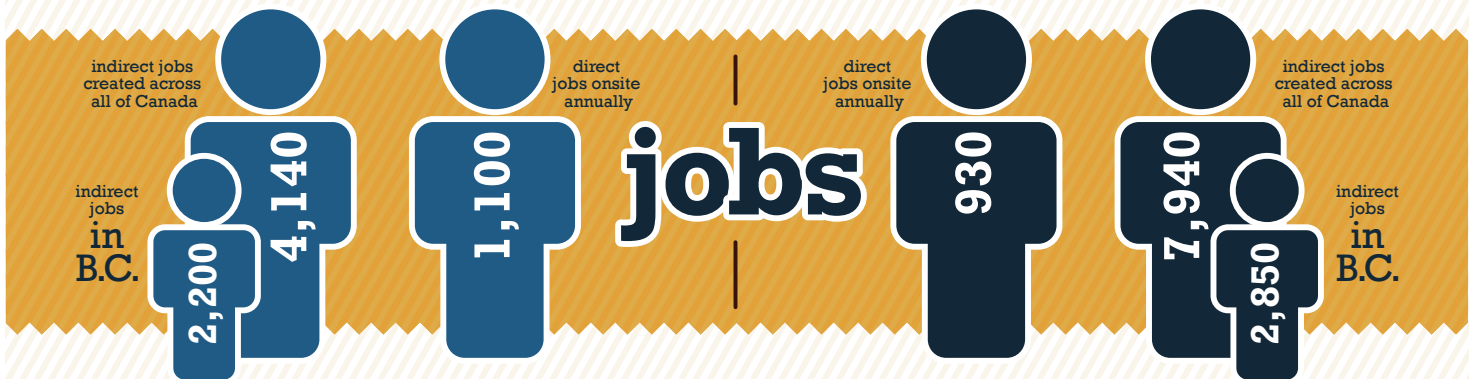
**\$110m spent**

**\$25m**  
budgeted  
for 2012



During Construction (five years):

In Production (50–55 year mine life):



During Construction (five years):

In Production (50–55 year mine life):



Source: DYNATEC model based on Statistics Canada's Input-Output Model of the economies of Canada and the provinces using Seabridge estimates of direct project employment and expenditures.



# Can you imagine if we were still playing with wooden clubs?

Mining supplies us with many products we use in our daily lives, including our golf clubs. In fact, many of today's clubs contain molybdenum – one of the four metals found at Seabridge Gold's KSM Project, a proposed gold / copper mine located 65 kilometres northwest of Stewart.

If Seabridge gets the approvals to build the mine, maybe one day you'll be golfing with a set of clubs containing moly from KSM.

The Bulkley Valley Foundation and the Smithers Rotary Club do great work in our local communities. Seabridge Gold is proud to sponsor the 2012 Smithers Charity Golf Tournament in support of their efforts.

---

## Learn more about the KSM Project

Seabridge Gold Inc.,  
1235 Main Street, P.O. Box 2536,  
Smithers, BC V0J 2N0

[www.seabridgegold.net](http://www.seabridgegold.net)  
[KSM\\_community@seabridgegold.net](mailto:KSM_community@seabridgegold.net)  
1.250.847.4704

**KSM PROJECT**  
**SEABRIDGE GOLD**

# SEABRIDGE GOLD – KSM PROJECT

---

## Proud to Support Local Communities

At Seabridge Gold, we believe responsible project development is about playing an active role in local communities – making connections where we work.



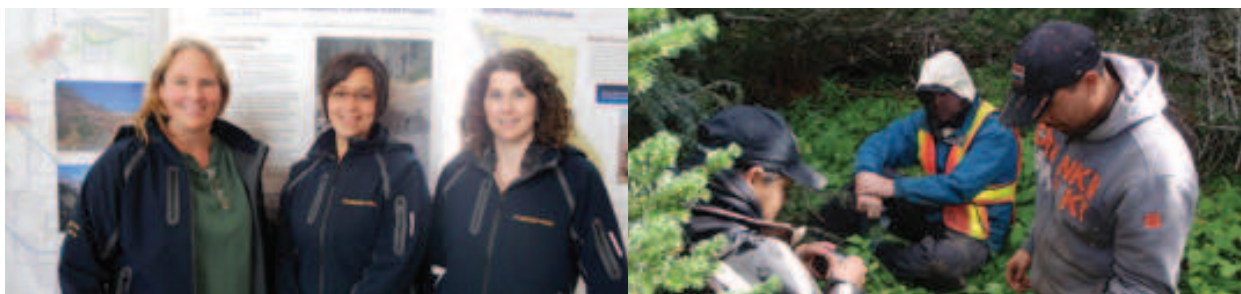
## A proposed mine with community benefits

The KSM Project is a proposed gold/copper mine located 65 kilometres northwest of Stewart. By the end of 2012, Seabridge will have spent more than \$135 million in exploration, engineering and environmental work to develop the project design and prepare for the Environmental Assessment review process. Eighty percent of this spending has been in BC, including the Bulkley Valley and surrounding area.

Today, Seabridge and its partners employ men and women who call northwestern BC home. The company also sources supplies and services locally, whenever possible. If approved, the KSM Project will provide multi-generation employment and will stimulate new infrastructure and services in the region.

## Future plans

Seabridge plans to submit its EA application in the fall and, if approved and permitted, will potentially begin construction in 2014.



---

## Learn more about the KSM Project

Seabridge Gold Inc.,  
1235 Main Street, P.O. Box 2536,  
Smithers, BC V0J 2N0

[www.ksmproject.com](http://www.ksmproject.com)  
[ksm\\_community@seabridgegold.net](mailto:ksm_community@seabridgegold.net)  
1.250.847.4704

**KSM PROJECT**  
**SEABRIDGE GOLD**

# SEABRIDGE GOLD – KSM PROJECT

---



## Do you want to learn more about Seabridge Gold's proposed KSM Project?

Come to our open house on  
Tuesday, September 11 from 6PM to 8PM.

### Location

Northwest Community College  
3966 2<sup>nd</sup> Avenue  
Smithers, BC

---

### Learn more about the KSM Project

Seabridge Gold Inc.,  
1235 Main Street, P.O. Box 2536,  
Smithers, BC V0J 2N0

[www.ksmproject.com](http://www.ksmproject.com)  
[ksm\\_community@seabridgegold.net](mailto:ksm_community@seabridgegold.net)  
1.250.847.4704

**KSM PROJECT**  
**SEABRIDGE GOLD**

# SEABRIDGE GOLD – KSM PROJECT

---



## Do you want to learn more about Seabridge Gold's proposed KSM Project?

Come to our open house on  
Tuesday, September 18 from 6PM to 8PM.

### Location

Northwest Community College  
WAAP GALTS'AP (Community House)  
5331 McConnell Avenue  
Terrace, BC

---

### Learn more about the KSM Project

Seabridge Gold Inc.,  
1235 Main Street, P.O. Box 2536,  
Smithers, BC V0J 2N0

[www.ksmproject.com](http://www.ksmproject.com)  
[ksm\\_community@seabridgegold.net](mailto:ksm_community@seabridgegold.net)  
1.250.847.4704

**KSM PROJECT**  
**SEABRIDGE GOLD**



# SEABRIDGE GOLD – KSM PROJECT

---



## Do you want to learn more about Seabridge Gold's proposed KSM Project?

Come to our open house on  
Tuesday, September 18 from 6PM to 8PM.

### Location

Northwest Community College  
WAAP GALTS'AP (Community House)  
5331 McConnell Avenue  
Terrace, BC

---

### Learn more about the KSM Project

Seabridge Gold Inc.,  
1235 Main Street, P.O. Box 2536,  
Smithers, BC V0J 2N0

[www.ksmproject.com](http://www.ksmproject.com)  
[ksm\\_community@seabridgegold.net](mailto:ksm_community@seabridgegold.net)  
1.250.847.4704

**KSM PROJECT**  
**SEABRIDGE GOLD**

# SEABRIDGE GOLD – KSM PROJECT

---



## Do you want to learn more about Seabridge Gold's proposed KSM Project?

Come to our open house on  
Thursday, October 18 from 6PM to 8PM.

### Location

Al Lawrence Arena (Stewart Recreation Centre)  
804 Main St.  
Stewart, BC

---

### Learn more about the KSM Project

Seabridge Gold Inc.,  
1235 Main Street, P.O. Box 2536,  
Smithers, BC V0J 2N0

[www.ksmproject.com](http://www.ksmproject.com)  
[ksm\\_community@seabridgegold.net](mailto:ksm_community@seabridgegold.net)  
1.250.847.4704

**KSM PROJECT**  
**SEABRIDGE GOLD**

# SEABRIDGE GOLD – KSM PROJECT

---



## Are you interested in learning more about Seabridge Gold's proposed KSM Project?

Come to one of the information sessions for the proposed KSM copper-gold mine being held this month in your area:

### **Telegraph Creek**

Monday, October 15  
1:00 pm to 3:00 pm  
Telegraph  
Recreation Centre

### **Dease Lake**

Monday, October 15  
6:00 pm to 8:00 pm  
School District Office

### **Iskut**

Tuesday, October 16  
6:00 pm to 8:00 pm  
Community Hall

---

### **Learn more about the KSM Project**

Seabridge Gold Inc.  
1235 Main Street, PO Box 2536  
Smithers, BC V0J 2N0

[www.ksmproject.com](http://www.ksmproject.com)  
e: [ksm\\_community@seabridgegold.net](mailto:ksm_community@seabridgegold.net)  
t: 1.250.847.4704

**KSM PROJECT**  
**SEABRIDGE GOLD**

# KSM PROJECT SEABRIDGE GOLD

Come learn about the proposed KSM Project



Seabridge Gold will be holding information sessions in Telegraph Creek, Iskut and Dease Lake for community members to learn about the proposed KSM gold-copper mine.

We invite you to join us to learn more, share your feedback and ask questions.

## Telegraph Creek

**Monday, October 15**  
**1:00 pm to 3:00 pm**  
Telegraph Recreation Centre  
Lunch will be provided

## Dease Lake

**Monday, October 15**  
**6:00 pm to 8:00 pm**  
Dease Lake Community Hall  
Dinner will be provided

## Iskut

**Tuesday, October 16**  
**6:00 pm to 8:00 pm**  
Iskut Community Hall  
Dinner will be provided

Elizabeth Miller, Manager Environmental Affairs, will be joined by members of the KSM Project team to talk with community members and answer your questions.

If you can't attend, email your questions to [ksm\\_community@seabridgegold.net](mailto:ksm_community@seabridgegold.net) or call us at 250-847-4704.

**Learn more about the KSM Project, visit [www.ksmproject.com](http://www.ksmproject.com)**

Canada's First Nations Radio (CFNR) radio ad for Tahltan Community Meetings

Run time: October 9-15<sup>th</sup>, 2012

Script:

Seabridge Gold is holding information sessions on their proposed KSM mine project this month. Join us on Monday October 15<sup>th</sup> in Telegraph Creek from 1 to 3 pm at the Telegraph Rec Centre, or in Dease Lake from 6-8pm at the Dease Lake Community Hall. On Tuesday October 16th we'll be in Iskut from 6-8pm at the Iskut Community Hall. Visit [ksmproject.com](http://ksmproject.com) for more information.

# SEABRIDGE GOLD AIMS TO REDUCE KSM PROJECT FOOTPRINT

A recent decision by Seabridge Gold to redesign the KSM project will reduce waste rock by more than two billion tonnes, protect traditional food sources and ensure water quality.

"After lengthy general discussions with the responsible authorities including Treaty and First Nations, we went back to the drawing board to look at design alternatives to reduce the amount of waste rock that the KSM Project would produce. Our aim from the beginning has been to work collaboratively to put forward a project which accommodates public input prior to submitting the EA Application for review by all responsible authorities," says Rudi Fronk, President of Seabridge Gold.

Originally designed as an open pit, truck and shovel operation, the KSM Project's design improvements include mining the Mitchell deposit in a combined open pit and underground operation which will reduce the size of the pit. The new design is also evaluating road access and tailing alternatives for the project reflecting feedback from the Nisga'a Nation and the Tahltan, Gitksan and Gitanyow First Nations as well as regulators.

Looking at development alternatives is an important part of the Environmental Assessment process. "We're going to release our third Preliminary Feasibility Study for KSM this spring, reflecting our commitment to improving the project design and incorporating stakeholder feedback. We believe the result is a more refined project design that will stand on its technical merits" says Fronk.

For the past three years, Seabridge has been conducting community engagement with the Nisga'a Nation, First Nations and public stakeholders to provide information about the project and listen to feedback. This has included site visits to mines similar to KSM to highlight proposed project details; site visits to KSM; and public meetings. In addition, Seabridge hosts frequent working group sessions with government regulators, Aboriginal groups and their technical consultants to review the project in detail as it has evolved.

Seabridge opened an office in Smithers in 2011, with the goal of providing a place for community members to find out more about the project. Elizabeth Miller, Seabridge's Manager, Environmental Affairs, works out of the Smithers office.

"Being welcome in the communities where we operate is essential to our business. I encourage anyone with questions about KSM to give us a call, or stop by the office to talk with us. Large mining developments are challenging and it can be difficult to understand how everything fits together. Part of our job is to help people understand what the KSM Project involves," says Ms. Miller.

Seabridge plans to file its EA application in late 2012.



**Learn more about the KSM Project**

Seabridge Gold Inc.,  
1235 Main Street, P.O. Box 2536,  
Smithers, BC V0J 2N0

[www.seabridgegold.net](http://www.seabridgegold.net)  
[community@seabridgegold.net](mailto:community@seabridgegold.net)  
1.250.847.4704

**KSM PROJECT  
SEABRIDGE GOLD**

COMMUNITY



SCRABBLE ROUSERS

The fourth annual Scrabble tournament was held at the Smithers library last Friday evening, as a group of 11 wordsmiths challenged each other for lexical dominance.

Cameron Orr /Interior News



Dr. K. Blouw & Dr. C. Page

are pleased to announce the opening of their new Family Practice at 1260 Main Street, Smithers March 29th, 2012 Please call 250-847-2240 for appointments.

New patients also welcome!

Gallery a man's world for March

By Cameron Orr Smithers /Interior News

Don't expect Man Art to be a collection of cliches like raised toilet seats or continuous loops of instant replays.

Man Art will be a venue for male artists across the northwest to show that they're more than just the trade they use to make a living.

Michel Kafer with the Smithers Art Gal-

lery said that the origin of this show was from women-oriented shows from years ago. At the time it was suggested a man's show would be a good idea.

She recently put out a call for men to submit their own art for the show, and there will be over 20 artists on display for the show which opened yesterday. The opening reception is on Mar. 2 at 7 p.m.

"There is a full range of skills and ages and diversity," said Kafer about what people can expect. "There are people coming from Haida Gwaii all the way to Prince George too."

She said the show will help to identify men as artists. Lots of men, she said, work using various crafting skills but those are always used in traditional ways.

"I did ask that

people step outside of that rather than building their typical things," she said.

With a wide range of mediums, people can expect to come away seeing a little of everything.

Man Art runs to Mar. 31. The gallery is open Tuesdays to Saturdays, noon to 4 p.m.

Ride the Lifts with Doug!

Want to win a day of skiing and be treated to lunch at the Whisky Jack lounge? Go to dougdonaldson.ca and enter your name and email address in the box on the homepage. Good luck!



Doug Donaldson, MLA, Stikine | Smithers 847-8841 | Hazelton 842-6338 dougdonaldson.ca | @donaldsondoug | facebook.com/dougdonaldsonmla

RESPONSIBLE MINE DEVELOPMENT IS ABOUT INVESTING IN LOCAL COMMUNITIES

For many people across B.C., mining means opportunity. The industry creates jobs at mine sites and spinoffs for surrounding businesses, the economic benefits of which are often spread across nearby villages, towns and cities. In addition to employment, mining companies also have a responsibility to respect and contribute to the communities in which they operate. Seabridge believes strongly in responsible mining and making a connection with the communities in which it does business.

For example, last year Seabridge participated in several community initiatives in northern B.C., including the Gitksan Summit, the Smithers District Chamber of Commerce and the Northwest Community College job fair. The company also donated to the Stewart Christmas Hamper program, the Gitanyow family dance, the Mount Rainey Figure Skating Club and the Bulkley Valley Fall Fair.

As for its proposed KSM Project, located 65 kilometres northwest of Stewart, Seabridge has visited local communities around the region to outline its proposed KSM Project mine plan and, more importantly, to listen to what citizens have to say about the development.

A common theme that arises is the need to create more jobs in the region, particularly for young people, many of whom are leaving their homes to look for work elsewhere. But, with the electrification of Highway 37 and new development projects on the horizon, including Seabridge's proposed KSM Project, the job prospects are starting to look a lot more promising. Canada's mining sector is growing at twice the rate of the economy, with a forecasted shortfall of almost 100,000 workers over the coming decade. In B.C. alone, it's estimated the industry will need 15,000 additional workers over the next 10 years amid fierce competition from other provinces and industries for labour with similar skill sets.

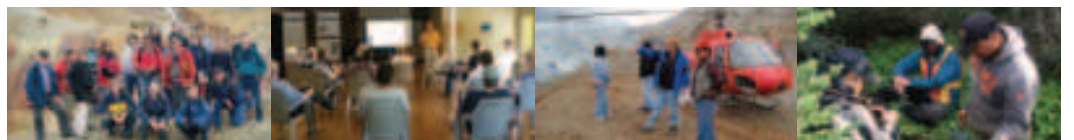
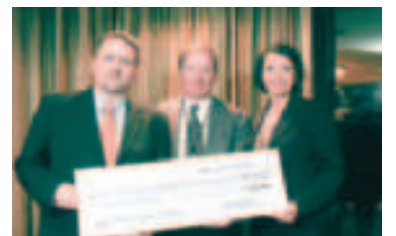
Mining companies are responding by trying to attract under-represented groups to the industry, including members of Canada's aboriginal communities, to ensure a strong provincial and national mining sector for years to come.

Seabridge is taking action by investing in local communities, including a \$100,000 contribution it recently made to the British Columbia Aboriginal Mine Training Association (BC AMTA) to help fund a skills upgrading program,

known as Pathways to Success (P2S), in three, 10-person PS2 training programs in Gitanyow, Gitksan and Tahltan communities this year.

Finding staff is already an issue for exploration and mining projects in B.C., according to Laurie Sterritt, BC AMTA's executive director. "Seabridge's contribution clearly demonstrates they understand that workforce capacity development in Aboriginal communities is a way to deliver business results," Sterritt said.

For more on the KSM Project, visit the Northwest Community College Trades Career Fair in March in Terrace; the Tahltan Central Council's youth conference in Dease Lake in April; and the Minerals North conference in Burns Lake in May. You can also drop by the KSM Project office located at 1235 Main Street in Smithers (250.847.4704). To learn more about the BC AMTA P2S program, visit www.bcamta.ca.



Learn more about the KSM Project www.seabridgegold.net community@seabridgegold.net

KSM PROJECT SEABRIDGE GOLD

Advance Public Notice Load Restrictions

In order to preserve road base strength, pursuant to Section 66 of the *Transportation Act*, and to provisions of the *Commercial Transport Act*, notice is hereby given that load restrictions may be placed on short notice in the near future on all highways within the Bulkley Stikine District, including areas from Burns Lake west to Kitwanga, and north to the Yukon border, including Atlin. Restrictions will be imposed in each service area, as conditions warrant.

The restrictions will limit vehicles to 100 per cent, 80 per cent, 70 per cent or 50 per cent of legal axle loading.

Overweight permits will not be granted and all term overweight permits are invalid for the duration of the restrictions.

Trucking and transportation companies, as well as the general public, should govern themselves accordingly.

Your cooperation in adhering to the above regulations is appreciated.

**If you normally receive bulk deliveries of water, fuel, livestock feed or other produce, please plan ahead so interruption to your deliveries will be minimized.**

Dated in Smithers, British Columbia, this 22nd day of February, 2012.

Carl Lutz, District Manager  
Ministry of Transportation and Infrastructure  
Bulkley Stikine District

**For more information about load restrictions, contact local Operations Technician Brad Boyden at 250 847-7403 or visit the Load Restrictions section of www.DriveBC.ca.**



NEWS

# Smithers on track to reduce emissions

By Dan Mesec  
Smithers/Interior News

Smithers council discussed potential future plans for reducing greenhouse gas emissions during a Committee of a Whole meeting last week that may form a constructive path to reach the town's goal of a 31 per cent GHG reduction by 2015.

Last Tuesday council reviewed the Corporate Energy and GHG Emissions Reduction Plan to decide how the town would proceed to lower emissions.

However, due to some complexities of the draft plan, it was evident council had some reservations about the most efficient direction to take.

"I think the draft has some practical implications," said Councillor Mark Bandstra. "It needs to be flushed out. But I'm open to looking at what would be

of benefit to our community, where we can improve infrastructure and reduce emissions at the same time and end up with a cost reduction to the town and the taxpayer."

The Town of Smithers initiated the project in 2008 to reduce GHG emissions by 31 per cent from 2004 levels by 2015. So far Smithers is on track to reach their goal with only three years to go.

After the meeting Councillor Phil Brienne noted there are many practical actions within the plan that can be implemented immediately, without impacting the current budget.

"The two biggest contributors are buildings and our fleet," Brienne said. "The building side was very specific in coming up with a number of practical cost savings and also emissions saving ideas.

"So things we can

do right now that aren't going to cost a lot of money."

But still council noted that despite having a detailed strategy to reduce emissions, the whole community needs to get involved to achieve a 31 per cent reduction by 2015. As Councillor Charlie Northrup put it "If we all do our little bit it makes a lot."

"I think if we're doing something the community has to understand why we're doing it," Northrup said.

"Especially if we're investing capital for a long range or five year, ten year, twenty-year return they have to be thinking the same way as us so we can do it as an entire community and just make our whole environment better."

Council also discussed potential plans on how to make use of the Gas Tax. The Gas Tax was started by the federal government in 2005

through the Union of British Columbia Municipalities. The funds are used for sustainable projects within the community such as public transit and community energy systems. However, since Smithers' roads are littered with damaging potholes, debate centred around options to address the crumbling streets.

"I think the most important thing we have to look at are our roads," Councillor Norm Adomit said. "They're getting older and older, worst shape and this winter showed it."

"The Gas Tax funds we're handcuffed, we're not allowed to use it for our own roads so we have to find an innovative way to use it for other projects and maybe we should use the money from those projects for our roads. Kind of do an exchange system."

One idea that surfaced was a possible bike

lane project. Bike lanes offer not only a sustainable form of transportation but also have less impact on ailing roads. Which if synergies can be found between the two projects, says Mayor Taylor Bachrach, it may prove to achieve a positive outcome. Reducing emissions at the same time maintaining vital road ways.

"There's a big focus on sustainability when we're talking about the Gas Tax funds," Bachrach explained. "Looking at those goals and also looking at the fact that we have a paving back-log and we need to rectify that situation so we're looking for overlap between those two goals and I think that's the win-win situation we're looking for."

**PRIME RIB Special**

LAST FRIDAY OF EVERY MONTH


*Steakhouse*  
On Main


Hours: Mon-Thurs 11-8 • Fri-Sat 11-9  
Sun 10-8 • Sunday Breakfast Buffet  
847-2828 • 1314 Main Street, across from Movie Gallery

The Interior News 250-847-3266

**SMILE FOR THE WEEK**

*"A violin is the revenge exacted by the intestines of a dead cat."*  
Ambrose Bierce

  
Tracey Turko, RD

  
Ecklands  
Denture Clinic (1997) Ltd.  
1142 Main Street, Smithers • 847-5318  
First Impressions Count

## DEVELOPING A MINING PROJECT OF MERIT

Years of hard work, expertise and resources go into designing, developing and engineering a proposed mining project to prepare it for the crucial environmental assessment (EA).

Most development projects in BC are subject to a provincial EA to determine the environmental, social and economic impacts of the development on the specific site and in the surrounding communities; about 70 per cent of those same projects must also submit to federal environmental review.

Seabridge Gold has been working for about seven years to move its KSM Project, located 65 km northwest of Stewart, BC, towards production. This work has included many years of exploratory drilling, geotechnical, engineering, environmental and socio-economic studies. The preparation for the KSM Project's EA application began in 2007.

"What's important to remember is Seabridge isn't designing the KSM Project in a vacuum," said Seabridge Gold's President, Rudi Fronk.

"We have a great team of employees, consultants and contractors working to ensure we put forward the best project plan from a scientific, technical and

economic perspective. We also benefit enormously from having an active and engaged working group."

Working groups – comprising experts from across many different fields and disciplines – are created to advise the BC Environmental Assessment Office (EAO) and the Canadian Environmental Assessment Agency (CEAA) about challenges and community concerns related to a proposed project's assessment. These groups offer advice and guidance to a project owner about the information it should collect and ways to avoid potential problems. Working groups also play an important role in helping to assess the adequacy of any proposed mitigation measures.

The KSM Project's working group includes representatives from the BC EAO, CEAA, federal and provincial government ministries and agencies (including Environment Canada, Fisheries and Oceans Canada, Health Canada, Natural Resources Canada, Transport Canada and BC's Ministries of Energy and Mines, Environment, Forests, Lands and Natural Resource Operation, Transportation and Infrastructure), the Nisga'a Nation and First Nations (the

Tahltan, Gitksan and Gitanyow), and local municipal governments, as well as representatives from the State of Alaska.

The KSM Project working group has provided input that has led to some key changes to the project design. For example, earlier this year, the project design was adjusted to reduce its environmental footprint by changing it to from an open pit to a combined open pit and underground operation. The new design also looks at a potential change in project access routes to address concerns regarding local fish.

Seabridge plans to submit its EA application later this year.

"We anticipate it'll be more than 10,000 pages long," said Fronk, "reflecting many years of hard work and Seabridge's commitment to developing a project that stands on its scientific and technical merits."



Learn more about the KSM Project

Seabridge Gold Inc.  
1235 Main Street, P.O. Box 2536,  
Smithers, BC V0J 2N0

www.seabridgegold.net  
community@seabridgegold.net  
1.250.847.4704

**KSM PROJECT SEABRIDGE GOLD**

*Beautyrest*  
by SIMMONS

**FACTORY AUTHORIZED MATTRESS SALE**

Beautyrest Studio Limited Pillow Top Queen Size  
**\$799**

1 Year NO Interest NO Payments!

IT'S NOT JUST sleep, IT'S BEAUTYREST

*Beautyrest* Highland Pillow Top Queen Size King Size \$1699  
**\$999**

*Beautyrest* Dungee Tight Top Queen Size King Size \$1499  
**\$899**

LOOK FOR THESE FEATURES

- WOOL QUILTING
- VISCO MEMORY FOAM
- SOY FOAM
- SILK QUILTING

**HOMETOWN SLEEP CENTRE**  
1073 MAIN STREET SMITHERS

Toll Free 1-800-780-9255 Phone: 250-847-4488  
Store Hours: Monday thru Saturday 10am - 6pm

VISA MasterCard



# Reconnecting kids with nature

## Nature displays, walks and talks on agenda

By Percy N. Hébert  
Smithers/Interior News

Rosamund Pojar and her allies are on a mission to re-acquaint children with nature and get their parents back out there as well.

"Kids are spending more and more time indoors," Pojar, who is a botanist by training, lamented.

"We want to get them out there and get their families out there."

To that end, Pojar has established, Connecting Kids with Nature, with the help of Clare Aries, support from the Bulkley Valley Naturalists and grants from Northface and the Driftwood Foundation.

Connecting Kids with Nature has a three-pronged approach to get children and their families back in touch with nature.

The first part of the strategy is an art show, The Fine Art of Nature, featuring artwork inspired by nature as well as hands-on items like skulls, pelts and plants.

Part of the art exhibit also includes workshops for school children and evening talks open to the public.

Pojar, who was



With summer fast approaching, kids in the Bulkley Valley will have the opportunity to re-connect with nature.

raised in Britain, where children are connected with nature early in life, said nature was part of her childhood.

"A lot of British people get that from an early age," she said. "It's part of the school program."

The second part of the strategy is to get kids outdoors in a program called Out of the Box.

The program runs from June to October and features two field trips, workshops per month.

Also, Out of the Box organizers have scheduled at least one outreach event per month to other communities in

the Bulkley Valley such as Hazelton, Houston, Kitwanga, Fort Babine and Moricetown.

To register for the field trips or workshops, sign up in May at the art gallery.

"We've received a tremendous amount of support from the community," Pojar said of the venture, adding NWCC and BC Parks and Trails have also lent their support.

The final stage of the Connecting Kids with Nature program is to raise the profile of nature and convince the city to provide space, such as at Riverside Park,

Pojar explained.

"Our ultimate goals is to have a nature house," she said.

For information

contact Pojar at 250-847-9429, or Aries at 250-847-4249.

Contributed photo

# LOCAL COMMUNITIES BENEFIT FROM MINING

Seabridge Gold's proposed KSM Project, located 65 kilometres northwest of Stewart, is a project with estimated capital costs of more than \$4.5 billion and a projected mine life of 50-55 years. If approved, the KSM project could offer significant economic and social benefit to the Province and its residents.

But what does that really mean? Big picture, it's important to remember the mining industry benefits British Columbia's economy in many ways. First, in the form of direct expenditures for goods and services, employment and tax revenues; but also indirectly, when mining companies buy goods and services from other providers, who in turn purchase inputs from other companies; or when people spend their wages on goods and services in local communities.

A PricewaterhouseCoopers LLP (PwC) report commissioned in late 2011 by the Mining Association of British Columbia (MABC) estimated that, for every dollar spent in BC's mining industry, there is about \$1.73 of total impact on the provincial economy. Direct mining expenditures in BC were about \$5.2 billion in 2010, with an additional \$3.7 billion spent in secondary and support industries and services. That's \$8.9 billion in total economic activity in BC as a result of mining.

"Mining plays an integral role in the provincial economy, contributing to the provincial labour market, government tax dollars and the quality of life in rural communities, through its support of healthcare initiatives, the arts and education" says Karina Briño, president and CEO of MABC. "The sector remains a major driver of development and sustained economic activity throughout the province, where it offers employment, education and economic growth opportunities that may otherwise be difficult to achieve and, in some cases, may not have existed."

Ian Ricketts would know. For the past two years, the General Manager at Bulkley Valley Wholesale in Smithers has been supplying Seabridge's KSM Project camps with groceries and other provisions during the field season.

"A good part of our business comes from supporting the resource sector, and companies like Seabridge Gold. Every week, from May through September, we pull together orders for several mining and exploration companies running projects camps in the northwest region. We are proud of the important role we play in supporting this industry and readily acknowledge its importance to our region's economic development."

If approved, when the KSM

Project is under construction, it will generate direct spending of approximately \$3.1 billion in the provincial economy for goods and services. At full production, the project will contribute about \$365 million per year to the provincial GDP (direct, indirect, and induced) and \$895 million per year for all of Canada. That adds up to an estimated \$45 billion in total GDP for Canada over the life of the proposed project.

Through its exploration stage the KSM Project is contributing to the economy. Since acquiring a 100 percent stake in the project in 2006, Seabridge has spent \$110 million in exploration drilling, engineering and environmental studies to advance the project through the Environmental Assessment process. The estimated budget for 2012 is \$25 million and approximately 80 percent of spending to date has been in local communities across BC.



Learn more about the KSM Project

Seabridge Gold Inc.,  
1235 Main Street, P.O. Box 2536,  
Smithers, BC V0J 2N0

www.seabridgegold.net  
community@seabridgegold.net  
1.250.847.4704

**KSM PROJECT**  
SEABRIDGE GOLD

Celebrate · Remember · Fight Back

**ENTERTAINERS!**  
You're invited  
to participate in the  
2012 Relay for Life.

Help us fight cancer by  
making beautiful music,  
amazing artistry, wonderful  
demonstrations of  
athleticism, comedy  
and more.

**From 1pm  
May 26th**

For more info contact the Smithers' office  
250 847 0230  
smithersrelay@bc.cancer.ca

**CHECK US OUT ONLINE**  
[interior-news.com](http://interior-news.com)

Together with God and four precious children, Cory (Amanda, Kiana and Daniel), Lucas, Devon and Shawni whom we adore and love endlessly, we begin a new chapter ~ cherishing memories and making precious new ones. Thank you to three delightful young ladies ~ Em, Jes and Linds for sharing in our magical mexican adventure! To our family for hosting a lovely reception upon our return, thank you so much! We are blessed with family and friends sharing in our happiness, shown in countless ways ~ thank you. Taylor and Claudia



## Conference dispels myths about HIV

By Percy N. Hébert  
Smithers/Interior News

The Dze L K'ant Friendship Centre hosted a conference on HIV/AIDS awareness in Moricetown recently in the hopes of stemming the tide against the disease in First Nations communities.

"The prevalence of HIV in First Nations communities in northern BC is growing at a much faster rate than in non-aboriginal communities," program director with the Dze L K'ant Friendship Centre, Genevieve Poirier said.

"Especially among people aged 25 and under, particularly women."

The conference focused on several key areas, including education on transmission of the

**"They [students] think oral sex is safe sex, but it's possible to contract HIV through oral sex."**

**Shannon Froehlich, positive prevention coordinator with Positive Living North Society**

HIV virus, around which First Nations youth have little knowledge.

"The biggest myth is you can get HIV through saliva or from hugging," Shannon Froehlich, positive prevention coordinator with Positive Living North Society in Prince George, said.

"They also don't understand that it's 100 per cent preventable."

Froehlich also visits schools to discuss HIV and finds students are often caught by surprise their behaviour

puts them at risk of contracting HIV.

"Especially when we say HIV can be contracted through oral sex," Froehlich explained.

"They [students] think oral sex is safe sex, but it's possible to contract HIV through oral sex."

Poirier also visits schools, teaming up with Marilyn Morrison who delivers a HIV 101 course in regional schools.

In addition, Poirier has all kinds of resources available for anyone wanting more information, including information

from the BC Centre for Disease Control, the Aboriginal AIDS Task Force, the Front Line workers and the Positive Living North Society which has an office in Smithers.

Another important topic covered by the conference is the stigma and discrimination attached to individuals with HIV/AIDS.

"Many people with HIV are discriminated against, by their families, by their communities when

they come home," Poirier said.

The attitudes towards people with HIV is the same in aboriginal communities as in non-aboriginal communities, Froehlich said, but explained because aboriginal communities tend to be much smaller, it is more difficult for someone with HIV to live in a community without everyone knowing about their disease.

See HIV on page A14

Happy 40<sup>th</sup> Birthday  
Luella



### HELP FIGHT CYSTIC FIBROSIS



Canadian Cystic  
Fibrosis Foundation

1-800-378-CCFF

www.cysticfibrosis.ca

Advertising space donated by The Interior News

## TAKING THE TIME TO GET IT RIGHT: DESIGNING THE KSM PROJECT

**The KSM Project is a proposed gold/copper mine, located 65 kilometres northwest of Stewart. If approved, the mine could become an important economic anchor in northwest BC and a source of four important minerals we use in our daily lives.**

The average home contains more than 400 pounds of copper – mostly in the wiring and pipes that keep the power on and the water flowing. Our vehicles, computers, cell phones and countless other items we use on a daily basis contain many different metals and minerals, including gold, silver and copper. These are all found at the proposed KSM Project where the proven and probable mineral deposits total 38.2 million ounces of gold; 9.9 billion pounds of copper; 191 million ounces of silver; and 213 million pounds of molybdenum.

A lot of effort goes into planning a mine. Originally discovered in the 1960s, Seabridge has been working since 2006 on the KSM Project design, doing exploratory drilling, geotechnical, engineering, environmental and socio-economic studies; and gathering input from communities and groups who have an interest in the project.

"Our aim from the beginning has been to work collaboratively to forward a project which reflects public input prior to submitting our permit applica-

tions for review by provincial and federal regulators," says Rudi Fronk, Seabridge Gold's President and CEO. "Six years of work and community feedback have gone into designing a mine plan for KSM that is both environmentally responsible and economically feasible."

The proposed KSM mine gets its name from three of the four deposits found at the site: Kerr, Sulphurets and Mitchell (the other deposit is called Iron Cap). These deposits will be mined in a combined open pit

trucked offsite for further refinement. The location of roads to and from the mine site and processing plants were selected based on feedback from Seabridge's Working Group and Aboriginal partners.

The remaining ground-up ore with the minerals removed – the 'tailings' – are pumped to a nearby tailings management facility. Here, dams will be built to contain the tailings. There will also be a special lined pond in the centre of the tailings management facility where some of the tailings will be stored. This is the first lined pond in British Columbia; it is not required for the project, but Seabridge is committed to upholding high environmental standards in its mine design.

Other project elements include water diversion tunnels to divert fresh water and runoff

away from the pits and mine site; water treatment facilities, to collect and treat water running off the pits and the RSFs; two camps to house employees; and places to store equipment, explosives and supplies in various locations across the site.

The estimated capital cost of the proposed KSM Project is 5.3 billion dollars, providing annual employment for 1,100 during construction and 930 during operation. The KSM Project will be going through the Environmental Assessment process this fall and, pending approval, will go into construction in 2014.



B.C. Children's Hospital

# BBQ

Friday, June 1st, 11-2 p.m.

Royal Bank, Smithers

Hamburger & Pop – \$6

Hot Dog & Pop – \$4

or sold separately

All proceeds to BC Children's  
Miracle Network Telethon

We can't treat children like adults,  
please donate

Space donated by The Interior News

Learn more about the KSM Project

Seabridge Gold Inc.,  
1235 Main Street, P.O. Box 2536,  
Smithers, BC V0J 2N0

www.seabridgegold.net  
community@seabridgegold.net  
1.250.847.4704

**KSM PROJECT**  
SEABRIDGE GOLD

## COMMUNITY

# Women's convention provides heartfelt inspiration



**VIEW FROM  
THE PORCH**  
Lorraine Doiron

Creek, B.C.

Each District took turns offering snacks from their areas: Bear pepperoni (Smithers) fruit, grain breads, crackers, wild berry preserves.

Inspirational speakers: Peter Legge, internationally acclaimed professional speaker; Linda Wegner, workshop consultant with the Agricultural Institute of Management in Saskatchewan.

Workshops to choose from, day tours of the area, time to attend the Sidney Summer Street Market, a grand finale - salmon dinner at Sooke along with entertainment being a loggers' show of skills.

The fitting windup to the event was a Red Dress Gala, recognizing the symbol of the Heart and Stroke Foundation's *The Heart Truth Campaign*, a sea of red, truly "heart" warming.

68 B.C. registrants attended this Convention, (Fay Van Horn, Glenwood Womens' Institute, Smithers and Wanda Mason, South Hazelton Wom-

ens' Institute from our area) for a total of 260 people from across Canada.

The 2015 convention is in New Brunswick.

A funny story: two women from B.C. have a memory from the convention different from all the rest.

They were staying at the Best Western and were awakened just before midnight by a noise.

They sat up in

bed to see a naked man coming in their window.

When they asked him what he was doing, he replied, "Sorry, wrong room," and strolled across to the door, exiting into the hall.

A tale to carry home.

Youth Book Club at the Library.

July book: *The Lion, the Witch and the Wardrobe* (pre-teens, teens).

Discuss the book, play fantasy games, watch the movie.

Wednesday evenings, starting July 4.

August book: *The Hunger Games* (teens). Discuss the book, design your own world, watch the movie.

Wednesday evenings, starting August 1.

A workshop: Mountain Biking.

An introduction to mountain biking - choose a bike, main-

tain it, find a trail that will suit your skill level.

Monday, July 9, 7pm.

Programs are free, more information: 250-847-3043.

Ant season, pesky critters.

Put small piles of cornmeal where you see ants.

They eat it, take it home but can't digest it, they die.

May take a week or so, especially if it

rains (been doing that a lot lately) but it is supposed to work.

No poison to threaten pets, small children.

For those who like strange words like I do, check these two out: pescatarian and sardanapalian.

Never mind the dictionary, I did not find them in there.

Closing with: *There are no shortcuts to any place worth going.*

- Beverly Sills

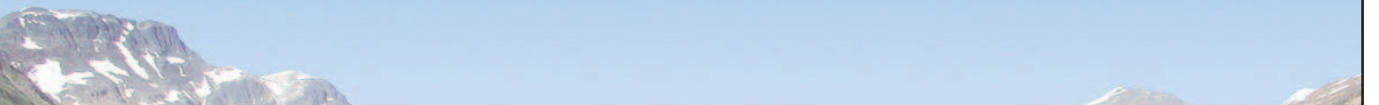
The National Convention of Federated Women's Institutes of Canada was held June 12-16 in Sidney, B.C.

Women gathered for this triennium, themed *Coast to Coast - Women's Institute Alive and Well*.

An emphasis on heart and stroke focused on women's heart health with a unique challenge to Women's Institute members to walk across Canada, without leaving their community, by using a pedometer to track their steps during 2011.

The winner was Judy Watson of Rock

## LIFE IN AN EXPLORATION CAMP



A few weeks ago, Seabridge Gold opened its exploration camp at the company's KSM Project, located 65 kilometres northwest of Stewart. The KSM camp is the base from which Seabridge conducts the seasonal onsite exploration, geotechnical, engineering and environmental work for its proposed gold, copper, silver and molybdenum mine.

Seabridge has operated the camp for the past seven years; each year, the focus of the work is slightly different.

This year, Seabridge is finalizing its mine design plan and preparing to submit its environmental assessment and permit applications in November 2012, so camp and field activities are focused on supporting these objectives.

Since mid-May, about 30 people have been living in camp. By the end of June, there will be approximately 50 people as different work projects ramp up. Most are employed by the technical experts and companies Seabridge has hired to help design and develop the proposed mine.

*"What I like most about my job is seeing new country and travelling to places few get to see."*

- Tim Dodd, Geologist

Already this year, the camp has been home to geologists, drillers, mechanics, pad builders, pilots, cooks, carpenters, labourers, environmental scientists and technicians. These men and women come from across BC to live and work on the KSM Project, sometimes for a few weeks at a time, from places like Dease Lake, Hazelton, New Aiyansh, Prince Rupert, Smithers, Telegraph Creek, Terrace and Vancouver.

With so many people, each with different roles and responsibilities, it's hard to describe a typical day in camp because it really does depend on what you do.

If you're a cook, you're up at 4 a.m. getting breakfast ready for everyone. The rest of the camp residents are usually up by 6 a.m., with time to eat, pack a lunch and head out to catch the helicopter to work; many are back by 5 p.m., in time for supper.

Tim Dodd is one of the project geologists working on the KSM Project. Project geologists typically work 12-hour days, with job duties that include core logging, drill hole spotting, sampling core, visiting drill rigs, mapping and field work. "What I like most about my job is seeing new country and travelling to places few get to see. I like the challenge and reward of deciphering the geological puzzles of the earth that were created over millions of years. And of course I love working outdoors," he shares.

Life in camp can be tough so Seabridge makes the KSM camp as comfortable as possible by providing things like internet access, satellite radio and phone booths. This means that when people aren't working, they have the option of connecting with their families, catching up on their emails and paper work, or just heading into the common areas to watch movies or play cards or chess.

"After a long day working outdoors, it's good to be able to come back to camp to good food, the chance to see what's going on in the outside world, or just to chill out in a comfortable environment," Tim adds.



**"A WORLD OF OPPORTUNITIES  
WITHIN OUR REGION"**

37, 3<sup>rd</sup> Avenue, PH: 250-692-3195  
PO Box 820, TF: 800-320-3339  
Burns Lake, BC V0J 1E0 FX: 250-692-3305  
www.rdbn.bc.ca E-MAIL: inquiries@rdbn.bc.ca

### MEETING SCHEDULE 2012

**June 28, 2012** .....RDBN Board Meeting/SNRHD Meeting  
**July 19, 2012**.....RDBN Board Meeting/Committee Meetings/SNRHD Meeting  
**August 16, 2012** .....RDBN Board Meeting/Committee Meetings/SNRHD Meeting  
**September 6, 2012**.....RDBN Committee Meetings

Meetings tentatively commence at 10:30 a.m. please call (250) 692-3195/1-800-320-3339 for further information

**PUBLIC IS WELCOME**

**Have a safe  
& fun  
Canada  
Day!**

**Learn more about the KSM Project**

Seabridge Gold Inc.  
1235 Main Street, P.O. Box 2536,  
Smithers, BC V0J 2N0

www.seabridgegold.net  
community@seabridgegold.net  
1.250.847.4704

**KSM PROJECT  
SEABRIDGE GOLD**

NEWS

# Search called off

## Searchers find no evidence of missing filmmaker from Ohio

On Friday, the New Hazelton RCMP and BC Search and Rescue had still found no sign of Warren Andrew Sill, a 26-year-old filmmaker from Ohio.

"The Unified Command Team, comprised of the the New Hazelton RCMP, BC SAR with the support from the ND RCMP Air Services and RCMP Police Dog Services are suspending the current search effort," New Hazelton RCMP Sargent Jeff Pelley said in a press release.

"Further search efforts will be

considered should further information be received that may assist in identifying other possible search areas."

Sill told family he was going into the woods for a few days on July 4th.

Police grew concerned on July 10 when a search of his vehicle produced all the equipment needed for camping.

Sill's sleeping bag, tent and camping stove still remained in the vehicle, all of which were necessary to survive in the rugged mountain

terrain RCMP said.

Furthermore, police learned Sill was not a seasoned outdoors man.

Anyone that has any information or has seen Sill who is described as 5'10,

approximately 180 lbs medium build with short dirty blond hair is asked to contact the New Hazelton RCMP detachment at 250-842-5244 as the investigation will remain ongoing.

Call to Register Ph: 250.847.9429 or 4249

**OUT OF THE BOX**  
Connecting Kids with Nature  
Free Field Trips for Youth  
Wed Aug.6<sup>th</sup>, Riparian Insects w. Clare Aries  
Late August , Fun With Fish T.B.A  
September to follow

Space donated by The Interior News

Add your event to our Community Calendar at [www.interior-news.com](http://www.interior-news.com) or by emailing [laura@interior-news.com](mailto:laura@interior-news.com)

# Seabridge Targets Mid-November to Submit KSM EA Application

Seabridge Gold's proposed KSM Project – located 65 kilometres northwest of Stewart, British Columbia – began its journey through BC's Environmental Assessment (EA) process more than four years ago. The EA process allows the government to review projects to determine their environmental, social and economic impacts. It's also a way to ensure the issues and concerns of the public, Treaty and First Nations, local communities, other stakeholders and government agencies are considered.

For most major mining developments, including the KSM Project, a joint provincial and federal EA is required by the BC Environmental Assessment Office (BC EAO) and the Canadian Environmental Assessment Agency (CEAA). This combined review enables the two agencies to follow a single review process while retaining their respective decision-making powers.

The EA process has two stages: the pre-application stage, where the KSM Project is today, and the application review stage, which will begin when Seabridge submits its EA application (expected to be in November).

Many things happen during the pre-application phase: in a nutshell, it's the time when a proponent (Seabridge) does the work necessary to develop its project, from design and engineering work to conducting all the studies necessary to understand the environmental, social and economic impacts of a project. These studies examine a range of subjects including water quality, fish and aquatics, vegetation, wildlife, archaeology, land use, and regional social and economic impacts

But it's not just about conducting research and fieldwork. In addition to designing a project that reflects the findings of the many scientific, technical,

and cultural studies completed over the past four years, the KSM Project also reflects the feedback from Treaty and First Nations, the project's Working Group, and input provided by members of local communities who've attended events, meetings, community summits and career fairs to learn more about Seabridge Gold and the KSM Project.

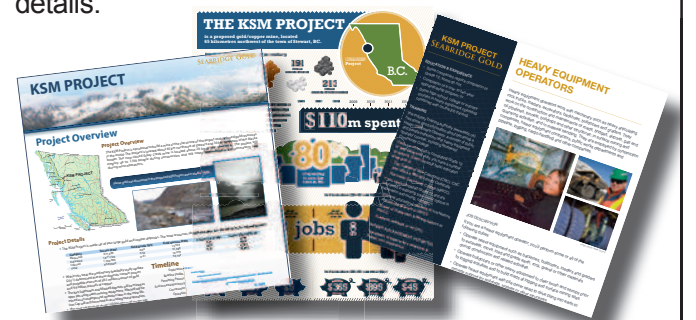
Over the course of the pre-application phase for the KSM Project, Seabridge has held more than 220 community workshops, conducted 16 site tours, hosted 28 public forums and workshops and met frequently with aboriginal and non-aboriginal groups. Then, last year, the company opened a project office in Smithers, BC, for members of local communities interested in learning more about KSM to visit. And in early July, Seabridge launched a KSM Project website ([www.ksmproject.com](http://www.ksmproject.com)) with the goal of making information about

the project accessible to everyone, irrespective of location. The site provides access to maps and information materials about the project; answers some of the most frequently asked questions; provides information about careers in mining; and so much more.

Seabridge Gold continues to be committed to sharing information about the KSM Project. More meetings and events will take place in northwestern BC communities over the coming months; be sure to check the calendar of events on [www.ksmproject.com](http://www.ksmproject.com) for more details.



Three local residents – Jessy, Taryn and Elizabeth – work in Seabridge's Smithers office.



Learn more about the KSM Project

Seabridge Gold Inc.  
1235 Main Street, P.O. Box 2536,  
Smithers, BC V0J 2N0

[www.ksmproject.com](http://www.ksmproject.com)  
[ksm\\_community@seabridgegold.net](mailto:ksm_community@seabridgegold.net)  
1.250.847.4704

**KSM PROJECT**  
**SEABRIDGE GOLD**

## Telkwa

### Notice of Public Hearing

NOTICE IS HEREBY GIVEN that the Board of Variance for the Village of Telkwa will hold a Public Hearing in the Village Office Council Chambers at 1415 Hankin Avenue, Telkwa, BC, on August 7, 2012 commencing at 7:00 pm, under the provisions of the *Local Government Act*, to consider two (2) Development Variance applications respecting Zoning Bylaw No. 614, 2011 which include:

#### Development Variance #1

That the owner of property legally described Lots 15 and 16, Block 13, Section 35, Plan 817 requests a variance to change the setback at the rear property line from 3 metres to 1.2 metres and to change the setback on the alley side of the property line from 1.5 metres to .6 metres.

#### Development Variance #2

That the owners of property legally described as Lot 3, District Lot 415, Land District 14, Plan 9396, except Plan PRP 14514 request a variance to change the fence height from 1.2 metres to 1.8 metres.

Maps of the proposed developments variances are posted at the Village of Telkwa Offices.

At this Public Hearing all persons who deem their interest in property to be affected by the proposed bylaws shall be afforded a reasonable opportunity to be heard or to present written submissions respecting these matters. Written submissions to be considered at the Public Hearing must be received at the Village Office by 4:30 pm on August 3, 2012.

Alfred Reutelsterz,  
Director of Public Works/Engineering

### No More Backyard Dogs



You see a dog tied day after day to a back porch or fence, lying lonely on a pad of bare, packed dirt. Abandoned, fed sometimes, mostly forgotten but chained up, it cannot move to comfort, shelter or companionship. Being alone goes against the dog's most basic instinct.

**A sad, lonely dog tied out back only suffers.**



[www.nwas.ca](http://www.nwas.ca) info@nwas.ca

Advertising space donated by The Interior News

## Sports

# Smithers oldest downhill bike race, Huckin' Eh!

By Dan Mesec  
Smithers/Interior News

It was a slippery ride down Huckin' Eh Sunday morning, but by the time all the riders were in the trail had dried up and the sky had opened, bringing the longest running downhill race in the Bulkley Valley to a close.

"This race has a bit of history for rain, the last three years we've had rain but we got pretty lucky today," organizer, Peter Krause said.

"It spit down a little bit but it's dried up already for the finish. Things went pretty smooth, no major injuries."

Like many of this season's races, the field was pretty large, attracting over 30 riders, including a group from Burns Lake.

Huckin' Eh originally ran down Hudson Bay Mountain and then switched over to Anti-flow and for the past three years it's run down Huckin' Eh.

"Huckin' Eh is a bit of a smoother trail so a bit more versatile for everyone to ride and have more participation," Krause said.

"It keeps people motivated to keep riding."

Matt Kilback, who

rode to a second-place finish said all trails are different but the key to successfully riding them all is to always have a smooth ride.

"It's definitely a fast course, a bit smoother than the Piper Down, not a lot of technical riding needed," Kilback said.

"A clean run and you're there."

Although there were no major injuries during the race, Logan Malkow definitely had a hard spill but still placed first in the men's division.

"The trail is in great shape a little bit of rain helped keep the trail sticky and tacky," Kilback said.

"There are a lot of good riders here but I just tried to do it just the same as all rides nice and clean and the time will be there and if Logan won kudos to him, that's awesome."

In the women's division Gabe Newman finished first with a time of 4:34, followed by Tashi Newman with a time of 5:07.

Elise Dube placed third with a time of 5:26 with Patti Dube on her heels at 7:16 in fourth.

Ryan Press took first in the Masters division with a time of 4:19 followed by Peter Krause in second

with a time of 4:59. Pat Dube finished in third with a time of 5:06 followed by Chris Howard in fourth at 5:24.

Malkow and Kilback placed first and second respectively in the open division, with Dave Percy only two-seconds behind in third with a time of 4:10.

Kristoff Aarmoen finished first in the 16 to 18 men's division

with a time of 4:29 followed by Zachary Peterson in second at 4:42 and Andre Dube in third at 4:49.

Heiko Krause placed first in the Junior division with a time of 5:48 followed by Aidan Press in second with a time of 7:36.

Kilback and Tashi Newman both placed first in the chain-less race with times of 4:18 and 5:23 respectively.



Logan Malkow races down Huckin' Eh during the annual downhill race on the lower reaches of Hudson Bay Mountain.

Malkow placed first despite crashing in the second, chain-less leg of the race.

Dan Mesec photo

## WHAT HAPPENS AFTER AN EA APPLICATION IS SUBMITTED

**Seabridge Gold is frequently asked what happens after it submits its Environmental Assessment (EA) application for the KSM Project this fall.**

First, it's important to remember that the KSM Project is undergoing a joint federal and provincial environmental review, which is typical for major mining projects. While the Canadian Environmental Assessment Agency (CEAA) and the BC Environmental Assessment Office (BC EAO) assess many similar areas, their legislative focus is different.

### Screening period

Under the joint review, Seabridge will submit one combined EA application to the BC EAO and the CEAA. The BC EAO and CEAA then conduct an initial screening to ensure the application is complete and that it addresses the information required in the Application Information Requirements (AIR) or terms of reference.

### Application reviews

The application review period begins once the government agencies agree the application is complete and has all the necessary project information. The application includes a detailed project description, environmental baseline studies (soils, vegetation, water, wildlife, fish, aquatics, climate, air and noise, archaeology and traditional use studies among others), as well as predicted impacts of the KSM Project on the environment (physical and social) and the actions Seabridge has taken to avoid, prevent or mitigate potential impacts. During this time, the BC EAO, CEAA, Provincial and Federal regulators, Treaty and First Nations and general public review the application.

The BC EA review period is 180 days and includes 30 days for the general public to review the application and provide comments to the government. The application is on the BC EAO website during

the review period. Under the CEAA review, the application is posted to its website and public comment periods are available.

The EAO and CEAA will each complete a report documenting their respective findings from the application, including how project concerns have been addressed and whether there are any outstanding issues. Assessment reports are then posted on each of the websites. Seabridge is actively involved in these reviews, presenting aspects of the Project and answering questions from reviewers.

### Minister's decision period

The BC EAO and CEAA forward the assessment reports to their respective ministers, along with a recommendation from the EAO about whether or not to issue an EA certificate. The EAO ministers have 45 days to make their decision. The CEAA Minister of the Environment makes a decision within a similar time period.

### Once a decision is made

There's a common misperception that once an EA certificate is granted, a company can immediately begin building a mine. That's not the case. The Environmental Assessment is a systematic analysis and evaluation of the impacts of a proposed project in terms of its environmental, economic and social sustainability. Once an EA certificate is granted, a proponent then has to apply for the necessary permits, licenses and land-use approvals (federal and provincial) in order to build and operate the mine.

### Learn more about the KSM Project in person

Seabridge will be holding community open houses in Smithers (September 11), Terrace (September 18) and Stewart (October 18) to share more information about the KSM Project. For more information, visit the News-Events on [www.ksmproject.com](http://www.ksmproject.com) and look for our ads in upcoming community newspapers.



Learn more about the KSM Project

Seabridge Gold Inc.  
1235 Main Street, P.O. Box 2536,  
Smithers, BC V0J 2N0

[www.ksmproject.com](http://www.ksmproject.com)  
[ksm\\_community@seabridgegold.net](mailto:ksm_community@seabridgegold.net)  
1.250.847.4704

**KSM PROJECT**  
**SEABRIDGE GOLD**

CONTESTS PRODUCTS STORES FLYERS DEALS COUPONS  
BROCHURES CATALOGUES CONTESTS PRODUCTS STORES  
FLYERS DEALS COUPONS BROCHURES CATALOGUES

**flyerland.ca**

Your Trusted Source

We stand behind the accuracy of our content which is why retailers use us as their partner.



Just a few of our featured retailers

**flyerland.ca**  
SAVE TIME. SAVE MONEY.



# HOSPITALITY MATTERS . . . EVEN IN THE MIDDLE OF NOWHERE

Ask Vern Sampson about his culinary career working in the minerals and mining sector and you can't help but smile. Vern began his career on the Galore Creek Project; today, he's the head chef and first aid attendant at Seabridge Gold's KSM Project camp, where he's worked for the past three years. He's employed by Spatsizi Remote Services Corporation (SRSC), a wholly owned subsidiary of the Tahltan Nation Development Corporation (TNDC) that provides catering and camp operation services at remote industrial sites. SRSC is a TNDC joint venture with Sodexo, an international food and facilities management company.

"I've been cooking in camps for six years now, and intend to continue until someday down the road I open my own restaurant in Hazelton, where I was born and raised," says Vern. "I enjoy this work because I get satisfaction from seeing others enjoy my food. No matter how hard my day is, it makes it all worthwhile to hear the crew say thank you for the good meal."

Vern completed two years of culinary training at Northwest Community College in Terrace in 2007 and in 2010, became Red Seal-certified. A typical day for Vern at the KSM Camp begins early with the daily baking. He then prepares lunch for the people working in camp – including the maintenance guys, core cutters, pilots, engineers and office staff – and starts preparing for the evening meal. When he's not cooking or baking, he's organizing weekly menus and grocery orders. "I have to be careful not to forget anything because we're in the middle of nowhere and it's extremely difficult and expensive to fly our food in."

Edward Van Mierlo is the Chief Operating Officer of SRSC. "Communication skills, a great attitude, a willingness to learn, and commitment are skills and attributes we look for in SRSC employees," says Edward. "When we hire for smaller exploration and

development camps, like Seabridge's KSM Camp, we're looking for versatile individuals with expertise in many different areas. We also look for people with the potential to grow."

Edward knows a thing or two about career growth. He used to be a camp chef at the now-closed Eskay Creek Mine, before accepting a job with TNDC in 2005 to manage SRSC. He also understands what it takes to be successful.

"Partnerships are critical in this business. Our joint venture with Sodexo enables us to develop our people and access the capacity we need to keep our clients satisfied. And we value the work we do with exploration and development projects because it allows us to begin building strong, long-term relationships. We've worked with Seabridge for four seasons now, and have developed mutual trust and understanding about what is required for us to be successful together. That's invaluable in a true partnership."

"In addition to developing great working relationships with industry, what I enjoy most about the work I do is finding employment for members of the Tahltan Nation and other local First Nations," Edward continues. "Over the past few years, year-round employment has been limited in our region, and so seeing people succeed and develop careers in the hospitality industry is really motivating."

Seabridge has spent more than \$125 million in exploration, engineering and development work to move the proposed KSM Project towards production. Approximately 80 percent of this spending has been in local communities, where Seabridge is committed to creating economic opportunities, developing local people and building partnerships with local businesses.

*Read Vern's story in full on the **KSM Project website.***



*Vern Sampson, making dinner at KSM Camp.*



**Learn more about the KSM Project**

Seabridge Gold Inc.  
1235 Main Street, P.O. Box 2536,  
Smithers, BC V0J 2N0

www.ksmproject.com  
ksm\_community@seabridgegold.net  
1.250.847.4704

**KSM PROJECT  
SEABRIDGE GOLD**

# ON THE ROAD ACROSS THE NORTHWEST

The Seabridge Gold team attended 13 events in 37 days this fall to talk about the KSM Project in local communities across the northwest.

First stop was Smithers on September 11, to provide Mayor and Council with a KSM Project update and opportunity for questions. That same night, Seabridge hosted an Open House at the Northwest Community College for the public to come and learn about KSM and – if it's approved – what it will mean for Smithers and its surrounding communities.

A few days later (following a two-day technical working group meeting in Smithers with Provincial, Federal, First Nations and Nisga'a representatives), it was like déjà vu as the team rolled into Terrace to meet with Terrace's Mayor and Council, followed by an evening Open House at the Waap Galts'ap Community House at Northwest Community College's Terrace campus.

"One of the things we like about meetings like these is they give us an opportunity to hear directly from communities about what residents think about the KSM Project," says Elizabeth Miller, Seabridge's Manager, Environmental Affairs, who works in the KSM Project office in Smithers. "The most frequent comments we hear at every event relate to jobs and training, and how people can prepare for employment opportunities if mining projects like KSM are approved."

Miller continues, "There are more than 120 different occupations to choose from in mining which means jobs to suit many, at every skill level. If KSM gets approved, we'll be able to start hiring people.

But that's still at least a couple of years down the road, so we've created information about jobs in mining to help people understand what's involved in the work, and what skills training they'll need to do in order to be prepared when the opportunities come up."

On October 14, Miller and her colleagues headed north for two days of community information sessions in Telegraph Creek, Dease Lake and Iskut.

Then, on October 17 back in Smithers, Brent Murphy, Seabridge's VP, Environmental Affairs was part of a panel discussion on mining development at the Regional District of Bulkley-Nechako Business Forum. The next day, Murphy headed to Stewart to meet with the Mayor and Chief Financial Officer, while Miller presented at the Annual Gitxsan Summit in Hazelton and then hopped in the car to drive to Stewart to meet up with her colleagues for an evening Open House at the Rec Centre.



"It was a tiring few weeks and a lot of driving, but was very worthwhile," says Miller. "Many people across northwestern BC have some kind of connection to mining – because they work or have worked on projects, or because their friends and family are involved with the industry in some way. On the road, we get to share our stories about working in the industry, as well as information about KSM, and we get to hear other people's stories too."

**To access information about careers in mining, visit [www.ksmproject.com/project/working-at-ksm/](http://www.ksmproject.com/project/working-at-ksm/).**



**Learn more about the KSM Project**

Seabridge Gold Inc.  
1235 Main Street, P.O. Box 2536,  
Smithers, BC V0J 2N0

[www.ksmproject.com](http://www.ksmproject.com)  
[ksm\\_community@seabridgegold.net](mailto:ksm_community@seabridgegold.net)  
1.250.847.4704

**KSM PROJECT  
SEABRIDGE GOLD**