

APPENDIX G

CONSTRUCTION SCHEDULE AND LOGISTICS

Appendix G1

Construction Schedule

Activity ID	Activity Name	Orgn Durn	Start	Finish	2011	2012	2013	2014	2015	2016	2017	2018	2019	2020	2021	2022	2023	2024
					Q	Q	Q	Q	Q	Q	Q	Q	Q	Q	Q	Q	Q	Q
KSM PROJECT PFS UPDATE 2012					15-May-12													
MILESTONES					15-May-12													
General Milestones					15-May-12													
M1010	Pre-Feasibility Study Update Complete	0	15-May-12	30-Apr-19	May-12*	◆ Pre-Feasibility Study Update Complete												
M1030	Start Early Engineering Phase 1	0	02-Jan-13*		02-Jan-13*	◆ Start Early Engineering Phase 1												
M1060	Mobilize Site Construction Program	0		31-Jan-13	31-Jan-13	◆ Mobilize Site Construction Program												
M1040	Award EPCM Contract	0	03-Mar-14			◆ Award EPCM Contract												
M1020	Complete Feasibility Study	0		31-Mar-14		◆ Complete Feasibility Study												
M1050	Complete Detailed Engineering Phase 2	0		30-Apr-15		◆ Complete Detailed Engineering Phase 2												
Access Milestones					23-Oct-13													
M1140	Temporary Construction Camps # 1 Granduc Operational	0	23-Oct-13		23-Oct-13	◆ Temporary Construction Camps # 1 Granduc Operational												
M1100	Mobilize Glacier Road "B" to Ted Morris Creek - 2014/15	185	24-Oct-13	28-Apr-14														
M1141	Temporary Construction Camps # 3 Eskay Creek Operational	0		03-Oct-14		◆ Temporary Construction Camps # 3 Eskay Creek Operational												
M1071	Upgrade Eskay Creek Access Road to Camp #3 Location	0		20-Feb-15		◆ Upgrade Eskay Creek Access Road to Camp #3 Location												
M1142	Temporary Construction Camps # 8 Unuk North Side Operational	0		06-Mar-15		◆ Temporary Construction Camps # 8 Unuk North Side Operational												
M1143	Temporary Construction Camps # 11 Unuk South Side Operational	0		21-Mar-15		◆ Temporary Construction Camps # 11 Unuk South Side Operational												
M1121	Construct Treaty Creek Bell Irving Bridge	153	28-Oct-14	31-Mar-15														
M1110	Mobilize Glacier Road "B" to Ted Morris Creek - 2015/16	233	06-Sep-14	28-Apr-15														
M1130	Construct Treaty Creek Marshalling Yard	0		26-Sep-15		◆ Construct Treaty Creek Marshalling Yard												
M1120	Treaty Creek Access Road to Saddle/TMF/Plant Site	454	28-Aug-14	26-Nov-15														
M1080	Construct Coulter Creek Access Eskay to Unuk River Complete	0		23-Jan-16		◆ Construct Coulter Creek Access Eskay to Unuk River Complete												
M1153	Temporary Construction Camps # 7 Unuk North Side Operational	0		31-May-16		◆ Temporary Construction Camps # 7 Unuk North Side Operational												
M1090	Construct Coulter Creek Access Unuk River to Mine Site Complete	0		28-Jun-16		◆ Construct Coulter Creek Access Unuk River to Mine Site Complete												
M1070	Upgrade Hyw 37 Including Bridges (Sub Contracts) - Complete	0		05-Nov-18		◆ Upgrade Hyw 37 Including Bridges (Sub Contracts) - Complete												
Mine Site Milestones					01-Aug-14													
M1200	Start Mitchell Twinned Diversion Tunnel (MDT)	0	01-Aug-14		01-Aug-14	◆ Start Mitchell Twinned Diversion Tunnel (MDT)												
M1180	Start Mitchell - Teigen Twinned Tunnel (MTT) - Mine Site Heading North	0	01-Sep-14		01-Sep-14	◆ Start Mitchell - Teigen Twinned Tunnel (MTT) - Mine Site Heading North												
M1160	Temporary Construction Power Operational	0		18-Oct-14		◆ Temporary Construction Power Operational												
M1210	Start McTagg Twinned Diversion Tunnel (MTDT)	0	02-Jan-15		02-Jan-15	◆ Start McTagg Twinned Diversion Tunnel (MTDT)												
M1230	Water Treatment Plant Phase 1 Complete	0		25-Sep-15		◆ Water Treatment Plant Phase 1 Complete												
M1150	Access Roads Complete to all Major Areas	0		06-Jun-16		◆ Access Roads Complete to all Major Areas												
M1231	Water Treatment Plant Phase 2 Complete	0		28-Sep-16		◆ Water Treatment Plant Phase 2 Complete												
M1310	Mine Truckshop Complete	0		31-Oct-16		◆ Mine Truckshop Complete												
M1300	Mitchell Site 350 Person Permanent Camp Complete	0		27-Dec-16		◆ Mitchell Site 350 Person Permanent Camp Complete												
M1240	Water Storage Dam Operational	0		16-Jun-17		◆ Water Storage Dam Operational												

- Remaining Work
- Preliminary Longest Path
- ◆ Milestone
- Summary

SEABRIDGE GOLD INC.
EPCM IMPLEMENTATION SCHEDULE LEVEL 1 - Summary by Major Areas
PRE-FEASIBILITY STUDY 2012
DD 30-Apr-12

Date	Revision	Checked	Approved
12-Jun-12	1252880100 - EPCM Schedule L1 (IFR)	E. Cori	

SEABRIDGE GOLD

Activity ID	Activity Name	Orgn Durn	Start	Finish	2012				2013				2014				2015				2016				2017				2018				2019			
					Q3	Q4	Q1	Q2	Q3	Q4	Q1	Q2	Q3	Q4	Q1	Q2	Q3	Q4	Q1	Q2	Q3	Q4	Q1	Q2	Q3	Q4	Q1	Q2	Q3	Q4	Q1	Q2	Q3	Q4		
KSM PROJECT PFS UPDATE 2012					2528	15-May-12	30-Apr-19																													
MILESTONES					2528	15-May-12	30-Apr-19																													
General Milestones					1075	15-May-12	30-Apr-15																													
M1010	Pre-Feasibility Study Update Complete	0	15-May-12*	15-May-12*	◆ Pre-Feasibility Study Update Complete																															
M1030	Start Early Engineering Phase 1	0	02-Jan-13*	02-Jan-13*	◆ Start Early Engineering Phase 1																															
M1060	Mobilize Site Construction Program	0	31-Jan-13	31-Jan-13	◆ Mobilize Site Construction Program																															
M1040	Award EPCM Contract	0	03-Mar-14	03-Mar-14	◆ Award EPCM Contract																															
M1020	Complete Feasibility Study	0	31-Mar-14	31-Mar-14	◆ Complete Feasibility Study																															
M1050	Complete Detailed Engineering Phase 2	0	30-Apr-15	30-Apr-15	◆ Complete Detailed Engineering Phase 2																															
Access Milestones					1829	23-Oct-13	05-Nov-18																													
M1140	Temporary Construction Camps # 1 Granduc Operational	0	23-Oct-13	23-Oct-13	◆ Temporary Construction Camps # 1 Granduc Operational																															
M1100	Mobilize Glacier Road "B" to Ted Morris Creek - 2014/15	185	24-Oct-13	28-Apr-14																																
M1141	Temporary Construction Camps # 3 Eskay Creek Operational	0	03-Oct-14	03-Oct-14	◆ Temporary Construction Camps # 3 Eskay Creek Operational																															
M1071	Upgrade Eskay Creek Access Road to Camp #3 Location	0	20-Feb-15	20-Feb-15	◆ Upgrade Eskay Creek Access Road to Camp #3 Location																															
M1142	Temporary Construction Camps # 8 Unuk North Side Operational	0	06-Mar-15	06-Mar-15	◆ Temporary Construction Camps # 8 Unuk North Side Operational																															
M1143	Temporary Construction Camps # 11 Unuk South Side Operational	0	21-Mar-15	21-Mar-15	◆ Temporary Construction Camps # 11 Unuk South Side Operational																															
M1121	Construct Treaty Creek Bell Irving Bridge	153	28-Oct-14	31-Mar-15																																
M1110	Mobilize Glacier Road "B" to Ted Morris Creek - 2015/16	233	06-Sep-14	28-Apr-15																																
M1130	Construct Treaty Creek Marshalling Yard	0	26-Sep-15	26-Sep-15	◆ Construct Treaty Creek Marshalling Yard																															
M1080	Construct Coulter Creek Access Eskay to Unuk River Complete	0	23-Jan-16	23-Jan-16	◆ Construct Coulter Creek Access Eskay to Unuk River Complete																															
M1153	Temporary Construction Camps # 7 Unuk North Side Operational	0	31-May-16	31-May-16	◆ Temporary Construction Camps # 7 Unuk North Side Op																															
M1090	Cosntruct Coulter Creek Access Unuk River to Mine Site Complete	0	28-Jun-16	28-Jun-16	◆ Cosntruct Coulter Creek Access Unuk River to Mine Si																															
M1070	Upgrade Hyw 37 Including Bridges (Sub Contracts) - Complete	0	05-Nov-18	05-Nov-18	◆ Upgrade Hyw 37																															
Mine Site Milestones					1544	01-Aug-14	30-Oct-18																													
M1200	Start Mitchell Twinned Diversion Tunnel (MDT)	0	01-Aug-14	01-Aug-14	◆ Start Mitchell Twinned Diversion Tunnel (MDT)																															
M1180	Start Mitchell - Teigen Twinned Tunnel (MTT) - Mine Site Heading North	0	01-Sep-14	01-Sep-14	◆ Start Mitchell - Teigen Twinned Tunnel (MTT) - Mine Site Heading North																															
M1160	Temporary Construction Power Operational	0	18-Oct-14	18-Oct-14	◆ Temporary Construction Power Operational																															
M1210	Start McTagg Twinned Diversion Tunnel (MTDT)	0	02-Jan-15	02-Jan-15	◆ Start McTagg Twinned Diversion Tunnel (MTDT)																															
M1230	Water Treatment Plant Phase 1 Complete	0	25-Sep-15	25-Sep-15	◆ Water Treatment Plant Phase 1 Complete																															
M1150	Access Roads Complete to all Major Areas	0	06-Jun-16	06-Jun-16	◆ Access Roads Complete to all Major Areas																															
M1231	Water Treatment Plant Phase 2 Complete	0	28-Sep-16	28-Sep-16	◆ Water Treatment Plant Phase 2 Complete																															
M1310	Mine Truckshop Complete	0	31-Oct-16	31-Oct-16	◆ Mine Truckshop Complete																															
M1300	Mitchell Site 350 Person Permanent Camp Complete	0	27-Dec-16	27-Dec-16	◆ Mitchell Site 350 Person Permanent Camp Co																															
M1240	Water Storage Dam Operational	0	16-Jun-17	16-Jun-17	◆ Water Storage Dam Operational																															
M1250	Mine Site Foundations Complete	0	24-Jun-17	24-Jun-17	◆ Mine Site Foundations Complete																															
M1270	Primary Crusher Building Complete	0	07-Sep-17	07-Sep-17	◆ Primary Crusher Building Complete																															

■ Remaining Work
■ Preliminary Longest Path
◆ Milestone
▶ Summary

SEABRIDGE GOLD INC.
EPCM IMPLEMENTATION SCHEDULE - Detailed by Area (sorted by Finish Dates)
PRE-FEASIBILITY STUDY 2012
DD 30-Apr-12

Date	Revision	Checked	Approved
12-Jun-12	1252880100 - EPCM Schedule L2 (IFR)	E. Cori	

SEABRIDGE GOLD

Activity ID	Activity Name	Orgn Durn	Start	Finish	2012				2013				2014				2015				2016				2017				2018				2019							
					Q4	Q1	Q2	Q3	Q4	Q1	Q2	Q3	Q4	Q1	Q2	Q3	Q4	Q1	Q2	Q3	Q4	Q1	Q2	Q3	Q4	Q1	Q2	Q3	Q4	Q1	Q2	Q3	Q4							
M1220	Mitchel Tunnels Complete - Mine Site	0		27-Jan-18																																			27-Jan-18	◆ Mitchel Tunnels Complete -
M1260	Mine Site Permanent Power Operational	0		03-Jun-18																																			03-Jun-18	◆ Mine Site Permanent P
M1280	Primary Crusher Stockpile Conveyors Complete	0		11-Jul-18																																		11-Jul-18	◆ Primary Crusher Stoc	
M1290	Primary Crushing System Mechanically Complete - (Waiting on Permanent Power)	0		30-Oct-18																																		30-Oct-18	◆ Primary Crushin	
Plant Site Milestones		1663	01-Sep-14	31-Mar-19																																				
M1440	Start Construction Teigen Tunnel	0	01-Sep-14																														01-Sep-14	◆ Start Construction Teigen Tunnel						
M1296	Start Site Wide Foundations	0	01-May-16																														01-May-16	◆ Start Site Wide Foundations						
M1292	Temporary Construction Power Operational	0		31-Jul-16																													31-Jul-16	◆ Temporary Construction Power Operational						
M1293	Temporary Construction Camp # 5 Operational	0		01-Dec-16																													01-Dec-16	◆ Temporary Construction Camp # 5 Operational						
M1291	Site Capture Complete	0		22-Dec-16																													22-Dec-16	◆ Site Capture Complete						
M1311	Start Mitchell - Teigen Twinned Tunnel (MTT) - Conv Installations from Plant Site Ph1	0	02-Jan-17																														02-Jan-17	◆ Start Mitchell - Teigen Twinned Tunnel (MTT) -						
M1312	Start Mitchell - Teigen Twinned Tunnel (MTT) - Saddle to Km 10 Ph2	0	02-Apr-17																														02-Apr-17	◆ Start Mitchell - Teigen Twinned Tunnel (MT						
M1450	Start East Catchment Tunnels (ECT)	0	01-May-17																														01-May-17	◆ Start East Catchment Tunnels (ECT)						
M1430	Diversion & Seepage Collection Ponds Complete	0		01-Jul-17																													01-Jul-17	◆ Diversion & Seepage Collection Ponds						
M1294	Site Preparation Activities Complete	0		31-Jul-17																													31-Jul-17	◆ Site Preparation Activities Complete						
M1314	Start Mitchell - Teigen Tunnel (MTT) Km 10 to Km 0 at Mine Site Ph3	0	02-Oct-17																														02-Oct-17	◆ Start Mitchell - Teigen Tunnel (MT						
M1460	Plant Site 250 Person Camp Complete	0		15-Nov-17																													15-Nov-17	◆ Plant Site 250 Person Camp Co						
M1350	Mill Building Erected & Cladding Complete	0		27-Feb-18																													27-Feb-18	◆ Mill Building Erected & Clad						
M1316	East Catchment Tunnel Complete	0		28-Mar-18																													28-Mar-18	◆ East Catchment Tunnel C						
M1390	138 kV Power Supply & Distribution from Hyw 37 Operational	0		03-May-18																													03-May-18	◆ 138 kV Power Supply,&						
M1297	Plant Site Foundations Complete	0		09-May-18																													09-May-18	◆ Plant Site Foundations C						
M1360	Process Equipment Installed	0		07-Aug-18																													07-Aug-18	◆ Process Equipment						
M1410	Tailings Starter Dams Complete	0		27-Aug-18																													27-Aug-18	◆ Tailings Starter Da						
M1295	Tailings Management Facility Complete	0		27-Aug-18																													27-Aug-18	◆ Tailings Manageme						
M1420	Tailings Disposal & Reclaim Complete	0		30-Sep-18																													30-Sep-18	◆ Tailings Disposal						
M1313	Complete Mitchell Teigen Twinned Tunnel (MTT) Conveyors Ph 1 & 2	0		29-Oct-18																													29-Oct-18	◆ Complete Mitch						
M1400	Mill Building Mechanically Complete	0		20-Dec-18																													20-Dec-18	◆ Mill Building M						
M1380	Mitchell/Teigen Conveyor Belting Installation/Fusing Complete	0		17-Jan-19																													17-Jan-19	◆ Mitchell/Teig						
M1315	Mitchell Teigen Tunnel (MTT) Conveyor Installation Complete	0		31-Jan-19																													31-Jan-19	◆ Mitchell Tei						
M1470	Administration Building Complete	0		16-Feb-19																													16-Feb-19	◆ Administra						
M1471	Stewart Loadout Facility Complete	0		31-Mar-19																													31-Mar-19	◆ Stewart L						
Commissioning Milestones		304	01-Jul-18	30-Apr-19																																				
M1480	Primary Crusher Commissioning Complete	174	01-Jul-18	21-Dec-18																																				
M1490	Mill Building Commissioning Complete	180	02-Sep-18	28-Feb-19																																				
M1500	Mitchell/Teigen Conveyor Commissioning Complete	180	03-Oct-18	31-Mar-19																																				
M1510	Project Complete	0		30-Apr-19																														30-Apr-19 ◆ Project						
PERMITS		280	29-Nov-13	30-Dec-14																																				
X1250	Permit to Mobilize the Granduc Staging Area	0	29-Nov-13*																														29-Nov-13*	◆ Permit to Mobilize the Granduc Staging Area						
X1200	Provincial Government EA Decision	0	01-Aug-14*																														01-Aug-14*	◆ Provincial Government EA Decision						
X1220	Provincial Government Permit Decision - Camps, Coulter Creek/Treaty Creek Access ...	0	01-Aug-14*																														01-Aug-14*	◆ Provincial Government Permit Decision - Camps, Coulter Creek/Treaty Creek Access P						
X1230	Permit to Install Bell Irving and Unuk River Bridges	0	01-Aug-14																														01-Aug-14	◆ Permit to Install Bell Irving and Unuk River Bridges						
X1210	Federal Government EA Decision	0	30-Dec-14*																														30-Dec-14*	◆ Federal Government EA Decision						

Activity ID	Activity Name	Orgn Durn	Start	Finish	2012				2013				2014				2015				2016				2017				2018				2019			
					Q4	Q1	Q2	Q3	Q4	Q1	Q2	Q3	Q4	Q1	Q2	Q3	Q4	Q1	Q2	Q3	Q4	Q1	Q2	Q3	Q4	Q1	Q2	Q3	Q4	Q1	Q2	Q3	Q4	Q1	Q2	Q3
ENGINEERING / PROJECT MANAGEMENT & PLANNING		599	02-Jan-13	30-Apr-15	30-Apr-15																															
Detailed Engineering - Phase 1 Early Works 2013		329	02-Jan-13	15-Apr-14	15-Apr-14																															
EE1010	Mobilize Early Engineering Phase 1	22	02-Jan-13	31-Jan-13																																
EE1020	Develop Detailed Engineering Plan for Phase 1	24	15-Jan-13	15-Feb-13																																
EE1090	Complete Final Temporary Construction Camp Selection & Specifications	41	01-Feb-13	29-Mar-13																																
EE1060	Complete Bridge Design for Access Roads and Highway 37	64	01-Apr-13	28-Jun-13																																
EE1050	Finalize Access Road Design & Quarry Locations	106	01-Mar-13	30-Jul-13																																
EE1070	Finalize Tunnel Design and Waste Rock Management Plan	169	01-Feb-13	30-Sep-13																																
EE1080	Complete Water Treatment & Diversions Design	150	01-Apr-13	30-Oct-13																																
EE1110	Develop Detailed Cut/Fill/Drill/Blast for Earthworks Program (Site Wide)	150	01-Apr-13	30-Oct-13																																
EE1040	Complete Feasibility Study Field Work - Geotech, Material Sourcing, Pit Hydrology	150	30-May-13	30-Dec-13																																
EE1100	Complete Mine Site Pioneering Roads Design	170	01-May-13	30-Dec-13																																
EE1030	Complete Feasibility Study	318	02-Jan-13	31-Mar-14																																
EE1120	Engineering Phase 1 Complete	0		15-Apr-14	◆ Engineering Phase 1 Complete																															
Detailed Engineering - Phase 2 Process, Mine, Crushing, Conveying, Tailings		302	03-Mar-14	30-Apr-15	30-Apr-15																															
DE1010	Mobilize Early Engineering Phase 2	21	03-Mar-14	31-Mar-14																																
DE1020	Develop Detailed Engineering Plan for Phase 2	23	17-Mar-14	16-Apr-14																																
DE1030	Complete Preliminary Process Design & Select Equipment	87	01-Apr-14	30-Jul-14																																
DE1050	Project Commitment for Long Lead Items & Logistics Contracts	65	01-May-14	30-Jul-14																																
DE1060	Develop Process Equipment Specifications for Tendering	65	01-May-14	30-Jul-14																																
DE1180	Confirm Aggregate Supply for Concrete - Both Sites	66	30-May-14	29-Aug-14																																
DE1070	Finalize General Arrangements all Areas	109	02-Jun-14	30-Oct-14																																
DE1120	Detailed Engineering TMF	174	03-Mar-14	30-Oct-14																																
DE1160	Complete Site Wide Power Distribution	131	01-May-14	30-Oct-14																																
DE1190	Finalize Contracting Strategies for the Project	153	16-Apr-14	14-Nov-14																																
DE1080	Detailed Engineering Primary Crushing Area	152	01-May-14	28-Nov-14																																
DE1130	Detailed Engineering for Site Wide Services	174	01-Apr-14	28-Nov-14																																
DE1040	Source Vendor Information for Design	108	31-Jul-14	29-Dec-14																																
DE1090	Detailed Engineering Teigen Tunnel Conveying System	129	02-Jul-14	29-Dec-14																																
DE1140	Finalize Temporary and Permanent Building GA's & Spec's	173	01-May-14	29-Dec-14																																
DE1200	Finalize Detailed Level 3 Construction Schedule	195	01-Apr-14	29-Dec-14																																
DE1210	Develop Procurement/Logistic Plans & Strategy	195	01-Apr-14	29-Dec-14																																
DE1170	Complete Site Wide Supporting Mechanical	172	30-May-14	28-Jan-15																																
DE1100	Detailed Engineering for Tunnel Service Piping & Electrical	106	08-Sep-14	04-Feb-15																																
DE1150	Complete Electrical Main Power Supply Design to Site	248	13-Mar-14	25-Feb-15																																
DE1220	Finalize Estimate and Project Budget (Definitive Estimate)	63	18-Dec-14	18-Mar-15																																
DE1110	Detailed Engineering Plant Mill Building - Includes Process Detailed Design	260	01-Apr-14	01-Apr-15																																
DE1230	Develop Control Budget & Cost Control System	106	03-Nov-14	01-Apr-15																																
DE1240	Engineering Complete	0		30-Apr-15	◆ Engineering Complete																															
Construction - Front end Planning		577	01-Feb-13	30-Apr-15	30-Apr-15																															
FC1010	Develop Site Infrastructure Plan and Procedures	105	01-Feb-13	28-Jun-13																																
FC1020	Develop Mobilization Plans for 2014 for Frank Mackie Glacier Road	108	01-Apr-13	30-Aug-13																																

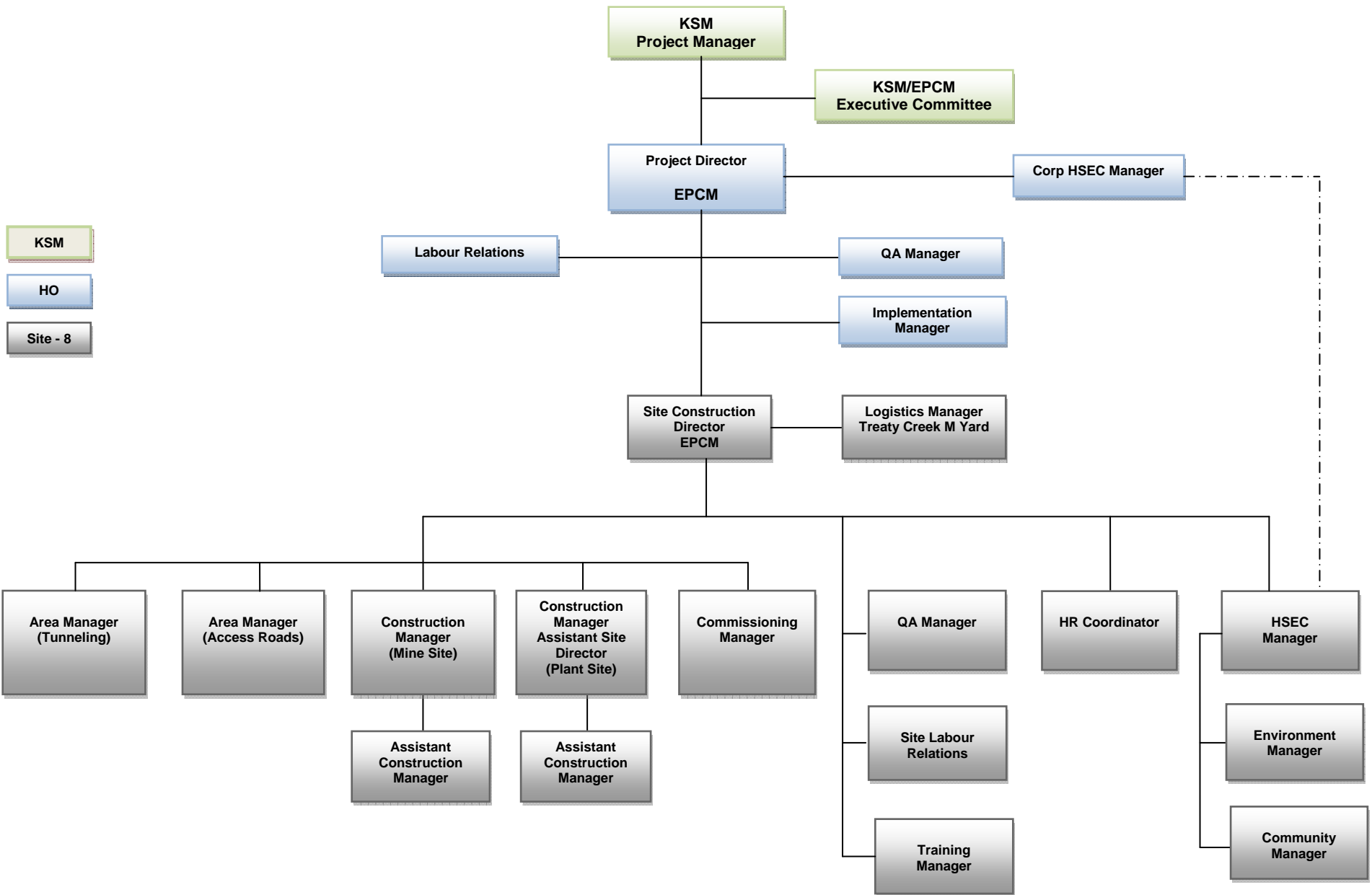
Activity ID	Activity Name	Orgn Durn	Start	Finish	2012				2013				2014				2015				2016				2017				2018				2019			
					Q4	Q1	Q2	Q3	Q4	Q1	Q2	Q3	Q4	Q1	Q2	Q3	Q4	Q1	Q2	Q3	Q4	Q1	Q2	Q3	Q4	Q1	Q2	Q3	Q4	Q1	Q2	Q3	Q4			
Mitchell Earthworks - Includes Avalanche Control		816	01-Apr-14	28-Jun-16																																
C2350	Hold Contract "Kick-Off" Meeting - Before Mobilization	6	01-Apr-14*	06-Apr-14																																
C2360	Review Safety Plan for Site Earthworks - Drill/Blast/Explosive Storage	6	01-Apr-14	06-Apr-14																																
C2370	Conduct Contractor Pre-Mob Equipment Inspections	5	07-Apr-14	11-Apr-14																																
C2400	Set-up Earthworks Contractors Infrastructure Yard	22	08-Aug-14	29-Aug-14																																
C2410	Complete Logging, Stockpiling, Clearing & Grubbing Morris Creek Area	22	08-Aug-14	29-Aug-14																																
C2450	Set-up Explosives Magazine Storage Area	12	19-Aug-14	30-Aug-14																																
C2420	Set-up Crushing/Screening Plant, dev laydown Areas, Initial Camp Pads Morris Creek	37	08-Aug-14	13-Sep-14																																
C2390	Mobilize Earthworks Equipment & Infrastructure to Mitchell Site	58	01-Aug-14	27-Sep-14																																
C2380	Mobilize Contractors Equipment & Infrastructure to Granduc Marshalling Yard	60	01-Aug-14	29-Sep-14																																
C2470	Construct Road "C" Sulphurets Valley Access Road to Dam Site	51	25-Aug-14	14-Oct-14																																
C2460	Construct Road "Q" Upper Sulphurets Access to Mitchell Tunnel Exit - Pioneer 1st	82	29-Aug-14	18-Nov-14																																
C2461	Construct MTT Tunnel Water Collection Ponds & Treatment Equipment	30	04-Nov-14	03-Dec-14																																
C2610	Erect Camp #9 & Support Facilities	92	28-Sep-14	28-Dec-14																																
C2620	Camp #9 Operational	0		09-Jan-15																																
C2430	Crush & Produce Aggregate Materials for Road Construction	168	15-Aug-14	31-Jan-15																																
C2660	Develop Rough Grade for the Water Treatment Plant Area	92	28-Nov-14	01-Mar-15																																
C2480	Construct Road "R" to McTagg Diversion Tunnel - Pioneer First	138	19-Nov-14	07-Apr-15																																
C2630	Erect Camp #10 & Support Facilities	153	28-Nov-14	01-May-15																																
C2640	Camp #10 Operational	0		11-May-15																																
C2500	Construct Road "H" from Mitchell Tunnel Exit to Road "G1" - Pioneer First	61	08-Apr-15	07-Jun-15																																
C2440	Crush & Produce Concrete Aggregate Materials for Batch Plant	153	01-Feb-15	03-Jul-15																																
C2600	Develop Rough Grade for the Truckshop / Camp 9A & 9B Areas	59	01-Jun-15*	29-Jul-15																																
C2510	Construct Road "G1" to Camp 9A & Truckshop Area - Pioneer First	90	08-Jun-15	05-Sep-15																																
C2490	Construct Coulter-Sulphurets Road - Second Front - Pioneer First	317	19-Nov-14	03-Oct-15																																
C2680	Construct Fuel Tank Storage Berms & Liners	91	30-Jul-15	28-Oct-15																																
C2520	Construct Road "D" from Truckshop Area to Mitchell Teigen Tunnel Site - Pioneer 1st	150	06-Sep-15	04-Feb-16																																
C2580	Construct Road "E" f/ Crushing Area to Mitchell Diversion Tunnel Entrance-Pioneer 1st	92	05-Feb-16	06-May-16																																
C2550	Construct Road "F" from Road "D" to McTagg North Diversion Tunnel - Pioneer 1st	123	05-Feb-16	06-Jun-16																																
C2650	Drill/Blast Crusher Pocket & Reclaim Areas	92	15-Mar-16*	14-Jun-16																																
C2590	Set-up Avalanche Control Procedures on Access Roads	123	22-Feb-16*	23-Jun-16																																
C2530	Erect Camp #4 & Support Facilities	31	29-May-16*	28-Jun-16																																
C2540	Camp #4 Operational	0		28-Jun-16																																
Construct Water Storage Dam & Center Core		998	01-Oct-14	30-Jun-17																																
C2671	Develop Quarry Face	120	01-Oct-14*	30-Jan-15																																
C2672	Shape Valley for Dam Site	120	30-Dec-14	30-Apr-15																																
C2673	Pressure Grouting for Dam	240	01-May-15	26-Dec-15																																
C2674	Construct Diversion Channel	240	31-May-15	27-Jan-16																																
C2675	Install Asphalt Center Core	300	23-Aug-15	19-Jun-16																																
C2676	Construct Storage Dam to Final Elevation	600	22-Oct-15	16-Jun-17																																
C2690	Mitchell Earthworks Complete	0		30-Jun-17																																
Site Wide Foundations - Batch Plant Supply & Operation		721	01-Jul-15	24-Jun-17																																

Activity ID	Activity Name	Orgn Durn	Start	Finish	2012 2013 2014 2015 2016 2017 2018 2019																															
					2012				2013				2014				2015				2016				2017				2018				2019			
					Q4	Q1	Q2	Q3	Q4	Q1	Q2	Q3	Q4	Q1	Q2	Q3	Q4	Q1	Q2	Q3	Q4	Q1	Q2	Q3	Q4	Q1	Q2	Q3	Q4	Q1	Q2	Q3	Q4			
C3280	Erect Primary Crusher Building Steel & Cladding	390	12-Aug-16	07-Sep-17																																
C3290	Erect Primary Crusher Building Equipment	210	15-Jun-17	12-Jan-18																																
C3310	Erect Stockpile Feed Conveyor System	120	12-Nov-17	13-Mar-18																																
C3300	Complete Mechanical & Electrical Crusher Building	150	14-Oct-17	14-Mar-18																																
C3320	Erect Stockpile Discharge Conveyors	122	11-Jan-18	12-May-18																																
C3330	Erect Conveyors to Mine Portal Entrance	153	09-Feb-18	11-Jul-18																																
C3340	Install U/G Service Piping at Truckshop Area to all Buildings	153	10-Apr-18	09-Sep-18																																
C3350	Complete Fuel Tank Piping and Dispensing Modules	153	10-May-18	09-Oct-18																																
C3360	General Contractor - Primary Crushing - Complete	0		30-Oct-18																																
Power Plant - Upper Sulphurets		183	01-Apr-17	30-Sep-17																																
C3740	Hold Contract "Kick-Off" Meeting - Before Mobilization	11	01-Apr-17*	11-Apr-17																																
C3750	Review Safety Plan for Plant Erection	11	01-Apr-17	11-Apr-17																																
C3760	Conduct Contractor Pre-Mob Equipment Inspections	6	06-Apr-17	11-Apr-17																																
C3770	Mobilize Contractors Equipment & Infrastructure	31	12-Apr-17	12-May-17																																
Upper Sulphurets Power Plant		118	05-Jun-17	30-Sep-17																																
C3860	Erect Building & Equipment Modules	62	05-Jun-17	05-Aug-17																																
C3870	Complete Mechanical & Electrical Installations	62	19-Jun-17	19-Aug-17																																
C3880	Commission Mctagg Power Plant on Temporary Power	31	03-Aug-17	02-Sep-17																																
C3890	Upper Sulphurets Power Plant Complete	0		16-Sep-17																																
C3900	Power Plants - Mctagg Diversion & Upper Sulphurets Complete	0		30-Sep-17																																
Mctagg Power Plant (REMOVED)		145	26-Apr-17	17-Sep-17																																
C3780	Complete Site Grading	32	26-Apr-17	27-May-17																																
C3790	Complete Building & Module Foundations	92	04-May-17	03-Aug-17																																
C3800	Erect Building & Equipment Modules	30	04-Aug-17	02-Sep-17																																
C3810	Complete Mechanical & Electrical Installations	30	19-Aug-17	17-Sep-17																																
C3820	Commission Mctagg Power Plant on Temporary Power	30	19-Aug-17	17-Sep-17																																
C3830	Mctagg Power Plant Complete	0		17-Sep-17																																
Mine Truckshop		487	01-Jul-15	31-Oct-16																																
C4030	Hold Contract "Kick-Off" Meeting - Before Mobilization	11	01-Jul-15*	11-Jul-15																																
C4040	Review Safety Plan for Plant Erection	11	01-Jul-15	11-Jul-15																																
C4050	Conduct Contractor Pre-Mob Equipment Inspections	6	06-Jul-15	11-Jul-15																																
C4060	Mobilize Contractors Equipment & Infrastructure	30	01-Aug-15*	30-Aug-15																																
C4070	Erect Steel Building	153	31-Aug-15	01-Feb-16																																
C4080	Complete Cladding & Exterior Doors	105	17-Nov-15	02-Mar-16																																
C4090	Install Mechanical Equipment & Storage Tanks	137	03-Mar-16	17-Jul-16																																
C4130	Complete Interior Architectural Finishes	122	17-Apr-16	16-Aug-16																																
C4110	Complete HVAC Installations	76	03-Jun-16	17-Aug-16																																
C4100	Install Piping Systems	122	02-May-16	31-Aug-16																																
C4120	Complete Electrical Installations	153	02-May-16	01-Oct-16																																
C4140	Commission Facility	26	21-Sep-16	16-Oct-16																																
C4150	Mine Truckshop Complete	0		31-Oct-16																																
Emergency Services Building		379	01-Oct-15	15-Oct-16																																

Activity ID	Activity Name	Orgn Durn	Start	Finish	2012				2013				2014				2015				2016				2017				2018				2019			
					Q1	Q2	Q3	Q4	Q1	Q2	Q3	Q4	Q1	Q2	Q3	Q4	Q1	Q2	Q3	Q4	Q1	Q2	Q3	Q4	Q1	Q2	Q3	Q4	Q1	Q2	Q3	Q4	Q1	Q2	Q3	Q4
					3	Q4	Q1	Q2	Q3	Q4	Q1	Q2	Q3	Q4	Q1	Q2	Q3	Q4	Q1	Q2	Q3	Q4	Q1	Q2	Q3	Q4	Q1	Q2	Q3	Q4	Q1	Q2	Q3	Q4	Q1	Q2
C4530	Site Capture Complete	0		22-Dec-16																	22-Dec-16					◆ Site Capture Complete										
Earthworks "Site Preparation - Tailings Disposal & Reclaim Facility"		856	20-Apr-16	27-Aug-18																						▶ 27-Aug-18										
C4540	Hold Contract "Kick-Off" Meeting - Before Mobilization	6	20-Apr-16*	25-Apr-16																																
C4550	Review Safety Plan for Site Earthworks - Drill/Blast/Explosive Storage	6	20-Apr-16	25-Apr-16																																
C4560	Conduct Contractor Pre-Mob Equipment Inspections	5	26-Apr-16	30-Apr-16																																
C4570	Mobilize Contractors Equipment & Infrastructure	61	01-May-16*	30-Jun-16																																
Site Preparation Activities		394	01-Jul-16	31-Jul-17																						▶ 31-Jul-17										
C4580	Complete Treaty Creek Access Road to Concentrate Storage & Loadout Area	32	01-Jul-16	01-Aug-16																																
C4590	Construct Transportation Access Road to MTT Tunnel Entrance	60	03-Jul-16	31-Aug-16																																
C4600	Complete Rough Grading for Main Processing Plant & Pebble Crushing Areas	92	01-Aug-16	31-Oct-16																																
C4610	Complete Rough Grading for Loadout Area	31	01-Oct-16	31-Oct-16																																
C4620	Complete Rough Grading for Shops, Storage Areas & Camp Facilities	61	01-Oct-16	30-Nov-16																																
C4630	Complete Gravel Pad for the Stockpile Area	61	31-Oct-16	30-Dec-16																																
C4640	Complete Gravel Pad for the Main Sub-Station	61	31-Oct-16	30-Dec-16																																
C4650	Complete Liner and Berm installation for the Fuel Unloading Station	61	31-Oct-16	30-Dec-16																																
C4660	Construct Plant Site Run Off Collection Ditch to the TM Facility	61	01-Apr-17*	31-May-17																																
C4670	Construct Plant Site Run off/Seepage Collection Channel to TM Facility	61	02-May-17	01-Jul-17																																
C4680	Construct Access Road & Pipe Bench to TM Facility	30	02-Jul-17	31-Jul-17																																
Tailings Management Facility (TMF) Activities		482	01-May-17	27-Aug-18																						▶ 27-Aug-18										
C4690	Construct Access Roads to Starter Dams	60	01-May-17	29-Jun-17																																
C4750	Install North East Diversion HDPE Pipelines for Control	61	31-Jul-17	29-Sep-17																																
C4760	Construct South West Diversion Channel	45	31-Aug-17	14-Oct-17																																
C4740	Construct Upper East & North East Diversion Channel	62	30-Aug-17	30-Oct-17																																
C4720	Construct North Seepage Collection/Sediment Control Dam	61	30-Sep-17	29-Nov-17																																
C4730	Construct South Cell Seepage Collection/Sediment Control Dam	61	30-Sep-17	29-Nov-17																																
C4700	Construct Starter Dams for North Cell & Residue Storage Cell	250	30-Jun-17	08-Mar-18																																
C4710	Install HDPE Liner in the Residue Storage Cell - CIL	120	09-Mar-18	06-Jul-18																																
C4770	Demob Earthworks Equipment & Infrastructure	31	07-Jul-18	06-Aug-18																																
C4780	Earthworks "Site Preparation - Tailings Disposal & Reclaim Facility Complete	0		27-Aug-18																						▶ 27-Aug-18 ◆ Earthworks "Site P										
Site Wide Foundations - Batch Plant Supply & Operation		787	01-May-16	30-Jun-18																						▶ 30-Jun-18										
C4790	Hold Contract "Kick-Off" Meeting - Before Mobilization	6	01-May-16*	06-May-16																																
C4800	Review Safety Plan for Site Foundations & Concrete Supply	6	01-May-16	06-May-16																																
C4810	Conduct Contractor Pre-Mob Equipment Inspections	5	07-May-16	11-May-16																																
C4820	Mobilize Contractors Equipment & Infrastructure	45	02-Jun-16	16-Jul-16																																
C4830	Set-up Batch Plant Facility & Aggregate Storage Stockpile	46	16-Jun-16	31-Jul-16																																
C4840	Detailed Excavation, Form, Pour Process Plant Building Foundations	92	08-Aug-16	07-Nov-16																																
C4850	Form & Pour Process Plant Equipment Foundations & Slab On Grade Floors	242	08-Oct-16	08-Jun-17																																
C4870	Form & Pour Elevated Slab Foundations all Areas	77	07-Jun-17	22-Aug-17																																
C4860	Form & Pour Cyanide Destruction & Recovery Building & Equipment Foundations	211	07-Feb-17	05-Sep-17																																
C4920	Form & Pour Permanent Camp Facility Foundations	90	24-Jun-17	21-Sep-17																																
C4880	Form & Pour Pebble Building & Equipment Foundations	90	07-Jul-17	04-Oct-17																																
C4910	Form & Pour Maintenance Shop, Warehouse, Admin & Lab Foundations	122	09-Jun-17	08-Oct-17																																

Activity ID	Activity Name	Orgn Durn	Start	Finish	2012 2013 2014 2015 2016 2017 2018 2019																														
					Q3	Q4	Q1	Q2	Q3	Q4	Q1	Q2	Q3	Q4	Q1	Q2	Q3	Q4	Q1	Q2	Q3	Q4	Q1	Q2	Q3	Q4	Q1	Q2	Q3	Q4					
C6690	Hold Contract "Kick-Off" Meeting - Before Mobilization	7	01-Sep-18*	07-Sep-18																															
C6700	Review Safety Plan for Facility Erection	7	01-Sep-18	07-Sep-18																															
C6710	Conduct Contractor Pre-Mob Equipment Inspections	5	08-Sep-18	12-Sep-18																															
C6720	Mobilize Contractors Equipment & Infrastructure	31	13-Sep-18	13-Oct-18																															
C6730	Erect Steel Building, Cladding & Exterior Doors	122	14-Oct-18	14-Feb-19																															
C6740	Complete Mechanical/Electrical Installations	92	14-Dec-18	17-Mar-19																															
C6750	Install Interior Equipment & Furnishings	31	15-Feb-19	17-Mar-19																															
C6760	Commission Storage Building	17	01-Mar-19	17-Mar-19																															
C6770	Stewart Loadout Facility Complete & Operational	0		31-Mar-19																															31-Mar-19 ◆ Stewart L

KSM Organization

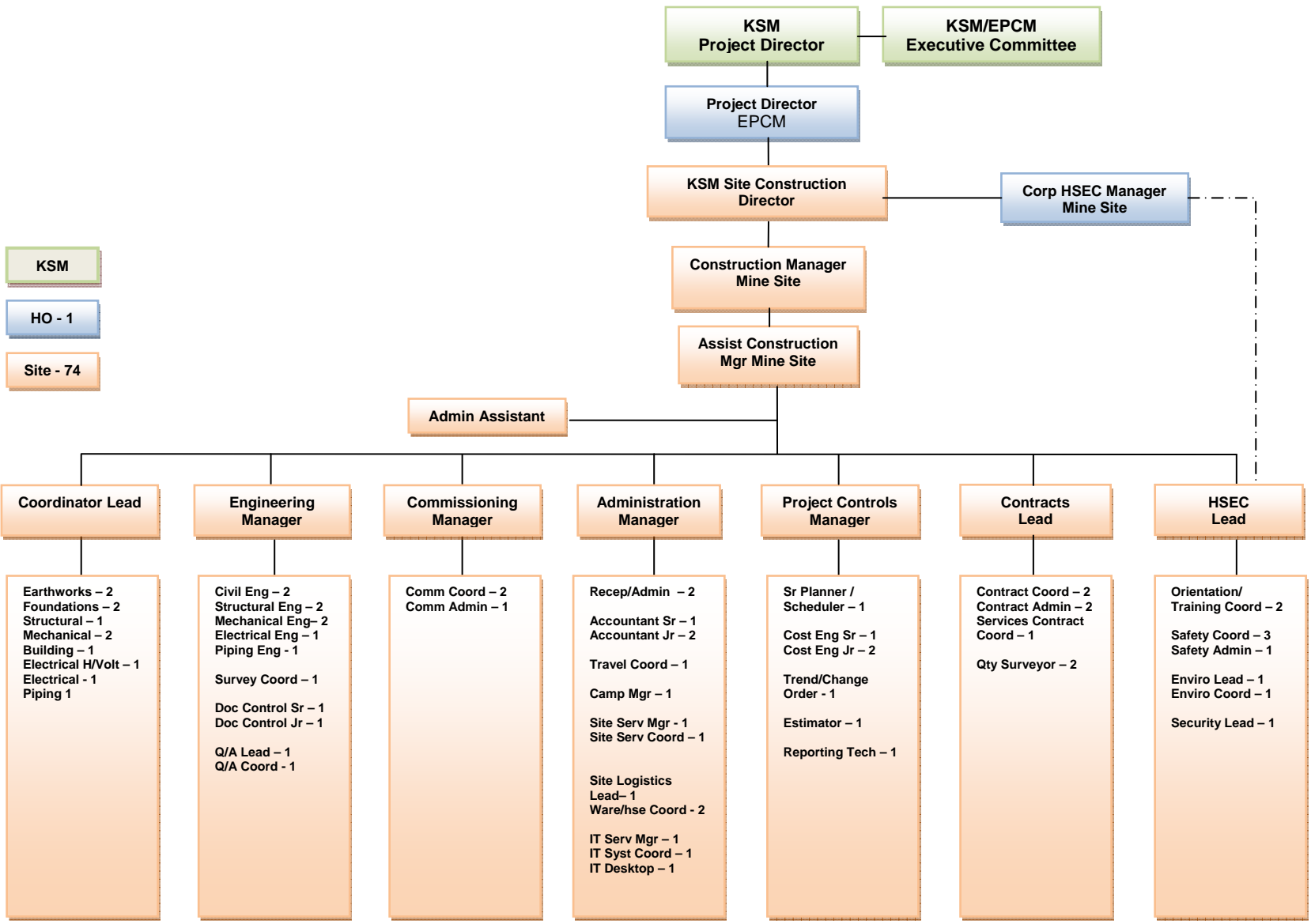


Legend:

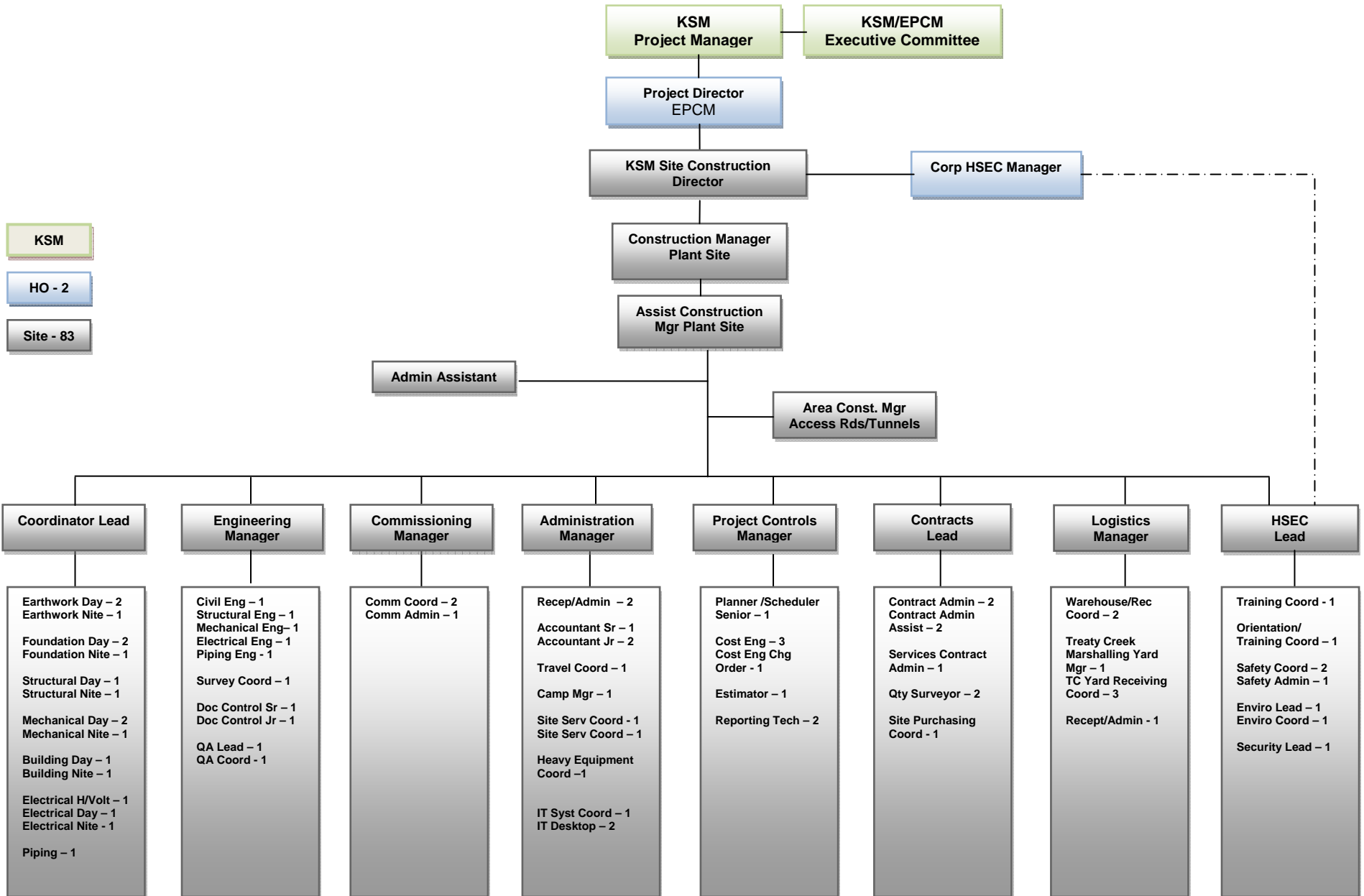
- KSM** (Green box)
- HO** (Blue box)
- Site - 8** (Grey box)

KSM

Mine Site Organization



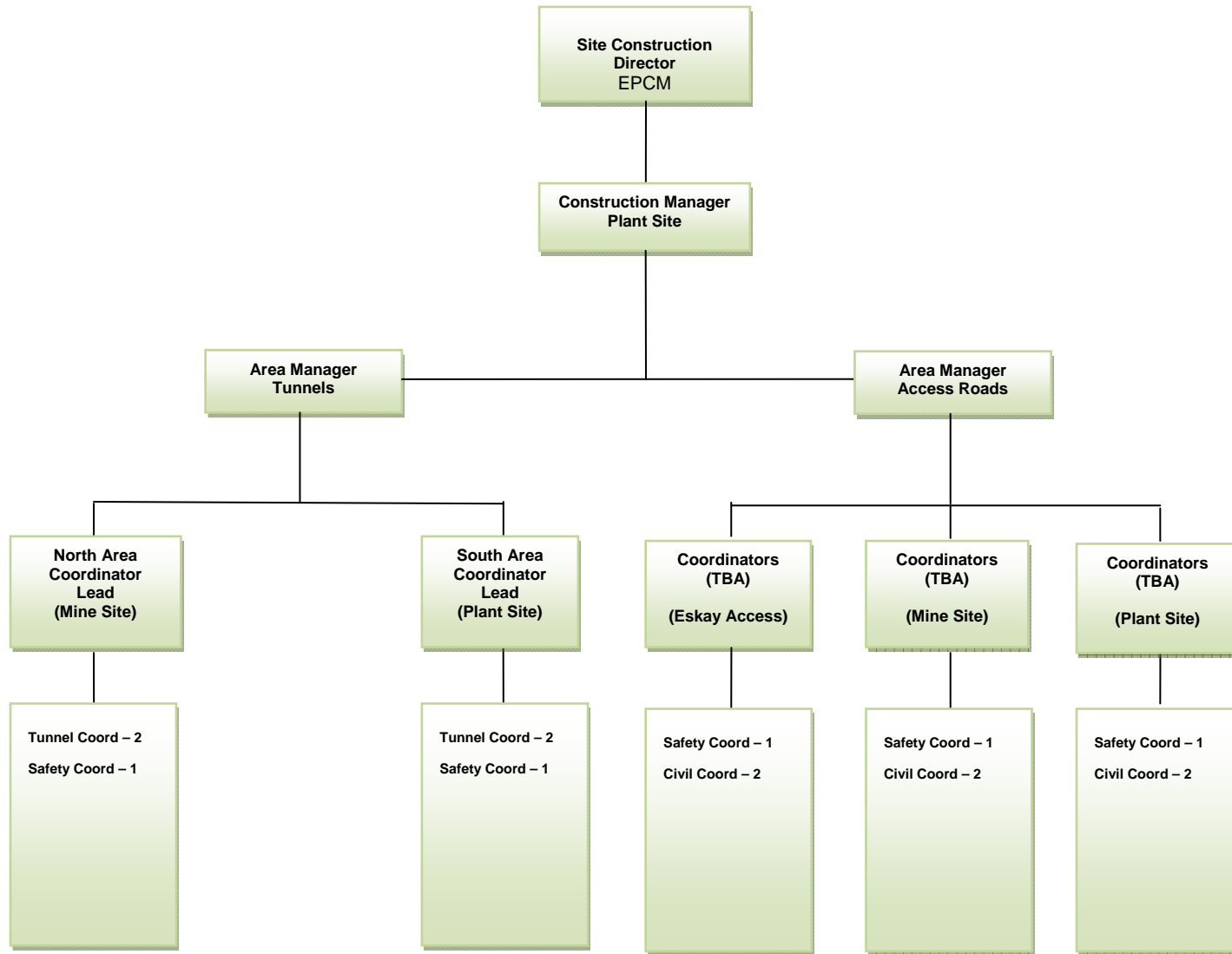
KSM Plant Site Organization



KSM

Tunnel & Access Road Organizations

Site - 17



Project Mgt Totals	Hrs	Dollars
2013	5,536	\$790,610
2014	10,740	\$1,483,524
2015	4,794	\$855,064
2016	2,676	\$630,722
2017	2,376	\$617,229
2018	1,458	\$392,646
2019	480	\$126,092
2020	20	\$6,149
Totals	28,080	\$4,902,037

Average Rate

\$174.57

Construction Totals	Hrs	Dollars
2013	5,038	\$1,016,383
2014	40,403	\$5,898,203
2015	210,260	\$27,981,891
2016	391,130	\$48,593,588
2017	421,205	\$52,631,651
2018	404,007	\$51,930,424
2019	308,937	\$42,267,982
2020	8,312	\$1,383,451
Totals	1,789,292	231,703,571

\$129.49

Combined Totals	Total Hrs	Total Dollars
2013	10,574	\$1,806,993
2014	51,143	\$7,381,727
2015	215,054	\$28,836,955
2016	393,806	\$49,224,310
2017	423,581	\$53,248,880
2018	405,465	\$52,323,070
2019	309,417	\$42,394,073
2020	8,332	\$1,389,600
Totals	1,817,372	236,605,608

\$130.19

Premium Time On Field Hours	Mhrs	Total Dollars
2013	147	\$14,673
2014	1,177	\$117,678
2015	6,124	\$643,028
2016	11,392	\$1,253,135
2017	12,610	\$1,450,133
2018	11,767	\$1,412,064
2019	8,998	\$1,079,780
2020	242	\$29,052
Totals	52,457	5,999,544

114.37

NOTES / CLARIFICATIONS

1. EPCM Office average - 173 mhrs per month
2. Senior Staff - 3 & 1 - 216 mhrs per month
2. Site Staff average - 3 & 1 - 216 mhrs per month
3. Site hours per day - 10
4. 2 week Xmas shut down.
5. Retention/Hardship Allowances carried in Indirects
6. Rate increases per year @ 3%

Note: 3% Allowance for Premium Time Hours included in totals

Table with columns for months (Rev 7, 2013, 2014, 2015, 2016, 2017, 2018, 2019) and rows for various camps and projects. Includes sub-sections like 'CAMP #8 - Unit South Camp', 'CAMP #11 - Treaty Creek Camp', 'CAMP #12 - Highway 37 Construction Camp', and 'CAMP SUMMARY'.

CONTRACTING PACKAGING & STRATEGY OVERVIEW

General

The preliminary packaging strategy for the KSM Mine Site and Plant Site locations is divided into contract packages. During the contractor expression of interest, pre-qualifications phase of the project and the advancement of detailed engineering, the packages will be combined to reduce the number of final contracts and form a contracting strategy for the Project.

A portion of the packages listed in the strategy document have been combined early in the process to reduce contracts and provide various contractors with a natural flow and control of their work areas.

The project will be constructed as a managed open site, neither union nor non-union.

To maximize the available resources in the community the project team will source and qualify local suppliers and contractors to promote business opportunities in the local area. Consideration has been provided in the strategy to assist the Owner with local involvement by dividing the packages into reasonable scopes for the local contractors to tender.

The contracting strategy document defines the type of package, contract, method of payment, engineering responsibility, purchasing of major equipment, purchasing for minor and miscellaneous equipment, installation contractor and the management of the contract package.

The document outlines the scope of work for each package and the strategy for managing both the Contractor and Owner supplied equipment, facilities and services. The above items will be considered carefully and included in the contract scope document write-ups during the tendering phase of the project.

Type and quantity of contracts are listed for the following areas:

- Transportation Contracts (6)
- Service Contracts (Site Support) (8)
- Temporary Infrastructure Buildings EPCM (4)
- Construction Installation Contracts Mine Site (11)
- Permanent Buildings Mine Site (2)
- Construction Installation Contracts Plant Site (5)
- Permanent Buildings Plant Site (3)
- BOO – Build, Own & Operate (1)

Total Packages - 40

Method of payment for contracts:

- Lump Sum – Construction Installation Contracts
- Lump Sum & Unit Rates – Earthworks & Foundations.
- T & M (time and material) Cost Reimbursable – Service Contracts

The majority of the contracts on site will be tendered on a lump sum basis. The level of engineering completion for the tendering process is anticipated at 85% to 90% complete and should be close to 100% complete before the final negotiations and award is complete. This approach will provide the best possible pricing for the Project. Areas that are questionable in a lump sum contract will be adjusted by pre-approved unit rates established during the tendering period.

This approach will minimize the package risk and keep the Project on target for lump sum pricing.

A possible benefit to the Project would be to tender the early packages with preliminary information to confirm pricing for the final estimate. When the detailed design reaches 95% complete the project team will re-issue the revised information to the two low bidders for re-pricing. This will also ensure that the construction program will be ready to start construction on time.

Contracts should include:

- Earthworks (extremely large packages)
- Construction Camps and Site Infrastructure Buildings
- Transportation Contracts

Contract Packages:

Transportation Packages: (6)

- Freight Forwarding
 - Sealift Vessels & Barges
 - Marshalling Yards
- Asset Tracking (RFID)
- Specialty Heavy Transport
- Freight Transportation to Mine Site
- Air Charter (Personnel & Freight)
- Fuel supply & delivery to the Mine Site

Service Contract Packages: (8)

- Site Services Contractor
 - Temporary Construction Power
- Catering, Janitorial, Maintenance & General Camp Management
- Site Security Management Services
- Site Survey Services
- Geotechnical Services
- Site Testing & Inspection Services
- Medical Services Contractor
- Emergency Response Service Contractor

Temporary Infrastructure Buildings: (4)

- Temporary Construction Camps (11)
- EPCM Infrastructure Facilities

- ATCO Foldaway Structures
- Temporary Storage Buildings

Construction Contract Packages:

The Construction Contracts have been divided into the following categories:

Construct Packages – Mine Site (11)

- Ice Road Construction
- Permanent Access Roads
- Earthworks “Site Capture”
 - Water Storage Dam
 - Avalanche Controls
- Tunnel Construction Package #1 Mitchell Site
 - Tunnel Construction Package #2 Plant Site
- Site Wide Foundations
 - Concrete Batch Plant – Supply & Operation
- General Contract – Primary Crushing
 - Site Wide Piping Services Installations
 - Fire Protection
 - Power Distribution
- Temporary Construction Power Supply (both sites)
- Mine Water Treatment Plant
- Power Plants
- Temporary Explosives Manufacturing Facility
- Communications Systems

Permanent Buildings Mine Site (2)

- Mine Truck Shop & Emergency Storage Building
- Permanent Accommodations Complex & Site Facilities, Airport Terminal Building

Construction Packages – Plant Site (5)

- Earthworks “Site Capture”
 - Tailings Disposal & Reclaim Facility
- General Contract – Secondary Crushing/Screening / Processing Plant
 - Site Wide Piping Services Installations
 - Power Distribution
 - Fire Protection
- Bulk Diesel Fuel Storage Facility
- Communication Systems

Permanent Buildings – Plant Site (2)

- Permanent Accommodations Complex & Site Facilities
- Cold Storage Building
 - Administration Building
 - Asset Laboratory and Met Lab Building
 - Warehouse and Maintenance Building
 - Ambulance Building

Boo – Build, Own & Operate (1)

- Permanent Explosives Facility

Major Equipment and Bulk Purchasing

Long lead equipment, and the remaining major equipment or items that may affect the project construction schedule will be purchased by the Owner. This also includes sourcing, tendering, shipping and receiving. Equipment and materials will be shipped to site, stored in the laydown areas and issued to the contractors at mobilization. Preservation of equipment will be the responsibility of the contractors. Owner will be responsible for providing all heavy lift cranes. Contractors will be responsible for transporting equipment to final locations.

The major equipment purchased by the Owner is listed in detail in the Contracting Strategy Spreadsheet.

Modular Program (preliminary)

The local fabrication community of Prince George, the lower mainland areas of Vancouver and possibly Seattle can support the modular program planning for the site. Access to the site is by water using sea barges to Stewart BC and Highway 37 to site using the Eskay Creek access from the north and the Tready Creek access from the south.

The demand for camp space has increased in the past year. Currently 40,000 beds are required to meet the schedules of the large projects planned for 2012 to 2016.

Suggestions for Modules include:

- Temporary Construction Camps (11)
- Permanent Camp Facilities (2)
- Transfer Towers
- Bents
- Conveyer Sections
- Arctic Corridors
- Water & Sewage Treatment Plants
- Large Chutes, Hoppers and Bins
- Process Tanks
- Barges
- Pump Houses
- Substations & E Houses
- Piping Fabrication
- Pre-cast Concrete Sections
- Bridges – Beams & Decking

Assumptions for Site Management & Controls:

- Medical Support and Facilities will be supplied by the Owner. Contractors to provide services to support their project scope of services.
- EPCM Contractor will provide Orientation and a Training Center for the project. Orientations will be provided for all employees and a short program for visitors and truck drivers. The Facility will be available for the contractor's site training requirements.
- Washrooms will be provided and located in various locations throughout the 2 sites. Men and women's facilities will be provided and managed by site services contractor
- Supply of ambulance, fire truck and emergency response vehicles will be provided by the Owner.
- Security support will be provided by the Owner.
- EPCM Contractor will manage the freight transportation to site for Owner's supplied equipment and materials. Contractors will be responsible for the management and delivery of their purchased equipment, materials and consumables.
- EPCM Contractor will provide and manage air transportation to and from the site. The contractor will be responsible to book personnel on all chartered flights
- Graveled laydown areas will be provided by the Owner.
- Contractors are responsible for preservation of equipment in the laydown areas and throughout the construction period to Mechanical completion.
- Heavy lift cranes for off-loading major equipment will be provided and operated by the site services contractor
- Waste Management Facility will be provided by the Owner. Containers will be provided at all work fronts and managed by the site services contractor. Contractor to load and sort materials. Hazardous waste will be managed by the site services contractor.

SEABRIDGE GOLD Inc.		Contract Packaging Approach							May-21-12	Rev 4	KERR-SULPHURETS-MITCHELL PROJECT		
PKG ID	Description	Contractor	Contract	Contract Type	Method of Payment	Design By	Procurement By	Misc Materials Supply By	Installation or Service By	Installation or Service Managed By	PO/Contracts Award	Date Reg'd on Site	Action/Comments/Deliverables
THE LIST OF CONTRACT PACKAGES IS BASED ON THE EPCM MODEL WITH MAJOR CONTRACT PACKAGES COVERING THE MINE SITE, PLANT SITE, TAILINGS MANAGEMENT FACILITY SUPPORTED BY EP - EPC PACKAGES & GENERAL SERVICE PACKAGES													
A TRANSPORTATION CONTRACTS (6)													
1	Freight Forwarding - Scope includes facility, Material & Equipment Receiving, Consolidating in Containers, Developing Shipping Loads in Line with Project Delivery Schedule and Coordinating Sea Barges to Stewart B.C.	TBA	Service	Competitive Bid	Lump Sum Unit Rates	N/A	Contractor	Contractor	Contractor	EPCM		2013	Includes the management of all Project freight, Owners supplied and Contractors. Contractor to provide consolidation yard, security, managment, storage equipment & materials as required, equipment, cranes and experienced tradesmen to load the ships with the materials in the order required by the EPCM contractor. Scope includes detailed ship loading manifests for tracking freight.
	Marshalling Yard (s)	TBA	Service	Competitive Bid	Lump Sum Unit Rates	N/A	Contractor	Contractor	Contractor	EPCM		2013	Marshalling yards at the port sites or close to the port sites for storage of materials and equipment for the shipping season. Yards must be secure and contain covered storage.
2	Asset Tracking (RFID)	TBA	Service	Competitive Bid	Lump Sum	Contractor	Contractor	Contractor	Contractor	EPCM		2013	Contractor to provide RFID barcoding hardware and software specifications, and equipment for tracking project freight, warehousing and laydown areas
3	Specialty Heavy Transport - Scope Includes moving Heavy Equipment from the suppliers to the Marshalling Yards. Coordinating heavy lifts on Barges with the Freight Forwarding Company.	TBA	Service	Competitive Bid	Unit Rates	Contractor	Contractor	Contractor	Contractor	EPCM		2014	Heavy haul loads will be defined during the basic engineering phase and a contractor will be selected to determine the approach and types of vehicles required to move the equipment. Additional coordination will be required loading heavy loads on and off the Sea Barges. It is anticipated that the heavy loads will be transported by large Sea Barges. Road Survey requirements will be completed by the heavy haul contractor after the fabrication locations are determined.
4	Freight Transportation to Mine Site	TBA	Service	Competitive Bid	Unit Rates	Contractor	Contractor	Contractor	Contractor	EPCM		2013/14/15	Contractor to haul equipment and materials from Stewart to the Mine and Plant Site Laydown Areas.
5	Air Charter - Personnel & Freight - Scope includes supplying Air Charters to support the site construction turnaround program. Local & Regional	TBA	Service	Competitive Bid	Unit Rates	N/A	Contractor	Contractor	Contractor	EPCM		2013/14/15/16/17/18/19	Owner will be responsible for all flights to and from the site. Annual contracts will be tendered with third-party air charters for the movement of personnel and air freight to the Mitchell Project Site. This will require several contracts to cover the various carriers, fixed-wing aircraft and helicopters for safety support during the major construction program. As the project mobilizes scheduled flights will be organized from various cities from the provinces and local committees.
6	Fuel Supply and Delivery to Tready Creek Marshalling Yard	TBA	Service	Competitive Bid	Unit Rates	N/A	Contractor	Contractor	Contractor	EPCM		2013/14/15/16/17/18/19	Fuel supply contract will be tendered early in the project to finalize the types of trucks and trailers to be utilized for early works and for main project. The logistics plan will defined the amount of fuel for each season. Remaining objectives are to finalize off-loading procedures and size of trucks to haul the fuel to the various mine site locations..

PKG ID	Description	Contractor	Contract	Contract Type	Method of Payment	Design By	Procurement By	Misc Materials Supply By	Installation or Service By	Installation or Service Managed By	PO/Contracts Award	Date Reg'd on Site	Action/Comments/Deliverables
B	SERVICES CONTRACTS (8)	NOTE: SERVICE CONTRACTS ARE COMMON TO THE MINE & PLANT SITES											
7	SITE SERVICES CONTRACTOR Scope Includes: General Site Maintenance - Infrastructure & the 12 Temporary Construction Camps Transport Freight & Equipment to laydown areas, off-loading and blocking for safety, covering if required. Construct & Operate Waste Management and Sorting Facility General Road Maintenance/Snow Removal - Mine & Plant Sites Construction Waste Pick up & Sorting Sewage Pick up & Disposal Potable Water Supply & Delivery Light Vehicle Maintenance Genset Operation & Maintenance Site Wide Safety Signage - Supply & Install Transport Personnel to and from Airport (1) to Main camps only Supply and Manage Intersite Transportation System Operate and maintain busses Receiving, Transporting & Storage of Material shipped by Air Transporting Fuel to the Main Tank Farms Fuel Dispensing & Reconciliation for Owners Fuel Supply System Manage Back Hauls as Required Construction Water Supply, Storage & Distribution Erect skid mounted portable infrastructure units. Airport Management	TBA - Local	Service	Competitive Bid	T & M Unit Rate	N/A	Contractor	Contractor	Contractor	EPCM		2013	Contractor to provide staff, experienced employees, tools, consumables and minor equipment to support the scope of work for the site services requirements. Contractor to provide materials for general site maintenance of the site wide EPCM infrastructure. The Contractor will provide pick-ups, flat deck, waste pump truck, water truck, garbage truck, fork lifts, heavy lift cranes, trucks, graders, container handling equipment, tractors and high boy trailers for moving equipment to the laydown areas. Detailed list to be provided by the site construction manager. Includes management and storage of Owner supplied cranes. Contractor to supply and maintain rigging for off-loading. The site Services contractor will provide qualified crane operators and riggers to support the off-loading program and general construction support required on site. The services contractor will provide maintenance of all equipment. Owner will provide graded area for infrastructure and equipment storage. Owner will provide all buildings for maintenance and storage of equipment and materials. Scope Includes daily maintenance and cleaning of lunchrooms and washcars in various locations and the supply of paper towels, soap and drinking cups.
	Heavy Lift Cranes (Both Sites)		Rental	Competitive Bid	Unit Rates	N/A	Contractor	Contractor	Contractor	EPCM			EPCM contractor to determine crane requirements for the two sites
	Tool Vans		Rental	Competitive Bid	Cost Plus	N/A	Contractor	Contractor	Contractor	EPCM			Small tools and consumables required to support scope of work
	Rigging Equipment Sea-can		Purchase	Competitive Bid	Cost Plus	N/A	Contractor	Contractor	Contractor	EPCM			As required to support scope of services
	Equipment and General Supplies for Maintenance		Purchase	Competitive Bid	Cost Plus	N/A	Contractor	Contractor	Contractor	EPCM			Contractor will develop a general list for each year for approval before purchasing
	Construction Water Storage Tanks, Pumps & Piping		Purchase	Competitive Bid	Cost Plus	EPCM	EPCM	Contractor	Contractor	EPCM			EPCM contractor to design quick fill system to handle large water trucks. Site services contractor to erect and maintain. EPCM contractor to supply materials
7A	TEMPORARY CONSTRUCTION POWER Scope Includes: Operation & Maintenance of () Gensets Complete with Fuel Systems located at the Mine Site and Plant Site (Size & Number of Gensets to be Confirmed)	TBA	Build	Competitive Bid	T & M	EPCM	EPCM	Contractor	Contractor	EPCM		2013	Contractor to provide experienced tradesmen to operate and maintain the temporary gensets in both locations. Service will be provided 24 hours per day.
	Liner and Berm Installation		Purchase	Competitive Bid	T & M	EPCM	Contractor	Contractor	Earthworks Contractor	EPCM		2013	EPCM contractor will provide specifications for liner supply, installation by earthworks contractor.
	Pre-wired Distribution Panels (12)		Purchase	Competitive Bid	Lump Sum	EPCM	Contractor	Contractor	Site Services Contractor	EPCM		2013	EPCM contractor to provide requirements and specifications. Contractor to provide pre-assembled panels to marshalling yard
	High Voltage Cable (5,000 m)		Purchase	Competitive Bid	Lump Sum	EPCM	EPCM	Contractor	Site Services	EPCM		2013	EPCM contractor to deliver to site for installation by the contractor
	Fencing & Gates		Purchase	Competitive Bid	Lump Sum	EPCM	Contractor	Contractor	Site Services	EPCM		2013	Supplied and installed by the site services contractor
8	CATERING, JANITORIAL & MAINTENANCE & GENERAL CAMP MANAGEMENT SERVICES Scope Includes: 12 Temporary Construction Camps Listed under Temporary Buildings	TBA - Local	Service	Competitive Bid	Unit Rates Daily Rates	N/A	Contractor	Contractor	Contractor	EPCM		2013	Contractor to provide head office support, camp management programs, a professional camp manager (1) for the Mine Site and an assistant camp manager (1) for the Plant site, front office staff, supervision, tradesmen for maintenance, a senior cook, cooks, kitchen assistants and janitorial staff. Scope includes supply and management of food supply and preparation, storage, meal planning, submitting menus for approval and preparation, management of sandwich room for a daily supply of lunches, management dormitory daily cleaning, supply of bedding and cleaning equipment, supply, management of materials and experienced staff for camp maintenance. Includes the supply of laundry detergent and washing soap. Management of the camp construction power, sewage treatment and potable water facilities. Weekly meal plans to be submitted and approved by the EPCM contractor. Contractor to provide an experienced recreation coordinator at the Mine site and Plant site camps.

PKG ID	Description	Contractor	Contract	Contract Type	Method of Payment	Design By	Procurement By	Misc Materials Supply By	Installation or Service By	Installation or Service Managed By	PO/Contracts Award	Date Reg'd on Site	Action/Comments/Deliverables
9	SITE SECURITY MANAGEMENT SERVICES Scope Includes: Site access control and Camp Security	TBA - Local	Service	Competitive Bid	Unit Rates	N/A	Contractor	Contractor	Contractor	EPCM		2013 14	The Owner and the EPCM contractor will define the Security requirements for the Project. Contractor to provide head office support and security management systems for site control and reporting, trained staff, uniforms, equipment, radios and vehicles. Scope includes site access control, general site security & temporary camp security. Coverage will be provided on two shifts per day, seven days per week. Security office will be provided by the Owner. Accommodations and air transportation will be provided by the Owner
	Security X-Ray Machines at the Main Plant Site Camp and the Main Mitchell Site Camp - Supply & Install (2)			Competitive Bid	Lump Sum	EPCM	EPCM	Contractor	Contractor	EPCM		2014	EPCM contractor to supply security equipment at the air terminal buildings, security contractor to operate and train personnel in proper use of equipment. Contractors not living in the two main camps must go through security checks before being transferred to remote camp sites by air shuttle service or bus. Moving and controlling the luggage through the x-ray machine is by the site services contractor and managed by the security personell
10	SITE SURVEY SERVICES Scope Includes: Establish Site Control Points Provide Constructability (Q/A) Checks on New Installations Monitor Construction Quantities for Progress Payments Provide Support for As Built Information	TBA - Local	Service	Competitive Bid	T & M	N/A	N/A	Contractor	Contractor	EPCM		2013 14	Contractor to provide head office support, experienced staff, survey tools and equipment, vehicles and on site drawing services. Includes computers and programs to provide the services on site. Owner will provide office area and storage room for equipment and survey materials. The contractor is to provide all services from site.
11	SITE GEOTECHNICAL SERVICES	TBA - Local	Service	Competitive Bid	T & M	N/A	Contractor	Contractor	Contractor	EPCM		2013	Contractor to provide head office support, supervision, experienced staff and testing equipment and vehicle. Office, accommodation and air transportation provided by the Owner
12	SITE TESTING & INSPECTION SERVICES- By EPCM Scope Includes: Provide Staff & Manage Concrete & Compaction Testing/NDT Inspections, Steel testing etc. Provide Site Testing Facility	TBA - Local	Service	Competitive Bid	T & M	N/A	Contractor	Contractor	Contractor	EPCM		2013	Contractor to provide head office support, supervision, experienced staff, equipment and vehicle. Accommodations and air transportation provide by the Owner. Contractor to provide small testing facility to provide daily results for compaction and concrete testing. Owner will provide office and storage facility for materials.
13	MEDICAL SERVICES CONTRACTOR - By EPCM Scope Includes: Provide Staff & Manage Medical Facility 24 hrs per Day Provide Day to Day Medical Consumables Provide Medical Equipment & Furnishings Consider annual renewal.	TBA - Local	Service	Competitive Bid	Lump Sum	N/A	Contractor	Contractor	Contractor	EPCM		2013	Facility & ambulance (2) provided by the Owner. Contractor to provide trained medical staff, equipment as described by the Site Manager. Accommodation and air transportation provided by the Owner. Facility internal equipment supplied by the Owner; Contractor to provide day to day consumables and general medical treatment equipment. Facility operates 12 hours per day and on call for 12 hours per day.
14	EMERGENCY RESPONSE SERVICE CONTRACTOR Scope Includes: Provide Staff & Manage ER Facilities 24 hrs per day Provide & Maintain ER Equipment Facilities located at Mine Site & Plant Site	TBA - Local	Service	Competitive Bid	Lump Sum	N/A	Contractor	Contractor	Contractor	EPCM		2013	Facility and ER vehicle (2), Fire Trucks (2) will be provide by the Owner. Contractor to provide trained Emergency Response Staff experienced in remote locations. Accommodations and air transportation provided by the Owner. ER services will be provide 12 hours per day and on call for 12 hours per day. Contractors will be requested to supply tradesmen for ER training to support the site emergency response planning for emergencies. Cost for training will be carried in the contractors indirects.

PKG ID	Description	Contractor	Contract	Contract Type	Method of Payment	Design By	Procurement By	Misc Materials Supply By	Installation or Service By	Installation or Service Managed By	PO/Contracts Award	Date Reg'd on Site	Action/Comments/Deliverables
C	TEMPORARY INFRASTRUCTURE BUILDINGS - EPCM (4)			NOTE: INFRASTRUCTURE BUILDINGS ARE PROVIDED FOR ALL SITES									
15	TEMPORARY CONSTRUCTION CAMPS (12) Scope Includes: (EPC Package) Detailed Design, Manufacture, Delivery to Marshalling Yard (s) for Shipping, or Transported Directly to Site Location, Off-Loading Support at Site, Complete Installation of Camp, Dormitories, Kitchen, Food Storage Areas, Sandwich Room, Recreation Area, Waste Incinerator. Camps are fully operational. Includes Gensets complete with Fuel Storage Systems, Water and Sewage Treatment Plants.	TBA	EPC	Competitive Bid	Rental Purchase	Contractor	Contractor	Contractor	Contractor	EPCM			EPCM contractor and Owner to provide general requirements, layouts and specifications. Contractor to design, supply, transport to the marshalling yards, erect & commission the temporary camps. Design to be approved by the Owner before fabrication starts. Contractor to provide mock-ups of the dorm rooms for final approval. Early design will provide for rooms with individual washrooms. Toilet and Shower inside washroom, sink outside in bedroom. Temporary camps come with genset power and fuel system. The Camp includes all facilities, dorms, diner, kitchen, prep areas, recreation facilities complete with exercise equipment, sandwich room, main office, maintenance facilities, sewage, water treatment plants, waste management. Control and communication wiring to be installed in all rooms. Includes external stairs and skirting. Temporary camps will be shipped to site as required on the schedule. Shipping dates and requirements will be provided by the EPCM contractor. The Owner will provide cranes and high boy trucks for erection of camps. The contractor will provide the owner with a fully operational facility, all services tested and commissioned. Training will also be include in the scope for the kitchen staff and maintenance staff.
	Camp #1 - Granduc Staging Camp (80) Person			Competitive Bid	Rental	Contractor	Contractor	Contractor	Contractor	EPCM	2013	2013	Water Treatment and Sewage Treatment Plant to meet regulatory requirements
	Camp #2 - Ted Morris Creek Camp (60) Person			Competitive Bid	Rental	Contractor	Contractor	Contractor	Contractor	EPCM	2013	2014	Incinerators to come with fuel system and storage tank
	Camp #3 - Eskay Creek Minesite Staging Camp (50) Person			Competitive Bid	Rental	Contractor	Contractor	Contractor	Contractor	EPCM	2013	2014	Gensets to be modularized in Sea Cans includes the fuel systems
	Camp #4 - Mitchell North Camp (125) Person			Competitive Bid	Rental	Contractor	Contractor	Contractor	Contractor	EPCM	2013	2014	Gensets will also be utilized for temporary construction power. Additional power requirements will be sized and provided to the contractor during the camp approval phase.
	Camp #5 - Treaty Plant Camp (800) Person			Competitive Bid	Rental	Contractor	Contractor	Contractor	Contractor	EPCM	2013	2014	
	Camp #6 - Treaty Saddle Camp (120) Person			Competitive Bid	Rental	Contractor	Contractor	Contractor	Contractor	EPCM	2013	2015	
	Camp #7 - Unuk North Camp (120) Person			Competitive Bid	Rental	Contractor	Contractor	Contractor	Contractor	EPCM	2013	2014	
	Camp #8 - Unuk South Camp (40) Person			Competitive Bid	Rental	Contractor	Contractor	Contractor	Contractor	EPCM	2013	2014	RENTAL OPTION TO BE REVIEWED WITH CAMP SUPPLIERS
	Camp #9 - Mitchell Initial Camp (140) Person			Competitive Bid	Rental	Contractor	Contractor	Contractor	Contractor	EPCM	2013	2014	
	Camp #10 - Mitchell Secondary Camp (400) Person			Competitive Bid	Rental	Contractor	Contractor	Contractor	Contractor	EPCM	2013	2015	
	Camp #11 - Treaty Creek Camp (60) Person			Competitive Bid	Rental	Contractor	Contractor	Contractor	Contractor	EPCM	2013	2014	
	Camp #12 - Highway 37 Camp (60) Person			Competitive Bid	Rental	Contractor	Contractor	Contractor	Contractor	EPCM	2013	2014	
16	EPCM INFRASTRUCTURE FACILITIES - Modular Construction Scope Includes: Detailed Design, Supply, Manufacture, Delivery to Site or Marshalling Yard (s), Erection and Commissioning of all Units. Partial Installations will be completed by the Site Services Contractor. Facilities include: Office Facilities, WashCars, Orientation & Medical Facilities, Construction Lunch Rooms and Emergency Response Buildings	TBA	Purchase	Competitive Bid	Lump Sum Rental	Contractor	Contractor	Contractor	Contractor	EPCM			
	EPCM Construction Office Facility as Mine Site - 6 Wide Complex (1) EPCM Construction Office Facility at Plant Site - 6 Wide Complex (1) EPCM Remote Site Construction Offices Single Wide 12 x 60 (4) EPCM Remote Site Construction Offices Single Wide 10 x 40 (4) EPCM Construction Office (Tready Creek Marshalling Yard) 24 x 60 (1)		Purchase	Competitive Bid	Lump Sum Rental	Contractor	Contractor	Contractor	Contractor	EPCM		2013 2014 75%	EPCM contractor to provide general requirements. Scope includes detailed design, fabrication, transportation, site erection and commissioning. Owner will provide prepared site and services to the building battery limits. Contractor to provide supervision, labour, materials & equipment to provide operational facilities. The two main offices will be wired for phones and IT services to layouts provided by EPCM contractor. Offices will include external stairs and skirting Internal Furnishing supplied by the EPCM contractor.
	Construction Washrooms (14)		Purchase	Competitive Bid	Lump Sum Rental	Contractor	Contractor	Contractor	Site Services Contractor	EPCM		2013 25% 2014 75%	EPCM contractor to provide general requirements. Washrooms are to contain men's and women's facilities. The portable washroom facilities will be installed in stages. All internal furnishings provided by the Contractor. External sewage holding tank and water storage tank provided by the Contractor. Includes external stairs and skirting.
	Receiving Trailers (2) & Remote Office Trailers(6)		Purchase	Competitive Bid	Lump Sum Rental	Contractor	Contractor	Contractor	Site Services Contractor	EPCM		2014	Same format as office facility above
	Orientation & Training Facility (2)		Purchase	Competitive Bid	Lump Sum Rental	Contractor	Contractor	Contractor	Contractor	EPCM		2014	Same format as office facility above
	Construction Lunch Rooms 100 Person - (4)		Purchase	Competitive Bid	Lump Sum Rental	Contractor	Contractor	Contractor	Contractor	EPCM		2014	Same format as office facility above

PKG ID	Description	Contractor	Contract	Contract Type	Method of Payment	Design By	Procurement By	Misc Materials Supply By	Installation or Service By	Installation or Service Managed By	PO/Contracts Award	Date Reg'd on Site	Action/Comments/Deliverables
	Construction Lunch Rooms 50 Person - (8)		Purchase	Competitive Bid	Lump Sum Rental	Contractor	Contractor	Contractor	Contractor	EPCM		2014	Same format as office facility above
	Construction Lunch Rooms 25 Person - (4)		Purchase	Competitive Bid	Lump Sum Rental	Contractor	Contractor	Contractor	Contractor	EPCM		2014	Same format as office facility above
	Medical Facility at Plant Site (1)		Purchase	Competitive Bid	Lump Sum	Contractor	Contractor	Contractor	Contractor	EPCM		2014	EPCM contractor and Owner to provide general requirement, layouts and specifications for the medical facility. Internal equipment supplied by the Owner.
	Medical Facility at Mitchell Mine Site (1)		Purchase	Competitive Bid	Lump Sum	Contractor	Contractor	Contractor	Contractor	EPCM		2014	As above
	Emergency Response Buildings (2)		Purchase	Competitive Bid	Lump Sum	Contractor	Contractor	Contractor	Contractor	EPCM		2014	EPCM contractor and Owner to provide general requirement, layouts and specifications for the ER facility. Internal equipment supplied by the Owner.
17	ATCO FOLDAWAY STRUCTURES												
	60 x 60 ER Facility (2)	TBA	Purchase	Competitive Bid	Lump Sum	Contractor	Contractor	Contractor	Site Services Contractor	EPCM		2014	EPCM contractor to provide general arrangement, equipment and man-door requirements Contractor to provide a complete packaged Foldaway building structure. Contractor is responsible for shipping to marshalling yard or to site. Erection will be by the site services contractor.
	80 x 150 Construction Operations Warehousing Site (2)	TBA	Purchase	Competitive Bid	Lump Sum	Contractor	Contractor	Contractor	Site Services Contractor	EPCM		2013 14	Same as above
	60 x 100 Construction Operations Warehousing Site (3)	TBA	Purchase	Competitive Bid	Lump Sum	Contractor	Contractor	Contractor	Site Services Contractor	EPCM		2013 14	Same as above - Three required at Tready Creek Marshalling Yard
	60 x 60 Maintenance Shops (6)	TBA	Purchase	Competitive Bid	Lump Sum	Contractor	Contractor	Contractor	Site Services Contractor	EPCM		2014	Same as above
	60 x 60 Incinerator Building (2)	TBA	Purchase	Competitive Bid	Lump Sum	Contractor	Contractor	Contractor	Site Services Contractor	EPCM		2014	Same as above
18	TEMPORARY STORAGE BUILDINGS - Weather Haven Tent Structures												
	100 x 150 Concrete Aggregate Shelters Mine Site (1) x 150 Concrete Aggregate Shelters Plant Site (2)	TBA	Purchase	Competitive Bid	Lump Sum	Contractor	Contractor	Contractor	Site Services Contractor	EPCM		2014	EPCM contractor to provide size and general arrangement for equipment and personnel access doors, purchase and deliver to site. Owner will provide a prepared site. Erection will be by the site services contractor with erection support from the supplier. Facilities will be installed with a compacted gravel base in the batch plant area. 1 located at the MLine Site and 2 located at the Plant Site. Aggregate heating is addressed in the Batch Plant Supply
D	CONSTRUCTION PACKAGES - MINE SITE (11)												
	MINE SITE - EPCM RESPONSIBILITIES												
19	TEMPORARY WINTER ACCESS ROADS - Frank Mackie Glacier Route (41.7 Km Long) Scope Includes: Construction of the Winter Road Access to Ted Morris Creek. Includes Maintenance during Operating Season. Note: Access Road will be required for Three Seasons - 2014/15/16	TBA	Build	Competitive Bid	Lump Sum / Target Price	EPCM	Contractor	Contractor	Contractor	EPCM		2014/15/16	Contractor to provide head office support, supervision, tradesmen, survey control, avalanche controls, all heavy equipment including graders, loaders, water trucks, water pumps and fill piping systems, Ice profiling equipment, augers, fuel trucks, plow trucks, snow blowers, light vehicles and any other additional equipment required to construct and maintain the Ice Road. Contractor to provide infrastructure, including offices, lunchrooms, maintenance facility and refuse stations as required for safety and white outs. Contractor to provide small tools, lubricants and equipment to complete the scope. Contractor to provide fuel to all work fronts. Owner will provide the camp located at Granduc Mine site.
													Detailed Ice Road Program will be provided by the Contractor for approval by the EPCM Contractor and Owner
20	DEVELOP SITE ACCESS ROADS - "SITE WIDE" Scope Includes: Upgrade to Hyw 37 Including Bridges Coulter Creek Access Road & Bridges (37 km) Tready Creek Access Road & Bridges (34 km)	TBA	Build	Competitive Bid	Lump Sum Unit Rates Target Price Contract	EPCM	EPCM	Contractor	Contractor	EPCM		2014	Contractor to provide head office support, supervision, tradesmen, survey control, avalanche controls, all heavy equipment including Screening and Crushing plant (s) dozers, excavators, haul trucks, service trucks, fuel trucks, loaders, graders, water trucks, pumps and compactors required to complete the scope of work. Includes providing spec aggregate materials for the access roads, containments and site requirements. Includes supply of drilling and blasting equipment for the development of the rock quarries and required site cuts. Explosives will be supplied and managed by the Contractor. Contractor to provide infrastructure, including offices, lunchrooms, maintenance facility and bussing if required. Contractor to provide small tools, lubricants and equipment to complete the scope. Contractor to provide fuel to all work fronts. Owner will provide the camp for all roads except the Hyw 37 upgrade portion of the work

PKG ID	Description	Contractor	Contract	Contract Type	Method of Payment	Design By	Procurement By	Misc Materials Supply By	Installation or Service By	Installation or Service Managed By	PO/Contracts Award	Date Reg'd on Site	Action/Comments/Deliverables
	Culvert Supply		Build	Competitive Bid	Lump Sum	EPCM	Contractor	Contractor	Contractor	EPCM		2014	Contractor to supply all materials according to the drawings and specifications
	Bridge Structures		Build	Competitive Bid	Lump Sum	EPCM	EPCM	Contractor	Contractor	EPCM		2014	As Above
	Bin Walls		Build	Competitive Bid	Lump Sum	Contractor	Contractor	Contractor	Contractor	EPCM		2014	As Above
	Lock Blocks & Gabion Baskets		Build	Competitive Bid	Lump Sum	Contractor	Contractor	Contractor	Contractor	EPCM		2014	As Above
	Pre-cast Concrete Foundations		Build	Competitive Bid	Lump Sum	Contractor	Contractor	Contractor	Contractor	EPCM		2014	As Above
	Rock Bolts and Anchors		Build	Competitive Bid	Lump Sum	Contractor	Contractor	Contractor	Contractor	EPCM		2014	As Above
	Rip Rap Supply		Build	Competitive Bid	Unit Rate	EPCM	Contractor	Contractor	Contractor	EPCM		2014	As Above
	Explosives Supply & Management		Build	Competitive Bid	Unit Rate	Contractor	Contractor	Contractor	Contractor	EPCM		2014	As Above
21	MINE SITE EARTHWORKS - "SITE CAPTURE" Scope Includes: Develop General Site Access Roads and Laydown areas Includes Mine Site Clearing, Grubbing, Drill, Blasting for Foundations and producing aggregate materials Set-up Crushers and Develop Quarries. (1) Develop temporary & Permanent Infrastructure pads Drill, Blast, Excavate for Foundation, Rough Grade only Construct Storm Waste Ponds, Diversion Ditches, Waste Rock Drainage Channel and Catchment and Stock Pile Drainage Pond Construct Fuel Containment Berms and Liners Produce, Stock Pile and transport Concrete Aggregate to Batch Plant Produce & Stock Pile Engineered Aggregates for the Construction Program Construct Pipe Bed to the Fresh Water Intake Develop Landfill for Waste Materials	TBA	Build	Competitive Bid	Lump Sum Unit Rates	EPCM	Contractor	Contractor	Contractor	EPCM		2014	Contractor to provide head office support, supervision, tradesmen, Survey control, all heavy equipment including Screening and Crushing plant (s) dozers, excavators, haul trucks, service trucks, fuel trucks, loaders, graders, water trucks, pumps and compactors required to complete the scope of work. Includes providing spec aggregate materials for the access roads, containments and site requirements. Includes supply of drilling and blasting equipment for the development of the rock quarries and required site cuts. Explosives will be supplied from the site Temporary Explosives Plant and issued to the contractor. Contractor will transport and load their sites. Owner to provide infrastructure, lunchrooms, washrooms, medical & ER maintenance and bussing if required. Contractor to office, tool vans, small tools, lubricants and equipment to complete the scope. Owner to provide fuel.
	Culverts		Build	Competitive Bid	Lump Sum	EPCM	EPCM	Contractor	Contractor	EPCM		2014	EPCM contractor will provide culverts located at the laydown areas
	Portable Crushers		Build	Competitive Bid	Unit Rates	EPCM	Contractor	Contractor	Contractor	EPCM		2014	Contractor to supply portable crushing plants sized to meet the requirement of the project
	Liner Supply and Install		Build	Competitive Bid	Unit Rates	EPCM	Contractor	Contractor	Contractor	EPCM		2014	EPCM contractor will provide specifications for liner supply and installation
21A	WATER STORAGE DAM: Scope Includes: Construction of Water Storage Dam & WSF Seepage Dam. Includes Logging & Storage of Trees, Clearing/Grubbing, Excavations, Hauling Materials, Processing of Materials as Required		Build	Competitive Bid	Unit Rates	EPCM	Contractor	Contractor	Contractor	EPCM		2014/15	Contractor supplies equipment and materials as explained above. This is part of the Mine Site Earthworks program. NOTE: MAJOR FILL WILL BE COMPLETED BY THE OWNER'S FLEET OF LARGE EQUIPMENT - 2016,17 & 18
21B	AVALANCHE CONTROLS: Scope Includes: Construction of Water Storage Dam & WSF Seepage Dam. Includes Logging & Storage of Trees, Clearing/Grubbing, Excavations, Hauling Materials, Processing of Materials as Required	TBA	Build	Competitive Bid	Unit Rates	EPCM	Contractor	Contractor	Contractor	EPCM		2014 2015 2016 2017	Contractor to provide head office support, supervision, tradesmen, Survey control, all heavy equipment including drilling machines, bolting equipment. scoop trams,service trucks, fuel trucks, loaders, graders, water trucks, pumps and compactors required to complete the scope of work.
	Lock Blocks & Gabion Baskets		Build	Competitive Bid	Lump Sum	Contractor	Contractor	Contractor	Contractor	EPCM			As Above
	Pre-cast Concrete Foundations		Build	Competitive Bid	Lump Sum	Contractor	Contractor	Contractor	Contractor	EPCM			As Above
	Rock Bolts and Anchors		Build	Competitive Bid	Lump Sum	Contractor	Contractor	Contractor	Contractor	EPCM			As Above
	Rip Rap Supply		Build	Competitive Bid	Lump Sum	EPCM	Contractor	Contractor	Contractor	EPCM			As Above
22A	TUNNELLING PACKAGE #1 MINE SITE - Scope Includes: Mitchell-Tiegen Tunnel (MTT) Approximately 10 Km Mitchell Diversion Tunnel (MDT) 6.3 Km McTagg Diversion Tunnel (MTDT) 4.2 Km Construction Diversion Tunnel (CDT) Approximately 900 m Package can also be tendered with Tunnelling Package #2	TBA	Build	Competitive Bid	Unit Rates	EPCM	Contractor	Contractor	Contractor	EPCM		2014	Contractor to provide head office support, supervision, tradesmen, Survey control, all heavy equipment including drilling machines, bolting equipment. scoop trams,service trucks, fuel trucks, loaders, graders, water trucks, pumps and compactors required to complete the scope of work. Aggregate materials for the tunnel containments and site requirements. Explosives will be supplied from the site Temporary Explosives Plant and issued to the contractor. Contractor will transport and load their sites. Owner to provide lunchrooms, washrooms and bussing if required. Contractor to provide offices, tool vans, small tools, lubricants and equipment to complete the scope. Owner to provide fuel. Contractor to transport to equipment locations
	Drilling Consumables		Build	Competitive Bid	Unit Rates	Contractor	Contractor	Contractor	Contractor	EPCM		2014	Contractor to supply as per the specifications.
	Rock Bolts & Anchors		Build	Competitive Bid	Unit Rates	Contractor	Contractor	Contractor	Contractor	EPCM		2014	As above
	Wire Mesh		Build	Competitive Bid	Unit Rates	Contractor	Contractor	Contractor	Contractor	EPCM		2014	As above
	Aggregates for Ramp Base		Build	Competitive Bid	Unit Rates	Contractor	Contractor	Contractor	Contractor	EPCM		2014	As above

PKG ID	Description	Contractor	Contract	Contract Type	Method of Payment	Design By	Procurement By	Misc Materials Supply By	Installation or Service By	Installation or Service Managed By	PO/Contracts Award	Date Reg'd on Site	Action/Comments/Deliverables
22B	TUNNELLING PACKAGE #2 PLANT SITE - Scope Includes: Mitchell-Tiegen Tunnel (MTT) Approximately 14 Km East Catchment Tunnels (ECT) Approximately 4 Km Package can also be tendered with Tunnelling Package #1	TBA	Build	Competitive Bid	Unit Rates	EPCM	Contractor	Contractor	Contractor	EPCM		2014	Contractor to provide head office support, supervision, tradesmen, Survey control, all heavy equipment including drilling machines, bolting equipment, scoop trams, service trucks, fuel trucks, loaders, graders, water trucks, pumps and compactors required to complete the scope of work. Aggregate materials for the tunnel containments and site requirements. Explosives will be supplied from the site Temporary Explosives Plant and issued to the contractor. Contractor will transport and load their sites. Owner to provide lunchrooms, washrooms and bussing if required. Contractor to provide offices, tool vans, small tools, lubricants and equipment to complete the scope. Owner to provide fuel. Contractor to transport to equipment locations
	Drilling Consumables		Build	Competitive Bid	Unit Rates	Contractor	Contractor	Contractor	Contractor	EPCM		2014	Contractor to supply as per the specifications.
	Rock Bolts & Anchors		Build	Competitive Bid	Unit Rates	Contractor	Contractor	Contractor	Contractor	EPCM		2014	As above
	Wire Mesh		Build	Competitive Bid	Unit Rates	Contractor	Contractor	Contractor	Contractor	EPCM		2014	As above
	Aggregates for Ramp Base		Build	Competitive Bid	Unit Rates	Contractor	Contractor	Contractor	Contractor	EPCM		2014	As above
23	SITE WIDE FOUNDATIONS - Mine Site Scope Includes: Primary and Secondary Crusher Foundations, Crusher Retaining Wall, Portal Entrance Foundations & Walls, Coarse Ore Storage Tunnel Foundations, Transfer Towers and Bent Foundations, Sub-Stations and Fuel Module Foundations, Truckshop, 350 Person Camp Foundations, Emergency Services Building Foundations Possible to combine with Plant Site Foundations	TBA	Build	Competitive Bid	Unit Rates	EPCM	Contractor	Contractor	Contractor	EPCM		2014	Contractor to supply head office support, supervision, tradesmen, final grade excavation, equipment. Scope includes form and shoring design, detailed excavations, trenching, fabrication and installation of forms, backfill, compaction, heating and hoarding, installation of concrete and finishing. Contractor to provide miscellaneous materials. Contractor is responsible for off-loading, storage, and transportation of equipment to work site locations from laydown areas. Contractor to provide cranes & trucks to transport materials and equipment. Owner will provide graded lay down areas, a prepared construction site, construction water, construction power and camp facility. Camp facility will be billed directly to the contractor. Concrete plant will be erected on site and managed by the foundations contractor. Includes batching and delivery of concrete to their scope and if required to other contractors on site. Contractor to turnover foundations after all testing activities listed above are completed.
	Reinforcing, Anchor Bolts, Embedded Materials Supply & Install			Competitive Bid	Unit Rates	Contractor	Contractor	Contractor	Contractor	EPCM		2014	Contractor is responsible for take-off, purchase, pre-fabrication of reinforcing, anchor bolts and embedded materials, shipping to marshalling yard and installation
	Prefabricated Forms, Shoring, Scaffolding Supply & Install			Competitive Bid	Unit Rates	Contractor	Contractor	Contractor	Contractor	EPCM		2014	Contractor to pre-fab formwork on site due to shipping restraints
	Heating & Hoarding Equipment Supply & Install			Competitive Bid	Unit Rates	Contractor	Contractor	Contractor	Contractor	EPCM		2014	Contractor to provide all equipment, service and fuel all equipment for heating and hoarding
23A	CONCRETE BATCH PLANT - SUPPLY Scope Includes: One 80 Cubic Meters/Hr Plant located at Mine Site												EPCM contractor will provide specifications for the batch plant. The contractor will provide final design, including building, equipment and delivery equipment. The contractor will erect the facility and commission.
	Complete Batch Operational Batch Plant		Purchase	Competitive Bid	Lump Sum Unit Rates	EPCM	EPCM	Contractor	Contractor	EPCM		2014	The Contractor to supply the complete facility and delivery to site. The Foundation contractor to erect and commission the facility. The facilities will be operated and maintained by the Site Wide Foundations Contractor.
	Mixer (Drum) Trucks, Pump Trucks, Water Truck, Fuel Truck, Loaders		Purchase	Competitive Bid	Lump Sum	EPCM	EPCM	Contractor	Contractor	EPCM		2014	Owner to purchase and deliver to site. Service contractor to maintain, operated by the Foundations Contractor. 4 mixer trucks required at each location total of (8) 1 pump truck in each location, 1 water truck, 1 fuel truck, 1 zoom boom and 2 loaders in each location.
	Cement Powder		Purchase	Competitive Bid	Lump Sum	EPCM	EPCM	Contractor	Contractor	EPCM		2014 2015 2016 2017	Owner to purchase and deliver to site as required to support the foundations program. Contractor is responsible for moving cement to the batch plant from the storage areas
	Concrete Additives		Purchase	Competitive Bid	Lump Sum	EPCM	EPCM	Contractor	Contractor	EPCM		2014 2015 2016 2017	Owner to purchase and deliver to site. Contractor is responsible for storing and managing the supply to the batch plant.
	Aggregate Supply		N/A	N/A	N/A	N/A	N/A	N/A	Contractor	EPCM		2014 2015 2016 2017	Supplied to the batch plant stock pile by the earthworks contractor
	Aggregate Storage Facility & Steam unit.		Purchase	Competitive Bid	Lump Sum	Contractor	Contractor	Contractor	Contractor	EPCM		2014 2015 2016 2017	Storage building and Steam Unit is supplied by the contractor and erected by the batch plant operator. Steam Unit and piping install by the batch plant operator

PKG ID	Description	Contractor	Contract	Contract Type	Method of Payment	Design By	Procurement By	Misc Materials Supply By	Installation or Service By	Installation or Service Managed By	PO/Contracts Award	Date Reg'd on Site	Action/Comments/Deliverables
24	GENERAL CONTRACT - PRIMARY CRUSHING, COARSE ORE FEED CONVEYOR - STOCKPILE CONVEYORS - VERTICAL PACKAGE - ANCHOR BOLT UP Scope Includes: Structural Steel, Cladding, Major Equipment installations, Mechanical, Conveyor Modules, Piping, Electrical, Instrumentation, check-out to mechanical completion and pre-commissioning support.	TBA	Build	Competitive Bid	Lump Sum	EPCM	EPCM	Contractor	Contractor	EPCM		2014	Foundations and anchor bolts installed by the Foundations Contractor. Crusher Erection Contractor to supply head office support, supervision, tradesmen and equipment. Scope includes, steel erection, erection of owner supplied equipment, installation of electrical and instrumentation cable distribution, E House installations, secondary steel, stairs, handrail, grating, interior finishes, control rooms, MCC rooms, piping, pipe supports, valves, specialty hangers. Contractor to provide miscellaneous materials. Owner is responsible for moving and off-loading materials in the laydown areas. Storage buildings are supplied by the Owner. Heating & hoarding, if required, preservation and transportation of equipment to final location from the laydown areas is the responsibility of the contractor. Heavy lift cranes, operators and rigging supplied by the site services contractor. Owner will provide graded lay down areas, a prepared construction site, construction water, construction power and camp facility. Camp facility will be billed directly to the contractor. Site infrastructure, offices, lunchrooms, washrooms and storage shops will be provided by the Owner. Contractor to turnover the facility when mechanically complete.
	Building (s) Structural Steel, Stair towers, Handrail & Grating & Cladding		Purchase	Competitive Bid	Lump Sum	EPCM	EPCM	Contractor	Contractor	EPCM		2015	EPCM Contractor to supply and deliver to site for off-loading by the General Contractor
	60" X 90" Primary Crusher - Gyratory (2)		Purchase	Competitive Bid	Lump Sum	EPCM	EPCM	Contractor	Contractor	EPCM		2015	As above
	Hydraulic Rock Breaker (2)		Purchase	Competitive Bid	Lump Sum	EPCM	EPCM	Contractor	Contractor	EPCM		2015	As above
	Monorail Crusher Discharge Feed		Purchase	Competitive Bid	Lump Sum	EPCM	EPCM	Contractor	Contractor	EPCM		2015	As above
	Primary Crusher Apron Feeders (2)		Purchase	Competitive Bid	Lump Sum	EPCM	EPCM	Contractor	Contractor	EPCM		2015	As above
	Chutes & Hoppers (Pre-fabricated)		Purchase	Competitive Bid	Lump Sum	EPCM	EPCM	Contractor	Contractor	EPCM		2015	As above
	Primary Crusher Feed Conveyors (96") to Coarse Ore Stock Pile (Modules)		Purchase	Competitive Bid	Lump Sum	EPCM	EPCM	Contractor	Contractor	EPCM		2015	
	Coarse Ore Reclaim Conveyors (Modules)		Purchase	Competitive Bid	Lump Sum	EPCM	EPCM	Contractor	Contractor	EPCM		2015	
	Course Ore Stockpile Feed Conveyors to Teigen Tunnel (Modules)		Purchase	Competitive Bid	Lump Sum	EPCM	EPCM	Contractor	Contractor	EPCM		2015	EPCM contractor to provide conveyor modules, shipped to site complete minus belting
	Mitchell Creek Penstock (Steel Pipe Installation)		Purchase	Competitive Bid	Lump Sum	EPCM	EPCM	Contractor	Contractor	EPCM		2015	EPCM Contractor to specify, purchase and delivery materials to site
	Belt scales, Magnets & Samplers		Purchase	Competitive Bid	Lump Sum	EPCM	EPCM	Contractor	Contractor	EPCM		2015	EPCM Contractor to supply and deliver to site for off-loading by the General Contractor
	Hydraulic Power Packs											2015	
	Blowers, Dryers, Compressor Systems		Purchase	Competitive Bid	Lump Sum	EPCM	EPCM	Contractor	Contractor	EPCM		2015	As above
	Conveyor Belting Supply		Purchase	Competitive Bid	Lump Sum	EPCM	EPCM	Contractor	Contractor	EPCM		2015	As above
	Conveyor Belting Install - Includes Fusing		Purchase	Competitive Bid	Lump Sum	EPCM	EPCM	Contractor	Contractor	EPCM		2015	
	Conveyor drives, Motors & Guards		Purchase	Competitive Bid	Lump Sum	EPCM	EPCM	Contractor	Contractor	EPCM		2015	As above
	Diverter Gate Chutes		Purchase	Competitive Bid	Lump Sum	EPCM	EPCM	Contractor	Contractor	EPCM		2015	
	Sampler Chute Analyzers		Purchase	Competitive Bid	Lump Sum	EPCM	EPCM	Contractor	Contractor	EPCM		2015	As above
	Rotary Valves		Purchase	Competitive Bid	Lump Sum	EPCM	EPCM	Contractor	Contractor	EPCM		2015	As above
	Pumps		Purchase	Competitive Bid	Lump Sum	EPCM	EPCM	Contractor	Contractor	EPCM		2015	As above
	Overhead Cranes / Hoists / Monorails		Purchase	Competitive Bid	Lump Sum	EPCM	EPCM	Contractor	Contractor	EPCM		2015	As above
	Piping, Manual Valves, Fittings, Hangers & Support Steel		Purchase	Competitive Bid	Lump Sum	EPCM	Contractor	Contractor	Contractor	EPCM		2015	Contractor to supply and deliver to marshalling yard for shipping to site
	Control Valves		Purchase	Competitive Bid	Lump Sum	EPCM	EPCM	Contractor	Contractor	EPCM		2015	As above
	Electrical Tray, Fittings & Support Steel		Purchase	Competitive Bid	Lump Sum	EPCM	Contractor	Contractor	Contractor	EPCM		2015	Contractor to supply and deliver to marshalling yard for shipping to site
	Interior & Exterior Lighting & Poles		Purchase	Competitive Bid	Lump Sum	EPCM	Contractor	Contractor	Contractor	EPCM		2015	Contractor to supply and deliver to marshalling yard for shipping to site
	Grounding		Purchase	Competitive Bid	Lump Sum	EPCM	Contractor	Contractor	Contractor	EPCM		2015	Contractor to supply and deliver to marshalling yard for shipping to site
	Electrical Equipment - MCC's, Switch Gear		Purchase	Competitive Bid	Lump Sum	EPCM	EPCM	Contractor	Contractor	EPCM		2015	As above
	Electrical Cabinets		Purchase	Competitive Bid	Lump Sum	EPCM	Contractor	Contractor	Contractor	EPCM		2015	As above
	Instruments		Purchase	Competitive Bid	Lump Sum	EPCM	EPCM	Contractor	Contractor	EPCM		2015	As above
	"E" House's		Purchase	Competitive Bid	Lump Sum	EPCM	EPCM	Contractor	Contractor	EPCM		2015	EPCM contractor to provide general arrangement drawings & specifications. Major equipment will be supplied by the Owner. E House will be assembled off site and shipped to site commissioned ready for cable tie-ins by the contractors. E House will be installed by the General Contractor
	Control System Equipment (Confirm System)		Purchase	Competitive Bid	Lump Sum	EPCM	EPCM	Contractor	Contractor	EPCM		2015	Program, program set-up, installation and commissioning by EPCM contractor
	Bulk Electrical Cable		Purchase	Competitive Bid	Lump Sum	EPCM	EPCM	Contractor	Contractor	EPCM		2015	Contractor to supply and deliver to marshalling yard for shipping to site
	Interior Finishing Materials		Purchase	Competitive Bid	Lump Sum	EPCM	Contractor	Contractor	Contractor	EPCM		2015	Contractor to supply and deliver to marshalling yard for shipping to site
	Fire Detection Systems		Purchase	Competitive Bid	Lump Sum	EPCM	Contractor	Contractor	Contractor	EPCM		2015	EPCM to design, Contractor to supply & install. Does not include permanent buildings erected by others

PKG ID	Description	Contractor	Contract	Contract Type	Method of Payment	Design By	Procurement By	Misc Materials Supply By	Installation or Service By	Installation or Service Managed By	PO/Contracts Award	Date Reg'd on Site	Action/Comments/Deliverables
24A	FIRE PROTECTION INSTALLATION - Material Handling Scope includes: Crushing, Conveying, and Conveyor Galleries		Build	Competitive Bid	Lump Sum	Contractor	Contractor	Contractor	Contractor	EPCM		2017	Contractor to supply head office support, supervision, tradesmen, minor equipment. Heavy equipment supplied by the site services contractor. Detailed design to be approved by the Local Regulatory Agency. Scope includes installation of fire protection piping systems from the battery limits in each area, also includes pipe supports, specialty hangers. Contractor to provide miscellaneous materials. Materials will be moved from the laydown areas to the site by the contractor. Contractor to turnover the fire protection systems after hydro-testing and when mechanically complete.
	Pipe, Fittings, Valves, Instrumentation		Purchase	Competitive Bid	Lump Sum	Contractor	Contractor	Contractor	Contractor	EPCM		2017	Contractor supplies all materials.
24B	SITE WIDE PIPING SERVICES INSTALLATIONS Scope Includes: Fire Protection Piping Fuel Supply Systems Including Tank Farm Piping Setting and completing Dispensing Modules Effluent Discharge piping Fresh Water Intake Piping & Distribution HDPE Piping To and From Ponds	TBA	Build	Competitive Bid	Lump Sum	EPCM	EPCM	Contractor	Contractor	EPCM		2016 2017 2018	Contractor to supply head office support, supervision, tradesmen and minor equipment. Scope includes trenching, backfill, compaction, installation of piping systems to battery limits, pipe supports, specialty hangers and specialty welding including HDPE butt fusing. Contractor to provide miscellaneous materials. Owner will provide graded lay down areas, a prepared construction site, construction water, construction power and camp facility. Equipment required for the installation will be supplied by the site services contractor. But Fusing machines will be provided by the installation contractor. Camp facility will be billed directly to the contractor. Infrastructure will be provided by the Owner. Concrete will be installed by the foundations contractor. Contractor to turnover the piping systems after hydro-testing and when mechanically complete.
	Fire, Fuel, Water & Sewage Pipe & Fittings Supply & Install		Purchase	Competitive Bid	Lump Sum	EPCM	Contractor	Contractor	Contractor	EPCM			EPCM contractor to provide pipe specifications and installation procedures
	Sewage Tanks		Purchase	Competitive Bid	Lump Sum	EPCM	Contractor	Contractor	Contractor	EPCM			EPCM contractor to provide control valve specifications and installation procedures
	Control Valves		Purchase	Competitive Bid	Lump Sum	EPCM	Contractor	Contractor	Contractor	EPCM			EPCM contractor to specify, purchase & deliver to site for installation by the contractor
	Instrumentation		Purchase	Competitive Bid	Lump Sum	EPCM	Contractor	Contractor	Contractor	EPCM			EPCM contractor to specify, purchase & deliver to site for installation by the contractor
	HDPE Pipe & Fittings		Purchase	Competitive Bid	Lump Sum	EPCM	EPCM	Contractor	Contractor	EPCM			Contractor responsible for off-loading & storage of Owner supplied HDPE pipe/fittings
	Fuel Dispensing Modules		Purchase	Competitive Bid	Lump Sum	EPCM	EPCM	Contractor	Contractor	EPCM			Designed and supplied by the Owner and shipped to the laydown areas.
24C	POWER DISTRIBUTION Scope Includes: Installation of Sub Stations / E Houses - Modularized Out Side Site Wide Power Distribution - Overhead & Surface Cabling		Build	Competitive Bid	Lump Sum Unit Rates	EPCM	EPCM	Contractor	Contractor	EPCM		2013	Contractor to supply head office support, supervision, tradesmen minor equipment to complete the scope of work. Foundation prep and installation by others. Contractor to turnover the facility when mechanically complete.
	Sub Station/E Houses Supply		Purchase	Competitive Bid	Lump Sum	EPCM	EPCM	Contractor	Contractor	EPCM		2014	Substations / E Houses will be supplied to site as a module by the Owner, complete with equipment and internal wiring installed and commission ready for terminations by the contractor
	High Voltage Cable		Purchase	Competitive Bid	Lump Sum	EPCM	EPCM	Contractor	Contractor	EPCM		2014	Owner to supply and deliver to laydown areas
	High Voltage Fittings & Connectors		Purchase	Competitive Bid	Lump Sum	EPCM	EPCM	Contractor	Contractor	EPCM		2014	Owner to supply and deliver to laydown areas
	Power Poles		Purchase	Competitive Bid	Lump Sum	EPCM	EPCM	Contractor	Contractor	EPCM		2014	Owner to supply and deliver to laydown areas. If drilling is required it will be supplied by the piling contractor
25	TEMPORARY CONSTRUCTION POWER SUPPLY Scope Includes: Supply of Gensets Complete with Fuel Systems - Four located at the Mine Site and Four located at the Plant Site. (Amount & Size to be confirmed) Units to be synchronized to one distribution system.	TBA	Build	Competitive Bid	Lump Sum	Contractor	EPCM	Contractor	Contractor	EPCM		2014	Contractor to supply head office support, supervision, tradesmen, equipment, transportation and support infrastructure to complete the scope of work. Foundations for containerized gensets installed by the foundations contractor. Scope includes erection of gensets, fuel systems, interconnecting piping, misc equipment, electrical and instrumentation. Distribution panels, cabling and termination from the main power panels will be installed by the site services contractor to final locations. Contractor to provide miscellaneous materials. Owner is responsible for off-loading and storage. Heated storage, if required, preservation and transportation of equipment to final location is the responsibility of the Owner. Owner will provide graded lay down areas, a prepared construction site, construction water, construction power and camp facility. Camp facility will be billed directly to the contractor. Site infrastructure provided by the Owner. Contractor to turnover the fully operational facility including distribution system when mechanically complete.
	Modularized Gensets c/w Fuel Systems		Purchase	Competitive Bid	Lump Sum	EPCM	EPCM	Contractor	Contractor	EPCM		2014	EPCM contractor will provide general requirements, contractor to finalize design and module for approval by the owner
26	TEMPORARY EXPLOSIVES MANUFACTURING FACILITY - One Located at Mine Site and One Located at the Plant Site Scope Includes: Temporary Modular Facility, Emulsion Delivery Trucks, Wash Facility	TBA	BOO	Competitive Bid	Lump Sum Unit Rates	Contractor	Contractor	Contractor	Site Services Contractor	EPCM		2014	EPCM contractor to define requirements. Contractor to design, fabricate, ship and erect to fully operational facility. Infrastructure supplied by the Owner. Contractor to supply all vehicles for delivery and transportation of equipment
	Explosives Supply												

PKG ID	Description	Contractor	Contract	Contract Type	Method of Payment	Design By	Procurement By	Misc Materials Supply By	Installation or Service By	Installation or Service Managed By	PO/Contracts Award	Date Reg'd on Site	Action/Comments/Deliverables
27	MINE SITE WATER TREATMENT PLANT Scope Includes: Detailed Design, Supply & Erection of Fully Operational Water Treatment Plant - To be Delivered in Modules	TBA	EPC	Competitive Bid	Lump Sum	Contractor	Contractor	Contractor	Contractor	EPCM		2014	EPCM contractor to define requirements. Contractor to design, fabricate, ship and erect to fully operational facility. Infrastructure supplied by the Owner. Contractor to supply all vehicles for delivery and transportation of equipment
	Processing Equipment			Competitive Bid	Lump Sum	Contractor	Contractor	Contractor	Contractor	EPCM		2014	
	Lime			Competitive Bid	Lump Sum	EPCM	EPCM	Contractor	Contractor	EPCM		2014	Owner to set up supply Contract for Operations
28	POWER PLANT (1) - Located at Mctagg Diversion Exit. Scope Includes: Detailed Design, Supply & Erection of Fully Operational Modular Facility	TBA	EPC	Competitive Bid	Lump Sum	Contractor	Contractor	Contractor	Contractor	EPCM		2014	EPCM contractor to define requirements. Contractor to design, fabricate, ship and erect to fully operational facility. Infrastructure supplied by the Owner. Contractor to supply all vehicles for delivery and transportation of equipment
	Processing Equipment			Competitive Bid	Lump Sum	Contractor	Contractor	Contractor	Contractor	EPCM		2014	
29	COMMUNICATION SYSTEMS Scope Includes: Microwave Towers at Mine Site & Plant Site Satellite Earth-Station for Back-up Communications Site Wireless Network System includes UPS Power Supply Satellites on Towers for Camps and Site Infrastructure 2-Way Radio Equipment Also consider temporary communication systems	TBA	Build	Competitive Bid	Lump Sum	EPCM	EPCM	Contractor	Contractor	EPCM		2013 2014 2015	The communication package may be broken down and award to various contractors, during the detailed design and system identification suppliers and contractors may be packaged differently. Contractors to supply head office support, supervision, tradesmen, equipment, transportation to complete the scope of work. Scope includes installation of radio system and tower, cabling for building, voice data equipment for all buildings, towers/poles for wireless access points CATV for camps. Contractor to provide miscellaneous materials. Contractor is responsible storage, heated if required, preservation and transportation of equipment to final location. Owner will provide site infrastructure and vehicles for transportation around site. Contractor to turnover the facility when commissioned and operational.
	Supply and Installation of Multi Towers (Main Sites Only)		Purchase	Competitive Bid	Lump Sum	Contractor	Contractor	Contractor	Contractor	EPCM			Includes radio towers, base stations, vehicle radios and mobile handsets
	Internet, Voice & Data Equipment		Purchase	Competitive Bid	Lump Sum	Contractor	Contractor	Contractor	Contractor	EPCM			Includes routers, switches, controllers, servers, security firewall, modems and all other requirements to complete the system.
	Communications Cable		Purchase	Competitive Bid	Lump Sum	Contractor	Contractor	Contractor	Contractor	EPCM			
	2-Way Radio Equipment		Purchase	Competitive Bid	Lump Sum	EPCM	Contractor	Contractor	Contractor	EPCM			EPCM contractor to provide requirements, purchase and supply to site for the construction program
E PERMANENT BUILDINGS - MODULAR - MINE SITE													
30	PERMANENT ACCOMMODATION COMPLEX & SITE FACILITIES Scope Includes: Complete Operational Facility at Mine Site 1 - 350 Person Facility - Single Rooms Complete with Washrooms. Includes Kitchen, Dining Room, Food Storage & Preparation Areas, Recreation Facilities & Equipment, Laundry Service, Sewage Treatment Plant & Water Treatment Plant	TBA	EPC	Competitive Bid	Lump Sum	Contractor	Contractor	Contractor	Contractor	EPCM		2015	EPCM to provide general arrangement drawings. Contractor to provide detailed design, supply, transport, erect & commission a 350 person permanent camp facility. Scope Includes supply of supervision, tradesmen, equipment and infrastructure to support the scope of work. Permanent power will be supplied by the Owner later in the project. Fuel for construction managed by the contractor. Final internal walkways, roads, fencing and landscaping is by the contractor. Owner will provide level & compacted site to suite the footprint of the camp. Security System and Security Service will be provided by the Owner. Internal wiring by the contractor. Interior furnishings supplied by the Contractor. Contractor to turnover a fully operational facility upon completion.
	Single Storey with Center Core Facility Scope Includes : Walkways, Mudroom Entrances & Stairwells Propane storage area			Competitive Bid	Lump Sum	Contractor	Contractor	Contractor	Contractor	EPCM		2015	Contractor to provide a mock-up of the single room accommodations for review by the Owner and EPCM contractor.
	Potable Water Treatment Plant and Potable Water Tank			Competitive Bid	Lump Sum	Contractor	Contractor	Contractor	Contractor	EPCM		2015	Contractor to provide detailed layout and type of equipment for approval by the EPCM Contractor.
	Incinerator Supply & Install			Competitive Bid	Lump Sum	Contractor	Contractor	Contractor	Contractor	EPCM		2015	As above
	Sewage Treatment Plant Supply & Install			Competitive Bid	Lump Sum	Contractor	Contractor	Contractor	Contractor	EPCM		2015	As above
	Kitchen Equipment, Coolers & Appliances Supply & Install			Competitive Bid	Lump Sum	Contractor	Contractor	Contractor	Contractor	EPCM		2015	Contractor to establish requirements and recommend equipment for approval
	Recreation, Dining Rm & Dorm Furnishings Supply & Install			Competitive Bid	Lump Sum	Contractor	Contractor	Contractor	Contractor	EPCM		2015	Contractor to establish requirements and recommend equipment for approval

PKG ID	Description	Contractor	Contract	Contract Type	Method of Payment	Design By	Procurement By	Misc Materials Supply By	Installation or Service By	Installation or Service Managed By	PO/Contracts Award	Date Reg'd on Site	Action/Comments/Deliverables
31	MINE TRUCK SHOP Scope Includes: Complete facility, Tire Change Shop, Truck Wash, Light Vehicle Repair Shop, Warehousing, Welding Shop, Heavy Vehicle Repair Bays, Lube Bays, Offices, and Exterior Landscaping	TBA	EPC	Competitive Bid	Lump Sum	Contractor	Contractor	Contractor	Contractor	EPCM		2014	EPCM Contractor will supply general arrangements and specifications for equipment. Contract to supply head office support, supervision, tradesmen, equipment, transportation and support infrastructure to complete the scope of work. Scope includes detailed design, procurement of internal equipment, foundation prep and installation, steel erection, erection of owner supplied equipment, electrical and instrumentation, secondary steel, stairs, handrail, grating, interior finishes, control rooms, MCC rooms, piping, pipe supports, specialty hangers. Contractor to provide all equipment and materials to complete the installation. Contractor is responsible for off-loading, storage, heated if required, preservation and transportation of equipment to final location. Owner will provide graded lay down areas, a prepared construction site, construction water, construction power and camp facility. Camp facility will be billed directly to the contractor. Concrete will be available for purchase on site by the contractor. Contractor to turnover a fully operational facility upon completion.
	Contractor Supply												
	Building Steel, Cladding, Stairways & Exit Doors for building			Competitive Bid	Lump Sum	Contractor	Contractor	Contractor	Contractor	EPCM		2014	EPCM contractor to provide General Arrangement drawings and Specifications. Contractor to provide final detailed design, purchases, and deliver to marshalling area and erect.
	Repair Bay & Lube Bay Roll-Up Doors			Competitive Bid	Lump Sum	Contractor	Contractor	Contractor	Contractor	EPCM		2014	EPCM contractor to provide Specifications
	50 Ton /20 Ton Auxiliary Bridge Crane (2) - Supply & Install			Competitive Bid	Lump Sum	Contractor	Contractor	Contractor	Contractor	EPCM		2014	EPCM contractor to provide Specifications to Standardize cranes on site
	10 Ton Auxiliary Bridge Crane (1) Supply & Install			Competitive Bid	Lump Sum	Contractor	Contractor	Contractor	Contractor	EPCM		2014	EPCM contractor to provide Specifications to Standardize cranes on site
	Architectural Finishes Supply & Install			Competitive Bid	Lump Sum	Contractor	Contractor	Contractor	Contractor	EPCM		2014	Contractor to supply samples for approval
	Plumbing, Electrical, HVAC System - Supply & Install			Competitive Bid	Lump Sum	Contractor	Contractor	Contractor	Contractor	EPCM		2014	Contractor to purchase equipment to industry standards
	Lube Oil Storage Tanks and Piping System			Competitive Bid	Lump Sum	Contractor	Contractor	Contractor	Contractor	EPCM		2014	EPCM contractor to provide Specifications
	Warehouse Shelving Equipment Supply & Install			Competitive Bid	Lump Sum	Contractor	Contractor	Contractor	Contractor	EPCM		2014	Contractor to provide samples for approval
	Owner Supply												
	Tire Shop Equipment Supply & Install			Competitive Bid	Lump Sum	EPCM	EPCM	EPCM	EPCM	EPCM		2015	As above
	Welding Shop & Electrical Shop Equipment Supply & Install			Competitive Bid	Lump Sum	EPCM	EPCM	EPCM	EPCM	EPCM		2015	As above
	Office Equipment Supply & Install			Competitive Bid	Lump Sum	EPCM	EPCM	EPCM	EPCM	EPCM		2015	As above
	Lunchroom Furniture Supply & Install			Competitive Bid	Lump Sum	EPCM	EPCM	EPCM	EPCM	EPCM		2015	As above
31A	EMERGENCY SERVICES BUILDING - Located at Mine Site Scope Includes: Modularized facility, with Attached Equipment Storage Garage	TBA	EP	Competitive Bid	Lump Sum	Contractor	Contractor	Contractor	Contractor	EPCM		2014	EPCM contractor to provide General Arrangement drawings and Specifications. Contractor to design a modular building, fabricate and deliver to marshalling area,
F	MODULER BUILDINGS - MINE SITE												
32	ARCTIC CORRIDORS SUPPLY - (Confirm if required) Scope includes: Fabrication of Modularized Arctic Corridors	TBA	Purchase	Competitive Bid	Lump Sum	EPCM	Contractor	Contractor	General Contractor	EPCM		2015	EPCM contractors will provide detailed design and specifications. Contractor to fabricate units and deliver to the marshalling yard. Owner ship to site and locate in laydown areas. Erection will be by the General Contractor, who will be responsible for moving to final location.
33	PERMANENT EXPLOSIVES MANUFACTURING FACILITY	TBA	BOO	Competitive Bid	Lump Sum	Contractor	Contractor	Contractor	Contractor	EPCM		2015	EPCM contractor to provide explosive requirements for the site. Contractor to size facility, distribution equipment and storage requirements.
	Explosives Supplies			Competitive Bid	Lump Sum	Contractor	Contractor	Contractor	Contractor	EPCM			
	Storage Containers			Competitive Bid	Lump Sum	Contractor	Contractor	Contractor	Contractor	EPCM			

PKG ID	Description	Contractor	Contract	Contract Type	Method of Payment	Design By	Procurement By	Misc Materials Supply By	Installation or Service By	Installation or Service Managed By	PO/Contracts Award	Date Reg'd on Site	Action/Comments/Deliverables
G	CONSTRUCTION PACKAGES - PLANT SITE												
34	EARTHWORKS - "SITE CAPTURE" Scope Includes: Develop General Site Access Roads and Laydown areas Includes producing road materials Set-up Crushers and Develop Quarries. (2) Develop temporary & Permanent Infrastructure pads Drill, Blast, Excavate for Foundation, Rough Grade only Construct Storm Waste Ponds, Diversion Ditches, Waste Rock Drainage Channel and Catchment and Stock Pile Drainage Pond Construct Fuel Containment Berms and Liners Air Strip (To Be Confirmed) Stock Pile and transport Concrete Aggregate Stock Pile Engineered Aggregates for the Construction Program Construct Pipe Bed to the Fresh Water Intake Pipe Bed for the Tailings Lines Develop Landfill for Waste Materials	TBA	Build	Competitive Bid	T & M	EPCM	Contractor	Contractor	Contractor	EPCM		2013	Contractor to provide head office support, supervision, tradesmen, all heavy equipment including Screening and Crushing plant (s) dozers, excavators, service trucks, fuel trucks, loaders, graders, water trucks, pumps and compactors required to complete the scope of work. Includes providing spec aggregate materials for the access roads, containments and site requirements. Includes supply of drilling and blasting equipment for the development of the rock quarries and required site cuts. Owner to provide infrastructure, including offices, lunchrooms, maintenance facility and bussing if required. Contractor to provide small tools, lubricants and equipment to complete the scope. Owner to provide fuel
	Culverts			Competitive Bid	Lump Sum	EPCM	EPCM	Contractor	Contractor	EPCM		2013	Culverts will be Specified by the EPCM contractor
	Portable Crushers			Competitive Bid	Unit Rates	Contractor	Contractor	Contractor	Contractor	EPCM		2013	Contractor to size to meet the project requirements
	Liner Supply and Install			Competitive Bid	Unit Rates	EPCM	Contractor	Contractor	Contractor	EPCM		2013	EPCM contractor will provide specifications for liner supply and installation
34A	TAILINGS DISPOSAL & RECLAIM FACILITY Scope includes: Tailings North & South Starter Dams, Diversion & Seepage Collection Ponds, Tailings Basin, Site Dewatering, & Road Construction. Includes Logging & Stockpiling of Trees, Clearing/Grubbing, Excavations, Material Processing, Rip Rap Filter Bedding			Competitive Bid	T & M	EPCM	Contractor	Contractor	Contractor	EPCM		2014	Contractor to provide head office support, supervision, tradesmen, all heavy equipment including Screening and Crushing plant (s) dozers, excavators, service trucks, fuel trucks, loaders, graders, water trucks, pumps and compactors required to complete the scope of work. Includes providing spec aggregate materials for the access roads, containments and site requirements. Includes supply of drilling and blasting equipment for the development of the rock quarries and required site cuts. Owner to provide infrastructure, including offices, lunchrooms, maintenance facility and bussing if required. Contractor to provide small tools, lubricants and equipment to complete the scope. Owner to provide fuel
35	SITE WIDE FOUNDATIONS - PLANT SITE Scope Includes: Detailed Excavation/Form/Place/Finish Concrete & Supply & Install all Embedded Metals for the Following Structures: Admin Building, Assay & Met Lab, Warehouse & Maintenance Shop, Ambulance Building, 170 Person Permanent Camp Facility, Concentrate Loadout Building, Cold Storage Building, Sub-Station Foundations, Fuel Module Foundations, Complete Plant Site Grinding & Floation Area, Teigen Tunnel Conveyor Foundations, Portal Entrance Foundations, Stockpile Conveyor Foundations, Conveyor Bents & Tower Foundations Possible to Combine with #	TBA	Build	Competitive Bid	Lump Sum	EPCM	Contractor	Contractor	Contractor	EPCM		2013	Contractor to supply head office support, supervision, tradesmen, final grade excavation, equipment. Scope includes form and shoring design, detailed excavations, trenching, fabrication and installation of forms, backfill, compaction, heating and hoarding, installation of concrete and finishing. Contractor to provide miscellaneous materials. Contractor is responsible for off-loading, storage, and transportation of equipment to work site locations from laydown areas. Contractor to provide cranes & trucks to transport materials and equipment. Owner will provide graded lay down areas, a prepared construction site, construction water, construction power and camp facility. Camp facility will be billed directly to the contractor. Concrete plant will be erected on site and managed by the foundations contractor. Includes batching and delivery of concrete to their scope and if required to other contractors on site. Contractor to turnover foundations after all testing activities listed above are completed.
	Reinforcing, Anchor Bolts, Embedded Materials Supply & Install			Competitive Bid	Lump Sum	EPCM	Contractor	Contractor	Contractor	EPCM		2013 2014	Contractor is responsible for take-off, purchase, pre-fabrication of reinforcing, anchor bolts and embedded materials, shipping to marshalling yard and installation
	Prefabricated Forms, Shoring, Scaffolding Supply & Install			Competitive Bid	Lump Sum	EPCM	Contractor	Contractor	Contractor	EPCM		2013 2014	Contractor to pre-fab formwork on site due to shipping restraints
	Heating & Hoarding Equipment Supply & Install			Competitive Bid	Lump Sum	EPCM	Contractor	Contractor	Contractor	EPCM		2013 2014	Contractor to provide all equipment, service and fuel all equipment for heating and hoarding
35A	CONCRETE BATCH PLANT - SUPPLY Scope Includes: One 80 Cubic Meters/Hr Plant located at Plant Site												EPCM contractor will provide specifications for the batch plant. The contractor will provide final design, including building, equipment and delivery equipment. The contractor will erect the facility and commission.
	Complete Batch Operational Batch Plant		Purchase	Competitive Bid	Lump Sum	EPCM	EPCM	Contractor	Contractor	EPCM		2012	The Owner will purchase the complete facility (2) and deliver to each site for the Foundation contractor to erect and commission. The facilities will be operated and maintained by the Site Wide Foundations Contractor.

PKG ID	Description	Contractor	Contract	Contract Type	Method of Payment	Design By	Procurement By	Misc Materials Supply By	Installation or Service By	Installation or Service Managed By	PO/Contracts Award	Date Reg'd on Site	Action/Comments/Deliverables
	Mixer (Drum) Trucks, Pump Trucks, Water Truck, Fuel Truck, Loaders		Purchase	Competitive Bid	Lump Sum	EPCM	EPCM	Contractor	Contractor	EPCM		2012	Owner to purchase and deliver to site. Service contractor to maintain, operated by the Foundations Contractor. 4 mixer trucks required at each location total of (8) 1 pump truck in each location, 1 water truck, 1 fuel truck, 1 zoom boom and 2 loaders in each location.
	Cement Powder		Purchase	Competitive Bid	Lump Sum	EPCM	EPCM	Contractor	Contractor	EPCM		2013 2014	Owner to purchase and deliver to site as required to support the foundations program. Contractor is responsible for moving cement to the batch plant from the storage areas
	Concrete Additives		Purchase	Competitive Bid	Lump Sum	EPCM	EPCM	Contractor	Contractor	EPCM		2013 2014	Owner to purchase and deliver to site. Contractor is responsible for storing and managing the supply to the batch plant.
	Aggregate Supply		N/A	N/A	N/A	N/A	N/A	N/A	Contractor	EPCM		2013 2014	Supplied to the batch plant stock pile by the earthworks contractor
	Aggregate Storage Facility & Steam unit.		Purchase	Competitive Bid	Lump Sum	Contractor	Contractor	Contractor	Contractor	EPCM		2013 2014	Storage building is supplied by the Owner. Steam Unit is supplied by the contractor and erected by the batch plant operator. Steam Unit and piping install by the batch plant operator
36	GENERAL CONTRACT - SECONDARY CRUSHING, SCREENING, FLOTATION, LEACHING, REFINERY, CONCENTRATE HANDLING, CYANIDE RECOVERY & DESTRUCTION, MOLYBDENUM CIRCUIT, INTERCONNECTING ARCTIC CORRIDORS, TIEGEN TUNNEL CONVEYORS, PIPING, ELECTRICAL, TAILINGS PIPELINES & BARGES - VERTICAL PACKAGE - ANCHOR BOLT UP Scope Includes: Structural Steel, Cladding, Mechanical, Piping, Electrical, Instrumentation, check-out to mechanical completion and pre-commissioning support. Possible to combine with Mitchell Site General Contract	TBA	Build	Competitive Bid	Lump Sum Unit Rate	EPCM	EPCM	Contractor	Contractor	EPCM		2014	Foundations and anchor bolts installed by the Foundations Contractor. Crusher Erection Contractor to supply head office support, supervision, tradesmen and equipment. Scope includes, steel erection, erection of owner supplied equipment, installation of electrical and instrumentation cable distribution, E House installations, secondary steel, stairs, handrail, grating, interior finishes, control rooms, MCC rooms, piping, pipe supports, valves, specialty hangers. Contractor to provide miscellaneous materials. Contractor is responsible for off-loading, storage, heated if required, preservation and transportation of equipment to final location from the laydown areas. Heavy lift cranes, operators and rigging supplied by the site services contractor. Owner will provide graded lay down areas, a prepared construction site, construction water, construction power and camp facility. Camp facility will be billed directly to the contractor. Contractor to turnover the facility when mechanically complete.
	Processing Plant												
	Building (s) Structural Steel, Stair towers, Handrail & Grating & Cladding		Purchase	Competitive Bid	Lump Sum	EPCM	EPCM	Contractor	Contractor	EPCM		2014	EPCM Contractor to supply and deliver to site for off-loading by the General Contractor
	Interior Support Steel		Purchase	Competitive Bid	Lump Sum	EPCM	EPCM	Contractor	Contractor	EPCM			
	Arctic Corridors		Purchase	Competitive Bid	Lump Sum	EPCM	EPCM	Contractor	Contractor	EPCM			Modularize Arctic Corridores supplied by other, erected by the General Contractor
	SAG Grinding Mill (1)		Purchase	Competitive Bid	Lump Sum	EPCM	EPCM	Contractor	Contractor	EPCM			
	Primary Grinding (Ball Mill) (1)		Purchase	Competitive Bid	Lump Sum	EPCM	EPCM	Contractor	Contractor	EPCM			As above
	Apron Feeders		Purchase	Competitive Bid	Lump Sum	EPCM	EPCM	Contractor	Contractor	EPCM			As above
	Discharge Conveyors		Purchase	Competitive Bid	Lump Sum	EPCM	EPCM	Contractor	Contractor	EPCM			
	Dust Collector Systems (4)		Purchase	Competitive Bid	Lump Sum	EPCM	EPCM	Contractor	Contractor	EPCM			
	Chutes & Hoppers		Purchase	Competitive Bid	Lump Sum	EPCM	EPCM	Contractor	Contractor	EPCM			As above
	Discharge, Feeder & Stockpile Feed Conveyor		Purchase	Competitive Bid	Lump Sum	EPCM	EPCM	Contractor	Contractor	EPCM			EPCM contractor to provide conveyor modules, shipped to site complete minus belting
	Belt scales, Magnets & Samplers		Purchase	Competitive Bid	Lump Sum	EPCM	EPCM	Contractor	Contractor	EPCM			EPCM Contractor to supply and deliver to site for off-loading by the General Contractor
	Hydraulic Power Packs		Purchase	Competitive Bid	Lump Sum	EPCM	EPCM	Contractor	Contractor	EPCM			
	Blowers, Dryers, Compressor Systems		Purchase	Competitive Bid	Lump Sum	EPCM	EPCM	Contractor	Contractor	EPCM			As above
	Conveyor Belting		Purchase	Competitive Bid	Lump Sum	EPCM	EPCM	Contractor	Contractor	EPCM			As above
	Conveyor drives, Motors & Guards		Purchase	Competitive Bid	Lump Sum	EPCM	EPCM	Contractor	Contractor	EPCM			As above
	Diverter Gate Chutes		Purchase	Competitive Bid	Lump Sum	EPCM	EPCM	Contractor	Contractor	EPCM			
	Sampler Chute Analyzers		Purchase	Competitive Bid	Lump Sum	EPCM	EPCM	Contractor	Contractor	EPCM			As above
	Rotary Valves		Purchase	Competitive Bid	Lump Sum	EPCM	EPCM	Contractor	Contractor	EPCM			As above
	Pumps		Purchase	Competitive Bid	Lump Sum	EPCM	EPCM	Contractor	Contractor	EPCM			As above
	Pre-fabricated Tanks and Vessels		Purchase	Competitive Bid	Lump Sum	EPCM	EPCM	Contractor	Contractor	EPCM			
	Heat Exchangers		Purchase	Competitive Bid	Lump Sum	EPCM	EPCM	Contractor	Contractor	EPCM			
	Overhead Cranes / Hoists / Monorails		Purchase	Competitive Bid	Lump Sum	EPCM	EPCM	Contractor	Contractor	EPCM			As above
	Piping, Manual Valves, Fittings, Hangers & Support Steel		Purchase	Competitive Bid	Lump Sum	EPCM	Contractor	Contractor	Contractor	EPCM			Contractor to supply and deliver to marshalling yard for shipping to site
	Control Valves		Purchase	Competitive Bid	Lump Sum	EPCM	EPCM	Contractor	Contractor	EPCM			As above
	Electrical Tray, Fittings & Support Steel		Purchase	Competitive Bid	Lump Sum	EPCM	Contractor	Contractor	Contractor	EPCM			Contractor to supply and deliver to marshalling yard for shipping to site
	Interior & Exterior Lighting & Poles		Purchase	Competitive Bid	Lump Sum	EPCM	Contractor	Contractor	Contractor	EPCM			Contractor to supply and deliver to marshalling yard for shipping to site
	Grounding		Purchase	Competitive Bid	Lump Sum	EPCM	Contractor	Contractor	Contractor	EPCM			Contractor to supply and deliver to marshalling yard for shipping to site
	Electrical Equipment - MCC's, Switch Gear		Purchase	Competitive Bid	Lump Sum	EPCM	EPCM	Contractor	Contractor	EPCM			As above
	Electrical Cabinets		Purchase	Competitive Bid	Lump Sum	EPCM	EPCM	Contractor	Contractor	EPCM			As above
	Instruments		Purchase	Competitive Bid	Lump Sum	EPCM	EPCM	Contractor	Contractor	EPCM			As above
	Control System Equipment		Purchase	Competitive Bid	Lump Sum	EPCM	EPCM	Contractor	Contractor	EPCM			Program, program set-up, installation and commissioning by EPCM contractor

PKG ID	Description	Contractor	Contract	Contract Type	Method of Payment	Design By	Procurement By	Misc Materials Supply By	Installation or Service By	Installation or Service Managed By	PO/Contracts Award	Date Reg'd on Site	Action/Comments/Deliverables
	Fire Detection Systems		Purchase	Competitive Bid	Lump Sum	EPCM	Contractor	Contractor	Contractor	EPCM			EPCM to design, Contractor to supply & install. Does not include permanent buildings erected by others
	Bulk Electrical Cable		Purchase	Competitive Bid	Lump Sum	EPCM	EPCM	Contractor	Contractor	EPCM			Contractor to supply and deliver to marshalling yard for shipping to site
	Interior Finishing Materials		Purchase	Competitive Bid	Lump Sum	EPCM	Contractor	Contractor	Contractor	EPCM			Contractor to supply and deliver to marshalling yard for shipping to site
	Electrical Cabinets		Purchase	Competitive Bid	Lump Sum	EPCM	Contractor	Contractor	Contractor	EPCM			As above
	Instruments		Purchase	Competitive Bid	Lump Sum	EPCM	EPCM	Contractor	Contractor	EPCM			As above
	"E" House's		Purchase	Competitive Bid	Lump Sum	EPCM	EPCM	Contractor	Contractor	EPCM			EPCM contractor to provide general arrangement drawings & specifications. Major equipment will be supplied by the Owner. E House will be assembled off site and shipped to site commissioned and ready for cable tie-ins by the contractors. E House will be installed by the General Contractor
	Control System Equipment (Confirm System)		Purchase	Competitive Bid	Lump Sum	EPCM	EPCM	Contractor	Contractor	EPCM			Program, program set-up, installation and commissioning by EPCM contractor
	Bulk Electrical Cable		Purchase	Competitive Bid	Lump Sum	EPCM	EPCM	Contractor	Contractor	EPCM			Contractor to supply and deliver to marshalling yard for shipping to site
	Interior Finishing Materials		Purchase	Competitive Bid	Lump Sum	EPCM	Contractor	Contractor	Contractor	EPCM			Contractor to supply and deliver to marshalling yard for shipping to site
	Fire Detection Systems		Purchase	Competitive Bid	Lump Sum	EPCM	Contractor	Contractor	Contractor	EPCM			EPCM to design, Contractor to supply & install. Does not include permanent buildings erected by others
	Tiegen Tunnel Conveyors, Mechanical & Piping												
	Tiegen Tunnel 72" Conveyors Installation (Approximately 2000 Sections)		Purchase	Competitive Bid	Lump Sum	EPCM	EPCM	Contractor	Contractor	EPCM		2014 2015 2016 2017	Conveyors will be shipped to site partially assembled. Contractor to complete and erect.
	12" Fire Water Line - Suspended - Conveyor Tunnel		Purchase	Competitive Bid	Lump Sum	EPCM	EPCM	Contractor	Contractor	EPCM		2015 16	EPCM Contractor to purchase & deliver to Contractors laydown area
	4" Fuel Line - Buried - Conveyor Tunnel		Purchase	Competitive Bid	Lump Sum	EPCM	EPCM	Contractor	Contractor	EPCM		2016 16	As above
	14" Clean Drainage Line - Transportation Tunnel		Purchase	Competitive Bid	Lump Sum	EPCM	EPCM	Contractor	Contractor	EPCM		2017 16	As above
	14" ARD (Acid Rock Drainage Line) - Transportation Tunnel		Purchase	Competitive Bid	Lump Sum	EPCM	EPCM	Contractor	Contractor	EPCM		2018 16	As above
	Grating Drainage Covers - Conveyor Tunnel		Purchase	Competitive Bid	Lump Sum	EPCM	EPCM	Contractor	Contractor	EPCM		2019 16	As above
	Tailing Pipelines												
	Primary & Secondary Cyclones		Purchase	Competitive Bid	Lump Sum	EPCM	EPCM	Contractor	Contractor	EPCM		2015	EPCM Contractor to purchase & deliver to Contractors laydown area
	Tailings Energy Recovery Buildings (2) Pumps		Purchase	Competitive Bid	Lump Sum	EPCM	EPCM	Contractor	Contractor	EPCM		2015	As above
	Water Release Pumps No. 1 & No. 2		Purchase	Competitive Bid	Lump Sum	EPCM	EPCM	Contractor	Contractor	EPCM		2015	As above
	24" Steel Reclaim Water Line		Purchase	Competitive Bid	Lump Sum	EPCM	EPCM	Contractor	Contractor	EPCM		2015	As above
	North & South 42" Rougher Slurry HDPE Pipelines (6 km Long)		Purchase	Competitive Bid	Lump Sum	EPCM	EPCM	Contractor	Contractor	EPCM		2015	As above
	Collection (2)& Drop Tanks (3)		Purchase	Competitive Bid	Lump Sum	EPCM	EPCM	Contractor	Contractor	EPCM		2015	As above
	Pressure Reducing Stations (All Lines)		Purchase	Competitive Bid	Lump Sum	EPCM	EPCM	Contractor	Contractor	EPCM		2016	As above
	Reclaim Barge		Purchase	Competitive Bid	Lump Sum	EPCM	EPCM	Contractor	Contractor	EPCM		2015	As above
	Dilution Water Barge		Purchase	Competitive Bid	Lump Sum	EPCM	EPCM	Contractor	Contractor	EPCM		2015	As above
	Interconnection Piping, Valves & Fittings		Purchase	Competitive Bid	Lump Sum	EPCM	EPCM	Contractor	Contractor	EPCM		2016	As above
36A	FIRE PROTECTION INSTALLATION - Material Handling Scope includes: Crushing, Conveying and StockYard Permanent Building not included		Build	Competitive Bid	Lump Sum	Contractor	Contractor	Contractor	Contractor	EPCM			Contractor to supply head office support, supervision, tradesmen, minor equipment, heavy equipment by the site services contractor. Detailed design to be approved by the Local Regulatory Agency. Scope includes installation of fire protection piping systems from the battery limits in each area, also includes pipe supports, specialty hangers. Contractor to provide miscellaneous materials. Materials will be moved from the laydown areas to the site by the contractor. Contractor to turnover the fire protection systems after hydro-testing and when mechanically complete.
	Pipe, Fittings, Valves, Instrumentation		Purchase	Competitive Bid	Lump Sum	Contractor	Contractor	Contractor	Contractor	EPCM		2022	Contractor supplies all materials.
36B	SITE WIDE PIPING SERVICES INSTALLATIONS Scope Includes: Fire Protection Piping Fuel Supply System Including Tank Farm Piping Setting and completing Dispensing Modules Effluent Discharge piping Fresh Water Intake Piping & Distribution Glycol Heating Distribution Piping HDPE Piping To and From Ponds.		Build	Competitive Bid	Lump Sum	EPCM	EPCM	Contractor	Contractor	EPCM			Contractor to supply head office support, supervision, tradesmen and minor equipment. Scope includes trenching, backfill, compaction, installation of piping systems to battery limits, pipe supports, specialty hangers and specialty welding including HDPE butt fusing. Contractor to provide miscellaneous materials. Owner will provide graded lay down areas, a prepared construction site, construction water, construction power and camp facility. Equipment required for the installation will be supplied by the site services contractor. Butt Fusing machines will be provided by the installation contractor. Camp facility will be billed directly to the contractor. Infrastructure will be provided by the Owner. Concrete will be installed by the foundations contractor. Contractor to turnover the piping systems after hydro-testing and when mechanically complete.

PKG ID	Description	Contractor	Contract	Contract Type	Method of Payment	Design By	Procurement By	Misc Materials Supply By	Installation or Service By	Installation or Service Managed By	PO/Contracts Award	Date Reg'd on Site	Action/Comments/Deliverables
	Fire, Fuel, Water & Sewage Pipe & Fittings Supply & Install		Purchase	Competitive Bid	Lump Sum	EPCM	Contractor	Contractor	Contractor	EPCM			EPCM contractor to provide pipe specifications and installation procedures
	Sewage Tanks		Purchase	Competitive Bid	Lump Sum	EPCM	Contractor	Contractor	Contractor	EPCM			
	Control Valves		Purchase	Competitive Bid	Lump Sum	EPCM	Contractor	Contractor	Contractor	EPCM			EPCM contractor to provide control valve specifications and installation procedures
	Instrumentation		Purchase	Competitive Bid	Lump Sum	EPCM	Contractor	Contractor	Contractor	EPCM			
	HDPE Pipe & Fittings		Purchase	Competitive Bid	Lump Sum	EPCM	EPCM	Contractor	Contractor	EPCM			Contractor responsible for off-loading and storage of Owner supplied HDPE pipe/fittings
	Fuel Dispensing Modules		Purchase	Competitive Bid	Lump Sum	EPCM	EPCM	Contractor	Contractor	EPCM		2015	Designed and supplied by the Owner and shipped to the laydown areas.
36C	PLANT SITE POWER DISTRIBUTION - Includes Teigen Tunnel Installation Scope Includes: Installation of Sub-Stations / E House - Modularized Out Side Site Wide Power Distribution - Overhead & Surface Cabling		Build	Competitive Bid	Lump Sum	EPCM	EPCM	Contractor	Contractor	EPCM			Contractor to supply head office support, supervision, tradesmen, minor equipment to complete the scope of work. Foundation prep and installation by others. Contractor to turnover the facility when mechanically complete.
	Sub Station/E House Supply		Purchase	Competitive Bid	Lump Sum	EPCM	EPCM	Contractor	Contractor	EPCM		2015	Substations/E Houses will be supplied to site as a module, complete with equipment and internal wiring installed and commissioned, ready for final terminations by the contractor
	High Voltage Cable		Purchase	Competitive Bid	Lump Sum	EPCM	EPCM	Contractor	Contractor	EPCM			Owner to supply and deliver to laydown areas
	High Voltage Fittings & Connectors		Purchase	Competitive Bid	Lump Sum	EPCM	EPCM	Contractor	Contractor	EPCM		2015	Owner to supply and deliver to laydown areas
	Power Poles		Purchase	Competitive Bid	Lump Sum	EPCM	EPCM	Contractor	Contractor	EPCM		2015	Owner to supply and deliver to laydown areas. If drilling is required it will be supplied by the piling contractor
37	26 kV POWER DISTRIBUTION FROM HIGHWAY 37 Scope Includes: Installation of Power Lines, Poles, Electrical Equipment. Includes Developing the right of way & Final Site Grading & Final Connections to the Plant Site Substation	TBA	Build	Competitive Bid	Lump Sum	EPCM	EPCM	Contractor	Contractor	EPCM		2013 14	EPCM Contractor to supply detailed design, Contractor to supply head office support, supervision, tradesmen, construction equipment to complete the scope of work. Contractor to turnover the system when mechanically complete.
	Electrical Equipment		Purchase	Competitive Bid	Lump Sum	EPCM	Contractor	Contractor	Contractor	EPCM		2014 14	
	Power Poles		Purchase	Competitive Bid	Lump Sum	EPCM	Contractor	Contractor	Contractor	EPCM		2015 14	
	High Voltage Cable		Purchase	Competitive Bid	Lump Sum	EPCM	Contractor	Contractor	Contractor	EPCM		2016 14	
38	BULK DIESEL FUEL STORAGE FACILITIES - Mine Site & Plant Site Scope Includes: Supply & Install Fuel Tanks Test and Commission Tanks	TBA	EPC	Competitive Bid	Lump Sum	Contractor	Contractor	Contractor	Contractor	EPCM			EPCM Contractor to supply general arrangements, specifications and volumes for fuel calculation in sizing the facility. Owner will provide berms and liner ready for tank installation. Contractor to supply supervision, labour, materials & minor equipment, vehicles and consumables to complete the scope & provide an operational facility. All lifting equipment for material and men provided by the site services contractor. No hydro test required, 100% NDT testing is required. Contractor to turnover the Facility when Mechanically complete
	Field Erected Tanks Supply & Install												Supplied by the contractor. Owner will ship to site and locate close to tank erection areas
	Earthworks/Berms/Liners & Final Grading After Installation		Purchase	Competitive Bid	Lump Sum	EPCM	Earthworks Contractor	Contractor	Earthworks Contractor	EPCM			
	Interconnecting Piping/Valves/Day Tanks		Purchase	Competitive Bid	Lump Sum	EPCM	Contractor	Contractor	General Contractor	EPCM		2014	EPCM contractor to provide design, contractor to fabricate and deliver to marshalling yard and install on site
	Mitchell Pit - Fuel Station #1 Dispensing (Module)		Purchase	Competitive Bid	Lump Sum	EPCM	EPCM	Contractor	Contractor	EPCM			Off-loading & Dispensing Modules Complete with Meter System
	Mitchell Pit - Fuel Station Storage Tank #1		Purchase	Competitive Bid	Lump Sum	EPCM	Contractor	Contractor	Contractor	EPCM		2013	
	Mitchell Pit - Fuel Station #2 Dispensing (Module)		Purchase	Competitive Bid	Lump Sum	EPCM	EPCM	Contractor	Contractor	EPCM			EPCM contractor to design, fabricate modules and ship to site for erection by the Piping contractor
	Mitchell Pit - Fuel Station Storage Tank #2		Purchase	Competitive Bid	Lump Sum	EPCM	Contractor	Contractor	Contractor	EPCM			
	Mitchell Pit - Fuel Station Storage Tank #3 Pre-Construction (Module)		Purchase	Competitive Bid	Lump Sum	EPCM	Contractor	Contractor	Contractor	EPCM			
	Saddle Staging Area - Fuel Station #4 (Module)		Purchase	Competitive Bid	Lump Sum	EPCM	EPCM	Contractor	Contractor	EPCM			
	Plant Site - Fuel Station & Storage #5		Purchase	Competitive Bid	Lump Sum	EPCM	EPCM	Contractor	Contractor	EPCM			
	Plant Site - Fuel Station & Storage #6 Pre-Construction (Module)		Purchase	Competitive Bid	Lump Sum	EPCM	Contractor	Contractor	Contractor	EPCM			
	Temporary Fuel Storage Facilities (Modules) Various Locations		Purchase	Competitive Bid	Lump Sum	EPCM	EPCM	Contractor	Contractor	EPCM			
												2013	
												2014	
												2014	

PKG ID	Description	Contractor	Contract	Contract Type	Method of Payment	Design By	Procurement By	Misc Materials Supply By	Installation or Service By	Installation or Service Managed By	PO/Contracts Award	Date Reg'd on Site	Action/Comments/Deliverables
G	PERMANENT BUILDINGS - PLANT SITE											2014	
39	PERMANENT ACCOMMODATION COMPLEX & SITE FACILITIES Scope Includes: Complete Operational Facility at Mine Site 1 - 250 Person Facility - Single Rooms Complete with Washrooms. Includes Kitchen, Dining Room, Food Storage & Preparation Areas, Recreation Facilities & Equipment, Laundry Service, Sewage Treatment Plant & Water Treatment Plant	TBA	EPC	Competitive Bid	Lump Sum	Contractor	Contractor	Contractor	Contractor	EPCM		2014	EPCM to provide general arrangement drawings. Contractor to provide detailed design, supply, transport, erect & commission a 350 person permanent camp facility. Scope Includes supply of supervision, tradesmen, equipment and infrastructure to support the scope of work. Permanent power will be supplied by the Owner later in the project. Fuel for construction managed by the contractor. Final internal walkways, roads, fencing and landscaping is by the contractor. Owner will provide a level & compacted site to suit the footprint of the camp. Security System and Security Service will be provided by the Owner. Internal wiring by the contractor. Interior furnishings supplied by the Contractor. Contractor to turnover a fully operational facility upon completion.
	Single Storey with Center Core Facility Includes : Walkways, Mudroom Entrances & Stairwells Propane storage area			Competitive Bid	Lump Sum	Contractor	Contractor	Contractor	Contractor	EPCM			Contractor to provide a mock-up of the single room accommodations for review by the Owner and EPCM contractor.
	Potable Water Treatment Plant and Potable Water Tank			Competitive Bid	Lump Sum	Contractor	Contractor	Contractor	Contractor	EPCM		2013 2014	Contractor to provide detailed layout and type of equipment for approval by the EPCM Contractor.
	Incinerator Supply & Install Sewage Treatment Plant Supply & Install			Competitive Bid Competitive Bid	Lump Sum Lump Sum	Contractor Contractor	Contractor Contractor	Contractor Contractor	Contractor Contractor	EPCM EPCM		2013 2014	As above As above
	Kitchen Equipment, Coolers & Appliances Supply & Install Recreation, Dining Rm & Dorm Furnishings Supply & Install			Competitive Bid Competitive Bid	Lump Sum Lump Sum	Contractor Contractor	Contractor Contractor	Contractor Contractor	Contractor Contractor	EPCM EPCM			Contractor to establish requirements and recommend equipment for approval Contractor to establish requirements and recommend equipment for approval
40	COLD STORAGE BUILDING - UNHEATED	TBA	EPC	Competitive Bid	Lump Sum	EPCM	Contractor	Contractor	Truck shop Contractor	EPCM		2015	Contractor to supply head office support, supervision, tradesmen, equipment, transportation and support infrastructure to complete the scope of work. Scope includes steel erection, cladding, exit and roll up doors, electrical and final grading. Contractor to provide miscellaneous materials. Contractor is responsible for off-loading, storage, heated if required, preservation and transportation of equipment to final location. Owner will provide graded lay down areas, foundation to anchor bolts and a prepared construction site, construction water, construction power and camp facility. Camp facility will be billed directly to the contractor. Contractor to turnover the facility when mechanically complete.
	Building Steel, Cladding, Stairways & Exit Doors			Competitive Bid	Lump Sum	Contractor	Contractor	Contractor	Contractor	EPCM			EPCM contractor to provide General Arrangement drawings and Specifications. Contractor to purchase, deliver to marshalling area and erect.
	Roll-Up Doors (2)			Competitive Bid	Lump Sum	Contractor	Contractor	Contractor	Contractor	EPCM			Contractor to establish requirements and recommend equipment for approval
40A	ADMINISTRATION BUILDING - Located at Plant Site Scope Includes: Modularized facility	TBA	EPC	Competitive Bid	Lump Sum	Contractor	Contractor	Contractor	Contractor	EPCM		2015	EPCM contractor to provide General Arrangement drawings and Specifications. Contractor to design a modular building, fabricate and deliver to marshalling area or directly to site location. Contractor to turnover an fully operational facility
40B	ASSAY LABORATORY & MET LAB BUILDING - Located at Plant Site Scope Includes: Modularized facility	TBA	EPC	Competitive Bid	Lump Sum	Contractor	Contractor	Contractor	Contractor	EPCM		2015	EPCM contractor to provide General Arrangement drawings and Specifications. Contractor to design a modular building, fabricate and deliver to marshalling area or directly to site location. Contractor to turnover a fully operational facility
40C	WAREHOUSE & MAINTENANCE BUILDING - Located at Plant Site Scope Includes: Modularized facility	TBA	EPC	Competitive Bid	Lump Sum	Contractor	Contractor	Contractor	Contractor	EPCM		2015	EPCM contractor to provide General Arrangement drawings and Specifications. Contractor to design a modular building, fabricate and deliver to marshalling area or directly to site location. Contractor to turnover a fully operational facility
40D	AMBULANCE BUILDING - Located at Mine Site Scope Includes: Modularized facility, with Attached Equipment Storage Garage	TBA	EPC	Competitive Bid	Lump Sum	Contractor	Contractor	Contractor	Contractor	EPCM		2015	EPCM contractor to provide General Arrangement drawings and Specifications. Contractor to design a modular building, fabricate and deliver to marshalling area or directly to site location. Contractor to turnover a fully operational facility
	Ambulance			Competitive Bid	Lump Sum	Contractor	Contractor	Contractor	Contractor	EPCM			

PKG ID	Description	Contractor	Contract	Contract Type	Method of Payment	Design By	Procurement By	Misc Materials Supply By	Installation or Service By	Installation or Service Managed By	PO/Contracts Award	Date Reg'd on Site	Action/Comments/Deliverables
MINE SITE - OWNER'S RESPONSIBILITIES													
	MINE DEVELOPMENT (Owner's) Scope Includes: Mine Pre-Stripping, Waste Dump Development, Leachate Collection & Pit Dewatering, Major Haul Road Construction	Mine Operations	N/A	N/A	N/A	Mine Operations	Mine Operations	Mine Operations	Mine Operations	Mine Operations		2015	Mine operations are responsible for mine overburden removal, drilling and blasting of quarry material, waste dump development, pit dewater pumps and piping. Work includes construction of any haul roads within the pit limits, to the waste dump and within the waste dump area. Mine operations will also haul any pit-run material and fill material to the site bulk crushing and screening plant.
	MINE FLEET MANAGEMENT SYSTEM - (Confirm with Operations) Scope includes: Supply and Installation of Wireless System for Managing the Fleet during pit development and operation		Build	Competitive Bid	Lump Sum	EPCM	EPCM	Contractor	Contractor	Mine Operations		2015	Owner will provide general requirements and specification for the system. The contractor will provide the final design. Contract to supply head office support, supervision, tradesmen, equipment, transportation and support infrastructure to complete the scope of work. Owner will provide site infrastructure.
	System Equipment Supply		Purchase	Competitive Bid	Lump Sum	Contractor	Contractor	Contractor	Contractor	Mine Operations		2015	Contractor to specify, purchase and deliver to site
	Owner Supplied Equipment												EPCM contractor will manage the logistics to the marshalling yards, shipping to site, off loading and transporting to the final location on site.
	Mitchell Minesite - Plant Mobile Equipment Fleet		Purchase	Competitive Bid	Lump Sum	Owner	Owner	Owner	Owner	Owner		2015	Owner to develop detail list of equipment including drilling equipment
	Teigen Plantsite - Plant Mobile Equipment Fleet		Purchase	Competitive Bid	Lump Sum	Owner	Owner	Owner	Owner	Owner			Large equipment shipped in sections & assembled on site
	MINE OPERATIONS PIT FACILITY Scope includes: Fabrication & Installation		Purchase	Competitive Bid	Lump Sum	EPCM	EPCM	Contractor	Contractor	EPCM		2015	Owner to provide Specifications and general arrangement drawings. Contractor to fabricate and deliver to site